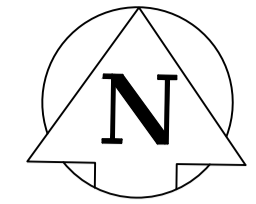
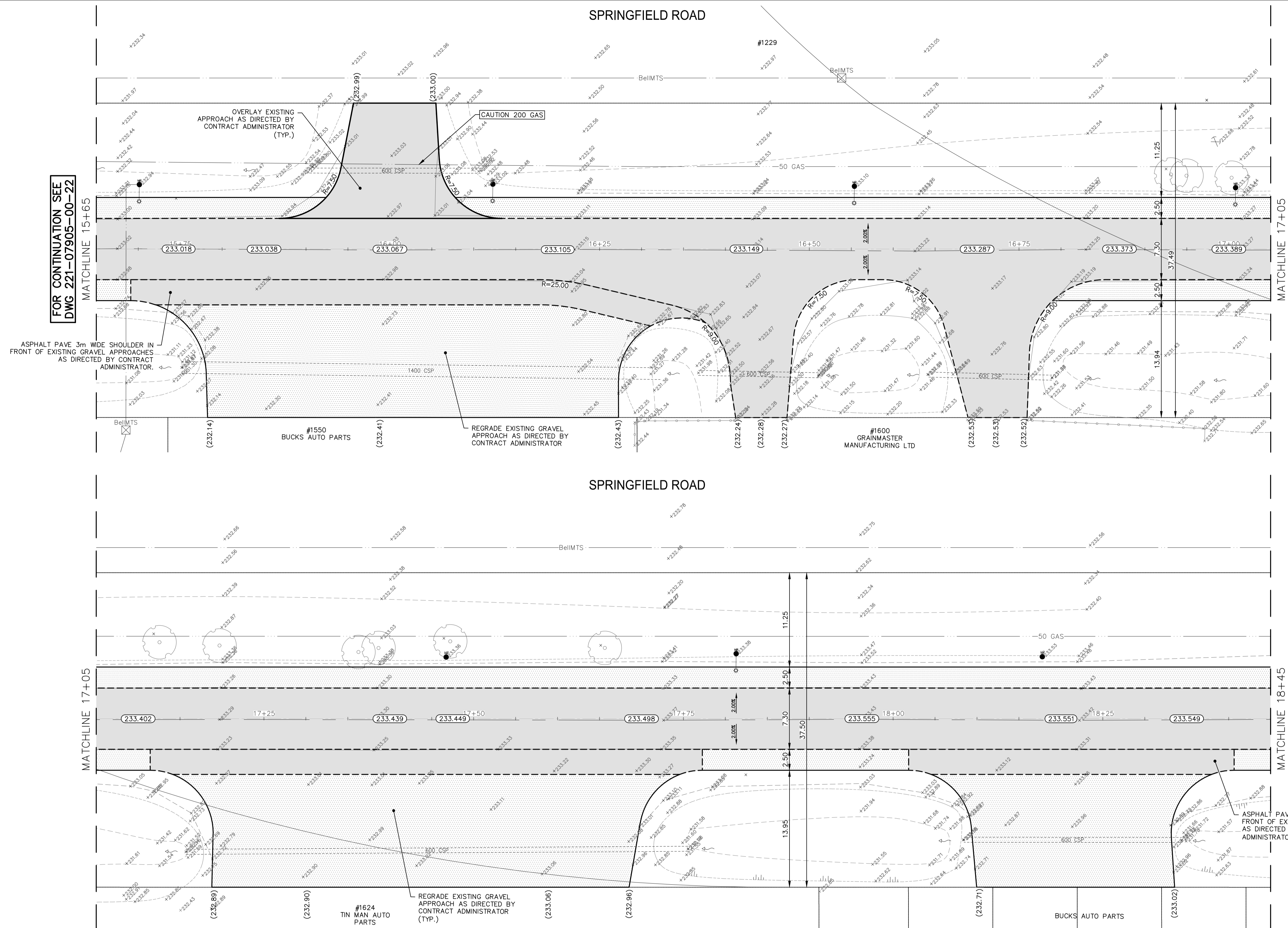


Apr 11, 2023 - 1:05pm P:\2022\221-07905-00 - Prof Services\14.11.06_Dwg_03_Work_Dwg\221-07905-00_Springfield_Rd_Plan&Profile.dwg - (tab:221-07905-00-23-R0



FOR CONTINUATION SEE DWG 221-07905-00-22

MATCHLINE 17+05

FOR CONTINUATION SEE DWG 221-07905-00-24

MATCHLINE 18+45

SPRINGFIELD ROAD

NOTES:

1. ALL WORK AND MATERIALS TO BE IN ACCORDANCE WITH THE LATEST REVISION OF THE CITY OF WINNIPEG STANDARD CONSTRUCTION SPECIFICATIONS.
2. CONTRACTOR TO CONFIRM THE LOCATION OF ALL UTILITIES/SERVICES IN THE FIELD PRIOR TO CONSTRUCTION.
3. ALL ROADWAY DIMENSIONS SHOWN ARE TO BACK OF CURB.
4. CONTRACTORS TO TAKE PRECAUTIONARY STEPS TO PROTECT EXISTING TREES WITHIN THE LIMITS OF CONSTRUCTION FROM DAMAGE FROM CONSTRUCTION ACTIVITIES AS OUTLINED IN THE SPECIFICATIONS.
5. LAMP STANDARDS, HYDRO POLES, AND ANCHORS THAT REQUIRE TEMPORARY SUPPORT, REMOVAL OR REPLACEMENT, TO BE DONE SO AT THE EXPENSE OF THE CONTRACTOR AS NECESSARY.
6. ADJUST ALL WATER VALVES, HYDRANTS, MANHOLES, AND CATCH BASINS IN WORK AREA TO GRADE.
7. ASPHALT PULVERIZATION TO BE DONE ON THE MAINLINE ROADWAY ONLY.
8. REMOVAL OF EXISTING ASPHALT FOR TIE-INS TO BE DONE AS REQUIRED AND DIRECTED BY CONTRACT ADMINISTRATOR.
9. RECONSTRUCTION OF SECTIONS OF THE ROADWAY TO BE DONE AS REQUIRED AND DIRECTED BY CONTRACT ADMINISTRATOR. CONSTRUCT 100mm OF GRANULAR A BASE, 400mm-50mm GRANULAR A SUB-BASE, CLASS A GEOGRID, AND SEPARATION/FILTRATION GEOTEXTILE FABRIC.
10. REGRADE DITCH AS DIRECTED BY CONTRACT ADMINISTRATOR.

LOCATIONS APPROVED UNDERGROUND STRUCTURES

SIGNED BY:	DATE:	G.A.M. ELEV.
SUPV UG STRUCTURES		
		7
		6
		5
		4
		3
		2
		1
NO.	ISSUED FOR TENDER	20230411
	DATE	K.G.
	DATE	BY

LOCATION OF UNDERGROUND STRUCTURES AS SHOWN ARE BASED ON THE BEST INFORMATION AVAILABLE BUT NO GUARANTEE IS GIVEN THAT ALL EXISTING UTILITIES ARE SHOWN OR THAT THE GIVEN LOCATIONS ARE EXACT CONFIRMATION OF EXISTENCE AND EXACT LOCATION OF ALL SERVICES MUST BE OBTAINED FROM THE INDIVIDUAL UTILITIES BEFORE PROCEEDING

wsp

DESIGNED BY: KG
DRAWN BY: KC

WSP Canada Inc.
1600 Buffalo Place
Winnipeg, MB R3T 6B8
t. 204.477.6650
f. 204.474.2864
www.wsp.com

CHECKED BY: SS
APPROVED BY: VM

HOR. SCALE: 1:250
VERTICAL: N/A

RELEASED FOR CONSTRUCTION

DATE: SEPTEMBER 2022

ENGINEERS SEAL

2023-04-11

CONSULTANT ACAD DWG. NO. 221-07905-00-23

FOR TENDER PURPOSES ONLY
NOT FOR CONSTRUCTION

METRIC
WHOLE NUMBERS INDICATE MILLIMETRES
DECIMALIZED NUMBERS INDICATE METRES

ENGINEERS GEOSCIENTISTS MANITOBA
Certificate of Authorization
WSP Canada Inc.
No. 5750

THE CITY OF WINNIPEG
PUBLIC WORKS DEPARTMENT
ENGINEERING SERVICES DIVISION

2023 INDUSTRIAL STREET RENEWALS

SPRINGFIELD ROAD

AC REHABILITATION
STA. 15+65 TO STA. 18+45

CITY DRAWING NUMBER: SHEET 07 OF 10
TENDER NO. 182-2023

EXISTING	LEGEND-PLAN	PROPOSED	EXISTING	LEGEND-PLAN	PROPOSED	EXISTING	LEGEND-PROFILE	PROPOSED
	WATER MAIN			IRON BAR			HYDRO POLE & LIGHT STANDARD	
	LAND DRAINAGE SEWER			LIGHT STANDARD OR TRAFFIC SIGNAL			HYDRO POLE	
	WASTE WATER SEWER			CURB RAMP			DETECTABLE WARNING SURFACE TILE	
	HYDRO			EDGE OF SIDEWALK			FENCE	
	BellMTS/SHAW/TELU			PROPERTY LINE			EDGE OF ASPHALT	
	GAS			EDGE OF CONCRETE			MODIFIED BARRIER CURB	
	SIGNALS			BARRIER CURB			BARRIER CURB AND GUTTER	
	MANHOLE			CONC SIDEWALK			NORTH OR WEST SIDEWALK	
	CATCH BASIN			CONCRETE SLAB			SOUTH OR EAST SIDEWALK	
	CURB INLET			ASPHALT			ROADWAY CENTRELINE	
	UTILITIES ADJUSTED			MILLED SURFACE			NORTH OR WEST GUTTER	
	PLUG			PAVEMENT REPAIR FABRIC			SOUTH OR EAST GUTTER	
	HYDRANT							
	VALVE							
	CURB STOP							
	GROUND GRADE							
	PAVEMENT GRADE							
	ANCHOR							
	CIVIC ADDRESS							
	EXISTING							