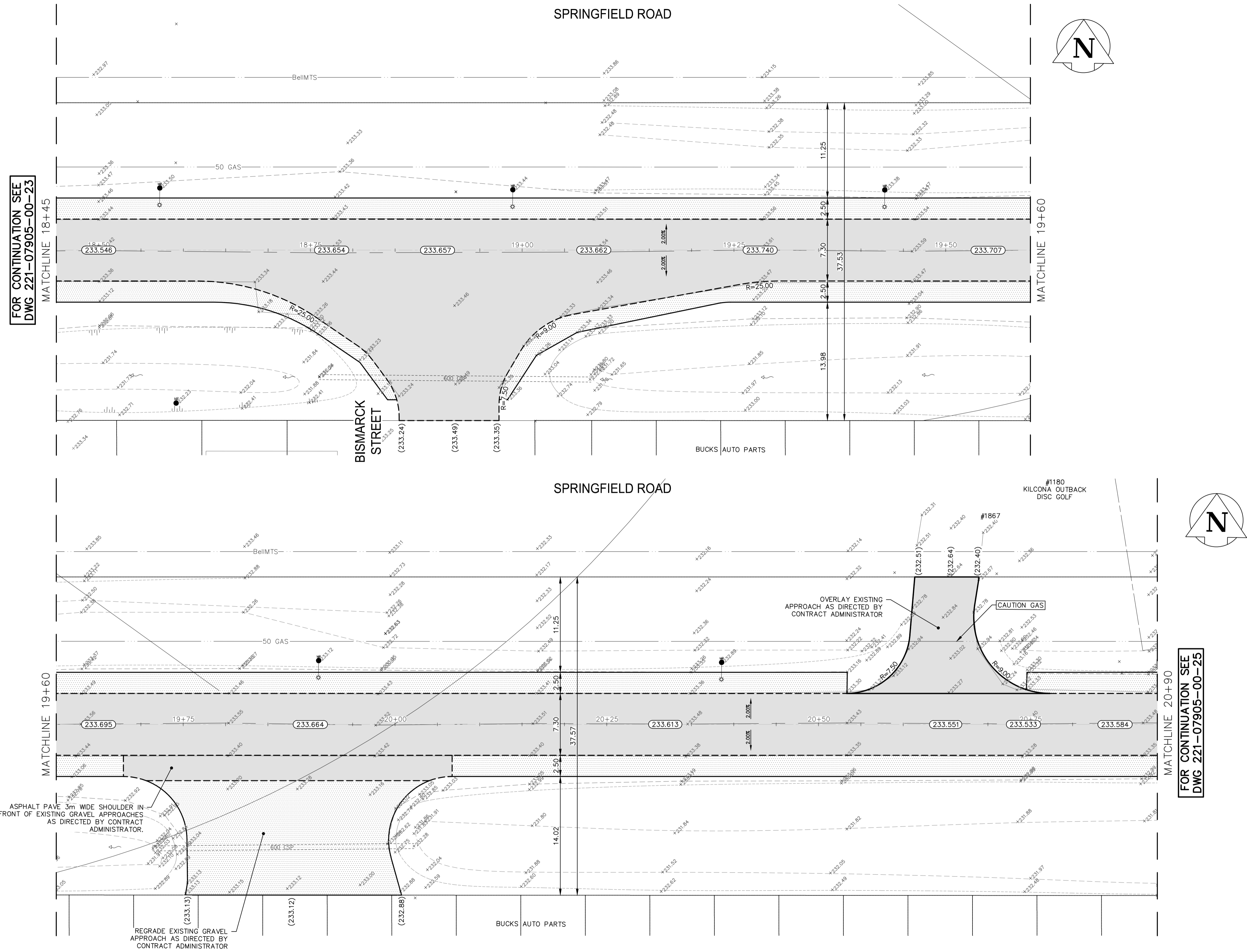


Apr 11, 2023 - 1:10pm
 P:\2022\221-07905-00 - 2023 Local Street Renewal 23-R1-02\4.0 Tech + Prof Services\14.11.06_Dwg\03_Work\21-07905-00_Springfield Rd_Plan&Profile.dwg - (tab:221-07905-00-24-R0)



FOR CONTINUATION SEE
 DWG 221-07905-00-23

FOR CONTINUATION SEE
 DWG 221-07905-00-25

NOTES:

1. ALL WORK AND MATERIALS TO BE IN ACCORDANCE WITH THE LATEST REVISION OF THE CITY OF WINNIPEG STANDARD CONSTRUCTION SPECIFICATIONS.
2. CONTRACTOR TO CONFIRM THE LOCATION OF ALL UTILITIES/SERVICES IN THE FIELD PRIOR TO CONSTRUCTION.
3. ALL ROADWAY DIMENSIONS SHOWN ARE TO BACK OF CURB.
4. CONTRACTORS TO TAKE PRECAUTIONARY STEPS TO PROTECT EXISTING TREES WITHIN THE LIMITS OF CONSTRUCTION FROM DAMAGE FROM CONSTRUCTION ACTIVITIES AS OUTLINED IN THE SPECIFICATIONS.
5. LAMP STANDARDS, HYDRO POLES, AND ANCHORS THAT REQUIRE TEMPORARY SUPPORT, REMOVAL OR REPLACEMENT, TO BE DONE SO AT THE EXPENSE OF THE CONTRACTOR AS NECESSARY.
6. ADJUST ALL WATER VALVES, HYDRANTS, MANHOLES, AND CATCH BASINS IN WORK AREA TO GRADE.
7. ASPHALT PULVERIZATION TO BE DONE ON THE MAINLINE ROADWAY ONLY.
8. REMOVAL OF EXISTING ASPHALT FOR TIE-INS TO BE DONE AS REQUIRED AND DIRECTED BY CONTRACT ADMINISTRATOR.
9. RECONSTRUCTION OF SECTIONS OF THE ROADWAY TO BE DONE AS REQUIRED AND DIRECTED BY CONTRACT ADMINISTRATOR. CONSTRUCT 100mm OF GRANULAR A BASE, 400mm-50mm GRANULAR A SUB-BASE, CLASS A GEOGRID, AND SEPARATION/FILTRATION GEOTEXTILE FABRIC.
10. REGRADE DITCH AS DIRECTED BY CONTRACT ADMINISTRATOR.

LOCATIONS APPROVED UNDERGROUND STRUCTURES

SIGNED BY: _____ DATE: _____
 SUPV UG STRUCTURES

LOCATION OF UNDERGROUND STRUCTURES AS SHOWN ARE BASED ON THE BEST INFORMATION AVAILABLE BUT NO GUARANTEE IS GIVEN THAT ALL EXISTING UTILITIES ARE SHOWN OR THAT THE GIVEN LOCATIONS ARE EXACT CONFIRMATION OF EXISTENCE AND EXACT LOCATION OF ALL SERVICES MUST BE OBTAINED FROM THE INDIVIDUAL UTILITIES BEFORE PROCEEDING

G.A.M. ELEV.	NO.	REVISIONS	DATE	BY
7				
6				
5				
4				
3				
2				
1				
0				

wsp

WSP Canada Inc.
 1600 Buffalo Place
 Winnipeg, MB R3T 6B8
 t. 204.477.6650
 f. 204.474.2864
 www.wsp.com

DESIGNED BY: KG	CHECKED BY: SS
DRAWN BY: KC	APPROVED BY: VM
HOR. SCALE: 1:250	RELEASED FOR CONSTRUCTION: _____
VERTICAL: N/A	DATE: SEPTEMBER 2022

EXISTING	LEGEND-PLAN	PROPOSED	EXISTING	LEGEND-PLAN	PROPOSED	EXISTING	LEGEND-PROFILE	PROPOSED
	WATER MAIN			IRON BAR			HYDRO POLE & LIGHT STANDARD	
	LAND DRAINAGE SEWER			LIGHT STANDARD OR TRAFFIC SIGNAL			HYDRO POLE	
	WASTE WATER SEWER			CURB RAMP			DETECTABLE WARNING SURFACE TILE	
	HYDRO			EDGE OF SIDEWALK			FENCE	
	Bell/MTS/SHAW/TELUS			PROPERTY LINE			EDGE OF ASPHALT	
	GAS			EDGE OF CONCRETE			MODIFIED BARRIER CURB	
	SIGNALS			BARRIER CURB			BARRIER CURB AND GUTTER	
	MANHOLE			CONC SIDEWALK			CONCRETE SLAB	
	CATCH BASIN			ASPHALT			MILLED SURFACE	
	CURB INLET			NORTH OR WEST SIDEWALK			SOUTH OR EAST SIDEWALK	
	UTILITIES ADJUSTED			ROADWAY CENTRELINE			NORTH OR WEST GUTTER	
	PLUG			SOUTH OR EAST GUTTER			MILLED SURFACE	
	HYDRANT			NORTH OR WEST SIDEWALK			CONCRETE SLAB	
	VALVE			ROADWAY CENTRELINE			MILLED SURFACE	
	CURB STOP			NORTH OR WEST GUTTER			ASPHALT	
	GROUND GRADE			SOUTH OR EAST GUTTER			MILLED SURFACE	
	PAVEMENT GRADE			NORTH OR WEST SIDEWALK			CONCRETE SLAB	
	ANCHOR			ROADWAY CENTRELINE			MILLED SURFACE	
	CIVIC ADDRESS			NORTH OR WEST GUTTER			ASPHALT	
	LEGEND-PLAN			SOUTH OR EAST GUTTER			MILLED SURFACE	

METRIC

WHOLE NUMBERS INDICATE MILLIMETRES
 DECIMALIZED NUMBERS INDICATE METRES

ENGINEERS GEOSCIENTISTS MANITOBA
 Certificate of Authorization
 WSP Canada Inc.
 No. 5750

FOR TENDER PURPOSES ONLY

NOT FOR CONSTRUCTION

THE CITY OF WINNIPEG
 PUBLIC WORKS DEPARTMENT
 ENGINEERING SERVICES DIVISION

CITY DRAWING NUMBER

SHEET **08** OF **10**

TENDER NO.
182-2023

2023 INDUSTRIAL STREET RENEWALS

SPRINGFIELD ROAD

AC REHABILITATION
 STA. 18+45 TO STA. 20+90

ENGINEER'S SEAL

2023-04-11

CONSULTANT ACAD DWG. NO.
 221-07905-00-24