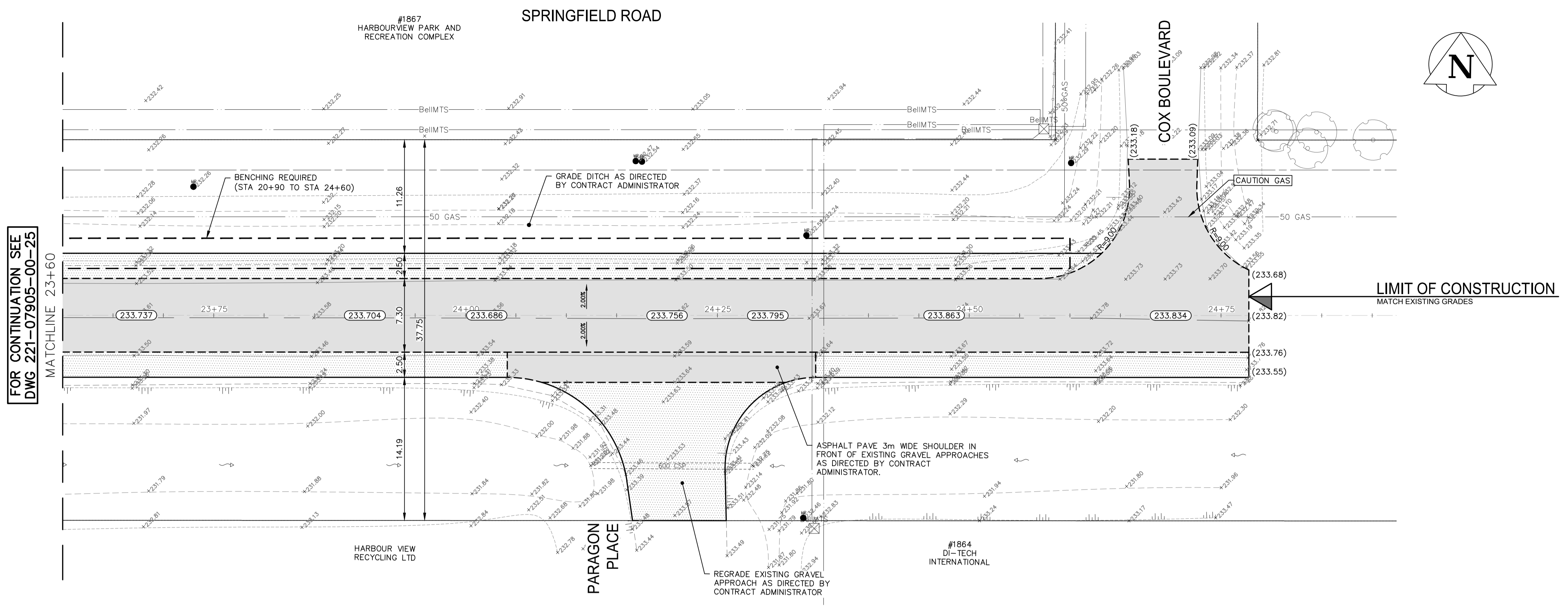
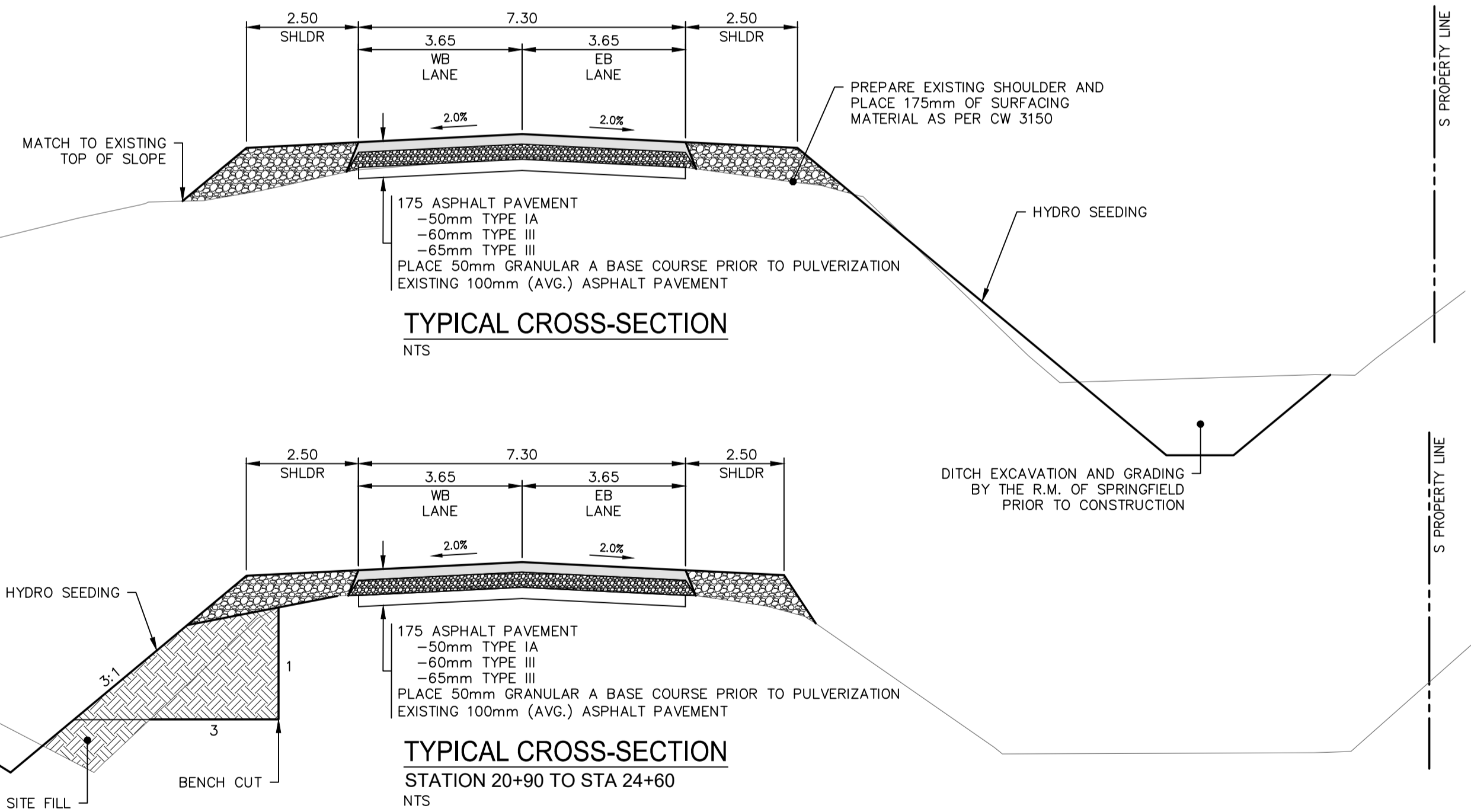
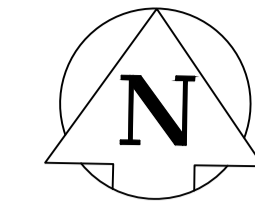


Apr 11, 2023 - 1:23pm P:\2022\221-07905-00 - Prof Services\14.11.06\_Dwg\03\_Work\221-07905-00\_Springfield Rd\_Plan&Profile.dwg - (tab:221-07905-00-25-R0



FOR CONTINUATION SEE DWG 221-07905-00-25

MATCHLINE 23+60



- NOTES:**
1. ALL WORK AND MATERIALS TO BE IN ACCORDANCE WITH THE LATEST REVISION OF THE CITY OF WINNIPEG STANDARD CONSTRUCTION SPECIFICATIONS.
  2. CONTRACTOR TO CONFIRM THE LOCATION OF ALL UTILITIES/SERVICES IN THE FIELD PRIOR TO CONSTRUCTION.
  3. ALL ROADWAY DIMENSIONS SHOWN ARE TO BACK OF CURB.
  4. CONTRACTORS TO TAKE PRECAUTIONARY STEPS TO PROTECT EXISTING TREES WITHIN THE LIMITS OF CONSTRUCTION FROM DAMAGE FROM CONSTRUCTION ACTIVITIES AS OUTLINED IN THE SPECIFICATIONS.
  5. LAMP STANDARDS, HYDRO POLES, AND ANCHORS THAT REQUIRE TEMPORARY SUPPORT, REMOVAL OR REPLACEMENT, TO BE DONE SO AT THE EXPENSE OF THE CONTRACTOR AS NECESSARY.
  6. ADJUST ALL WATER VALVES, HYDRANTS, MANHOLES, AND CATCH BASINS IN WORK AREA TO GRADE.
  7. ASPHALT PULVERIZATION TO BE DONE ON THE MAINLINE ROADWAY ONLY.
  8. REMOVAL OF EXISTING ASPHALT FOR TIE-INS TO BE DONE AS REQUIRED AND DIRECTED BY CONTRACT ADMINISTRATOR.
  9. RECONSTRUCTION OF SECTIONS OF THE ROADWAY TO BE DONE AS REQUIRED AND DIRECTED BY CONTRACT ADMINISTRATOR. CONSTRUCT 100mm OF GRANULAR A BASE, 400mm-50mm GRANULAR A SUB-BASE, CLASS A GEOGRID, AND SEPARATION/FILTRATION GEOTEXTILE FABRIC.
  10. REGRADE DITCH AS DIRECTED BY CONTRACT ADMINISTRATOR.

LOCATIONS APPROVED UNDERGROUND STRUCTURES		G.A.M. ELEV.
7		
6		
5		
4		
3		
2		
1		
0	ISSUED FOR TENDER	2023/04/11 K.G.
NO.	REVISIONS	DATE BY

**wsp**

DESIGNED BY: **KG** CHECKED BY: **SS**

DRAWN BY: **KC** APPROVED BY: **VM**

HOR. SCALE: **1:250** RELEASED FOR CONSTRUCTION

VERTICAL: **N/A**

DATE: **SEPTEMBER 2022**

WSP Canada Inc.  
1600 Buffalo Place  
Winnipeg, MB R3T 6B8  
t. 204.477.6650  
f. 204.474.2864  
www.wsp.com

EXISTING	LEGEND-PLAN	PROPOSED	EXISTING	LEGEND-PLAN	PROPOSED	EXISTING	LEGEND-PROFILE	PROPOSED
---	WATER MAIN	---	⊕	IRON BAR	---	---	NORTH OR WEST SIDEWALK	---
---	LAND DRAINAGE SEWER	---	⊕	HYDRO POLE & LIGHT STANDARD	---	---	SOUTH OR EAST SIDEWALK	---
---	WASTE WATER SEWER	---	⊕	LIGHT STANDARD OR TRAFFIC SIGNAL	---	---	ROADWAY CENTRELINE	---
---	HYDRO	---	HP	HYDRO POLE	---	---	NORTH OR WEST GUTTER	---
---	BellMITS/SHAW/TELUS	---	⊕	CURB RAMP	---	---	SOUTH OR EAST GUTTER	---
---	GAS	---	⊕	DETECTABLE WARNING SURFACE TILE	---	---	MILLED SURFACE	---
---	SIGNALS	---	---	EDGE OF SIDEWALK	---	---	PAVEMENT REPAIR FABRIC	---
---	MANHOLE	---	⊕	FENCE	---	---		
---	CATCH BASIN	---	⊕	PROPERTY LINE	---	---		
---	CURB INLET	---	⊕	EDGE OF ASPHALT	---	---		
---	UTILITIES ADJUSTED	---	⊕	EDGE OF CONCRETE	---	---		
---	PLUG	---	⊕	MODIFIED BARRIER CURB	---	---		
---	HYDRANT	---	⊕	BARRIER CURB	---	---		
---	VALVE	---	⊕	BARRIER CURB AND GUTTER	---	---		
---	CURB STOP	---	⊕	CONC SIDEWALK	---	---		
---	GROUND GRADE	---	---	CONCRETE SLAB	---	---		
---	PAVEMENT GRADE	---	---	ASPHALT	---	---		
---	ANCHOR	---	---	MILLED SURFACE	---	---		
---	CIVIC ADDRESS	---	---	PAVEMENT REPAIR FABRIC	---	---		
---	LEGEND-PLAN	---	---	LEGEND-PLAN	---	---		

**METRIC**  
WHOLE NUMBERS INDICATE MILLIMETRES  
DECIMALIZED NUMBERS INDICATE METRES

**ENGINEERS GEOSCIENTISTS MANITOBA**  
Certificate of Authorization  
WSP Canada Inc.  
No. 5750

**FOR TENDER PURPOSES ONLY**  
**NOT FOR CONSTRUCTION**

**THE CITY OF WINNIPEG**  
PUBLIC WORKS DEPARTMENT  
ENGINEERING SERVICES DIVISION

**2023 INDUSTRIAL STREET RENEWALS**

SPRINGFIELD ROAD

AC REHABILITATION  
STA. 23+60 TO STA. 24+77.75

CITY DRAWING NUMBER: SHEET 10 OF 10  
TENDER NO. 182-2023