

THE CITY OF WINNIPEG

PUBLIC WORKS DEPARTMENT ENGINEERING SERVICES DIVISION

TENDER NO. 267-2023

2023 LOCAL STREET RENEWALS: MANAHAN AVENUE AND VARIOUS OTHER LOCATIONS

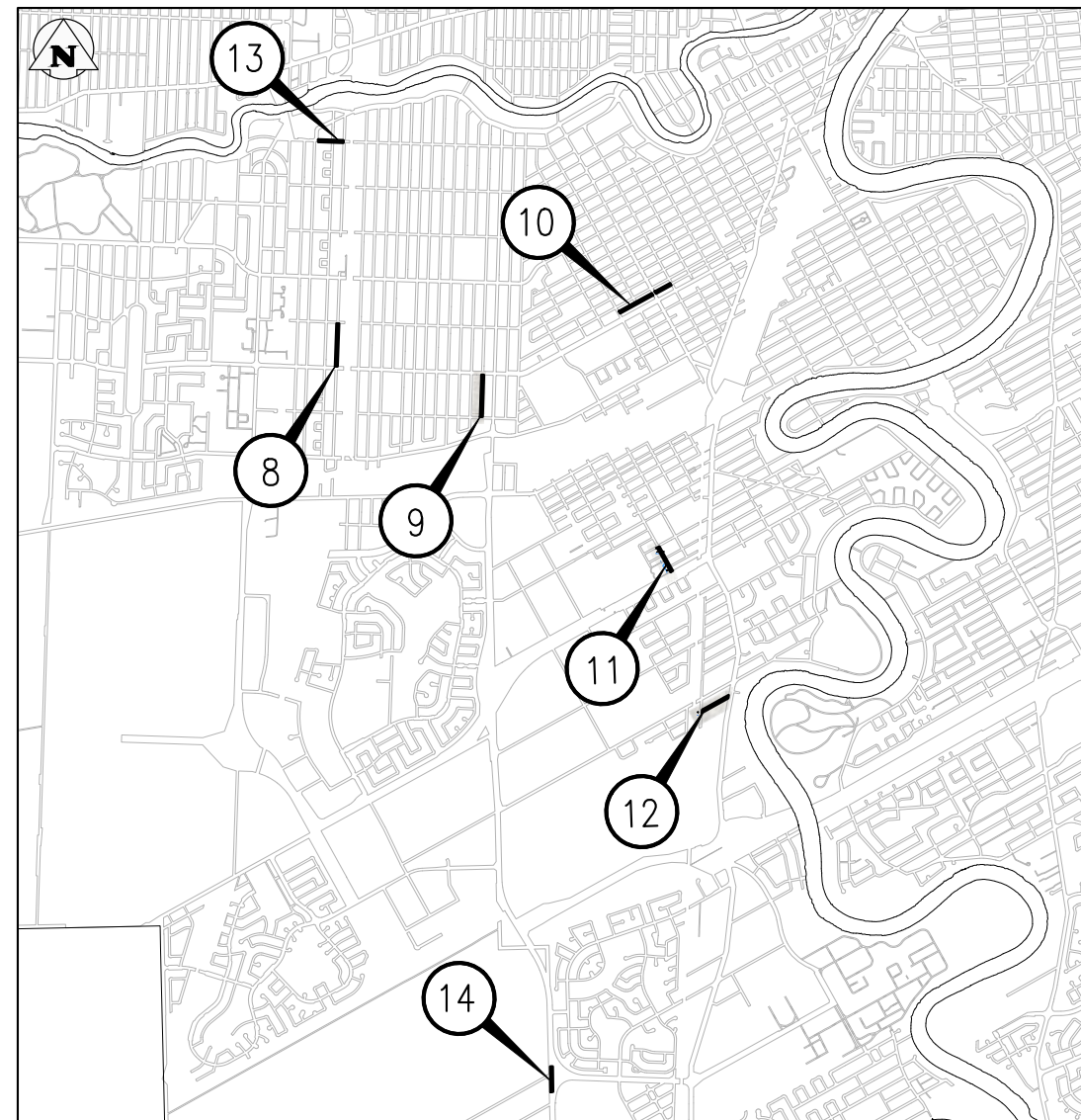
PHASING & SIGNAGE PLAN

PHASING & SIGNAGE PLAN INDEX

CONSULTANT DRAWING #	SHEET #	SITE #	TITLE
F-0000	1		MAP & LEGEND
F-0801	2	8	RENFREW STREET: MAJOR REHABILITATION - FULL CLOSURE
F-0901	3	9	MONTROSE STREET: MAJOR REHABILITATION - FULL CLOSURE
F-1001	4	10	SCOTLAND AVENUE: MINOR REHABILITATION - SHEET 1
F-1002	5	10	SCOTLAND AVENUE: MINOR REHABILITATION - SHEET 2
F-1003	6	10	SCOTLAND AVENUE: MAJOR REHABILITATION - SHEET 3
F-1101	7	11	BEAUMONT AVENUE: AC REHABILITATION - SHEET 1
F-1102	8	11	BEAUMONT AVENUE: AC REHABILITATION - SHEET 2
F-1201	9	12	MANAHAN AVENUE: AC RECONSTRUCTION - PHASE 1 SHEET 1
F-1201	10	12	MANAHAN AVENUE: AC RECONSTRUCTION - PHASE 1 SHEET 2
F-1201	11	12	MANAHAN AVENUE: AC RECONSTRUCTION - PHASE 2 SHEET 1
F-1201	12	12	MANAHAN AVENUE: AC RECONSTRUCTION - PHASE 2 SHEET 2
F-1301	13	13	ACADEMY ROAD: MILL & FILL - WELLINGTON CRES S. TO RENFREW ST - PHASE 1
F-1301	14	13	ACADEMY ROAD: MILL & FILL - WELLINGTON CRES S. TO RENFREW ST - PHASE 2
F-1404	15	14	WAVERLEY ROAD: MILL & FILL - CADBORO TO EASTBOUND TURNOFF

GENERAL NOTES:

- ALL TEMPORARY TRAFFIC CONTROL TO BE IN ACCORDANCE WITH THE LATEST MANUAL OF TEMPORARY TRAFFIC CONTROL ON CITY STREETS (MTTC) AT TENDER.
- PERFORM WORK IN PHASES & STAGES TO MINIMIZE IMPACT TO TRAFFIC FLOW AND ACCESS TO RESIDENCES.
- NOT ALL REQUIRED SIGNAGE IS SHOWN FOR EACH PHASE & SUB-PHASE. ADDITIONAL SIGNAGE TO PROVIDED IN ACCORDANCE WITH THE MTTC.
- THE PERMANENT POSTED SPEED LIMIT OF 50 KM/HR SHALL BE USED FOR ALL TAPER LENGTHS AND OTHER CRITERIA IN THE MTTC.
- CONTRACTOR SHALL SUBMIT THE PEDESTRIAN ACCESSIBILITY PLAN FOR REVIEW & ACCEPTANCE BY THE CONTRACT ADMINISTRATOR.
- CONTRACTOR SHALL BE RESPONSIBLE FOR ALL PERMITS, THE SUPPLY, PLACEMENT & MAINTENANCE OF ALL TEMPORARY TRAFFIC CONTROL SIGNAGE IN ACCORDANCE WITH THE TENDER.
- ALL LANE CLOSURE REQUESTS MUST BE SUBMITTED THROUGH THE CONTRACT ADMINISTRATOR & ARE SUBJECT TO THE APPROVAL OF THE TRAFFIC MANAGEMENT BRANCH.
- CONTRACTOR TO PROVIDE FLAGPERSONS IN ACCORDANCE WITH THE MTTC WHEN MOVING MATERIALS OR EQUIPMENT INTO OR OUT OF TRAFFIC.
- CONTRACTOR SHALL PROVIDE FLAGPERSONS DURING ALL ASPHALT PLACEMENT AT THE PROJECT LIMITS TO MINIMIZE IMPACT TO TRAFFIC.
- WHEN FLAGPERSONS ARE PRESENT, FLAGPERSON SIGNAGE MUST BE PLACED IN ACCORDANCE WITH THE MTTC.
- WHEN FLAGPERSONS ARE NOT PRESENT, THE FLAGPERSON SIGNAGE MUST BE REMOVED OR HIDDEN.
- PROVIDE TEMPORARY RAMPS & CROSSING WHERE DIRECTED BY CONTRACT ADMINISTRATOR & IN ACCORDANCE WITH THE ACCESSIBILITY PLAN FOR PEDESTRIAN CROSSINGS WHILE PERFORMING WORK IN THE INTERSECTIONS AND APPROACHES.
- INSTALL WARNING FLAGS IN ACCORDANCE WITH MTTC 3.07.04 ON THE FIRST WARNING SIGN IN EACH LANE DROP TAPER.
- WHERE A LANE IS REQUIRED TO BE CLOSED ON MAJOR INTERSECTING STREETS PERFORM THE WORK ON THE TIE-IN DURING OFF PEAK-HOURS.
- TEMPORARY TRANSIT LANDINGS WILL BE REQUIRED FOR ANY TEMPORARY TRANSIT STOP RELOCATIONS IN ACCORDANCE WITH THE MTTC.
- CONTRACTOR TO MONITOR & MAINTAIN THE TEMPORARY SIGNAGE FOR THE DURATION OF THE PROJECT & MODIFY AS NEEDED FOR EACH STAGE OF THE WORKS.
- CONTRACTOR TO REMEDY ANY SIGNAGE DEEMED INSUFFICIENT OR INCORRECT AS DIRECTED BY THE CONTRACT ADMINISTRATOR OR TRAFFIC MANAGEMENT.
- STAGE SIDEWALK WORK SUCH THAT PEDESTRIAN ACCESS IS MAINTAINED ALONG ONE SIDE OF EACH ROADWAY AT ALL TIMES.
- PROVIDE ADVANCED CONSTRUCTION & SIDEWALK CLOSED/DETOUR SIGNAGE IN ACCORDANCE WITH THE MTTC. PROVIDE SMALL CONES IN CENTRE WHERE BARRICADES .GUIDE PEDESTRIANS THROUGH THE CONSTRUCTION ZONE.



SITE LOCATION PLAN

- WARNING FLAGS
- REFLECTORIZED BARRICADE
- CHANNELIZATION BARREL
- TALL CONE
- PEDESTRIANS
- TEMPORARY TRAFFIC FLOW
- NORMAL TRAFFIC FLOW

PEDESTRIAN ACCOMMODATION:
WHERE PEDESTRIANS CROSS THE WORK SITE A LOW BARRIER SHALL BE USED IN ACCORDANCE WITH THE MTTC.
AN ACCEPTABLE ALTERNATE SOLUTION IS TO USE PYLONS IN CONJUNCTION WITH BARRIERS.

TENDER NO. 267-2023

THE CITY OF WINNIPEG PUBLIC WORKS DEPARTMENT ENGINEERING DIVISION			
PROJECT TITLE		SHEET OF	
2023 LOCAL STREET RENEWALS: MANAHAN AVENUE & VARIOUS OTHER LOCATIONS		1 15	
PHASING & SIGNAGE PLAN: MAP & LEGEND		COMPUTER FILE NAME	
		22-0107-009	
		FIGURE	
		F-0000	

NO.	REVISIONS	DATE	BY
A	ISSUED FOR REVIEW	23/04/24	GES



FULL LENGTH OF STREET NOT SHOWN FOR CLARITY TOTAL LENGTH ≈ 490m

STAGING & SIGNAGE: FULL CLOSURE

SCALE: NTS

- ↔ PEDESTRIANS
- TEMPORARY TRAFFIC FLOW

GENERAL NOTES:

1. ALL TEMPORARY TRAFFIC CONTROL TO BE IN ACCORDANCE WITH THE LATEST MANUAL OF TEMPORARY TRAFFIC CONTROL ON CITY STREETS (MTTC) AT TENDER.
2. PERFORM WORK IN PHASES & STAGES TO MINIMIZE IMPACT TO TRAFFIC FLOW AND ACCESS TO RESIDENCES.
3. NOT ALL REQUIRED SIGNAGE IS SHOWN FOR EACH PHASE & SUB-PHASE. ADDITIONAL SIGNAGE TO PROVIDED IN ACCORDANCE WITH THE MTTC.
4. THE PERMANENT POSTED SPEED LIMIT OF 50 KM/HR SHALL BE USED FOR ALL TAPER LENGTHS AND OTHER CRITERIA IN THE MTTC.
5. CONTRACTOR SHALL SUBMIT THE PEDESTRIAN ACCESSIBILITY PLAN FOR REVIEW & ACCEPTANCE BY THE CONTRACT ADMINISTRATOR.
6. CONTRACTOR SHALL BE RESPONSIBLE FOR ALL PERMITS, THE SUPPLY, PLACEMENT & MAINTENANCE OF ALL TEMPORARY TRAFFIC CONTROL SIGNAGE IN ACCORDANCE WITH THE TENDER.
7. ALL LANE CLOSURE REQUESTS MUST BE SUBMITTED THROUGH THE CONTRACT ADMINISTRATOR & ARE SUBJECT TO THE APPROVAL OF THE TRAFFIC MANAGEMENT BRANCH.
8. CONTRACTOR TO PROVIDE FLAGPERSONS IN ACCORDANCE WITH THE MTTC WHEN MOVING MATERIALS OR EQUIPMENT INTO OR OUT OF TRAFFIC.
9. CONTRACTOR SHALL PROVIDE FLAGPERSONS DURING ALL ASPHALT PLACEMENT AT THE PROJECT LIMITS TO MINIMIZE IMPACT TO TRAFFIC.
10. WHEN FLAGPERSONS ARE PRESENT, FLAGPERSON SIGNAGE MUST BE PLACED IN ACCORDANCE WITH THE MTTC.

11. WHEN FLAGPERSONS ARE NOT PRESENT, THE FLAGPERSON SIGNAGE MUST BE REMOVED OR HIDDEN.
12. PROVIDE TEMPORARY RAMPS & CROSSING WHERE DIRECTED BY CONTRACT ADMINISTRATOR & IN ACCORDANCE WITH THE ACCESSIBILITY PLAN FOR PEDESTRIAN CROSSINGS WHILE PERFORMING WORK IN THE INTERSECTIONS AND APPROACHES.
13. INSTALL WARNING FLAGS IN ACCORDANCE WITH MTTC 3.07.04 ON THE FIRST WARNING SIGN IN EACH LANE DROP TAPER.
14. WHERE A LANE IS REQUIRED TO BE CLOSED ON MAJOR INTERSECTING STREETS PERFORM THE WORK ON THE TIE-IN DURING OFF PEAK-HOURS.
15. TEMPORARY TRANSIT LANDINGS WILL BE REQUIRED FOR ANY TEMPORARY TRANSIT STOP RELOCATIONS IN ACCORDANCE WITH THE MTTC.
16. CONTRACTOR TO MONITOR & MAINTAIN THE TEMPORARY SIGNAGE FOR THE DURATION OF THE PROJECT & MODIFY AS NEEDED FOR EACH STAGE OF THE WORKS.
17. CONTRACTOR TO REMEDY ANY SIGNAGE DEEMED INSUFFICIENT OR INCORRECT AS DIRECTED BY THE CONTRACT ADMINISTRATOR OR TRAFFIC MANAGEMENT.
18. STAGE SIDEWALK WORK SUCH THAT PEDESTRIAN ACCESS IS MAINTAINED ALONG ONE SIDE OF EACH ROADWAY AT ALL TIMES.
19. PROVIDE ADVANCED CONSTRUCTION & SIDEWALK CLOSED/DETOUR SIGNAGE IN ACCORDANCE WITH THE MTTC. PROVIDE SMALL CONES IN CENTRE WHERE BARRICADES .GUIDE PEDESTRIANS THROUGH THE CONSTRUCTION ZONE.

- TRAFFIC MANAGEMENT: RENFREW MINOR REHAB**
1. FULL CLOSURE PERMITTED FROM GRANT AVE TO JOHN BREBEUF AVE.
 2. COORDINATE WITH TENDER 716-2023 FOR WORK ALONG GRANT AVE.
 3. COORDINATE WITH TENDER 273-2022 FOR WORK SOUTH OF GRANT ON RENFREW.
 4. COMPLETE WORKS ON NORTH LIMITS PRIOR TO SCHOOL STARTING.
 5. COORDINATE PHASING, SIGNAGE, & ACCESS WITH TENDER 718-2021 & TENDER 273-2022.
 6. SEE MTTC FIGURE 30.

PROPERTY LIMITS DELINEATION

DELINEATION OF PROPERTY LIMITS AS SHOWN ON THIS DWG DOES NOT REPRESENT A "LEGAL SURVEY". KGS GROUP MAKES NO REPRESENTATION OR WARRANTY AS TO THE ACCURACY OF PROPERTY LIMITS DELINEATED ON THIS DWG, NOR ON THE DIMENSIONAL ACCURACY OF DWG FEATURES RELATIVE TO THOSE PROPERTY LIMITS.

METRIC

WHOLE NUMBERS INDICATE MILLIMETRES
DECIMALIZED NUMBERS INDICATE METRES

TENDER NO. 267-2023

THE CITY OF WINNIPEG
PUBLIC WORKS DEPARTMENT
ENGINEERING DIVISION

PROJECT TITLE
2023 LOCAL STREET RENEWALS: MANAHAN AVENUE & VARIOUS OTHER LOCATIONS

PHASING & SIGNAGE PLAN:
RENFREW STREET: MAJOR REHABILITATION FULL CLOSURE

A	ISSUED FOR REVIEW	23/04/24	GES
NO.	REVISIONS	DATE	BY

SHEET	OF
2	15
COMPUTER FILE NAME	
22-0107-009	
FIGURE	
F-0801	

Files: C:\Users\jgiblin\OneDrive\Desktop\FMS\22-0107-009\22-0107-009_C2_267-2023_F-ALL_Signage Figures - Tab.F-0801 Plotted By: GSmalley 23/04/24 [Mon 9:58pm]
 All rights reserved.



STAGING & SIGNAGE: FULL CLOSURE

SCALE: NTS

- ↔ PEDESTRIANS
- TEMPORARY TRAFFIC FLOW

PROPERTY LIMITS DELINEATION

DELINEATION OF PROPERTY LIMITS AS SHOWN ON THIS DWG DOES NOT REPRESENT A "LEGAL SURVEY". KGS GROUP MAKES NO REPRESENTATION OR WARRANTY AS TO THE ACCURACY OF PROPERTY LIMITS DELINEATED ON THIS DWG, NOR ON THE DIMENSIONAL ACCURACY OF DWG FEATURES RELATIVE TO THOSE PROPERTY LIMITS.

METRIC

WHOLE NUMBERS INDICATE MILLIMETRES
DECIMALIZED NUMBERS INDICATE METRES

GENERAL NOTES:

1. ALL TEMPORARY TRAFFIC CONTROL TO BE IN ACCORDANCE WITH THE LATEST MANUAL OF TEMPORARY TRAFFIC CONTROL ON CITY STREETS (MTTC) AT TENDER.
2. PERFORM WORK IN PHASES & STAGES TO MINIMIZE IMPACT TO TRAFFIC FLOW AND ACCESS TO RESIDENCES.
3. NOT ALL REQUIRED SIGNAGE IS SHOWN FOR EACH PHASE & SUB-PHASE. ADDITIONAL SIGNAGE TO PROVIDED IN ACCORDANCE WITH THE MTTC.
4. THE PERMANENT POSTED SPEED LIMIT OF 50 KM/HR SHALL BE USED FOR ALL TAPER LENGTHS AND OTHER CRITERIA IN THE MTTC.
5. CONTRACTOR SHALL SUBMIT THE PEDESTRIAN ACCESSIBILITY PLAN FOR REVIEW & ACCEPTANCE BY THE CONTRACT ADMINISTRATOR.
6. CONTRACTOR SHALL BE RESPONSIBLE FOR ALL PERMITS, THE SUPPLY, PLACEMENT & MAINTENANCE OF ALL TEMPORARY TRAFFIC CONTROL SIGNAGE IN ACCORDANCE WITH THE TENDER.
7. ALL LANE CLOSURE REQUESTS MUST BE SUBMITTED THROUGH THE CONTRACT ADMINISTRATOR & ARE SUBJECT TO THE APPROVAL OF THE TRAFFIC MANAGEMENT BRANCH.
8. CONTRACTOR TO PROVIDE FLAGPERSONS IN ACCORDANCE WITH THE MTTC WHEN MOVING MATERIALS OR EQUIPMENT INTO OR OUT OF TRAFFIC.
9. CONTRACTOR SHALL PROVIDE FLAGPERSONS DURING ALL ASPHALT PLACEMENT AT THE PROJECT LIMITS TO MINIMIZE IMPACT TO TRAFFIC.
10. WHEN FLAGPERSONS ARE PRESENT, FLAGPERSON SIGNAGE MUST BE PLACED IN ACCORDANCE WITH THE MTTC.

11. WHEN FLAGPERSONS ARE NOT PRESENT, THE FLAGPERSON SIGNAGE MUST BE REMOVED OR HIDDEN.
12. PROVIDE TEMPORARY RAMPS & CROSSING WHERE DIRECTED BY CONTRACT ADMINISTRATOR & IN ACCORDANCE WITH THE ACCESSIBILITY PLAN FOR PEDESTRIAN CROSSINGS WHILE PERFORMING WORK IN THE INTERSECTIONS AND APPROACHES.
13. INSTALL WARNING FLAGS IN ACCORDANCE WITH MTTC 3.07.04 ON THE FIRST WARNING SIGN IN EACH LANE DROP TAPER.
14. WHERE A LANE IS REQUIRED TO BE CLOSED ON MAJOR INTERSECTING STREETS PERFORM THE WORK ON THE TIE-IN DURING OFF PEAK-HOURS.
15. TEMPORARY TRANSIT LANDINGS WILL BE REQUIRED FOR ANY TEMPORARY TRANSIT STOP RELOCATIONS IN ACCORDANCE WITH THE MTTC.
16. CONTRACTOR TO MONITOR & MAINTAIN THE TEMPORARY SIGNAGE FOR THE DURATION OF THE PROJECT & MODIFY AS NEEDED FOR EACH STAGE OF THE WORKS.
17. CONTRACTOR TO REMEDY ANY SIGNAGE DEEMED INSUFFICIENT OR INCORRECT AS DIRECTED BY THE CONTRACT ADMINISTRATOR OR TRAFFIC MANAGEMENT.
18. STAGE SIDEWALK WORK SUCH THAT PEDESTRIAN ACCESS IS MAINTAINED ALONG ONE SIDE OF EACH ROADWAY AT ALL TIMES.
19. PROVIDE ADVANCED CONSTRUCTION & SIDEWALK CLOSED/DETOUR SIGNAGE IN ACCORDANCE WITH THE MTTC. PROVIDE SMALL CONES IN CENTRE WHERE BARRICADES .GUIDE PEDESTRIANS THROUGH THE CONSTRUCTION ZONE.

TRAFFIC MANAGEMENT: MONTROSE MAJOR REHAB

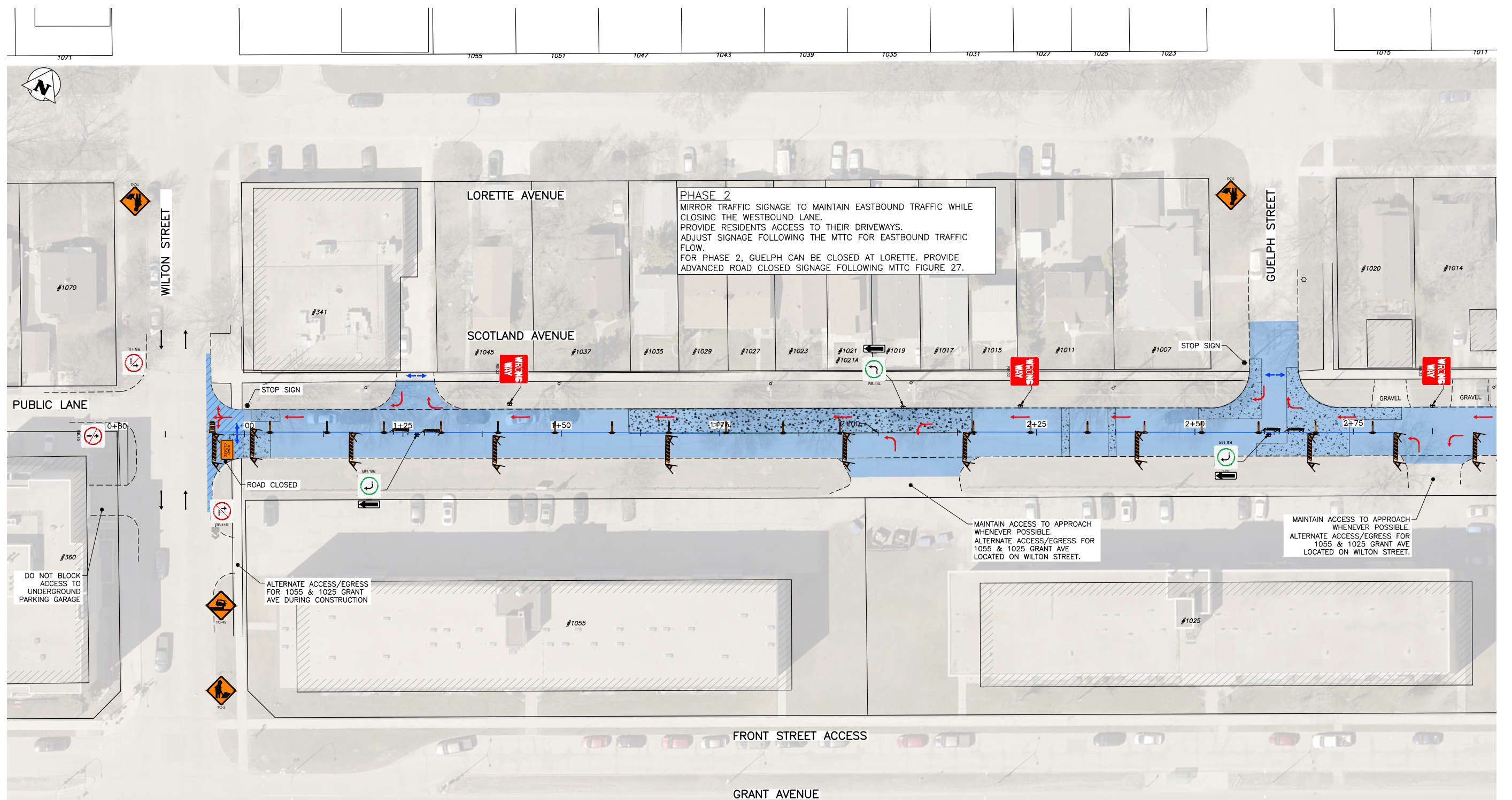
1. FULL CLOSURE PERMITTED FROM MATHERS AVE TO GRANT AVENUE.
2. PROVIDE ADVANCED SIGNAGE.
3. MAINTAIN AT LEAST ONE SIDEWALK OPEN AT ALL TIMES.
4. COORDINATE PHASING, SIGNAGE, & ACCESS WITH TENDER 716-2021.
5. SEE MTTC FIGURE 30.

TENDER NO. 267-2023

<p>THE CITY OF WINNIPEG PUBLIC WORKS DEPARTMENT ENGINEERING DIVISION</p>		SHEET	OF
		3	15
PROJECT TITLE 2023 LOCAL STREET RENEWALS: MANAHAN AVENUE & VARIOUS OTHER LOCATIONS		COMPUTER FILE NAME	
		22-0107-009	
PHASING & SIGNAGE PLAN: MONTROSE STREET: MAJOR REHABILITATION FULL CLOSURE		FIGURE	
		F-0901	

NO.	REVISIONS	DATE	BY
A	ISSUED FOR REVIEW	23/04/24	GES

Files: C:\Users\jgibson\OneDrive\Desktop\FMS\22-0107-009\22-0107-009_C2_267-2023_F-ALL_Signage Figures - Tab.F-0901 Plotted By: GSmalley 23/04/24 [Mon 10:00pm]
 All Rights Reserved / Plot Scale: 1:1



PHASE 2
 MIRROR TRAFFIC SIGNAGE TO MAINTAIN EASTBOUND TRAFFIC WHILE CLOSING THE WESTBOUND LANE.
 PROVIDE RESIDENTS ACCESS TO THEIR DRIVEWAYS.
 ADJUST SIGNAGE FOLLOWING THE MITC FOR EASTBOUND TRAFFIC FLOW.
 FOR PHASE 2, GUELPH CAN BE CLOSED AT LORETTE. PROVIDE ADVANCED ROAD CLOSED SIGNAGE FOLLOWING MITC FIGURE 27.

STAGING & SIGNAGE: PHASE 1

SCALE: NTS

- ↔ PEDESTRIANS
- TEMPORARY TRAFFIC FLOW

PROPERTY LIMITS DELINEATION

DELINEATION OF PROPERTY LIMITS AS SHOWN ON THIS DWG DOES NOT REPRESENT A "LEGAL SURVEY". KGS GROUP MAKES NO REPRESENTATION OR WARRANTY AS TO THE ACCURACY OF PROPERTY LIMITS DELINEATED ON THIS DWG, NOR ON THE DIMENSIONAL ACCURACY OF DWG FEATURES RELATIVE TO THOSE PROPERTY LIMITS.

METRIC

WHOLE NUMBERS INDICATE MILLIMETRES
 DECIMALIZED NUMBERS INDICATE METRES

GENERAL NOTES:

1. ALL TEMPORARY TRAFFIC CONTROL TO BE IN ACCORDANCE WITH THE LATEST MANUAL OF TEMPORARY TRAFFIC CONTROL ON CITY STREETS (MITC) AT TENDER.
2. PERFORM WORK IN PHASES & STAGES TO MINIMIZE IMPACT TO TRAFFIC FLOW AND ACCESS TO RESIDENCES.
3. NOT ALL REQUIRED SIGNAGE IS SHOWN FOR EACH PHASE & SUB-PHASE. ADDITIONAL SIGNAGE TO PROVIDED IN ACCORDANCE WITH THE MITC.
4. THE PERMANENT POSTED SPEED LIMIT OF 50 KM/HR SHALL BE USED FOR ALL TAPER LENGTHS AND OTHER CRITERIA IN THE MITC.
5. CONTRACTOR SHALL SUBMIT THE PEDESTRIAN ACCESSIBILITY PLAN FOR REVIEW & ACCEPTANCE BY THE CONTRACT ADMINISTRATOR.
6. CONTRACTOR SHALL BE RESPONSIBLE FOR ALL PERMITS, THE SUPPLY, PLACEMENT & MAINTENANCE OF ALL TEMPORARY TRAFFIC CONTROL SIGNAGE IN ACCORDANCE WITH THE TENDER.
7. ALL LANE CLOSURE REQUESTS MUST BE SUBMITTED THROUGH THE CONTRACT ADMINISTRATOR & ARE SUBJECT TO THE APPROVAL OF THE TRAFFIC MANAGEMENT BRANCH.
8. CONTRACTOR TO PROVIDE FLAGPERSONS IN ACCORDANCE WITH THE MITC WHEN MOVING MATERIALS OR EQUIPMENT INTO OR OUT OF TRAFFIC.
9. CONTRACTOR SHALL PROVIDE FLAGPERSONS DURING ALL ASPHALT PLACEMENT AT THE PROJECT LIMITS TO MINIMIZE IMPACT TO TRAFFIC.
10. WHEN FLAGPERSONS ARE PRESENT, FLAGPERSON SIGNAGE MUST BE PLACED IN ACCORDANCE WITH THE MITC.
11. WHEN FLAGPERSONS ARE NOT PRESENT, THE FLAGPERSON SIGNAGE MUST BE REMOVED OR HIDDEN.
12. PROVIDE TEMPORARY RAMPS & CROSSING WHERE DIRECTED BY CONTRACT ADMINISTRATOR & IN ACCORDANCE WITH THE ACCESSIBILITY PLAN FOR PEDESTRIAN CROSSINGS WHILE PERFORMING WORK IN THE INTERSECTIONS AND APPROACHES.
13. INSTALL WARNING FLAGS IN ACCORDANCE WITH MITC 3.07.04 ON THE FIRST WARNING SIGN IN EACH LANE DROP TAPER.
14. WHERE A LANE IS REQUIRED TO BE CLOSED ON MAJOR INTERSECTING STREETS PERFORM THE WORK ON THE TIE-IN DURING OFF PEAK-HOURS.
15. TEMPORARY TRANSIT LANDINGS WILL BE REQUIRED FOR ANY TEMPORARY TRANSIT STOP RELOCATIONS IN ACCORDANCE WITH THE MITC.
16. CONTRACTOR TO MONITOR & MAINTAIN THE TEMPORARY SIGNAGE FOR THE DURATION OF THE PROJECT & MODIFY AS NEEDED FOR EACH STAGE OF THE WORKS.
17. CONTRACTOR TO REMEDY ANY SIGNAGE DEEMED INSUFFICIENT OR INCORRECT AS DIRECTED BY THE CONTRACT ADMINISTRATOR OR TRAFFIC MANAGEMENT.
18. STAGE SIDEWALK WORK SUCH THAT PEDESTRIAN ACCESS IS MAINTAINED ALONG ONE SIDE OF EACH ROADWAY AT ALL TIMES.
19. PROVIDE ADVANCED CONSTRUCTION & SIDEWALK CLOSED/DETOUR SIGNAGE IN ACCORDANCE WITH THE MITC. PROVIDE SMALL CONES IN CENTRE WHERE BARRICADES .GUIDE PEDESTRIANS THROUGH THE CONSTRUCTION ZONE.

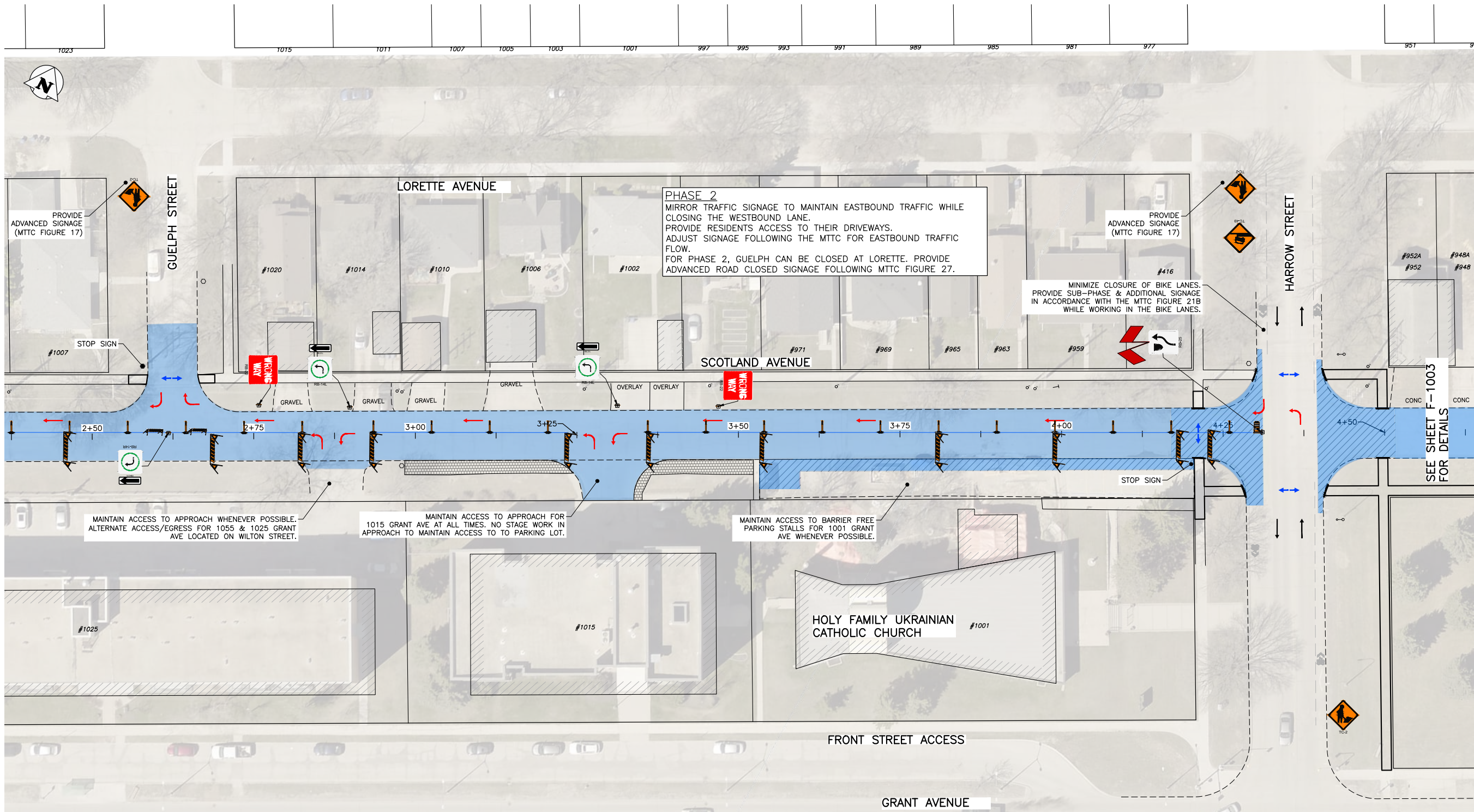
TRAFFIC MANAGEMENT: SCOTLAND MINOR REHAB

1. PERFORM WORK LANE-AT-A-TIME IN TWO PHASES.
 - 1.1. PHASE 1: CLOSE EASTBOUND LANE FROM WILTON TO STAFFORD. PERFORM CONSTRUCTION WORKS ON ROADWAY & INSTALL NEW SIDEWALKS WHILE MAINTAINING WESTBOUND TRAFFIC FLOWS.
 - 1.2. PHASE 2: CLOSE WESTBOUND LANE FROM WILTON TO STAFFORD. PERFORM CONSTRUCTION WORKS ON ROADWAY WHILE MAINTAINING EASTBOUND TRAFFIC FLOWS.
2. MAINTAIN NATURAL TRAFFIC FLOW FOR EACH PHASE.
3. PROVIDE TEMPORARY ACCESS TO PARKING LOTS ON SOUTH SIDE OF SCOTLAND.
4. PROVIDE TEMPORARY ACCESS TO RESIDENTIAL DRIVEWAYS ON NORTH SIDE OF SCOTLAND.
5. SEE MITC FIGURE 27.

TENDER NO. 267-2023

THE CITY OF WINNIPEG PUBLIC WORKS DEPARTMENT ENGINEERING DIVISION			
PROJECT TITLE 2023 LOCAL STREET RENEWALS: MANAHAN AVENUE & VARIOUS OTHER LOCATIONS		SHEET OF 4 OF 15	
PHASING & SIGNAGE PLAN: SCOTLAND STREET: MINOR REHABILITATION SHEET 1		COMPUTER FILE NAME 22-0107-009	
NO. REVISIONS		DATE BY	

Files: C:\Users\mshah\Desktop\FMS\22-0107-009\22-0107-009_C2_267-2023_F-ALL_Signage Figures - Tab-F-1001 Plotted By: GSmalley 23/04/24 [Mon 10:01pm]
 All rights reserved.



PHASE 2
 MIRROR TRAFFIC SIGNAGE TO MAINTAIN EASTBOUND TRAFFIC WHILE CLOSING THE WESTBOUND LANE.
 PROVIDE RESIDENTS ACCESS TO THEIR DRIVEWAYS.
 ADJUST SIGNAGE FOLLOWING THE MITC FOR EASTBOUND TRAFFIC FLOW.
 FOR PHASE 2, GUELPH CAN BE CLOSED AT LORETTE. PROVIDE ADVANCED ROAD CLOSED SIGNAGE FOLLOWING MITC FIGURE 27.

MINIMIZE CLOSURE OF BIKE LANES.
 PROVIDE SUB-PHASE & ADDITIONAL SIGNAGE IN ACCORDANCE WITH THE MITC FIGURE 21B WHILE WORKING IN THE BIKE LANES.

MAINTAIN ACCESS TO APPROACH WHENEVER POSSIBLE. ALTERNATE ACCESS/EGRESS FOR 1055 & 1025 GRANT AVE LOCATED ON WILTON STREET.

MAINTAIN ACCESS TO APPROACH FOR 1015 GRANT AVE AT ALL TIMES. NO STAGE WORK IN APPROACH TO MAINTAIN ACCESS TO TO PARKING LOT.

MAINTAIN ACCESS TO BARRIER FREE PARKING STALLS FOR 1001 GRANT AVE WHENEVER POSSIBLE.

SEE SHEET F-1003 FOR DETAILS

STAGING & SIGNAGE: PHASE 1

SCALE: NTS

GENERAL NOTES:

- ALL TEMPORARY TRAFFIC CONTROL TO BE IN ACCORDANCE WITH THE LATEST MANUAL OF TEMPORARY TRAFFIC CONTROL ON CITY STREETS (MITC) AT TENDER.
- PERFORM WORK IN PHASES & STAGES TO MINIMIZE IMPACT TO TRAFFIC FLOW AND ACCESS TO RESIDENCES.
- NOT ALL REQUIRED SIGNAGE IS SHOWN FOR EACH PHASE & SUB-PHASE. ADDITIONAL SIGNAGE TO PROVIDED IN ACCORDANCE WITH THE MITC.
- THE PERMANENT POSTED SPEED LIMIT OF 50 KM/HR SHALL BE USED FOR ALL TAPER LENGTHS AND OTHER CRITERIA IN THE MITC.
- CONTRACTOR SHALL SUBMIT THE PEDESTRIAN ACCESSIBILITY PLAN FOR REVIEW & ACCEPTANCE BY THE CONTRACT ADMINISTRATOR.
- CONTRACTOR SHALL BE RESPONSIBLE FOR ALL PERMITS, THE SUPPLY, PLACEMENT & MAINTENANCE OF ALL TEMPORARY TRAFFIC CONTROL SIGNAGE IN ACCORDANCE WITH THE TENDER.
- ALL LANE CLOSURE REQUESTS MUST BE SUBMITTED THROUGH THE CONTRACT ADMINISTRATOR & ARE SUBJECT TO THE APPROVAL OF THE TRAFFIC MANAGEMENT BRANCH.
- CONTRACTOR TO PROVIDE FLAGPERSONS IN ACCORDANCE WITH THE MITC WHEN MOVING MATERIALS OR EQUIPMENT INTO OR OUT OF TRAFFIC.
- CONTRACTOR SHALL PROVIDE FLAGPERSONS DURING ALL ASPHALT PLACEMENT AT THE PROJECT LIMITS TO MINIMIZE IMPACT TO TRAFFIC.
- WHEN FLAGPERSONS ARE PRESENT, FLAGPERSON SIGNAGE MUST BE PLACED IN ACCORDANCE WITH THE MITC.

- WHEN FLAGPERSONS ARE NOT PRESENT, THE FLAGPERSON SIGNAGE MUST BE REMOVED OR HIDDEN.
- PROVIDE TEMPORARY RAMPS & CROSSING WHERE DIRECTED BY CONTRACT ADMINISTRATOR & IN ACCORDANCE WITH THE ACCESSIBILITY PLAN FOR PEDESTRIAN CROSSINGS WHILE PERFORMING WORK IN THE INTERSECTIONS AND APPROACHES.
- INSTALL WARNING FLAGS IN ACCORDANCE WITH MITC 3.07.04 ON THE FIRST WARNING SIGN IN EACH LANE DROP TAPER.
- WHERE A LANE IS REQUIRED TO BE CLOSED ON MAJOR INTERSECTING STREETS PERFORM THE WORK ON THE TIE-IN DURING OFF PEAK-HOURS.
- TEMPORARY TRANSIT LANDINGS WILL BE REQUIRED FOR ANY TEMPORARY TRANSIT STOP RELOCATIONS IN ACCORDANCE WITH THE MITC.
- CONTRACTOR TO MONITOR & MAINTAIN THE TEMPORARY SIGNAGE FOR THE DURATION OF THE PROJECT & MODIFY AS NEEDED FOR EACH STAGE OF THE WORKS.
- CONTRACTOR TO REMEDY ANY SIGNAGE DEEMED INSUFFICIENT OR INCORRECT AS DIRECTED BY THE CONTRACT ADMINISTRATOR OR TRAFFIC MANAGEMENT.
- STAGE SIDEWALK WORK SUCH THAT PEDESTRIAN ACCESS IS MAINTAINED ALONG ONE SIDE OF EACH ROADWAY AT ALL TIMES.
- PROVIDE ADVANCED CONSTRUCTION & SIDEWALK CLOSED/DETOUR SIGNAGE IN ACCORDANCE WITH THE MITC. PROVIDE SMALL CONES IN CENTRE WHERE BARRICADES .GUIDE PEDESTRIANS THROUGH THE CONSTRUCTION ZONE.

TRAFFIC MANAGEMENT: SCOTLAND MINOR REHAB

- PERFORM WORK LANE-AT-A-TIME IN TWO PHASES.
 - PHASE 1: CLOSE EASTBOUND LANE FROM WILTON TO STAFFORD. PERFORM CONSTRUCTION WORKS ON ROADWAY & INSTALL NEW SIDEWALKS WHILE MAINTAINING WESTBOUND TRAFFIC FLOWS.
 - PHASE 2: CLOSE WESTBOUND LANE FROM WILTON TO STAFFORD. PERFORM CONSTRUCTION WORKS ON ROADWAY WHILE MAINTAINING EASTBOUND TRAFFIC FLOWS.
- MAINTAIN NATURAL TRAFFIC FLOW FOR EACH PHASE.
- PROVIDE TEMPORARY ACCESS TO PARKING LOTS ON SOUTH SIDE OF SCOTLAND.
- PROVIDE TEMPORARY ACCESS TO RESIDENTIAL DRIVEWAYS ON NORTH SIDE OF SCOTLAND.
- SEE MITC FIGURE 27.

TENDER NO. 267-2023

THE CITY OF WINNIPEG
 PUBLIC WORKS DEPARTMENT
 ENGINEERING DIVISION

KGS GROUP

PROJECT TITLE
 2023 LOCAL STREET RENEWALS: MANAHAN AVENUE & VARIOUS OTHER LOCATIONS

PHASING & SIGNAGE PLAN:
 SCOTLAND AVENUE: MINOR REHABILITATION
 SHEET 2

SHEET 5 OF 15
 COMPUTER FILE NAME: 22-0107-009
 FIGURE: F-1002

- PEDESTRIANS
- TEMPORARY TRAFFIC FLOW

PROPERTY LIMITS DELINEATION

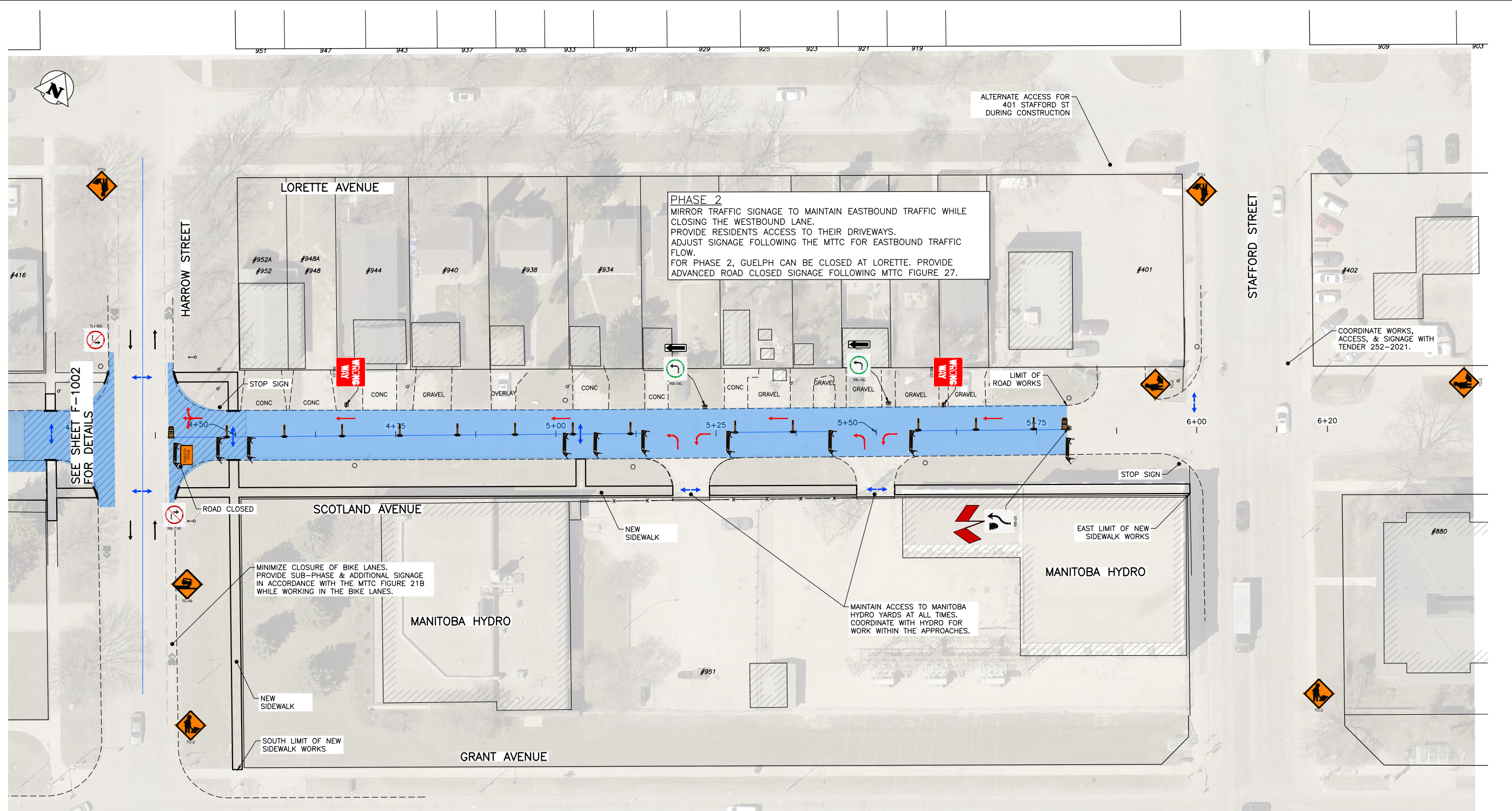
DELINEATION OF PROPERTY LIMITS AS SHOWN ON THIS DWG DOES NOT REPRESENT A "LEGAL SURVEY". KGS GROUP MAKES NO REPRESENTATION OR WARRANTY AS TO THE ACCURACY OF PROPERTY LIMITS DELINEATED ON THIS DWG, NOR ON THE DIMENSIONAL ACCURACY OF DWG FEATURES RELATIVE TO THOSE PROPERTY LIMITS.

METRIC

WHOLE NUMBERS INDICATE MILLIMETRES
 DECIMALIZED NUMBERS INDICATE METRES

NO.	REVISIONS	DATE	BY
A	ISSUED FOR REVIEW	23/04/24	GES

Filepath: C:\Users\smalley\OneDrive\Desktop\FMS\22-0107-009\22-0107-009_C2_267-2023_F-ALL_Signage Figures - TabF-1002 Plotted By: GSmalley 23/04/24 [Mon 10:02pm]
 All rights reserved.



STAGING & SIGNAGE: PHASE 1
SCALE: NTS

- ↔ PEDESTRIANS
- TEMPORARY TRAFFIC FLOW

PROPERTY LIMITS DELINEATION
DELINEATION OF PROPERTY LIMITS AS SHOWN ON THIS DWG DOES NOT REPRESENT A "LEGAL SURVEY". KGS GROUP MAKES NO REPRESENTATION OR WARRANTY AS TO THE ACCURACY OF PROPERTY LIMITS DELINEATED ON THIS DWG, NOR ON THE DIMENSIONAL ACCURACY OF DWG FEATURES RELATIVE TO THOSE PROPERTY LIMITS.

METRIC
WHOLE NUMBERS INDICATE MILLIMETRES
DECIMALIZED NUMBERS INDICATE METRES

GENERAL NOTES:

1. ALL TEMPORARY TRAFFIC CONTROL TO BE IN ACCORDANCE WITH THE LATEST MANUAL OF TEMPORARY TRAFFIC CONTROL ON CITY STREETS (MITC) AT TENDER.
2. PERFORM WORK IN PHASES & STAGES TO MINIMIZE IMPACT TO TRAFFIC FLOW AND ACCESS TO RESIDENCES.
3. NOT ALL REQUIRED SIGNAGE IS SHOWN FOR EACH PHASE & SUB-PHASE. ADDITIONAL SIGNAGE TO PROVIDED IN ACCORDANCE WITH THE MITC.
4. THE PERMANENT POSTED SPEED LIMIT OF 50 KM/HR SHALL BE USED FOR ALL TAPER LENGTHS AND OTHER CRITERIA IN THE MITC.
5. CONTRACTOR SHALL SUBMIT THE PEDESTRIAN ACCESSIBILITY PLAN FOR REVIEW & ACCEPTANCE BY THE CONTRACT ADMINISTRATOR.
6. CONTRACTOR SHALL BE RESPONSIBLE FOR ALL PERMITS, THE SUPPLY, PLACEMENT & MAINTENANCE OF ALL TEMPORARY TRAFFIC CONTROL SIGNAGE IN ACCORDANCE WITH THE TENDER.
7. ALL LANE CLOSURE REQUESTS MUST BE SUBMITTED THROUGH THE CONTRACT ADMINISTRATOR & ARE SUBJECT TO THE APPROVAL OF THE TRAFFIC MANAGEMENT BRANCH.
8. CONTRACTOR TO PROVIDE FLAGPERSONS IN ACCORDANCE WITH THE MITC WHEN MOVING MATERIALS OR EQUIPMENT INTO OR OUT OF TRAFFIC.
9. CONTRACTOR SHALL PROVIDE FLAGPERSONS DURING ALL ASPHALT PLACEMENT AT THE PROJECT LIMITS TO MINIMIZE IMPACT TO TRAFFIC.
10. WHEN FLAGPERSONS ARE PRESENT, FLAGPERSON SIGNAGE MUST BE PLACED IN ACCORDANCE WITH THE MITC.

11. WHEN FLAGPERSONS ARE NOT PRESENT, THE FLAGPERSON SIGNAGE MUST BE REMOVED OR HIDDEN.
12. PROVIDE TEMPORARY RAMPS & CROSSING WHERE DIRECTED BY CONTRACT ADMINISTRATOR & IN ACCORDANCE WITH THE ACCESSIBILITY PLAN FOR PEDESTRIAN CROSSINGS WHILE PERFORMING WORK IN THE INTERSECTIONS AND APPROACHES.
13. INSTALL WARNING FLAGS IN ACCORDANCE WITH MITC 3.07.04 ON THE FIRST WARNING SIGN IN EACH LANE DROP TAPER.
14. WHERE A LANE IS REQUIRED TO BE CLOSED ON MAJOR INTERSECTING STREETS PERFORM THE WORK ON THE TIE-IN DURING OFF PEAK-HOURS.
15. TEMPORARY TRANSIT LANDINGS WILL BE REQUIRED FOR ANY TEMPORARY TRANSIT STOP RELOCATIONS IN ACCORDANCE WITH THE MITC.
16. CONTRACTOR TO MONITOR & MAINTAIN THE TEMPORARY SIGNAGE FOR THE DURATION OF THE PROJECT & MODIFY AS NEEDED FOR EACH STAGE OF THE WORKS.
17. CONTRACTOR TO REMEDY ANY SIGNAGE DEEMED INSUFFICIENT OR INCORRECT AS DIRECTED BY THE CONTRACT ADMINISTRATOR OR TRAFFIC MANAGEMENT.
18. STAGE SIDEWALK WORK SUCH THAT PEDESTRIAN ACCESS IS MAINTAINED ALONG ONE SIDE OF EACH ROADWAY AT ALL TIMES.
19. PROVIDE ADVANCED CONSTRUCTION & SIDEWALK CLOSED/DETOUR SIGNAGE IN ACCORDANCE WITH THE MITC. PROVIDE SMALL CONES IN CENTRE WHERE BARRICADES .GUIDE PEDESTRIANS THROUGH THE CONSTRUCTION ZONE.

TRAFFIC MANAGEMENT: SCOTLAND MINOR REHAB

1. PERFORM WORK LANE-AT-A-TIME IN TWO PHASES.
 - 1.1. PHASE 1: CLOSE EASTBOUND LANE FROM WILTON TO STAFFORD. PERFORM CONSTRUCTION WORKS ON ROADWAY & INSTALL NEW SIDEWALKS WHILE MAINTAINING WESTBOUND TRAFFIC FLOWS.
 - 1.2. PHASE 2: CLOSE WESTBOUND LANE FROM WILTON TO STAFFORD. PERFORM CONSTRUCTION WORKS ON ROADWAY WHILE MAINTAINING EASTBOUND TRAFFIC FLOWS.
2. MAINTAIN NATURAL TRAFFIC FLOW FOR EACH PHASE.
3. PROVIDE TEMPORARY ACCESS TO PARKING LOTS ON SOUTH SIDE OF SCOTLAND.
4. PROVIDE TEMPORARY ACCESS TO RESIDENTIAL DRIVEWAYS ON NORTH SIDE OF SCOTLAND.
5. SEE MITC FIGURE 27.

TENDER NO. 267-2023

THE CITY OF WINNIPEG
PUBLIC WORKS DEPARTMENT
ENGINEERING DIVISION

KGS GROUP

PROJECT TITLE
2023 LOCAL STREET RENEWALS: MANAHAN AVENUE & VARIOUS OTHER LOCATIONS

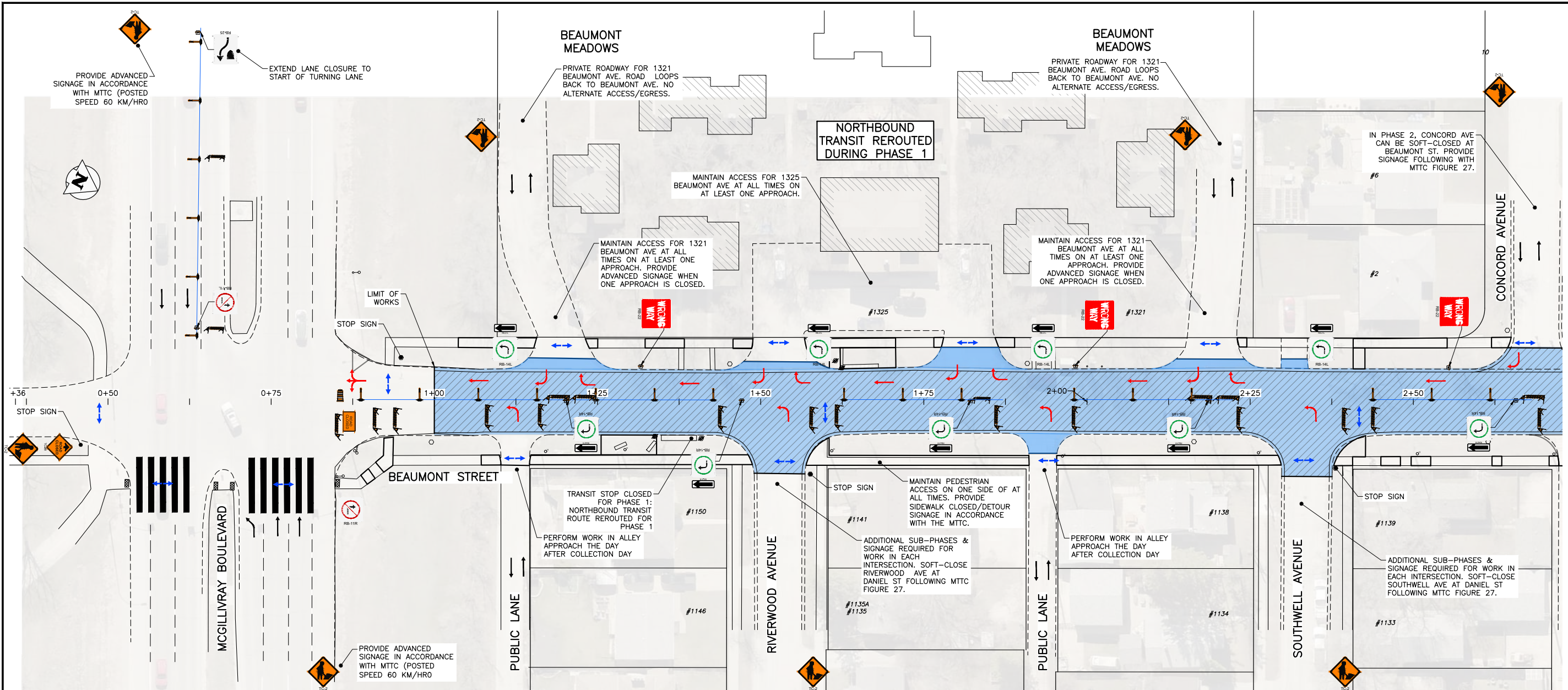
PHASING & SIGNAGE PLAN:
SCOTLAND AVENUE: MAJOR REHABILITATION
SHEET 3

SHEET 6 OF 15
COMPUTER FILE NAME
22-0107-009
FIGURE
F-1003

NO.	REVISIONS	DATE	BY
A	ISSUED FOR REVIEW	23/04/24	GES

Files: C:\Users\jgibson\OneDrive\Desktop\FMS\22-0107-009\22-0107-009_C2_267-2023_F-ALL_Signage Figures - Tab-F-1003 Plotted By: GSmalley 23/04/24 [Mon 10:02pm]
 All rights reserved.

Files: C:\Users\smalley\OneDrive\Desktop\FMS\22-0107-009\22-0107-009_C2_267-2023_F-ALL_Signage Figures - Tab-F-1101 Plotted By: GSmalley 23/04/24 [Mon 10:03pm]



STAGING & SIGNAGE: PHASE 1
SCALE: NTS

← PEDESTRIANS
 → TEMPORARY TRAFFIC FLOW

PROPERTY LIMITS DELINEATION

DELINEATION OF PROPERTY LIMITS AS SHOWN ON THIS DWG DOES NOT REPRESENT A "LEGAL SURVEY". KGS GROUP MAKES NO REPRESENTATION OR WARRANTY AS TO THE ACCURACY OF PROPERTY LIMITS DELINEATED ON THIS DWG, NOR ON THE DIMENSIONAL ACCURACY OF DWG FEATURES RELATIVE TO THOSE PROPERTY LIMITS.

METRIC

WHOLE NUMBERS INDICATE MILLIMETRES
 DECIMALIZED NUMBERS INDICATE METRES

GENERAL NOTES:

- ALL TEMPORARY TRAFFIC CONTROL TO BE IN ACCORDANCE WITH THE LATEST MANUAL OF TEMPORARY TRAFFIC CONTROL ON CITY STREETS (MTTC) AT TENDER.
- PERFORM WORK IN PHASES & STAGES TO MINIMIZE IMPACT TO TRAFFIC FLOW AND ACCESS TO RESIDENCES.
- NOT ALL REQUIRED SIGNAGE IS SHOWN FOR EACH PHASE & SUB-PHASE. ADDITIONAL SIGNAGE TO PROVIDED IN ACCORDANCE WITH THE MTTC.
- THE PERMANENT POSTED SPEED LIMIT OF 50 KM/HR SHALL BE USED FOR ALL TAPER LENGTHS AND OTHER CRITERIA IN THE MTTC.
- CONTRACTOR SHALL SUBMIT THE PEDESTRIAN ACCESSIBILITY PLAN FOR REVIEW & ACCEPTANCE BY THE CONTRACT ADMINISTRATOR.
- CONTRACTOR SHALL BE RESPONSIBLE FOR ALL PERMITS, THE SUPPLY, PLACEMENT & MAINTENANCE OF ALL TEMPORARY TRAFFIC CONTROL SIGNAGE IN ACCORDANCE WITH THE TENDER.
- ALL LANE CLOSURE REQUESTS MUST BE SUBMITTED THROUGH THE CONTRACT ADMINISTRATOR & ARE SUBJECT TO THE APPROVAL OF THE TRAFFIC MANAGEMENT BRANCH.
- CONTRACTOR TO PROVIDE FLAGPERSONS IN ACCORDANCE WITH THE MTTC WHEN MOVING MATERIALS OR EQUIPMENT INTO OR OUT OF TRAFFIC.
- CONTRACTOR SHALL PROVIDE FLAGPERSONS DURING ALL ASPHALT PLACEMENT AT THE PROJECT LIMITS TO MINIMIZE IMPACT TO TRAFFIC.
- WHEN FLAGPERSONS ARE PRESENT, FLAGPERSON SIGNAGE MUST BE PLACED IN ACCORDANCE WITH THE MTTC.

- WHEN FLAGPERSONS ARE NOT PRESENT, THE FLAGPERSON SIGNAGE MUST BE REMOVED OR HIDDEN.
- PROVIDE TEMPORARY RAMPS & CROSSING WHERE DIRECTED BY CONTRACT ADMINISTRATOR & IN ACCORDANCE WITH THE ACCESSIBILITY PLAN FOR PEDESTRIAN CROSSINGS WHILE PERFORMING WORK IN THE INTERSECTIONS AND APPROACHES.
- INSTALL WARNING FLAGS IN ACCORDANCE WITH MTTC 3.07.04 ON THE FIRST WARNING SIGN IN EACH LANE DROP TAPER.
- WHERE A LANE IS REQUIRED TO BE CLOSED ON MAJOR INTERSECTING STREETS PERFORM THE WORK ON THE TIE-IN DURING OFF PEAK-HOURS.
- TEMPORARY TRANSIT LANDINGS WILL BE REQUIRED FOR ANY TEMPORARY TRANSIT STOP RELOCATIONS IN ACCORDANCE WITH THE MTTC.
- CONTRACTOR TO MONITOR & MAINTAIN THE TEMPORARY SIGNAGE FOR THE DURATION OF THE PROJECT & MODIFY AS NEEDED FOR EACH STAGE OF THE WORKS.
- CONTRACTOR TO REMEDY ANY SIGNAGE DEEMED INSUFFICIENT OR INCORRECT AS DIRECTED BY THE CONTRACT ADMINISTRATOR OR TRAFFIC MANAGEMENT.
- STAGE SIDEWALK WORK SUCH THAT PEDESTRIAN ACCESS IS MAINTAINED ALONG ONE SIDE OF EACH ROADWAY AT ALL TIMES.
- PROVIDE ADVANCED CONSTRUCTION & SIDEWALK CLOSED/DETOUR SIGNAGE IN ACCORDANCE WITH THE MTTC. PROVIDE SMALL CONES IN CENTRE WHERE BARRICADES .GUIDE PEDESTRIANS THROUGH THE CONSTRUCTION ZONE.

TRAFFIC CONTROL TO BE MIRRORED FOR PHASE 2 WITH THE FOLLOWING NOTES:
 1. MAINTAIN THE NATURAL NORTHBOUND TRAFFIC FLOW.
 2. ENSURE "LEFT OUT" (NORTHBOUND) IS MAINTAINED ON AT LEAST ONE APPROACH FROM BEAUMONT MEADOWS AT ALL TIMES.
 3. SOUTHBOUND TRANSIT ROUTE WILL BE REROUTED IN PHASE 2.
 4. ENSURE SIGNAGE FOLLOWS THE MTTC.

TRAFFIC MANAGEMENT: BEAUMONT AC REHABILITATION

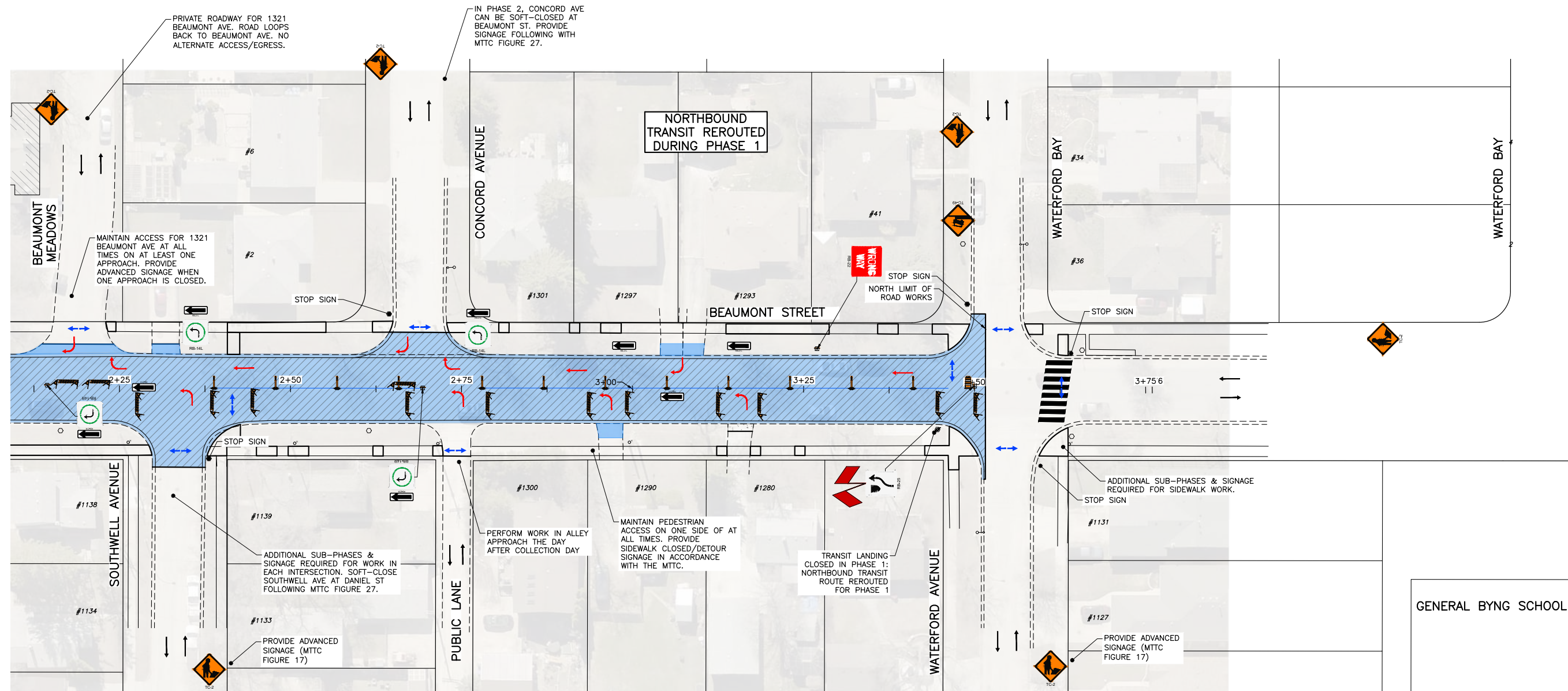
- PERFORM WORK LANE-AT-A-TIME IN STAGES.
- MAINTAIN NATURAL TRAFFIC FLOW FOR EACH PHASE.
- PROVIDE TEMPORARY ACCESS THROUGH CONSTRUCTION ZONE FOR EACH ALLEY & ROADWAY.
- PROVIDE SUB-PHASES FOR EACH INTERSECTION & ADDITIONAL SIGNAGE FOLLOWING THE MTTC.
- PROVIDE TEMPORARY ACCESS TO RESIDENTIAL DRIVEWAYS.
- ENSURE WORK DONE ON SIDEWALK CROSSING IS DONE BEFORE SCHOOL STARTS IN SEPTEMBER.
- SEE MTTC FIGURE 27.

TENDER NO. 267-2023

		SHEET OF 7 OF 15
PROJECT TITLE 2023 LOCAL STREET RENEWALS: MANAHAN AVENUE & VARIOUS OTHER LOCATIONS		COMPUTER FILE NAME 22-0107-009
PHASING & SIGNAGE PLAN: SCOTLAND AVENUE: MAJOR REHABILITATION PHASE 1		FIGURE F-1101

NO.	REVISIONS	DATE	BY
A	ISSUED FOR REVIEW	23/04/24	GES

Files: C:\Users\smalley\OneDrive\Desktop\FMS\22-0107-009\22-0107-009_C2_267-2023_F-ALL_Signage Figures - Tab-F-1102 Plotted By: GSmalley 23/04/24 [Mon 10:03pm]



STAGING & SIGNAGE: PHASE 1
SCALE: NTS

↔ PEDESTRIANS
 → TEMPORARY TRAFFIC FLOW

PROPERTY LIMITS DELINEATION

DELINEATION OF PROPERTY LIMITS AS SHOWN ON THIS DWG DOES NOT REPRESENT A "LEGAL SURVEY". KGS GROUP MAKES NO REPRESENTATION OR WARRANTY AS TO THE ACCURACY OF PROPERTY LIMITS DELINEATED ON THIS DWG, NOR ON THE DIMENSIONAL ACCURACY OF DWG FEATURES RELATIVE TO THOSE PROPERTY LIMITS.

METRIC

WHOLE NUMBERS INDICATE MILLIMETRES
 DECIMALIZED NUMBERS INDICATE METRES

GENERAL NOTES:

1. ALL TEMPORARY TRAFFIC CONTROL TO BE IN ACCORDANCE WITH THE LATEST MANUAL OF TEMPORARY TRAFFIC CONTROL ON CITY STREETS (MTTC) AT TENDER.
2. PERFORM WORK IN PHASES & STAGES TO MINIMIZE IMPACT TO TRAFFIC FLOW AND ACCESS TO RESIDENCES.
3. NOT ALL REQUIRED SIGNAGE IS SHOWN FOR EACH PHASE & SUB-PHASE. ADDITIONAL SIGNAGE TO PROVIDED IN ACCORDANCE WITH THE MTTC.
4. THE PERMANENT POSTED SPEED LIMIT OF 50 KM/HR SHALL BE USED FOR ALL TAPER LENGTHS AND OTHER CRITERIA IN THE MTTC.
5. CONTRACTOR SHALL SUBMIT THE PEDESTRIAN ACCESSIBILITY PLAN FOR REVIEW & ACCEPTANCE BY THE CONTRACT ADMINISTRATOR.
6. CONTRACTOR SHALL BE RESPONSIBLE FOR ALL PERMITS, THE SUPPLY, PLACEMENT & MAINTENANCE OF ALL TEMPORARY TRAFFIC CONTROL SIGNAGE IN ACCORDANCE WITH THE TENDER.
7. ALL LANE CLOSURE REQUESTS MUST BE SUBMITTED THROUGH THE CONTRACT ADMINISTRATOR & ARE SUBJECT TO THE APPROVAL OF THE TRAFFIC MANAGEMENT BRANCH.
8. CONTRACTOR TO PROVIDE FLAGPERSONS IN ACCORDANCE WITH THE MTTC WHEN MOVING MATERIALS OR EQUIPMENT INTO OR OUT OF TRAFFIC.
9. CONTRACTOR SHALL PROVIDE FLAGPERSONS DURING ALL ASPHALT PLACEMENT AT THE PROJECT LIMITS TO MINIMIZE IMPACT TO TRAFFIC.
10. WHEN FLAGPERSONS ARE PRESENT, FLAGPERSON SIGNAGE MUST BE PLACED IN ACCORDANCE WITH THE MTTC.

11. WHEN FLAGPERSONS ARE NOT PRESENT, THE FLAGPERSON SIGNAGE MUST BE REMOVED OR HIDDEN.
12. PROVIDE TEMPORARY RAMPS & CROSSING WHERE DIRECTED BY CONTRACT ADMINISTRATOR & IN ACCORDANCE WITH THE ACCESSIBILITY PLAN FOR PEDESTRIAN CROSSINGS WHILE PERFORMING WORK IN THE INTERSECTIONS AND APPROACHES.
13. INSTALL WARNING FLAGS IN ACCORDANCE WITH MTTC 3.07.04 ON THE FIRST WARNING SIGN IN EACH LANE DROP TAPER.
14. WHERE A LANE IS REQUIRED TO BE CLOSED ON MAJOR INTERSECTING STREETS PERFORM THE WORK ON THE TIE-IN DURING OFF PEAK-HOURS.
15. TEMPORARY TRANSIT LANDINGS WILL BE REQUIRED FOR ANY TEMPORARY TRANSIT STOP RELOCATIONS IN ACCORDANCE WITH THE MTTC.
16. CONTRACTOR TO MONITOR & MAINTAIN THE TEMPORARY SIGNAGE FOR THE DURATION OF THE PROJECT & MODIFY AS NEEDED FOR EACH STAGE OF THE WORKS.
17. CONTRACTOR TO REMEDY ANY SIGNAGE DEEMED INSUFFICIENT OR INCORRECT AS DIRECTED BY THE CONTRACT ADMINISTRATOR OR TRAFFIC MANAGEMENT.
18. STAGE SIDEWALK WORK SUCH THAT PEDESTRIAN ACCESS IS MAINTAINED ALONG ONE SIDE OF EACH ROADWAY AT ALL TIMES.
19. PROVIDE ADVANCED CONSTRUCTION & SIDEWALK CLOSED/DETOUR SIGNAGE IN ACCORDANCE WITH THE MTTC. PROVIDE SMALL CONES IN CENTRE WHERE BARRICADES .GUIDE PEDESTRIANS THROUGH THE CONSTRUCTION ZONE.

TRAFFIC CONTROL TO BE MIRRORED FOR PHASE 2 WITH THE FOLLOWING NOTES:
 1. MAINTAIN THE NATURAL NORTHBOUND TRAFFIC FLOW.
 2. ENSURE 'LEFT OUT' (NORTHBOUND) IS MAINTAINED ON AT LEAST ONE APPROACH FROM BEAUMONT MEADOWS AT ALL TIMES.
 3. SOUTHBOUND TRANSIT ROUTE WILL BE REROUTED IN PHASE 2.
 4. ENSURE SIGNAGE FOLLOWS THE MTTC.

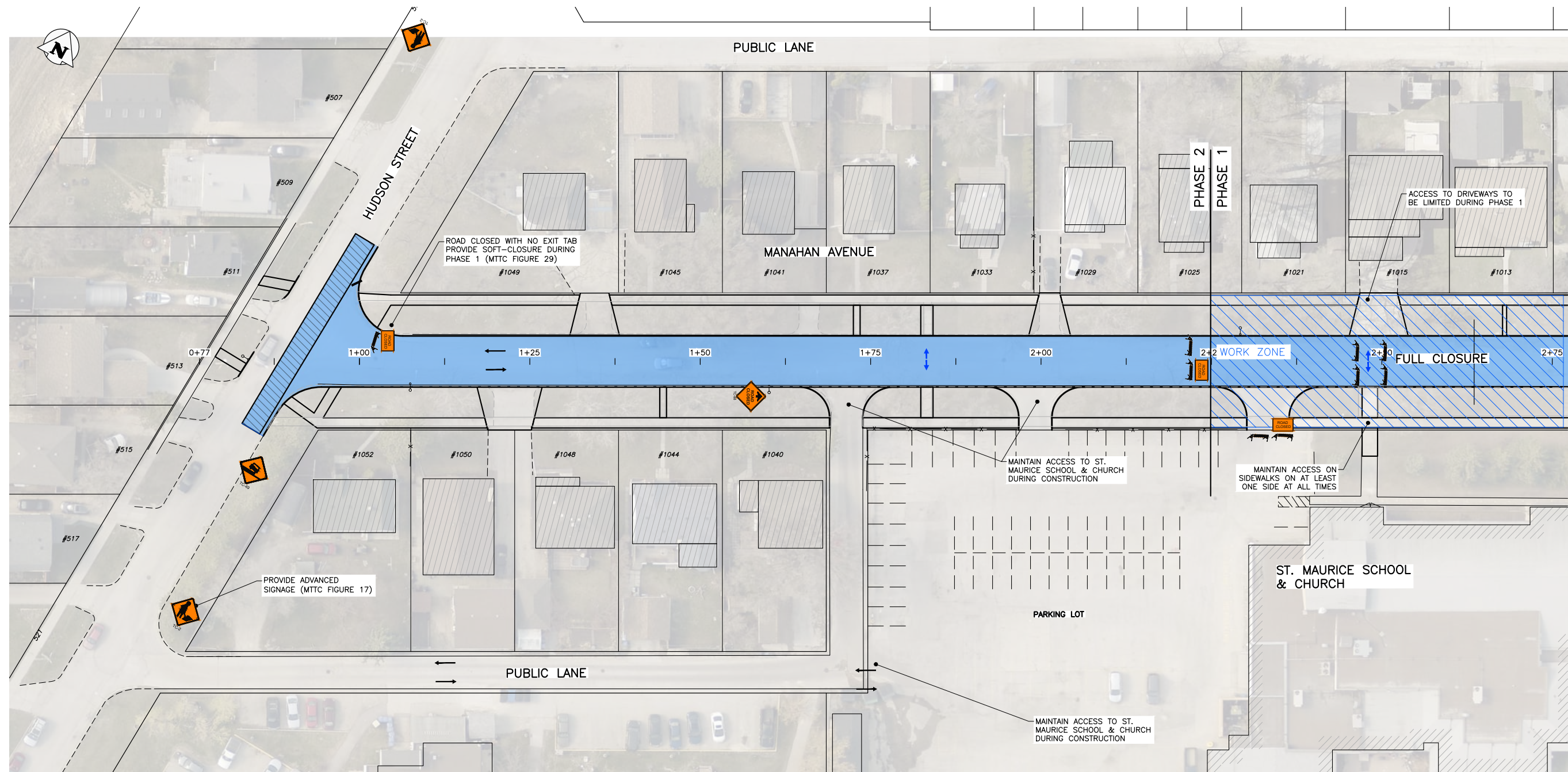
TRAFFIC MANAGEMENT: BEAUMONT AC REHABILITATION

1. PERFORM WORK LANE-AT-A-TIME IN STAGES.
2. MAINTAIN NATURAL TRAFFIC FLOW FOR EACH PHASE.
3. PROVIDE TEMPORARY ACCESS THROUGH CONSTRUCTION ZONE FOR EACH ALLEY & ROADWAY.
4. PROVIDE SUB-PHASES FOR EACH INTERSECTION & ADDITIONAL SIGNAGE FOLLOWING THE MTTC.
5. PROVIDE TEMPORARY ACCESS TO RESIDENTIAL DRIVEWAYS.
6. ENSURE WORK DONE ON SIDEWALK CROSSING IS DONE BEFORE SCHOOL STARTS IN SEPTEMBER.
7. SEE MTTC FIGURE 27.

TENDER NO. 267-2023

		SHEET OF 8 15
PROJECT TITLE 2023 LOCAL STREET RENEWALS: MANAHAN AVENUE & VARIOUS OTHER LOCATIONS		COMPUTER FILE NAME 22-0107-009
PHASING & SIGNAGE PLAN: SCOTLAND AVENUE: MAJOR REHABILITATION PHASE 1		FIGURE F-1102

NO.	REVISIONS	DATE	BY
A	ISSUED FOR REVIEW	23/04/24	GES



STAGING & SIGNAGE: PHASE 1
SCALE: NTS

PEDESTRIANS
 TEMPORARY TRAFFIC FLOW

PROPERTY LIMITS DELINEATION

DELINEATION OF PROPERTY LIMITS AS SHOWN ON THIS DWG DOES NOT REPRESENT A "LEGAL SURVEY". KGS GROUP MAKES NO REPRESENTATION OR WARRANTY AS TO THE ACCURACY OF PROPERTY LIMITS DELINEATED ON THIS DWG, NOR ON THE DIMENSIONAL ACCURACY OF DWG FEATURES RELATIVE TO THOSE PROPERTY LIMITS.

METRIC

WHOLE NUMBERS INDICATE MILLIMETRES
DECIMALIZED NUMBERS INDICATE METRES

GENERAL NOTES:

- ALL TEMPORARY TRAFFIC CONTROL TO BE IN ACCORDANCE WITH THE LATEST MANUAL OF TEMPORARY TRAFFIC CONTROL ON CITY STREETS (MTTC) AT TENDER.
- PERFORM WORK IN PHASES & STAGES TO MINIMIZE IMPACT TO TRAFFIC FLOW AND ACCESS TO RESIDENCES.
- NOT ALL REQUIRED SIGNAGE IS SHOWN FOR EACH PHASE & SUB-PHASE. ADDITIONAL SIGNAGE TO PROVIDED IN ACCORDANCE WITH THE MTTC.
- THE PERMANENT POSTED SPEED LIMIT OF 50 KM/HR SHALL BE USED FOR ALL TAPER LENGTHS AND OTHER CRITERIA IN THE MTTC.
- CONTRACTOR SHALL SUBMIT THE PEDESTRIAN ACCESSIBILITY PLAN FOR REVIEW & ACCEPTANCE BY THE CONTRACT ADMINISTRATOR.
- CONTRACTOR SHALL BE RESPONSIBLE FOR ALL PERMITS, THE SUPPLY, PLACEMENT & MAINTENANCE OF ALL TEMPORARY TRAFFIC CONTROL SIGNAGE IN ACCORDANCE WITH THE TENDER.
- ALL LANE CLOSURE REQUESTS MUST BE SUBMITTED THROUGH THE CONTRACT ADMINISTRATOR & ARE SUBJECT TO THE APPROVAL OF THE TRAFFIC MANAGEMENT BRANCH.
- CONTRACTOR TO PROVIDE FLAGPERSONS IN ACCORDANCE WITH THE MTTC WHEN MOVING MATERIALS OR EQUIPMENT INTO OR OUT OF TRAFFIC.
- CONTRACTOR SHALL PROVIDE FLAGPERSONS DURING ALL ASPHALT PLACEMENT AT THE PROJECT LIMITS TO MINIMIZE IMPACT TO TRAFFIC.
- WHEN FLAGPERSONS ARE PRESENT, FLAGPERSON SIGNAGE MUST BE PLACED IN ACCORDANCE WITH THE MTTC.

- WHEN FLAGPERSONS ARE NOT PRESENT, THE FLAGPERSON SIGNAGE MUST BE REMOVED OR HIDDEN.
- PROVIDE TEMPORARY RAMPS & CROSSING WHERE DIRECTED BY CONTRACT ADMINISTRATOR & IN ACCORDANCE WITH THE ACCESSIBILITY PLAN FOR PEDESTRIAN CROSSINGS WHILE PERFORMING WORK IN THE INTERSECTIONS AND APPROACHES.
- INSTALL WARNING FLAGS IN ACCORDANCE WITH MTTC 3.07.04 ON THE FIRST WARNING SIGN IN EACH LANE DROP TAPER.
- WHERE A LANE IS REQUIRED TO BE CLOSED ON MAJOR INTERSECTING STREETS PERFORM THE WORK ON THE TIE-IN DURING OFF PEAK-HOURS.
- TEMPORARY TRANSIT LANDINGS WILL BE REQUIRED FOR ANY TEMPORARY TRANSIT STOP RELOCATIONS IN ACCORDANCE WITH THE MTTC.
- CONTRACTOR TO MONITOR & MAINTAIN THE TEMPORARY SIGNAGE FOR THE DURATION OF THE PROJECT & MODIFY AS NEEDED FOR EACH STAGE OF THE WORKS.
- CONTRACTOR TO REMEDY ANY SIGNAGE DEEMED INSUFFICIENT OR INCORRECT AS DIRECTED BY THE CONTRACT ADMINISTRATOR OR TRAFFIC MANAGEMENT.
- STAGE SIDEWALK WORK SUCH THAT PEDESTRIAN ACCESS IS MAINTAINED ALONG ONE SIDE OF EACH ROADWAY AT ALL TIMES.
- PROVIDE ADVANCED CONSTRUCTION & SIDEWALK CLOSED/DETOUR SIGNAGE IN ACCORDANCE WITH THE MTTC. PROVIDE SMALL CONES IN CENTRE WHERE BARRICADES .GUIDE PEDESTRIANS THROUGH THE CONSTRUCTION ZONE.

ENSURE PHASE 1 IS COMPLETED PRIOR TO SCHOOL STARTING IN SEPTEMBER.

TRAFFIC MANAGEMENT: MANAHAN AC RECONSTRUCTION

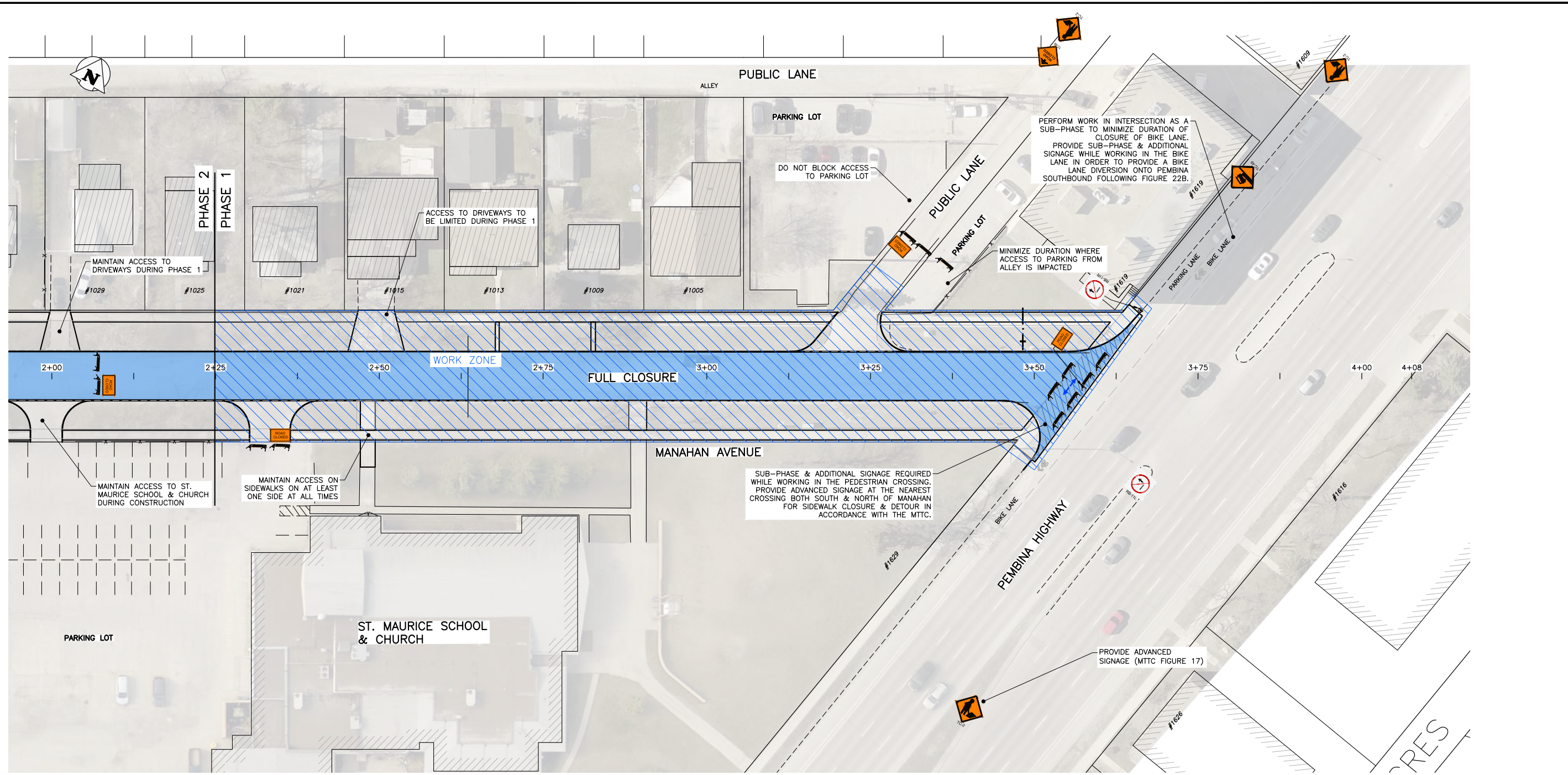
- PERFORM WORK IN TWO PHASES TO MAINTAIN ACCESS TO ST. MAURICE SCHOOL & CHURCH.
- PHASE 1: RECONSTRUCT FROM STA 2+25 TO PEMBINA.
- PHASE 2: RECONSTRUCT FROM HUDSON TO STA 2+25.
- PROVIDE ADDITIONAL SUB-PHASES FOR WORK IN INTERSECTIONS.
- MINIMIZE IMPACT TO TRAFFIC IN INTERSECTIONS BY MINIMIZING DURATION OF INTERSECTION WORKS.
- PROVIDE ADDITIONAL SUB-PHASES & SIGNAGE FOR INTERSECTION WORK.
 - FOR HUDSON INTERSECTION PROVIDE TEMPORARY CLOSURE FOLLOWING FIGURE 28.
 - FOR PEMBINA INTERSECTION PROVIDE TEMPORARY BIKE LANE DETOUR FOLLOWING FIGURE 22B.

TENDER NO. 267-2023

THE CITY OF WINNIPEG PUBLIC WORKS DEPARTMENT ENGINEERING DIVISION			
PROJECT TITLE		SHEET OF	
2023 LOCAL STREET RENEWALS: MANAHAN AVENUE & VARIOUS OTHER LOCATIONS		9 15	
PHASING & SIGNAGE PLAN: MANAHAN AVENUE: AC RECONSTRUCTION PHASE 1 SHEET 1		COMPUTER FILE NAME 22-0107-009	
		FIGURE F-1201	

NO.	REVISIONS	DATE	BY
A	ISSUED FOR REVIEW	23/04/24	GES

Filepath: C:\Users\jgsm\OneDrive\Desktop\FMS\22-0107-009\22-0107-009_C2_267-2023_F-ALL_Signage Figures - Tab-F-1201 Plotted By: GSmalley 23/04/24 [Mon 10:03pm]
 All rights reserved.



STAGING & SIGNAGE: PHASE 1
SCALE: NTS

PEDESTRIANS
 TEMPORARY TRAFFIC FLOW

PROPERTY LIMITS DELINEATION

DELINEATION OF PROPERTY LIMITS AS SHOWN ON THIS DWG DOES NOT REPRESENT A "LEGAL SURVEY". KGS GROUP MAKES NO REPRESENTATION OR WARRANTY AS TO THE ACCURACY OF PROPERTY LIMITS DELINEATED ON THIS DWG, NOR ON THE DIMENSIONAL ACCURACY OF DWG FEATURES RELATIVE TO THOSE PROPERTY LIMITS.

METRIC

WHOLE NUMBERS INDICATE MILLIMETRES
DECIMALIZED NUMBERS INDICATE METRES

GENERAL NOTES:

- ALL TEMPORARY TRAFFIC CONTROL TO BE IN ACCORDANCE WITH THE LATEST MANUAL OF TEMPORARY TRAFFIC CONTROL ON CITY STREETS (MTTC) AT TENDER.
- PERFORM WORK IN PHASES & STAGES TO MINIMIZE IMPACT TO TRAFFIC FLOW AND ACCESS TO RESIDENCES.
- NOT ALL REQUIRED SIGNAGE IS SHOWN FOR EACH PHASE & SUB-PHASE. ADDITIONAL SIGNAGE TO PROVIDED IN ACCORDANCE WITH THE MTTC.
- THE PERMANENT POSTED SPEED LIMIT OF 50 KM/HR SHALL BE USED FOR ALL TAPER LENGTHS AND OTHER CRITERIA IN THE MTTC.
- CONTRACTOR SHALL SUBMIT THE PEDESTRIAN ACCESSIBILITY PLAN FOR REVIEW & ACCEPTANCE BY THE CONTRACT ADMINISTRATOR.
- CONTRACTOR SHALL BE RESPONSIBLE FOR ALL PERMITS, THE SUPPLY, PLACEMENT & MAINTENANCE OF ALL TEMPORARY TRAFFIC CONTROL SIGNAGE IN ACCORDANCE WITH THE TENDER.
- ALL LANE CLOSURE REQUESTS MUST BE SUBMITTED THROUGH THE CONTRACT ADMINISTRATOR & ARE SUBJECT TO THE APPROVAL OF THE TRAFFIC MANAGEMENT BRANCH.
- CONTRACTOR TO PROVIDE FLAGPERSONS IN ACCORDANCE WITH THE MTTC WHEN MOVING MATERIALS OR EQUIPMENT INTO OR OUT OF TRAFFIC.
- CONTRACTOR SHALL PROVIDE FLAGPERSONS DURING ALL ASPHALT PLACEMENT AT THE PROJECT LIMITS TO MINIMIZE IMPACT TO TRAFFIC.
- WHEN FLAGPERSONS ARE PRESENT, FLAGPERSON SIGNAGE MUST BE PLACED IN ACCORDANCE WITH THE MTTC.

- WHEN FLAGPERSONS ARE NOT PRESENT, THE FLAGPERSON SIGNAGE MUST BE REMOVED OR HIDDEN.
- PROVIDE TEMPORARY RAMPS & CROSSING WHERE DIRECTED BY CONTRACT ADMINISTRATOR & IN ACCORDANCE WITH THE ACCESSIBILITY PLAN FOR PEDESTRIAN CROSSINGS WHILE PERFORMING WORK IN THE INTERSECTIONS AND APPROACHES.
- INSTALL WARNING FLAGS IN ACCORDANCE WITH MTTC 3.07.04 ON THE FIRST WARNING SIGN IN EACH LANE DROP TAPER.
- WHERE A LANE IS REQUIRED TO BE CLOSED ON MAJOR INTERSECTING STREETS PERFORM THE WORK ON THE TIE-IN DURING OFF PEAK-HOURS.
- TEMPORARY TRANSIT LANDINGS WILL BE REQUIRED FOR ANY TEMPORARY TRANSIT STOP RELOCATIONS IN ACCORDANCE WITH THE MTTC.
- CONTRACTOR TO MONITOR & MAINTAIN THE TEMPORARY SIGNAGE FOR THE DURATION OF THE PROJECT & MODIFY AS NEEDED FOR EACH STAGE OF THE WORKS.
- CONTRACTOR TO REMEDY ANY SIGNAGE DEEMED INSUFFICIENT OR INCORRECT AS DIRECTED BY THE CONTRACT ADMINISTRATOR OR TRAFFIC MANAGEMENT.
- STAGE SIDEWALK WORK SUCH THAT PEDESTRIAN ACCESS IS MAINTAINED ALONG ONE SIDE OF EACH ROADWAY AT ALL TIMES.
- PROVIDE ADVANCED CONSTRUCTION & SIDEWALK CLOSED/DETOUR SIGNAGE IN ACCORDANCE WITH THE MTTC. PROVIDE SMALL CONES IN CENTRE WHERE BARRICADES .GUIDE PEDESTRIANS THROUGH THE CONSTRUCTION ZONE.

ENSURE PHASE 1 IS COMPLETED PRIOR TO SCHOOL STARTING IN SEPTEMBER.

TRAFFIC MANAGEMENT: MANAHAN AC RECONSTRUCTION

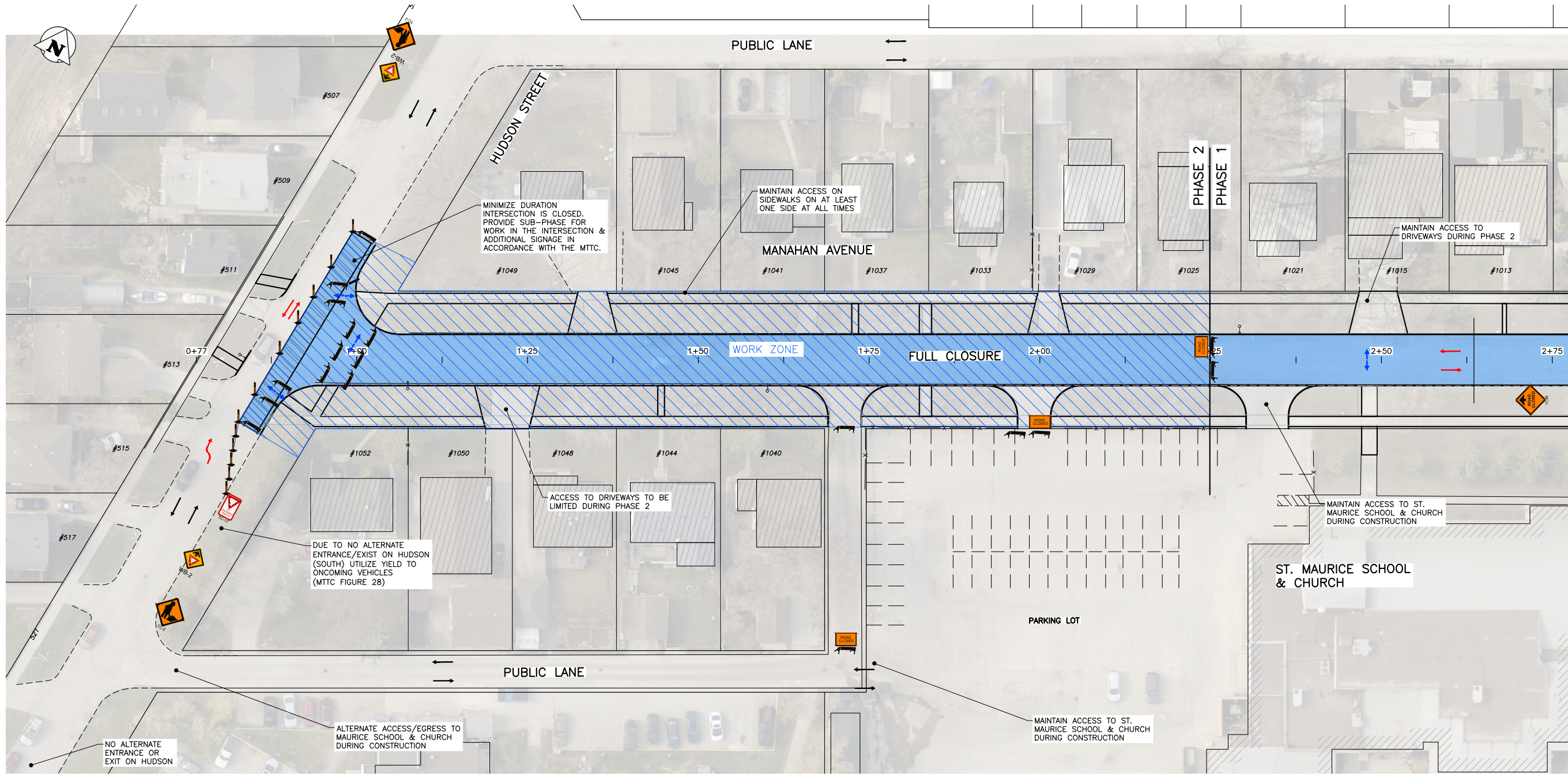
- PERFORM WORK IN TWO PHASES TO MAINTAIN ACCESS TO ST. MAURICE SCHOOL & CHURCH.
- PHASE 1: RECONSTRUCT FROM STA 2+25 TO PEMBINA.
- PHASE 2: RECONSTRUCT FROM HUDSON TO STA 2+25.
- PROVIDE ADDITIONAL SUB-PHASES FOR WORK IN INTERSECTIONS.
- MINIMIZE IMPACT TO TRAFFIC IN INTERSECTIONS BY MINIMIZING DURATION OF INTERSECTION WORKS.
- PROVIDE ADDITIONAL SUB-PHASES & SIGNAGE FOR INTERSECTION WORK.
 - FOR HUDSON INTERSECTION PROVIDE TEMPORARY CLOSURE FOLLOWING FIGURE 28.
 - FOR PEMBINA INTERSECTION PROVIDE TEMPORARY BIKE LANE DETOUR FOLLOWING FIGURE 22B.

TENDER NO. 267-2023

THE CITY OF WINNIPEG PUBLIC WORKS DEPARTMENT ENGINEERING DIVISION			
PROJECT TITLE		SHEET OF	
2023 LOCAL STREET RENEWALS: MANAHAN AVENUE & VARIOUS OTHER LOCATIONS		10 15	
PHASING & SIGNAGE PLAN: MANAHAN AVENUE: AC RECONSTRUCTION PHASE 1 SHEET 2		COMPUTER FILE NAME 22-0107-009	
		FIGURE F-1202	

NO.	REVISIONS	DATE	BY
A	ISSUED FOR REVIEW	23/04/24	GES

Filepath: C:\Users\smalley\Desktop\FMS\22-0107-009\22-0107-009_C2_267-2023_F-ALL_Signage Figures - TabF-1202 Plotted By: GSmalley 23/04/24 [Mon 10:03pm]
 All rights reserved.



STAGING & SIGNAGE: PHASE 2
SCALE: NTS

PEDESTRIANS
 TEMPORARY TRAFFIC FLOW

PROPERTY LIMITS DELINEATION

DELINEATION OF PROPERTY LIMITS AS SHOWN ON THIS DWG DOES NOT REPRESENT A "LEGAL SURVEY". KGS GROUP MAKES NO REPRESENTATION OR WARRANTY AS TO THE ACCURACY OF PROPERTY LIMITS DELINEATED ON THIS DWG, NOR ON THE DIMENSIONAL ACCURACY OF DWG FEATURES RELATIVE TO THOSE PROPERTY LIMITS.

METRIC

WHOLE NUMBERS INDICATE MILLIMETRES
DECIMALIZED NUMBERS INDICATE METRES

GENERAL NOTES:

- ALL TEMPORARY TRAFFIC CONTROL TO BE IN ACCORDANCE WITH THE LATEST MANUAL OF TEMPORARY TRAFFIC CONTROL ON CITY STREETS (MITC) AT TENDER.
- PERFORM WORK IN PHASES & STAGES TO MINIMIZE IMPACT TO TRAFFIC FLOW AND ACCESS TO RESIDENCES.
- NOT ALL REQUIRED SIGNAGE IS SHOWN FOR EACH PHASE & SUB-PHASE. ADDITIONAL SIGNAGE TO PROVIDED IN ACCORDANCE WITH THE MITC.
- THE PERMANENT POSTED SPEED LIMIT OF 50 KM/HR SHALL BE USED FOR ALL TAPER LENGTHS AND OTHER CRITERIA IN THE MITC.
- CONTRACTOR SHALL SUBMIT THE PEDESTRIAN ACCESSIBILITY PLAN FOR REVIEW & ACCEPTANCE BY THE CONTRACT ADMINISTRATOR.
- CONTRACTOR SHALL BE RESPONSIBLE FOR ALL PERMITS, THE SUPPLY, PLACEMENT & MAINTENANCE OF ALL TEMPORARY TRAFFIC CONTROL SIGNAGE IN ACCORDANCE WITH THE TENDER.
- ALL LANE CLOSURE REQUESTS MUST BE SUBMITTED THROUGH THE CONTRACT ADMINISTRATOR & ARE SUBJECT TO THE APPROVAL OF THE TRAFFIC MANAGEMENT BRANCH.
- CONTRACTOR TO PROVIDE FLAGPERSONS IN ACCORDANCE WITH THE MITC WHEN MOVING MATERIALS OR EQUIPMENT INTO OR OUT OF TRAFFIC.
- CONTRACTOR SHALL PROVIDE FLAGPERSONS DURING ALL ASPHALT PLACEMENT AT THE PROJECT LIMITS TO MINIMIZE IMPACT TO TRAFFIC.
- WHEN FLAGPERSONS ARE PRESENT, FLAGPERSON SIGNAGE MUST BE PLACED IN ACCORDANCE WITH THE MITC.

- WHEN FLAGPERSONS ARE NOT PRESENT, THE FLAGPERSON SIGNAGE MUST BE REMOVED OR HIDDEN.
- PROVIDE TEMPORARY RAMPS & CROSSING WHERE DIRECTED BY CONTRACT ADMINISTRATOR & IN ACCORDANCE WITH THE ACCESSIBILITY PLAN FOR PEDESTRIAN CROSSINGS WHILE PERFORMING WORK IN THE INTERSECTIONS AND APPROACHES.
- INSTALL WARNING FLAGS IN ACCORDANCE WITH MITC 3.07.04 ON THE FIRST WARNING SIGN IN EACH LANE DROP TAPER.
- WHERE A LANE IS REQUIRED TO BE CLOSED ON MAJOR INTERSECTING STREETS PERFORM THE WORK ON THE TIE-IN DURING OFF PEAK-HOURS.
- TEMPORARY TRANSIT LANDINGS WILL BE REQUIRED FOR ANY TEMPORARY TRANSIT STOP RELOCATIONS IN ACCORDANCE WITH THE MITC.
- CONTRACTOR TO MONITOR & MAINTAIN THE TEMPORARY SIGNAGE FOR THE DURATION OF THE PROJECT & MODIFY AS NEEDED FOR EACH STAGE OF THE WORKS.
- CONTRACTOR TO REMEDY ANY SIGNAGE DEEMED INSUFFICIENT OR INCORRECT AS DIRECTED BY THE CONTRACT ADMINISTRATOR OR TRAFFIC MANAGEMENT.
- STAGE SIDEWALK WORK SUCH THAT PEDESTRIAN ACCESS IS MAINTAINED ALONG ONE SIDE OF EACH ROADWAY AT ALL TIMES.
- PROVIDE ADVANCED CONSTRUCTION & SIDEWALK CLOSED/DETOUR SIGNAGE IN ACCORDANCE WITH THE MITC. PROVIDE SMALL CONES IN CENTRE WHERE BARRICADES .GUIDE PEDESTRIANS THROUGH THE CONSTRUCTION ZONE.

ENSURE PHASE 1 IS COMPLETED PRIOR TO SCHOOL STARTING IN SEPTEMBER.

TRAFFIC MANAGEMENT: MANAHAN AC RECONSTRUCTION

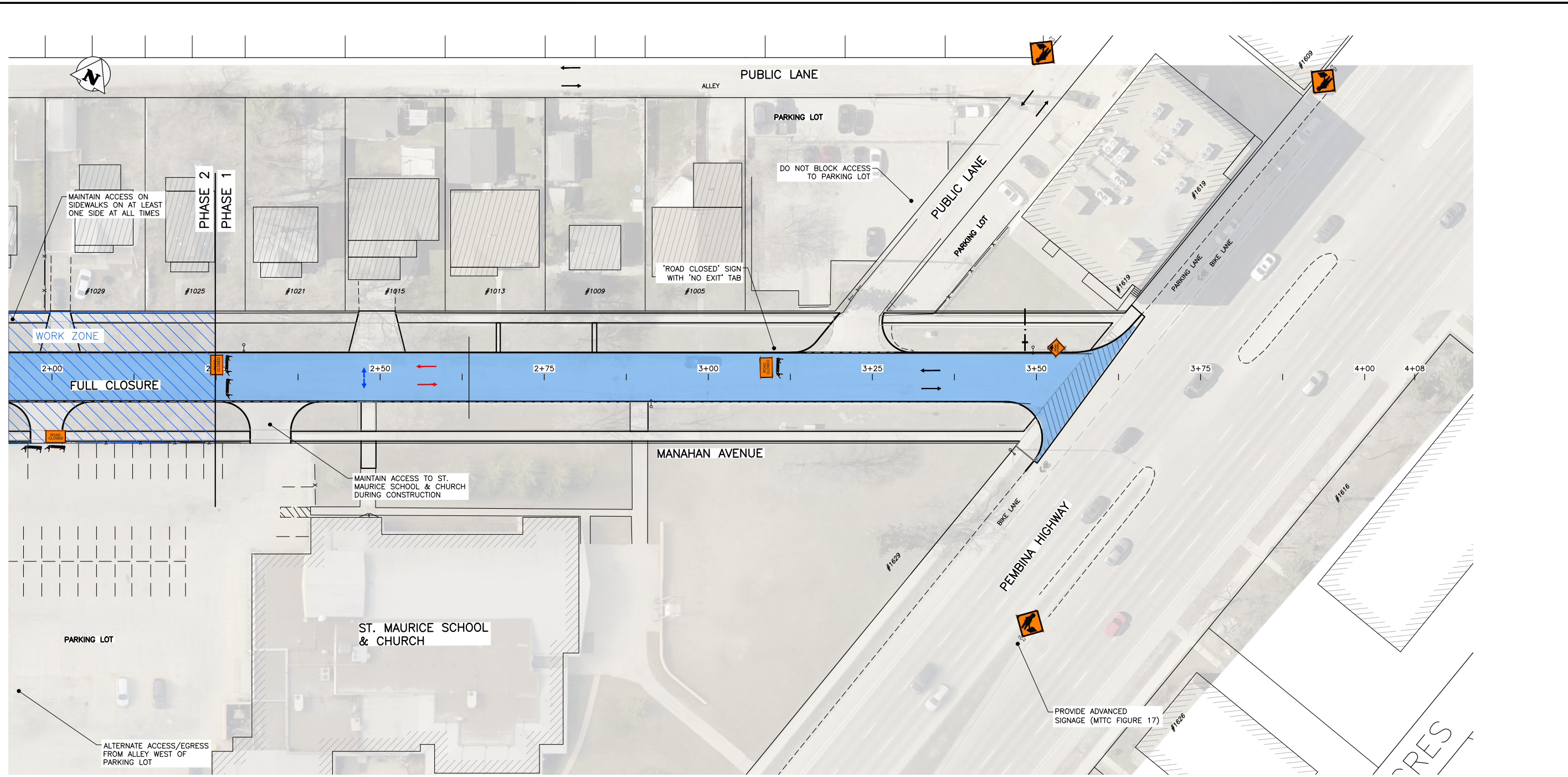
- PERFORM WORK IN TWO PHASES TO MAINTAIN ACCESS TO ST. MAURICE SCHOOL & CHURCH.
- PHASE 1: RECONSTRUCT FROM STA 2+25 TO PEMBINA.
- PHASE 2: RECONSTRUCT FROM HUDSON TO STA 2+25.
- PROVIDE ADDITIONAL SUB-PHASES FOR WORK IN INTERSECTIONS.
- MINIMIZE IMPACT TO TRAFFIC IN INTERSECTIONS BY MINIMIZING DURATION OF INTERSECTION WORKS.
- PROVIDE ADDITIONAL SUB-PHASES & SIGNAGE FOR INTERSECTION WORK.
 - FOR HUDSON INTERSECTION PROVIDE TEMPORARY CLOSURE FOLLOWING FIGURE 28.
 - FOR PEMBINA INTERSECTION PROVIDE TEMPORARY BIKE LANE DETOUR FOLLOWING FIGURE 22B.

TENDER NO. 267-2023

THE CITY OF WINNIPEG PUBLIC WORKS DEPARTMENT ENGINEERING DIVISION			
PROJECT TITLE		SHEET OF	
2023 LOCAL STREET RENEWALS: MANAHAN AVENUE & VARIOUS OTHER LOCATIONS		11 15	
PHASING & SIGNAGE PLAN: MANAHAN AVENUE: AC RECONSTRUCTION PHASE 2 SHEET 1		COMPUTER FILE NAME 22-0107-009	
FIGURE		F-1203	

NO.	REVISIONS	DATE	BY
A	ISSUED FOR REVIEW	23/04/24	GES

Filepath: C:\Users\smalley\OneDrive\Desktop\FMS\22-0107-009\22-0107-009_C2_267-2023_F-ALL_Signage Figures - Tab-F-1203 Plotted By: SSmalley 23/04/24 [Mon 10:04pm]
 All rights reserved.



STAGING & SIGNAGE: PHASE 2
SCALE: NTS

PEDESTRIANS
 TEMPORARY TRAFFIC FLOW

PROPERTY LIMITS DELINEATION

DELINEATION OF PROPERTY LIMITS AS SHOWN ON THIS DWG DOES NOT REPRESENT A "LEGAL SURVEY". KGS GROUP MAKES NO REPRESENTATION OR WARRANTY AS TO THE ACCURACY OF PROPERTY LIMITS DELINEATED ON THIS DWG, NOR ON THE DIMENSIONAL ACCURACY OF DWG FEATURES RELATIVE TO THOSE PROPERTY LIMITS.

METRIC

WHOLE NUMBERS INDICATE MILLIMETRES
DECIMALIZED NUMBERS INDICATE METRES

GENERAL NOTES:

- ALL TEMPORARY TRAFFIC CONTROL TO BE IN ACCORDANCE WITH THE LATEST MANUAL OF TEMPORARY TRAFFIC CONTROL ON CITY STREETS (MTTC) AT TENDER.
- PERFORM WORK IN PHASES & STAGES TO MINIMIZE IMPACT TO TRAFFIC FLOW AND ACCESS TO RESIDENCES.
- NOT ALL REQUIRED SIGNAGE IS SHOWN FOR EACH PHASE & SUB-PHASE. ADDITIONAL SIGNAGE TO PROVIDED IN ACCORDANCE WITH THE MTTC.
- THE PERMANENT POSTED SPEED LIMIT OF 50 KM/HR SHALL BE USED FOR ALL TAPER LENGTHS AND OTHER CRITERIA IN THE MTTC.
- CONTRACTOR SHALL SUBMIT THE PEDESTRIAN ACCESSIBILITY PLAN FOR REVIEW & ACCEPTANCE BY THE CONTRACT ADMINISTRATOR.
- CONTRACTOR SHALL BE RESPONSIBLE FOR ALL PERMITS, THE SUPPLY, PLACEMENT & MAINTENANCE OF ALL TEMPORARY TRAFFIC CONTROL SIGNAGE IN ACCORDANCE WITH THE TENDER.
- ALL LANE CLOSURE REQUESTS MUST BE SUBMITTED THROUGH THE CONTRACT ADMINISTRATOR & ARE SUBJECT TO THE APPROVAL OF THE TRAFFIC MANAGEMENT BRANCH.
- CONTRACTOR TO PROVIDE FLAGPERSONS IN ACCORDANCE WITH THE MTTC WHEN MOVING MATERIALS OR EQUIPMENT INTO OR OUT OF TRAFFIC.
- CONTRACTOR SHALL PROVIDE FLAGPERSONS DURING ALL ASPHALT PLACEMENT AT THE PROJECT LIMITS TO MINIMIZE IMPACT TO TRAFFIC.
- WHEN FLAGPERSONS ARE PRESENT, FLAGPERSON SIGNAGE MUST BE PLACED IN ACCORDANCE WITH THE MTTC.

- WHEN FLAGPERSONS ARE NOT PRESENT, THE FLAGPERSON SIGNAGE MUST BE REMOVED OR HIDDEN.
- PROVIDE TEMPORARY RAMPS & CROSSING WHERE DIRECTED BY CONTRACT ADMINISTRATOR & IN ACCORDANCE WITH THE ACCESSIBILITY PLAN FOR PEDESTRIAN CROSSINGS WHILE PERFORMING WORK IN THE INTERSECTIONS AND APPROACHES.
- INSTALL WARNING FLAGS IN ACCORDANCE WITH MTTC 3.07.04 ON THE FIRST WARNING SIGN IN EACH LANE DROP TAPER.
- WHERE A LANE IS REQUIRED TO BE CLOSED ON MAJOR INTERSECTING STREETS PERFORM THE WORK ON THE TIE-IN DURING OFF PEAK-HOURS.
- TEMPORARY TRANSIT LANDINGS WILL BE REQUIRED FOR ANY TEMPORARY TRANSIT STOP RELOCATIONS IN ACCORDANCE WITH THE MTTC.
- CONTRACTOR TO MONITOR & MAINTAIN THE TEMPORARY SIGNAGE FOR THE DURATION OF THE PROJECT & MODIFY AS NEEDED FOR EACH STAGE OF THE WORKS.
- CONTRACTOR TO REMEDY ANY SIGNAGE DEEMED INSUFFICIENT OR INCORRECT AS DIRECTED BY THE CONTRACT ADMINISTRATOR OR TRAFFIC MANAGEMENT.
- STAGE SIDEWALK WORK SUCH THAT PEDESTRIAN ACCESS IS MAINTAINED ALONG ONE SIDE OF EACH ROADWAY AT ALL TIMES.
- PROVIDE ADVANCED CONSTRUCTION & SIDEWALK CLOSED/DETOUR SIGNAGE IN ACCORDANCE WITH THE MTTC. PROVIDE SMALL CONES IN CENTRE WHERE BARRICADES .GUIDE PEDESTRIANS THROUGH THE CONSTRUCTION ZONE.

ENSURE PHASE 1 IS COMPLETED PRIOR TO SCHOOL STARTING IN SEPTEMBER.

TRAFFIC MANAGEMENT: MANAHAN AC RECONSTRUCTION

- PERFORM WORK IN TWO PHASES TO MAINTAIN ACCESS TO ST. MAURICE SCHOOL & CHURCH.
- PHASE 1: RECONSTRUCT FROM STA 2+25 TO PEMBINA.
- PHASE 2: RECONSTRUCT FROM HUDSON TO STA 2+25.
- PROVIDE ADDITIONAL SUB-PHASES FOR WORK IN INTERSECTIONS.
- MINIMIZE IMPACT TO TRAFFIC IN INTERSECTIONS BY MINIMIZING DURATION OF INTERSECTION WORKS.
- PROVIDE ADDITIONAL SUB-PHASES & SIGNAGE FOR INTERSECTION WORK.
 - FOR HUDSON INTERSECTION PROVIDE TEMPORARY CLOSURE FOLLOWING FIGURE 28.
 - FOR PEMBINA INTERSECTION PROVIDE TEMPORARY BIKE LANE DETOUR FOLLOWING FIGURE 22B.

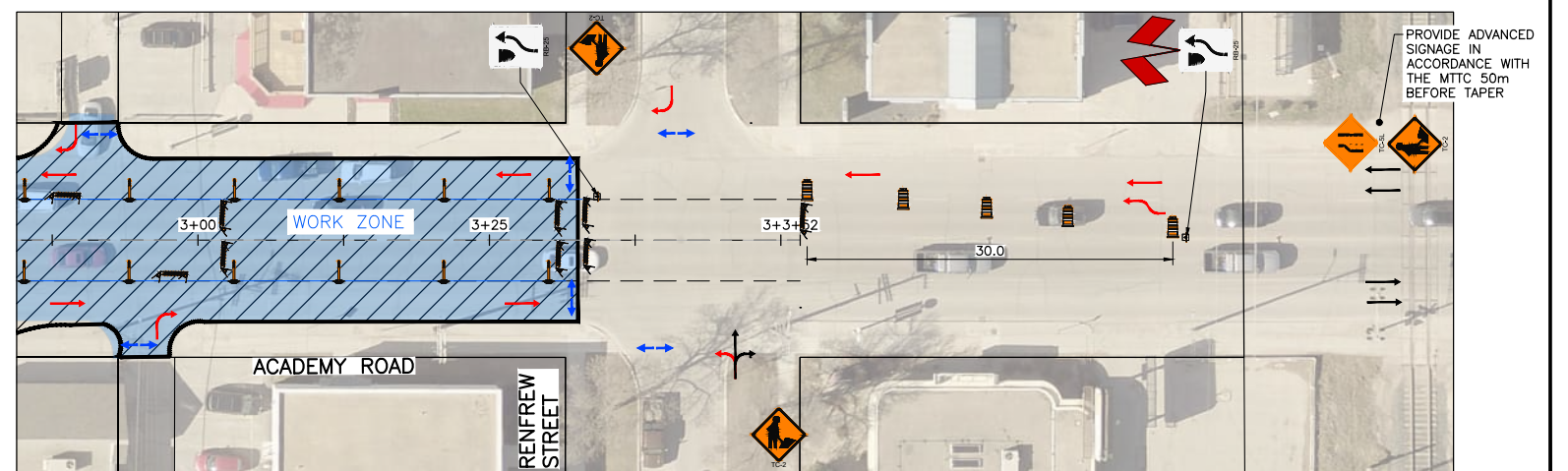
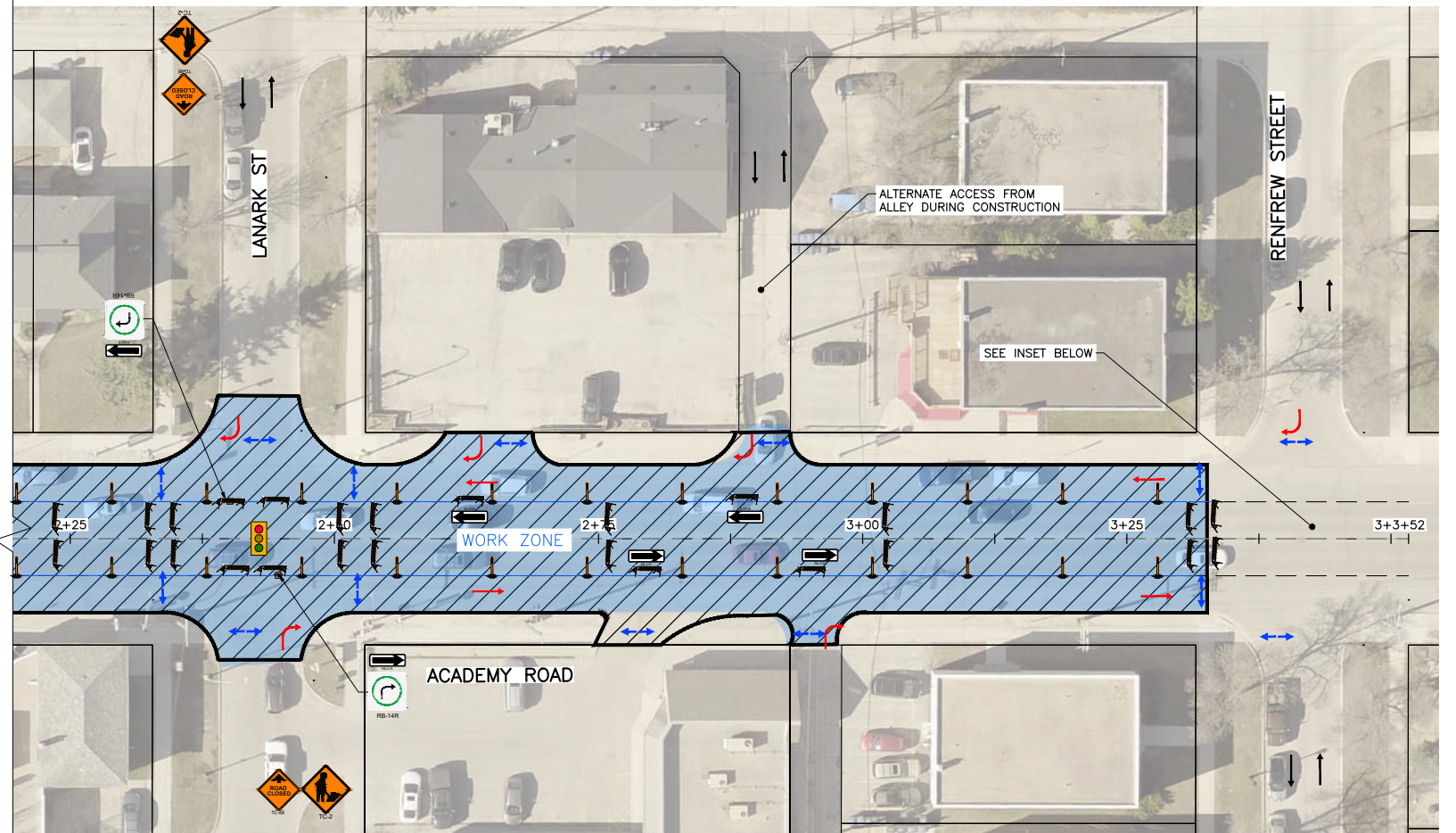
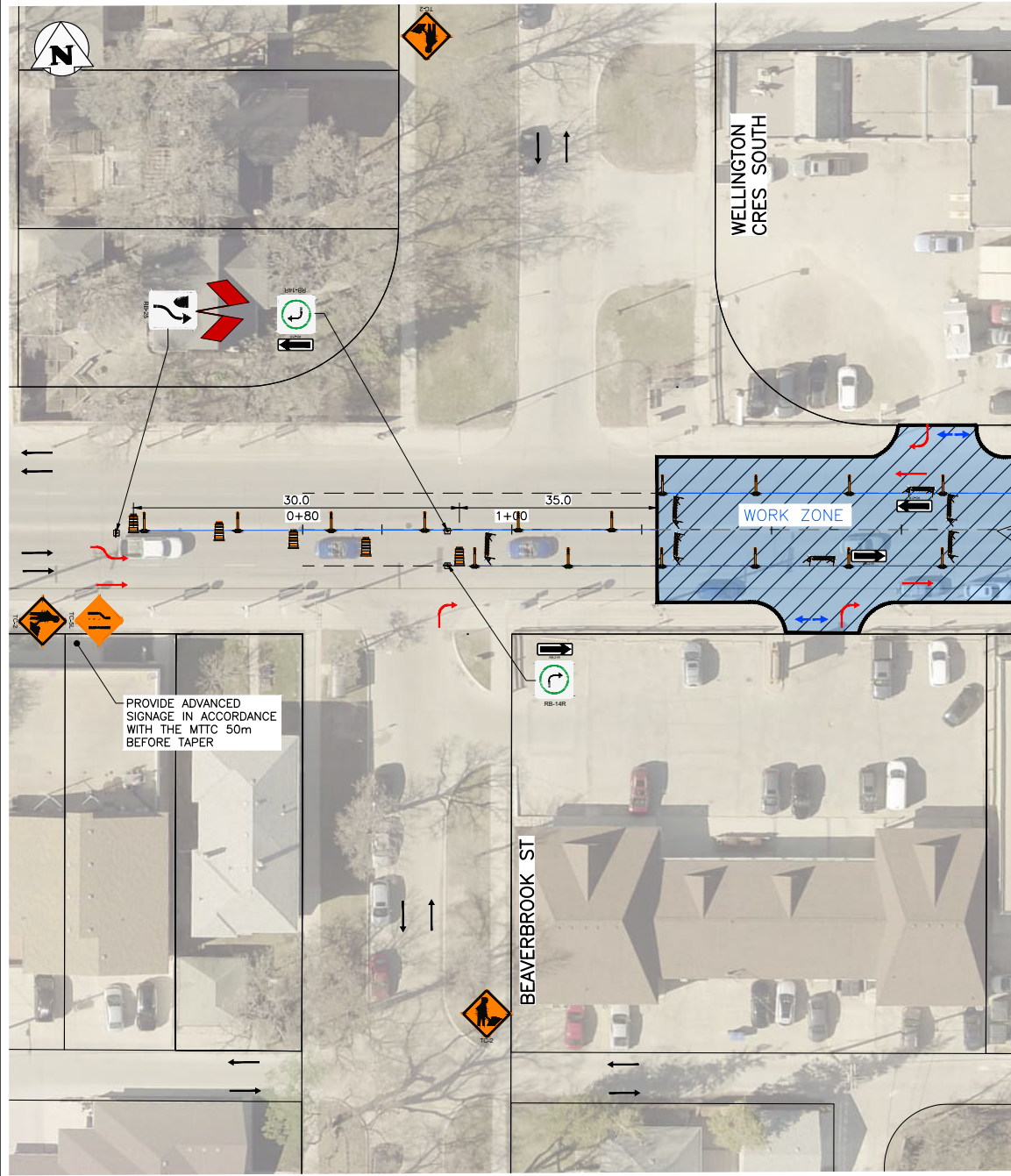
TENDER NO. 267-2023

THE CITY OF WINNIPEG PUBLIC WORKS DEPARTMENT ENGINEERING DIVISION			
PROJECT TITLE		SHEET OF	
2023 LOCAL STREET RENEWALS: MANAHAN AVENUE & VARIOUS OTHER LOCATIONS		12 15	
PHASING & SIGNAGE PLAN: MANAHAN AVENUE: AC RECONSTRUCTION PHASE 2 SHEET 2		COMPUTER FILE NAME 22-0107-009	
		FIGURE F-1204	

NO.	REVISIONS	DATE	BY
A	ISSUED FOR REVIEW	23/04/24	GES

Files: C:\Users\smalley\Desktop\FMS\22-0107-009\22-0107-009_C2_267-2023_F-ALL_Signage Figures - Tab F-1204 Plotted By: GSmalley 23/04/24 [Mon 10:04pm]

Files: C:\Users\smalley\OneDrive\Desktop\FMS\22-0107-009\22-0107-009_C2_267-2023_F-ALL_Signage Figures - Tab-F-1301 Plotted By: GSmalley 23/04/24 [Mon 10:04pm]
 All (8/1/2024) / Plot Scale: 1:1



STAGING & SIGNAGE: PHASE 1

SCALE: NTS

- ↔ PEDESTRIANS
- TEMPORARY TRAFFIC FLOW

PROPERTY LIMITS DELINEATION

DELINEATION OF PROPERTY LIMITS AS SHOWN ON THIS DWG DOES NOT REPRESENT A "LEGAL SURVEY". KGS GROUP MAKES NO REPRESENTATION OR WARRANTY AS TO THE ACCURACY OF PROPERTY LIMITS DELINEATED ON THIS DWG, NOR ON THE DIMENSIONAL ACCURACY OF DWG FEATURES RELATIVE TO THOSE PROPERTY LIMITS.

METRIC

WHOLE NUMBERS INDICATE MILLIMETRES
DECIMALIZED NUMBERS INDICATE METRES

GENERAL NOTES:

1. ALL TEMPORARY TRAFFIC CONTROL TO BE IN ACCORDANCE WITH THE LATEST MANUAL OF TEMPORARY TRAFFIC CONTROL ON CITY STREETS (MITC) AT TENDER.
2. PERFORM WORK IN PHASES & STAGES TO MINIMIZE IMPACT TO TRAFFIC FLOW AND ACCESS TO RESIDENCES.
3. NOT ALL REQUIRED SIGNAGE IS SHOWN FOR EACH PHASE & SUB-PHASE. ADDITIONAL SIGNAGE TO PROVIDED IN ACCORDANCE WITH THE MITC.
4. THE PERMANENT POSTED SPEED LIMIT OF 50 KM/HR SHALL BE USED FOR ALL TAPER LENGTHS AND OTHER CRITERIA IN THE MITC.
5. CONTRACTOR SHALL SUBMIT THE PEDESTRIAN ACCESSIBILITY PLAN FOR REVIEW & ACCEPTANCE BY THE CONTRACT ADMINISTRATOR.
6. CONTRACTOR SHALL BE RESPONSIBLE FOR ALL PERMITS, THE SUPPLY, PLACEMENT & MAINTENANCE OF ALL TEMPORARY TRAFFIC CONTROL SIGNAGE IN ACCORDANCE WITH THE TENDER.
7. ALL LANE CLOSURE REQUESTS MUST BE SUBMITTED THROUGH THE CONTRACT ADMINISTRATOR & ARE SUBJECT TO THE APPROVAL OF THE TRAFFIC MANAGEMENT BRANCH.
8. CONTRACTOR TO PROVIDE FLAGPERSONS IN ACCORDANCE WITH THE MITC WHEN MOVING MATERIALS OR EQUIPMENT INTO OR OUT OF TRAFFIC.
9. CONTRACTOR SHALL PROVIDE FLAGPERSONS DURING ALL ASPHALT PLACEMENT AT THE PROJECT LIMITS TO MINIMIZE IMPACT TO TRAFFIC.
10. WHEN FLAGPERSONS ARE PRESENT, FLAGPERSON SIGNAGE MUST BE PLACED IN ACCORDANCE WITH THE MITC.

11. WHEN FLAGPERSONS ARE NOT PRESENT, THE FLAGPERSON SIGNAGE MUST BE REMOVED OR HIDDEN.
12. PROVIDE TEMPORARY RAMPS & CROSSING WHERE DIRECTED BY CONTRACT ADMINISTRATOR & IN ACCORDANCE WITH THE ACCESSIBILITY PLAN FOR PEDESTRIAN CROSSINGS WHILE PERFORMING WORK IN THE INTERSECTIONS AND APPROACHES.
13. INSTALL WARNING FLAGS IN ACCORDANCE WITH MITC 3.07.04 ON THE FIRST WARNING SIGN IN EACH LANE DROP TAPER.
14. WHERE A LANE IS REQUIRED TO BE CLOSED ON MAJOR INTERSECTING STREETS PERFORM THE WORK ON THE TIE-IN DURING OFF PEAK-HOURS.
15. TEMPORARY TRANSIT LANDINGS WILL BE REQUIRED FOR ANY TEMPORARY TRANSIT STOP RELOCATIONS IN ACCORDANCE WITH THE MITC.
16. CONTRACTOR TO MONITOR & MAINTAIN THE TEMPORARY SIGNAGE FOR THE DURATION OF THE PROJECT & MODIFY AS NEEDED FOR EACH STAGE OF THE WORKS.
17. CONTRACTOR TO REMEDY ANY SIGNAGE DEEMED INSUFFICIENT OR INCORRECT AS DIRECTED BY THE CONTRACT ADMINISTRATOR OR TRAFFIC MANAGEMENT.
18. STAGE SIDEWALK WORK SUCH THAT PEDESTRIAN ACCESS IS MAINTAINED ALONG ONE SIDE OF EACH ROADWAY AT ALL TIMES.
19. PROVIDE ADVANCED CONSTRUCTION & SIDEWALK CLOSED/DETOUR SIGNAGE IN ACCORDANCE WITH THE MITC. PROVIDE SMALL CONES IN CENTRE WHERE BARRICADES .GUIDE PEDESTRIANS THROUGH THE CONSTRUCTION ZONE.

TRAFFIC MANAGEMENT: ACADEMY ROAD MILL & FILL

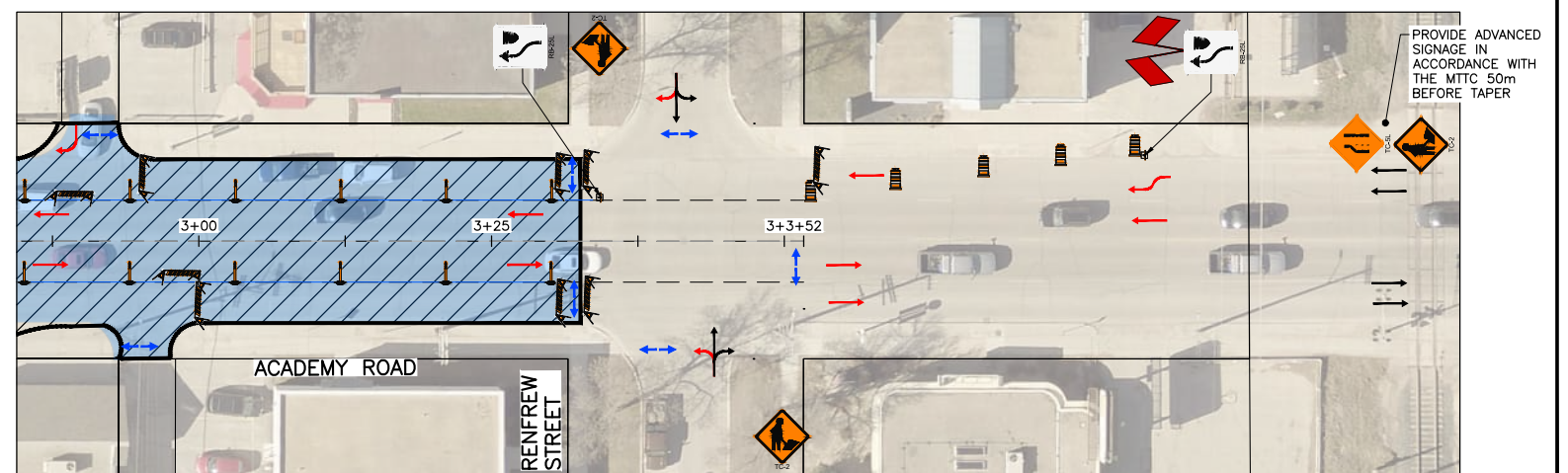
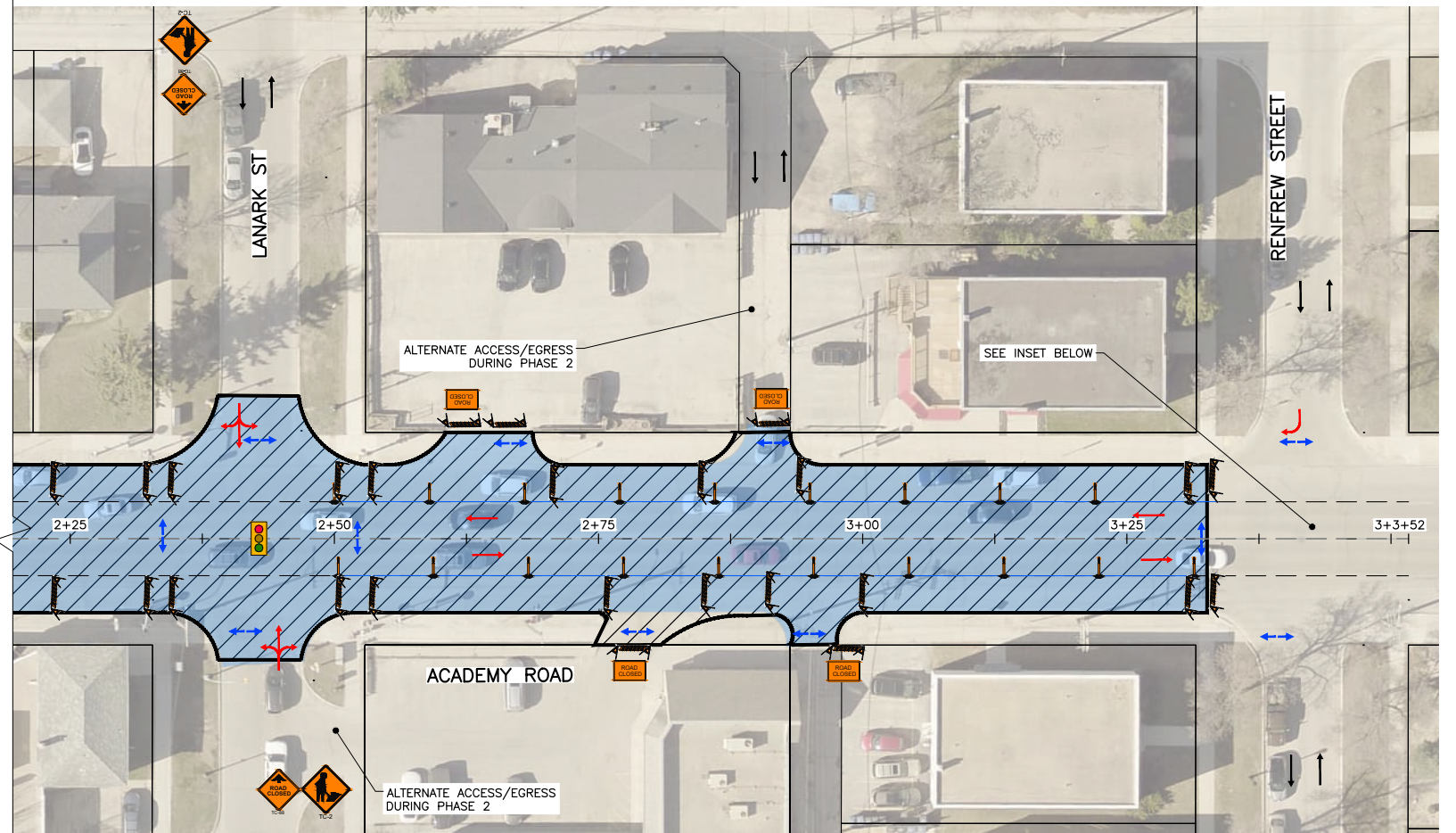
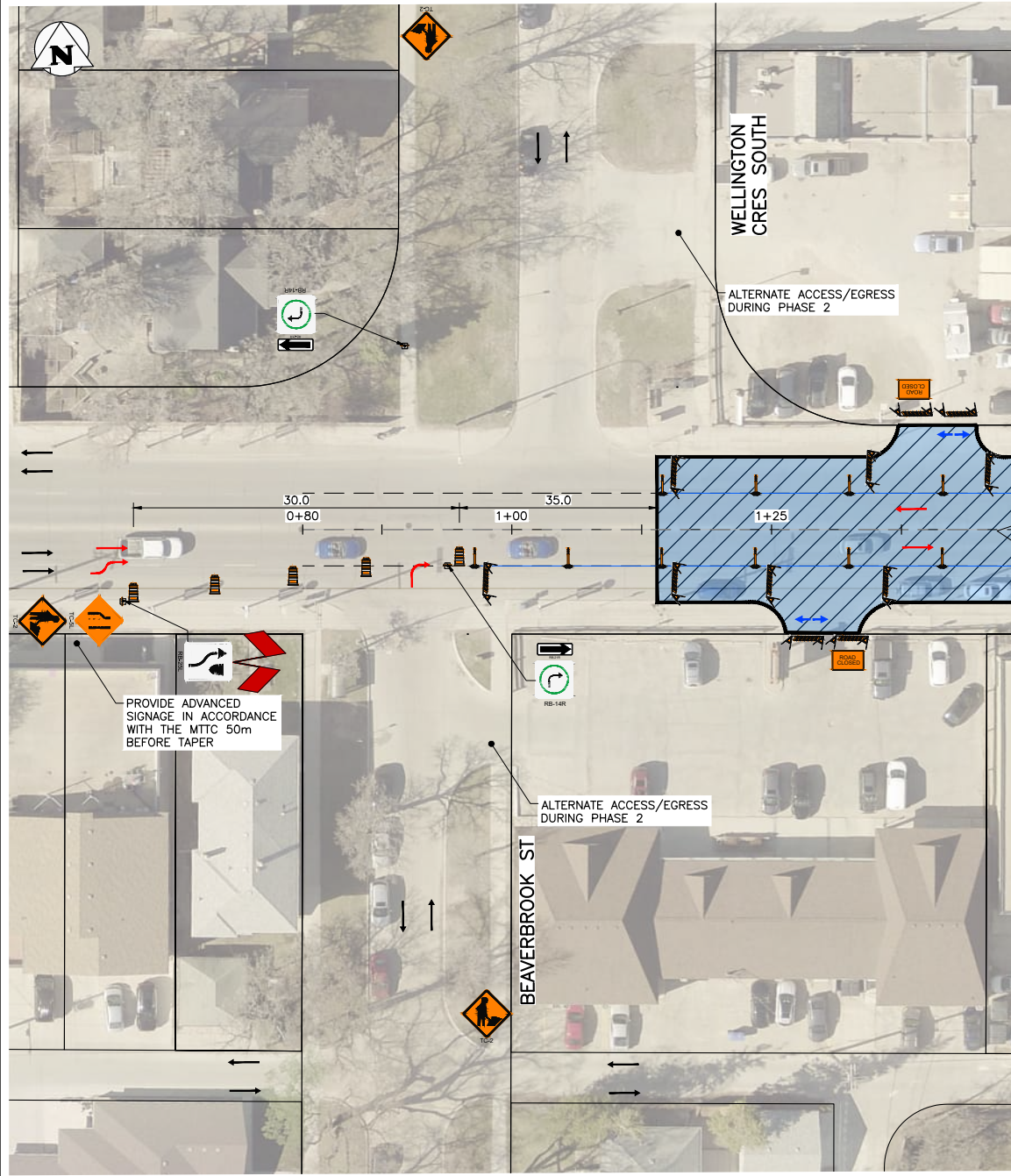
1. PERFORM WORK IN TWO PHASES, LANE-AT-A-TIME.
 - 1.1. PHASE 1: MILL & FILL THE MIDDLE EASTBOUND & WESTBOUND LANES WHILE MAINTAINING TRAFFIC FLOW IN THE REMAINING LANES.
 - 1.2. PHASE 2: MILL & FILL THE EASTBOUND & WESTBOUND CURB LANES WHILE MAINTAINING TRAFFIC FLOW IN THE REMAINING LANES
2. SEE MITC FIGURE 1A & 13.

TENDER NO. 267-2023

THE CITY OF WINNIPEG PUBLIC WORKS DEPARTMENT ENGINEERING DIVISION		SHEET OF
		13 15
PROJECT TITLE 2023 LOCAL STREET RENEWALS: MANAHAN AVENUE & VARIOUS OTHER LOCATIONS		COMPUTER FILE NAME
PHASING & SIGNAGE PLAN: ACADEMY ROAD: MILL & FILL PHASE 1		FIGURE
		F-1301

NO.	REVISIONS	DATE	BY
A	ISSUED FOR REVIEW	23/04/24	GES

Files: C:\Users\smalley\OneDrive\Desktop\FMS\22-0107-009\22-0107-009_C2_267-2023_F-ALL_Signage Figures - Tab-F-1302 Plotted By: GSmalley 23/04/24 [Mon 10:04pm]
 All (8/1/2024) / Plot Scale: 1:1



STAGING & SIGNAGE: PHASE 2

SCALE: NTS

- ↔ PEDESTRIANS
- TEMPORARY TRAFFIC FLOW

PROPERTY LIMITS DELINEATION

DELINEATION OF PROPERTY LIMITS AS SHOWN ON THIS DWG DOES NOT REPRESENT A "LEGAL SURVEY". KGS GROUP MAKES NO REPRESENTATION OR WARRANTY AS TO THE ACCURACY OF PROPERTY LIMITS DELINEATED ON THIS DWG, NOR ON THE DIMENSIONAL ACCURACY OF DWG FEATURES RELATIVE TO THOSE PROPERTY LIMITS.

METRIC

WHOLE NUMBERS INDICATE MILLIMETRES
DECIMALIZED NUMBERS INDICATE METRES

GENERAL NOTES:

1. ALL TEMPORARY TRAFFIC CONTROL TO BE IN ACCORDANCE WITH THE LATEST MANUAL OF TEMPORARY TRAFFIC CONTROL ON CITY STREETS (MTTC) AT TENDER.
2. PERFORM WORK IN PHASES & STAGES TO MINIMIZE IMPACT TO TRAFFIC FLOW AND ACCESS TO RESIDENCES.
3. NOT ALL REQUIRED SIGNAGE IS SHOWN FOR EACH PHASE & SUB-PHASE. ADDITIONAL SIGNAGE TO PROVIDED IN ACCORDANCE WITH THE MTTC.
4. THE PERMANENT POSTED SPEED LIMIT OF 50 KM/HR SHALL BE USED FOR ALL TAPER LENGTHS AND OTHER CRITERIA IN THE MTTC.
5. CONTRACTOR SHALL SUBMIT THE PEDESTRIAN ACCESSIBILITY PLAN FOR REVIEW & ACCEPTANCE BY THE CONTRACT ADMINISTRATOR.
6. CONTRACTOR SHALL BE RESPONSIBLE FOR ALL PERMITS, THE SUPPLY, PLACEMENT & MAINTENANCE OF ALL TEMPORARY TRAFFIC CONTROL SIGNAGE IN ACCORDANCE WITH THE TENDER.
7. ALL LANE CLOSURE REQUESTS MUST BE SUBMITTED THROUGH THE CONTRACT ADMINISTRATOR & ARE SUBJECT TO THE APPROVAL OF THE TRAFFIC MANAGEMENT BRANCH.
8. CONTRACTOR TO PROVIDE FLAGPERSONS IN ACCORDANCE WITH THE MTTC WHEN MOVING MATERIALS OR EQUIPMENT INTO OR OUT OF TRAFFIC.
9. CONTRACTOR SHALL PROVIDE FLAGPERSONS DURING ALL ASPHALT PLACEMENT AT THE PROJECT LIMITS TO MINIMIZE IMPACT TO TRAFFIC.
10. WHEN FLAGPERSONS ARE PRESENT, FLAGPERSON SIGNAGE MUST BE PLACED IN ACCORDANCE WITH THE MTTC.

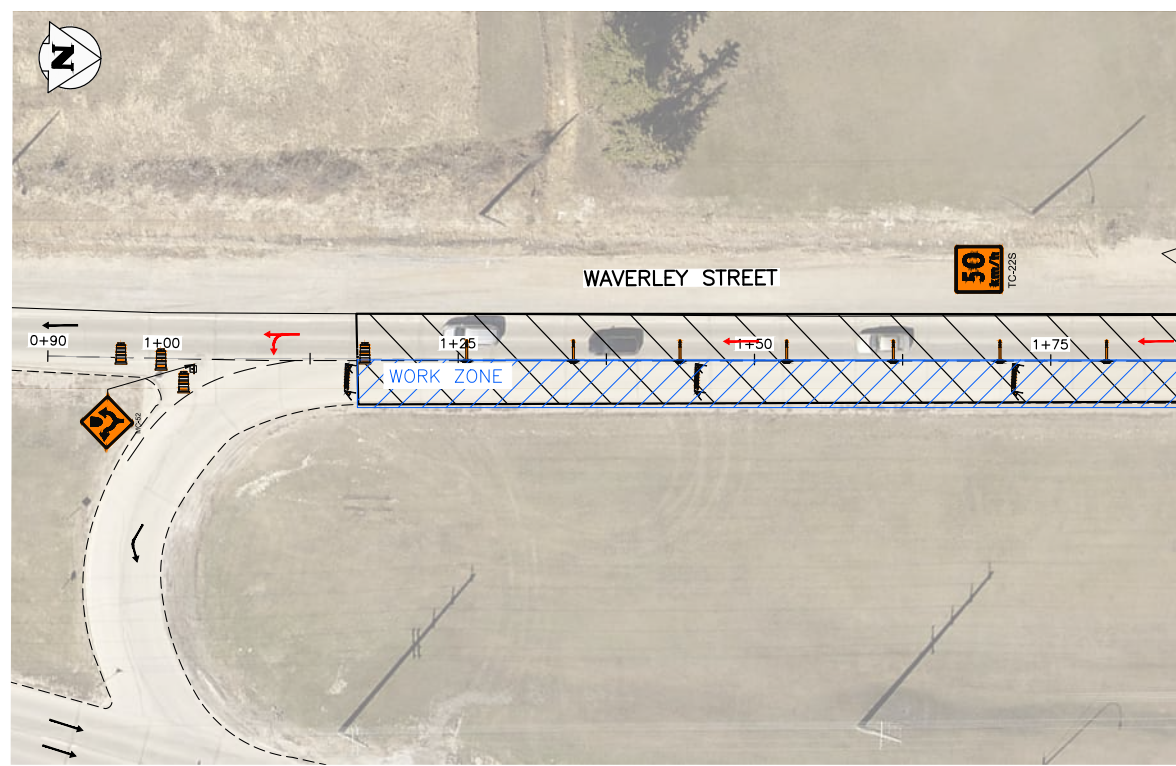
11. WHEN FLAGPERSONS ARE NOT PRESENT, THE FLAGPERSON SIGNAGE MUST BE REMOVED OR HIDDEN.
12. PROVIDE TEMPORARY RAMPS & CROSSING WHERE DIRECTED BY CONTRACT ADMINISTRATOR & IN ACCORDANCE WITH THE ACCESSIBILITY PLAN FOR PEDESTRIAN CROSSINGS WHILE PERFORMING WORK IN THE INTERSECTIONS AND APPROACHES.
13. INSTALL WARNING FLAGS IN ACCORDANCE WITH MTTC 3.07.04 ON THE FIRST WARNING SIGN IN EACH LANE DROP TAPER.
14. WHERE A LANE IS REQUIRED TO BE CLOSED ON MAJOR INTERSECTING STREETS PERFORM THE WORK ON THE TIE-IN DURING OFF PEAK-HOURS.
15. TEMPORARY TRANSIT LANDINGS WILL BE REQUIRED FOR ANY TEMPORARY TRANSIT STOP RELOCATIONS IN ACCORDANCE WITH THE MTTC.
16. CONTRACTOR TO MONITOR & MAINTAIN THE TEMPORARY SIGNAGE FOR THE DURATION OF THE PROJECT & MODIFY AS NEEDED FOR EACH STAGE OF THE WORKS.
17. CONTRACTOR TO REMEDY ANY SIGNAGE DEEMED INSUFFICIENT OR INCORRECT AS DIRECTED BY THE CONTRACT ADMINISTRATOR OR TRAFFIC MANAGEMENT.
18. STAGE SIDEWALK WORK SUCH THAT PEDESTRIAN ACCESS IS MAINTAINED ALONG ONE SIDE OF EACH ROADWAY AT ALL TIMES.
19. PROVIDE ADVANCED CONSTRUCTION & SIDEWALK CLOSED/DETOUR SIGNAGE IN ACCORDANCE WITH THE MTTC. PROVIDE SMALL CONES IN CENTRE WHERE BARRICADES .GUIDE PEDESTRIANS THROUGH THE CONSTRUCTION ZONE.

TRAFFIC MANAGEMENT: ACADEMY ROAD MILL & FILL
 1. PERFORM WORK IN TWO PHASES, LANE-AT-A-TIME.
 1.1. PHASE 1: MILL & FILL THE MIDDLE EASTBOUND & WESTBOUND LANES WHILE MAINTAINING TRAFFIC FLOW IN THE REMAINING LANES.
 1.2. PHASE 2: MILL & FILL THE EASTBOUND & WESTBOUND CURB LANES WHILE MAINTAINING TRAFFIC FLOW IN THE REMAINING LANES
 2. SEE MTTC FIGURE 1A & 13.

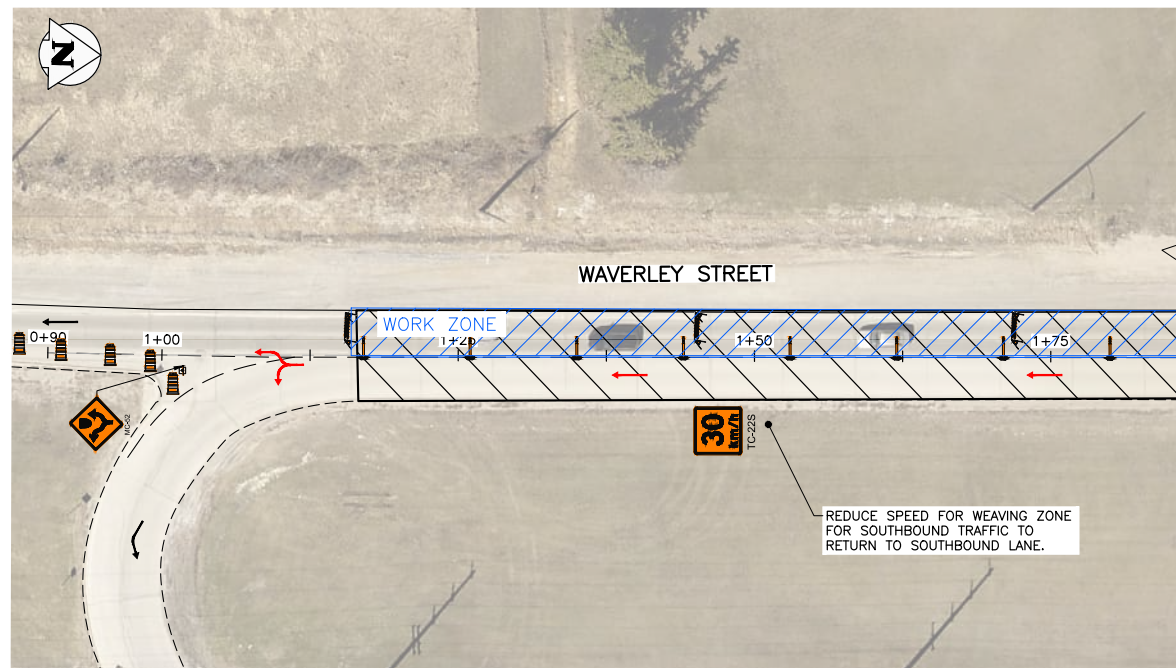
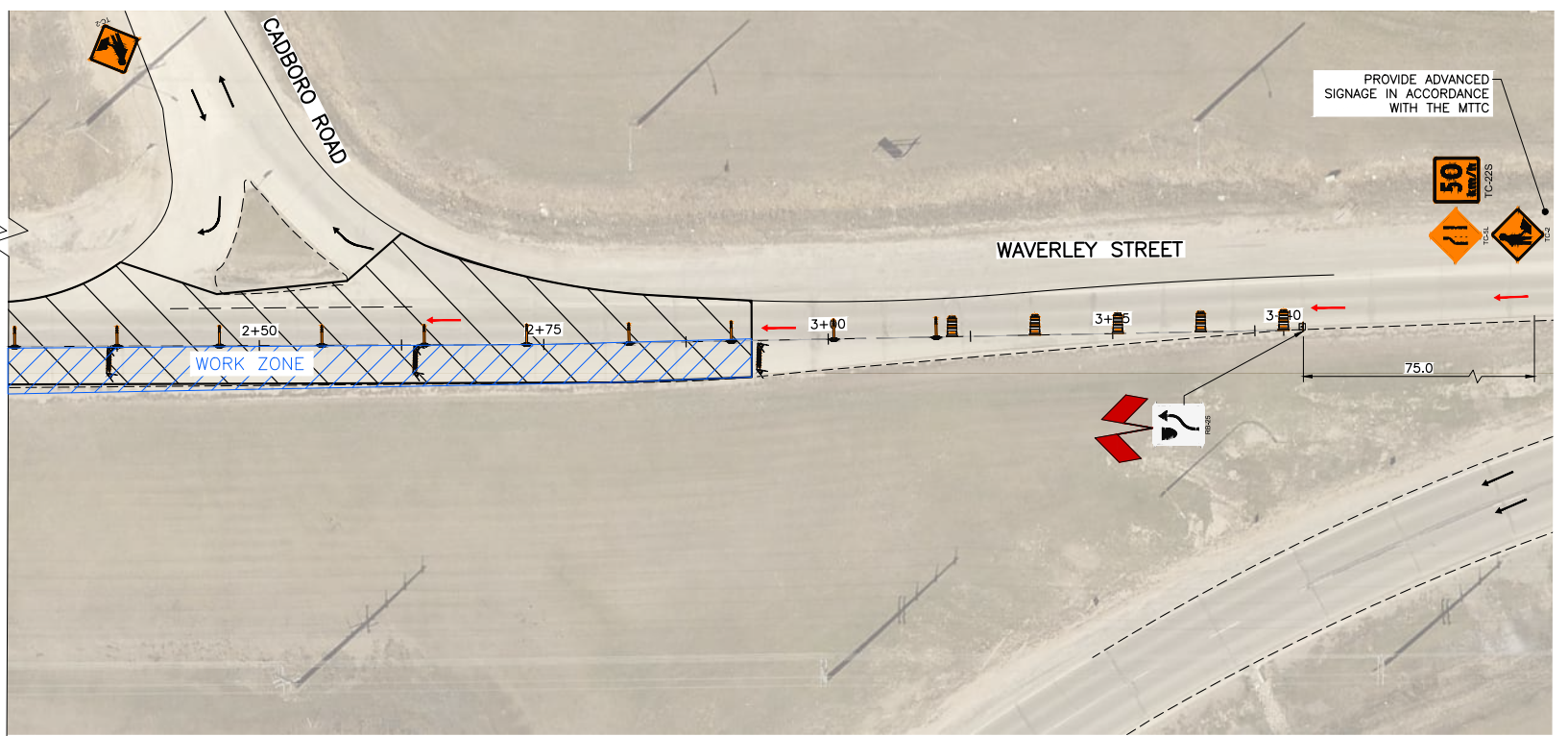
TENDER NO. 267-2023

THE CITY OF WINNIPEG PUBLIC WORKS DEPARTMENT ENGINEERING DIVISION		SHEET	OF
		14	15
PROJECT TITLE 2023 LOCAL STREET RENEWALS: MANAHAN AVENUE & VARIOUS OTHER LOCATIONS		COMPUTER FILE NAME	
PHASING & SIGNAGE PLAN: ACADEMY ROAD: MILL & FILL PHASE 2		22-0107-009	
		FIGURE	
		F-1302	

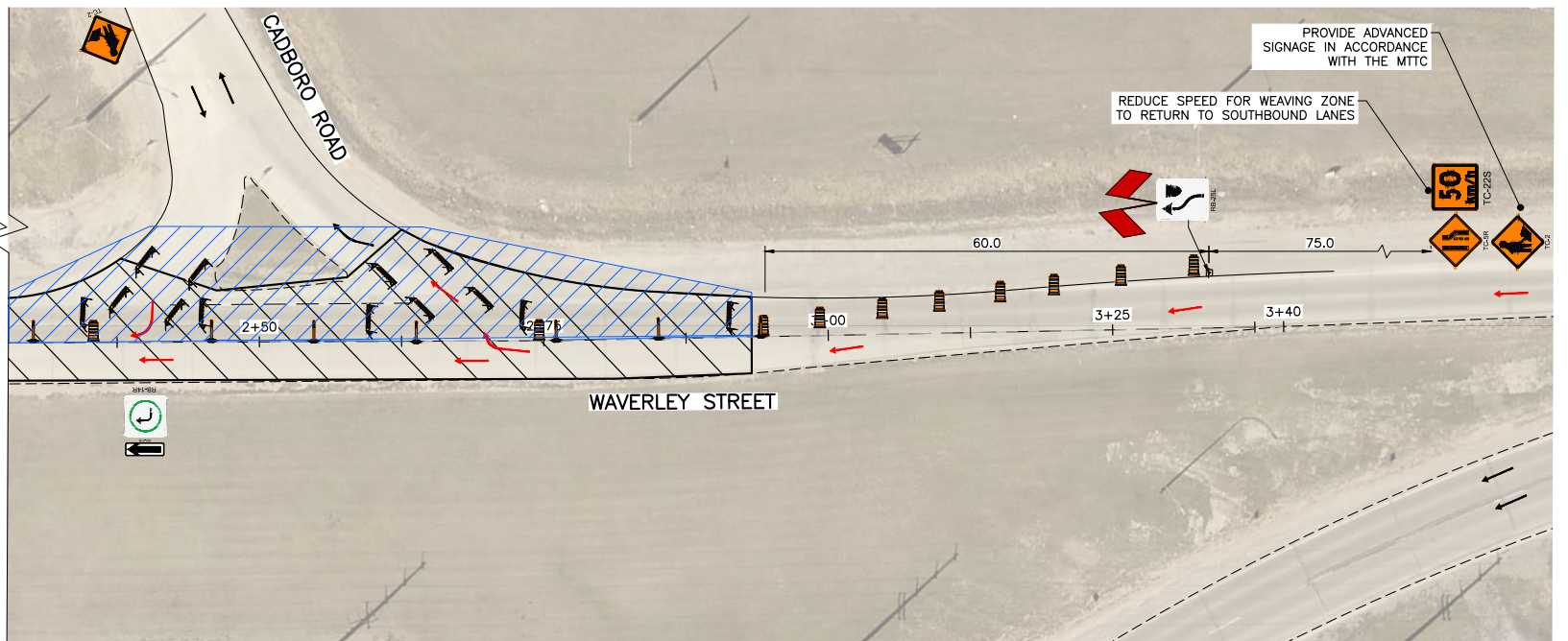
NO.	REVISIONS	DATE	BY
A	ISSUED FOR REVIEW	23/04/24	GES



STAGING & SIGNAGE: PHASE 1
ALE: NTS



STAGING & SIGNAGE: PHASE 2
SCALE: NTS



- ↔ PEDESTRIANS
- TEMPORARY TRAFFIC FLOW

PROPERTY LIMITS DELINEATION

DELINEATION OF PROPERTY LIMITS AS SHOWN ON THIS DWG DOES NOT REPRESENT A "LEGAL SURVEY". KGS GROUP MAKES NO REPRESENTATION OR WARRANTY AS TO THE ACCURACY OF PROPERTY LIMITS DELINEATED ON THIS DWG, NOR ON THE DIMENSIONAL ACCURACY OF DWG FEATURES RELATIVE TO THOSE PROPERTY LIMITS.

METRIC

WHOLE NUMBERS INDICATE MILLIMETRES
DECIMALIZED NUMBERS INDICATE METRES

GENERAL NOTES:

1. ALL TEMPORARY TRAFFIC CONTROL TO BE IN ACCORDANCE WITH THE LATEST MANUAL OF TEMPORARY TRAFFIC CONTROL ON CITY STREETS (MTTC) AT TENDER.
2. PERFORM WORK IN PHASES & STAGES TO MINIMIZE IMPACT TO TRAFFIC FLOW AND ACCESS TO RESIDENCES.
3. NOT ALL REQUIRED SIGNAGE IS SHOWN FOR EACH PHASE & SUB-PHASE. ADDITIONAL SIGNAGE TO PROVIDED IN ACCORDANCE WITH THE MTTC.
4. THE PERMANENT POSTED SPEED LIMIT OF 50 KM/HR SHALL BE USED FOR ALL TAPER LENGTHS AND OTHER CRITERIA IN THE MTTC.
5. CONTRACTOR SHALL SUBMIT THE PEDESTRIAN ACCESSIBILITY PLAN FOR REVIEW & ACCEPTANCE BY THE CONTRACT ADMINISTRATOR.
6. CONTRACTOR SHALL BE RESPONSIBLE FOR ALL PERMITS, THE SUPPLY, PLACEMENT & MAINTENANCE OF ALL TEMPORARY TRAFFIC CONTROL SIGNAGE IN ACCORDANCE WITH THE TENDER.
7. ALL LANE CLOSURE REQUESTS MUST BE SUBMITTED THROUGH THE CONTRACT ADMINISTRATOR & ARE SUBJECT TO THE APPROVAL OF THE TRAFFIC MANAGEMENT BRANCH.
8. CONTRACTOR TO PROVIDE FLAGPERSONS IN ACCORDANCE WITH THE MTTC WHEN MOVING MATERIALS OR EQUIPMENT INTO OR OUT OF TRAFFIC.
9. CONTRACTOR SHALL PROVIDE FLAGPERSONS DURING ALL ASPHALT PLACEMENT AT THE PROJECT LIMITS TO MINIMIZE IMPACT TO TRAFFIC.
10. WHEN FLAGPERSONS ARE PRESENT, FLAGPERSON SIGNAGE MUST BE PLACED IN ACCORDANCE WITH THE MTTC.

11. WHEN FLAGPERSONS ARE NOT PRESENT, THE FLAGPERSON SIGNAGE MUST BE REMOVED OR HIDDEN.
12. PROVIDE TEMPORARY RAMPS & CROSSING WHERE DIRECTED BY CONTRACT ADMINISTRATOR & IN ACCORDANCE WITH THE ACCESSIBILITY PLAN FOR PEDESTRIAN CROSSINGS WHILE PERFORMING WORK IN THE INTERSECTIONS AND APPROACHES.
13. INSTALL WARNING FLAGS IN ACCORDANCE WITH MTTC 3.07.04 ON THE FIRST WARNING SIGN IN EACH LANE DROP TAPER.
14. WHERE A LANE IS REQUIRED TO BE CLOSED ON MAJOR INTERSECTING STREETS PERFORM THE WORK ON THE TIE-IN DURING OFF PEAK-HOURS.
15. TEMPORARY TRANSIT LANDINGS WILL BE REQUIRED FOR ANY TEMPORARY TRANSIT STOP RELOCATIONS IN ACCORDANCE WITH THE MTTC.
16. CONTRACTOR TO MONITOR & MAINTAIN THE TEMPORARY SIGNAGE FOR THE DURATION OF THE PROJECT & MODIFY AS NEEDED FOR EACH STAGE OF THE WORKS.
17. CONTRACTOR TO REMEDY ANY SIGNAGE DEEMED INSUFFICIENT OR INCORRECT AS DIRECTED BY THE CONTRACT ADMINISTRATOR OR TRAFFIC MANAGEMENT.
18. STAGE SIDEWALK WORK SUCH THAT PEDESTRIAN ACCESS IS MAINTAINED ALONG ONE SIDE OF EACH ROADWAY AT ALL TIMES.
19. PROVIDE ADVANCED CONSTRUCTION & SIDEWALK CLOSED/DETOUR SIGNAGE IN ACCORDANCE WITH THE MTTC. PROVIDE SMALL CONES IN CENTRE WHERE BARRICADES .GUIDE PEDESTRIANS THROUGH THE CONSTRUCTION ZONE.

REDUCED SPEED LIMITS

1. REDUCED SPEED LIMITS SUBJECT TO THE APPROVAL OF THE TRAFFIC MANAGEMENT BRANCH.
2. PROVIDE REDUCED SPEED SIGNS IN ADVANCE OF CONSTRUCTION ZONE RESTRICTING THE SPEED TO 50 KM/HR FOR PHASE 1 & 30 KM/HR FOR PHASE 2 EXIT FOLLOWING MTC 3.05.
3. VARIABLE MESSAGE SIGNS FOR ADVANCED SIGNAGE ON WAVERLEY STREET MAY BE REQUIRED. CONTRACTOR TO PROVIDE VMS IF REQUIRED BY TRAFFIC MANAGEMENT.

TRAFFIC MANAGEMENT: WAVERLEY ROAD MILL & FILL

1. PERFORM WORK IN TWO PHASES, LANE-AT-A-TIME.
 - 1.1. PHASE 1: MILL & FILL THE MEDIAN SOUTHBOUND LANE WHILE MAINTAINING TRAFFIC FLOW ON THE INSIDE SOUTHBOUND LANE.
 - 2.2. PHASE 2: MILL & FILL THE INSIDE SOUTHBOUND LANE WHILE MAINTAINING TRAFFIC FLOW ON THE MEDIAN SOUTHBOUND LANE.
3. PROVIDE TEMPORARY ACCESS TO CADBORO ROAD DURING PHASE 2 THROUGH CONSTRUCTION ZONE.
4. PROVIDE TAPER LENGTHS & SIGNAGE FOR A POSTED SPEED LIMIT OF 70 KM/HR.
5. SEE MTTC FIGURE 1A.

TENDER NO. 267-2023

THE CITY OF WINNIPEG
PUBLIC WORKS DEPARTMENT
ENGINEERING DIVISION

KGS GROUP

PROJECT TITLE
2023 LOCAL STREET RENEWALS: MANAHAN AVENUE & VARIOUS OTHER LOCATIONS

PHASING & SIGNAGE PLAN:
WAVERLEY STREET: MILL & FILL
PHASE 1 & 2

SHEET OF 15 15

COMPUTER FILE NAME
22-0107-009

FIGURE
F-1401

NO.	REVISIONS	DATE	BY
A	ISSUED FOR REVIEW	23/04/24	GES

Filepath: C:\Users\smalley\Desktop\FMS\22-0107-009\22-0107-009_C2_267-2023_F-ALL_Signage Figures - TabF-1401 Plotted By: SSmalley 23/04/24 [Mon 10:32pm]
 All rights reserved. KGS GROUP