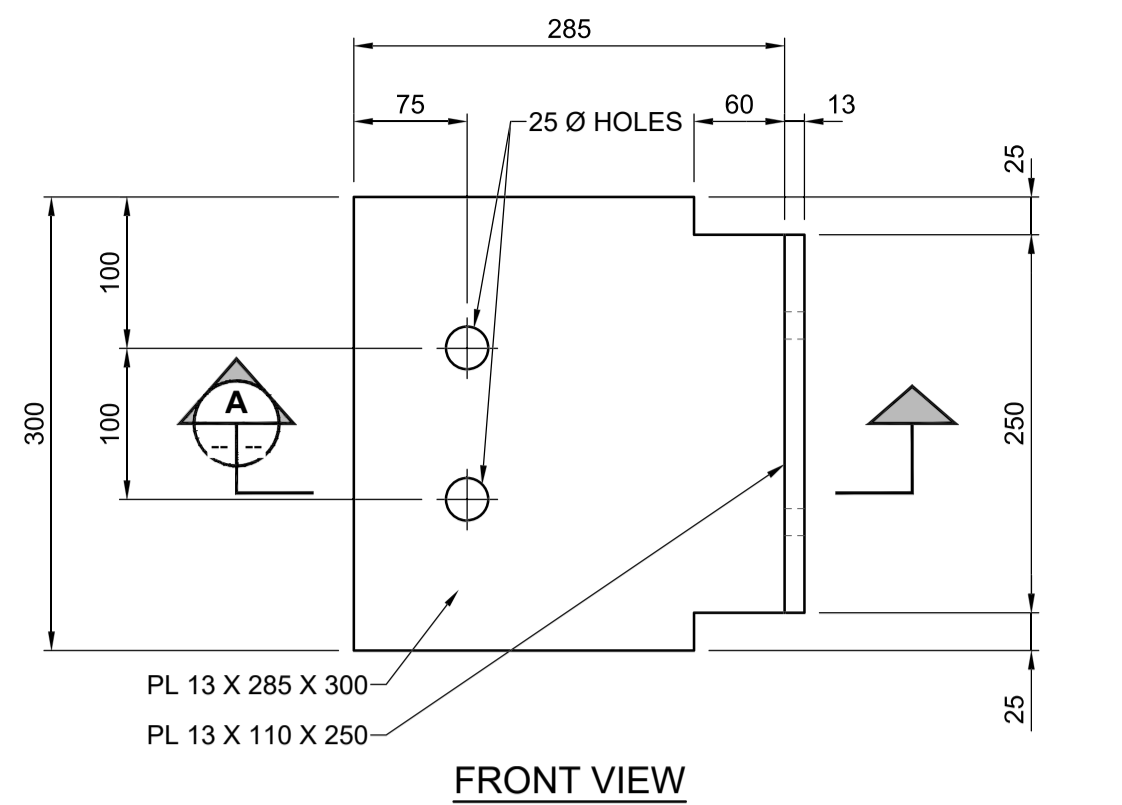


FRONT VIEW END VIEW

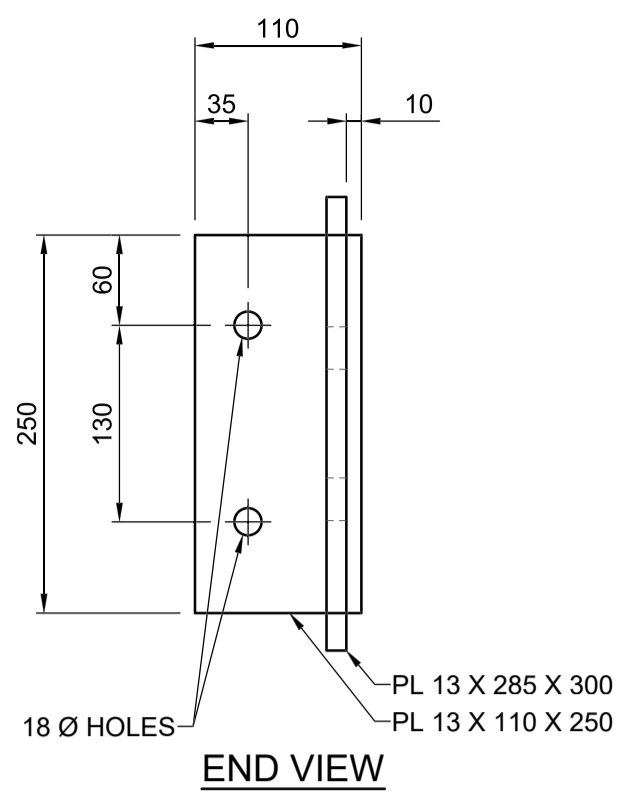
ANGLE MK "S1"
SCALE 1:5



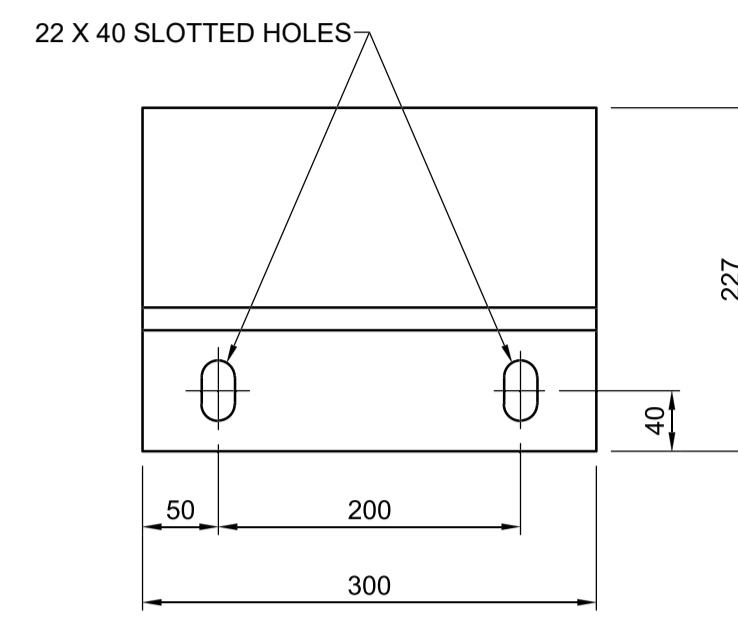
FRONT VIEW

SECTION A
SCALE 1:5

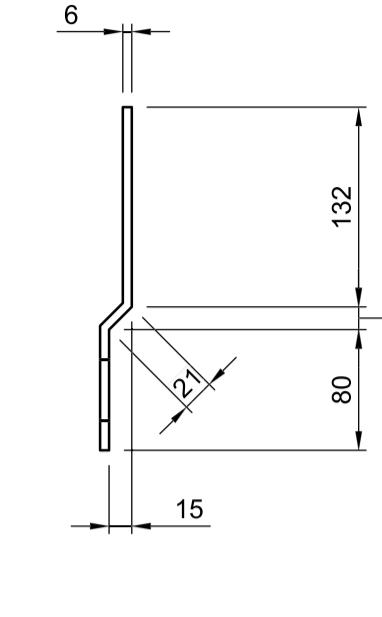
BRACKET MK "S2"
SCALE 1:5



END VIEW

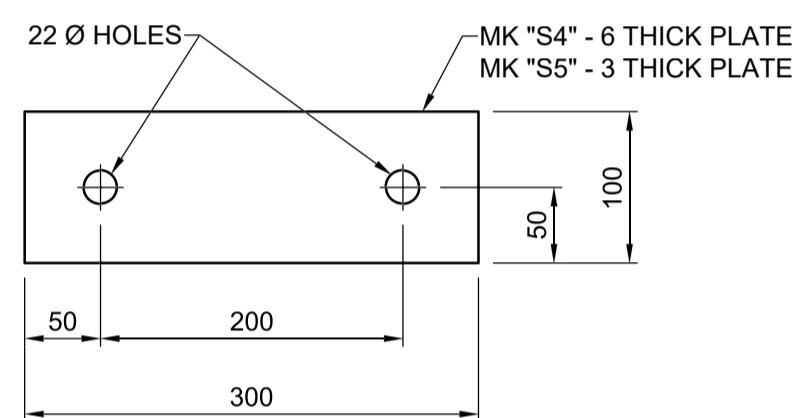


FRONT VIEW

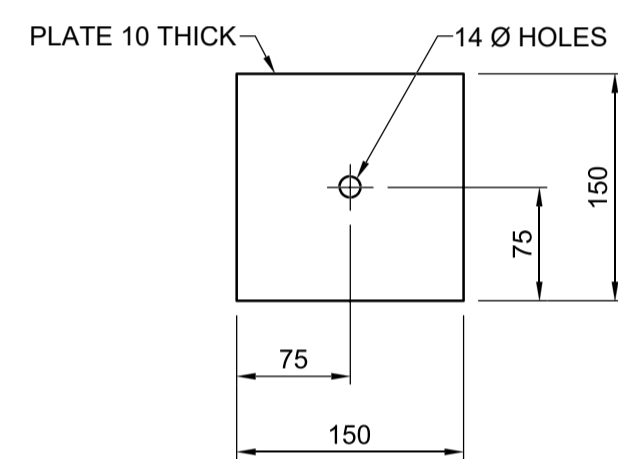


END VIEW

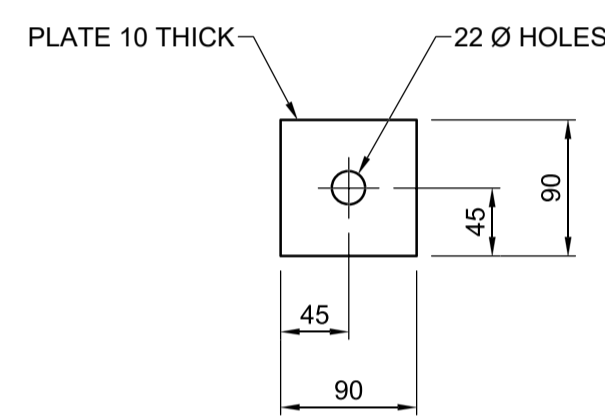
PLATE MK "S3"
SCALE 1:5



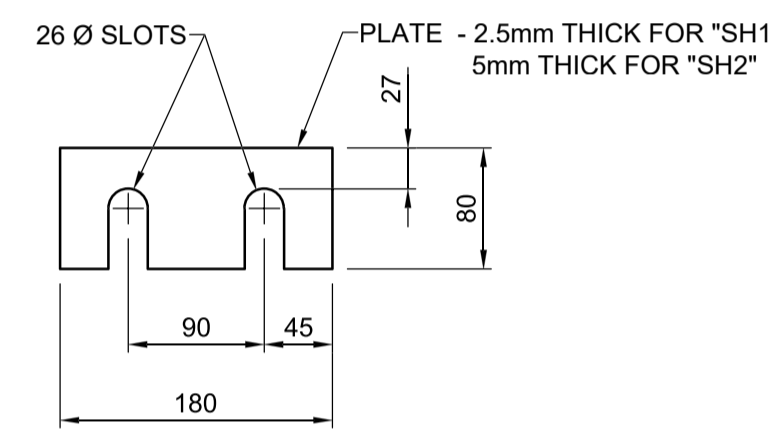
FILLER PLATES MK "S4" & "S5"
SCALE 1:5



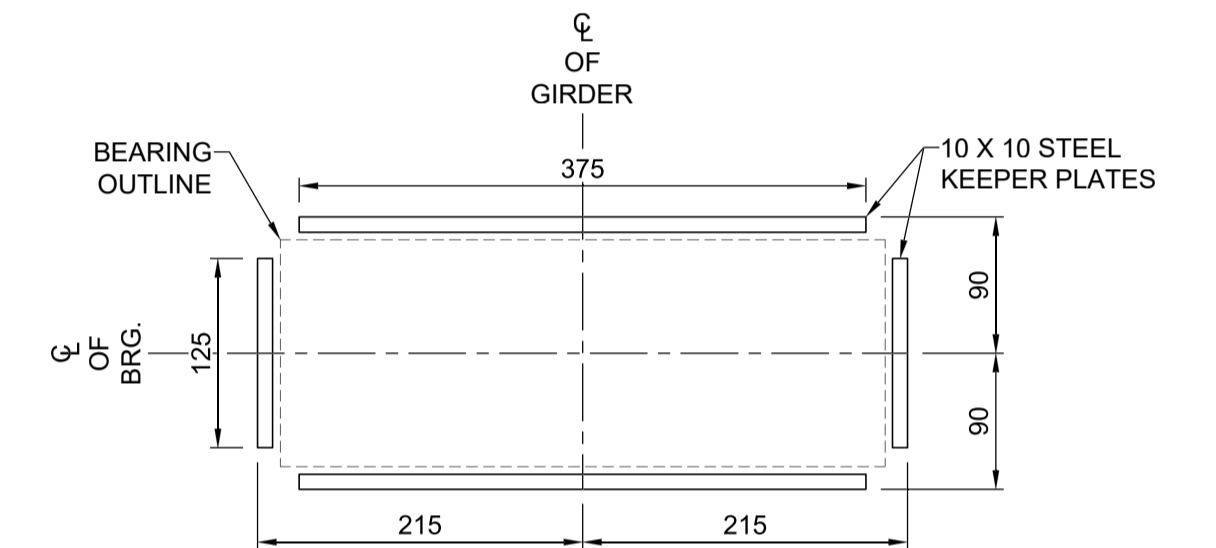
WASHER MK "A1"
SCALE 1:5



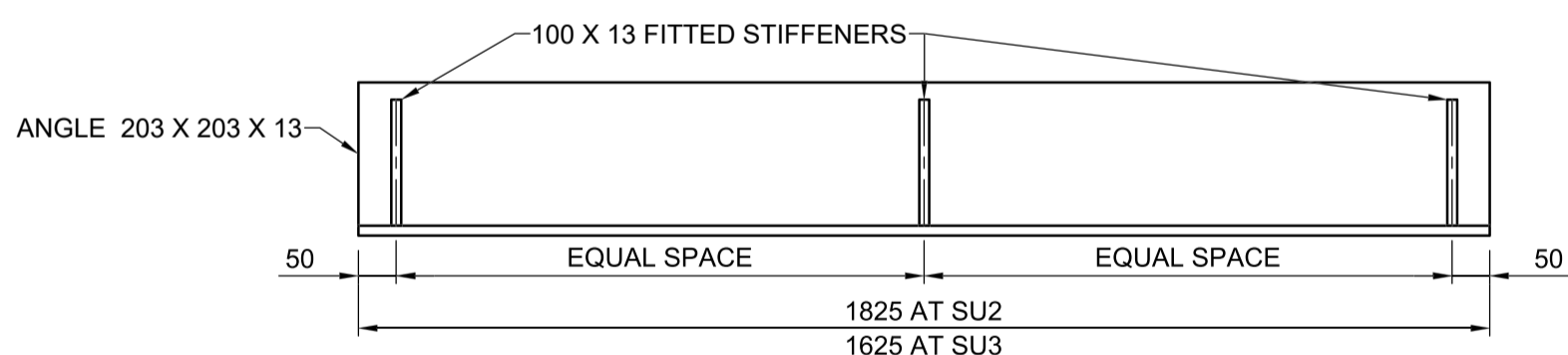
WASHER MK "A2"
SCALE 1:5



SHIM PLATES MK "SH1" & "SH2"
SCALE 1:5



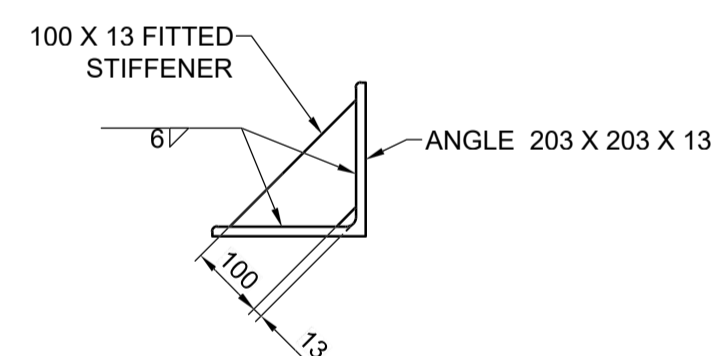
DETAIL 2
SCALE 1:5



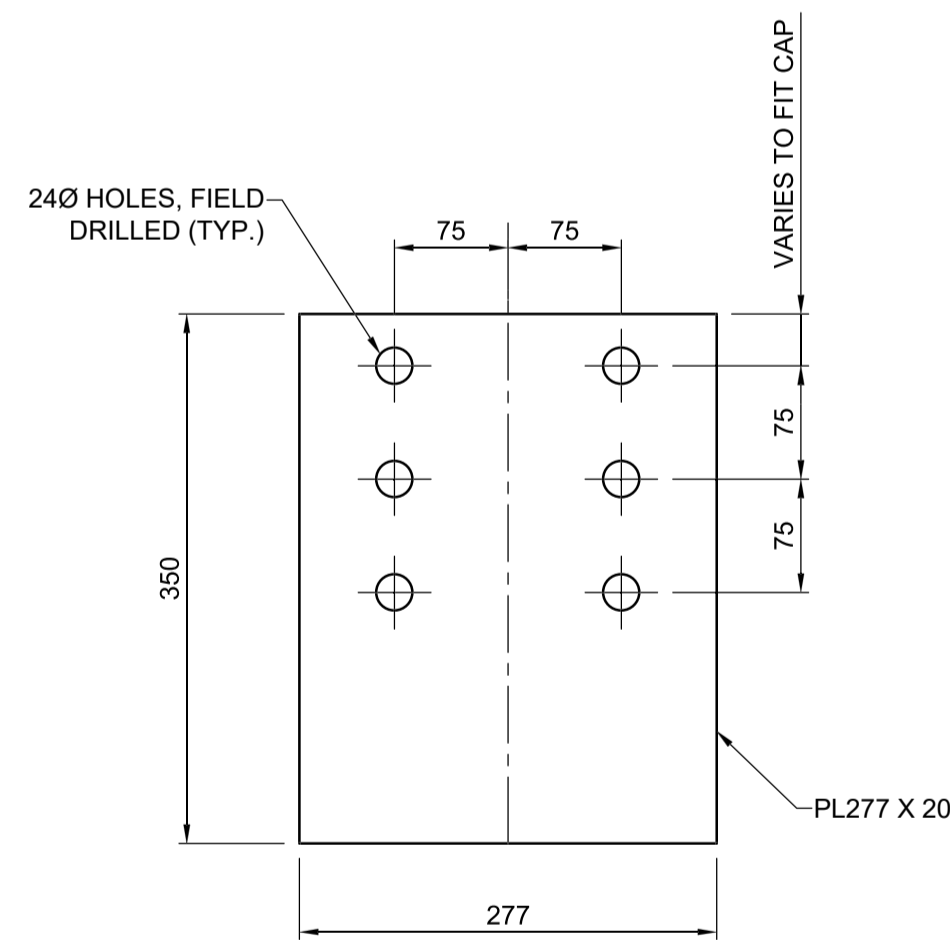
ELEVATION

ICE BREAKER UNIT MK "IU1"

SCALE 1:10

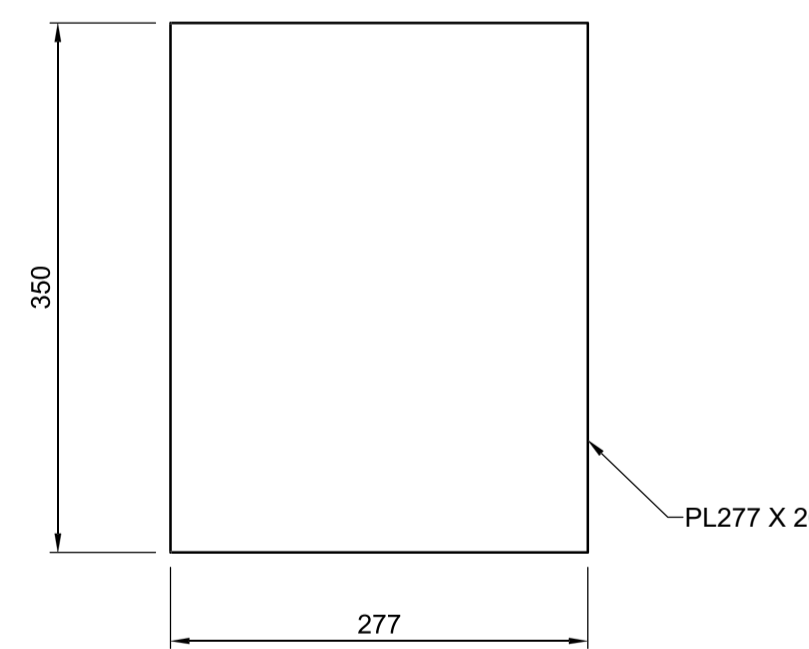


END VIEW



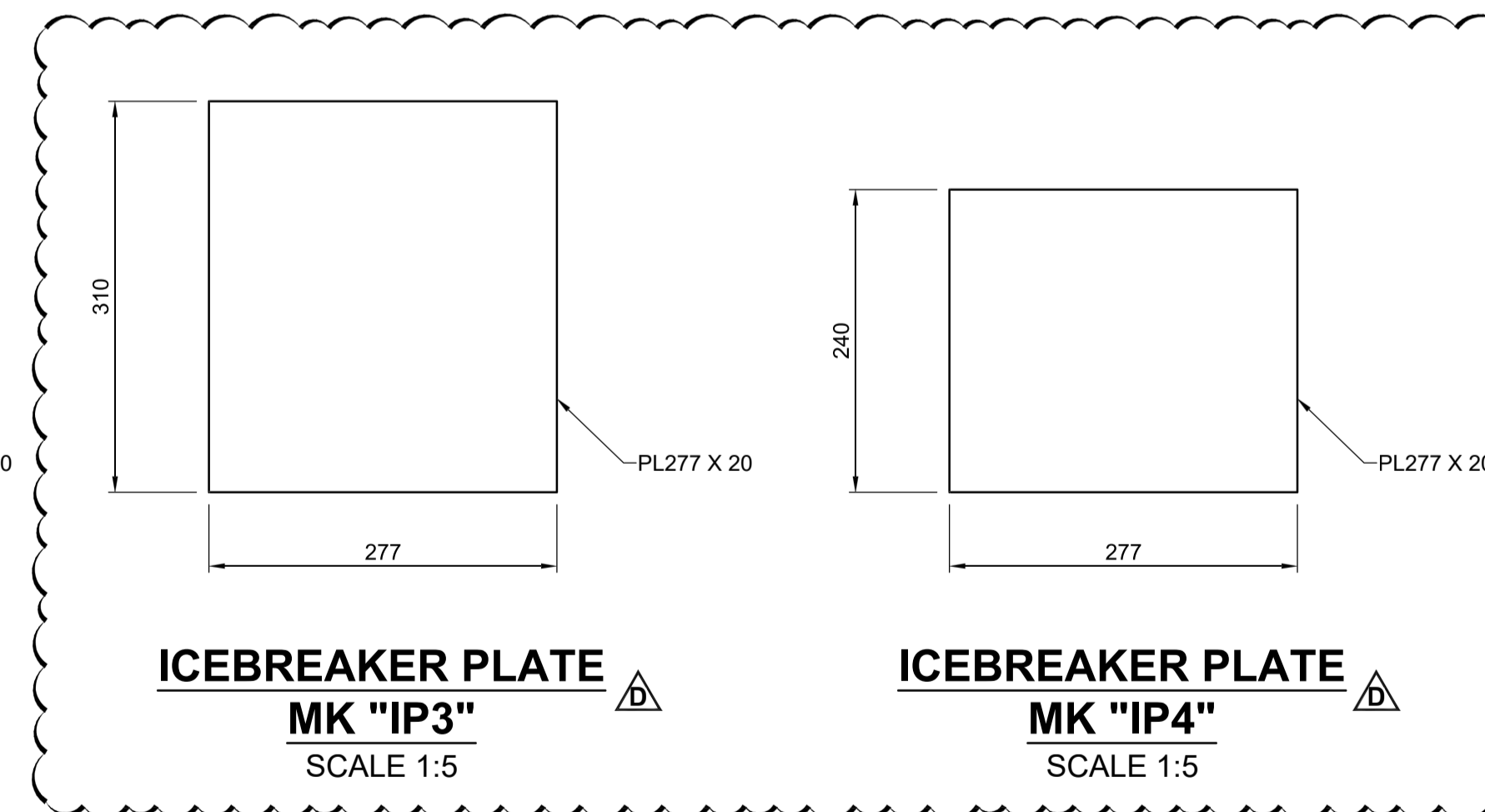
ICEBREAKER PLATE MK "IP1"

SCALE 1:5



ICEBREAKER PLATE MK "IP2"

SCALE 1:5

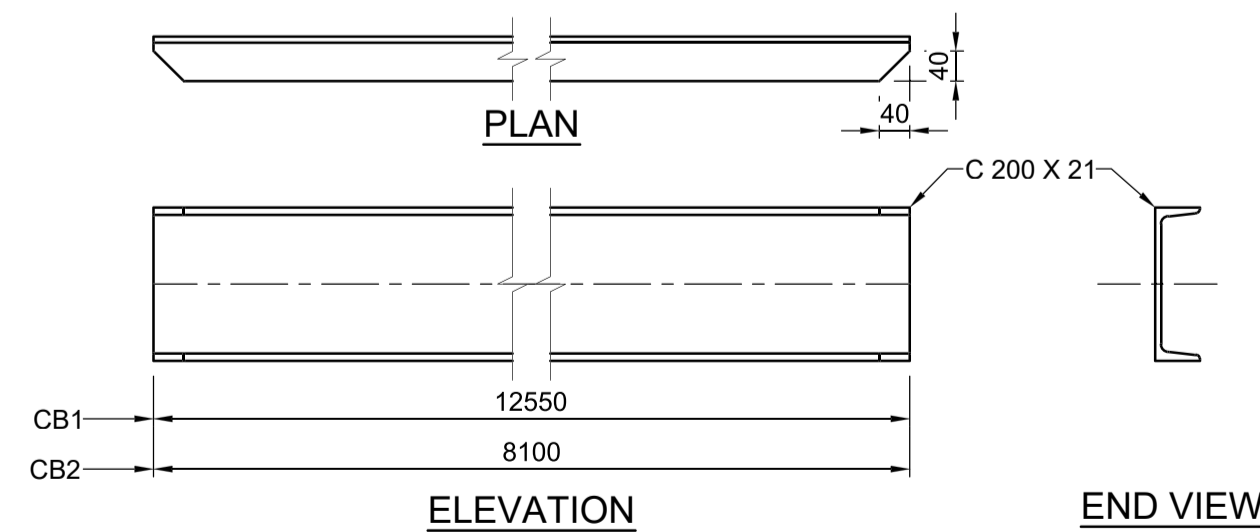


ICEBREAKER PLATE MK "IP3"

SCALE 1:5

ICEBREAKER PLATE MK "IP4"

SCALE 1:5



CROSS BRACES MK "CB1" & "CB2"

SCALE 1:10

LOCATION APPROVED UNDERGROUND STRUCTURES

SUPR. U/G STRUCTURES DATE COMMITTEE

NOTE: LOCATION OF UNDERGROUND STRUCTURES AS SHOWN ARE BASED ON THE BEST INFORMATION AVAILABLE BUT NO GUARANTEE IS GIVEN THAT ALL EXISTING UTILITIES ARE SHOWN OR THAT THE GIVEN LOCATIONS ARE EXACT. CONFIRMATION OF EXISTENCE AND EXACT LOCATION OF ALL SERVICES MUST BE OBTAINED FROM THE INDIVIDUAL UTILITIES BEFORE PROCEEDING WITH CONSTRUCTION.

BM	78-009	N.W. Cor. Paddington Rd. & Dakota St., 19 mm dia. x 6.1 m
ELEV	232.749 m	I.B. in Valve Box, 5.5 m S. of N.L. Paddington Rd. & on W.L. of Dakota St. in traffic island.
D	ISSUED FOR ADDENDUM 1	23/08/23 BAP
C	ISSUED FOR TENDER	23/08/02 BAP
B	ISSUED FOR 95% REVIEW	23/06/27 BAP
A	ISSUED FOR 50% REVIEW	23/04/14 BAP
No.	REVISIONS	YY/MM/DD BY



DESIGNED BY	ALP	CHECKED BY	AGG
DRAWN BY	AS	APPROVED BY	BAP
HOR SCALE	AS SHOWN	RELEASED FOR CONSTRUCTION	
VERT SCALE	AS SHOWN		
DATE	JUNE 27, 2023	DATE	

PROFESSIONAL'S SEAL
CONSULTANT FILE NAME
2203665-CBR-DD-PILECAPS02.dwg

THE CITY OF WINNIPEG
PUBLIC WORKS DEPARTMENT
ENGINEERING DIVISION

CREEK BEND ROAD BRIDGE REPLACEMENT AND RELATED WORKS

STEEL ACCESSORY DETAILS

CITY DRAWING NUMBER: B149-23-15
SHEET 15 OF 52
DRAWING NUMBER: 15

TENDER No. 335-2023



METRIC
WHOLE NUMBERS INDICATE MILLIMETRES
DECIMALIZED NUMBERS INDICATE METRES