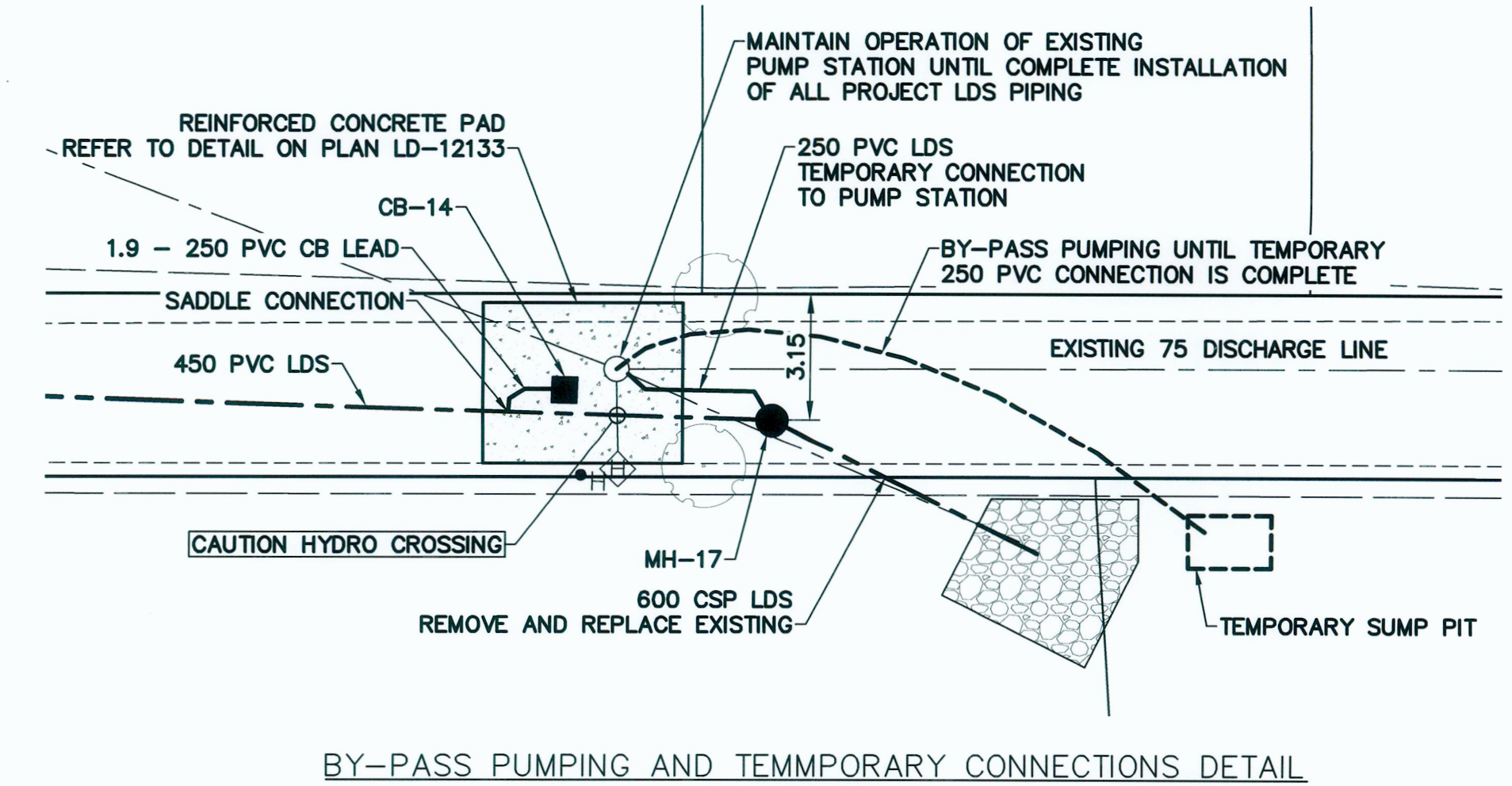


NOTE: CHAINAGES SHOWN ARE ALONG S PL ALLEY

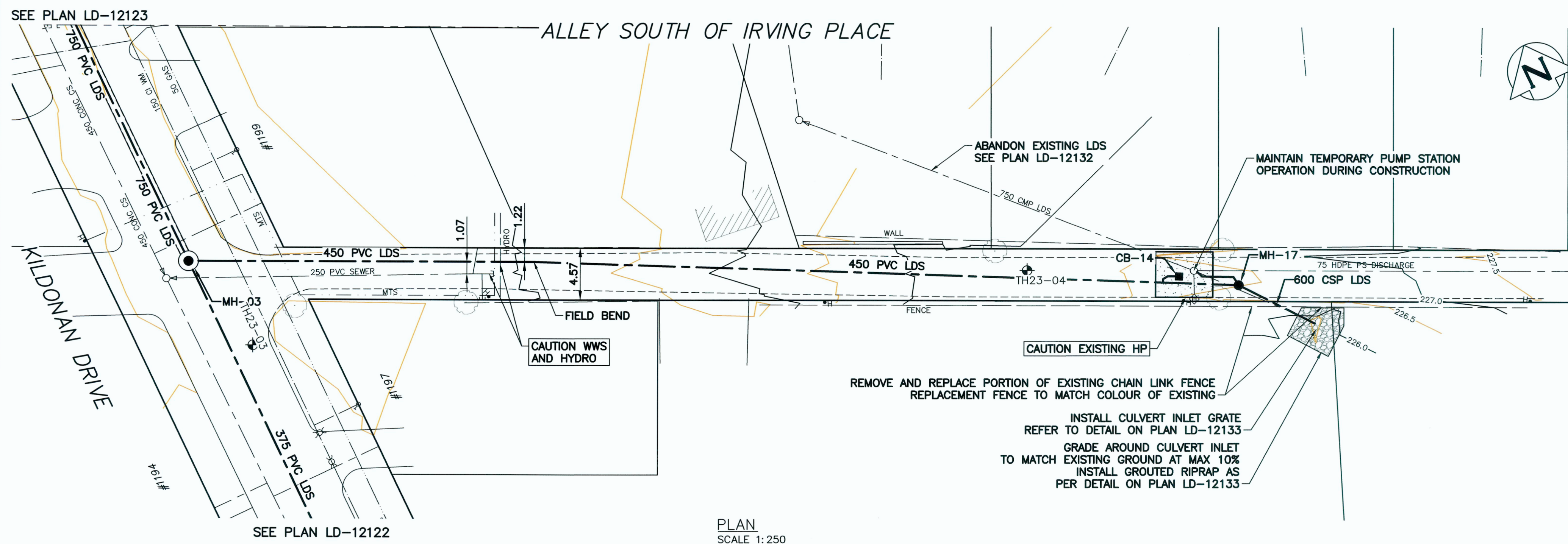


BY-PASS PUMPING AND TEMPORARY CONNECTIONS DETAIL  
SCALE 1:150

	ASPHALT/CONCRETE
	ORGANICS
	CLAY FILL
	CLAY
	SILT
	SAND WITH GRAVEL



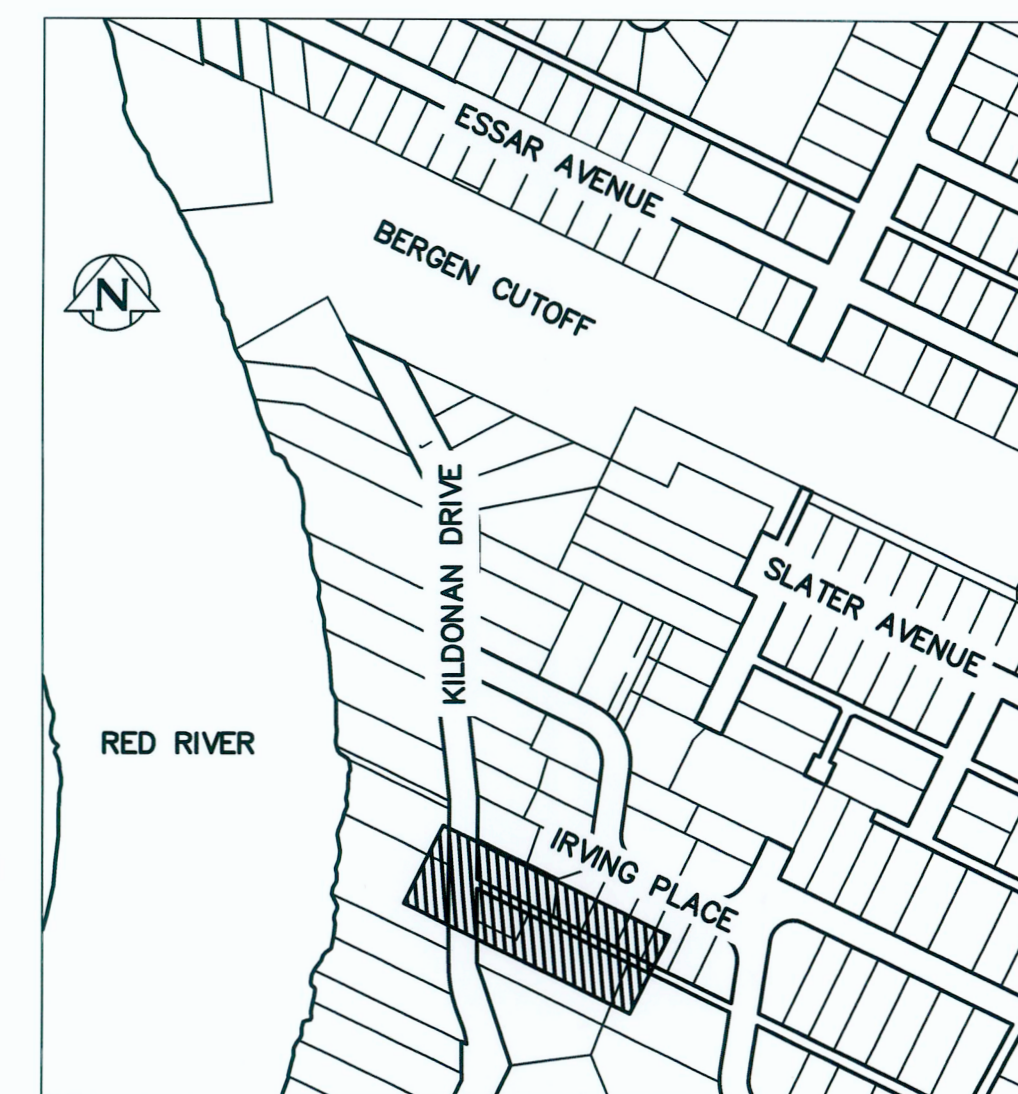
IRVING PLACE BACK LANE TEMPORARY PUMP STATION



PLAN  
SCALE 1:250

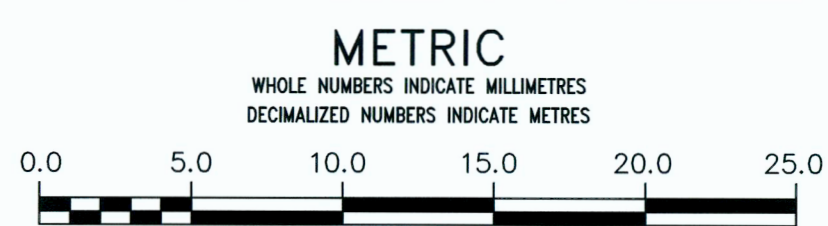
NOTES:

- CB-14 TO HAVE STANDARD FRAME AND GRATED COVER.
- CITY OF WINNIPEG PERSONNEL WILL MAINTAIN TEMPORARY PUMPING OPERATIONS ALONG THE IRVING PLACE BACK LANE FOR THE DURATION OF CONSTRUCTION. CONTRACTOR TO COORDINATE CONSTRUCTION ACTIVITIES WITH THE CITY TO PREVENT SERVICE DISRUPTIONS.
- CONTRACTOR RESPONSIBLE TO MAINTAIN BY-PASS PUMPING 24 HOURS PER DAY UNTIL TEMPORARY 250Ø PVC CONNECTION TO THE PUMP STATION IS COMPLETE.
- UPON COMPLETION OF ALL PIPING WORKS, COORDINATE WITH CITY PERSONNEL TO DECOMMISSION THE PUMP STATION AND ABANDON TEMPORARY 250Ø PVC CONNECTION.



KEY PLAN  
SCALE: 1:4000

FOR INDEX PAGE SEE DWG LD-12121



ENGINEERS  
GEOSCIENTISTS  
MANITOBA  
Certificate of Authorization  
KGS Group  
No. 245

**PROPERTY LIMITS DELINEATION**  
DELINEATION OF PROPERTY LIMITS AS SHOWN ON THIS DWG DOES NOT REPRESENT A "LEGAL SURVEY". KGS GROUP MAKES NO REPRESENTATION OR WARRANTY AS TO THE ACCURACY OF PROPERTY LIMITS DELINEATED ON THIS DWG, NOR ON THE DIMENSIONAL ACCURACY OF DWG FEATURES RELATIVE TO THOSE PROPERTY LIMITS.

**LOCATION APPROVED UNDERGROUND STRUCTURES**  
SUPV. U/G STRUCTURES COMMITTEE DATE  
NOTE:  
LOCATION OF UNDERGROUND STRUCTURES AS SHOWN ARE BASED ON THE BEST INFORMATION AVAILABLE BUT NO GUARANTEE IS GIVEN THAT ALL EXISTING UTILITIES ARE SHOWN OR THAT THE GIVEN LOCATIONS ARE EXACT. CONFIRMATION OF EXISTENCE AND EXACT LOCATION OF ALL SERVICES MUST BE OBTAINED FROM THE INDIVIDUAL UTILITIES BEFORE PROCEEDING WITH CONSTRUCTION.

B.M. ELEV.	NO.	REVISIONS	DATE	BY
	A	ISSUED FOR TENDER	2023 05 10	AD

<b>KGS GROUP</b>	
DESIGNED BY: GH	CHECKED BY: TLE
DRAWN BY: GH	APPROVED BY: RBO
SCALE: HORIZONTAL 1:250 VERTICAL 1:50	RELEASED FOR CONSTRUCTION
DATE: 2023 05 10	DATE:

ENGINEER'S SEAL  
PROVINCE OF MANITOBA  
P.G.T.  
HEINRICHS  
Member  
38162  
REGISTERED PROFESSIONAL ENGINEER  
CONSULTANT DRAWING NUMBER  
22-0107-024\_C11

**THE CITY OF WINNIPEG**  
WATER AND WASTE DEPARTMENT  
ENGINEERING DIVISION

McLEOD CREEK DRAINAGE IMPROVEMENTS

**ALLEY SOUTH OF IRVING PLACE**  
STA 1+00 TO STA 2+15

SHEET 12 OF 16  
CITY DRAWING NUMBER  
LD-12131

**ISSUED FOR TENDER**  
NOT TO BE USED FOR CONSTRUCTION