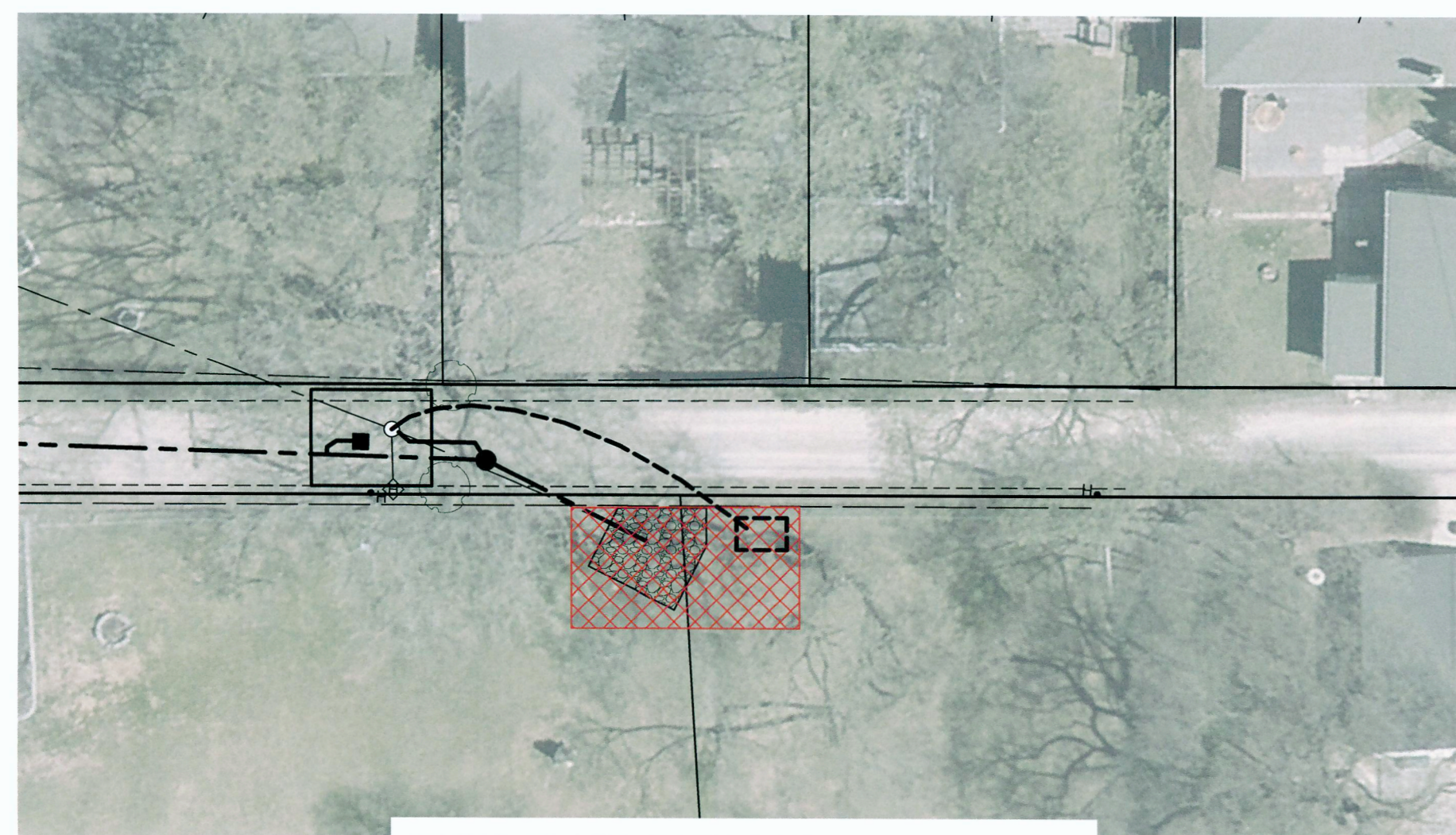
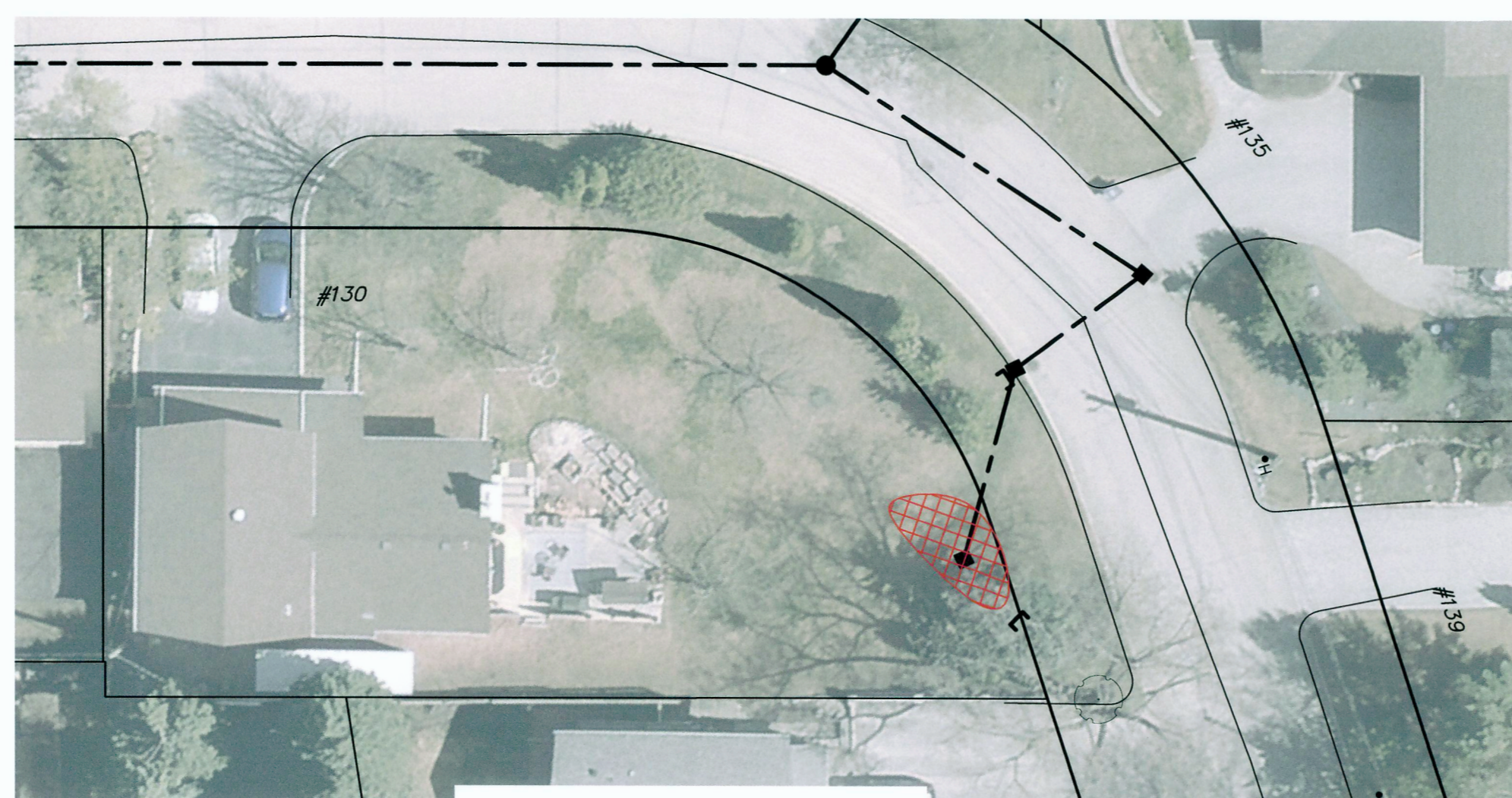


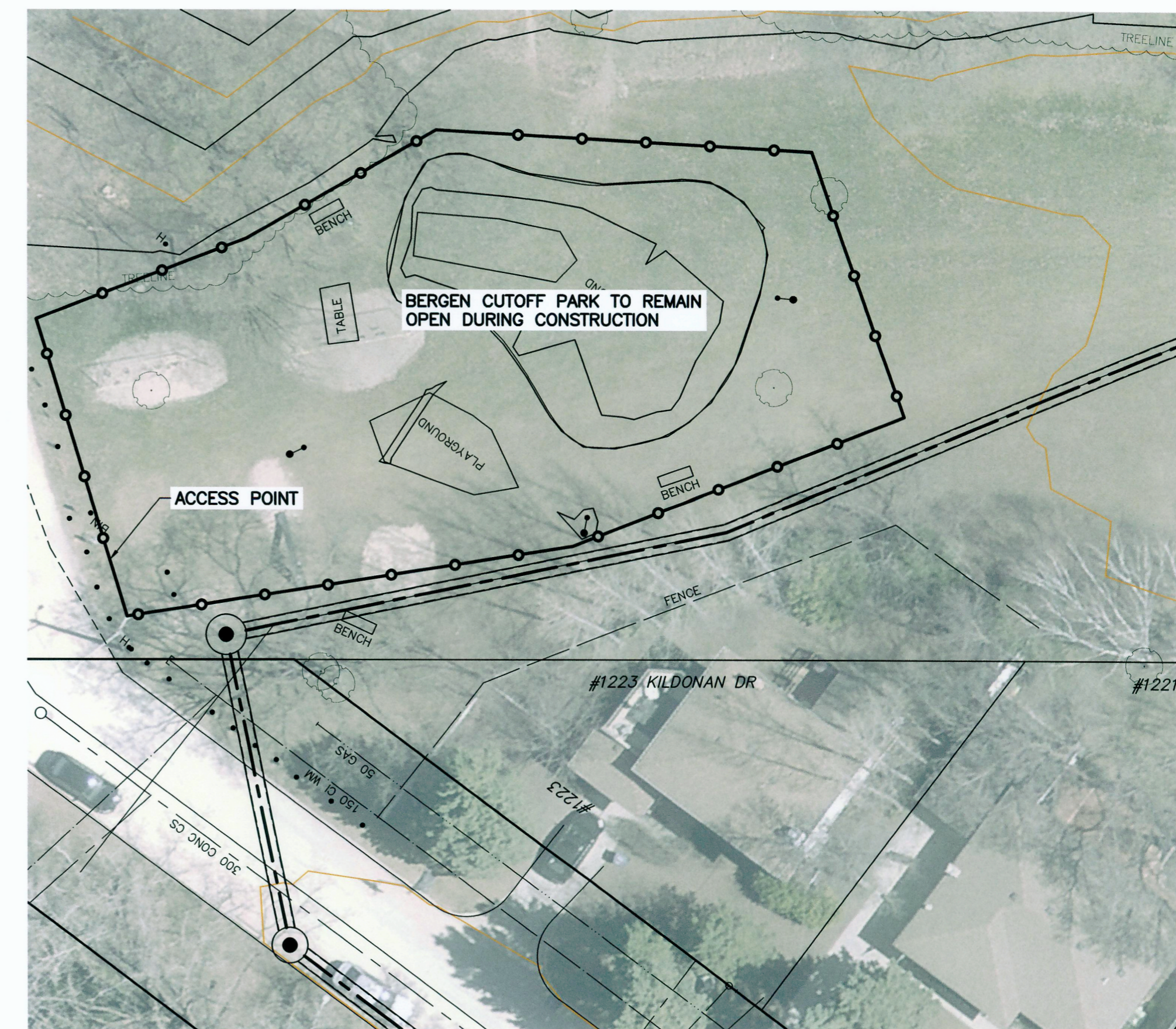
ESSAR AVENUE RESTORATION AND TEMPORARY FENCING  
SCALE 1:250



IRVING PLACE BACK LANE RESTORATION  
SCALE 1:250



IRVING PLACE RESTORATION  
SCALE 1:250



BERGEN CUTOFF PARK TEMPORARY FENCING  
SCALE 1:250



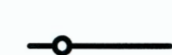
ESTIMATED EXTENTS OF DISTURBED ROADWAY  
REQUIRED FOR THE CONSTRUCTION OF  
350-2023.



ESTIMATED EXTENTS OF DISTURBED GRASSED  
AREA REQUIRED FOR THE CONSTRUCTION OF  
350-2023.



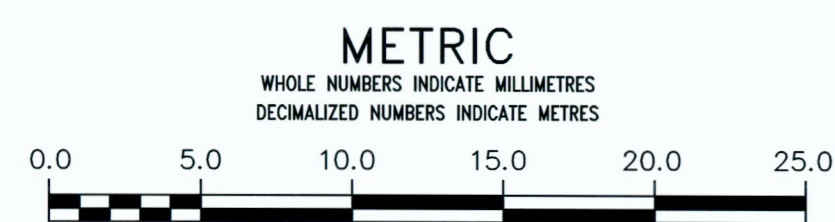
ESTIMATED EXTENTS OF DEADFALL AND  
DEBRIS REMOVAL AS WELL AS TOPSOIL AND  
SEEDING OF NATIVE GRASSES AREA REQUIRED  
FOR THE CONSTRUCTION OF 350-2023.



MINIMUM FENCING REQUIREMENTS DURING  
CONSTRUCTION

**ISSUED FOR TENDER**  
NOT TO BE USED FOR CONSTRUCTION

FOR INDEX PAGE SEE  
DWG LD-12121



**ES** ENGINEERS  
GEOSCIENTISTS  
MANITOBA  
Certificate of Authorization  
KGS Group  
No. 245

**PROPERTY LIMITS  
DELINEATION**  
DELINERATION OF PROPERTY  
LIMITS AS SHOWN ON THIS  
DWG DOES NOT REPRESENT A  
"LEGAL SURVEY". KGS GROUP  
MAKES NO REPRESENTATION  
OR WARRANTY AS TO THE  
ACCURACY OF PROPERTY  
LIMITS DELINEATED ON THIS  
DWG, NOR ON THE  
DIMENSIONAL ACCURACY OF  
DWG FEATURES RELATIVE TO  
THOSE PROPERTY LIMITS.

**LOCATION APPROVED  
UNDERGROUND STRUCTURES**

SUPV. U/G STRUCTURES COMMITTEE DATE

NOTE:  
LOCATION OF UNDERGROUND STRUCTURES AS  
SHOWN ARE BASED ON THE BEST INFORMATION  
AVAILABLE BUT NO GUARANTEE IS GIVEN THAT ALL  
EXISTING UTILITIES ARE SHOWN OR THAT THE GIVEN  
LOCATIONS ARE EXACT. CONFIRMATION OF  
EXISTENCE AND EXACT LOCATION OF ALL SERVICES  
MUST BE OBTAINED FROM THE INDIVIDUAL UTILITIES  
BEFORE PROCEEDING WITH CONSTRUCTION.

B.M.  
ELEV.

NO.	ISSUED FOR TENDER	DATE	BY
A	ISSUED FOR TENDER	2023 05 10	GH
	REVISIONS	DATE	BY

**KGS  
GROUP**

DESIGNED BY GH  
CHECKED BY TLE  
DRAWN BY GH  
APPROVED BY RSO  
SCALE:  
HORIZONTAL AS NOTED  
VERTICAL 1:50  
DATE 2023 05 10  
PLOT DATE: 2023 05 10

ENGINEER'S SEAL  
PROVINCE OF MANITOBA  
G.T.  
HEINRICHS  
Member  
38162  
REGISTERED PROFESSIONAL ENGINEER  
CONSULTANT DRAWING NUMBER  
22-0107-024\_C15

**THE CITY OF WINNIPEG**  
WATER AND WASTE DEPARTMENT  
ENGINEERING DIVISION  
McLEOD CREEK DRAINAGE IMPROVEMENTS  
RESTORATION AND FENCING EXTENTS  
SHEET 16 OF 16  
CITY DRAWING NUMBER  
LD-12135