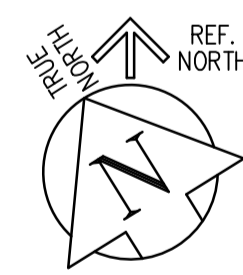
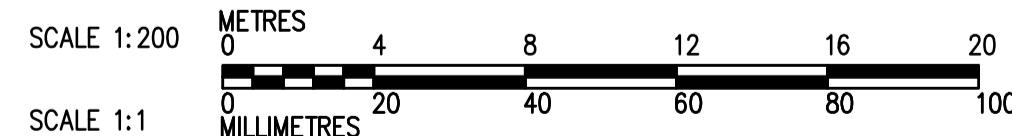


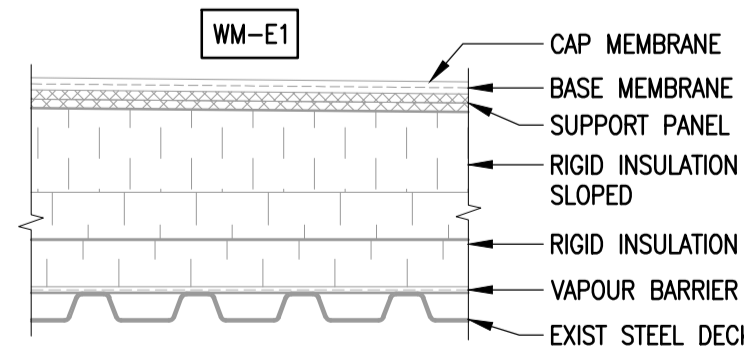
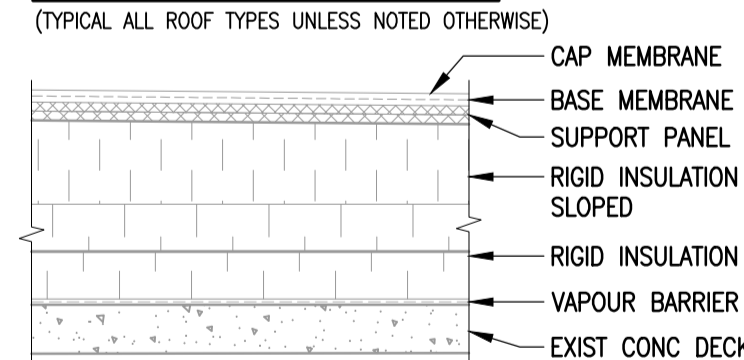
FOR CONTINUATION REFER TO DRAWING 1-0601B-B0065-001
FOR CONTINUATION REFER TO DRAWING 1-0601B-B0066-001



DEMOLITION ROOF PLAN
1 : 200 (WM & WI)

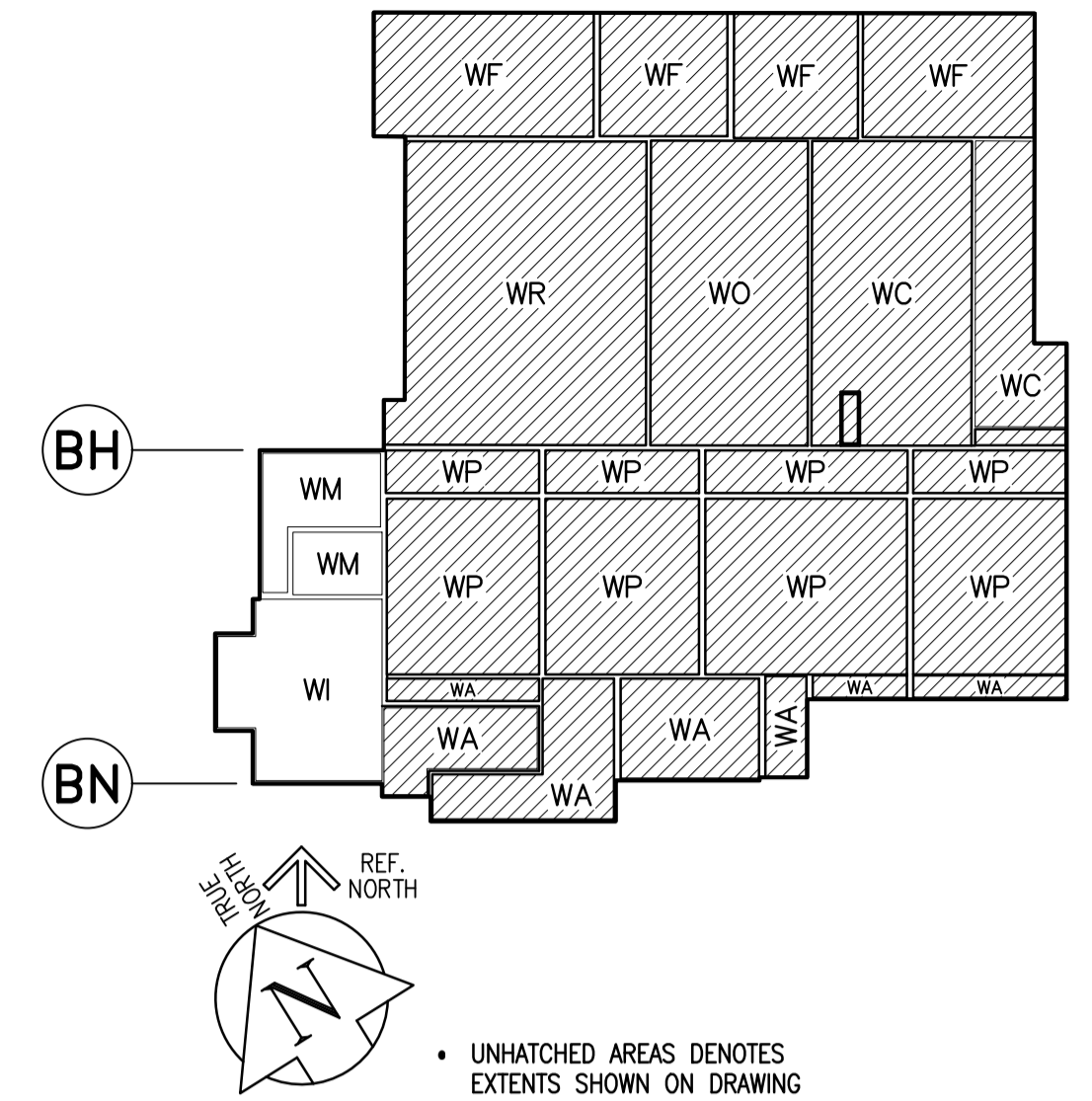


EXISTING ROOF ASSEMBLIES
(TYPICAL ALL ROOF TYPES UNLESS NOTED OTHERWISE)



EXISTING ROOF LEGEND
(TYPICAL ALL ROOF TYPES UNLESS NOTED OTHERWISE)

- SBS GRANULATED CAP MEMBRANE, HEAT WELDED
 - SBS BASE MEMBRANE, HEAT WELDED
 - 2 x 6.0mm ASPHALTIC SUPPORT PANEL, ASPHALT ADHERED
 - 1 x 140.0mm SLOPED EXPANDED POLYSTYRENE INSULATION, ASPHALT ADHERED
 - 2 x 63.5mm EXTRUDED POLYSTYRENE INSULATION, ASPHALT ADHERED
 - 2-PLY ORGANIC FELT PAPER, ASPHALT ADHERED
 - EXISTING CONCRETE DECK
- WM-E1**
- SBS GRANULATED CAP MEMBRANE, HEAT WELDED
 - SBS BASE MEMBRANE, HEAT WELDED
 - 2 x 6.0mm ASPHALTIC SUPPORT PANEL, ASPHALT ADHERED
 - 1 x 140.0mm SLOPED EXPANDED POLYSTYRENE INSULATION, ASPHALT ADHERED
 - 2 x 63.5mm EXTRUDED POLYSTYRENE INSULATION, ASPHALT ADHERED
 - 2-PLY ORGANIC FELT PAPER, ASPHALT ADHERED
 - EXISTING STEEL DECK



DEMOLITION ROOF PLAN KEYNOTES

- REMOVE AND DISCARD EXISTING ROOF ASSEMBLY ON ALL ROOF FACETS TO EXPOSE EXISTING DECK, INCLUDING SUPPORT PANELS, INSULATION AND MEMBRANES. REFER TO ASSEMBLY NOTES FOR EXISTING CONSTRUCTION.
- REMOVE AND DISCARD EXISTING 2-PLY SBS MODIFIED BITUMEN FLASHING ASSEMBLY AND ASSOCIATED MATERIALS FROM VENT ASSEMBLIES. REFER TO MECHANICAL FOR VENT ASSEMBLY DEMOLITION. TYPICAL.
- REMOVE AND DISCARD EXISTING PARAPET METAL CAP FLASHING, TRIMS, AND RETAIN EXTERIOR ALUMINUM PANELS FOR RE-INSTALLATION. REMOVE PLYWOOD, WOOD BLOCKING AND 2 PLY SBS MODIFIED BITUMEN FLASHING ASSEMBLIES TO EXPOSE THE EXISTING CONCRETE MASONRY BLOCK AS SHOWN ON DETAILS. TYPICAL.
- REMOVE AND DISCARD EXISTING 2-PLY SBS MODIFIED BITUMEN FLASHING ASSEMBLY AND ASSOCIATED MATERIALS FROM EXISTING ROOF DRAIN ASSEMBLIES. REFER TO MECHANICAL FOR ROOF DRAIN DEMOLITION. TYPICAL.
- REMOVE AND DISCARD EXISTING METAL CAP FLASHING, PLYWOOD AND WOOD BLOCKING, AND 2-PLY SBS MODIFIED BITUMEN FLASHING ASSEMBLIES TO EXPOSE DECK AND CONCRETE MASONRY AS SHOWN ON DETAILS AT ALL ROOF EXPANSION JOINTS. REPORT LOCATIONS OF DETERIORATED MASONRY TO THE CONTRACT ADMINISTRATOR. PROCEED WITH REPAIR OF DETERIORATED MASONRY AT THE DIRECTION OF THE CONTRACT ADMINISTRATOR. TYPICAL.
- REMOVE AND DISCARD EXISTING METAL CAP FLASHING, WOOD BLOCKING AND 2-PLY SBS MODIFIED BITUMEN FLASHING ASSEMBLIES AT ALL CONTROL JOINT DETAILS. TYPICAL.
- REMOVE AND DISCARD EXISTING WOOD CURBS. PROVIDE TEMPORARY SUPPORT TO MECHANICAL EQUIPMENT FOR DURATION OF ROOF REPLACEMENT. SCHEDULE TEMPORARY SHUT DOWN OF MECHANICAL EQUIPMENT WITH THE CONTRACT ADMINISTRATOR TO ALLOW EXISTING SUPPORT REMOVAL AND TEMPORARY SUPPORT INSTALLATION. MAINTAIN MECHANICAL EQUIPMENT IN CONTINUOUS OPERATION DURING ROOF REPLACEMENT. REFER TO MECHANICAL. TYPICAL.
- REMOVE AND DISCARD EXISTING SBS FLASHING MEMBRANE ON ALL SLEEPERS. WOOD SLEEPERS TO REMAIN IN PLACE. REPORT WOOD SLEEPER CONSTRUCTION AND CONDITION TO THE CONTRACT ADMINISTRATOR. REPLACE DETERIORATED WOOD SLEEPERS AT THE DIRECTION OF THE CONTRACT ADMINISTRATOR. TYPICAL.
- TEMPORARILY REMOVE ANTENNA TO ACCOMMODATE ROOF ASSEMBLY DEMOLITION. COORDINATE TEMPORARY REMOVAL OF ANTENNA WITH CONTRACT ADMINISTRATOR. PROVIDE UNINTERRUPTED SERVICES DURING REMAINDER WORK. TYPICAL.
- REMOVE AND DISCARD EXISTING 2-PLY SBS MODIFIED BITUMEN FLASHING MEMBRANE ON LOUVRED INTAKE/EXHAUST CURBS. METAL LOUVRED INTAKE/EXHAUST TO REMAIN. TYPICAL.
- REMOVE AND DISCARD EXISTING 2-PLY SBS MEMBRANE FLASHING ASSEMBLY AT THE ROOF WALL INTERFACE. TYPICAL.
- REMOVE AND DISCARD EXISTING SCUPPER ASSEMBLY. TYPICAL.
- REMOVE AND DISCARD EXISTING WOOD CURB AND 2-PLY SBS MODIFIED BITUMEN FLASHING ASSEMBLY AROUND EXHAUST FAN HOOD, GOOSENECK VENT HOOD AND EXHAUST FAN HOOD ASSEMBLIES. REFER TO MECHANICAL FOR SCOPE OF MECHANICAL EQUIPMENT DEMOLITION. TYPICAL.
- REMOVE 2-PLY SBS MODIFIED BITUMEN FLASHING ASSEMBLY AND METAL VENT FLASHING AT ALL PIPE LOCATIONS. PIPE UNITS TO REMAIN. CAUTION: VENT PIPES FOR OZONE DESTRUCT UNITS. CONTRACTOR TO WEAR OZONE MONITORS WHEN WORKING WITHIN 5 METRES OF THESE AREAS. (MONITORS SUPPLIED BY CITY) TYPICAL.
- REMOVE AND DISCARD INTAKE ASSEMBLY AND EXISTING 2-PLY SBS MODIFIED BITUMEN FLASHING ASSEMBLY. TYPICAL.
- REMOVE AND DISCARD EXISTING 2-PLY SBS MODIFIED BITUMEN FLASHING ASSEMBLY, WOOD BLOCKING AND METAL STEP FLASHING AT THE ROOF WALL INTERFACE. REMOVE METAL WALL PANELS AND ASSOCIATED METAL TRIMS TO EXPOSE WALL. MARK PANEL AS NECESSARY FOR RE-INSTALLATION. TYPICAL.
- TEMPORARILY RELOCATE WIND SOCK TO ACCOMMODATE ROOF ASSEMBLY DEMOLITION. PRIOR TO RELOCATION, CONFIRM WITH CONTRACT ADMINISTRATOR.
- REMOVE AND DISCARD ABANDONED CURB. TYPICAL.
- TEMPORARILY REMOVE ACCESS LADDER, RETAIN FOR RE-INSTALLATION.
- REMOVE AND DISCARD EXISTING ROOF ASSEMBLY WITHIN PLENUM AREA TO EXPOSE EXISTING DECK, INCLUDING SUPPORT PANEL, INSULATION AND MEMBRANES. REMOVE TEMPORARILY METAL LOUVERS AND RETAIN FOR RE-INSTALLATION.
- EXISTING CHIMNEY TO BE REMOVED.

10		
9		
8		
7	1-0601B-M0014-001	MECHANICAL WM & WI ROOF DEMOLITION PLAN
6	1-0601B-B0074-001	BUILDING ROOF DEMOLITION DETAILS 3 OF 4
5	1-0601B-B0073-001	BUILDING ROOF DEMOLITION DETAILS 2 OF 4
4	1-0601B-B0072-001	BUILDING ROOF DEMOLITION DETAILS 1 OF 4
3	1-0601B-B0066-001	BUILDING WA ROOF DEMOLITION PLAN
2	1-0601B-B0065-001	BUILDING WP ROOF DEMOLITION PLAN
1	1-0601B-G0004-001	BUILDING NOTES, SCHEDULE & LEGENDS
NO.	DRAWING NUMBER	REFERENCE DRAWING TITLE
REFERENCE DRAWINGS		

**ENGINEERS
GEOSCIENTISTS
MANITOBA**
Certificate of Authorization
Crosier Kilgour & Partners Ltd.
No. 235

B.M. ELEV.			
00	ISSUED FOR TENDER	23/03/21	GJH
NO.	REVISIONS	DATE	BY

300-275 Carlton Street
Winnipeg, Manitoba R3C 5S6
T 204. 943. 7501
F 204. 943. 7507
2022-1008

Crosier Kilgour & Partners Ltd.
CONSULTING STRUCTURAL ENGINEERS

DESIGNED BY	GJH	CHECKED BY	JAW
DRAWN BY	LOL	APPROVED BY	GJH
SCALE:	1:200	RELEASED FOR CONSTRUCTION BY:	
		DATE	2023/03/21

ENGINEER'S SEAL
PROVINCE OF MANITOBA
J.A. WELLS
23/03/21
REGISTERED PROFESSIONAL ENGINEER

CONSULTANT DRAWING NO. S2.4

THE CITY OF WINNIPEG
WATER AND WASTE DEPARTMENT
ENGINEERING DIVISION

DRINKING WATER TREATMENT PLANT
MAIN BUILDING
ROOF REPLACEMENT

CITY FILE NUMBER **W-1049**
SHEET 1 OF 1
CITY DRAWING NUMBER 1-0601B-B0067-001

BUILDING
WM & WI ROOF DEMOLITION
PLAN