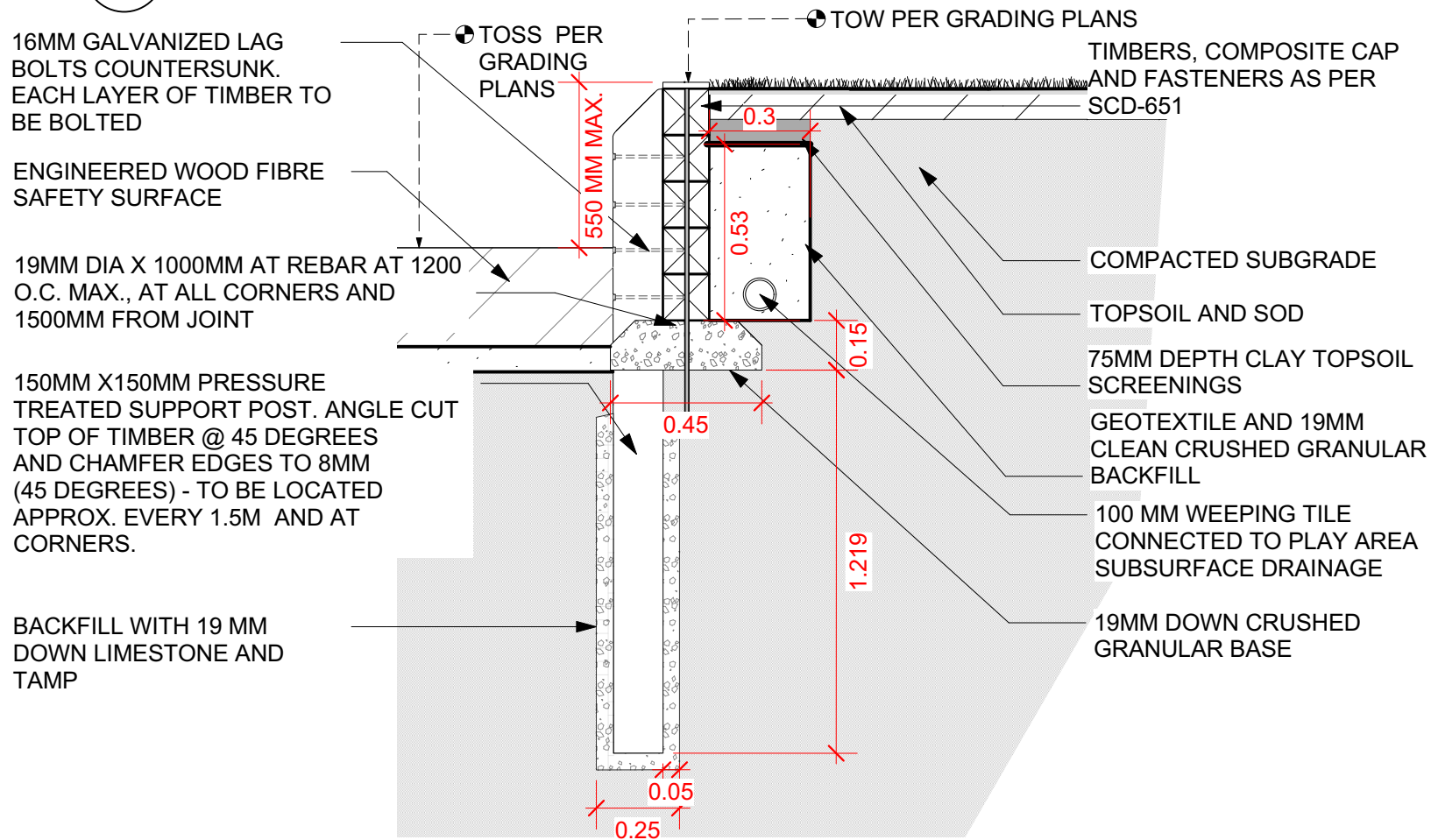
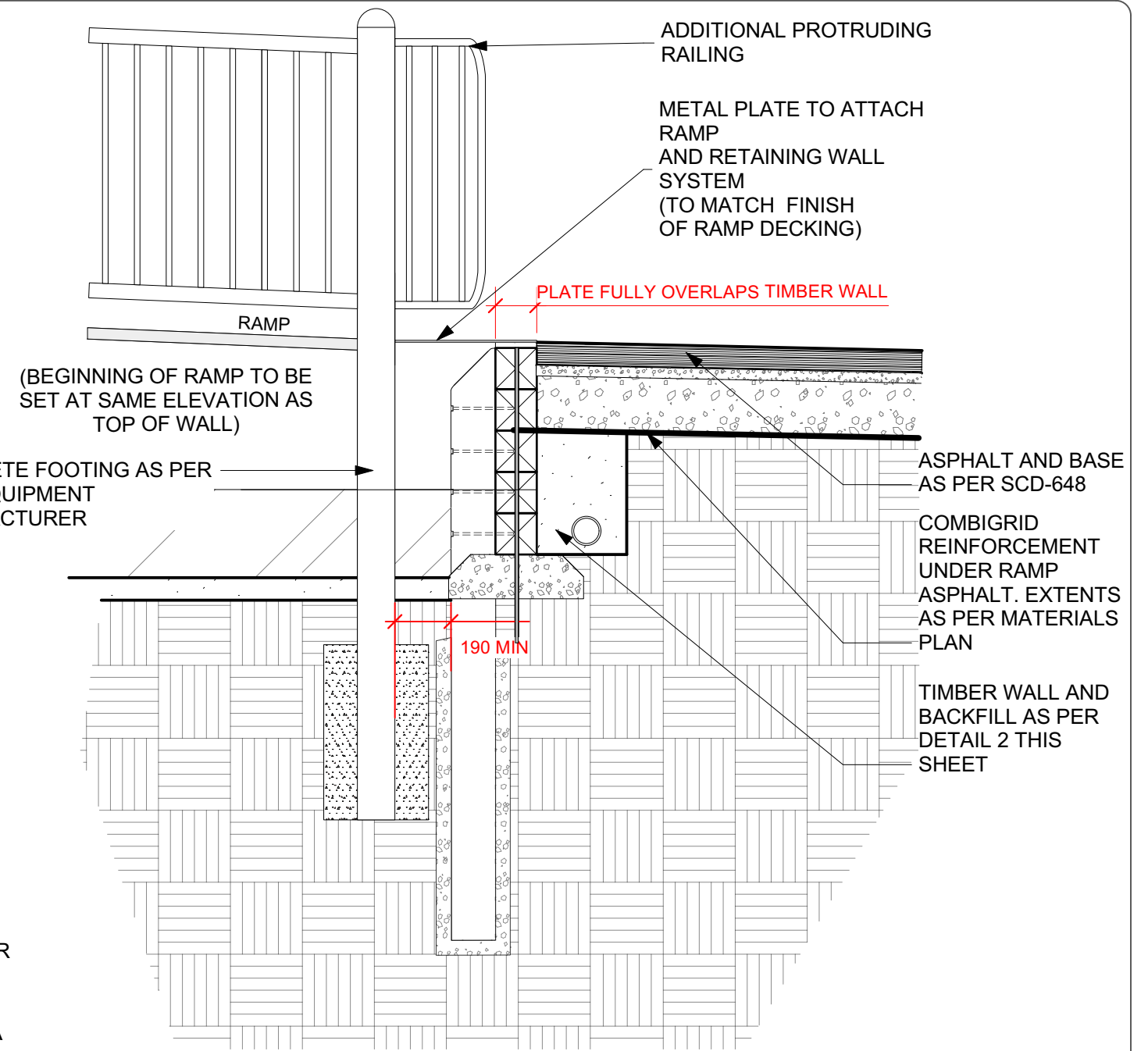


1 Rolled Asphalt Accessible Entry
Scale: 1:10



2 4 and 5 Tier Timber Retaining Wall Against Sod
Scale: 1:20



3 4 and 5 Tier Timber Retaining Wall At Ramp
Scale: 1:20

- Notes:**
1. Install wall members square, plumb, level & true.
 2. Backfill limestone in 150 mm lifts, tamp ea. lift thoroughly.
 3. Treat cuts and damages to timber surface in field w/ suitable preservative for outdoor use.
 4. Brown PT timber only.
 5. Surplus material to be legally dispose of off site.

CONTRACTOR TO CONFIRM ALL DIMENSIONS AND REPORT ANY DISCREPANCIES TO CONTRACT ADMINISTRATOR PRIOR TO CONSTRUCTION. LOCATION OF UNDERGROUND STRUCTURES AS SHOWN ARE BASED ON THE BEST INFORMATION AVAILABLE BUT NO GUARANTEE IS GIVEN THAT ALL EXISTING UTILITIES ARE SHOWN OR THAT THE GIVEN LOCATIONS ARE EXACT. CONFIRMATION OF EXISTENCE AND EXACT LOCATION OF ALL SERVICES MUST BE OBTAINED FROM THE INDIVIDUAL UTILITIES BEFORE PROCEEDING WITH CONSTRUCTION.

THE CITY OF WINNIPEG
Planning, Property and Development Department
Planning and Land Use Division
Unit 15 - 30 Fort Street, Winnipeg, MB, (R3C 4X5)

| | | | |
|--------------|--|-------------|------|
| DESIGNED BY | IM | CHECKED BY | |
| DRAWN BY | IM | APPROVED BY | |
| HORIZ. SCALE | Varies | | |
| VERT. SCALE | | | |
| DATE | June 2023 | | |
| | MANAGER, PARK AND OPEN SPACES | | DATE |
| | MANAGER, PLANNING AND LAND USE DIVISION | | DATE |

DRAWING TITLE
**Highbury Park
Playground Redevelopment
Details**

SITE ADDRESS 1660 Dakota Street

DRAWING NO.
H.23-D5

BID OPPORTUNITY NO.
402-2023