

DRAWING NOTES:

GENERAL:

1. THE LADDERS WERE DESIGNED AND SHALL BE CONSTRUCTED IN ACCORDANCE WITH THE 2011 MBC & MANITOBA WORKPLACE SAFETY AND HEALTH DIVISION.
2. DO NOT SCALE DRAWINGS.
3. VERIFY ALL DIMENSIONS SHOWN PRIOR TO COMMENCING CONSTRUCTION.
4. ALL FASTENERS TO BE INSTALLED FOLLOWING MANUFACTURER'S SPECIFICATIONS.
5. VERIFY LOCATIONS OF ALL LADDERS ON STRUCTURE AND REPORT ANY DISCREPANCIES TO ENGINEER PRIOR TO CONSTRUCTION.
6. THE EXISTING STRUCTURE HAS BEEN REVIEWED AND CAN SUPPORT ALL NEW LOADING IN ACCORDANCE WITH PART 4 OF THE 2011 MBC.
7. THE DESIGN LOADS FOR GUARDRAILS ARE AS FOLLOWS:
 - 7.1 A HORIZONTAL LOAD OF 1kN AT ANY POINT ON THE GUARDRAIL.
 - 7.2 VERTICAL LOAD: 1.5 kN/m AT TOP OF GUARD BUT NOT SIMULTANEOUSLY WITH HORIZONTAL LOAD.
8. GUARDRAIL SHALL CONFORM TO OSHA REGULATIONS:
 - 29 CFR 1910.23
 - 29 CFR 1926.502

METAL FABRICATIONS:

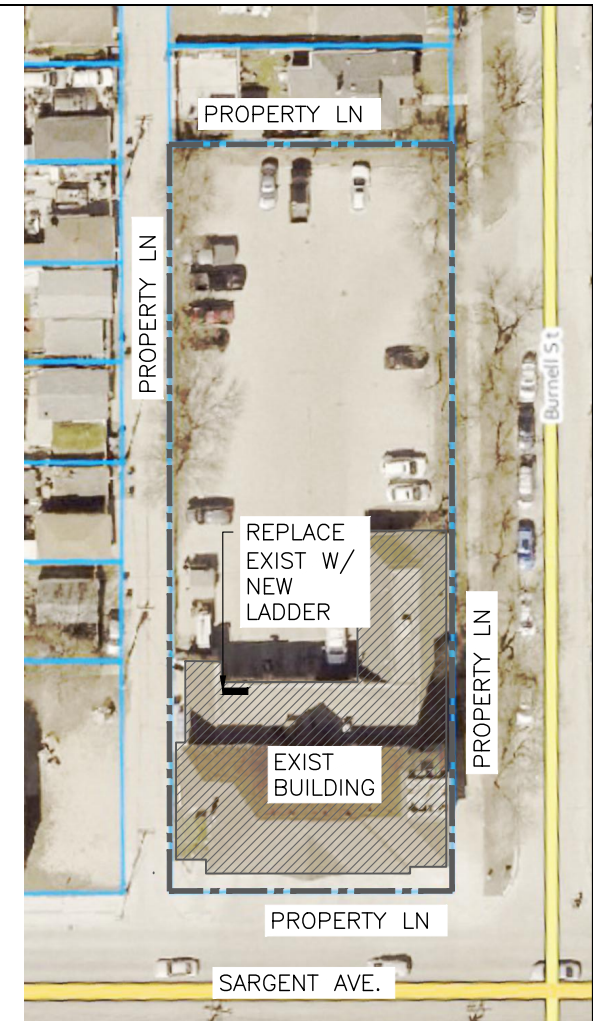
1. PROVIDE SHOP DRAWINGS FOR APPROVAL PRIOR TO CONSTRUCTION.
2. MATERIAL: (GALVANIZED)
3. WELDING: STEEL TO CSA W59-M1989,
4. STEEL SECTIONS AND PLATES: TO CAN3 G40.21-92 GRADE 300 W.
5. STEEL PIPE: TO ASTM A53.
6. BOLTS AND ANCHOR BOLTS: TO ASTM A307-76B FOR STEEL
7. GRATING: SERRATED TREAD BY FISHER LUDLOW OR APPROVED EQL.

SELECTIVE DEMOLITION:

1. REMOVE ITEMS AND MATERIALS WHERE SHOWN ON DRAWINGS. REMOVE ONLY MATERIALS REQUIRED TO ACCOMMODATE NEW CONSTRUCTION.
2. PROTECT WORK TO REMAIN.

MODULAR GUARDRAIL SYSTEM:

1. PROVIDE SHOP DRAWINGS FOR REVIEW UNDER THE SEAL OF A PROFESSIONAL ENGINEER REGISTERED IN THE PROVINCE OF MANITOBA PRIOR TO INSTALLATION.





 1 SITE PLAN-845 SARGENT
 SCALE: 1/64"=1'-0"

ISSUED FOR CONSTRUCTION

NEW ROOF ACCESS FIXED LADDER 845 SARGENT WINNIPEG MANITOBA R3E 0C3	 CHARLESON Engineering Ltd STRUCTURAL CONSULTANTS	103B-1479 BUFFALO PLACE WINNIPEG, MB R3T 1L7 PHONE NO : 204-895-1474 EMAIL: KEN@CHARLESONENG.CA		DESIGNED BY: KC	PROJECT #: 22110
		DRAWN BY: AMD	DATE: JUNE 22,2023		
		REVIEWED BY: KC	SCALE: AS SHOWN	S200	