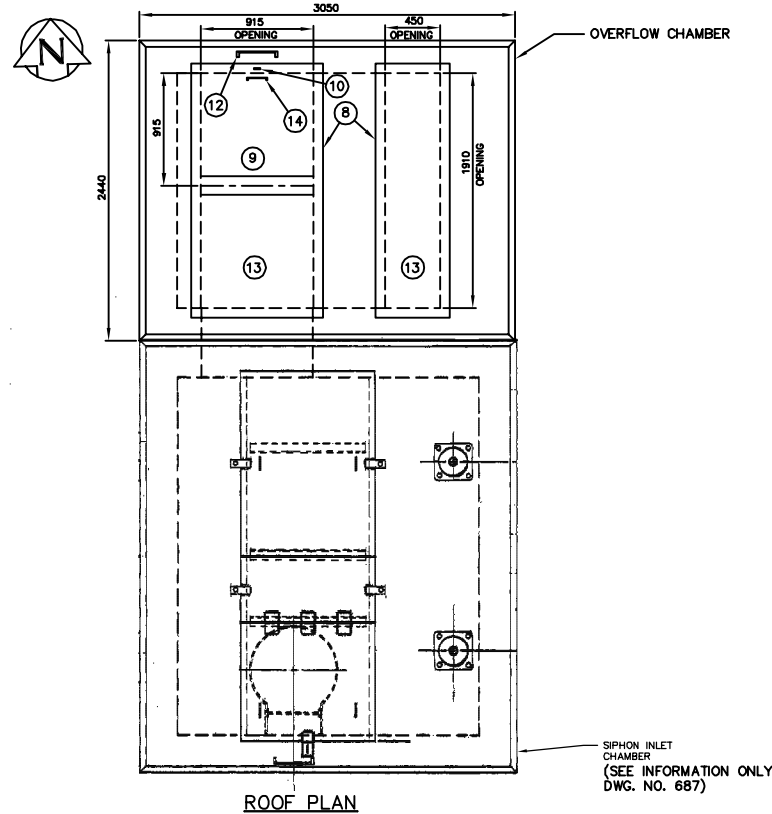


LIST OF MATERIALS

NO.	DESCRIPTION	LENGTH	QUANTITY
1.	900X900 STAINLESS STEEL SLUICE GATE FONTAINE SERIES 20 MODEL 204 C/W MODEL F-2 STAINLESS STEEL WALL THIMBLE		1
2.	900# ARMTEC MODEL 20C CI FLAP GATE WITH BRONZE SEATING FACES		1
3.	900# CI ROUND FLANGE ROUND OPENING ARMTEC TYPE "F" WALL THIMBLE		1
4.	FABRICATED GALVANIZED STEEL LADDER (RUNGS @ 300 O.C.)	7785	1
5.	STAINLESS STEEL STEM GUIDE C/W UHMWPE BUSHING		AS REQ'D
6.	SOLID ROUND STAINLESS STEEL VALVE STEM	AS REQ'D	1
7.	PEDESTAL MOUNTED GATE OPERATOR C/W STEM COVER AND POSITION INDICATOR (FONTAINE TYPE MNEP)		1
8.	ALUMINUM ANGLE EXTRUSION (DIE #670826) FRAME C/W CONC. ANCHORS @ 300 O.C.	AS REQ'D	2
9.	10 THICK ALUMINUM TREAD PLATE COVER C/W 3 THICK X 32 WIDE NEOPRENE GASKET BONDED TO ANGLE FRAME	AS REQ'D	1
10.	50 X 38 X 10 ALUMINUM BAR C/W 15# HOLE FOR PADLOCK		1
11.	100 X 64 X 6 ALUMINUM SUPPORT CHANNEL	915	1
12.	19# CONTINUOUS ALUMINUM HINGE C/W 10# REMOVABLE STAINLESS STEEL PIN	1005	1
13.	10 THICK ALUMINUM TREAD PLATE COVER C/W 3 THICK X 32 WIDE NEOPRENE GASKET BONDED TO ANGLE FRAME AND 8# X 20 LONG FLAT HEAD SCREWS @ 450 O.C. MAX. 12# ALUMINUM ROD LIFTING HANDLE FABRICATED ALUMINUM HANDHOLD C/W 12# X 140 LONG ANCHOR BOLTS FABRICATED STEEL LADDER	AS REQ'D	2 1 1 1 1

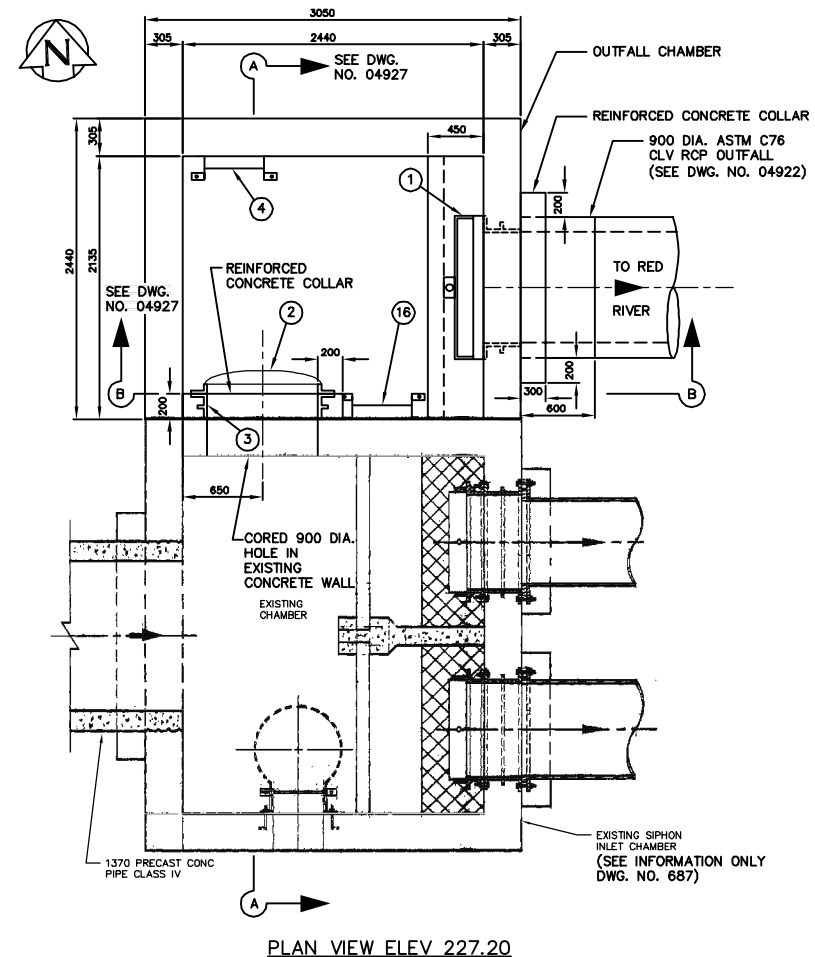
NOTES:

- SEE DRAWING 04920 FOR CHAMBER LOCATION
- ALL ALUMINUM MATERIAL 6351-T6
- ALL ALUMINUM SURFACES IN CONTACT WITH CONCRETE TREATED WITH TWO COATS OF ALKALI RESISTANT BITUMINOUS PAINT
- ALL UNIDENTIFIED NUTS, BOLTS AND ANCHORS TYPE 316 STAINLESS STEEL



ROOF PLAN

SIPHON INLET CHAMBER
(SEE INFORMATION ONLY
DWG. NO. 687)



PLAN VIEW ELEV 227.20

THIS DRAWING CONTAINS
A RASTER IMAGE
FILENAME:
04926_687SEC.tif

CONTRACTOR: NELSON RIVER CONSTRUCTION
PROJECT COMPLETION DATE: 2004 01 01

RECORD DRAWING
WATER AND WASTE DEPARTMENT

B.M. ELEV.	FIELD BOOK #:	CITY OF WINNIPEG WATER AND WASTE ENGINEERING DIVISION		ENGINEER'S SEAL	THE CITY OF WINNIPEG WATER AND WASTE DEPARTMENT D'ARCY WASTEWATER PUMPING STATION BUILDING, GATE CHAMBER MODIFICATIONS, OUTFALL, AND SITE GRADING OUTFALL CHAMBER PLAN VIEWS	SHEET 7 OF 11
POSTED TO LBIS				DESIGNED BY TW		CHECKED BY TW
		DRAWN BY WKT	APPROVED BY	TENDER NO. 0695-2001 AUTOCADR2000: 04926.dwg PLOT DATE: 2008 06 03		
		HOR. SCALE 1:30	RELEASED FOR CONSTRUCTION			
1	REVISED TO RECORD DWG.	08.04.14	CJH			
NO.	REVISIONS	DATE	BY	DATE	2001 08 16	DATE