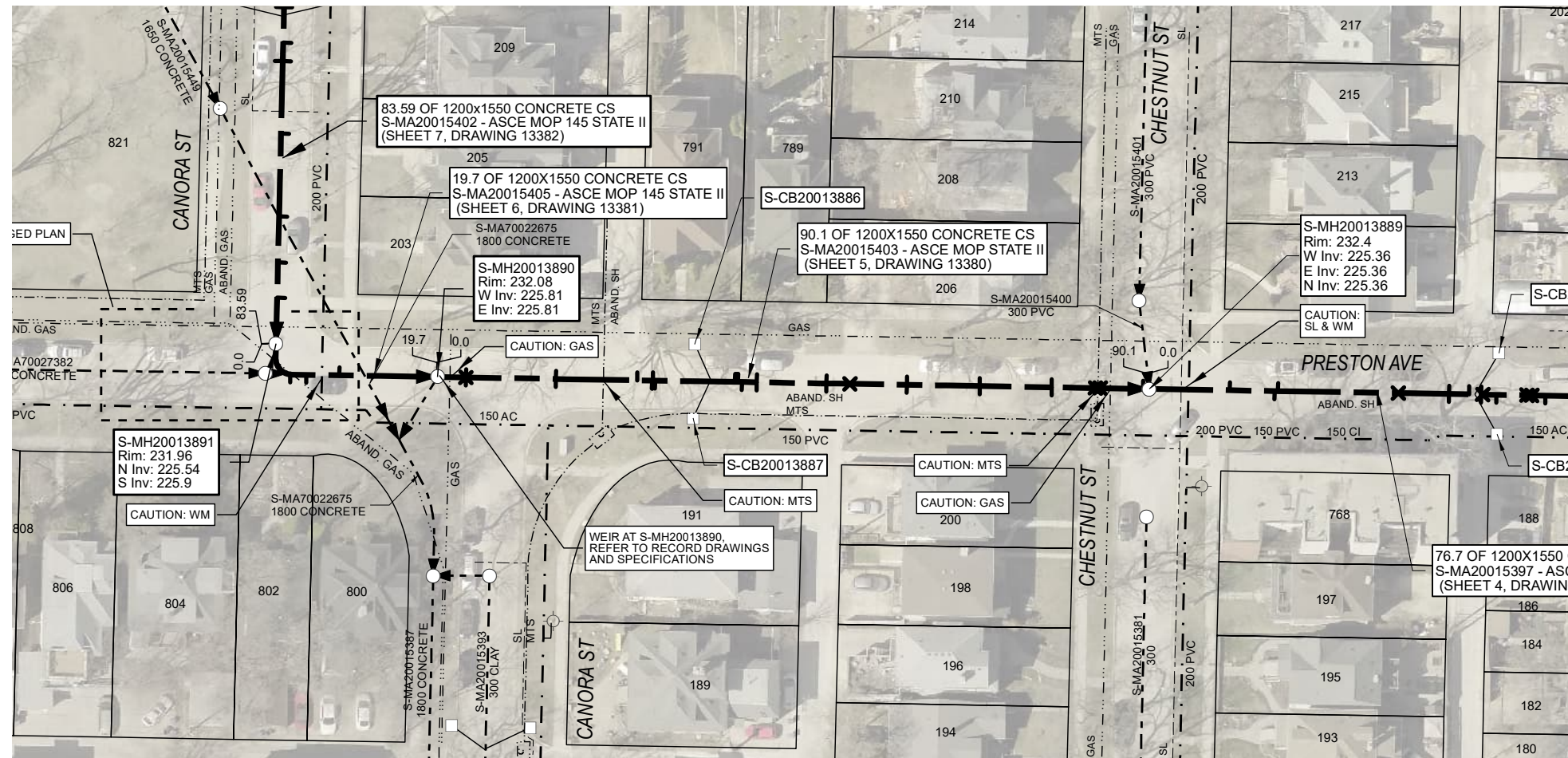




SEWER JUNCTION INFORMATION FROM SEWER VIDEO INSPECTION			
SEWER ID S-MA20015403			
Reference MH	Distance	DIA	Clock
S-MH20013890	003.6	100	12
-	003.6	100	01
-	003.6	100	11
-	015.1	100	10
-	015.1	100	02
-	025.5	100	10
-	027.4	050	01
-	027.5	100	02
-	027.5	100	10
-	027.8	100	01
-	038.0	100	11
-	038.2	200	10
-	038.4	300	10
-	038.9	200	02
-	040.8	100	10
-	040.8	100	02
-	049.7	100	02
-	049.7	100	10
-	052.7	100	12
-	060.0	100	02
-	060.0	100	10
-	069.3	100	02
-	069.3	100	10
-	078.5	100	02
-	078.5	100	10
-	084.1	100	12
-	084.7	100	12
-	090.2	400	09



Traffic Controls
 Regional Street Lane Closure Required: No
 Impacted Regional St: N/A

General Requirements:
 Residential Street Restrictions

ENGINEERS GEOSCIENTISTS MANITOBA
 Certificate of Authorization
 AECOM Canada Ltd.
 No. 4671 Date: 23/09/06

WARNING
 IF POWER EQUIPMENT OR EXPLOSIVES ARE TO BE USED FOR EXCAVATION ON THIS PROJECT, THE CONTRACTOR MUST:
 1) NOTIFY THE GAS COMPANY OF THE PROPOSED LOCATION OF EXCAVATION.
 2) TAKE PRECAUTION TO AVOID DAMAGE TO GAS COMPANY INSTALLATIONS.
 SEE PROVINCIAL REGULATION 140/92 FOR DETAILS

FOR INDEX SEE 13377

METRIC
 WHOLE NUMBERS INDICATE MILLIMETRES
 DECIMALIZED NUMBERS INDICATE METRES
 0 2.5 5 10 15 20 Metres

AECOM REVIEW	DRFT CHK	Saved By:	LOCATION APPROVED UNDERGROUND STRUCTURES			
			SUPR. U/G STRUCTURES	DATE	COMMITTEE	
NOTE: LOCATION OF UNDERGROUND STRUCTURES AS SHOWN ARE BASED ON THE BEST INFORMATION AVAILABLE. BUT NO GUARANTEE IS GIVEN THAT ALL EXISTING UTILITIES ARE SHOWN OR THAT THE GIVEN LOCATIONS ARE EXACT. CONFIRMATION OF EXISTENCE AND EXACT LOCATION OF ALL SERVICES MUST BE OBTAINED FROM THE INDIVIDUAL UTILITIES BEFORE PROCEEDING WITH CONSTRUCTION.						
			0	ISSUED FOR TENDER	23/09/06	ES
			NO.	REVISIONS	YY/MM/DD	BY

AECOM

DESIGNED BY	TB	CHECKED BY	CM
DRAWN BY	ES	APPROVED BY	CM
HOR. SCALE	1:750	RELEASED FOR CONSTRUCTION	
VERT. SCALE	N/A		
DATE	23-09-24		

PROFESSIONAL'S SEAL

CONSULTANT DRAWING NO. 60703774_2023 Lining-R0.mxd

THE CITY OF WINNIPEG WATER AND WASTE DEPARTMENT

2023 SEWER RENEWALS BY CIPP LINING
 CONTRACT 6
 S-MA20015403
 PRESTON AVE
 PRESTON AVE TO MH AT CANORA ST(W.LEG) TO MH AT CANORA ST(E.LEG)

SHEET 5 OF 8
 CITY DRAWING NUMBER 13380 REV 0