

# **APPENDIX 'B'**

## **PHASING & SIGNAGE PLAN**

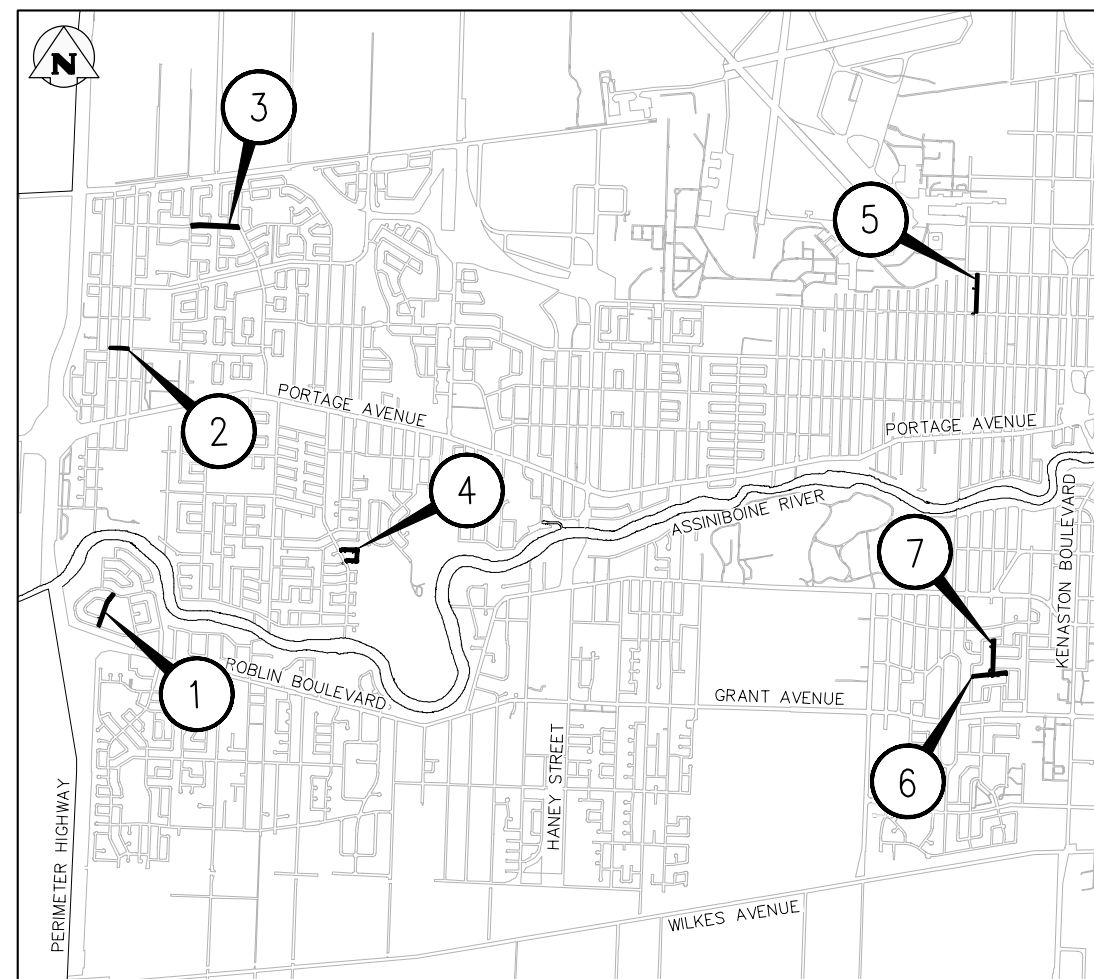
# THE CITY OF WINNIPEG

## PUBLIC WORKS DEPARTMENT ENGINEERING SERVICES DIVISION

### TENDER NO. 66-2023

## 2023 LOCAL STREET RENEWALS: HOLDSWORTH AVENUE AND VARIOUS OTHER LOCATIONS

## PHASING & SIGNAGE PLAN



SITE LOCATION PLAN

PHASING & SIGNAGE PLAN INDEX

CONSULTANT DRAWING #	SHEET #	SITE #	TITLE
F-0000	1		MAP & LEGEND
F-0101	2	1	SINNOTT ST: MINOR REHABILITATION - PHASE 1 & 2
F-0201	3	2	FAIRLANE AVE: MAJOR REHABILITATION - PHASE 1 & 2
F-0301	4	3	LUMSDEN AVE: MAJOR REHABILITATION - PHASE 1
F-0302	5	3	LUMSDEN AVE: MAJOR REHABILITATION - PHASE 2
F-0401	6	4	CARLYLE BAY: MINOR REHABILITATION - PHASE 1
F-0402	7	4	CARLYLE BAY: MINOR REHABILITATION - PHASE 2
F-0501	8	5	COLLEGIATE ST: MINOR REHABILITATION - FULL CLOSURE
F-0601	9		HOLDSWORTH AVE: WATER MAIN RENEWAL - PHASE 1
F-0602	10	6	HOLDSWORTH AVE: MINOR REHABILITATION - PHASE 2A
F-0603	11	6	HOLDSWORTH AVE: MINOR REHABILITATION - PHASE 2B & 3
F-0701	12	7	EXMOUTH AVE: MINOR REHABILITATION - PHASE 4 & 5

GENERAL NOTES:

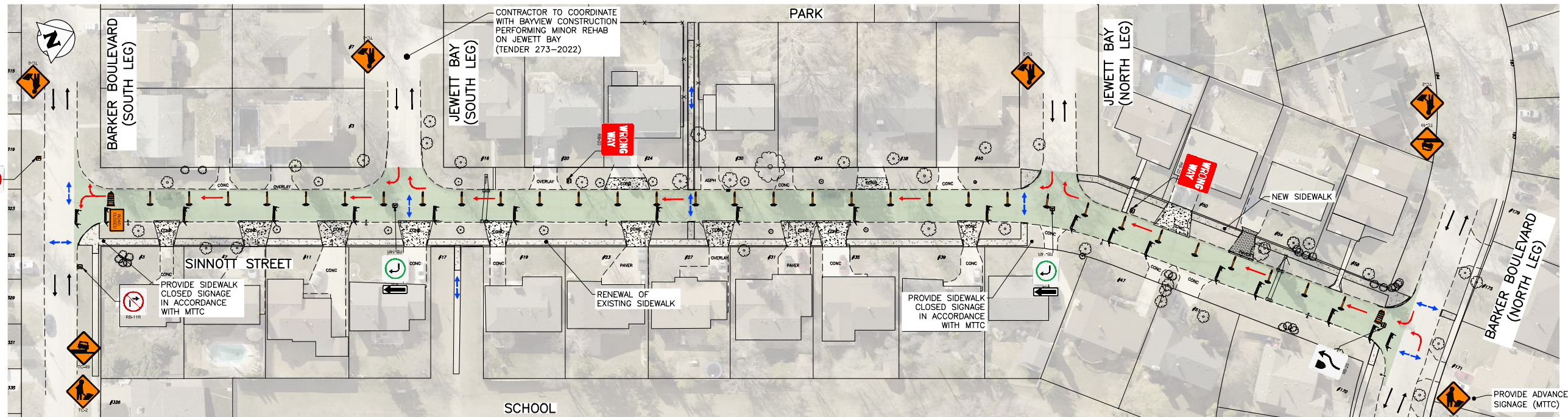
- ALL TEMPORARY TRAFFIC CONTROL TO BE IN ACCORDANCE WITH THE LATEST MANUAL OF TEMPORARY TRAFFIC CONTROL ON CITY STREETS (MTTC) AT TENDER.
- PERFORM WORK IN PHASES & STAGES TO MINIMIZE IMPACT TO TRAFFIC FLOW AND ACCESS TO RESIDENCES.
- NOT ALL REQUIRED SIGNAGE IS SHOWN FOR EACH PHASE & SUB-PHASE. ADDITIONAL SIGNAGE TO PROVIDED IN ACCORDANCE WITH THE MTTC.
- THE PERMANENT POSTED SPEED LIMIT OF 50 KM/HR SHALL BE USED FOR ALL TAPER LENGTHS AND OTHER CRITERIA IN THE MTTC.
- CONTRACTOR SHALL SUBMIT THE PEDESTRIAN ACCESSIBILITY PLAN FOR REVIEW & ACCEPTANCE BY THE CONTRACT ADMINISTRATOR.
- CONTRACTOR SHALL BE RESPONSIBLE FOR ALL PERMITS, & THE SUPPLY, PLACEMENT & MAINTENANCE OF ALL TEMPORARY TRAFFIC CONTROL SIGNAGE IN ACCORDANCE WITH THE TENDER.
- ALL LANE CLOSURE REQUESTS MUST BE SUBMITTED THROUGH THE CONTRACT ADMINISTRATOR & ARE SUBJECT TO THE APPROVAL OF THE TRAFFIC MANAGEMENT BRANCH.
- CONTRACTOR TO PROVIDE FLAGPERSONS IN ACCORDANCE WITH THE MTTC WHEN MOVING MATERIALS OR EQUIPMENT INTO OR OUT OF TRAFFIC.
- CONTRACTOR SHALL PROVIDE FLAGPERSONS DURING ALL ASPHALT PLACEMENT AT THE PROJECT LIMITS TO MINIMIZE IMPACT TO TRAFFIC.
- WHEN FLAGPERSONS ARE PRESENT, FLAGPERSON SIGNAGE MUST BE PLACED IN ACCORDANCE WITH THE MTTC.
- WHEN FLAGPERSONS ARE NOT PRESENT, THE FLAGPERSON SIGNAGE MUST BE REMOVED OR HIDDEN.
- PROVIDE TEMPORARY RAMPS & CROSSING WHERE DIRECTED BY CONTRACT ADMINISTRATOR & IN ACCORDANCE WITH THE ACCESSIBILITY PLAN FOR PEDESTRIAN CROSSINGS WHILE PERFORMING WORK IN THE INTERSECTIONS AND APPROACHES.
- INSTALL WARNING FLAGS IN ACCORDANCE WITH MTTC 3.07.04 ON THE FIRST WARNING SIGN IN EACH LANE DROP TAPER.
- WHERE A LANE IS REQUIRED TO BE CLOSED ON MAJOR INTERSECTING STREETS PERFORM THE WORK ON THE TIE-IN DURING OFF PEAK-HOURS.
- TEMPORARY TRANSIT LANDINGS WILL BE REQUIRED FOR ANY TEMPORARY TRANSIT STOP RELOCATIONS IN ACCORDANCE WITH THE MTTC.
- CONTRACTOR TO MONITOR & MAINTAIN THE TEMPORARY SIGNAGE FOR THE DURATION OF THE PROJECT & MODIFY AS NEEDED FOR EACH STAGE OF THE WORKS.
- CONTRACTOR TO REMEDY ANY SIGNAGE DEEMED INSUFFICIENT OR INCORRECT AS DIRECTED BY THE CONTRACT ADMINISTRATOR OR TRAFFIC MANAGEMENT.
- STAGE SIDEWALK WORK SUCH THAT PEDESTRIAN ACCESS IS MAINTAINED ALONG ONE SIDE OF EACH ROADWAY AT ALL TIMES.
- PROVIDE ADVANCED CONSTRUCTION & SIDEWALK CLOSED/DETOUR SIGNAGE IN ACCORDANCE WITH THE MTTC. PROVIDE SMALL CONES IN CENTRE WHERE BARRICADES .GUIDE PEDESTRIANS THROUGH THE CONSTRUCTION ZONE.

- WARNING FLAGS
- REFLECTORIZED BARRICADE
- CHANNELIZATION BARREL
- TALL CONE
- PEDESTRIANS
- TEMPORARY TRAFFIC FLOW
- NORMAL TRAFFIC FLOW

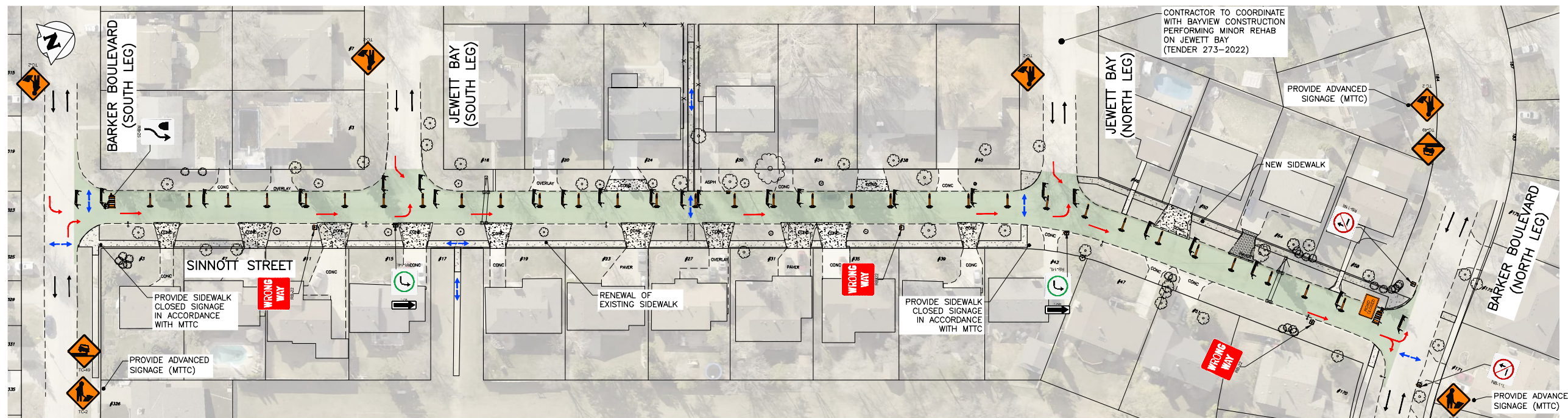
TENDER NO. 66-2023

	THE CITY OF WINNIPEG PUBLIC WORKS DEPARTMENT ENGINEERING DIVISION	
	PROJECT TITLE 2023 LOCAL STREET RENEWALS: HOLDSWORTH AVE & VARIOUS LOCATIONS	
PHASING & SIGNAGE PLAN: MAP & LEGEND		SHEET 1 OF 12 COMPUTER FILE NAME 22-0107-009 FIGURE F-0000

NO.	REVISIONS	DATE	BY
B	ISSUED FOR REVIEW	23/04/05	GES
A	ISSUED FOR REVIEW	23/03/20	GES



**STAGING & SIGNAGE: PHASE 1: NORTHBOUND (RHS LANES)**  
SCALE: NTS



**STAGING & SIGNAGE: PHASE 2 – SOUTHBOUND (LHS LANES)**  
SCALE: NTS

PEDESTRIANS  
 TEMPORARY TRAFFIC FLOW

**GENERAL NOTES:**

- ALL TEMPORARY TRAFFIC CONTROL TO BE IN ACCORDANCE WITH THE LATEST MANUAL OF TEMPORARY TRAFFIC CONTROL ON CITY STREETS (MITC) AT TENDER.
- PERFORM WORK IN PHASES & STAGES TO MINIMIZE IMPACT TO TRAFFIC FLOW AND ACCESS TO RESIDENCES.
- NOT ALL REQUIRED SIGNAGE IS SHOWN FOR EACH PHASE & SUB-PHASE. ADDITIONAL SIGNAGE TO PROVIDED IN ACCORDANCE WITH THE MITC.
- THE PERMANENT POSTED SPEED LIMIT OF 50 KM/HR SHALL BE USED FOR ALL TAPER LENGTHS AND OTHER CRITERIA IN THE MITC.
- CONTRACTOR SHALL SUBMIT THE PEDESTRIAN ACCESSIBILITY PLAN FOR REVIEW & ACCEPTANCE BY THE CONTRACT ADMINISTRATOR.
- CONTRACTOR SHALL BE RESPONSIBLE FOR ALL PERMITS, & THE SUPPLY, PLACEMENT & MAINTENANCE OF ALL TEMPORARY TRAFFIC CONTROL SIGNAGE IN ACCORDANCE WITH THE TENDER.
- ALL LANE CLOSURE REQUESTS MUST BE SUBMITTED THROUGH THE CONTRACT ADMINISTRATOR & ARE SUBJECT TO THE APPROVAL OF THE TRAFFIC MANAGEMENT BRANCH.
- CONTRACTOR TO PROVIDE FLAGPERSONS IN ACCORDANCE WITH THE MITC WHEN MOVING MATERIALS OR EQUIPMENT INTO OR OUT OF TRAFFIC.
- CONTRACTOR SHALL PROVIDE FLAGPERSONS DURING ALL ASPHALT PLACEMENT AT THE PROJECT LIMITS TO MINIMIZE IMPACT TO TRAFFIC.
- WHEN FLAGPERSONS ARE PRESENT, FLAGPERSON SIGNAGE MUST BE PLACED IN ACCORDANCE WITH THE MITC.
- WHEN FLAGPERSONS ARE NOT PRESENT, THE FLAGPERSON SIGNAGE MUST BE REMOVED OR HIDDEN.
- PROVIDE TEMPORARY RAMPS & CROSSING WHERE DIRECTED BY CONTRACT ADMINISTRATOR & IN ACCORDANCE WITH THE ACCESSIBILITY PLAN FOR PEDESTRIAN CROSSINGS WHILE PERFORMING WORK IN THE INTERSECTIONS AND APPROACHES.
- INSTALL WARNING FLAGS IN ACCORDANCE WITH MITC 3.07.04 ON THE FIRST WARNING SIGN IN EACH LANE DROP TAPER.
- WHERE A LANE IS REQUIRED TO BE CLOSED ON MAJOR INTERSECTING STREETS PERFORM THE WORK ON THE TIE-IN DURING OFF PEAK-HOURS.
- TEMPORARY TRANSIT LANDINGS WILL BE REQUIRED FOR ANY TEMPORARY TRANSIT STOP RELOCATIONS IN ACCORDANCE WITH THE MITC.
- CONTRACTOR TO MONITOR & MAINTAIN THE TEMPORARY SIGNAGE FOR THE DURATION OF THE PROJECT & MODIFY AS NEEDED FOR EACH STAGE OF THE WORKS.
- CONTRACTOR TO REMEDY ANY SIGNAGE DEEMED INSUFFICIENT OR INCORRECT AS DIRECTED BY THE CONTRACT ADMINISTRATOR OR TRAFFIC MANAGEMENT.
- STAGE SIDEWALK WORK SUCH THAT PEDESTRIAN ACCESS IS MAINTAINED ALONG ONE SIDE OF EACH ROADWAY AT ALL TIMES.
- PROVIDE ADVANCED CONSTRUCTION & SIDEWALK CLOSED/DETOUR SIGNAGE IN ACCORDANCE WITH THE MITC. PROVIDE SMALL CONES IN CENTRE WHERE BARRICADES GUIDE PEDESTRIANS THROUGH THE CONSTRUCTION ZONE.

**TRAFFIC MANAGEMENT: SINNOTT MINOR REHABILITATION**

- PERFORM WORK LANE-AT-A-TIME IN TWO PHASES.
- MAINTAIN NORMAL TRAFFIC DIRECTIONS FOR EACH PHASE.
- DURING PHASE 1 MAINTAIN SOUTHBOUND TRAFFIC FLOW.
- DURING PHASE 2 MAINTAIN NORTHBOUND TRAFFIC FLOW.
- MAINTAIN ACCESS TO AT LEAST ONE LEG OF JEWETT BAY AT ALL TIMES.
- MINIMIZE DURATION THAT EITHER INTERSECTION OF SINNOTT & JEWETT IS CLOSED TO REDUCE IMPACT TO TRAFFIC.
- SEE MITC FIGURE 27.

TENDER NO. 66-2023

**PROPERTY LIMITS DELINEATION**

DELINEATION OF PROPERTY LIMITS AS SHOWN ON THIS DWG DOES NOT REPRESENT A "LEGAL SURVEY". KGS GROUP MAKES NO REPRESENTATION OR WARRANTY AS TO THE ACCURACY OF PROPERTY LIMITS DELINEATED ON THIS DWG, NOR ON THE DIMENSIONAL ACCURACY OF DWG FEATURES RELATIVE TO THOSE PROPERTY LIMITS.

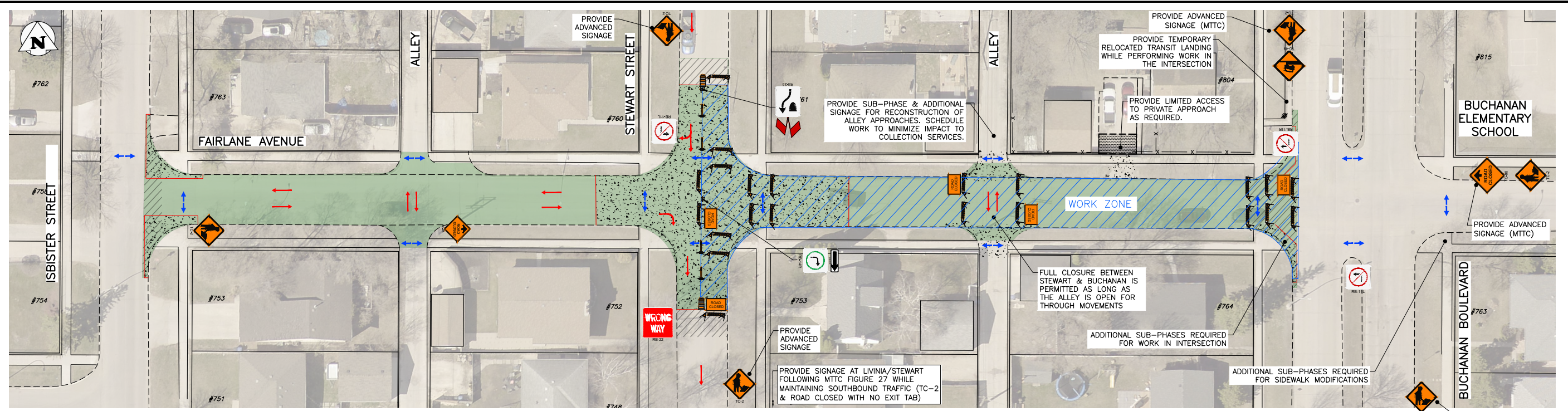
**METRIC**

WHOLE NUMBERS INDICATE MILLIMETRES  
DECIMALIZED NUMBERS INDICATE METRES

<b>THE CITY OF WINNIPEG</b> PUBLIC WORKS DEPARTMENT ENGINEERING DIVISION		
PROJECT TITLE		SHEET OF
2023 LOCAL STREET RENEWALS: HOLDSWORTH AVE & VARIOUS LOCATIONS		2 12
PHASING & SIGNAGE PLAN: SINNOTT ST: MINOR REHABILITATION PHASE 1 & 2		COMPUTER FILE NAME
		22-0107-009
		FIGURE
		F-0101

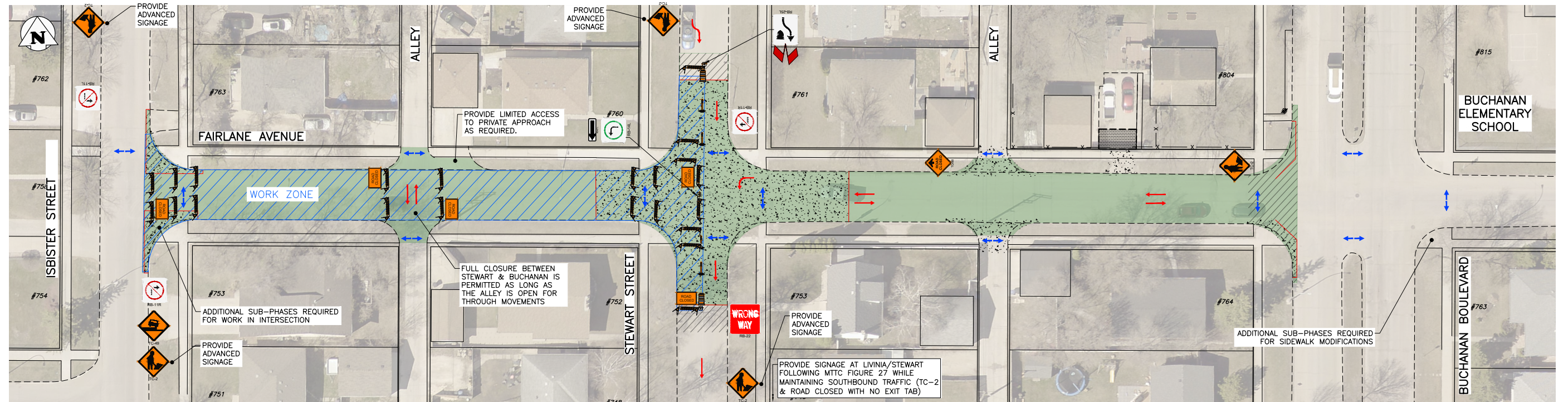
NO.	REVISIONS	DATE	BY
B	ISSUED FOR REVIEW	23/04/05	GES
A	ISSUED FOR REVIEW	23/03/20	GES

Filepath: C:\Users\jgibson\OneDrive\Desktop\FMS\22-0107-009\22-0107-009\_C1\_F-ALL\_Signage Figures - TabF-0101 Plotted By: GSmallley 23/04/05 [Wed 4:51pm]  
 All rights reserved.



**STAGING & SIGNAGE: PHASE 1: NORTHBOUND (RHS LANES)**

SCALE: NTS



**STAGING & SIGNAGE: PHASE 2 - SOUTHBOUND (LHS LANES)**

SCALE: NTS

**GENERAL NOTES:**

1. ALL TEMPORARY TRAFFIC CONTROL TO BE IN ACCORDANCE WITH THE LATEST MANUAL OF TEMPORARY TRAFFIC CONTROL ON CITY STREETS (MTTC) AT TENDER.
2. PERFORM WORK IN PHASES & STAGES TO MINIMIZE IMPACT TO TRAFFIC FLOW AND ACCESS TO RESIDENCES.
3. NOT ALL REQUIRED SIGNAGE IS SHOWN FOR EACH PHASE & SUB-PHASE. ADDITIONAL SIGNAGE TO PROVIDED IN ACCORDANCE WITH THE MTTC.
4. THE PERMANENT POSTED SPEED LIMIT OF 50 KM/HR SHALL BE USED FOR ALL TAPER LENGTHS AND OTHER CRITERIA IN THE MTTC.
5. CONTRACTOR SHALL SUBMIT THE PEDESTRIAN ACCESSIBILITY PLAN FOR REVIEW & ACCEPTANCE BY THE CONTRACT ADMINISTRATOR.
6. CONTRACTOR SHALL BE RESPONSIBLE FOR ALL PERMITS, & THE SUPPLY, PLACEMENT & MAINTENANCE OF ALL TEMPORARY TRAFFIC CONTROL SIGNAGE IN ACCORDANCE WITH THE TENDER.
7. ALL LANE CLOSURE REQUESTS MUST BE SUBMITTED THROUGH THE CONTRACT ADMINISTRATOR & ARE SUBJECT TO THE APPROVAL OF THE TRAFFIC MANAGEMENT BRANCH.
8. CONTRACTOR TO PROVIDE FLAGPERSONS IN ACCORDANCE WITH THE MTTC WHEN MOVING MATERIALS OR EQUIPMENT INTO OR OUT OF TRAFFIC.
9. CONTRACTOR SHALL PROVIDE FLAGPERSONS DURING ALL ASPHALT PLACEMENT AT THE PROJECT LIMITS TO MINIMIZE IMPACT TO TRAFFIC.
10. WHEN FLAGPERSONS ARE PRESENT, FLAGPERSON SIGNAGE MUST BE PLACED IN ACCORDANCE WITH THE MTTC.

11. EACH FLAGPERSONS ARE NOT PRESENT, THE FLAGPERSON SIGNAGE MUST BE REMOVED OR HIDDEN.
12. PROVIDE TEMPORARY RAMPS & CROSSING WHERE DIRECTED BY CONTRACT ADMINISTRATOR & IN ACCORDANCE WITH THE ACCESSIBILITY PLAN FOR PEDESTRIAN CROSSINGS WHILE PERFORMING WORK IN THE INTERSECTIONS AND APPROACHES.
13. INSTALL WARNING FLAGS IN ACCORDANCE WITH MTTC 3.07.04 ON THE FIRST WARNING SIGN IN EACH LANE DROP TAPER.
14. WHERE A LANE IS REQUIRED TO BE CLOSED ON MAJOR INTERSECTING STREETS PERFORM THE WORK ON THE TIE-IN DURING OFF PEAK-HOURS.
15. TEMPORARY TRANSIT LANDINGS WILL BE REQUIRED FOR ANY TEMPORARY TRANSIT STOP RELOCATIONS IN ACCORDANCE WITH THE MTTC.
16. CONTRACTOR TO MONITOR & MAINTAIN THE TEMPORARY SIGNAGE FOR THE DURATION OF THE PROJECT & MODIFY AS NEEDED FOR EACH STAGE OF THE WORKS.
17. CONTRACTOR TO REMEDY ANY SIGNAGE DEEMED INSUFFICIENT OR INCORRECT AS DIRECTED BY THE CONTRACT ADMINISTRATOR OR TRAFFIC MANAGEMENT.
18. STAGE SIDEWALK WORK SUCH THAT PEDESTRIAN ACCESS IS MAINTAINED ALONG ONE SIDE OF EACH ROADWAY AT ALL TIMES.
19. PROVIDE ADVANCED CONSTRUCTION & SIDEWALK CLOSED/DETOUR SIGNAGE IN ACCORDANCE WITH THE MTTC. PROVIDE SMALL CONES IN CENTRE WHERE BARRICADES GUIDE PEDESTRIANS THROUGH THE CONSTRUCTION ZONE.

- ← PEDESTRIANS
- TEMPORARY TRAFFIC FLOW

**PROPERTY LIMITS DELINEATION**

DELINEATION OF PROPERTY LIMITS AS SHOWN ON THIS DWG DOES NOT REPRESENT A "LEGAL SURVEY". KGS GROUP MAKES NO REPRESENTATION OR WARRANTY AS TO THE ACCURACY OF PROPERTY LIMITS DELINEATED ON THIS DWG, NOR ON THE DIMENSIONAL ACCURACY OF DWG FEATURES RELATIVE TO THOSE PROPERTY LIMITS.

**METRIC**

WHOLE NUMBERS INDICATE MILLIMETRES  
DECIMALIZED NUMBERS INDICATE METRES

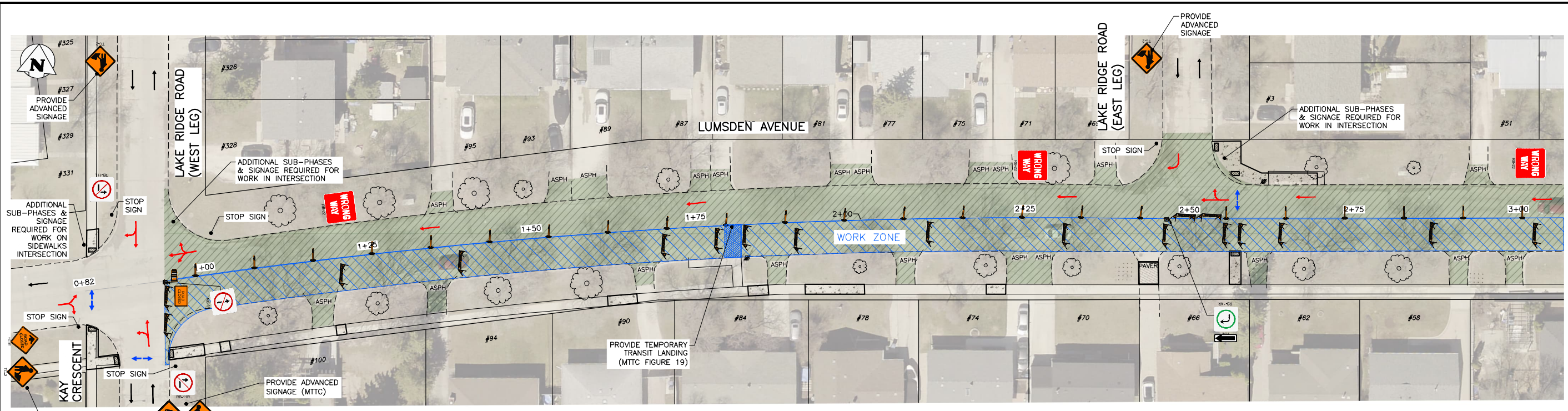
**TRAFFIC MANAGEMENT: FAIRLANE AVE MINOR REHABILITATION**

1. PERFORM WORK LANE-AT-A-TIME ALONG STEWART STREET.
2. PERFORM WORK IN TWO PHASES WITH FULL CLOSURES TO THROUGH TRAFFIC ALONG STEWART.
3. PHASE 1 WILL INCLUDE STEWART STREET'S NORTHBOUND LANE CONCRETE RECONSTRUCTION.
4. PHASE 2 WILL INCLUDE STEWART STREET'S SOUTHBOUND LANE CONCRETE RECONSTRUCTION.
5. MAINTAIN SOUTHBOUND TRAFFIC ALONG STEWART AT ALL TIMES.
6. SCHEDULE ALLEY CLOSURES TO NOT FALL ON COLLECTION DAYS.
7. MAINTAIN TEMPORARY ACCESS FOR PRIVATE APPROACH TO BOTH 760 STEWART STREET & 804 BUCHANAN BOULEVARD.
8. SEE MTTC FIGURE 27 & 28.

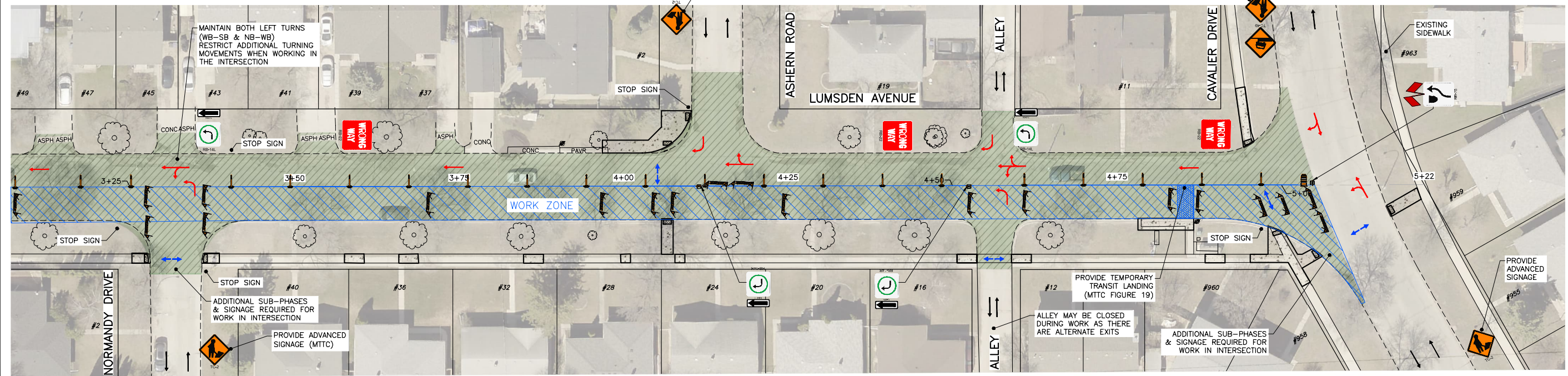
TENDER NO. 66-2023

PROJECT TITLE <b>2023 LOCAL STREET RENEWALS:          HOLDSWORTH AVE &amp; VARIOUS LOCATIONS</b>			
SHEET OF <b>3 12</b>		COMPUTER FILE NAME 22-0107-009	
PHASING & SIGNAGE PLAN: FAIRLANE AVE: MAJOR REHABILITATION PHASE 1 & 2		FIGURE F-0201	

NO.	REVISIONS	DATE	BY
B	ISSUED FOR REVIEW	23/04/09	GES
A	ISSUED FOR REVIEW	23/03/20	GES



**STAGING & SIGNAGE: PHASE 1: EASTBOUND (RHS LANES)**  
SCALE: NTS



**STAGING & SIGNAGE: PHASE 1 - EASTBOUND (RHS LANES)**  
SCALE: NTS

PEDESTRIANS  
 TEMPORARY TRAFFIC FLOW

**PROPERTY LIMITS DELINEATION**  
DELINEATION OF PROPERTY LIMITS AS SHOWN ON THIS DWG DOES NOT REPRESENT A "LEGAL SURVEY". KGS GROUP MAKES NO REPRESENTATION OR WARRANTY AS TO THE ACCURACY OF PROPERTY LIMITS DELINEATED ON THIS DWG, NOR ON THE DIMENSIONAL ACCURACY OF DWG FEATURES RELATIVE TO THOSE PROPERTY LIMITS.

**METRIC**  
WHOLE NUMBERS INDICATE MILLIMETRES  
DECIMALIZED NUMBERS INDICATE METRES

**GENERAL NOTES:**

- ALL TEMPORARY TRAFFIC CONTROL TO BE IN ACCORDANCE WITH THE LATEST MANUAL OF TEMPORARY TRAFFIC CONTROL ON CITY STREETS (MTTC) AT TENDER.
- PERFORM WORK IN PHASES & STAGES TO MINIMIZE IMPACT TO TRAFFIC FLOW AND ACCESS TO RESIDENCES.
- NOT ALL REQUIRED SIGNAGE IS SHOWN FOR EACH PHASE & SUB-PHASE. ADDITIONAL SIGNAGE TO PROVIDED IN ACCORDANCE WITH THE MTTC.
- THE PERMANENT POSTED SPEED LIMIT OF 50 KM/HR SHALL BE USED FOR ALL TAPER LENGTHS AND OTHER CRITERIA IN THE MTTC.
- CONTRACTOR SHALL SUBMIT THE PEDESTRIAN ACCESSIBILITY PLAN FOR REVIEW & ACCEPTANCE BY THE CONTRACT ADMINISTRATOR.
- CONTRACTOR SHALL BE RESPONSIBLE FOR ALL PERMITS, & THE SUPPLY, PLACEMENT & MAINTENANCE OF ALL TEMPORARY TRAFFIC CONTROL SIGNAGE IN ACCORDANCE WITH THE TENDER.
- ALL LANE CLOSURE REQUESTS MUST BE SUBMITTED THROUGH THE CONTRACT ADMINISTRATOR & ARE SUBJECT TO THE APPROVAL OF THE TRAFFIC MANAGEMENT BRANCH.
- CONTRACTOR TO PROVIDE FLAGPERSONS IN ACCORDANCE WITH THE MTTC WHEN MOVING MATERIALS OR EQUIPMENT INTO OR OUT OF TRAFFIC.
- CONTRACTOR SHALL PROVIDE FLAGPERSONS DURING ALL ASPHALT PLACEMENT AT THE PROJECT LIMITS TO MINIMIZE IMPACT TO TRAFFIC.
- WHEN FLAGPERSONS ARE PRESENT, FLAGPERSON SIGNAGE MUST BE PLACED IN ACCORDANCE WITH THE MTTC.

- WHEN FLAGPERSONS ARE NOT PRESENT, THE FLAGPERSON SIGNAGE MUST BE REMOVED OR HIDDEN.
- PROVIDE TEMPORARY RAMPS & CROSSING WHERE DIRECTED BY CONTRACT ADMINISTRATOR & IN ACCORDANCE WITH THE ACCESSIBILITY PLAN FOR PEDESTRIAN CROSSINGS WHILE PERFORMING WORK IN THE INTERSECTIONS AND APPROACHES.
- INSTALL WARNING FLAGS IN ACCORDANCE WITH MTTC 3.07.04 ON THE FIRST WARNING SIGN IN EACH LANE DROP TAPER.
- WHERE A LANE IS REQUIRED TO BE CLOSED ON MAJOR INTERSECTING STREETS PERFORM THE WORK ON THE TIE-IN DURING OFF PEAK-HOURS.
- TEMPORARY TRANSIT LANDINGS WILL BE REQUIRED FOR ANY TEMPORARY TRANSIT STOP RELOCATIONS IN ACCORDANCE WITH THE MTTC.
- CONTRACTOR TO MONITOR & MAINTAIN THE TEMPORARY SIGNAGE FOR THE DURATION OF THE PROJECT & MODIFY AS NEEDED FOR EACH STAGE OF THE WORKS.
- CONTRACTOR TO REMEDY ANY SIGNAGE DEEMED INSUFFICIENT OR INCORRECT AS DIRECTED BY THE CONTRACT ADMINISTRATOR OR TRAFFIC MANAGEMENT.
- STAGE SIDEWALK WORK SUCH THAT PEDESTRIAN ACCESS IS MAINTAINED ALONG ONE SIDE OF EACH ROADWAY AT ALL TIMES.
- PROVIDE ADVANCED CONSTRUCTION & SIDEWALK CLOSED/DETOUR SIGNAGE IN ACCORDANCE WITH THE MTTC. PROVIDE SMALL CONES IN CENTRE WHERE BARRICADES GUIDE PEDESTRIANS THROUGH THE CONSTRUCTION ZONE.

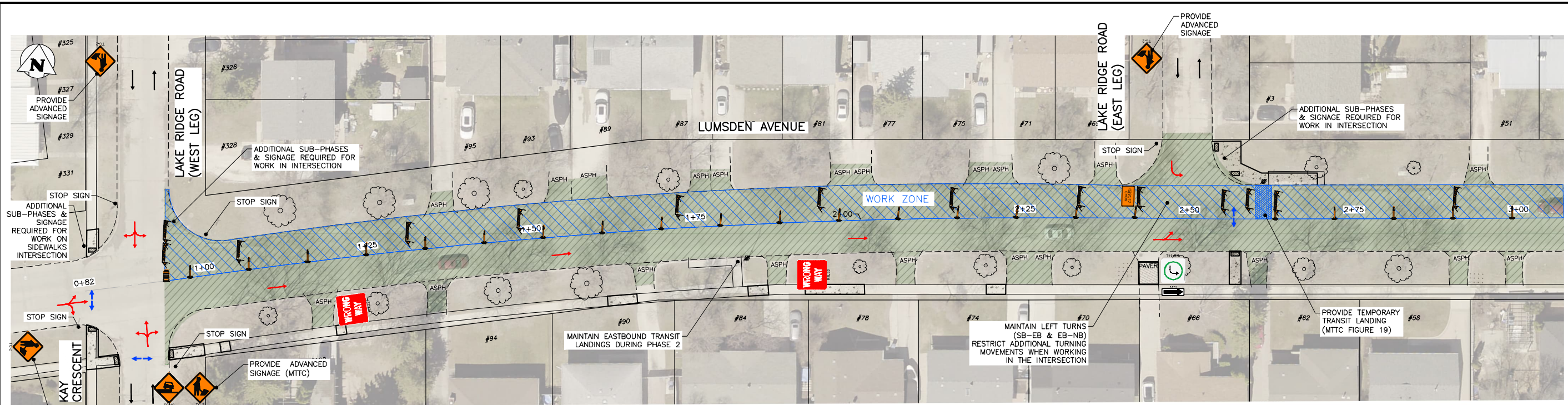
**TRAFFIC MANAGEMENT: LUMSDEN AVE MAJOR REHABILITATION**

- PERFORM WORK LANE-AT-A-TIME IN TWO PHASES. ADDITIONAL SUB-PHASES WILL BE REQUIRED FOR WORK IN INTERSECTIONS.
- MAINTAIN ACCESS TO PRIVATE APPROACHES.
- NOTIFY CONTRACT ADMINISTRATOR OF ANY CLOSURES TO PRIVATE APPROACHES 3 DAYS BEFORE IMPLEMENTING CLOSURE.
- PROVIDE TEMPORARY TRANSIT LANDINGS IN ACCORDANCE WITH THE MTTC - FIGURE 19 FOR TRANSIT LANDINGS.
- MAINTAIN NATURAL TRAFFIC FLOW FOR EACH PHASE.
- PROVIDE ADDITIONAL SIGNAGE FOR WORK IN INTERSECTIONS IN ACCORDANCE WITH THE MTTC.
- PROVIDE ADVANCED SIGNAGE ALONG EACH ADJOINING STREET IN ACCORDANCE WITH THE MTTC.

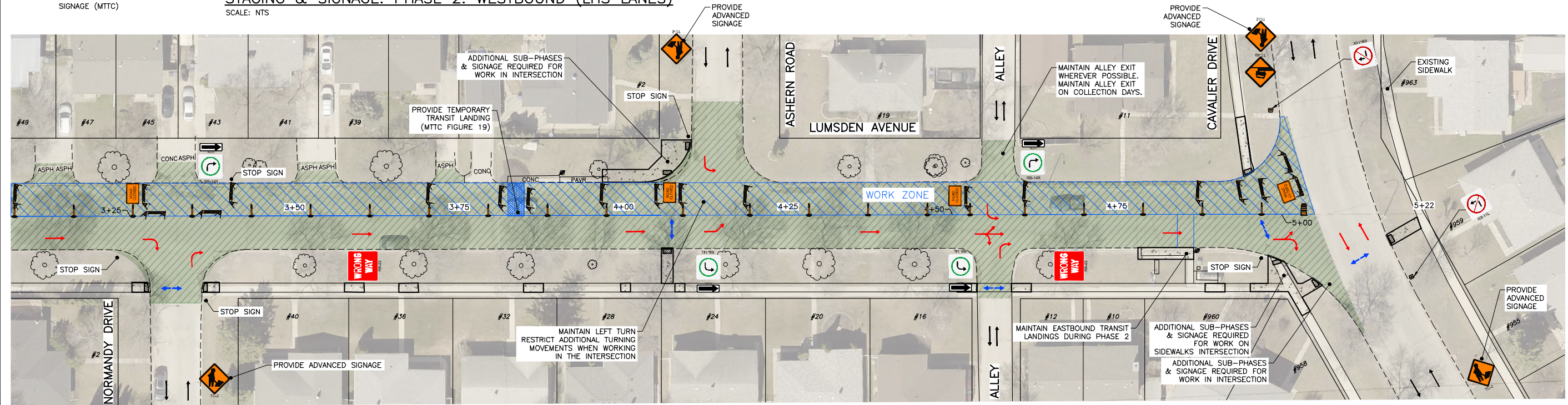
TENDER NO. 66-2023

<b>THE CITY OF WINNIPEG</b> PUBLIC WORKS DEPARTMENT ENGINEERING DIVISION		
PROJECT TITLE 2023 LOCAL STREET RENEWALS: HOLDSWORTH AVE & VARIOUS LOCATIONS		SHEET OF 4 OF 12
PHASING & SIGNAGE PLAN: LUMSDEN AVE: MAJOR REHABILITATION PHASE 1		COMPUTER FILE NAME 22-0107-009 FIGURE F-0301
NO. REVISIONS	DATE	BY

Filepath: C:\Users\GSmalley\Desktop\FMS\22-0107-009\22-0107-009\_C1\_F-ALL\_Signage Figures - TabF-0301 Plotted By: GSmalley 23/04/05 [Wed 4:52pm]



**STAGING & SIGNAGE: PHASE 2: WESTBOUND (LHS LANES)**  
SCALE: NTS



**STAGING & SIGNAGE: PHASE 2 - WESTBOUND (LHS LANES)**  
SCALE: NTS

PEDESTRIANS  
 TEMPORARY TRAFFIC FLOW

**PROPERTY LIMITS DELINEATION**

DELINEATION OF PROPERTY LIMITS AS SHOWN ON THIS DWG DOES NOT REPRESENT A "LEGAL SURVEY". KGS GROUP MAKES NO REPRESENTATION OR WARRANTY AS TO THE ACCURACY OF PROPERTY LIMITS DELINEATED ON THIS DWG, NOR ON THE DIMENSIONAL ACCURACY OF DWG FEATURES RELATIVE TO THOSE PROPERTY LIMITS.

**METRIC**

WHOLE NUMBERS INDICATE MILLIMETRES  
DECIMALIZED NUMBERS INDICATE METRES

**GENERAL NOTES:**

- ALL TEMPORARY TRAFFIC CONTROL TO BE IN ACCORDANCE WITH THE LATEST MANUAL OF TEMPORARY TRAFFIC CONTROL ON CITY STREETS (MTTC) AT TENDER.
- PERFORM WORK IN PHASES & STAGES TO MINIMIZE IMPACT TO TRAFFIC FLOW AND ACCESS TO RESIDENCES.
- NOT ALL REQUIRED SIGNAGE IS SHOWN FOR EACH PHASE & SUB-PHASE. ADDITIONAL SIGNAGE TO PROVIDED IN ACCORDANCE WITH THE MTTC.
- THE PERMANENT POSTED SPEED LIMIT OF 50 KM/HR SHALL BE USED FOR ALL TAPER LENGTHS AND OTHER CRITERIA IN THE MTTC.
- CONTRACTOR SHALL SUBMIT THE PEDESTRIAN ACCESSIBILITY PLAN FOR REVIEW & ACCEPTANCE BY THE CONTRACT ADMINISTRATOR.
- CONTRACTOR SHALL BE RESPONSIBLE FOR ALL PERMITS, & THE SUPPLY, PLACEMENT & MAINTENANCE OF ALL TEMPORARY TRAFFIC CONTROL SIGNAGE IN ACCORDANCE WITH THE TENDER.
- ALL LANE CLOSURE REQUESTS MUST BE SUBMITTED THROUGH THE CONTRACT ADMINISTRATOR & ARE SUBJECT TO THE APPROVAL OF THE TRAFFIC MANAGEMENT BRANCH.
- CONTRACTOR TO PROVIDE FLAGPERSONS IN ACCORDANCE WITH THE MTTC WHEN MOVING MATERIALS OR EQUIPMENT INTO OR OUT OF TRAFFIC.
- CONTRACTOR SHALL PROVIDE FLAGPERSONS DURING ALL ASPHALT PLACEMENT AT THE PROJECT LIMITS TO MINIMIZE IMPACT TO TRAFFIC.
- WHEN FLAGPERSONS ARE PRESENT, FLAGPERSON SIGNAGE MUST BE PLACED IN ACCORDANCE WITH THE MTTC.
- WHEN FLAGPERSONS ARE NOT PRESENT, THE FLAGPERSON SIGNAGE MUST BE REMOVED OR HIDDEN.
- PROVIDE TEMPORARY RAMPS & CROSSING WHERE DIRECTED BY CONTRACT ADMINISTRATOR & IN ACCORDANCE WITH THE ACCESSIBILITY PLAN FOR PEDESTRIAN CROSSINGS WHILE PERFORMING WORK IN THE INTERSECTIONS AND APPROACHES.
- INSTALL WARNING FLAGS IN ACCORDANCE WITH MTTC 3.07.04 ON THE FIRST WARNING SIGN IN EACH LANE DROP TAPER.
- WHERE A LANE IS REQUIRED TO BE CLOSED ON MAJOR INTERSECTING STREETS PERFORM THE WORK ON THE TIE-IN DURING OFF PEAK-HOURS.
- TEMPORARY TRANSIT LANDINGS WILL BE REQUIRED FOR ANY TEMPORARY TRANSIT STOP RELOCATIONS IN ACCORDANCE WITH THE MTTC.
- CONTRACTOR TO MONITOR & MAINTAIN THE TEMPORARY SIGNAGE FOR THE DURATION OF THE PROJECT & MODIFY AS NEEDED FOR EACH STAGE OF THE WORKS.
- CONTRACTOR TO REMEDY ANY SIGNAGE DEEMED INSUFFICIENT OR INCORRECT AS DIRECTED BY THE CONTRACT ADMINISTRATOR OR TRAFFIC MANAGEMENT.
- STAGE SIDEWALK WORK SUCH THAT PEDESTRIAN ACCESS IS MAINTAINED ALONG ONE SIDE OF EACH ROADWAY AT ALL TIMES.
- PROVIDE ADVANCED CONSTRUCTION & SIDEWALK CLOSED/DETOUR SIGNAGE IN ACCORDANCE WITH THE MTTC. PROVIDE SMALL CONES IN CENTRE WHERE BARRICADES GUIDE PEDESTRIANS THROUGH THE CONSTRUCTION ZONE.

**TRAFFIC MANAGEMENT: LUMSDEN AVE MAJOR REHABILITATION**

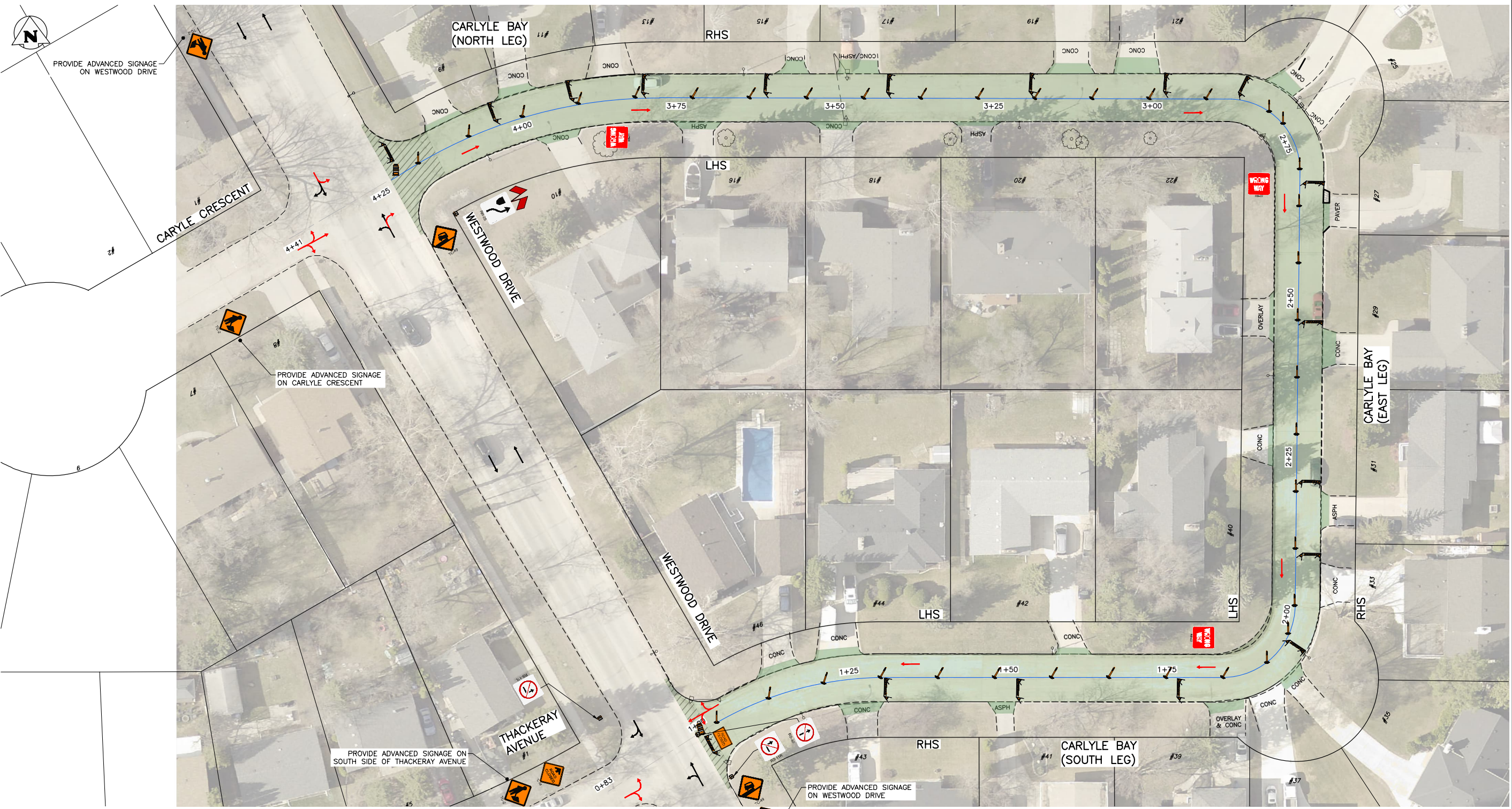
- PERFORM WORK LANE-AT-A-TIME IN TWO PHASES.
- ADDITIONAL SUB-PHASES WILL BE REQUIRED FOR WORK IN INTERSECTIONS.
- MAINTAIN ACCESS TO PRIVATE APPROACHES.
- NOTIFY CONTRACT ADMINISTRATOR OF ANY CLOSURES TO PRIVATE APPROACHES 3 DAYS BEFORE IMPLEMENTING CLOSURE.
- PROVIDE TEMPORARY TRANSIT LANDINGS IN ACCORDANCE WITH THE MTTC - FIGURE 19 FOR TRANSIT LANDINGS.
- MAINTAIN NATURAL TRAFFIC FLOW FOR EACH PHASE.
- PROVIDE ADDITIONAL SIGNAGE FOR WORK IN INTERSECTIONS IN ACCORDANCE WITH THE MTTC.
- PROVIDE ADVANCED SIGNAGE ALONG EACH ADJOINING STREET IN ACCORDANCE WITH THE MTTC.

TENDER NO. 66-2023

<b>THE CITY OF WINNIPEG</b> PUBLIC WORKS DEPARTMENT ENGINEERING DIVISION		
PROJECT TITLE 2023 LOCAL STREET RENEWALS: HOLDSWORTH AVE & VARIOUS LOCATIONS		SHEET OF 5 12
PHASING & SIGNAGE PLAN: LUMSDEN AVE: MAJOR REHABILITATION PHASE 2		COMPUTER FILE NAME 22-0107-009
NO. REVISIONS      DATE      BY		FIGURE F-0302

Filepath: C:\Users\GSmalley\Desktop\FMS\22-0107-009\22-0107-009\_C1\_F-ALL\_Signage Figures - TabF-0302 Plotted By: GSmalley 23/04/05 [Wed 4:52pm]  
 All rights reserved.

Filepath: C:\Users\jgibson\OneDrive\Desktop\FMS\22-0107-009\22-0107-009\_C1\_F-ALL\_Signage Figures - TabF-0401 Plotted By: GSmallley 23/04/05 [Wed 4:53pm]  
 All rights reserved. Scale: 1:1



**STAGING & SIGNAGE: PHASE 1 – RIGHT HAND SIDE LANES**

SCALE: NTS

- PEDESTRIANS
- TEMPORARY TRAFFIC FLOW

**GENERAL NOTES:**

1. ALL TEMPORARY TRAFFIC CONTROL TO BE IN ACCORDANCE WITH THE LATEST MANUAL OF TEMPORARY TRAFFIC CONTROL ON CITY STREETS (MTTC) AT TENDER.
2. PERFORM WORK IN PHASES & STAGES TO MINIMIZE IMPACT TO TRAFFIC FLOW AND ACCESS TO RESIDENCES.
3. NOT ALL REQUIRED SIGNAGE IS SHOWN FOR EACH PHASE & SUB-PHASE. ADDITIONAL SIGNAGE TO PROVIDED IN ACCORDANCE WITH THE MTTC.
4. THE PERMANENT POSTED SPEED LIMIT OF 50 KM/HR SHALL BE USED FOR ALL TAPER LENGTHS AND OTHER CRITERIA IN THE MTTC.
5. CONTRACTOR SHALL SUBMIT THE PEDESTRIAN ACCESSIBILITY PLAN FOR REVIEW & ACCEPTANCE BY THE CONTRACT ADMINISTRATOR.
6. CONTRACTOR SHALL BE RESPONSIBLE FOR ALL PERMITS, & THE SUPPLY, PLACEMENT & MAINTENANCE OF ALL TEMPORARY TRAFFIC CONTROL SIGNAGE IN ACCORDANCE WITH THE TENDER.
7. ALL LANE CLOSURE REQUESTS MUST BE SUBMITTED THROUGH THE CONTRACT ADMINISTRATOR & ARE SUBJECT TO THE APPROVAL OF THE TRAFFIC MANAGEMENT BRANCH.
8. CONTRACTOR TO PROVIDE FLAGPERSONS IN ACCORDANCE WITH THE MTTC WHEN MOVING MATERIALS OR EQUIPMENT INTO OR OUT OF TRAFFIC.
9. CONTRACTOR SHALL PROVIDE FLAGPERSONS DURING ALL ASPHALT PLACEMENT AT THE PROJECT LIMITS TO MINIMIZE IMPACT TO TRAFFIC.
10. WHEN FLAGPERSONS ARE PRESENT, FLAGPERSON SIGNAGE MUST BE PLACED IN ACCORDANCE WITH THE MTTC.
11. WHEN FLAGPERSONS ARE NOT PRESENT, THE FLAGPERSON SIGNAGE MUST BE REMOVED OR HIDDEN.
12. PROVIDE TEMPORARY RAMPS & CROSSING WHERE DIRECTED BY CONTRACT ADMINISTRATOR & IN ACCORDANCE WITH THE ACCESSIBILITY PLAN FOR PEDESTRIAN CROSSINGS WHILE PERFORMING WORK IN THE INTERSECTIONS AND APPROACHES.
13. INSTALL WARNING FLAGS IN ACCORDANCE WITH MTTC 3.07.04 ON THE FIRST WARNING SIGN IN EACH LANE DROP TAPER.
14. WHERE A LANE IS REQUIRED TO BE CLOSED ON MAJOR INTERSECTING STREETS PERFORM THE WORK ON THE TIE-IN DURING OFF PEAK-HOURS.
15. TEMPORARY TRANSIT LANDINGS WILL BE REQUIRED FOR ANY TEMPORARY TRANSIT STOP RELOCATIONS IN ACCORDANCE WITH THE MTTC.
16. CONTRACTOR TO MONITOR & MAINTAIN THE TEMPORARY SIGNAGE FOR THE DURATION OF THE PROJECT & MODIFY AS NEEDED FOR EACH STAGE OF THE WORKS.
17. CONTRACTOR TO REMEDY ANY SIGNAGE DEEMED INSUFFICIENT OR INCORRECT AS DIRECTED BY THE CONTRACT ADMINISTRATOR OR TRAFFIC MANAGEMENT.
18. STAGE SIDEWALK WORK SUCH THAT PEDESTRIAN ACCESS IS MAINTAINED ALONG ONE SIDE OF EACH ROADWAY AT ALL TIMES.
19. PROVIDE ADVANCED CONSTRUCTION & SIDEWALK CLOSED/DETOUR SIGNAGE IN ACCORDANCE WITH THE MTTC. PROVIDE SMALL CONES IN CENTRE WHERE BARRICADES .GUIDE PEDESTRIANS THROUGH THE CONSTRUCTION ZONE.

**TRAFFIC MANAGEMENT: CARLYLE BAY – MINOR REHABILITATION**

1. PERFORM WORK LANE-AT-A-TIME IN TWO PHASES.
2. MINIMIZE CLOSURE TO PRIVATE APPROACHES .
3. NOTIFY CONTRACT ADMINISTRATOR 3 DAYS PRIOR TO CLOSURE OF ANY PRIVATE APPROACH.
4. TRAFFIC TO BE MAINTAIN NATURAL TRAFFIC FLOW FOR EACH PHASE.
5. SEE MTTC FIGURE 27.

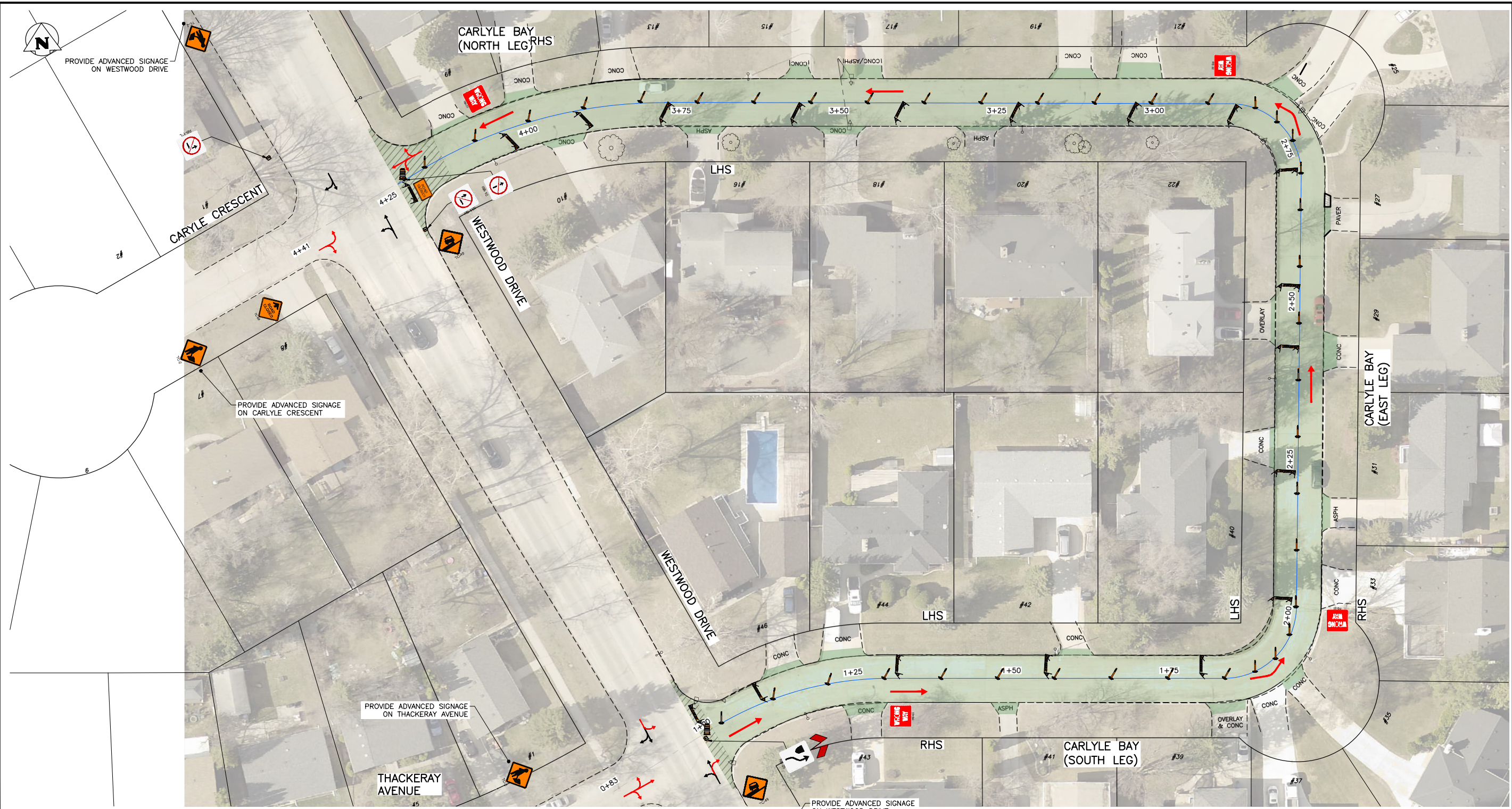
TENDER NO. 66-2023

PROJECT TITLE <b>2023 LOCAL STREET RENEWALS:          HOLDSWORTH AVE &amp; VARIOUS LOCATIONS</b>		SHEET OF <b>6 12</b>												
PHASING & SIGNAGE PLAN: <b>CARLYLE BAY: MINOR REHABILITATION          PHASE 1</b>		COMPUTER FILE NAME 22-0107-009 FIGURE F-0401												
<table border="1" style="width: 100%; border-collapse: collapse;"> <thead> <tr> <th>NO.</th> <th>REVISIONS</th> <th>DATE</th> <th>BY</th> </tr> </thead> <tbody> <tr> <td>B</td> <td>ISSUED FOR REVIEW</td> <td>23/04/05</td> <td>GES</td> </tr> <tr> <td>A</td> <td>ISSUED FOR REVIEW</td> <td>23/03/20</td> <td>GES</td> </tr> </tbody> </table>	NO.	REVISIONS	DATE	BY	B	ISSUED FOR REVIEW	23/04/05	GES	A	ISSUED FOR REVIEW	23/03/20	GES		
NO.	REVISIONS	DATE	BY											
B	ISSUED FOR REVIEW	23/04/05	GES											
A	ISSUED FOR REVIEW	23/03/20	GES											

**PROPERTY LIMITS DELINEATION**  
 DELINEATION OF PROPERTY LIMITS AS SHOWN ON THIS DWG DOES NOT REPRESENT A "LEGAL SURVEY". KGS GROUP MAKES NO REPRESENTATION OR WARRANTY AS TO THE ACCURACY OF PROPERTY LIMITS DELINEATED ON THIS DWG, NOR ON THE DIMENSIONAL ACCURACY OF DWG FEATURES RELATIVE TO THOSE PROPERTY LIMITS.

**METRIC**  
 WHOLE NUMBERS INDICATE MILLIMETRES  
 DECIMALIZED NUMBERS INDICATE METRES

Filepath: C:\Users\jgsmal\OneDrive\Desktop\FMS\22-0107-009\22-0107-009\_C1\_F-ALL\_Signage Figures - Tab\F-0402 Plotted By: GSmalley 23/04/05 [Wed 4:53pm]  
 All rights reserved. Plot Scale: 1:1



**STAGING & SIGNAGE: PHASE 2 – LEFT HAND SIDE LANES**

SCALE: NTS

- ↔ PEDESTRIANS
- TEMPORARY TRAFFIC FLOW

**GENERAL NOTES:**

1. ALL TEMPORARY TRAFFIC CONTROL TO BE IN ACCORDANCE WITH THE LATEST MANUAL OF TEMPORARY TRAFFIC CONTROL ON CITY STREETS (MTTC) AT TENDER.
2. PERFORM WORK IN PHASES & STAGES TO MINIMIZE IMPACT TO TRAFFIC FLOW AND ACCESS TO RESIDENCES.
3. NOT ALL REQUIRED SIGNAGE IS SHOWN FOR EACH PHASE & SUB-PHASE. ADDITIONAL SIGNAGE TO PROVIDED IN ACCORDANCE WITH THE MTTC.
4. THE PERMANENT POSTED SPEED LIMIT OF 50 KM/HR SHALL BE USED FOR ALL TAPER LENGTHS AND OTHER CRITERIA IN THE MTTC.
5. CONTRACTOR SHALL SUBMIT THE PEDESTRIAN ACCESSIBILITY PLAN FOR REVIEW & ACCEPTANCE BY THE CONTRACT ADMINISTRATOR.
6. CONTRACTOR SHALL BE RESPONSIBLE FOR ALL PERMITS, & THE SUPPLY, PLACEMENT & MAINTENANCE OF ALL TEMPORARY TRAFFIC CONTROL SIGNAGE IN ACCORDANCE WITH THE TENDER.
7. ALL LANE CLOSURE REQUESTS MUST BE SUBMITTED THROUGH THE CONTRACT ADMINISTRATOR & ARE SUBJECT TO THE APPROVAL OF THE TRAFFIC MANAGEMENT BRANCH.
8. CONTRACTOR TO PROVIDE FLAGPERSONS IN ACCORDANCE WITH THE MTTC WHEN MOVING MATERIALS OR EQUIPMENT INTO OR OUT OF TRAFFIC.
9. CONTRACTOR SHALL PROVIDE FLAGPERSONS DURING ALL ASPHALT PLACEMENT AT THE PROJECT LIMITS TO MINIMIZE IMPACT TO TRAFFIC.
10. WHEN FLAGPERSONS ARE PRESENT, FLAGPERSON SIGNAGE MUST BE PLACED IN ACCORDANCE WITH THE MTTC.

11. WHEN FLAGPERSONS ARE NOT PRESENT, THE FLAGPERSON SIGNAGE MUST BE REMOVED OR HIDDEN.
12. PROVIDE TEMPORARY RAMPS & CROSSING WHERE DIRECTED BY CONTRACT ADMINISTRATOR & IN ACCORDANCE WITH THE ACCESSIBILITY PLAN FOR PEDESTRIAN CROSSINGS WHILE PERFORMING WORK IN THE INTERSECTIONS AND APPROACHES.
13. INSTALL WARNING FLAGS IN ACCORDANCE WITH MTTC 3.07.04 ON THE FIRST WARNING SIGN IN EACH LANE DROP TAPER.
14. WHERE A LANE IS REQUIRED TO BE CLOSED ON MAJOR INTERSECTING STREETS PERFORM THE WORK ON THE TIE-IN DURING OFF PEAK-HOURS.
15. TEMPORARY TRANSIT LANDINGS WILL BE REQUIRED FOR ANY TEMPORARY TRANSIT STOP RELOCATIONS IN ACCORDANCE WITH THE MTTC.
16. CONTRACTOR TO MONITOR & MAINTAIN THE TEMPORARY SIGNAGE FOR THE DURATION OF THE PROJECT & MODIFY AS NEEDED FOR EACH STAGE OF THE WORKS.
17. CONTRACTOR TO REMEDY ANY SIGNAGE DEEMED INSUFFICIENT OR INCORRECT AS DIRECTED BY THE CONTRACT ADMINISTRATOR OR TRAFFIC MANAGEMENT.
18. STAGE SIDEWALK WORK SUCH THAT PEDESTRIAN ACCESS IS MAINTAINED ALONG ONE SIDE OF EACH ROADWAY AT ALL TIMES.
19. PROVIDE ADVANCED CONSTRUCTION & SIDEWALK CLOSED/DETOUR SIGNAGE IN ACCORDANCE WITH THE MTTC. PROVIDE SMALL CONES IN CENTRE WHERE BARRICADES GUIDE PEDESTRIANS THROUGH THE CONSTRUCTION ZONE.

**TRAFFIC MANAGEMENT: CARLYLE BAY – MINOR REHABILITATION**

1. PERFORM WORK LANE-AT-A-TIME IN TWO PHASES.
2. MINIMIZE CLOSURE TO PRIVATE APPROACHES.
3. NOTIFY CONTRACT ADMINISTRATOR 3 DAYS PRIOR TO CLOSURE OF ANY PRIVATE APPROACH.
4. TRAFFIC TO BE MAINTAIN COUNTER-CLOCKWISE TRAFFIC FLOW FOR FULL DURATION OF CONSTRUCTION.
5. PHASE 1: CONSTRUCTION IN RIGHT HAND SIDE LANE
- 5.1. TRAFFIC TO BE CONTRACT-FLOW COUNTER-CLOCKWISE.
6. PHASE 2: CONSTRUCTION IN LEFT HAND SIDE LANE
- 6.1. TRAFFIC TO BE NORMAL-FLOW IN RIGHT HAND SIDE LANE.
7. SEE MTTC FIGURE 27.

TENDER NO. 66-2023

**PROPERTY LIMITS DELINEATION**  
 DELINEATION OF PROPERTY LIMITS AS SHOWN ON THIS DWG DOES NOT REPRESENT A "LEGAL SURVEY". KGS GROUP MAKES NO REPRESENTATION OR WARRANTY AS TO THE ACCURACY OF PROPERTY LIMITS DELINEATED ON THIS DWG, NOR ON THE DIMENSIONAL ACCURACY OF DWG FEATURES RELATIVE TO THOSE PROPERTY LIMITS.

**METRIC**  
 WHOLE NUMBERS INDICATE MILLIMETRES  
 DECIMALIZED NUMBERS INDICATE METRES

**THE CITY OF WINNIPEG**  
PUBLIC WORKS DEPARTMENT  
ENGINEERING DIVISION

**KGS**  
GROUP

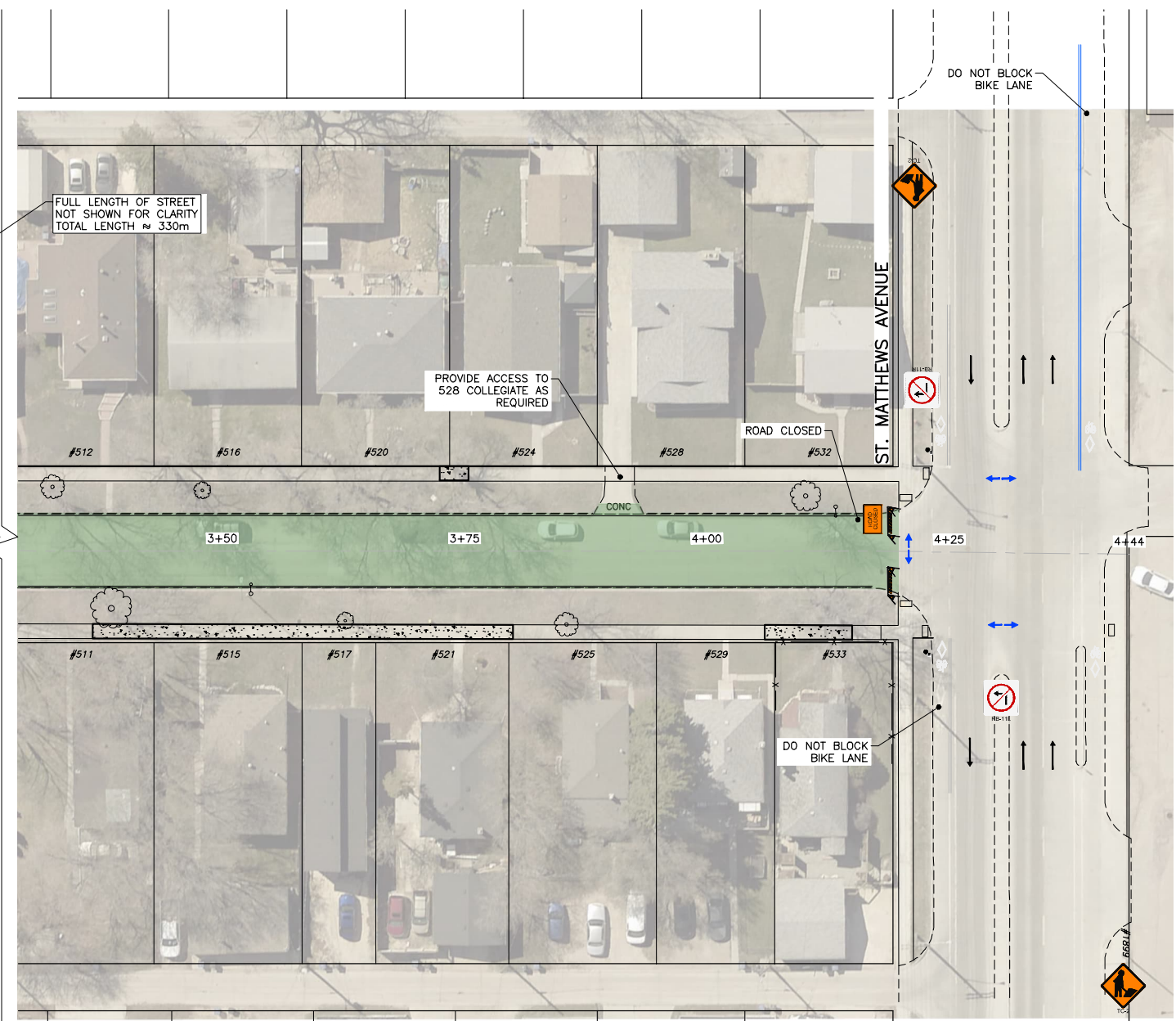
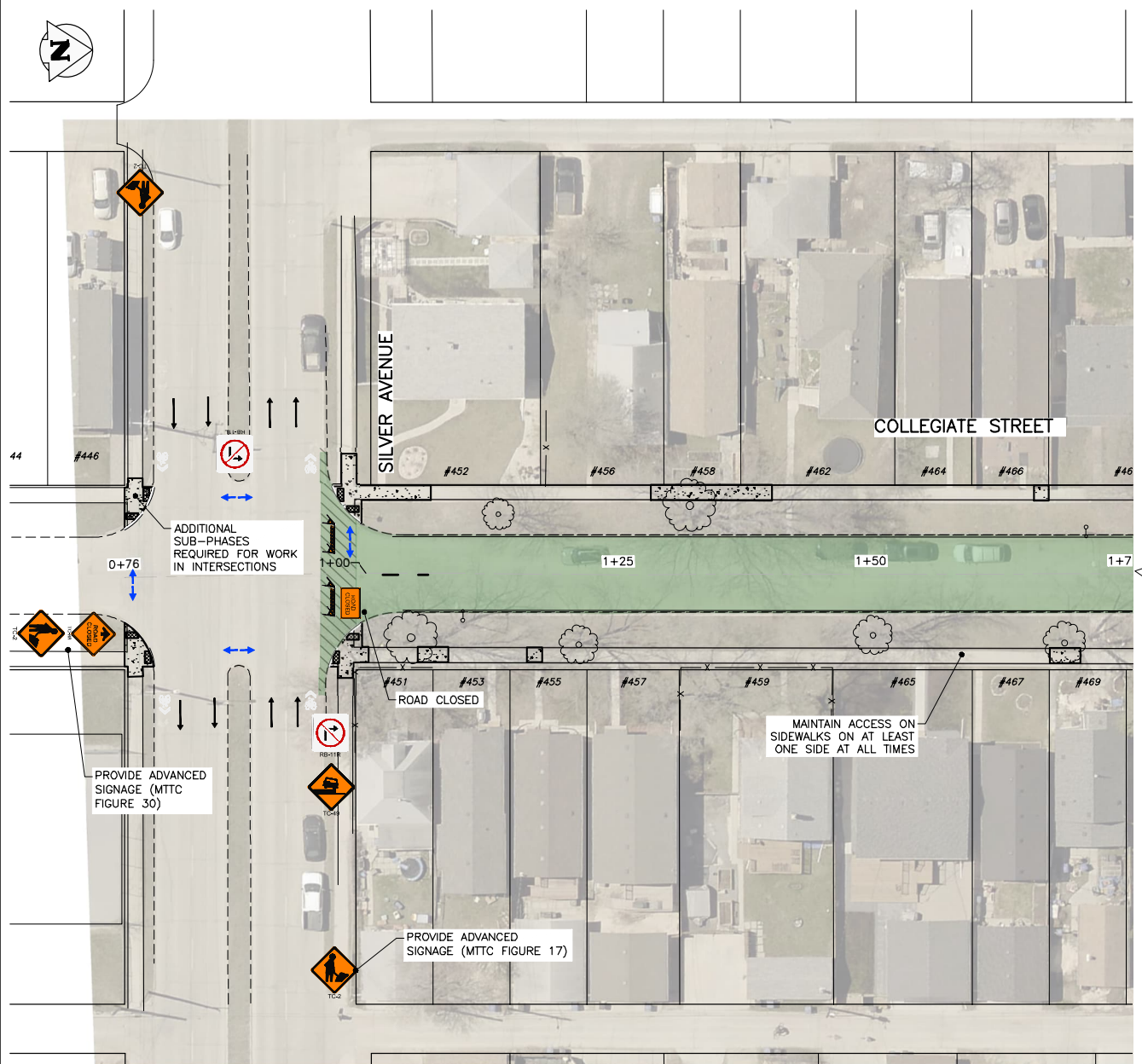
PROJECT TITLE		SHEET OF	
2023 LOCAL STREET RENEWALS: HOLDSWORTH AVE & VARIOUS LOCATIONS		7 12	
PHASING & SIGNAGE PLAN: CARLYLE BAY: MINOR REHABILITATION PHASE 2		COMPUTER FILE NAME 22-0107-009	
		FIGURE F-0402	

NO.	REVISIONS	DATE	BY
B	ISSUED FOR REVIEW	23/04/05	GES
A	ISSUED FOR REVIEW	23/03/20	GES





Files: C:\Users\jbruce\OneDrive\Desktop\FMS\22-0107-009\22-0107-009\_C1\_F-ALL\_Signage Figures - TabF-0501 Plotted By: GSmallley 23/04/05 [Wed 4:54pm] All Rights Reserved / Plot Scale: 1:1



**STAGING & SIGNAGE: FULL CLOSURE**  
SCALE: NTS

- ↔ PEDESTRIANS
- TEMPORARY TRAFFIC FLOW

**PROPERTY LIMITS DELINEATION**  
DELINEATION OF PROPERTY LIMITS AS SHOWN ON THIS DWG DOES NOT REPRESENT A "LEGAL SURVEY". KGS GROUP MAKES NO REPRESENTATION OR WARRANTY AS TO THE ACCURACY OF PROPERTY LIMITS DELINEATED ON THIS DWG, NOR ON THE DIMENSIONAL ACCURACY OF DWG FEATURES RELATIVE TO THOSE PROPERTY LIMITS.

**METRIC**  
WHOLE NUMBERS INDICATE MILLIMETRES  
DECIMALIZED NUMBERS INDICATE METRES

**GENERAL NOTES:**

1. ALL TEMPORARY TRAFFIC CONTROL TO BE IN ACCORDANCE WITH THE LATEST MANUAL OF TEMPORARY TRAFFIC CONTROL ON CITY STREETS (MTTC) AT TENDER.
2. PERFORM WORK IN PHASES & STAGES TO MINIMIZE IMPACT TO TRAFFIC FLOW AND ACCESS TO RESIDENCES.
3. NOT ALL REQUIRED SIGNAGE IS SHOWN FOR EACH PHASE & SUB-PHASE. ADDITIONAL SIGNAGE TO PROVIDED IN ACCORDANCE WITH THE MTTC.
4. THE PERMANENT POSTED SPEED LIMIT OF 50 KM/HR SHALL BE USED FOR ALL TAPER LENGTHS AND OTHER CRITERIA IN THE MTTC.
5. CONTRACTOR SHALL SUBMIT THE PEDESTRIAN ACCESSIBILITY PLAN FOR REVIEW & ACCEPTANCE BY THE CONTRACT ADMINISTRATOR.
6. CONTRACTOR SHALL BE RESPONSIBLE FOR ALL PERMITS, & THE SUPPLY, PLACEMENT & MAINTENANCE OF ALL TEMPORARY TRAFFIC CONTROL SIGNAGE IN ACCORDANCE WITH THE TENDER.
7. ALL LANE CLOSURE REQUESTS MUST BE SUBMITTED THROUGH THE CONTRACT ADMINISTRATOR & ARE SUBJECT TO THE APPROVAL OF THE TRAFFIC MANAGEMENT BRANCH.
8. CONTRACTOR TO PROVIDE FLAGPERSONS IN ACCORDANCE WITH THE MTTC WHEN MOVING MATERIALS OR EQUIPMENT INTO OR OUT OF TRAFFIC.
9. CONTRACTOR SHALL PROVIDE FLAGPERSONS DURING ALL ASPHALT PLACEMENT AT THE PROJECT LIMITS TO MINIMIZE IMPACT TO TRAFFIC.
10. WHEN FLAGPERSONS ARE PRESENT, FLAGPERSON SIGNAGE MUST BE PLACED IN ACCORDANCE WITH THE MTTC.
11. WHEN FLAGPERSONS ARE NOT PRESENT, THE FLAGPERSON SIGNAGE MUST BE REMOVED OR HIDDEN.
12. PROVIDE TEMPORARY RAMPS & CROSSING WHERE DIRECTED BY CONTRACT ADMINISTRATOR & IN ACCORDANCE WITH THE ACCESSIBILITY PLAN FOR PEDESTRIAN CROSSINGS WHILE PERFORMING WORK IN THE INTERSECTIONS AND APPROACHES.
13. INSTALL WARNING FLAGS IN ACCORDANCE WITH MTTC 3.07.04 ON THE FIRST WARNING SIGN IN EACH LANE DROP TAPER.
14. WHERE A LANE IS REQUIRED TO BE CLOSED ON MAJOR INTERSECTING STREETS PERFORM THE WORK ON THE TIE-IN DURING OFF PEAK-HOURS.
15. TEMPORARY TRANSIT LANDINGS WILL BE REQUIRED FOR ANY TEMPORARY TRANSIT STOP RELOCATIONS IN ACCORDANCE WITH THE MTTC.
16. CONTRACTOR TO MONITOR & MAINTAIN THE TEMPORARY SIGNAGE FOR THE DURATION OF THE PROJECT & MODIFY AS NEEDED FOR EACH STAGE OF THE WORKS.
17. CONTRACTOR TO REMEDY ANY SIGNAGE DEEMED INSUFFICIENT OR INCORRECT AS DIRECTED BY THE CONTRACT ADMINISTRATOR OR TRAFFIC MANAGEMENT.
18. STAGE SIDEWALK WORK SUCH THAT PEDESTRIAN ACCESS IS MAINTAINED ALONG ONE SIDE OF EACH ROADWAY AT ALL TIMES.
19. PROVIDE ADVANCED CONSTRUCTION & SIDEWALK CLOSED/DETOUR SIGNAGE IN ACCORDANCE WITH THE MTTC. PROVIDE SMALL CONES IN CENTRE WHERE BARRICADES .GUIDE PEDESTRIANS THROUGH THE CONSTRUCTION ZONE.

- TRAFFIC MANAGEMENT: COLLEGIATE MINOR REHAB**
1. FULL CLOSURE PERMITTED FROM SILVER AVE TO ST. MATTHEWS AVE.
  2. SUB-PHASES REQUIRED FOR INSTALLATION OF DETECTABLE TILES ON SILVER AVE.
  3. DO NOT BLOCK BIKE SHARROWS OR BIKE LANES ON SILVER AVE OR ST. MATTHEWS AVE. PROVIDED ADDITIONAL SIGNAGE WHILE WORKING ON THE SILVER AVE DETECTABLE TILES.
  4. PROVIDE TEMPORARY FRONT STREET ACCESS TO 528 COLLEGIATE AVE WHEN REQUIRED. THIS HOUSE HAS A SECONDARY ACCESS TO THEIR GARAGE FROM THE ALLEY AS WELL.
  5. SEE MTTC FIGURE 30.

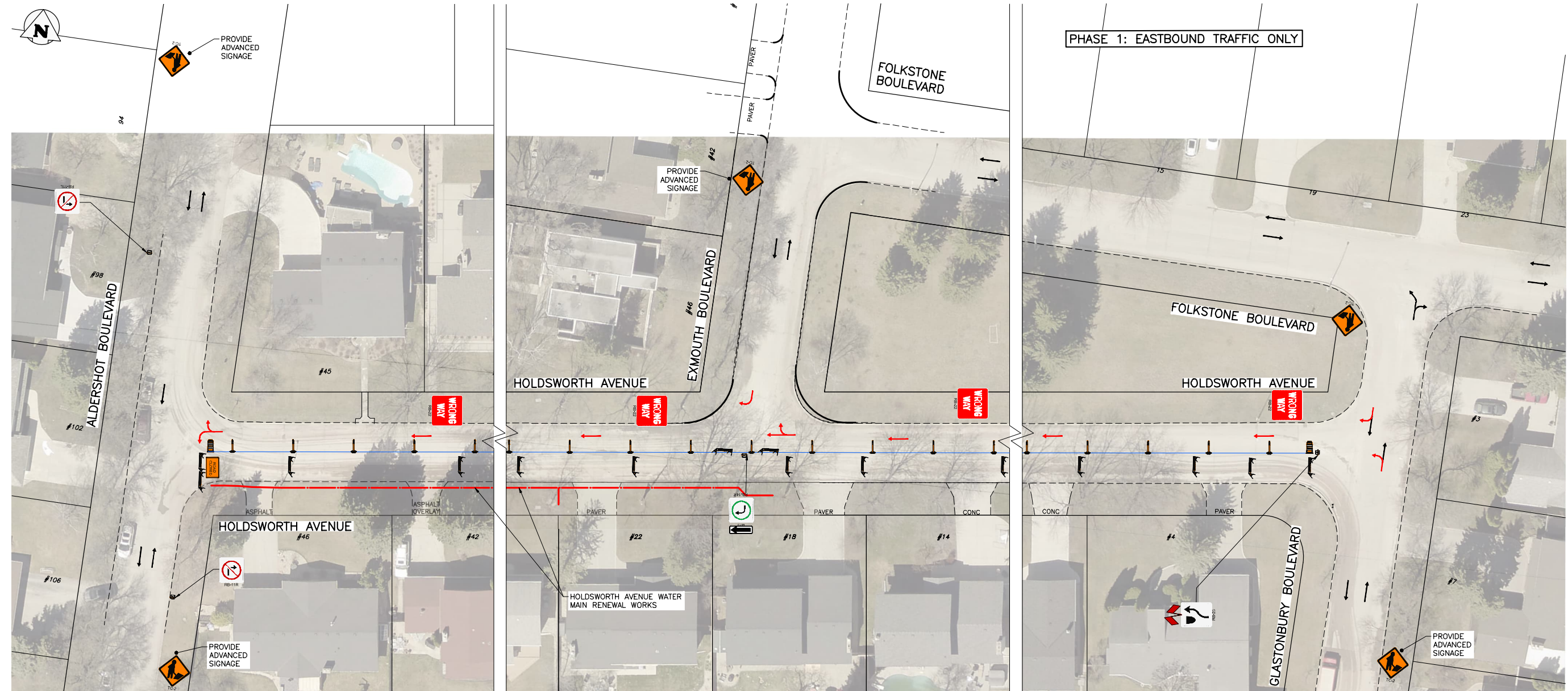
TENDER NO. 66-2023

**THE CITY OF WINNIPEG**  
PUBLIC WORKS DEPARTMENT  
ENGINEERING DIVISION

PROJECT TITLE		SHEET OF	
2023 LOCAL STREET RENEWALS: HOLDSWORTH AVE & VARIOUS LOCATIONS		8 12	
PHASING & SIGNAGE PLAN: COLLEGIATE ST: MINOR REHABILITATION FULL CLOSURE		COMPUTER FILE NAME	
		22-0107-009	
		FIGURE	
		F-0501	

NO.	REVISIONS	DATE	BY
B	ISSUED FOR REVIEW	23/04/05	GES
A	ISSUED FOR REVIEW	23/03/20	GES

COORDINATE  
CONSTRUCTION STAGING &  
SIGNAGE WITH WORKS ON  
HOLDSWORTH & EXMOUTH



**STAGING & SIGNAGE: PHASE 1:**  
**WATER MAIN RENEWAL**  
SCALE: NTS

← PEDESTRIANS  
→ TEMPORARY TRAFFIC FLOW

**GENERAL NOTES:**

- ALL TEMPORARY TRAFFIC CONTROL TO BE IN ACCORDANCE WITH THE LATEST MANUAL OF TEMPORARY TRAFFIC CONTROL ON CITY STREETS (MTTC) AT TENDER.
- PERFORM WORK IN PHASES & STAGES TO MINIMIZE IMPACT TO TRAFFIC FLOW AND ACCESS TO RESIDENCES.
- NOT ALL REQUIRED SIGNAGE IS SHOWN FOR EACH PHASE & SUB-PHASE. ADDITIONAL SIGNAGE TO PROVIDED IN ACCORDANCE WITH THE MTTC.
- THE PERMANENT POSTED SPEED LIMIT OF 50 KM/HR SHALL BE USED FOR ALL TAPER LENGTHS AND OTHER CRITERIA IN THE MTTC.
- CONTRACTOR SHALL SUBMIT THE PEDESTRIAN ACCESSIBILITY PLAN FOR REVIEW & ACCEPTANCE BY THE CONTRACT ADMINISTRATOR.
- CONTRACTOR SHALL BE RESPONSIBLE FOR ALL PERMITS, & THE SUPPLY, PLACEMENT & MAINTENANCE OF ALL TEMPORARY TRAFFIC CONTROL SIGNAGE IN ACCORDANCE WITH THE TENDER.
- ALL LANE CLOSURE REQUESTS MUST BE SUBMITTED THROUGH THE CONTRACT ADMINISTRATOR & ARE SUBJECT TO THE APPROVAL OF THE TRAFFIC MANAGEMENT BRANCH.
- CONTRACTOR TO PROVIDE FLAGPERSONS IN ACCORDANCE WITH THE MTTC WHEN MOVING MATERIALS OR EQUIPMENT INTO OR OUT OF TRAFFIC.
- CONTRACTOR SHALL PROVIDE FLAGPERSONS DURING ALL ASPHALT PLACEMENT AT THE PROJECT LIMITS TO MINIMIZE IMPACT TO TRAFFIC.
- WHEN FLAGPERSONS ARE PRESENT, FLAGPERSON SIGNAGE MUST BE PLACED IN ACCORDANCE WITH THE MTTC.
- WHEN FLAGPERSONS ARE NOT PRESENT, THE FLAGPERSON SIGNAGE MUST BE REMOVED OR HIDDEN.
- PROVIDE TEMPORARY RAMPS & CROSSING WHERE DIRECTED BY CONTRACT ADMINISTRATOR & IN ACCORDANCE WITH THE ACCESSIBILITY PLAN FOR PEDESTRIAN CROSSINGS WHILE PERFORMING WORK IN THE INTERSECTIONS AND APPROACHES.
- INSTALL WARNING FLAGS IN ACCORDANCE WITH MTTC 3.07.04 ON THE FIRST WARNING SIGN IN EACH LANE DROP TAPER.
- WHERE A LANE IS REQUIRED TO BE CLOSED ON MAJOR INTERSECTING STREETS PERFORM THE WORK ON THE TIE-IN DURING OFF PEAK-HOURS.
- TEMPORARY TRANSIT LANDINGS WILL BE REQUIRED FOR ANY TEMPORARY TRANSIT STOP RELOCATIONS IN ACCORDANCE WITH THE MTTC.
- CONTRACTOR TO MONITOR & MAINTAIN THE TEMPORARY SIGNAGE FOR THE DURATION OF THE PROJECT & MODIFY AS NEEDED FOR EACH STAGE OF THE WORKS.
- CONTRACTOR TO REMEDY ANY SIGNAGE DEEMED INSUFFICIENT OR INCORRECT AS DIRECTED BY THE CONTRACT ADMINISTRATOR OR TRAFFIC MANAGEMENT.
- STAGE SIDEWALK WORK SUCH THAT PEDESTRIAN ACCESS IS MAINTAINED ALONG ONE SIDE OF EACH ROADWAY AT ALL TIMES.
- PROVIDE ADVANCED CONSTRUCTION & SIDEWALK CLOSED/DETOUR SIGNAGE IN ACCORDANCE WITH THE MTTC. PROVIDE SMALL CONES IN CENTRE WHERE BARRICADES GUIDE PEDESTRIANS THROUGH THE CONSTRUCTION ZONE.

**TRAFFIC MANAGEMENT:**  
PHASE 1 – WATER MAIN RENEWAL

- CLOSE EASTBOUND LANE WHILE PERFORMING WORK ON WATER MAIN.
- MAINTAIN WESTBOUND CONTRA-FLOW TRAFFIC FOR PHASE 1 – WATER MAIN WORKS.
- MAINTAIN ACCESS FOR RESIDENTS THROUGH ALL PHASES.
- PERFORM WATER MAIN WORKS INSTALLATION INDEPENDENTLY OF THE SURFACE WORKS.
- RESTORATION FROM WATER MAIN WORKS MAY BE CARRIED INTO PHASE 2 IF THE CONTRACT ADMINISTRATOR PERMITS.
- START SURFACE WORKS IMMEDIATELY FOLLOWING COMPLETION OF THE WATER MAIN INSTALLATION TO MINIMIZE IMPACT TO RESIDENTS.

TENDER NO. 66-2023

**THE CITY OF WINNIPEG**  
PUBLIC WORKS DEPARTMENT  
ENGINEERING DIVISION

**KGS GROUP**

PROJECT TITLE  
2023 LOCAL STREET RENEWALS:  
HOLDSWORTH AVE & VARIOUS LOCATIONS

PHASING & SIGNAGE PLAN:  
HOLDSWORTH AVE: MINOR REHABILITATION  
PHASE 1

SHEET 9 OF 12  
COMPUTER FILE NAME  
22-0107-009  
FIGURE  
F-0601

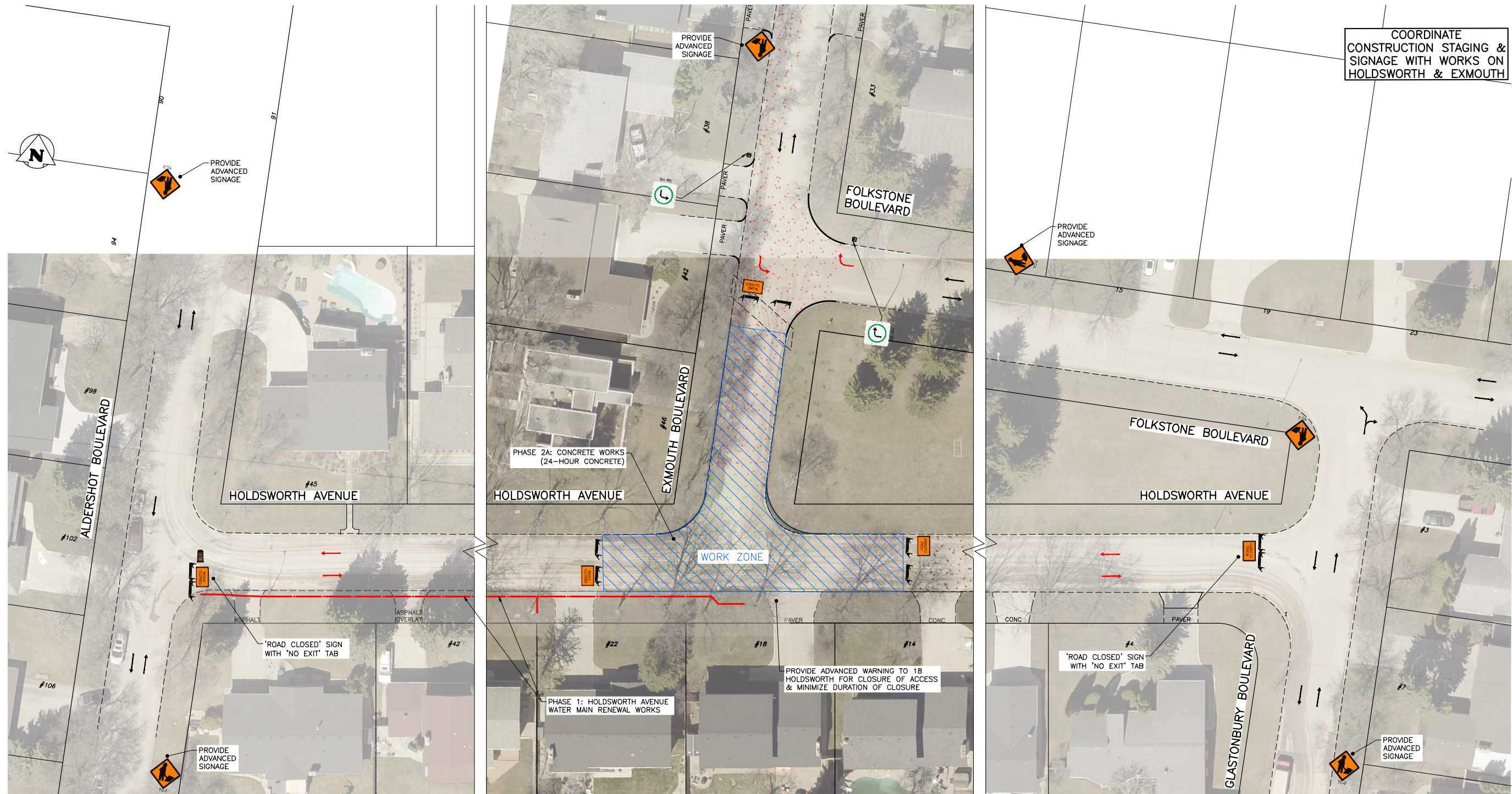
NO.	REVISIONS	DATE	BY
B	ISSUED FOR REVIEW	23/04/05	GES
A	ISSUED FOR REVIEW	23/03/20	GES

Filepath: C:\Users\mrcs\Documents\Projects\22-0107-009\22-0107-009\_C1\_F-ALL\_Signage Figures - TabF-0601 Plotted By: GSmallley 23/04/05 [Wed 4:55pm]  
 All rights reserved.

**PROPERTY LIMITS DELINEATION**  
DELINEATION OF PROPERTY LIMITS AS SHOWN ON THIS DWG DOES NOT REPRESENT A "LEGAL SURVEY". KGS GROUP MAKES NO REPRESENTATION OR WARRANTY AS TO THE ACCURACY OF PROPERTY LIMITS DELINEATED ON THIS DWG, NOR ON THE DIMENSIONAL ACCURACY OF DWG FEATURES RELATIVE TO THOSE PROPERTY LIMITS.

**METRIC**  
WHOLE NUMBERS INDICATE MILLIMETRES  
DECIMALIZED NUMBERS INDICATE METRES

Files: C:\Users\mrsullivan\Desktop\FMS\22-0107-009\22-0107-009\_C1\_F-ALL\_Signage Figures - TabF-0602 Plotted By: GSmalliey 23/04/05 [Wed 4:56pm]  
 All (841x554) / Plot Scale: 1:1



**STAGING & SIGNAGE: PHASE 2A**  
SCALE: NTS

- ↔ PEDESTRIANS
- TEMPORARY TRAFFIC FLOW

**PROPERTY LIMITS DELINEATION**

DELINEATION OF PROPERTY LIMITS AS SHOWN ON THIS DWG DOES NOT REPRESENT A "LEGAL SURVEY". KGS GROUP MAKES NO REPRESENTATION OR WARRANTY AS TO THE ACCURACY OF PROPERTY LIMITS DELINEATED ON THIS DWG, NOR ON THE DIMENSIONAL ACCURACY OF DWG FEATURES RELATIVE TO THOSE PROPERTY LIMITS.

**METRIC**

WHOLE NUMBERS INDICATE MILLIMETRES  
DECIMALIZED NUMBERS INDICATE METRES

**GENERAL NOTES:**

1. ALL TEMPORARY TRAFFIC CONTROL TO BE IN ACCORDANCE WITH THE LATEST MANUAL OF TEMPORARY TRAFFIC CONTROL ON CITY STREETS (MTTC) AT TENDER.
2. PERFORM WORK IN PHASES & STAGES TO MINIMIZE IMPACT TO TRAFFIC FLOW AND ACCESS TO RESIDENCES.
3. NOT ALL REQUIRED SIGNAGE IS SHOWN FOR EACH PHASE & SUB-PHASE. ADDITIONAL SIGNAGE TO PROVIDED IN ACCORDANCE WITH THE MTTC.
4. THE PERMANENT POSTED SPEED LIMIT OF 50 KM/HR SHALL BE USED FOR ALL TAPER LENGTHS AND OTHER CRITERIA IN THE MTTC.
5. CONTRACTOR SHALL SUBMIT THE PEDESTRIAN ACCESSIBILITY PLAN FOR REVIEW & ACCEPTANCE BY THE CONTRACT ADMINISTRATOR.
6. CONTRACTOR SHALL BE RESPONSIBLE FOR ALL PERMITS, & THE SUPPLY, PLACEMENT & MAINTENANCE OF ALL TEMPORARY TRAFFIC CONTROL SIGNAGE IN ACCORDANCE WITH THE TENDER.
7. ALL LANE CLOSURE REQUESTS MUST BE SUBMITTED THROUGH THE CONTRACT ADMINISTRATOR & ARE SUBJECT TO THE APPROVAL OF THE TRAFFIC MANAGEMENT BRANCH.
8. CONTRACTOR TO PROVIDE FLAGPERSONS IN ACCORDANCE WITH THE MTTC WHEN MOVING MATERIALS OR EQUIPMENT INTO OR OUT OF TRAFFIC.
9. CONTRACTOR SHALL PROVIDE FLAGPERSONS DURING ALL ASPHALT PLACEMENT AT THE PROJECT LIMITS TO MINIMIZE IMPACT TO TRAFFIC.
10. WHEN FLAGPERSONS ARE PRESENT, FLAGPERSON SIGNAGE MUST BE PLACED IN ACCORDANCE WITH THE MTTC.
11. WHEN FLAGPERSONS ARE NOT PRESENT, THE FLAGPERSON SIGNAGE MUST BE REMOVED OR HIDDEN.
12. PROVIDE TEMPORARY RAMPS & CROSSING WHERE DIRECTED BY CONTRACT ADMINISTRATOR & IN ACCORDANCE WITH THE ACCESSIBILITY PLAN FOR PEDESTRIAN CROSSINGS WHILE PERFORMING WORK IN THE INTERSECTIONS AND APPROACHES.
13. INSTALL WARNING FLAGS IN ACCORDANCE WITH MTTC 3.07.04 ON THE FIRST WARNING SIGN IN EACH LANE DROP TAPER.
14. WHERE A LANE IS REQUIRED TO BE CLOSED ON MAJOR INTERSECTING STREETS PERFORM THE WORK ON THE TIE-IN DURING OFF PEAK-HOURS.
15. TEMPORARY TRANSIT LANDINGS WILL BE REQUIRED FOR ANY TEMPORARY TRANSIT STOP RELOCATIONS IN ACCORDANCE WITH THE MTTC.
16. CONTRACTOR TO MONITOR & MAINTAIN THE TEMPORARY SIGNAGE FOR THE DURATION OF THE PROJECT & MODIFY AS NEEDED FOR EACH STAGE OF THE WORKS.
17. CONTRACTOR TO REMEDY ANY SIGNAGE DEEMED INSUFFICIENT OR INCORRECT AS DIRECTED BY THE CONTRACT ADMINISTRATOR OR TRAFFIC MANAGEMENT.
18. STAGE SIDEWALK WORK SUCH THAT PEDESTRIAN ACCESS IS MAINTAINED ALONG ONE SIDE OF EACH ROADWAY AT ALL TIMES.
19. PROVIDE ADVANCED CONSTRUCTION & SIDEWALK CLOSED/DETOUR SIGNAGE IN ACCORDANCE WITH THE MTTC. PROVIDE SMALL CONES IN CENTRE WHERE BARRICADES GUIDE PEDESTRIANS THROUGH THE CONSTRUCTION ZONE.

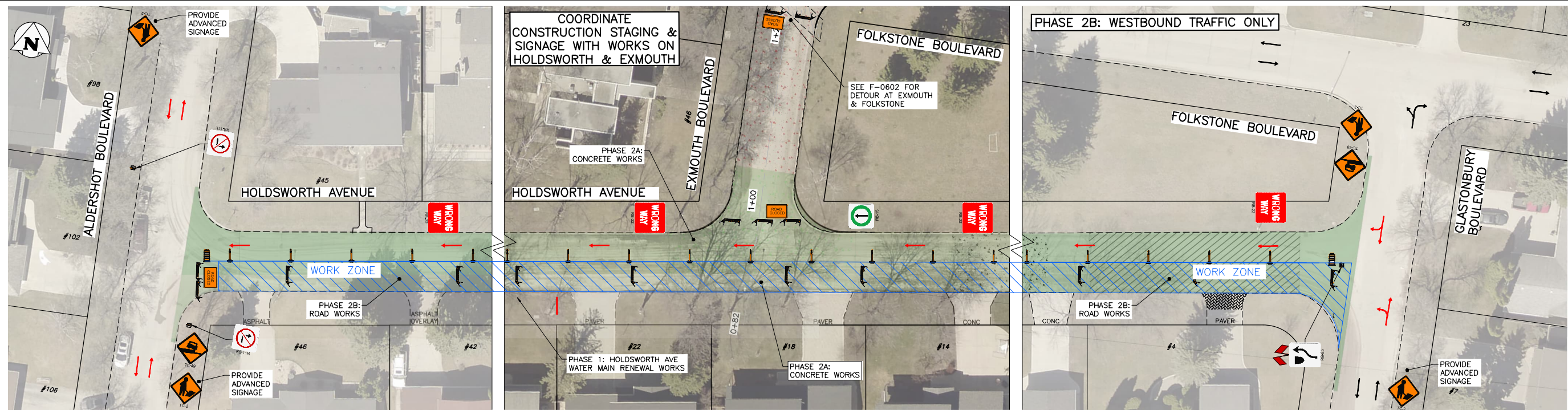
**TRAFFIC MANAGEMENT: HOLDSWORTH & EXMOUTH  
PHASE 2A - CONCRETE INTERSECTION**

1. CLOSE HOLDSWORTH AVE FOLLOWING MTTC FIGURE 29 AT BOTH ENDS.
2. CLOSE EXMOUTH AVE FROM FOLKSTONE BLVD TO HOLDSWORTH AVE.
3. MAINTAIN ACCESS FOR RESIDENTS THROUGH ALL PHASES.
- 3.1. PROVIDE ONE WEEK ADVANCED NOTICE TO 18 HOLDSWORTH DURING RECONSTRUCTION OF THE CONCRETE IN THE INTERSECTION.
- 3.2. MINIMIZE DURATION OF CLOSURE OF APPROACH.
4. PERFORM CONCRETE INTERSECTION RECONSTRUCTION SEPARATELY FROM MINOR REHABILITATION ROAD WORKS ON HOLDSWORTH & EXMOUTH.

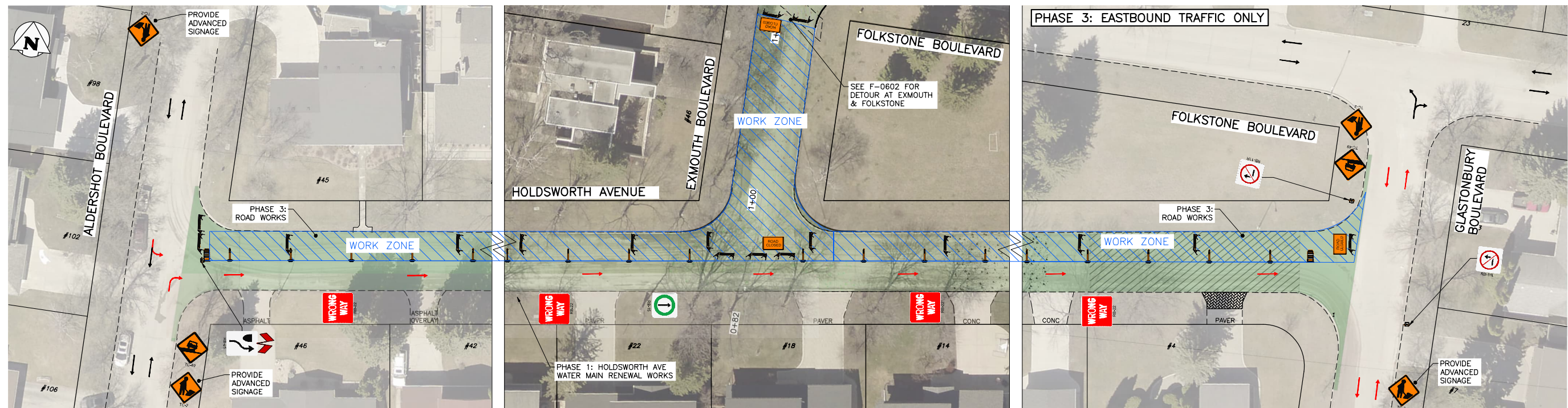
TENDER NO. 66-2023

<b>THE CITY OF WINNIPEG</b> PUBLIC WORKS DEPARTMENT ENGINEERING DIVISION		PROJECT TITLE <b>2023 LOCAL STREET RENEWALS:          HOLDSWORTH AVE &amp; VARIOUS LOCATIONS</b>	SHEET OF <b>10 12</b>
		PHASING & SIGNAGE PLAN: HOLDSWORTH AVE: MINOR REHABILITATION PHASE 2A	COMPUTER FILE NAME 22-0107-009  FIGURE F-0602

NO.	REVISIONS	DATE	BY
B	ISSUED FOR REVIEW	23/04/05	GES
A	ISSUED FOR REVIEW	23/03/20	GES



**STAGING & SIGNAGE: PHASE 2B – EASTBOUND (RHS) LANES**  
SCALE: NTS



**STAGING & SIGNAGE: PHASE 3 – WESTBOUND (LHS) LANES**  
SCALE: NTS

- ↔ PEDESTRIANS
- TEMPORARY TRAFFIC FLOW

**PROPERTY LIMITS DELINEATION**

DELINEATION OF PROPERTY LIMITS AS SHOWN ON THIS DWG DOES NOT REPRESENT A "LEGAL SURVEY". KGS GROUP MAKES NO REPRESENTATION OR WARRANTY AS TO THE ACCURACY OF PROPERTY LIMITS DELINEATED ON THIS DWG, NOR ON THE DIMENSIONAL ACCURACY OF DWG FEATURES RELATIVE TO THOSE PROPERTY LIMITS.

**METRIC**

WHOLE NUMBERS INDICATE MILLIMETRES  
DECIMALIZED NUMBERS INDICATE METRES

**GENERAL NOTES:**

1. ALL TEMPORARY TRAFFIC CONTROL TO BE IN ACCORDANCE WITH THE LATEST MANUAL OF TEMPORARY TRAFFIC CONTROL ON CITY STREETS (MTTC) AT TENDER.
2. PERFORM WORK IN PHASES & STAGES TO MINIMIZE IMPACT TO TRAFFIC FLOW AND ACCESS TO RESIDENCES.
3. NOT ALL REQUIRED SIGNAGE IS SHOWN FOR EACH PHASE & SUB-PHASE. ADDITIONAL SIGNAGE TO PROVIDED IN ACCORDANCE WITH THE MTTC.
4. THE PERMANENT POSTED SPEED LIMIT OF 50 KM/HR SHALL BE USED FOR ALL TAPER LENGTHS AND OTHER CRITERIA IN THE MTTC.
5. CONTRACTOR SHALL SUBMIT THE PEDESTRIAN ACCESSIBILITY PLAN FOR REVIEW & ACCEPTANCE BY THE CONTRACT ADMINISTRATOR.
6. CONTRACTOR SHALL BE RESPONSIBLE FOR ALL PERMITS, & THE SUPPLY, PLACEMENT & MAINTENANCE OF ALL TEMPORARY TRAFFIC CONTROL SIGNAGE IN ACCORDANCE WITH THE TENDER.
7. ALL LANE CLOSURE REQUESTS MUST BE SUBMITTED THROUGH THE CONTRACT ADMINISTRATOR & ARE SUBJECT TO THE APPROVAL OF THE TRAFFIC MANAGEMENT BRANCH.
8. CONTRACTOR TO PROVIDE FLAGPERSONS IN ACCORDANCE WITH THE MTTC WHEN MOVING MATERIALS OR EQUIPMENT INTO OR OUT OF TRAFFIC.
9. CONTRACTOR SHALL PROVIDE FLAGPERSONS DURING ALL ASPHALT PLACEMENT AT THE PROJECT LIMITS TO MINIMIZE IMPACT TO TRAFFIC.
10. WHEN FLAGPERSONS ARE PRESENT, FLAGPERSON SIGNAGE MUST BE PLACED IN ACCORDANCE WITH THE MTTC.

11. WHEN FLAGPERSONS ARE NOT PRESENT, THE FLAGPERSON SIGNAGE MUST BE REMOVED OR HIDDEN.
12. PROVIDE TEMPORARY RAMPS & CROSSING WHERE DIRECTED BY CONTRACT ADMINISTRATOR & IN ACCORDANCE WITH THE ACCESSIBILITY PLAN FOR PEDESTRIAN CROSSINGS WHILE PERFORMING WORK IN THE INTERSECTIONS AND APPROACHES.
13. INSTALL WARNING FLAGS IN ACCORDANCE WITH MTTC 3.07.04 ON THE FIRST WARNING SIGN IN EACH LANE DROP TAPER.
14. WHERE A LANE IS REQUIRED TO BE CLOSED ON MAJOR INTERSECTING STREETS PERFORM THE WORK ON THE TIE-IN DURING OFF PEAK-HOURS.
15. TEMPORARY TRANSIT LANDINGS WILL BE REQUIRED FOR ANY TEMPORARY TRANSIT STOP RELOCATIONS IN ACCORDANCE WITH THE MTTC.
16. CONTRACTOR TO MONITOR & MAINTAIN THE TEMPORARY SIGNAGE FOR THE DURATION OF THE PROJECT & MODIFY AS NEEDED FOR EACH STAGE OF THE WORKS.
17. CONTRACTOR TO REMEDY ANY SIGNAGE DEEMED INSUFFICIENT OR INCORRECT AS DIRECTED BY THE CONTRACT ADMINISTRATOR OR TRAFFIC MANAGEMENT.
18. STAGE SIDEWALK WORK SUCH THAT PEDESTRIAN ACCESS IS MAINTAINED ALONG ONE SIDE OF EACH ROADWAY AT ALL TIMES.
19. PROVIDE ADVANCED CONSTRUCTION & SIDEWALK CLOSED/DETOUR SIGNAGE IN ACCORDANCE WITH THE MTTC. PROVIDE SMALL CONES IN CENTRE WHERE BARRICADES GUIDE PEDESTRIANS THROUGH THE CONSTRUCTION ZONE.

**PERFORM PHASE 1A CONCRETE RECONSTRUCTION WORKS INDEPENDENTLY OF OTHER WORKS ON BOTH HOLDSWORTH & EXMOUTH**

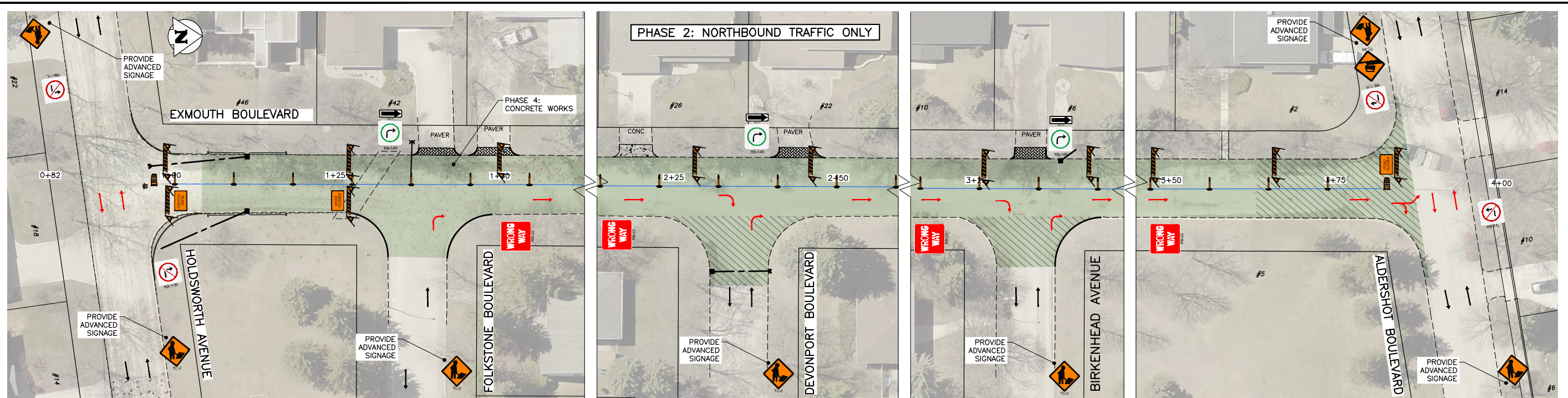
**TRAFFIC MANAGEMENT:  
PHASE 2B & 3 – MINOR REHAB**

1. MAINTAIN NATURAL TRAFFIC FLOW DURING EACH PHASE.
2. DURING PHASE 2B CLOSE EASTBOUND TRAFFIC FROM ALDERSHOT TO GLASTONBURY.
3. DURING PHASE 3 CLOSE WESTBOUND TRAFFIC FROM GLASTONBURY TO ALDERSHOT.
4. MAINTAIN ACCESS FOR RESIDENTS THROUGH ALL PHASES.
5. PROVIDE 1 WEEK NOTICE WHERE CLOSURES HAVE A MAJOR IMPACT TO A PRIVATE RESIDENCE.
6. COORDINATE WORKS IN THE HOLDSWORTH/EXMOUTH INTERSECTION WITH PHASE 4 & 5 ON EXMOUTH.

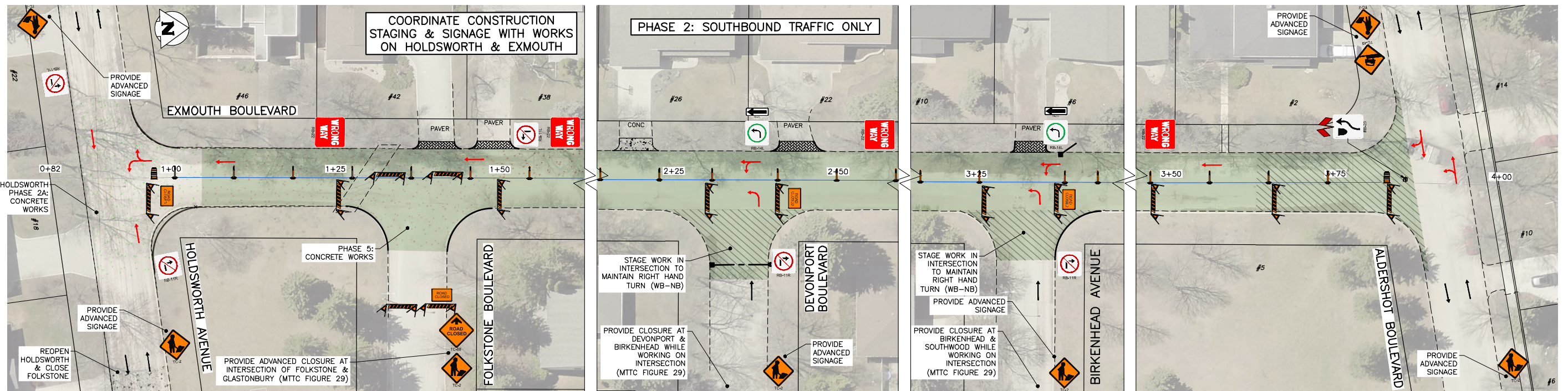
TENDER NO. 66-2023

PROJECT TITLE <b>2023 LOCAL STREET RENEWALS:          HOLDSWORTH AVE &amp; VARIOUS LOCATIONS</b>			
PHASING & SIGNAGE PLAN: HOLDSWORTH AVE: MINOR REHABILITATION PHASE 2B & 3		SHEET OF 11 OF 12 COMPUTER FILE NAME 22-0107-009 FIGURE F-0603	

NO.	REVISIONS	DATE	BY
B	ISSUED FOR REVIEW	23/04/05	GES
A	ISSUED FOR REVIEW	23/03/20	GES



**STAGING & SIGNAGE: PHASE 4 – SOUTHBOUND (LHS) LANE**  
SCALE: NTS



**STAGING & SIGNAGE: PHASE 5 – NORTHBOUND (RHS) LANE**  
SCALE: NTS

PEDESTRIANS  
 TEMPORARY TRAFFIC FLOW

**PROPERTY LIMITS DELINEATION**

DELINEATION OF PROPERTY LIMITS AS SHOWN ON THIS DWG DOES NOT REPRESENT A "LEGAL SURVEY". KGS GROUP MAKES NO REPRESENTATION OR WARRANTY AS TO THE ACCURACY OF PROPERTY LIMITS DELINEATED ON THIS DWG, NOR ON THE DIMENSIONAL ACCURACY OF DWG FEATURES RELATIVE TO THOSE PROPERTY LIMITS.

**METRIC**

WHOLE NUMBERS INDICATE MILLIMETRES  
DECIMALIZED NUMBERS INDICATE METRES

**GENERAL NOTES:**

- ALL TEMPORARY TRAFFIC CONTROL TO BE IN ACCORDANCE WITH THE LATEST MANUAL OF TEMPORARY TRAFFIC CONTROL ON CITY STREETS (MITC) AT TENDER.
- PERFORM WORK IN PHASES & STAGES TO MINIMIZE IMPACT TO TRAFFIC FLOW AND ACCESS TO RESIDENCES.
- NOT ALL REQUIRED SIGNAGE IS SHOWN FOR EACH PHASE & SUB-PHASE. ADDITIONAL SIGNAGE TO PROVIDED IN ACCORDANCE WITH THE MITC.
- THE PERMANENT POSTED SPEED LIMIT OF 50 KM/HR SHALL BE USED FOR ALL TAPER LENGTHS AND OTHER CRITERIA IN THE MITC.
- CONTRACTOR SHALL SUBMIT THE PEDESTRIAN ACCESSIBILITY PLAN FOR REVIEW & ACCEPTANCE BY THE CONTRACT ADMINISTRATOR.
- CONTRACTOR SHALL BE RESPONSIBLE FOR ALL PERMITS, & THE SUPPLY, PLACEMENT & MAINTENANCE OF ALL TEMPORARY TRAFFIC CONTROL SIGNAGE IN ACCORDANCE WITH THE TENDER.
- ALL LANE CLOSURE REQUESTS MUST BE SUBMITTED THROUGH THE CONTRACT ADMINISTRATOR & ARE SUBJECT TO THE APPROVAL OF THE TRAFFIC MANAGEMENT BRANCH.
- CONTRACTOR TO PROVIDE FLAGPERSONS IN ACCORDANCE WITH THE MITC WHEN MOVING MATERIALS OR EQUIPMENT INTO OR OUT OF TRAFFIC.
- CONTRACTOR SHALL PROVIDE FLAGPERSONS DURING ALL ASPHALT PLACEMENT AT THE PROJECT LIMITS TO MINIMIZE IMPACT TO TRAFFIC.
- WHEN FLAGPERSONS ARE PRESENT, FLAGPERSON SIGNAGE MUST BE PLACED IN ACCORDANCE WITH THE MITC.

- WHEN FLAGPERSONS ARE NOT PRESENT, THE FLAGPERSON SIGNAGE MUST BE REMOVED OR HIDDEN.
- PROVIDE TEMPORARY RAMPS & CROSSING WHERE DIRECTED BY CONTRACT ADMINISTRATOR & IN ACCORDANCE WITH THE ACCESSIBILITY PLAN FOR PEDESTRIAN CROSSINGS WHILE PERFORMING WORK IN THE INTERSECTIONS AND APPROACHES.
- INSTALL WARNING FLAGS IN ACCORDANCE WITH MITC 3.07.04 ON THE FIRST WARNING SIGN IN EACH LANE DROP TAPER.
- WHERE A LANE IS REQUIRED TO BE CLOSED ON MAJOR INTERSECTING STREETS PERFORM THE WORK ON THE TIE-IN DURING OFF PEAK-HOURS.
- TEMPORARY TRANSIT LANDINGS WILL BE REQUIRED FOR ANY TEMPORARY TRANSIT STOP RELOCATIONS IN ACCORDANCE WITH THE MITC.
- CONTRACTOR TO MONITOR & MAINTAIN THE TEMPORARY SIGNAGE FOR THE DURATION OF THE PROJECT & MODIFY AS NEEDED FOR EACH STAGE OF THE WORKS.
- CONTRACTOR TO REMEDY ANY SIGNAGE DEEMED INSUFFICIENT OR INCORRECT AS DIRECTED BY THE CONTRACT ADMINISTRATOR OR TRAFFIC MANAGEMENT.
- STAGE SIDEWALK WORK SUCH THAT PEDESTRIAN ACCESS IS MAINTAINED ALONG ONE SIDE OF EACH ROADWAY AT ALL TIMES.
- PROVIDE ADVANCED CONSTRUCTION & SIDEWALK CLOSED/DETOUR SIGNAGE IN ACCORDANCE WITH THE MITC, PROVIDE SMALL CONES IN CENTRE WHERE BARRICADES GUIDE PEDESTRIANS THROUGH THE CONSTRUCTION ZONE.

**TRAFFIC MANAGEMENT: EXMOUTH MINOR REHABILITATION PHASE 4 & 5**

- PERFORM WORK LANE-AT-A-TIME IN TWO PHASES.
- DURING PHASE 4, MAINTAIN CLOSURE FROM PHASE 3 OF EXMOUTH FROM FOLKSTONE BLVD TO HOLDSWORTH.
- DURING PHASE 4 MAINTAIN NORTHBOUND TRAFFIC FLOW FROM FOLKSTONE BLVD TO ALDERSHOT BLVD.
- REOPEN HOLDSWORTH AVE IN PHASE 5 TO PROVIDE NORTHBOUND CONTRA-FLOW TRAFFIC IN THE WEST LANE FROM HOLDSWORTH AVE TO ALDERSHOT BLVD.
- DURING PHASE 5 CLOSE FOLKSTONE BLVD FROM EXMOUTH AVE TO GLASTONBURY BLVD.
- STAGE WORK TO MAINTAIN A WESTBOUND TO NORTHBOUND RIGHT-TURN MOVEMENT IN BOTH THE DEVONPORT BLVD AND BIRKENHEAD AVE INTERSECTIONS.

TENDER NO. 66-2023

<b>THE CITY OF WINNIPEG</b> PUBLIC WORKS DEPARTMENT ENGINEERING DIVISION														
PROJECT TITLE <b>2023 LOCAL STREET RENEWALS:          HOLDSWORTH AVE &amp; VARIOUS LOCATIONS</b>		SHEET OF <b>12 12</b>												
PHASING & SIGNAGE PLAN: EXMOUTH AVE: MINOR REHABILITATION STAGE 4 & 5		COMPUTER FILE NAME 22-0107-009 FIGURE F-0701												
<table border="1"> <thead> <tr> <th>NO.</th> <th>REVISIONS</th> <th>DATE</th> <th>BY</th> </tr> </thead> <tbody> <tr> <td>B</td> <td>ISSUED FOR REVIEW</td> <td>23/04/05</td> <td>GES</td> </tr> <tr> <td>A</td> <td>ISSUED FOR REVIEW</td> <td>23/03/20</td> <td>GES</td> </tr> </tbody> </table>	NO.	REVISIONS	DATE	BY	B	ISSUED FOR REVIEW	23/04/05	GES	A	ISSUED FOR REVIEW	23/03/20	GES		
NO.	REVISIONS	DATE	BY											
B	ISSUED FOR REVIEW	23/04/05	GES											
A	ISSUED FOR REVIEW	23/03/20	GES											

Files: C:\Users\jgibson\OneDrive\Desktop\FMS\22-0107-009\22-0107-009\_C1\_F-ALL\_Signage Figures - TabF-0701 Plotted By: GSmallley 23/04/05 [Wed 4:57pm]  
 All (8/1/2024) / Plot Scale: 1:1