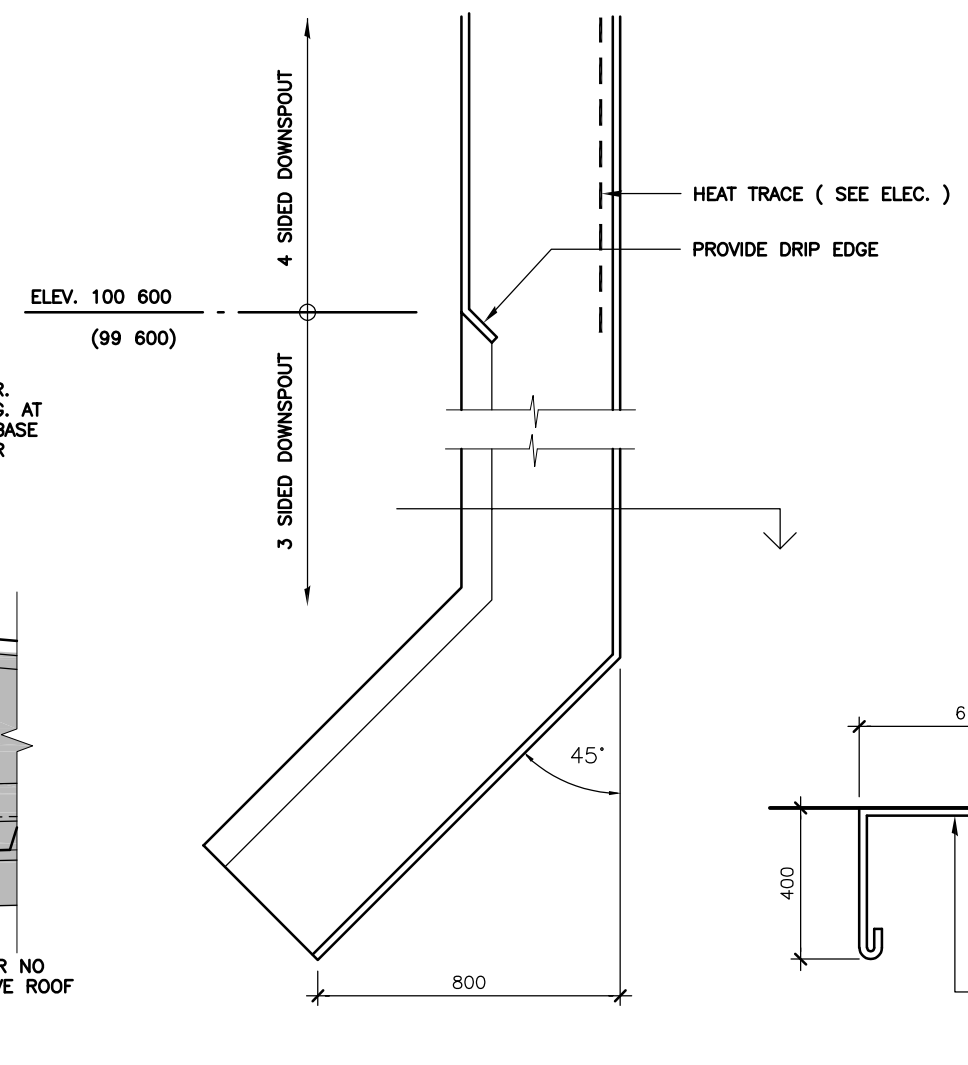
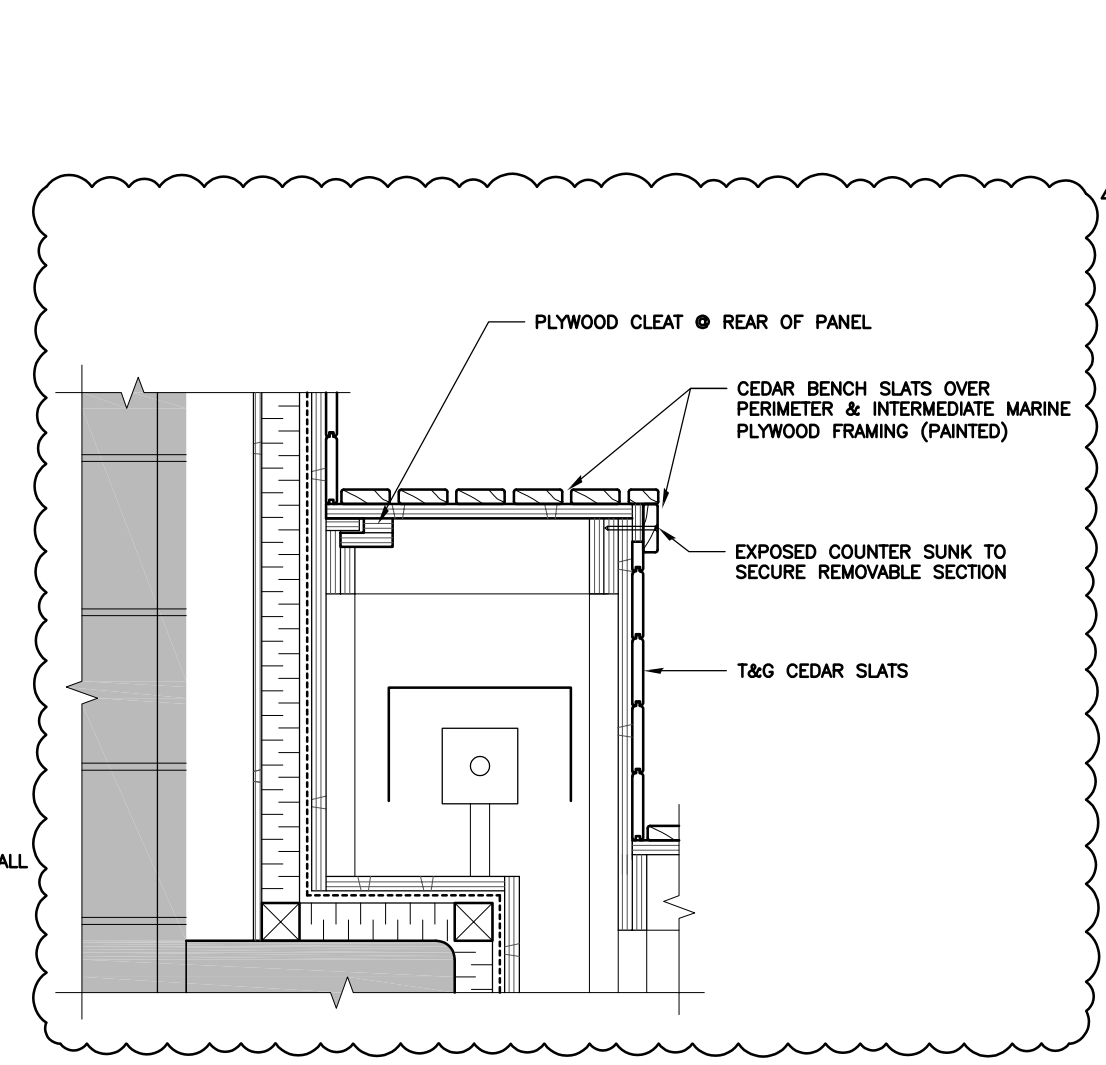


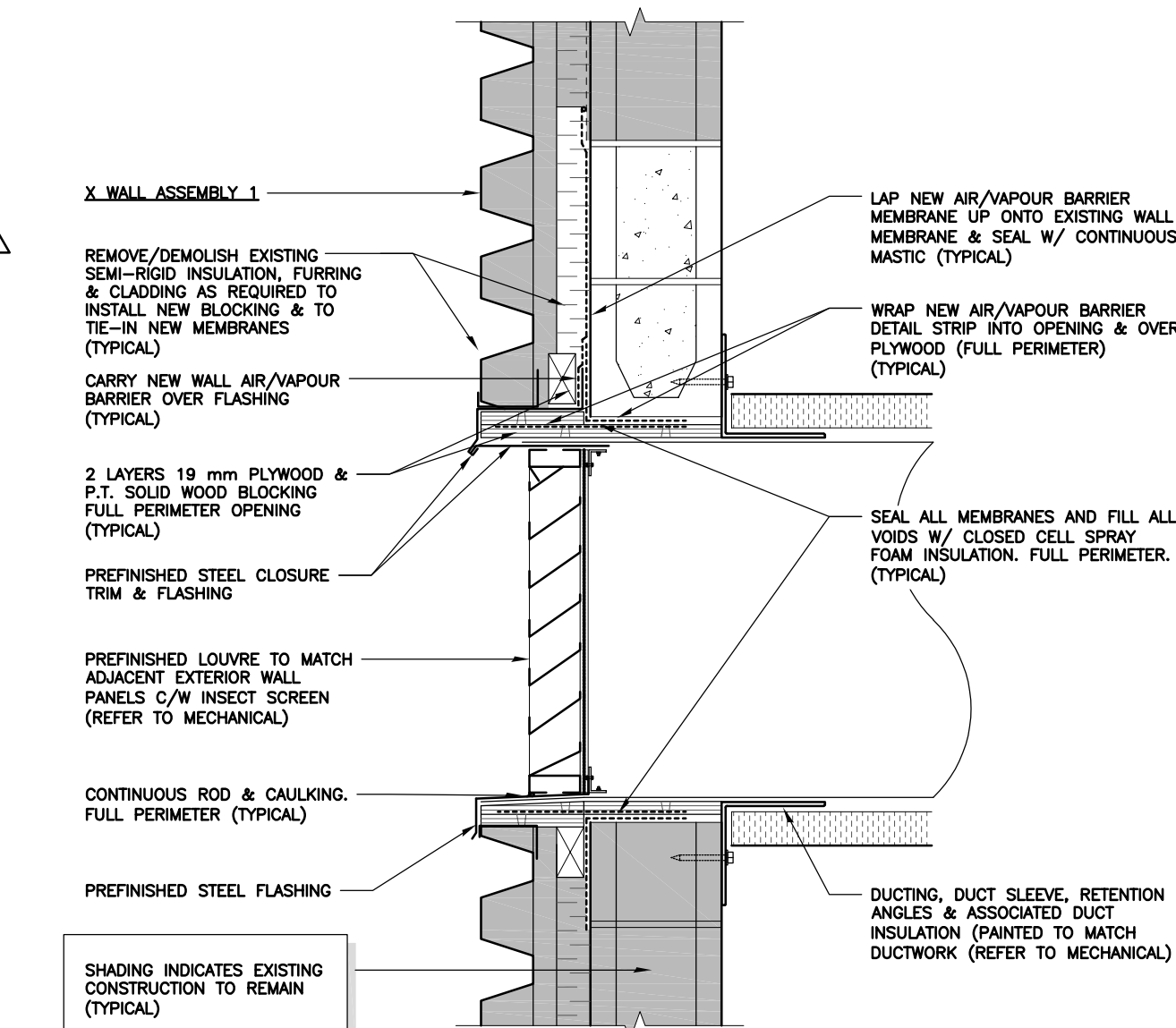
SCUPPER BOX @ OVERFLOW SCUPPER
SCALE 1:10



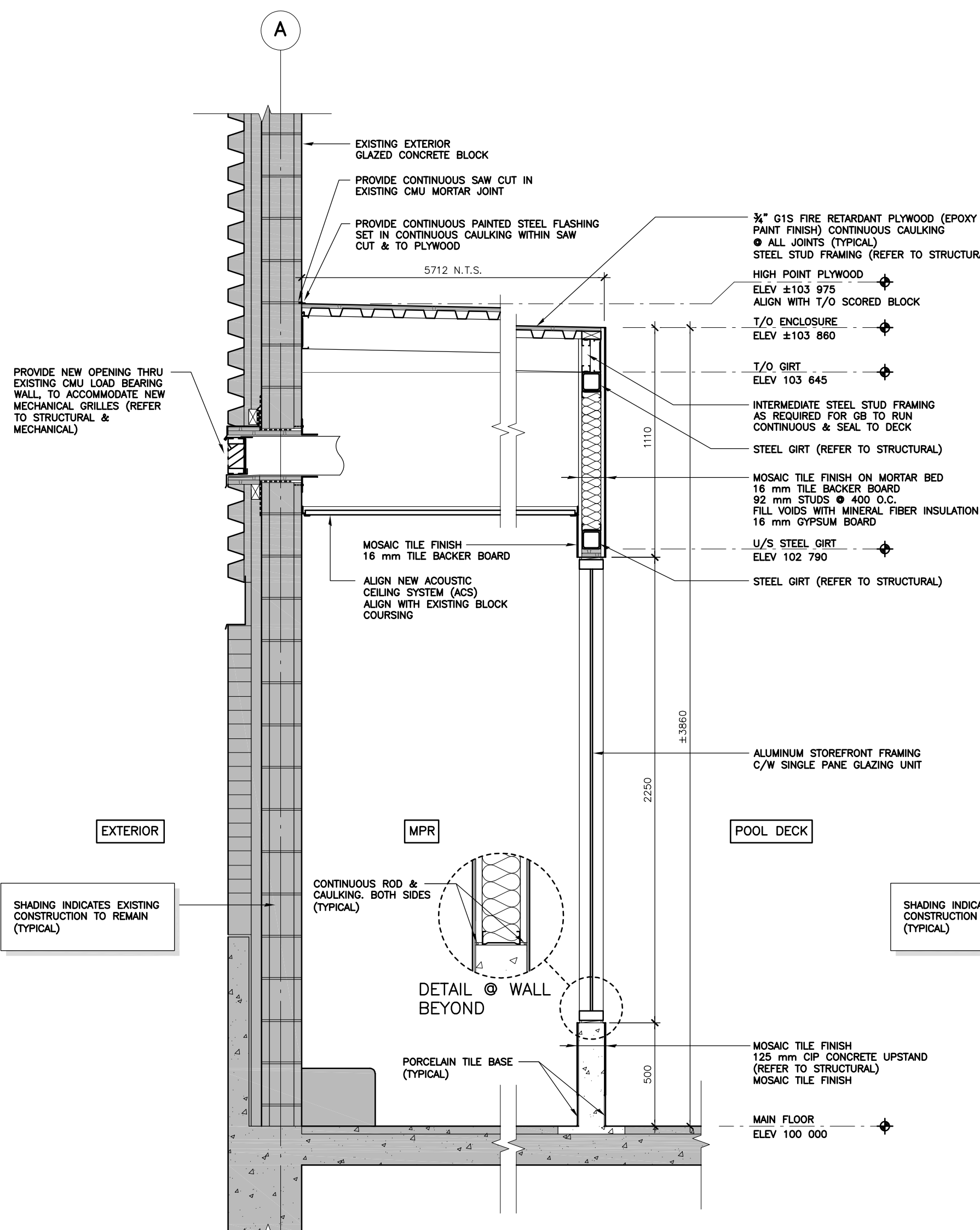
TYPICAL DOWNSPOUT
SCALE 1:5



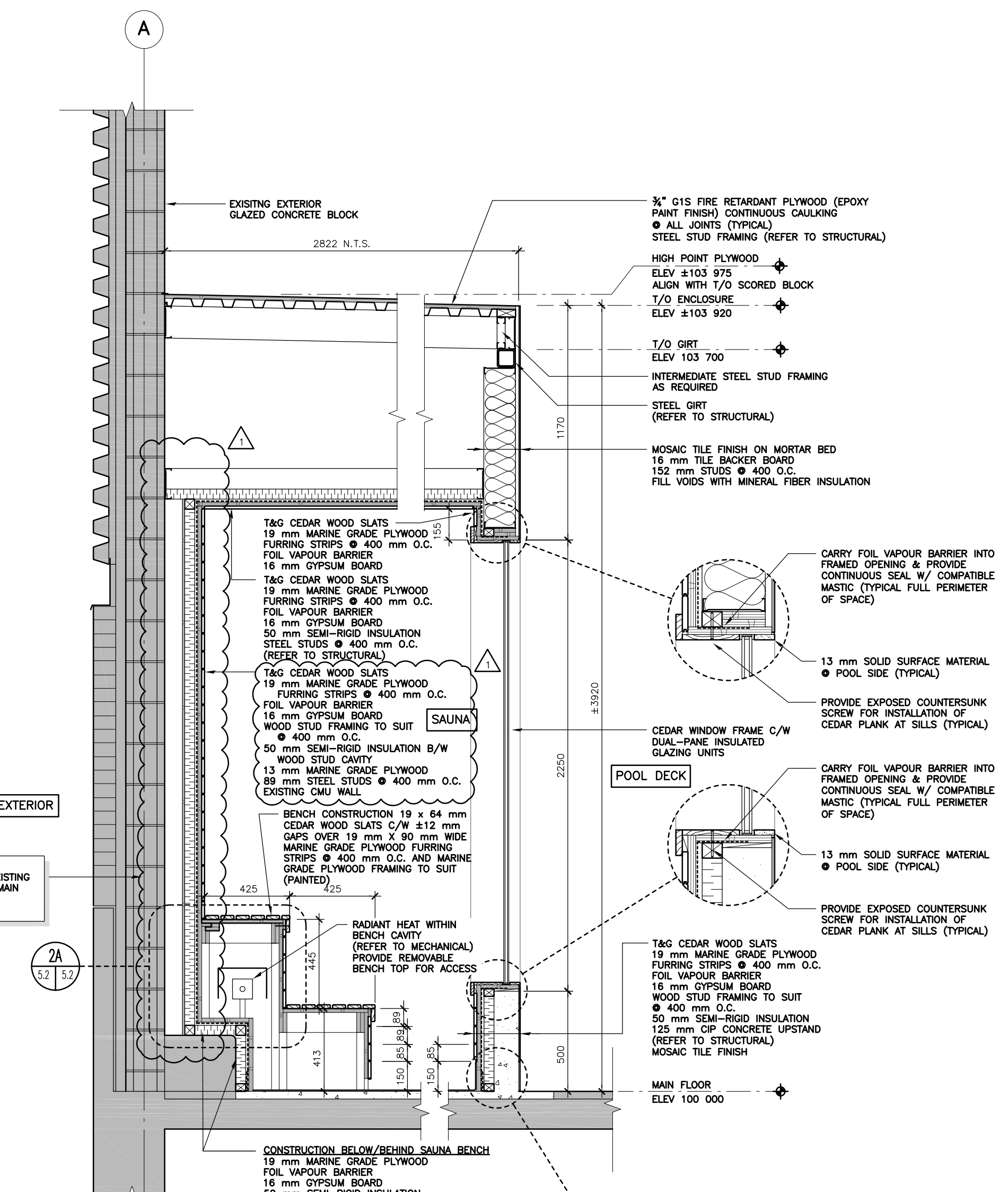
REMOVABLE BENCH TOP DETAIL @ SAUNA
SCALE 1:10



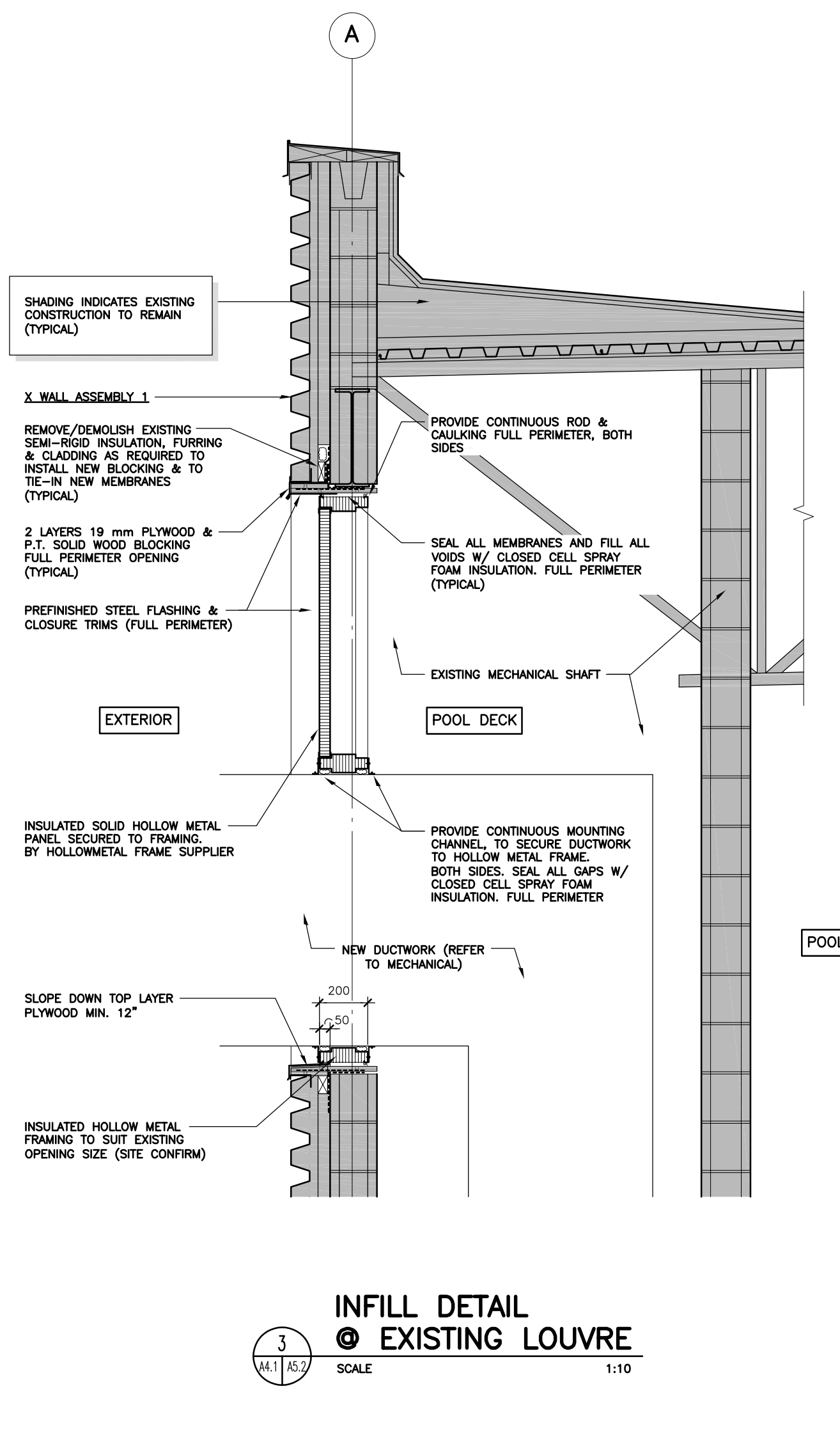
DUCT PENETRATION @ EXTERIOR WALL
SCALE 1:10



SECTION AT MPR
SCALE 1:20



SECTION AT DRY SAUNA
SCALE 1:20

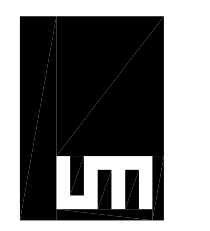


INFILL DETAIL @ EXISTING LOUVER
SCALE 1:10

1	23/01/2024	ISSUED FOR ADDENDUM 2	JF
0	22/12/2023	ISSUED FOR CONSTRUCTION	CF
No.	Date	Issue / Revision	By

Drawn By: DN
Printing Date: JAN. 23, 2024

Drawings and specifications, as Instruments of service are the property of the architects, the copyright in the same being reserved to them. No reproduction may be made without the permission of the architects, and when made, must bear their names. All prints to be returned.
The contractor is to verify dimensions and data noted herein with conditions on the site and is held responsible for reporting any discrepancy to the architects for adjustment.



LM Architectural Group
500-136 Market Ave
Winnipeg, Manitoba, Canada R3B 0P4
t: (204) 942.0681 f: (204) 943.8676
www.lm-architects.com

**CITY OF WINNIPEG
BONIVITAL POOL RENEWAL**

1215 Archibald St, Winnipeg, MB.

WALL SECTIONS