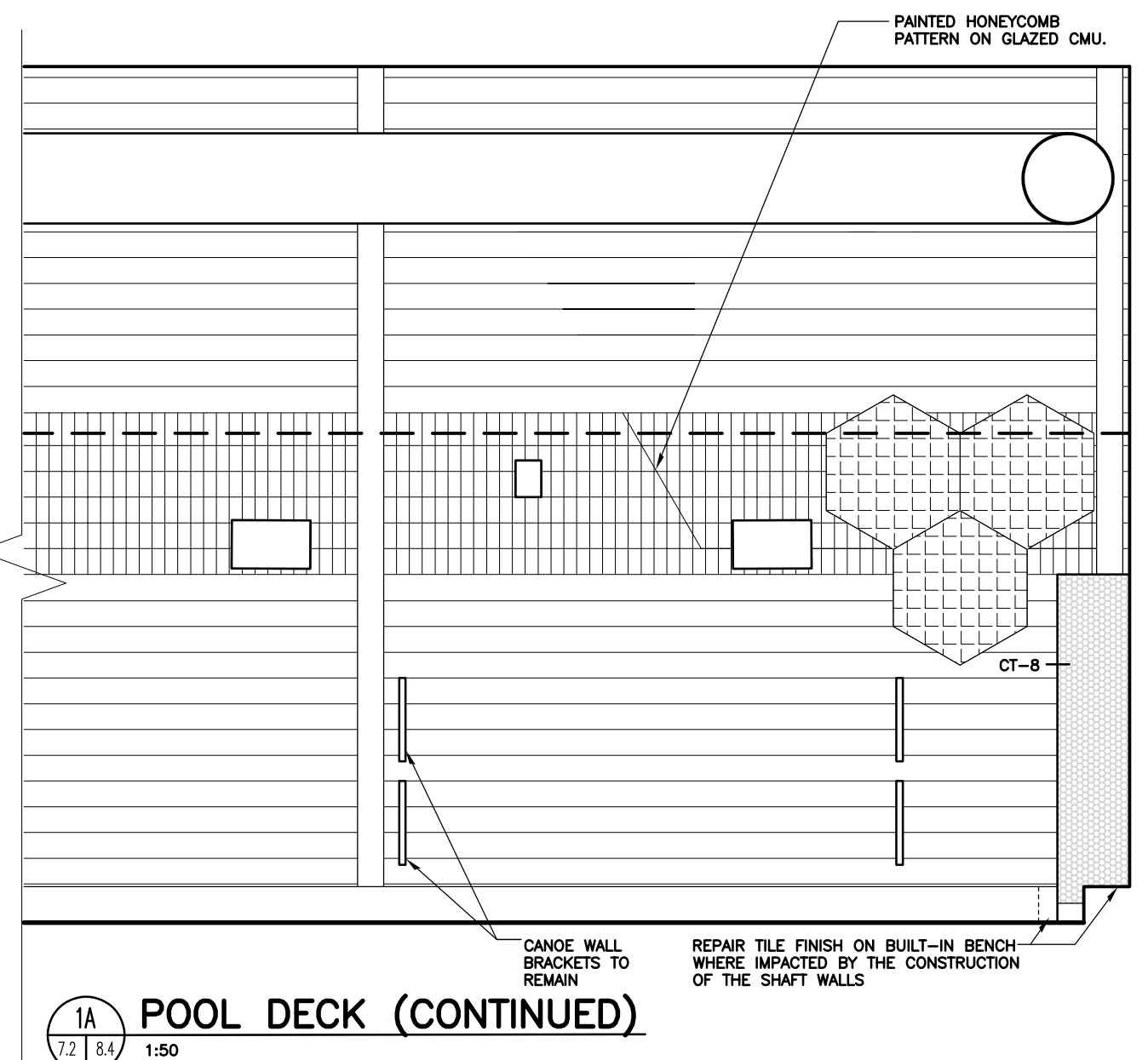
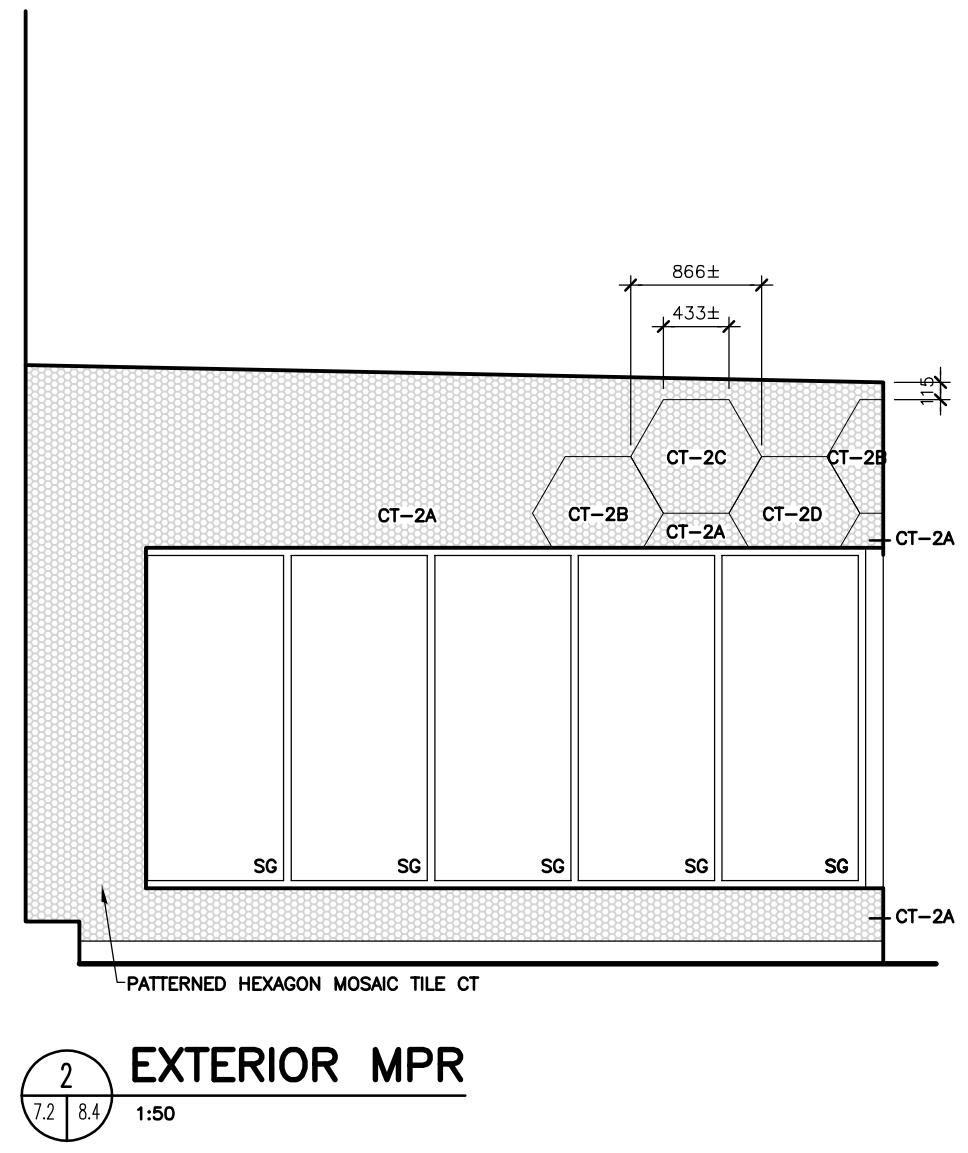


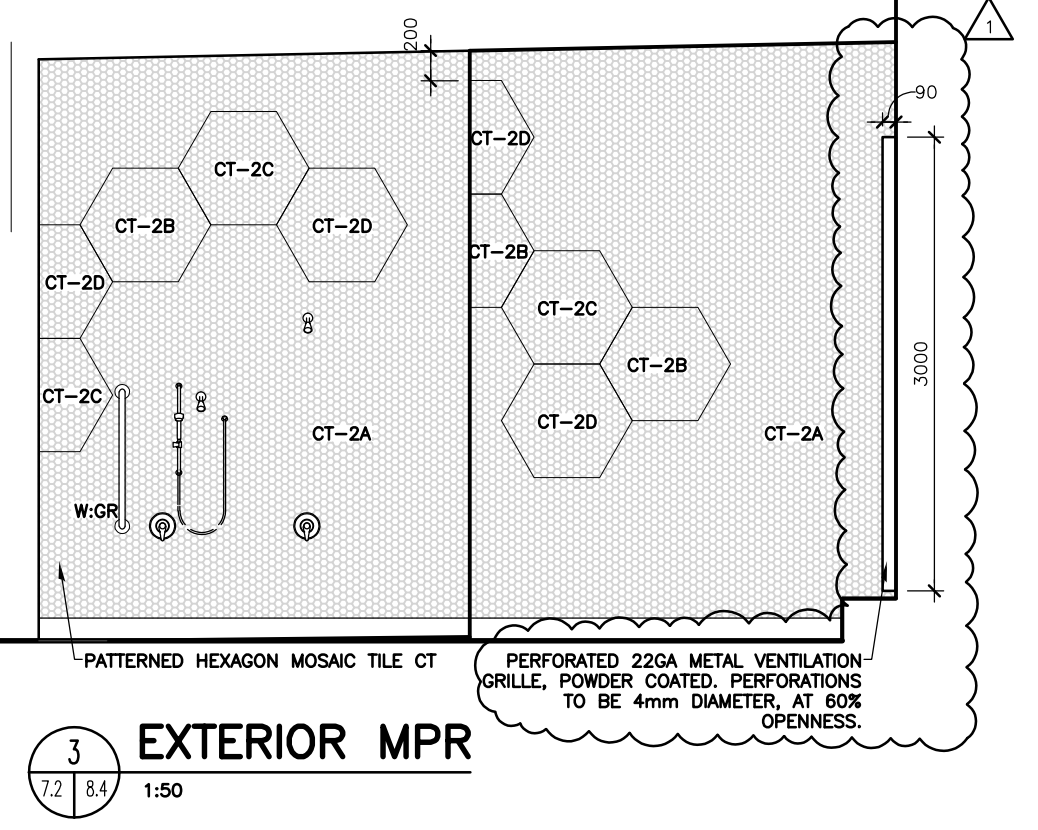
1 POOLDECK
 7.2 | 8.4 | 1:50



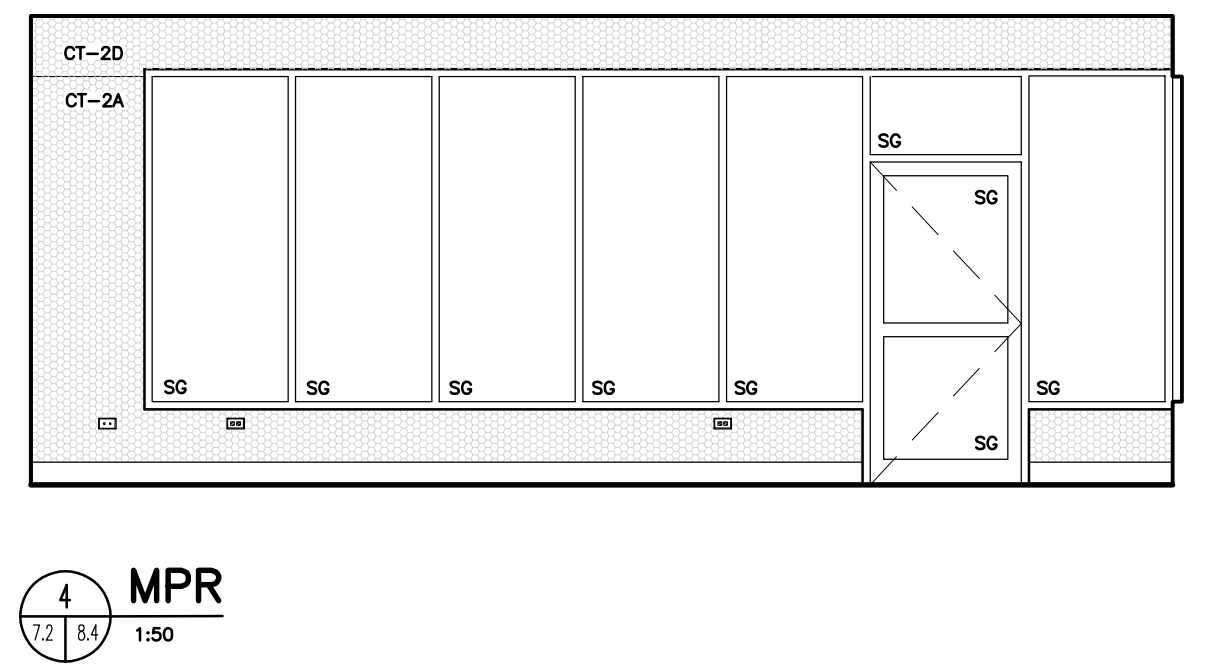
1A POOL DECK (CONTINUED)
 7.2 | 8.4 | 1:50



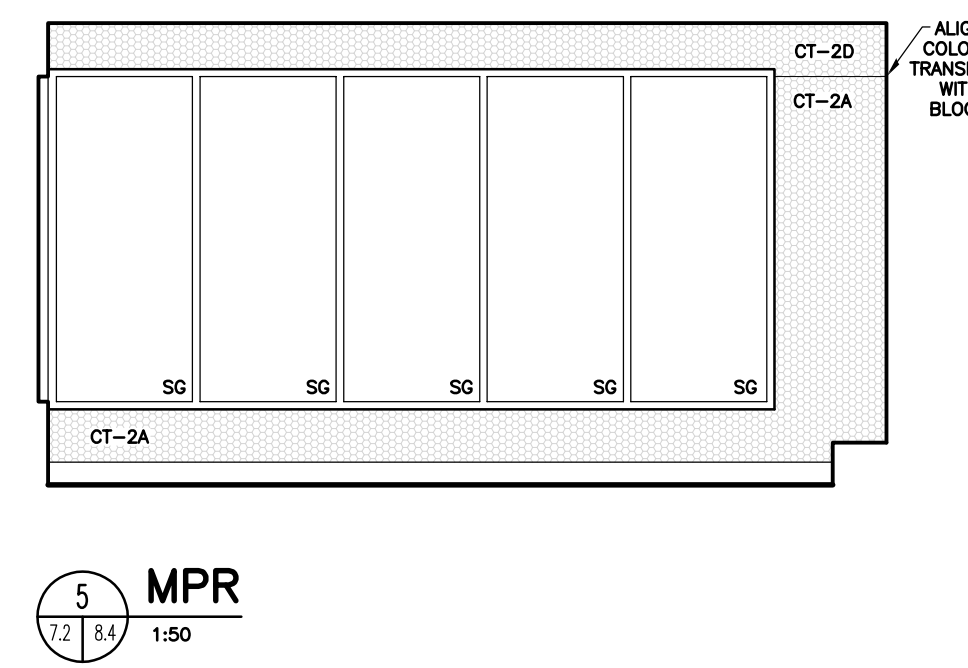
2 EXTERIOR MPR
 7.2 | 8.4 | 1:50



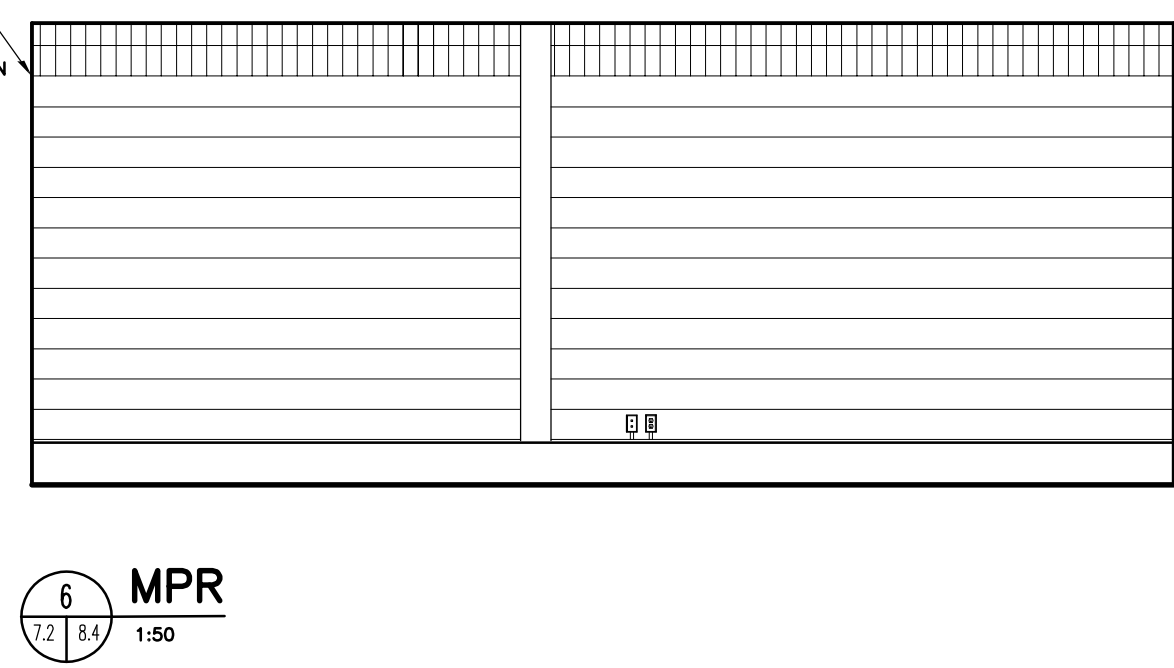
3 EXTERIOR MPR
 7.2 | 8.4 | 1:50



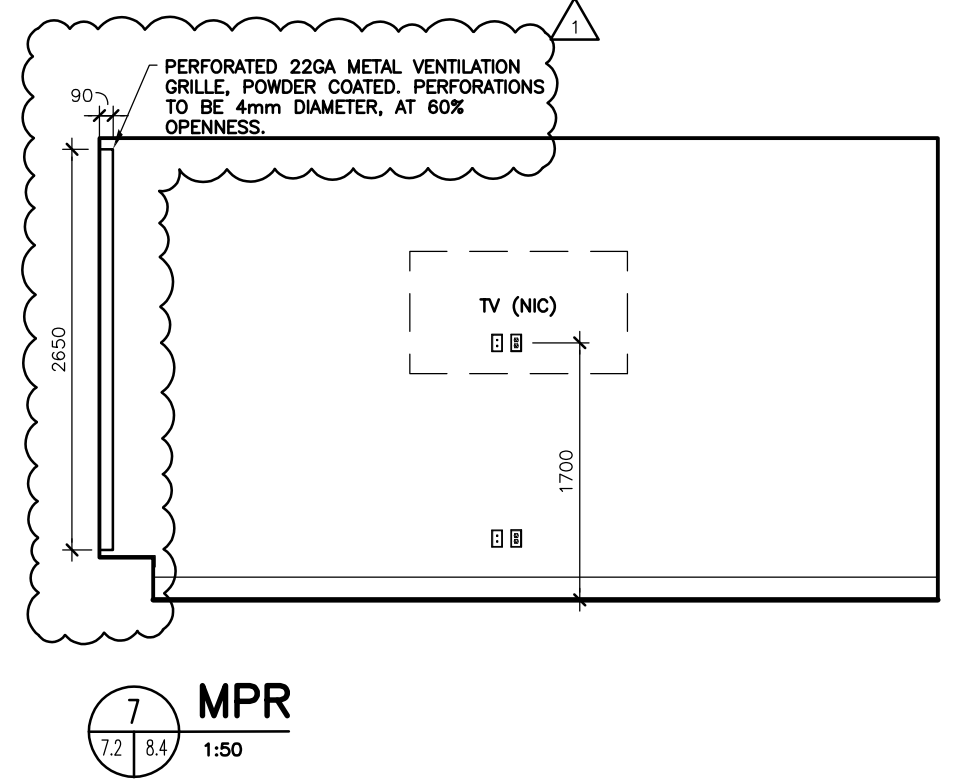
4 MPR
 7.2 | 8.4 | 1:50



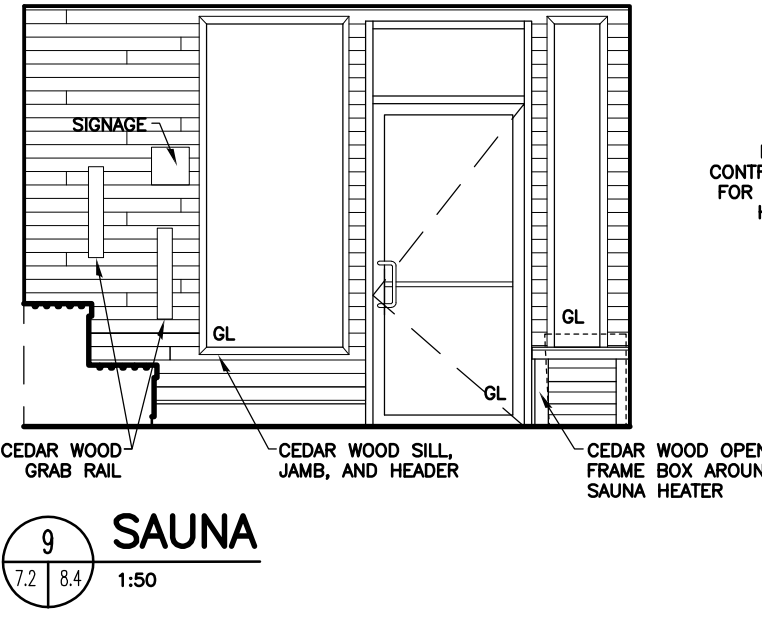
5 MPR
 7.2 | 8.4 | 1:50



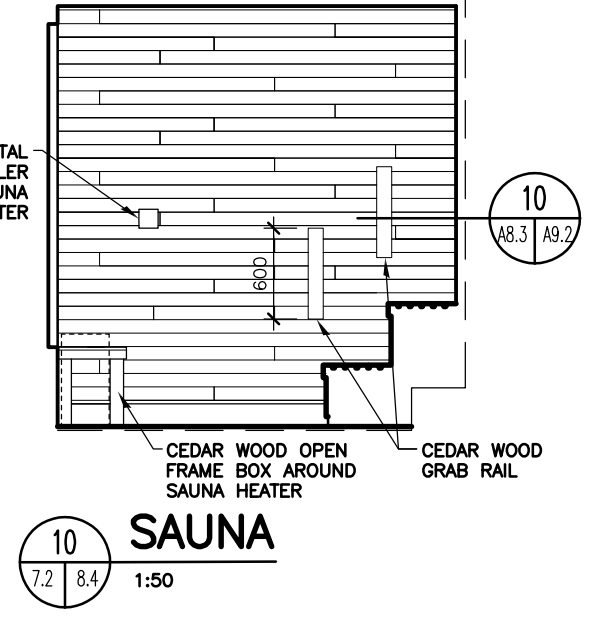
6 MPR
 7.2 | 8.4 | 1:50



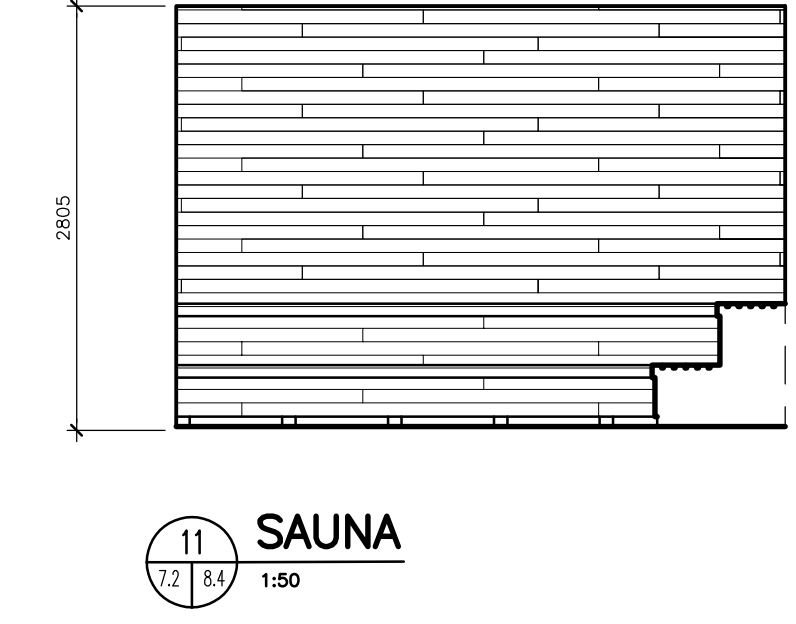
7 MPR
 7.2 | 8.4 | 1:50



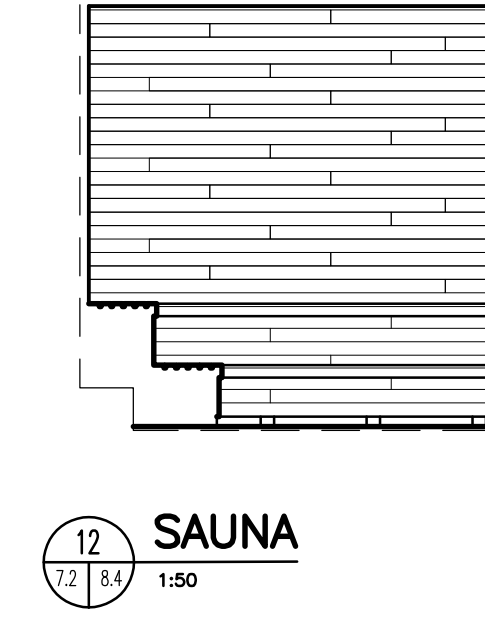
9 SAUNA
 7.2 | 8.4 | 1:50



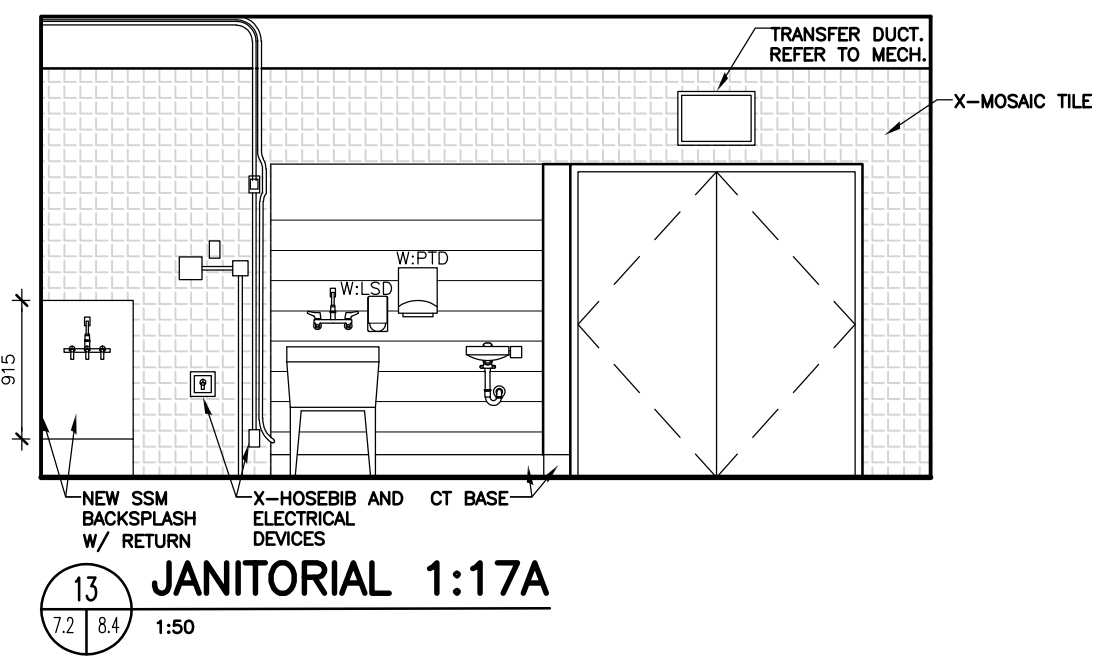
10 SAUNA
 7.2 | 8.4 | 1:50



11 SAUNA
 7.2 | 8.4 | 1:50



12 SAUNA
 7.2 | 8.4 | 1:50



13 JANITORIAL 1:17A
 7.2 | 8.4 | 1:50

GENERAL NOTES

- FURNITURE AND EQUIPMENT THAT ARE NOT IN CONTRACT (NIC) ARE INDICATED WITH A DASHED LINE, AND ARE SHOWN FOR INFORMATION PURPOSES ONLY EXCEPT WHERE OTHERWISE INDICATED.
- PROVIDE WOOD BLOCKING CONCEALED IN WALL FOR ALL FURNITURE, EQUIPMENT AND ACCESSORIES MOUNTED AND/OR SECURED TO WALL. TYPICAL OF ALL IN CONTRACT, NOT IN CONTRACT (NIC) AND OWNER FURNISHED PRODUCTS (OFP), CONFIRM EXACT LOCATION OF BLOCKING WITH CONSULTANT PRIOR TO INSTALLATION.

1	23/01/2024	ISSUED FOR ADDENDUM 2	JF
0	22/12/2023	ISSUED FOR CONSTRUCTION	CF
No.	Date	Issue / Revision	By

Drawn By: JF
 Printing Date: JAN. 23, 2024

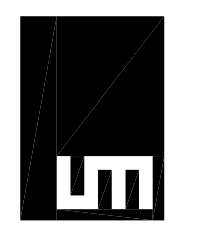
WALL MOUNTED ACCESSORIES LEGEND

REFER TO SPECIFICATIONS SECTION 10 28 00

W/ACS	ADULT CHANGE STATION
W/AHD	AIR HAND DRYER
W/BCS	BABY CHANGE STATION
W/FDS	FOLD DOWN SEAT
W/FMF	FRAMED MIRROR
W/GR#	GRAB RAIL
W/HD	HAND DRYER
W/HSD	HAND SANITIZER DISPENSER
W/LSD	LIQUID SOAP DISPENSER
W/MBR	MOP BROOM RACK
W/NTW	NAPKIN/TAMPON WASTE
W/PTD	PAPER TOWEL DISPENSER
W/SD	SHARPS DISPOSAL
W/SOR	SHOWER CURTAIN ROD (C/W CURTAIN)
W/SND	SANITARY NAPKIN DISPENSER
W/SRH	SAFETY ROSE HOOK
W/SSS	STAINLESS STEEL SHELF
W/TPD	TOILET PAPER DISPENSER
W/UM	UNFRAMED MIRROR

Drawings and specifications, as instruments of service are the property of the architects, the copyright in the same being reserved to them. No reproduction may be made without the permission of the architects, and when made, must bear their names. All prints to be returned.

The contractor is to verify dimensions and data noted herein with conditions on the site and is held responsible for reporting any discrepancy to the architects for adjustment.



LM Architectural Group
 500-136 Market Ave
 Winnipeg, Manitoba Canada R3B 0P4
 t: (204) 942.0681 f: (204) 943.8676
 www.lm-architects.com

ABBREVIATIONS LEGEND

ADO	AUTOMATIC DOOR OPERATOR
ECS	EMERGENCY CALL SWITCH
FAP	FIRE ALARM PANEL
FD	FLOOR DRAIN
FE	FIRE-EXTINGUISHER
LF	LIGHT FIXTURE
LG	LAMINATED GLASS
LK	LOCKERS
NIC	NOT IN CONTRACT
P.LAM	PLASTIC LAMINATE
SG	SAFETY GLASS
SSM	SOLID SURFACE MATERIAL
TV	TELEVISION
TYP	TYPICAL
W/M	WALL MOUNTED
X	EXISTING

**CITY OF WINNIPEG
 BONIVITAL POOL RENEWAL**

1215 Archibald St, Winnipeg, MB.

INTERIOR ELEVATIONS