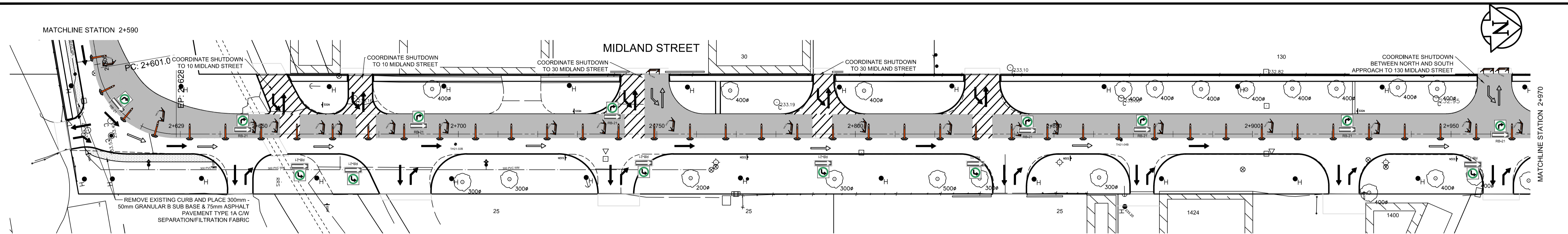
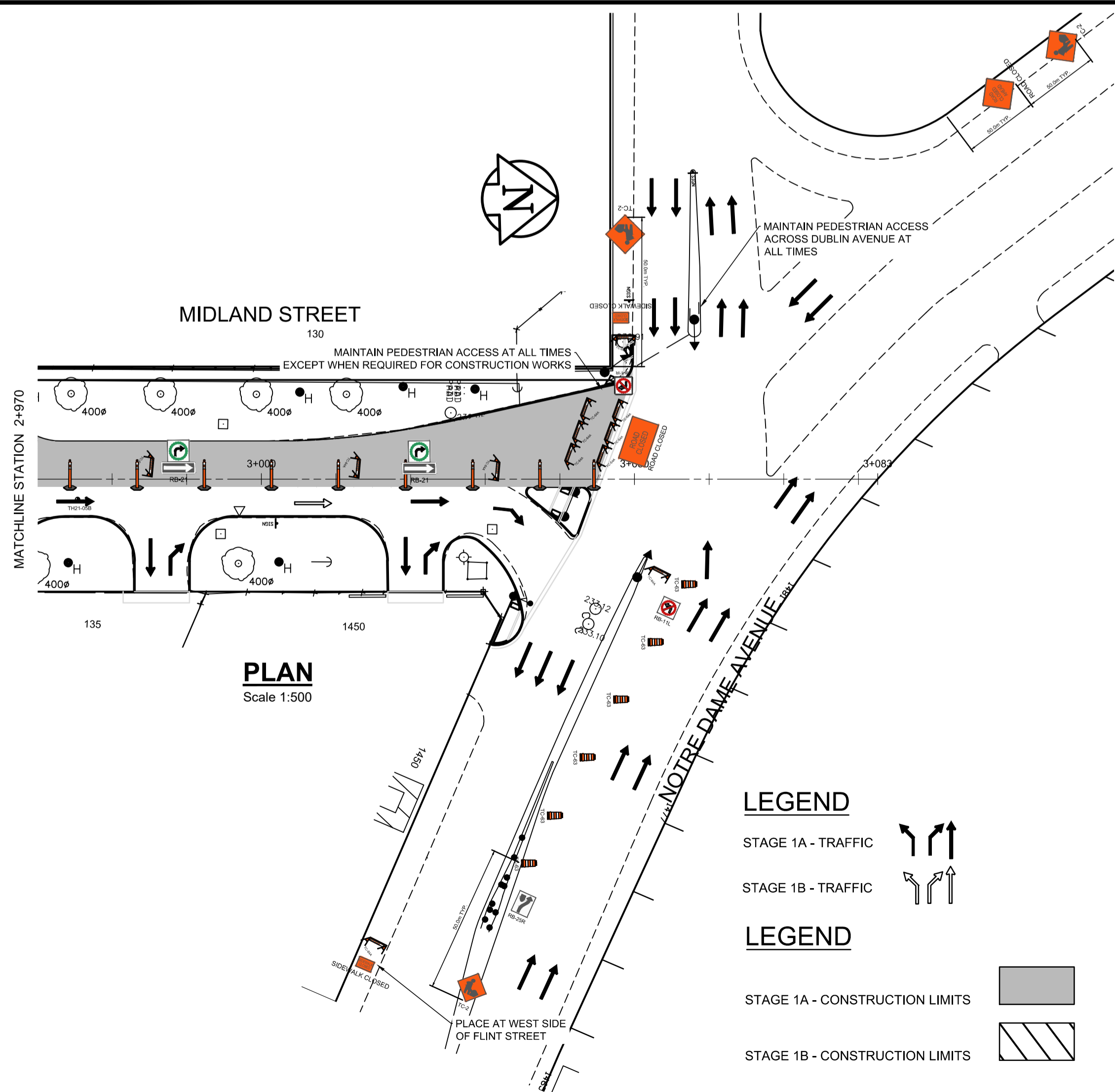


PLAN
Scale 1:500



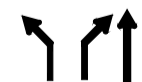
PLAN
Scale 1:500



PLAN
Scale 1:500

LEGEND

STAGE 1A - TRAFFIC



STAGE 1B - TRAFFIC

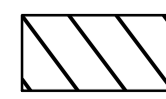


LEGEND

STAGE 1A - CONSTRUCTION LIMITS



STAGE 1B - CONSTRUCTION LIMITS



**ENGINEERS
GEO-SCIENTISTS
MANITOBA**
Certificate of Authorization
AECOM Canada Ltd.
No. 4671 Date: 02/26/24

METRIC
WHOLE NUMBERS INDICATE MILLIMETRES
DECIMALIZED NUMBERS INDICATE METRES

B.M. ELEV.					
DESIGNED BY	SS	CHECKED BY	BC		
DRAWN BY	SS	APPROVED BY	RC		
HOR. SCALE:	AS SHOWN	RELEASED FOR CONSTRUCTION BY:			
VERTICAL:					
0 ISSUED FOR TENDER	02/26/24	RC			
NO. REVISIONS	DATE	BY	DATE	02/13/23	DATE

AECOM

ENGINEER'S SEAL

CONSULTANT DRAWING NO.
CT-01

THE CITY OF WINNIPEG
PUBLIC WORKS DEPARTMENT
ENGINEERING DIVISION

2024 INDUSTRIAL STREET
RENEWAL PROGRAM

MIDLAND STREET & SASKATCHEWAN AVENUE -
EMPRESS STREET TO NOTRE DAME AVENUE
CONCRETE PAVEMENT RECONSTRUCTION
CONSTRUCTION STAGING AND TRAFFIC MANAGEMENT PLAN - STAGE 1

CITY DRAWING NUMBER
SHEET 01 OF 11

- NOTES:
1. ALL TEMPORARY SIGNAGE AND TRAFFIC CONTROL TO BE IN ACCORDANCE WITH THE LATEST EDITION OF THE MANUAL OF TEMPORARY TRAFFIC CONTROL ON CITY STREETS.
 2. CONTRACTOR TO MAINTAIN VEHICULAR ACCESS TO ALL SIDE STREETS AND PRIVATE PROPERTIES AT ALL TIMES (INCLUDING LEFT TURNS UNLESS SHOWN ON THE DRAWINGS), ANY DISRUPTION TO BE APPROVED BY THE CONTRACT ADMINISTRATOR AND CONTRACTOR TO ADVISE OWNER.
 3. ALL UNDERGROUND WORK TO BE COMPLETED PRIOR TO ROAD WORK AND TEMPORARY SIGNAGE TO BE PLACED IN ACCORDANCE WITH WORK.
 4. CONTRACTOR IS PERMITTED TO COMPLETE CONTINUOUS EXCAVATION AND BACKFILL WITH SUB-BASE MATERIAL PROVIDED ACCESS IS MAINTAINED TO ALL PROPERTIES. CONSTRUCTION OF CONCRETE PAVEMENT WILL REQUIRE STAGING AS NOTED ON THE DRAWINGS.
 5. SIDEWALK CLOSED SIGNAGE TO BE PLACED ON THE SOUTH SIDE OF DUBLIN AVENUE AT THE WEST SIDE OF MIDLAND STREET AND ON THE SOUTH SIDE OF NOTRE DAME AVENUE AT THE WEST SIDE OF FLINT STREET WHEN THE SOUTH SIDE EAST-WEST PEDESTRIAN CROSSING IS CLOSED AT MIDLAND STREET AND NOTRE DAME AVENUE.
 6. CONTRACT ADMINISTRATOR TO CONTACT THE TRAFFIC SIGNALS BRANCH MINIMUM 3 BUSINESS DAYS IN ADVANCE TO DISABLE THE WESTBOUND LEFT TURN ON NOTRE DAME AVENUE AT MIDLAND STREET AND THE SOUTH SIDE PEDESTRIAN CROSSING ON NOTRE DAME AVENUE AT MIDLAND STREET (WHEN PEDESTRIAN CROSSING IS CLOSED).
 7. TRAFFIC SERVICES TO PLACE ADVANCE WARNING SIGNAGE FOR THE DIRECTIONAL CLOSURE OF MIDLAND STREET AND SASKATCHEWAN AVENUE.