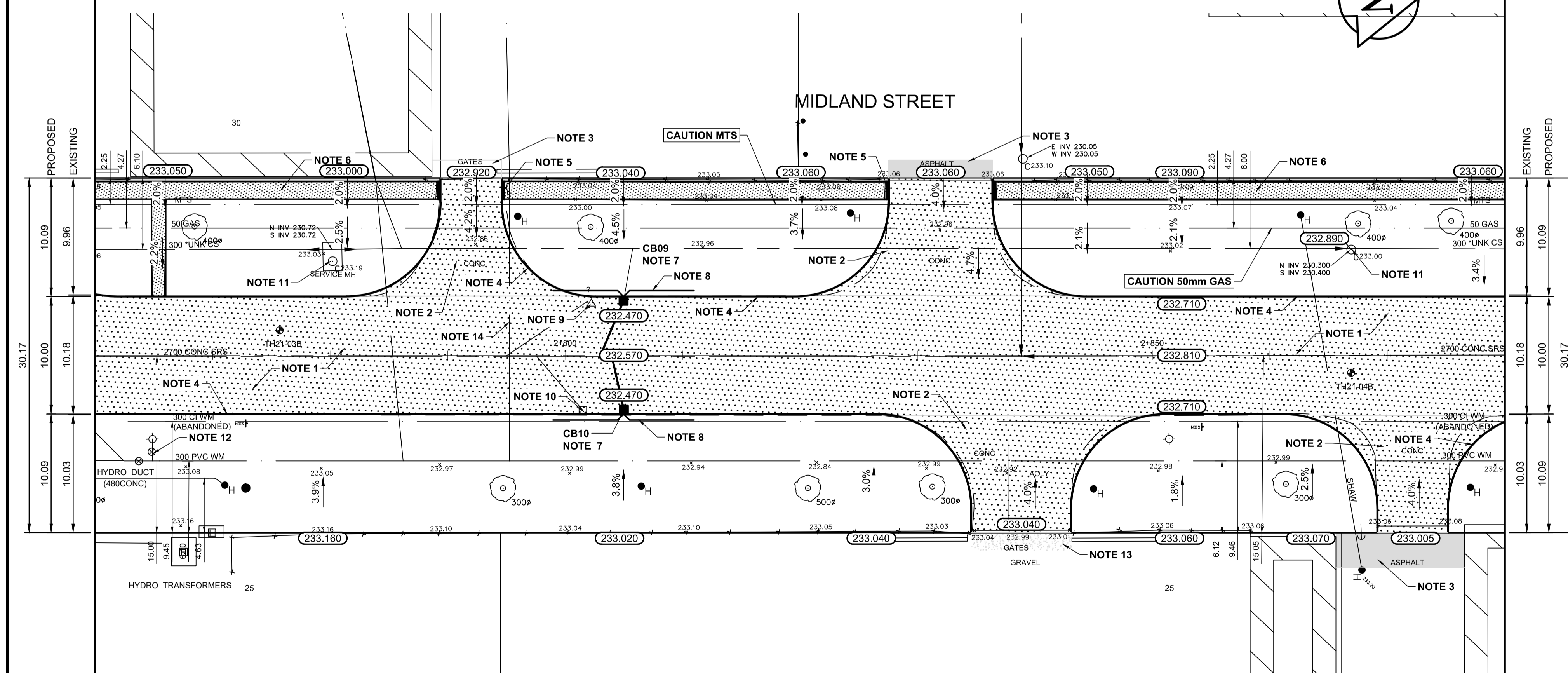
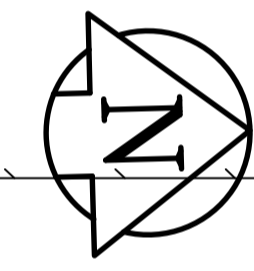


250mm PLAIN DOWELLED CONCRETE PAVEMENT  
 100mm BASE COURSE MATERIAL - GRANULAR A LESTONE  
 150mm SUB BASE MATERIAL - 50mm GRANULAR A LESTONE  
 300mm SUB BASE MATERIAL - 100mm GRANULAR A LESTONE  
 SEPARATION/FILTRATION GEOTEXTILE FABRIC  
 CLASS A GEOGRID  
 PREPARED SUBGRADE

**TYPICAL CROSS SECTION**  
 NTS

ITEM	RIM ELEV.	Sta	INVERT					CONNECTION	LEAD
			EAST	WEST	NORTH	SOUTH	V. RISER		
CB09	232.470	2+805	230.770	231.320	231.320	225.540±	2700 SRS	5.1m	
CB10	232.470	2+805	230.770	231.320	231.320	225.540±	2700 SRS	4.7m	

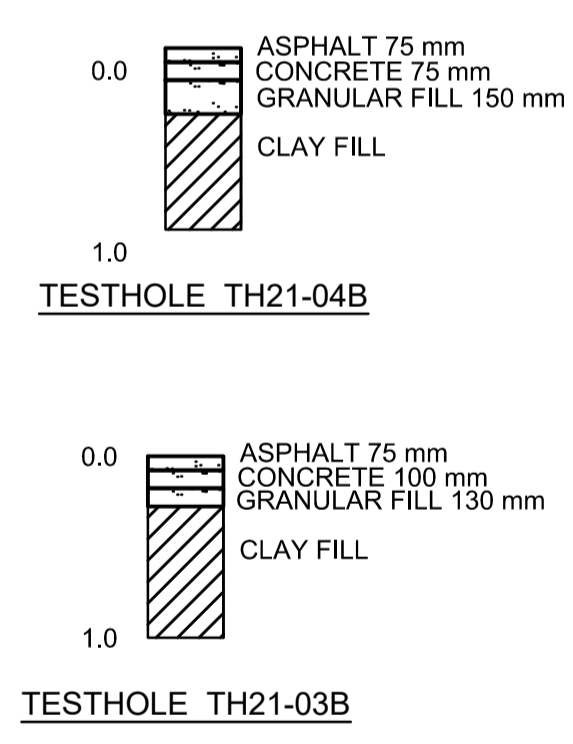


**REFERENCE NOTES:**

- A. PAVEMENT DIMENSIONS ARE TO BACK OF CURB
- B. BASELINE IS CENTRE LINE ROADWAY
- C. PROPERTY LINES OBTAINED FROM CITY OF WINNIPEG L.B.I.S., AND NO SCALE FACTOR WAS APPLIED
- D. REFER TO AECOM FIELD BOOK NO. 5111

**CONSTRUCTION NOTES:**

1. REMOVE EXISTING PAVEMENT AND CONSTRUCT NEW 250mm PLAIN DOWELLED CONCRETE PAVEMENT
2. REMOVE EXISTING PAVEMENT AND CONSTRUCT NEW 200mm REINFORCED CONCRETE PAVEMENT
3. REMOVE EXISTING ASPHALT PAVEMENT AND PLACE NEW ASPHALT PAVEMENT TYPE 1A
4. CONSTRUCT NEW MODIFIED BARRIER CURB (180mm HT. INTEGRAL)
5. CONSTRUCT NEW RAMP CURB (10-12mm HT. INTEGRAL)
6. RENEW EXISTING 100mm CONCRETE SIDEWALK
7. INSTALL NEW CURB AND GUTTER INLET c/w 1800mm CATCHBASIN (SD-024) AND CONNECT 250mm PVC LDS TO EXISTING 2700mm STORM RELIEF SEWER
8. INSTALL NEW 150mm SUBDRAIN 6.0m ON EACH SIDE OF CATCH BASIN
9. REMOVE EXISTING CATCH PIT AND ABANDON LEAD
10. REMOVE EXISTING CATCH BASIN AND ABANDON LEAD
11. ADJUST EXISTING MANHOLE TO GRADE
12. ADJUST EXISTING WATER VALVE TO GRADE
13. PLACE AND GRADE GRAVEL
14. INSULATE WATER SERVICES



**ENGINEERS  
 GEOSCIENTISTS  
 MANITOBA**  
 Certificate of Authorization  
 AECOM Canada Ltd.  
 No. 4671 Date: 02/26/24

**METRIC**  
 WHOLE NUMBERS INDICATE MILLIMETRES  
 DECIMALIZED NUMBERS INDICATE METRES

EXISTING	LEGEND - PLAN	PROPOSED	EXISTING	LEGEND - PLAN	PROPOSED	EXISTING	LEGEND - PROFILE	PROPOSED
150mm W.M.	WATERMAIN	150mm W.M.	HYDRO	M.T.S.	— x —	— x —	PROFILE	
150mm W.M.	HYDRANT	150mm W.M.	CONCRETE	CONCRETE	—	—	SOUTH GUTTER	
300mm L.D.S.	VALVE	300mm L.D.S.	ASPHALT	ASPHALT	—	—	NORTH GUTTER	
300mm W.W.S.	LAND DRAINAGE SEWER	300mm W.W.S.	PROPERTY LINE	PROPERTY LINE	—	—	S PROPERTY LINE	
250mm W.W.S.	WASTEWATER SEWER	250mm W.W.S.	SURVEY BAR	SURVEY BAR	—	—	N PROPERTY LINE	
300mm	MANHOLE	300mm	ELEVATION	ELEVATION	(235.750)	(235.750)	MULTI-USE PATHWAY	
300mm	CATCH BASIN	300mm	TREE	TREE	—	—		
300mm	CATCH PIT	300mm	SIDEWALK RAMP	SIDEWALK RAMP	—	—		
300mm	JUNCTIONS	300mm	CONCRETE SIDEWALK	CONCRETE SIDEWALK	—	—		
300mm	CULVERT	300mm	FENCE	FENCE	—	—		
300mm	GAS	300mm						

**LOCATION APPROVED UNDERGROUND STRUCTURES**  
 SUPV. U/G STRUCTURES COMMITTEE DATE  
 NOTE:  
 LOCATION OF UNDERGROUND STRUCTURES AS SHOWN ARE BASED ON THE BEST INFORMATION AVAILABLE. BUT NO GUARANTEE IS GIVEN THAT ALL EXISTING UTILITIES ARE SHOWN OR THAT THE GIVEN LOCATIONS ARE EXACT. CONFIRMATION OF EXISTENCE AND EXACT LOCATION OF ALL SERVICES MUST BE OBTAINED FROM THE INDIVIDUAL UTILITIES BEFORE PROCEEDING WITH CONSTRUCTION.

B.M. #27 - N.E. Cor. Sherwin Rd. & Saskatchewan Ave., ELEV. 231.15m S. Conc. foundation No. 975 Sherwin Rd., 2 m E. & 0.2 m below scored Conc. wall of S.W. Cor. of Bldg. EL: 233.965

DESIGNED BY	BC	CHECKED BY	BC
DRAWN BY	SS	APPROVED BY	RC
HOR. SCALE:	1:250	RELEASED FOR CONSTRUCTION BY:	
VERTICAL:	1:10		
ISSUED FOR TENDER	02/26/24	RC	
NO. REVISIONS		DATE	02/13/2023

ENGINEER'S SEAL  
 CONSULTANT DRAWING NO. CT-09

**THE CITY OF WINNIPEG**  
 PUBLIC WORKS DEPARTMENT  
 ENGINEERING DIVISION

2024 INDUSTRIAL STREET  
 RENEWAL PROGRAM

MIDLAND STREET AND SASKATCHEWAN AVENUE - EMPRESS STREET TO NOTRE DAME AVENUE  
 CONCRETE PAVEMENT RECONSTRUCTION  
 STATION 2+760 TO STATION 2+880

CITY DRAWING NUMBER SHEET 09 OF 11