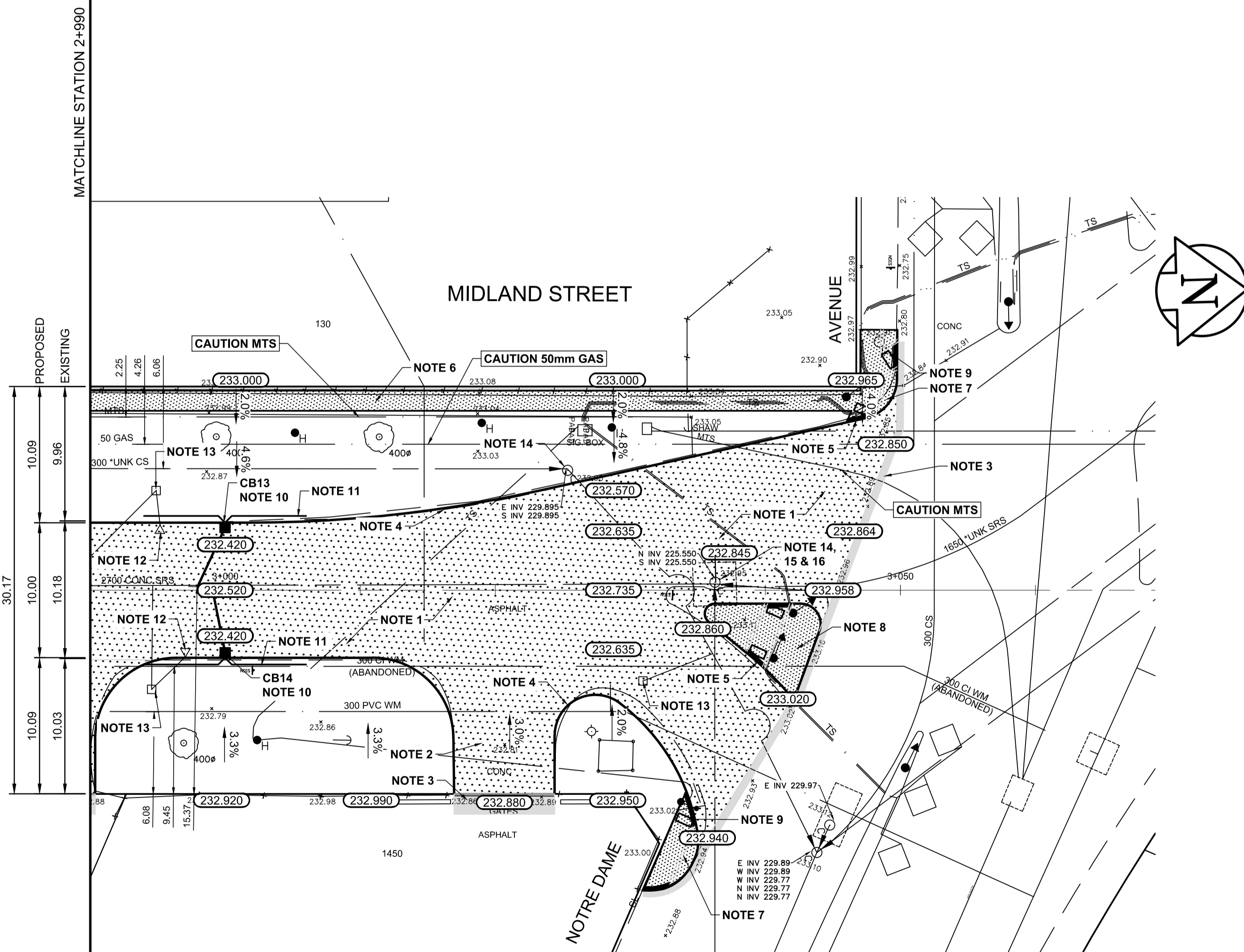


TYPICAL CROSS SECTION
NTS

| CATCH BASIN TABLE | | | | | | | | | |
|-------------------|-----------|-------|---------|---------|---------|---------|----------|------------|------|
| ITEM | RIM ELEV. | Sta | INVERT | | | | | CONNECTION | LEAD |
| | | | EAST | WEST | NORTH | SOUTH | V.RISER | | |
| CB11 | 232.420 | 3+000 | 230.720 | 230.720 | 231.270 | 231.270 | 225.545± | 2700 SRS | 4.8m |
| CB12 | 232.420 | 3+000 | 230.720 | 230.720 | 231.270 | 231.270 | 225.545± | 2700 SRS | 5.1m |



REFERENCE NOTES:

- A. PAVEMENT DIMENSIONS ARE TO BACK OF CURB
- B. BASELINE IS CENTRE LINE ROADWAY
- C. PROPERTY LINES OBTAINED FROM CITY OF WINNIPEG L.B.I.S., AND NO SCALE FACTOR WAS APPLIED
- D. REFER TO AECOM FIELD BOOK NO. 5111

CONSTRUCTION NOTES:

1. REMOVE EXISTING PAVEMENT AND CONSTRUCT NEW 250mm PLAIN DOWELLED CONCRETE PAVEMENT
2. REMOVE EXISTING PAVEMENT AND CONSTRUCT NEW 200mm REINFORCED CONCRETE PAVEMENT
3. REMOVE EXISTING ASPHALT PAVEMENT AND PLACE NEW ASPHALT PAVEMENT TYPE 1A
4. CONSTRUCT NEW MODIFIED BARRIER CURB (180mm HT. INTEGRAL)
5. CONSTRUCT NEW RAMP CURB (10-12mm HT. INTEGRAL)
6. RENEW EXISTING NEW 100mm CONCRETE SIDEWALK
7. REMOVE EXISTING SIDEWALK AND CONSTRUCT NEW 100mm CONCRETE SIDEWALK c/w BLOCKOUT AND PAVING STONES
8. REMOVE AND CONSTRUCT NEW MONOLITHIC MEDIAN SLAB
9. INSTALL NEW DETECTABLE WARNING SURFACE TILE
10. INSTALL NEW CURB AND GUTTER INLET c/w 1800mm CATCHBASIN (SD-024) AND CONNECT 250mm PVC LDS TO EXISTING 2700mm STORM RELIEF SEWER
11. INSTALL NEW 150mm SUBDRAIN 6.0m ON EACH SIDE OF CATCH BASIN
12. REMOVE EXISTING CATCH PIT AND ABANDON LEAD
13. REMOVE EXISTING CATCH BASIN AND ABANDON LEAD
14. ADJUST EXISTING MANHOLE TO GRADE
15. REMOVE EXISTING FRAME AND COVER AND PLACE NEW FRAME AND COVER (AP-006/AP-007)
16. INSTALL NEW CAST IRON RISER RING

**ENGINEERS
GEOLOGISTS
MANITOBA**
Certificate of Authorization
AECOM Canada Ltd.
No. 4671 Date: 02/26/2024

METRIC
WHOLE NUMBERS INDICATE MILLIMETRES
DECIMALIZED NUMBERS INDICATE METRES

| EXISTING | LEGEND - PLAN | PROPOSED | EXISTING | LEGEND - PLAN | PROPOSED | EXISTING | LEGEND - PROFILE | PROPOSED |
|--------------|---------------------|--------------|-------------------|-------------------|-----------|----------|-------------------|----------|
| 150 mm W.M. | WATERMAIN | 150 mm W.M. | HYDRO | M.T.S. | PROFILE | — x — | SOUTH GUTTER | — |
| 300mm L.D.S. | LAND DRAINAGE SEWER | 300mm L.D.S. | CONCRETE | CONCRETE | — | — | NORTH GUTTER | — |
| 250mm W.W.S. | WASTEWATER SEWER | 250mm W.W.S. | ASPHALT | ASPHALT | — | — | S PROPERTY LINE | — |
| ○ | MANHOLE | ● | PROPERTY LINE | PROPERTY LINE | — | — | N PROPERTY LINE | — |
| □ | CATCH BASIN | ■ | SURVEY BAR | SURVEY BAR | — | — | MULTI-USE PATHWAY | — |
| ▽ | CATCH PIT | ▽ | ELEVATION | ELEVATION | (235.750) | — | | |
| — | JUNCTIONS | — | TREE | TREE | — | — | | |
| — | CULVERT | — | SIDEWALK RAMP | SIDEWALK RAMP | — | — | | |
| — | GAS | — | CONCRETE SIDEWALK | CONCRETE SIDEWALK | — | — | | |
| | | | FENCE | FENCE | — | — | | |

LOCATION APPROVED UNDERGROUND STRUCTURES
SUPV. U/G STRUCTURES COMMITTEE DATE
NOTE:
LOCATION OF UNDERGROUND STRUCTURES AS SHOWN ARE BASED ON THE BEST INFORMATION AVAILABLE. BUT NO GUARANTEE IS GIVEN THAT ALL EXISTING UTILITIES ARE SHOWN OR THAT THE GIVEN LOCATIONS ARE EXACT. CONFIRMATION OF EXISTENCE AND EXACT LOCATION OF ALL SERVICES MUST BE OBTAINED FROM THE INDIVIDUAL UTILITIES BEFORE PROCEEDING WITH CONSTRUCTION.

| | |
|---|--|
| B.M. #27 - N.E. Cor. Sherwin Rd. & Saskatchewan Ave., ELEV. 233.965 | Tblt. In S. Conc. foundation No. 975 Sherwin Rd., 2 m E. & 0.2 m below scored Conc. wall of S.W. Cor. of Bldg. EL: 233.965 |
| 0 | ISSUED FOR TENDER 02/26/24 RC |
| NO. | REVISIONS DATE BY |

AECOM

| | | | |
|-------------|-------|-------------------------------|------------|
| DESIGNED BY | BC | CHECKED BY | BC |
| DRAWN BY | SS | APPROVED BY | RC |
| HOR. SCALE: | 1:250 | RELEASED FOR CONSTRUCTION BY: | |
| VERTICAL: | 1:10 | DATE | 02/13/2023 |

ENGINEER'S SEAL
CONSULTANT DRAWING NO. CT-11

THE CITY OF WINNIPEG
PUBLIC WORKS DEPARTMENT
ENGINEERING DIVISION

2024 INDUSTRIAL STREET
RENEWAL PROGRAM

MIDLAND STREET AND SASKATCHEWAN AVENUE -
EMPRESS STREET TO NOTRE DAME AVENUE
CONCRETE PAVEMENT RECONSTRUCTION
STATION 2+990 TO NOTRE DAME AVENUE

CITY DRAWING NUMBER SHEET 11 OF 11