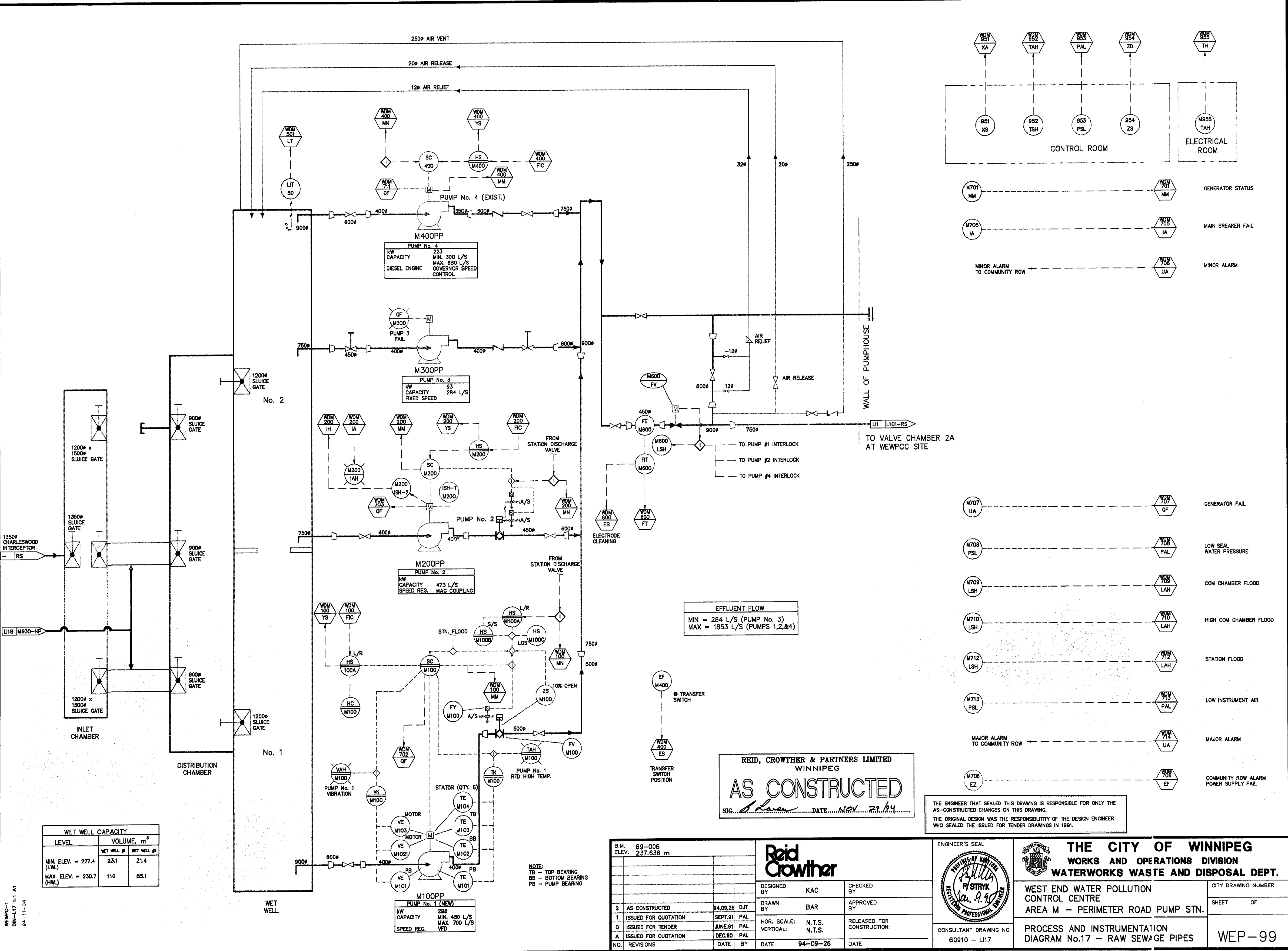


Record Drawings – 1994 PID Original
Construction



WET WELL CAPACITY		
LEVEL	VOLUME, m ³	
	WET WELL #1	WET WELL #2
MIN. ELEV. = 227.4 (L.W.)	23.1	21.4
MAX. ELEV. = 230.7 (H.W.)	110	85.1

EFFLUENT FLOW
 MIN = 284 L/S (PUMP No. 3)
 MAX = 1853 L/S (PUMPS 1,2,&4)

REID, CROWTHER & PARTNERS LIMITED
 WINNIPEG
AS CONSTRUCTED
 SIG. *[Signature]* DATE: *Nov. 29, 89*

S.M.	69-006
ELEV.	237.636 m
NO.	REVISIONS
DATE	BY

DESIGNED BY	KAC	CHECKED BY	
DRAWN BY	BAR	APPROVED BY	
1	AS CONSTRUCTED	84,09,28	DJT
2	ISSUED FOR QUOTATION	SEPT.01	PAL
0	ISSUED FOR TENDER	JUNE.91	PAL
A	ISSUED FOR QUOTATION	DEC.90	PAL
NO.	REVISIONS	DATE	BY
		94-09-28	

ENGINEER'S SEAL

 CONSULTANT DRAWING NO.
 60910 - LI17

THE CITY OF WINNIPEG
 WORKS AND OPERATIONS DIVISION
 WATERWORKS WASTE AND DISPOSAL DEPT.
 WEST END WATER POLLUTION CONTROL CENTRE
 AREA M - PERIMETER ROAD PUMP STN.
 PROCESS AND INSTRUMENTATION DIAGRAM No.17 - RAW SEWAGE PIPES
 CITY DRAWING NUMBER
 SHEET OF
WEP-99

File # WS10149