

EQUIPMENT SCHEDULE:

EQUIPMENT TAG DESCRIPTION	
EQ-03a	DISHWASHER (DFP-A)
EQ-03b	COMMERCIAL DISHWASHER (DFP-A)
EQ-04	REFRIGERATOR (DFP-A)
EQ-05B	FLAMMABLE STORAGE CABINET (NIC)
EQ-05C	WALL MOUNTED FLAMMABLE STORAGE CABINET (NIC)
EQ-11	RANGE (DFP-A)
EQ-12	MICROWAVE (DFP-A)
EQ-15	UPRIGHT FREEZER (DFP-A)
EQ-21	STACKED WASHER & DRYER (DFP-A)
EQ-22A	EXISTING VENDING MACHINE
EQ-22B	EXISTING VENDING MACHINE
EQ-29	ELECTRIC COOKTOP (DFP-A)
EQ-30	WALL OVEN (DFP-B)

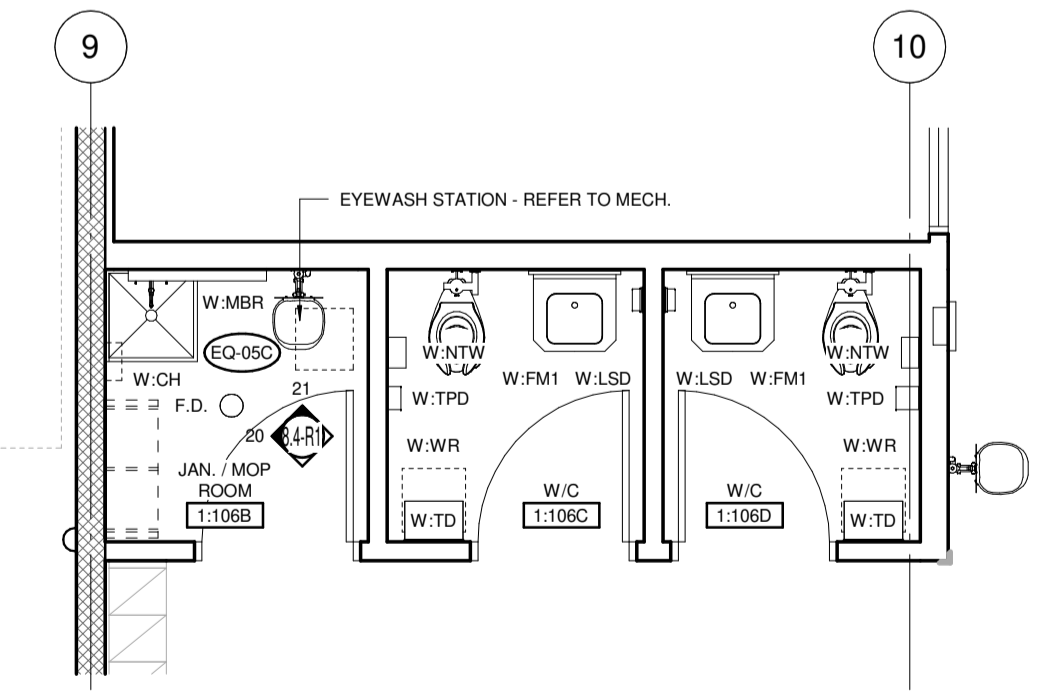
- GENERAL NOTES:**
- FURNITURE AND EQUIPMENT THAT ARE NOT IN CONTRACT (NIC) ARE INDICATED WITH A DASHED LINE, AND ARE SHOWN FOR INFORMATION PURPOSES ONLY EXCEPT WHERE OTHERWISE INDICATED.
 - PROVIDE WOOD BLOCKING CONCEALED IN WALL FOR ALL FURNITURE, EQUIPMENT AND ACCESSORIES MOUNTED AND/OR SECURED TO WALL. TYPICAL OF ALL IN CONTRACT, NOT IN CONTRACT (NIC) AND DIVISION FURNISHED PRODUCTS (DFP). CONFIRM EXACT LOCATION OF LOCKING WITH CONTRACT ADMINISTRATOR PRIOR TO INSTALLATION.
 - SWITCHES AND OUTLETS ARE SHOWN FOR LOCATIONAL PURPOSES ONLY (NOT ALL DEVICES DISPLAYED). REFER TO ELECTRICAL FOR TYPE AND QUANTITY - TYPICAL.

ABBREVIATIONS & ACCESSORIES:

ADO	AUTOMATIC DOOR OPERATOR	NIC	NOT IN CONTRACT
CA	CARD ACCESS	DFP-A	DIVISION FURNISHED PRODUCT (CONTRACTOR INSTALLED)
CG	CORNER GUARD	DFP-B	DIVISION FURNISHED PRODUCT (VENDOR INSTALLED)
ELP	ELECTRICAL PANEL		
FB	ELECTRICAL FLOOR BOX	SIM.	SIMILAR
F.D.	FLOOR DRAIN	SL.	SLOPE
F.F.D.	FUNNEL FLOOR DRAIN		
FE	FIRE EXTINGUISHER (SURFACE MOUNTED)	W-CH	CHEMICAL DISPENSER (NIC)
FEC-A	FIRE EXTINGUISHER CABINET (SEMI-RECESSED)	W-FM1	FRAMED MIRROR (610 x 915 mm)
FF	FORCE FLOW UNIT	W-HSD	HAND SANITIZER DISPENSER (DFP-A)
H.B.	HOSE BIB	W-KSD	KITCHEN SANITATION DISPENSER (NIC)
ID	INTERACTIVE DISPLAY (NIC)	W-LSD	LIQUID SOAP DISPENSER (DFP-A)
MB1	MARKERBOARD (2440 x 1220 mm)	W-MBR	MOP/BROOM RACK
MB2	MARKERBOARD (1220 x 1220 mm)	W-NTW	NAPKIN/TAMPON WASTE (DFP-A)
M.O.	MASONRY OPENING	W-SCH	SAFETY COAT HOOK
		W-TD	PAPER TOWEL DISPENSER (DFP-A)
		W-TPD	TOILET PAPER DISPENSER (DFP-A)
		W-WR	WASTE RECEPTACLE (NIC)

1 ENLARGED PLAN - FOOD & NUTRITION 1:107
SCALE: 1:50

NOTE:
ALL MILLWORK COUNTERTOPS IN FOOD & NUTRITION 1:107 TO BE 13 mm SOLID SURFACING MATERIAL (SSM)
C/W 38 mm BUILT-UP EDGE - REFER TO PROJECT MANUAL DETAIL SHEET AP8.04 FOR TYPICAL DETAIL.



2 ENLARGED PLAN - VOCATIONAL WASHROOMS
SCALE: 1:50

LM esp
LM Architectural Group | Environmental Space Planning
500-136 Market Avenue Winnipeg, Manitoba Canada R3B 0P4
t: 204.942.0681 lm-esp.ca

No.	REVISION/DESCRIPTION	BY	DATE
1	ADDENDUM_2 - DRAWING_A7.1-R1	JT	04.25.24
0	ISSUED FOR CONSTRUCTION	JT	04.01.24

SEAL

TM DRAWN	HW CHECKED	TM DESIGNED	JT APPROVED
	USER APPROVAL		
DATE	2024.04.25		

THE CITY OF WINNIPEG
ASSETS & PROJECT MANAGEMENT
DEPARTMENT
MUNICIPAL ACCOMMODATIONS DIVISION
3-65 GARRY STREET, R3C 4K4

PROJECT
**PEMBINA TRAILS COLLEGIATE
VOCATIONAL WING**
TENDER NO. 954-2023B
50 FRONTIER TRAIL, WINNIPEG, MANITOBA, R3Y 2H1

SHEET TITLE
ENLARGED PLANS

SCALE	PROJECT No:	SHEET No:
As indicated	2020-127	A7.1-R1