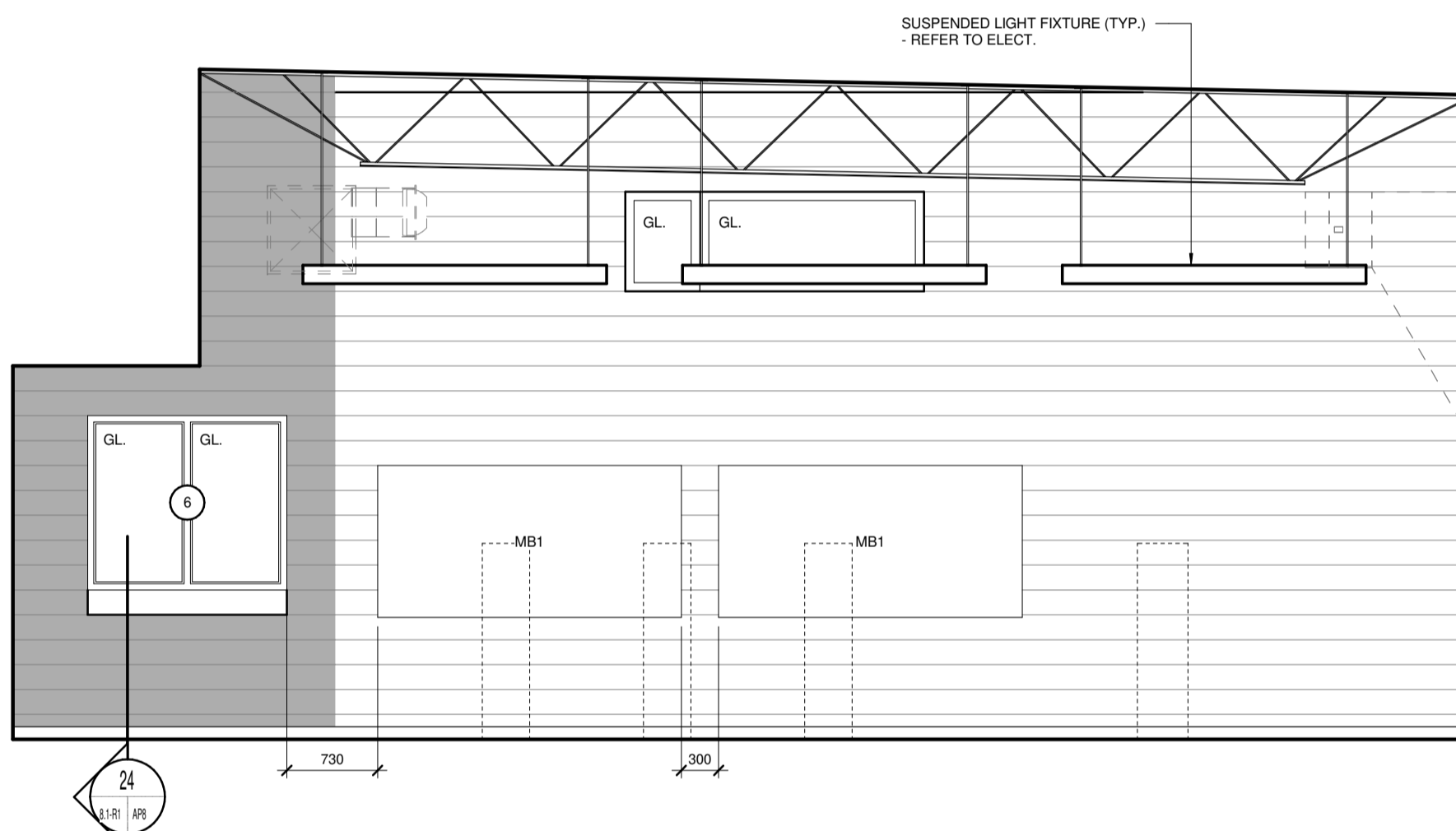
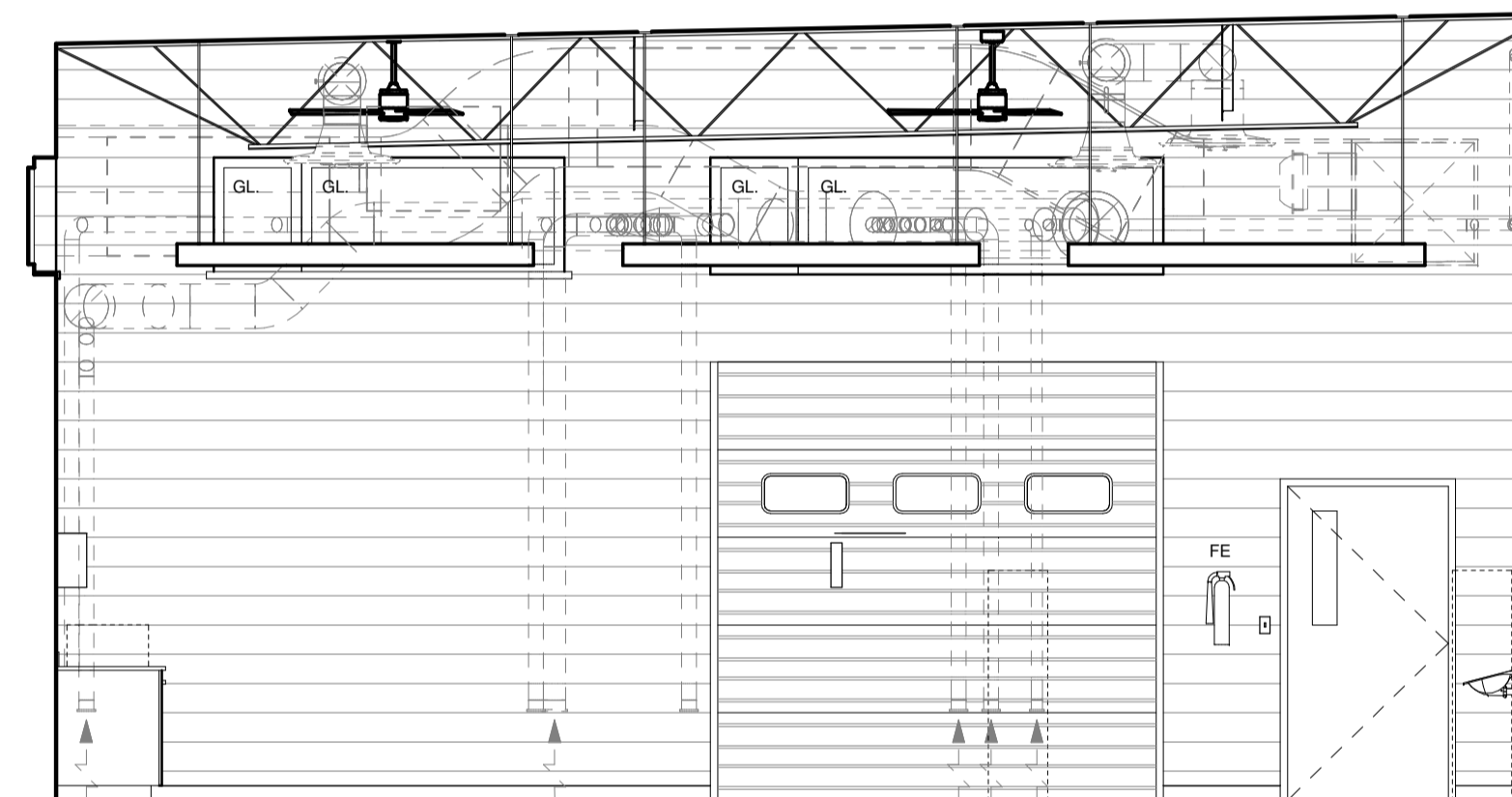


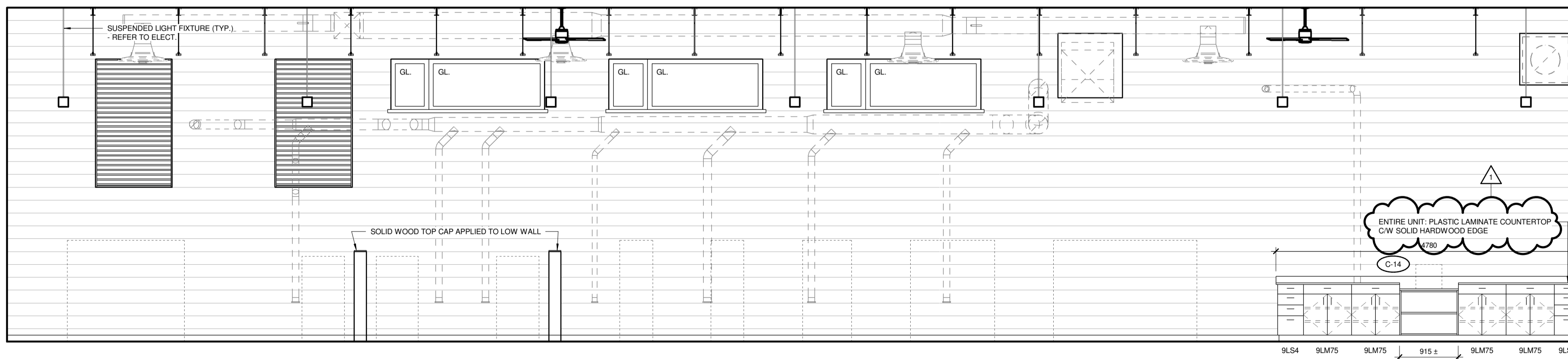
6 CONSTRUCTION & WOOD TECHNOLOGY 1:100 - EAST ELEVATION
SCALE 1:50



7 CONSTRUCTION & WOOD TECHNOLOGY 1:100 - SOUTH ELEVATION
SCALE 1:50



8 CONSTRUCTION & WOOD TECHNOLOGY 1:100 - NORTH ELEVATION
SCALE 1:50



9 CONSTRUCTION & WOOD TECHNOLOGY 1:100 - WEST ELEVATION
SCALE 1:50

EQUIPMENT SCHEDULE:

EQUIPMENT TAG DESCRIPTION	
EQ-03a	DISHWASHER (DFF-A)
EQ-03b	COMMERCIAL DISHWASHER (DFF-A)
EQ-04	REFRIGERATOR (DFF-A)
EQ-05B	FLAMMABLE STORAGE CABINET (NIC)
EQ-05C	WALL MOUNTED FLAMMABLE STORAGE CABINET (NIC)
EQ-11	RANGE (DFF-A)
EQ-12	MICROWAVE (DFF-A)
EQ-15	UPRIGHT FREEZER (DFF-A)
EQ-21	STACKED WASHER & DRYER (DFF-A)
EQ-22A	EXISTING VENDING MACHINE
EQ-22B	EXISTING VENDING MACHINE
EQ-29	ELECTRIC COOKTOP (DFF-A)
EQ-30	WALL OVEN (DFF-B)

GENERAL NOTES:

- FURNITURE AND EQUIPMENT THAT ARE NOT IN CONTRACT (NIC) ARE INDICATED WITH A DASHED LINE, AND ARE SHOWN FOR INFORMATION PURPOSES ONLY EXCEPT WHERE OTHERWISE INDICATED.
- PROVIDE WOOD BLOCKING CONCEALED IN WALL FOR ALL FURNITURE, EQUIPMENT AND ACCESSORIES MOUNTED AND/OR SECURED TO WALL. TYPICAL OF ALL IN CONTRACT, NOT IN CONTRACT (NIC) AND DIVISION FURNISHED PRODUCTS (DFF). CONFIRM EXACT LOCATION OF BLOCKING WITH CONTRACT ADMINISTRATOR PRIOR TO INSTALLATION.
- SWITCHES AND OUTLETS ARE SHOWN FOR LOCATIONAL PURPOSES ONLY (NOT ALL DEVICES DISPLAYED). REFER TO ELECTRICAL FOR TYPE AND QUANTITY - TYPICAL.

ABBREVIATIONS & ACCESSORIES:

ADO	AUTOMATIC DOOR OPERATOR	NIC	NOT IN CONTRACT
CA	CARD ACCESS	DFF-A	DIVISION FURNISHED PRODUCT (CONTRACTOR INSTALLED)
CG	CORNER GUARD	DFF-B	DIVISION FURNISHED PRODUCT (VENDOR INSTALLED)
ELP	ELECTRICAL PANEL		
FB	ELECTRICAL FLOOR BOX	SIM.	SIMILAR
F.D.	FLOOR DRAIN	SL.	SLOPE
F.F.D.	FUNNEL FLOOR DRAIN		
FE	FIRE EXTINGUISHER (SURFACE MOUNTED)	W-CH	CHEMICAL DISPENSER (NIC)
FEC-A	FIRE EXTINGUISHER CABINET (SEMI-RECESSED)	W-FM	FRAMED MIRROR (610 x 915 mm)
FF	FORCE FLOW UNIT	W-HSD	HAND SANITIZER DISPENSER (DFF-A)
H.B.	HOSE BIB	W-KSD	KITCHEN SANITATION DISPENSER (NIC)
ID	INTERACTIVE DISPLAY (NIC)	W-LSD	LIQUID SOAP DISPENSER (DFF-A)
MB1	MARKERBOARD (2440 x 1220 mm)	W-MBR	MOP/BROOM RACK
MB2	MARKERBOARD (1220 x 1220 mm)	W-WTW	WAP/PRINT/TAMPON WASTE (DFF-A)
M.O.	MASONRY OPENING	W-SCH	SAFETY COAT HOOK
		W-TD	PAPER TOWEL DISPENSER (DFF-A)
		W-TPD	TOILET PAPER DISPENSER (DFF-A)
		W-WR	WASTE RECEPTACLE (NIC)

LM esp
LM Architectural Group | Environmental Space Planning
500-136 Market Avenue Winnipeg, Manitoba Canada R3B 0P4
t: 204.942.0681 lm-esp.ca

1	ADDENDUM_2-DRAWING_AB.2-R1	JT	04.25.24
0	ISSUED FOR CONSTRUCTION	JT	04.01.24
No.	REVISION/DESCRIPTION	BY	DATE

TM	HW	TM	JT
DRAWN	CHECKED	DESIGNED	APPROVED
DATE	USER APPROVAL		
2024.04.25			

THE CITY OF WINNIPEG
ASSETS & PROJECT MANAGEMENT
DEPARTMENT
MUNICIPAL ACCOMMODATIONS DIVISION
3-65 GARRY STREET, R3C 4K4

PROJECT
**PEMBINA TRAILS COLLEGIATE
VOCATIONAL WING**
TENDER NO. 954-2023B
50 FRONTIER TRAIL, WINNIPEG, MANITOBA, R3Y 2H1

SHEET TITLE
**INTERIOR ELEVATIONS
CONSTRUCTION AND
WOOD TECHNOLOGY**

SCALE	PROJECT No:	SHEET No:
As indicated	2020-127	A8.2-R1