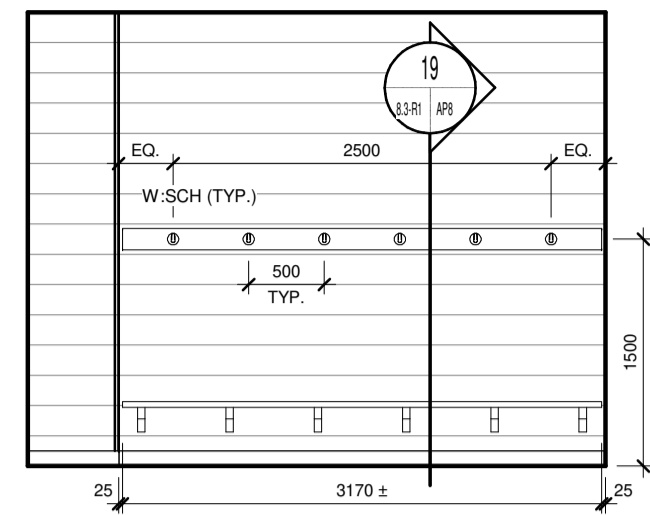
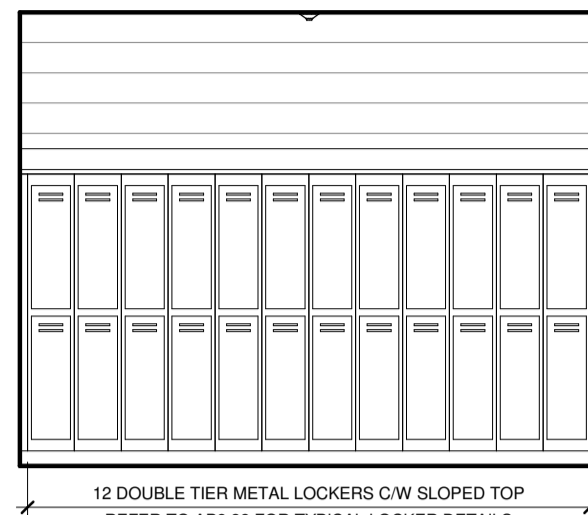


10 DESIGN LAB 1:101 - NORTH ELEVATION  
SCALE 1:50



11 LOCKER ROOM 1:103A - NORTH ELEVATION  
SCALE 1:50



12 LOCKER ROOM 1:103A - SOUTH ELEVATION  
SCALE 1:50

**EQUIPMENT SCHEDULE:**

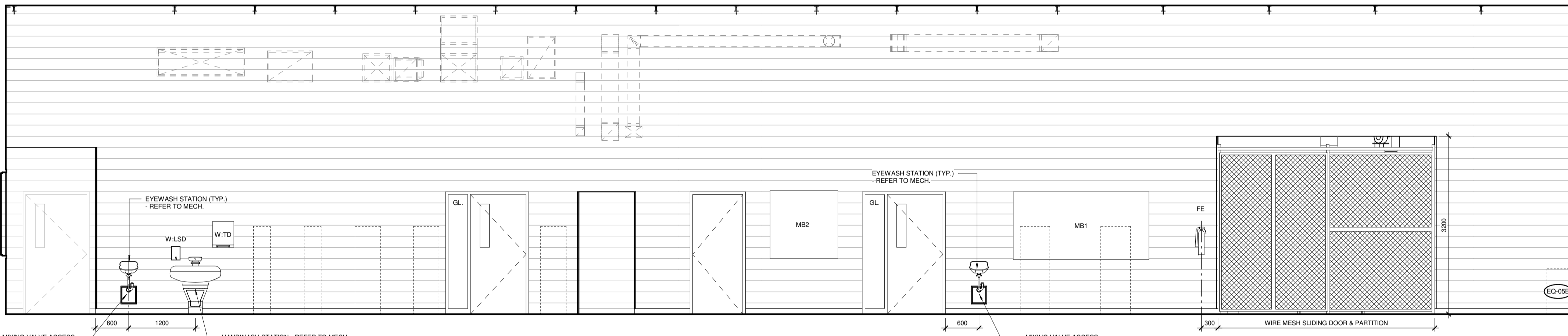
EQUIPMENT TAG DESCRIPTION	
EQ-03a	DISHWASHER (DFF-A)
EQ-03b	COMMERCIAL DISHWASHER (DFF-A)
EQ-04	REFRIGERATOR (DFF-A)
EQ-05B	FLAMMABLE STORAGE CABINET (NIC)
EQ-05C	WALL MOUNTED FLAMMABLE STORAGE CABINET (NIC)
EQ-11	RANGE (DFF-A)
EQ-12	MICROWAVE (DFF-A)
EQ-15	UPRIGHT FREEZER (DFF-A)
EQ-21	STACKED WASHER & DRYER (DFF-A)
EQ-22A	EXISTING VENDING MACHINE
EQ-22B	EXISTING VENDING MACHINE
EQ-29	ELECTRIC COOKTOP (DFF-A)
EQ-30	WALL OVEN (DFF-B)

**GENERAL NOTES:**

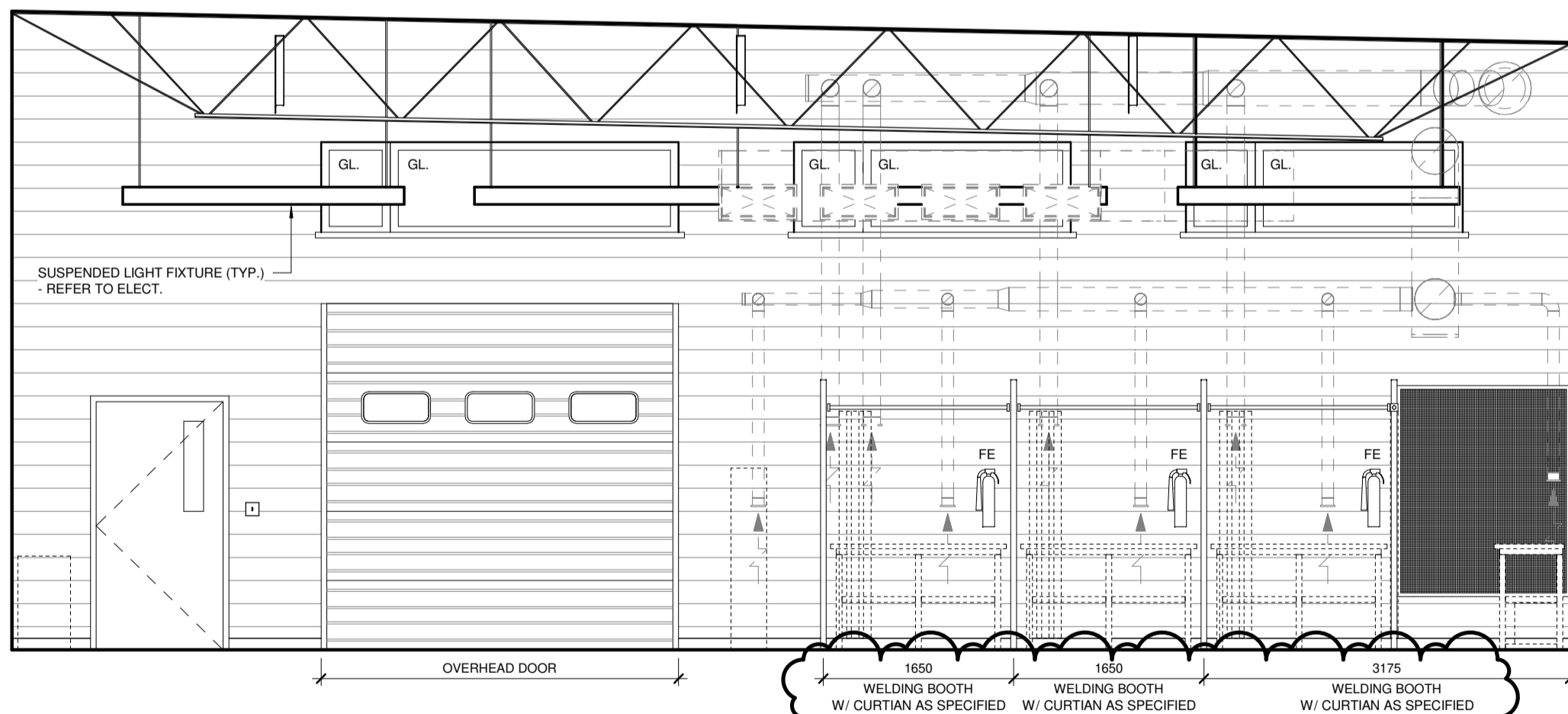
- FURNITURE AND EQUIPMENT THAT ARE NOT IN CONTRACT (NIC) ARE INDICATED WITH A DASHED LINE, AND ARE SHOWN FOR INFORMATION PURPOSES ONLY EXCEPT WHERE OTHERWISE INDICATED.
- PROVIDE WOOD BLOCKING CONCEALED IN WALL FOR ALL FURNITURE, EQUIPMENT AND ACCESSORIES MOUNTED AND/OR SECURED TO WALL. TYPICAL OF ALL IN CONTRACT, NOT IN CONTRACT (NIC) AND DIVISION FURNISHED PRODUCTS (DFF). CONFIRM EXACT LOCATION OF LOCKING WITH CONTRACT ADMINISTRATOR PRIOR TO INSTALLATION.
- SWITCHES AND OUTLETS ARE SHOWN FOR LOCATIONAL PURPOSES ONLY (NIC). ALL DEVICES DISPLAYED, REFER TO ELECTRICAL FOR TYPE AND QUANTITY - TYPICAL.

**ABBREVIATIONS & ACCESSORIES:**

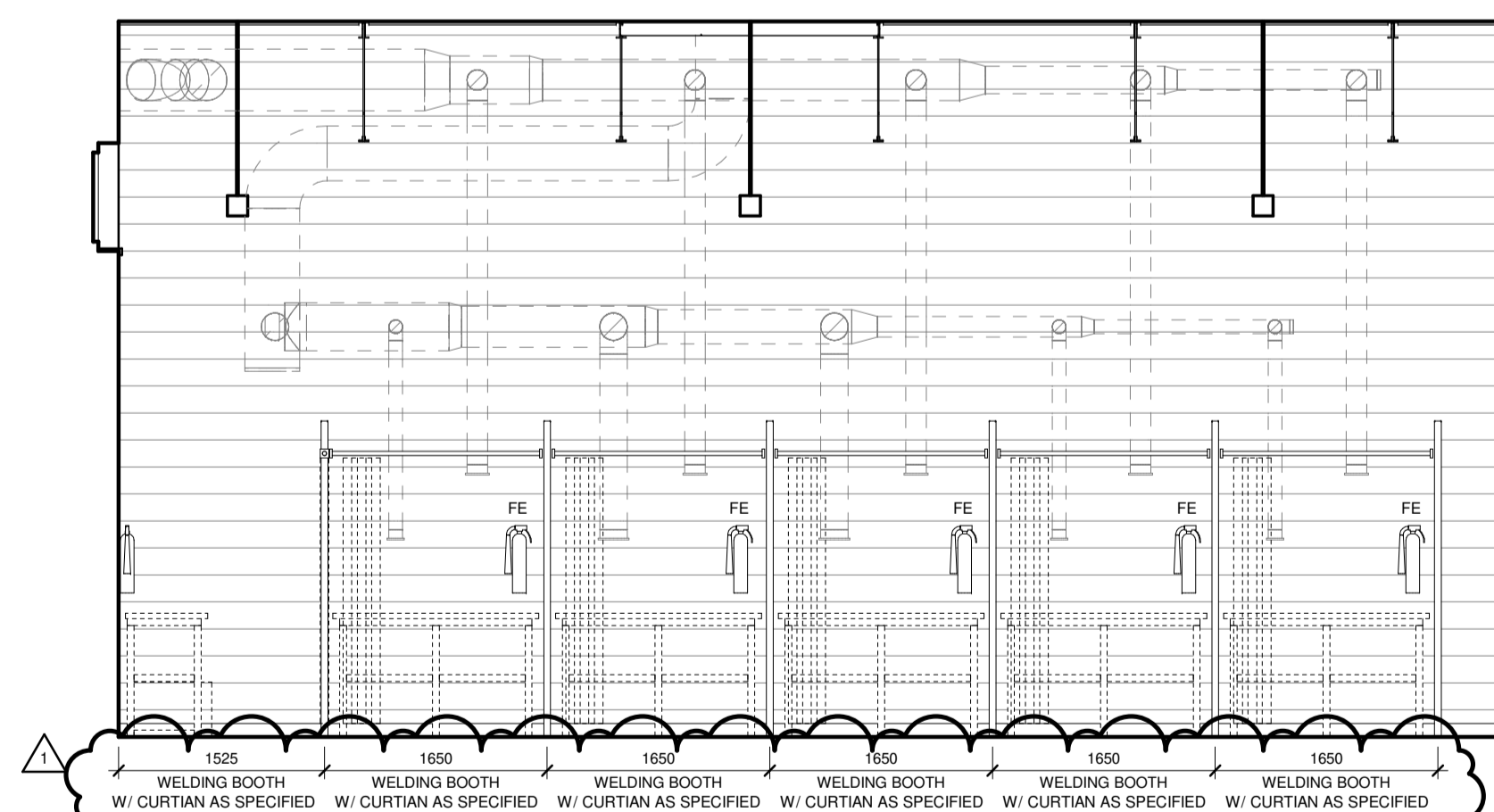
ADO	AUTOMATIC DOOR OPERATOR	NIC	NOT IN CONTRACT
CA	CARD ACCESS	DFF-A	DIVISION FURNISHED PRODUCT (CONTRACTOR INSTALLED)
CG	CORNER GUARD	DFF-B	DIVISION FURNISHED PRODUCT (VENDOR INSTALLED)
ELP	ELECTRICAL PANEL		
FB	ELECTRICAL FLOOR BOX	SIM.	SIMILAR
F.D.	FLOOR DRAIN	SL.	SLOPE
F.F.D.	FUNNEL FLOOR DRAIN		
FE	FIRE EXTINGUISHER (SURFACE MOUNTED)	W-CH	CHEMICAL DISPENSER (NIC)
FEC-A	FIRE EXTINGUISHER CABINET (SEMI-RECESSED)	W-FM	FRAMED MIRROR (610 x 915 mm)
FF	FORCE FLOW UNIT	W-HSD	HAND SANITIZER DISPENSER (DFF-A)
H.B.	HOSE BIB	W-KSD	KITCHEN SANITATION DISPENSER (NIC)
ID	INTERACTIVE DISPLAY (NIC)	W-LSL	LIQUID SOAP DISPENSER (DFF-A)
MB1	MARKERBOARD (2440 x 1220 mm)	W-MBR	MOP/BROOM RACK
MB2	MARKERBOARD (1220 x 1220 mm)	W-WTW	WAP/TAMPON WASTE (DFF-A)
M.O.	MASONRY OPENING	W-SCH	SAFETY COAT HOOK
		W-TD	PAPER TOWEL DISPENSER (DFF-A)
		W-TRD	TOILET PAPER DISPENSER (DFF-A)
		W-WR	WASTE RECEPTACLE (NIC)



13 MACHINING & WELDING TECHNOLOGY 1:103 - WEST ELEVATION  
SCALE 1:50



14 MACHINING & WELDING TECHNOLOGY 1:103 - NORTH ELEVATION  
SCALE 1:50



15 MACHINING & WELDING TECHNOLOGY 1:103 - PARTIAL EAST ELEVATION  
SCALE 1:50

**LM esp**  
LM Architectural Group | Environmental Space Planning  
500-136 Market Avenue Winnipeg, Manitoba Canada R3B 0P4  
t: 204.942.0681 lm-esp.ca

No.	REVISION/DESCRIPTION	BY	DATE
1	ADDENDUM_2-DRAWING_AB.3-R1	JT	04.25.24
0	ISSUED FOR CONSTRUCTION	JT	04.01.24

TM DRAWN	HW CHECKED	TM DESIGNED	JT APPROVED
DATE: 2024.04.25			
USER APPROVAL			

THE CITY OF WINNIPEG  
ASSETS & PROJECT MANAGEMENT  
DEPARTMENT  
MUNICIPAL ACCOMMODATIONS DIVISION  
3-65 GARRY STREET, R3C 4K4

PROJECT  
**PEMBINA TRAILS COLLEGIATE VOCATIONAL WING**  
TENDER NO. 954-2023B  
50 FRONTIER TRAIL, WINNIPEG, MANITOBA, R3Y 2H1

SHEET TITLE  
**INTERIOR ELEVATIONS - DESIGN LAB, LOCKER ROOM, AND MACHINE & WELDING TECHNOLOGY**

SCALE	PROJECT No:	SHEET No:
As indicated	2020-127	A8.3-R1