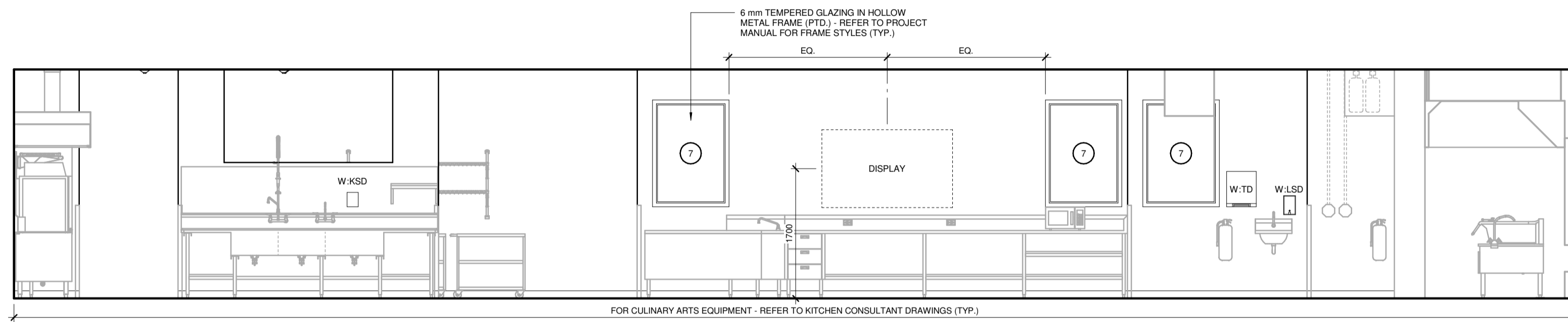
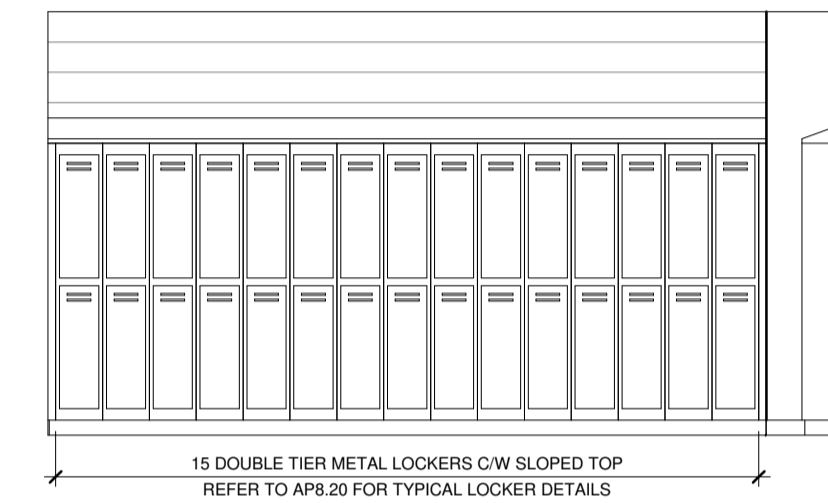


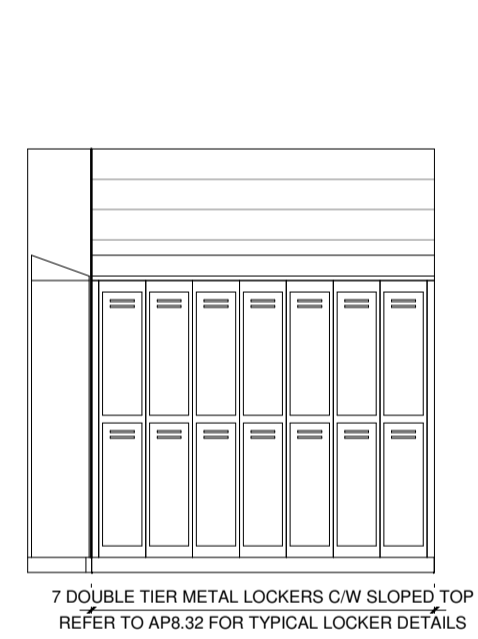
16 CULINARY ARTS 1:106 - WEST ELEVATION
SCALE 1:50



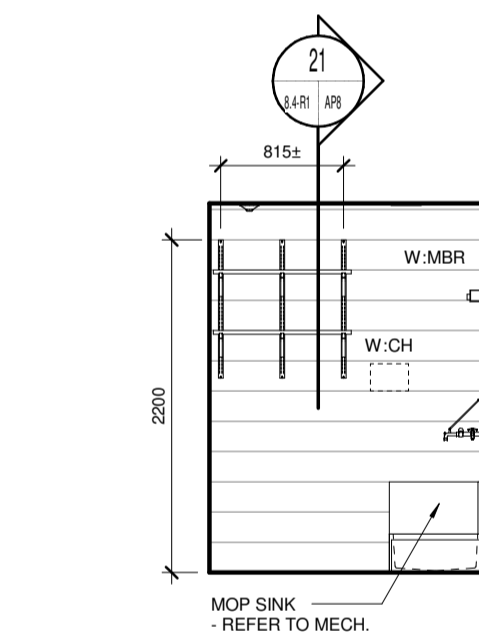
17 CULINARY ARTS 1:106 - NORTH ELEVATION
SCALE 1:50



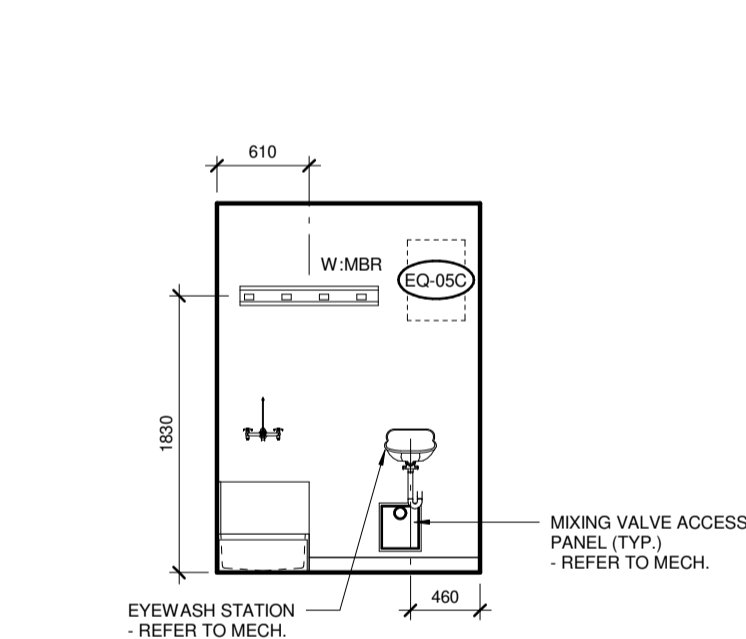
18 CHANGEROOM 1:106A - SOUTH ELEVATION
SCALE 1:50



19 CHANGEROOM 1:106A WEST ELEVATION
SCALE 1:50



20 JAN. / MOP ROOM 1:106B WEST ELEVATION
SCALE 1:50



21 JAN. / MOP ROOM 1:106B NORTH ELEVATION
SCALE 1:50

EQUIPMENT SCHEDULE:

EQUIPMENT TAG DESCRIPTION	
EQ-03a	DISHWASHER (DFF-A)
EQ-03b	COMMERCIAL DISHWASHER (DFF-A)
EQ-04	REFRIGERATOR (DFF-A)
EQ-05B	FLAMMABLE STORAGE CABINET (NIC)
EQ-05C	WALL MOUNTED FLAMMABLE STORAGE CABINET (NIC)
EQ-11	RANGE (DFF-A)
EQ-12	MICROWAVE (DFF-A)
EQ-15	UPRIGHT FREEZER (DFF-A)
EQ-21	STACKED WASHER & DRYER (DFF-A)
EQ-22A	EXISTING VENDING MACHINE
EQ-22B	EXISTING VENDING MACHINE
EQ-29	ELECTRIC COOKTOP (DFF-A)
EQ-30	WALL OVEN (DFF-B)

GENERAL NOTES:

- FURNITURE AND EQUIPMENT THAT ARE NOT IN CONTRACT (NIC) ARE INDICATED WITH A DASHED LINE, AND ARE SHOWN FOR INFORMATION PURPOSES ONLY EXCEPT WHERE OTHERWISE INDICATED.
- PROVIDE WOOD BLOCKING CONCEALED IN WALL FOR ALL FURNITURE, EQUIPMENT AND ACCESSORIES MOUNTED AND/OR SECURED TO WALL. TYPICAL OF ALL IN CONTRACT, NOT IN CONTRACT (NIC) AND DIVISION FURNISHED PRODUCTS (DFF). CONFIRM EXACT LOCATION OF LOCKING WITH CONTRACT ADMINISTRATOR PRIOR TO INSTALLATION.
- SWITCHES AND OUTLETS ARE SHOWN FOR LOCATIONAL PURPOSES ONLY (NIC). ALL DEVICES DISPLAYED, REFER TO ELECTRICAL FOR TYPE AND QUANTITY - TYPICAL.

ABBREVIATIONS & ACCESSORIES:

ADO	AUTOMATIC DOOR OPERATOR	NIC	NOT IN CONTRACT
CA	CARD ACCESS	DFF-A	DIVISION FURNISHED PRODUCT (CONTRACTOR INSTALLED)
CG	CORNER GUARD	DFF-B	DIVISION FURNISHED PRODUCT (VENDOR INSTALLED)
ELP	ELECTRICAL PANEL		
FB	ELECTRICAL FLOOR BOX	SIM.	SIMILAR
F.D.	FLOOR DRAIN	SL.	SLOPE
F.F.D.	FUNNEL FLOOR DRAIN		
FE	FIRE EXTINGUISHER (SURFACE MOUNTED)	W.CH	CHEMICAL DISPENSER (NIC)
FEC-A	FIRE EXTINGUISHER CABINET (SEMI-RECESSED)	W.FM	FRAMED MIRROR (610 x 915 mm)
FF	FORCE FLOW UNIT	W.HSD	HAND SANITIZER DISPENSER (DFF-A)
H.B.	HOSE BIB	W.KSD	KITCHEN SANITATION DISPENSER (NIC)
ID	INTERACTIVE DISPLAY (NIC)	W.LSD	LIQUID SOAP DISPENSER (DFF-A)
MB1	MARKERBOARD (2440 x 1220 mm)	W.MBR	MOP ROOM RACK
MB2	MARKERBOARD (1220 x 1220 mm)	W.NTW	NAPKIN/TAMPON WASTE (DFF-A)
M.O.	MASONRY OPENING	W.SCH	SAFETY COAT HOOK
		W.TD	PAPER TOWEL DISPENSER (DFF-A)
		W.TD2	TOILET PAPER DISPENSER (DFF-A)
		W.WR	WASTE RECEPTACLE (NIC)

LM esp
LM Architectural Group | Environmental Space Planning
500-136 Market Avenue Winnipeg, Manitoba Canada R3B 0P4
t: 204.942.0681 lm-esp.ca

1	ADDENDUM_2 - DRAWING_AB.4-R1	JT	04.25.24
0	ISSUED FOR CONSTRUCTION	JT	04.01.24
No.	REVISION/DESCRIPTION	BY	DATE

TM	HW	TM	JT
DRAWN	CHECKED	DESIGNED	APPROVED
DATE	USER APPROVAL		
2024.04.25			

THE CITY OF WINNIPEG
ASSETS & PROJECT MANAGEMENT
DEPARTMENT
MUNICIPAL ACCOMMODATIONS DIVISION
3-65 GARRY STREET, R3C 4K4

PROJECT
**PEMBINA TRAILS COLLEGIATE
VOCATIONAL WING**
TENDER NO. 954-2023B
50 FRONTIER TRAIL, WINNIPEG, MANITOBA, R3Y 2H1

SHEET TITLE
**INTERIOR ELEVATIONS
CULINARY ARTS AND
SUPPORT SPACES**

SCALE	PROJECT No:	SHEET No:
As indicated	2020-127	A8.4-R1