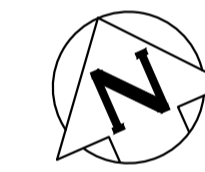
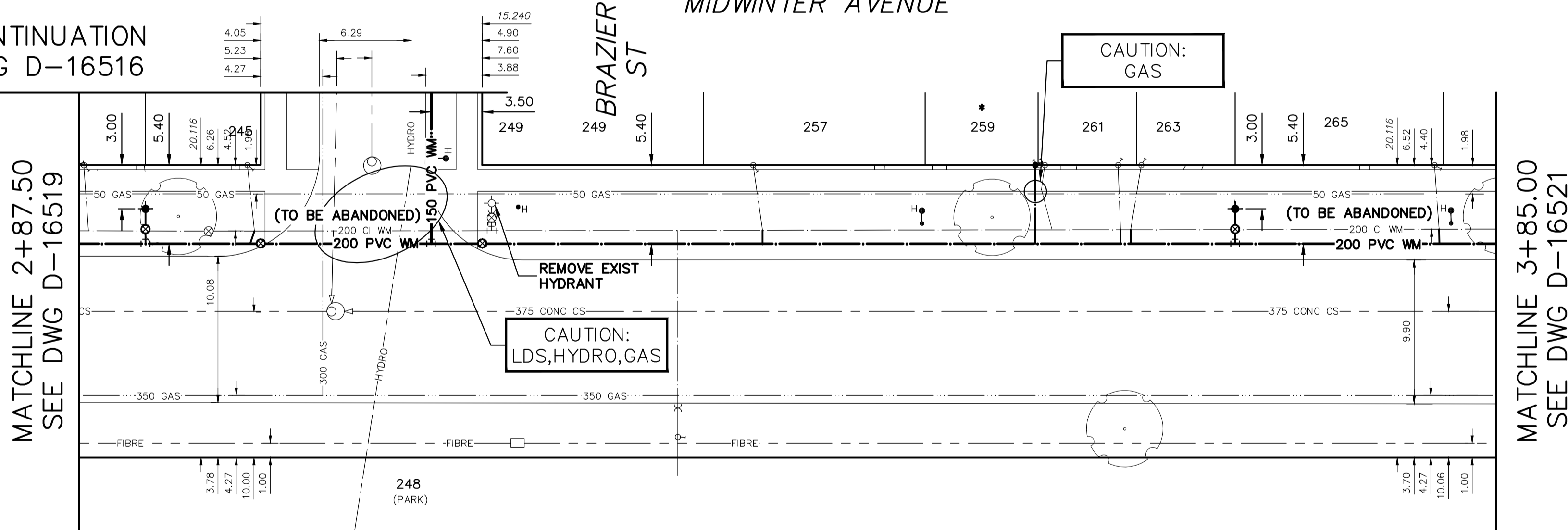


NOTE: CHAINAGES SHOWN ARE ALONG N. P. OF MIDWINTER AVE

FOR CONTINUATION
SEE DWG D-16516



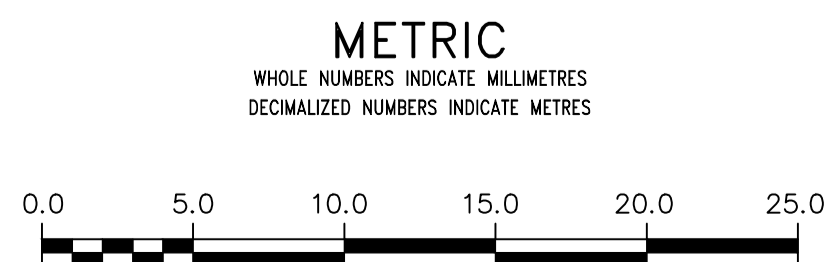
WATER SERVICE INFORMATION

ADDRESS	SIZE (mm) MATERIAL (STREET)	SIZE (mm) MATERIAL (PROP.)	SHORT & LONG MEASUREMENT	CORP LOCATION	REMARKS
245 MIDWINTER AVE	20 CU	20 CU	0.47 WEL HSE	0.5 E OF S/C	RECONNECT SERVICE
248 MIDWINTER AVE	50 CU	50 CU	0.914 WEL BRAZIER ST		RECONNECT SERVICE
249 MIDWINTER AVE	50 CU	50 CU	0.40 EWL PLATFORM	OPP OF VALVE	RECONNECT SERVICE
249 MIDWINTER AVE	-	-	13.423 EEL BRAZIER ST		NO HOUSE ON LOT
257 MIDWINTER AVE	20 CU	20 CU	2.14 WML HSE	0.6 E OF S/C	RECONNECT SERVICE
257 MIDWINTER AVE	20 CU	20 CU	18.642 EEL BRAZIER ST		RENEW TO R W/20 CU
259 MIDWINTER AVE	16 LEAD	12 LEAD	1.39 EEL HSE	0.4 E OF S/C	
259 MIDWINTER AVE	20 CU	20 CU	38.702 EEL BRAZIER ST		
261 MIDWINTER AVE	20 CU	20 CU	3.72 EEL HSE	0.2 E OF S/C	RECONNECT SERVICE
261 MIDWINTER AVE	20 CU	20 CU	43.799 EEL BRAZIER ST		
263 MIDWINTER AVE	20 CU	20 CU	5.11 WEL OF HSE	0.7 W OF S/C	RECONNECT SERVICE
263 MIDWINTER AVE	20 CU	20 CU	45.335 EEL BRAZIER ST		
265 MIDWINTER AVE	20 CU	20 CU	OPP EL HSE	0.4 E OF S/C	RECONNECT SERVICE
265 MIDWINTER AVE	20 CU	20 CU	65.509 EEL BRAZIER ST		

*SERVICES TO BE RENEWED TO R. ALL OTHERS TO BE RECONNECTED

FOR INDEX SEE
D-16515

NOTE: ALL VALVES TO BE INSTALLED
COUNTERCLOCKWISE TO CLOSE



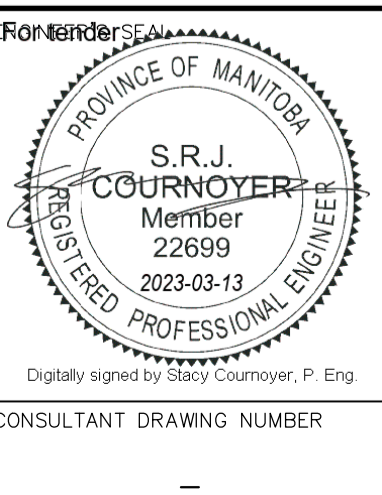
WARNING
IF POWER EQUIPMENT OR EXPLOSIVES ARE TO BE USED FOR EXCAVATION ON THIS PROJECT THE CONTRACTOR MUST:
1) NOTIFY THE GAS COMPANY OF THE PROPOSED LOCATION OF EXCAVATION.
2) TAKE PRECAUTION TO AVOID DAMAGE TO GAS COMPANY INSTALLATIONS.
SEE PROVINCIAL REGULATION 210/72 FOR DETAILS

LOCATION APPROVED
UNDERGROUND STRUCTURES
SUPV. U/G STRUCTURES COMMITTEE DATE
NOTE:
LOCATION OF UNDERGROUND STRUCTURES AS SHOWN ARE BASED ON THE BEST INFORMATION AVAILABLE BUT NO GUARANTEE IS GIVEN THAT ALL EXISTING UTILITIES ARE SHOWN OR THAT THE GIVEN LOCATIONS ARE EXACT. CONFIRMATION OF EXISTENCE AND EXACT LOCATION OF ALL SERVICES MUST BE OBTAINED FROM THE INDIVIDUAL UTILITIES BEFORE PROCEEDING WITH CONSTRUCTION.

VERTICAL DATUM: CGVD28 (HT2.0 Geoid)
HORIZONTAL DATUM: NAD83 (June 1990), Zone 14

NO.	REVISIONS	DATE	BY

DESIGNED BY	RG	CHECKED BY	SC
DRAWN BY	RS	APPROVED BY	KZ
SCALE:	HORIZONTAL 1:250 VERTICAL 1:50		
DATE	2023 03 06	DATE	Mar 9, 2023



THE CITY OF WINNIPEG
WATER AND WASTE DEPARTMENT
ENGINEERING DIVISION

2023 WATER MAIN RENEWALS
CONTRACT 6
MIDWINTER AVENUE
13.5 W OF BRAZIER STREET TO
70 E OF BRAZIER STREET

SHEET 7 OF 12
CITY DRAWING NUMBER
D-16520