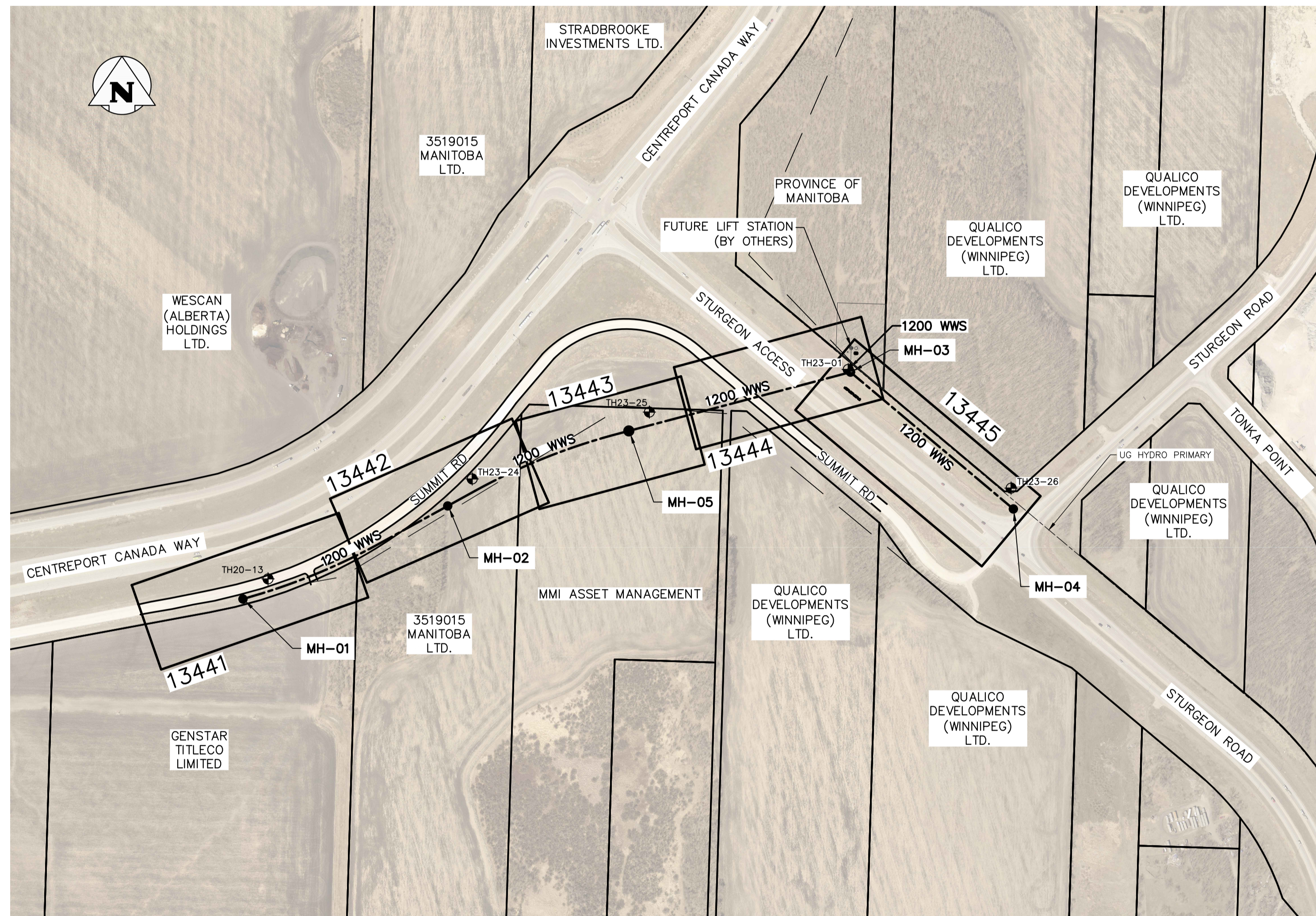


**DRAWING INDEX**

SHEET NUMBER	CITY OF WINNIPEG DRAWING NUMBER	DRAWING TITLE
1	13439	COVER SHEET
2	13440	DRAWING INDEX, LOCATION PLAN AND LEGEND
3	13441	CENTREPORT CANADA WAY - STA 0+100 TO STA 0+360
4	13442	CENTREPORT CANADA WAY - STA 0+360 TO STA 0+600
5	13443	CENTREPORT CANADA WAY - STA 0+600 TO STA 0+800
6	13444	CENTREPORT CANADA WAY - STA 0+800 TO STA 1+010
7	13445	STURGEON ACCESS - STA 0+985 TO STA 1+260
8	13446	MISCELLANEOUS DETAILS SHEET 1
9	13447	MISCELLANEOUS DETAILS SHEET 2

MANHOLE SCHEDULE						
REFERENCE	NORTHING	EASTING	DIAMETER	RIM	LOWEST INVERT	
MH-01	5529836.789	622415.777	2700	238.600	228.360	
MH-02	5529949.659	622665.609	2400	238.940	226.610	
MH-03	5530109.744	623147.769	3000	240.300	225.580	
MH-04	5529947.326	623341.138	2700	239.600	226.100	
MH-05	5530039.448	622882.404	2400	239.570	226.140	

TESTHOLE SCHEDULE		
REFERENCE	NORTHING	EASTING
TH20-13	5529862.390	622450.600
TH23-01	5530113.000	623145.000
TH23-24	5529982.000	622695.000
TH23-25	5530062.000	622907.000
TH23-26	5529971.000	623340.000



**INDEX, MANHOLE, & TESTHOLE LOCATION PLAN**  
SCALE: N.T.S.

**ABBREVIATIONS**

ABAND	ABANDONED
AC	ASBESTOS CEMENT
BLDG	BUILDING
B.M.	BENCH MARK
CB	CATCH BASIN
CI	CAST IRON
CI	CURB INLET
€	CENTER LINE
CONC	CONCRETE
CRN	CORNER
CS	COMBINED SEWER
C/S OR S/C	CURB STOP
CULV	CULVERT
C/W	CONSTRUCTED WITH
DI	DUCTILE IRON
E	EAST
ELEV	ELEVATION
EXIST	EXISTING
FCM	FIBRE OPTIC FEEDERMAIN
FIBRE	FIBRE OPTIC
FM	FEEDERMAIN
G.I.S.	GEOGRAPHIC INFORMATION SYSTEM
HDPE	HIGH DENSITY POLYETHYLENE
HORZ.	HORIZONTAL
HSE	HOUSE
HYD	HYDRANT
I.B.	IRON BAR
INV	INVERT
LDS	LAND DRAINAGE SEWER
MAX	MAXIMUM
MH	MANHOLE
MIN	MINIMUM
MTS	MANITOBA TELEPHONE SYSTEM
N	NORTH
OPP	OPPOSITE
PCCP	PRESTRESSED CONCRETE CYLINDER PIPE
€	PROPERTY LINE
PVC	POLYVINYL CHLORIDE
R.O.W.	RIGHT-OF-WAY
S	SOUTH
SL	STREET LIGHTING
TH	TEST HOLE
TS	TRAFFIC SIGNALS
TYP	TYPICAL
VC OR CLAY	VITRIFIED CLAY
VERT.	VERTICAL
W	WEST
W/W	WITH
WM	WATER MAIN
WWS	WASTE WATER SEWER
X-ING	CROSSING

**LEGEND**

DESCRIPTION	PLAN VIEW		
	ABANDONED	EXISTING	PROPOSED
WATER PIPE			
FIRE HYDRANT			
VALVE			
CURB STOP			
REDUCER			
COUPLING OR SLIDDER CROSS			
BEND - 11.25°, 22.5°, 45°, 90°			
TEE			
VERTICAL BEND			
ANODE			
REPAIR MARKER			
PLUG			
SEWER PIPE			
MANHOLE			
CATCH BASIN			
CURB INLET			
JUNCTION			
€ DITCH			
CULVERT			
SURVEY BAR			
SURVEY MONUMENT			
TREE - DECIDUOUS			
TREE - CONIFEROUS			
HYDRO			
HYDRO POLE			
LAMP STANDARD			
HYDRO POLE W/STREET LIGHTING			
POLE			
GUY ANCHOR			
M.T.S. POLE			
PEDESTAL OR BOX			
CABINET			
M.T.S., SHAW, OR VIDEON			
TRAFFIC SIGNALS			
TRAFFIC LIGHT STANDARD			
GAS			
STEAM			
FIBRE OPTIC			
FENCE			
EDGE OF PAVEMENT OR GUTTER			
EDGE UNPAVED OR GRAVEL ROAD			
PROJECTED €			
LOT LINE			
SIDEWALK - PATHWAY			
EASEMENT			
EDGE OF BUILDING			
MAILBOX			
PARKING METER			
TEST HOLE			
TREE LINE OR BUSH			
SURFACE MONITORING POINT			

**HATCH PATTERNS**

	EARTH OR GROUND ABOVE PIPE
	SAND OR OTHER FINE MATERIAL
	CONCRETE
	WASHED STONE OR GRANULAR MATERIAL
	INTERLOCKING STONE
	METAL
	GRAVEL OR STONE
	LAYDOWN AREA
	PIPE EASEMENT

**TESTHOLE HATCH PATTERNS**

	ORGANIC TOP SOIL
	ROCK FLOOR
	FILL (MADE GROUND)
	CLAY
	TILL
	SAND & GRAVEL
	LIMESTONE

**PROFILE**

DESCRIPTION	PROFILE		
	ABANDONED	EXISTING	PROPOSED
WATER PIPE			
HYDRANT TOP			
VALVE			
TEE OR CROSS			
COUPLING OR BEND			
REDUCER			
END OF PIPE			
SEWER PIPE			
UNPAVED GROUND SURFACE			
PAVED GROUND SURFACE - € PIPE			
GUTTER (NORTH AND WEST)			
GUTTER (SOUTH AND EAST)			
€ DITCH (NORTH AND WEST)			
€ DITCH (SOUTH AND EAST)			
STRUCTURE			
MANHOLE OR CATCH BASIN			

<p><b>PROPERTY LIMITS DELINEATION</b></p> <p>DELINEATION OF PROPERTY LIMITS AS SHOWN ON THIS DWG DOES NOT REPRESENT A "LEGAL SURVEY". KGS GROUP AND ASSOCIATED ENGINEERING MAKES NO REPRESENTATION OR WARRANTY AS TO THE ACCURACY OF PROPERTY LIMITS DELINEATED ON THIS DWG, NOR ON THE DIMENSIONAL ACCURACY OF DWG FEATURES RELATIVE TO THOSE PROPERTY LIMITS.</p> <p>WHOLE NUMBERS INDICATE MILLIMETRES DECIMALIZED NUMBERS INDICATE METRES</p>	<p><b>WARNING</b></p> <p>IF POWER EQUIPMENT OR EXPLOSIVES ARE TO BE USED FOR EXCAVATION ON THIS PROJECT THE CONTRACTOR MUST:</p> <p>1) NOTIFY THE GAS COMPANY OF THE PROPOSED LOCATION OF EXCAVATION.</p> <p>2) TAKE PRECAUTION TO AVOID DAMAGE TO GAS COMPANY INSTALLATIONS.</p> <p>SEE PROVINCIAL REGULATION 210/72 FOR DETAILS</p>	<p><b>LOCATION APPROVED UNDERGROUND STRUCTURES</b></p> <p>SUPV. U/G STRUCTURES COMMITTEE _____ DATE _____</p> <p>NOTE:</p> <p>LOCATION OF UNDERGROUND STRUCTURES AS SHOWN ARE BASED ON THE BEST INFORMATION AVAILABLE BUT NO GUARANTEE IS GIVEN THAT ALL EXISTING UTILITIES ARE SHOWN OR THAT THE GIVEN LOCATIONS ARE EXACT. CONFIRMATION OF EXISTENCE AND EXACT LOCATION OF ALL SERVICES MUST BE OBTAINED FROM THE INDIVIDUAL UTILITIES BEFORE PROCEEDING WITH CONSTRUCTION.</p>	<p>VERTICAL DATUM: CGVD28 (HT2.0 Geoid)</p> <p>HORIZONTAL DATUM: NAD83 (June 1990), Zone 14</p>	<p><b>KGS GROUP</b></p> <p><b>AE Associated Engineering</b></p>	<p>ENGINEER'S SEAL TUNNELLING WORKS</p> <p>THE ORIGINAL ISSUE REV. 0 WAS STAMPED, DATED AND SIGNED</p> <p>BY: <u>J.S. LUEKE</u> ON: <u>19 04 2024</u> D/M/Y</p>	<p>ENGINEER'S SEAL CIVIL WORKS</p> <p>THE ORIGINAL ISSUE REV. 0 WAS STAMPED, DATED AND SIGNED</p> <p>BY: <u>R.B. OFFMAN</u> ON: <u>19 04 2024</u> D/M/Y</p>	<p><b>THE CITY OF WINNIPEG</b></p> <p>WATER AND WASTE DEPARTMENT ENGINEERING SERVICES DIVISION</p> <p>CENTREPORT SOUTH REGIONAL WATER AND WASTEWATER SERVICING - PHASE 1A (CONTRACT 3)</p> <p><b>DRAWING INDEX, LOCATION PLAN AND LEGEND</b></p>	<p>SHEET <b>2</b> OF <b>9</b></p> <p>CITY DRAWING NUMBER <b>13440</b></p>										
			<table border="1"> <thead> <tr> <th>NO.</th> <th>ISSUED</th> <th>REVISIONS</th> <th>DATE</th> <th>BY</th> </tr> </thead> <tbody> <tr> <td>1</td> <td>ISSUED WITH ADDENDUM 1</td> <td></td> <td>2024/05/08</td> <td>NGV</td> </tr> <tr> <td>0</td> <td>ISSUED FOR TENDER</td> <td></td> <td>2024/04/19</td> <td>NGV</td> </tr> </tbody> </table>		NO.	ISSUED			REVISIONS	DATE	BY	1	ISSUED WITH ADDENDUM 1		2024/05/08	NGV	0	ISSUED FOR TENDER
NO.	ISSUED	REVISIONS	DATE	BY														
1	ISSUED WITH ADDENDUM 1		2024/05/08	NGV														
0	ISSUED FOR TENDER		2024/04/19	NGV														