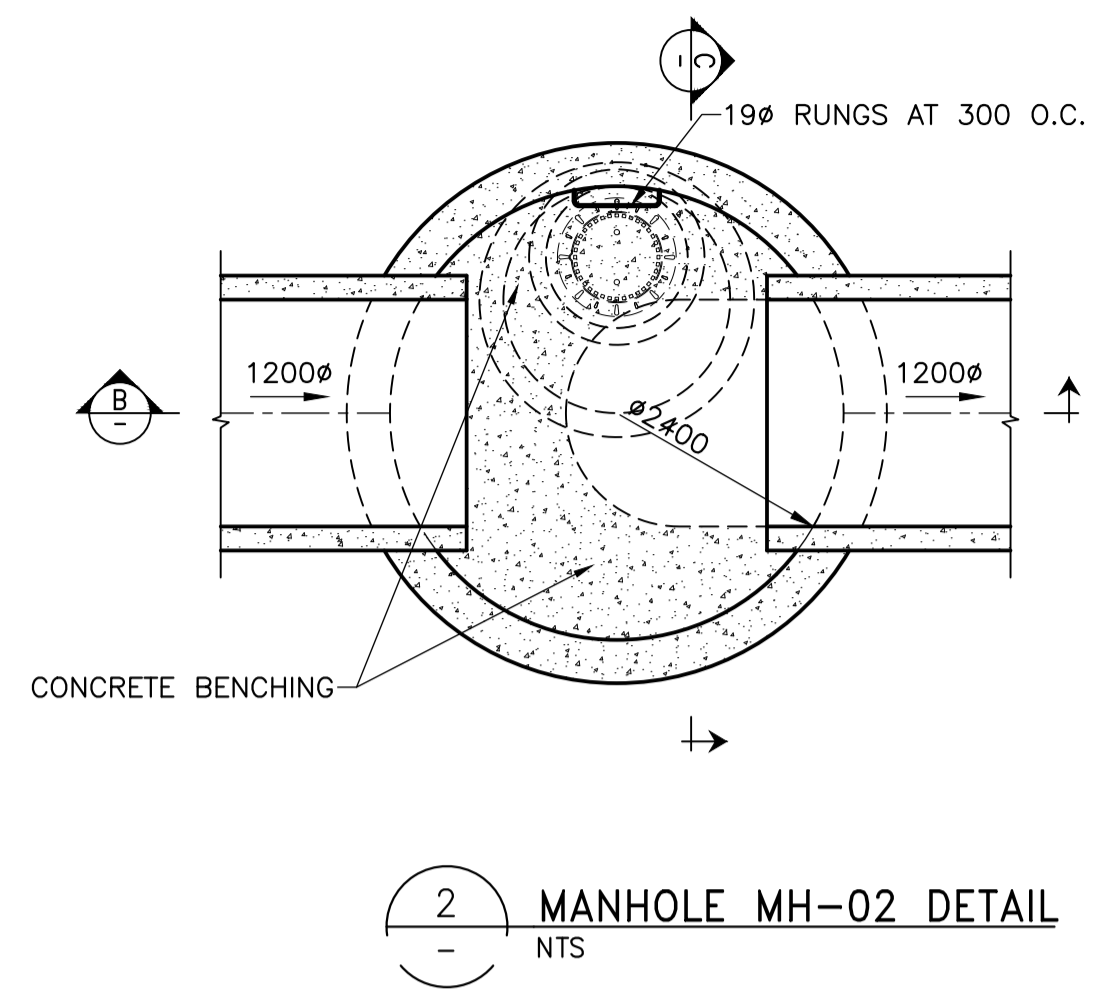
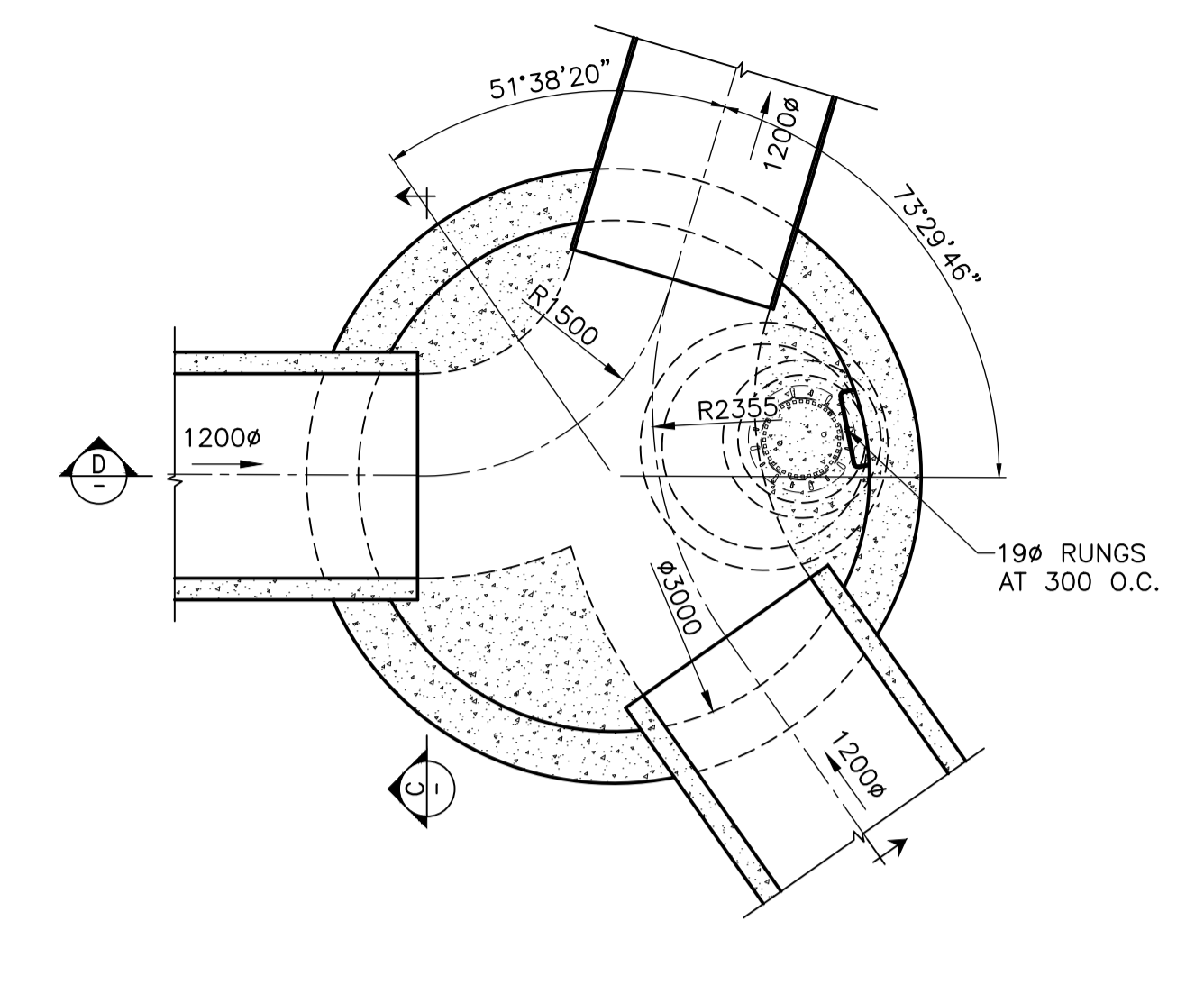


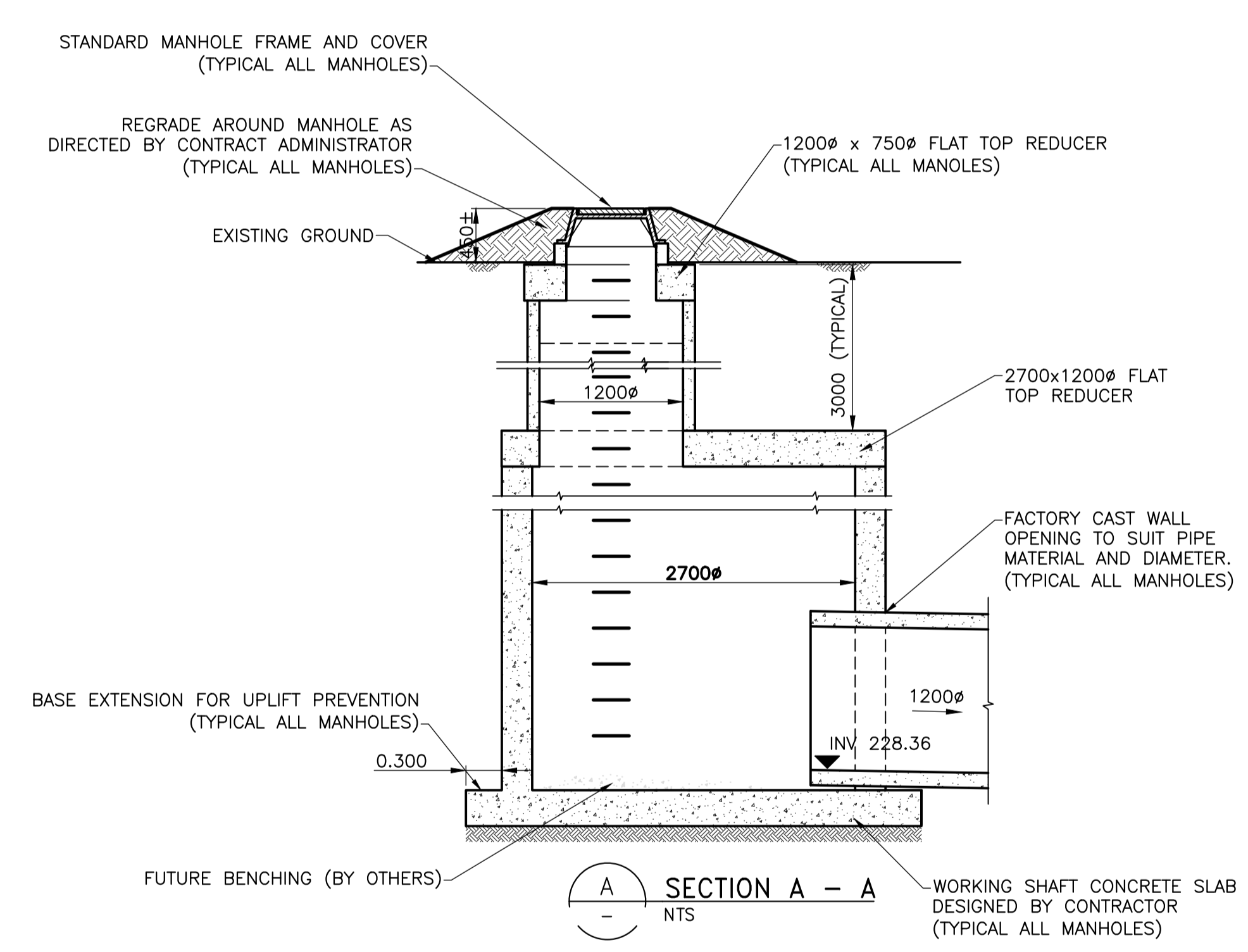
1 MANHOLE MH-01 & MH-04 DETAIL
NTS



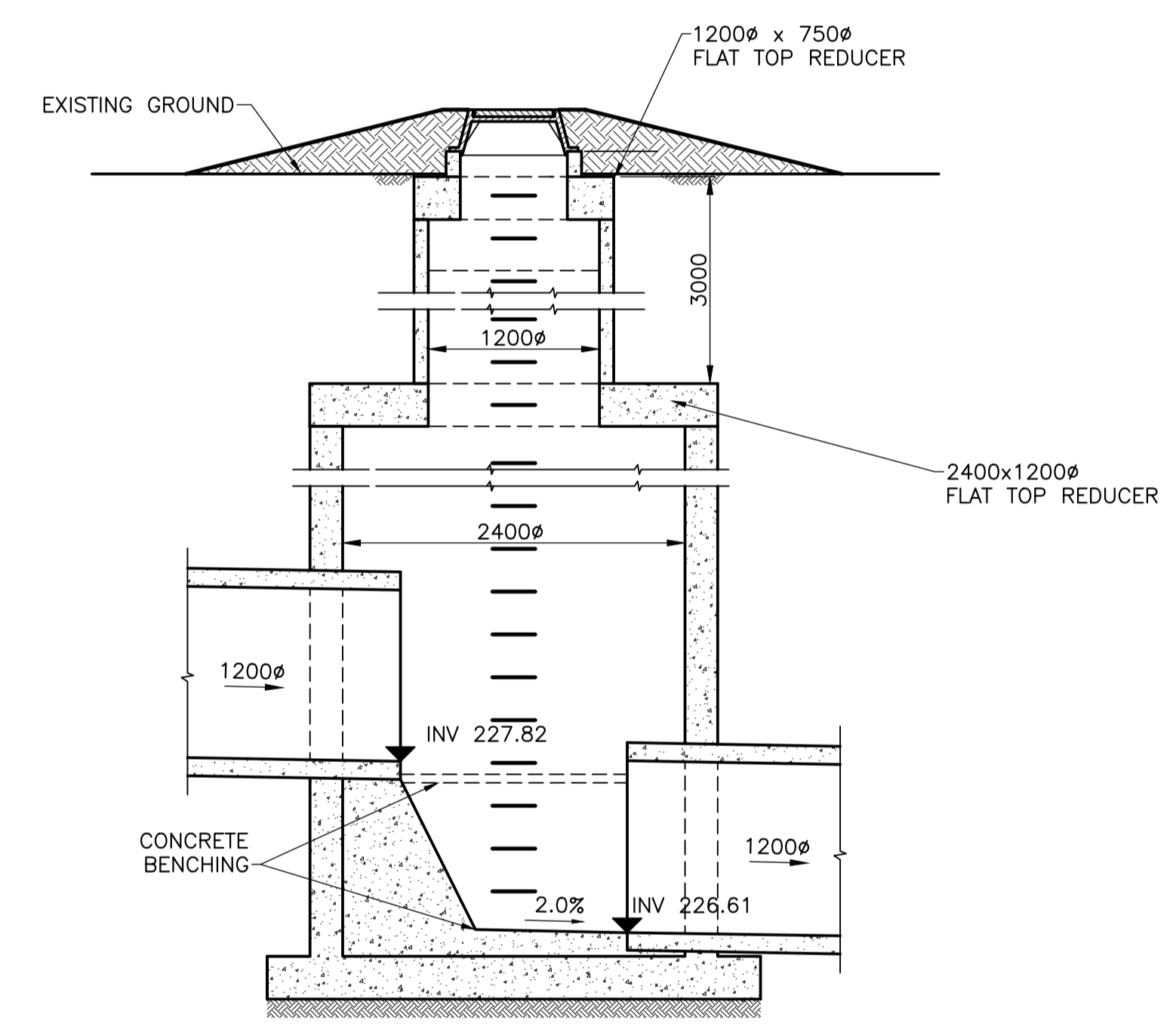
2 MANHOLE MH-02 DETAIL
NTS



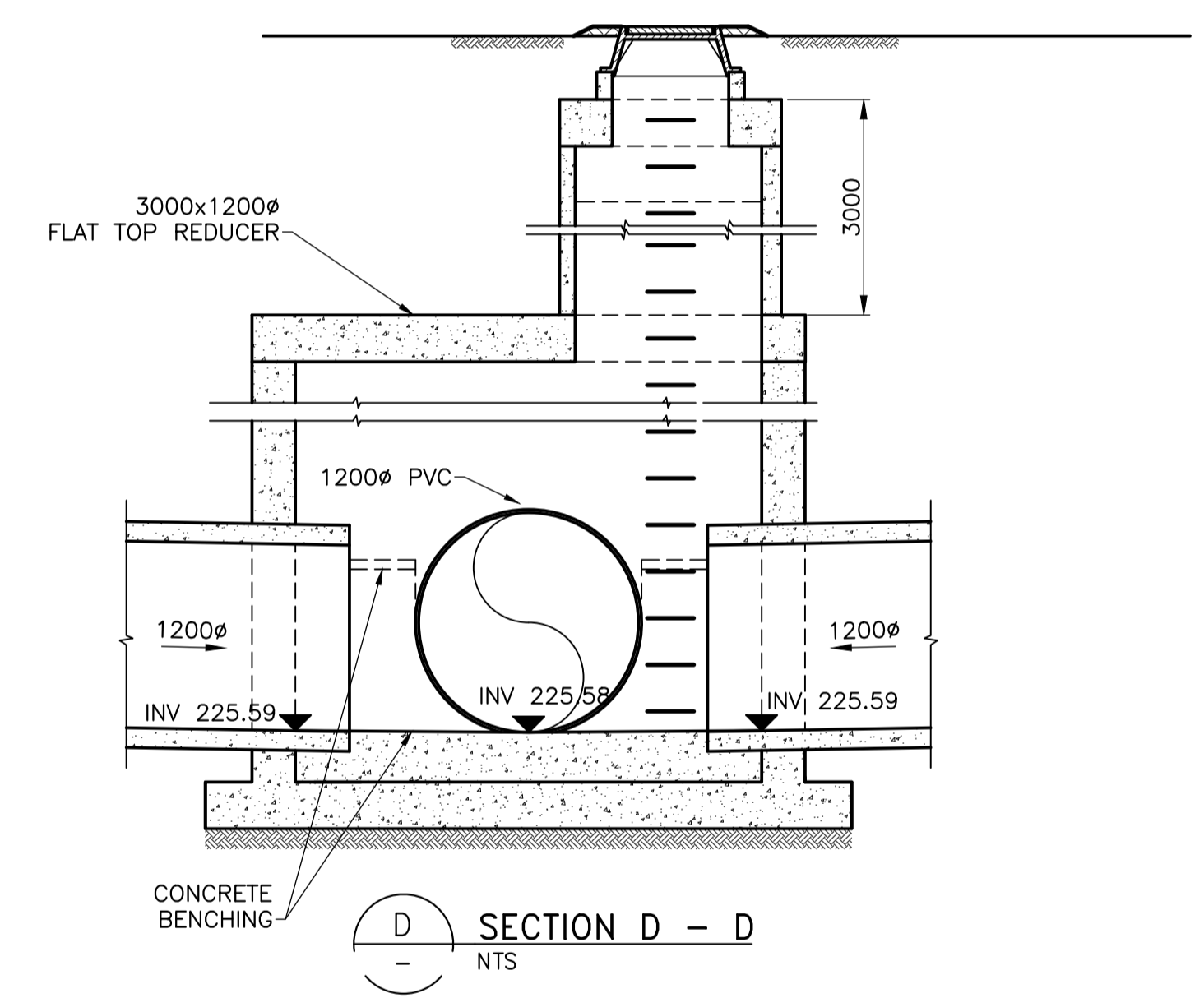
3 MANHOLE MH-03 DETAIL
NTS



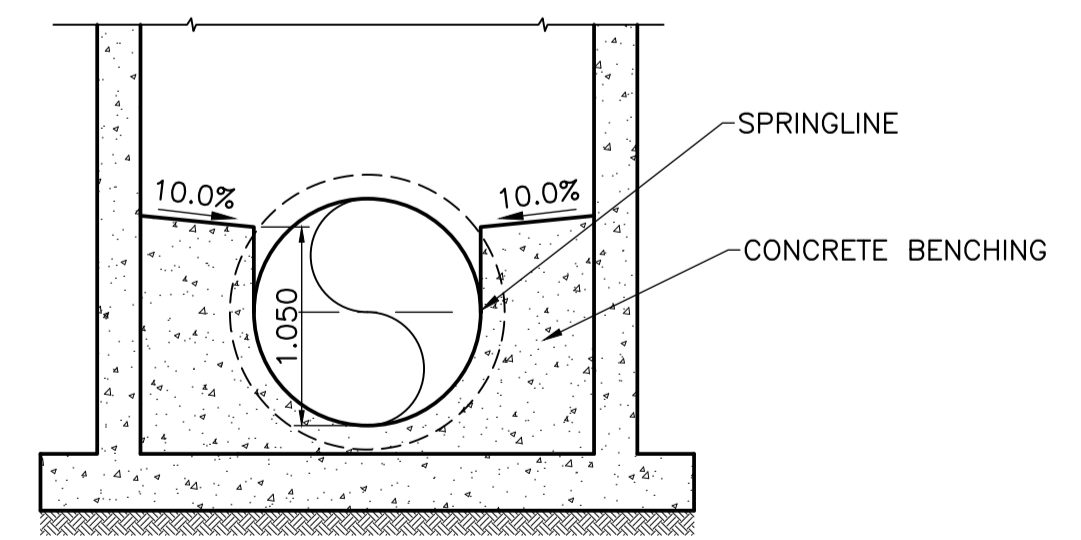
A SECTION A - A
NTS



B SECTION B - B
NTS



D SECTION D - D
NTS



C SECTION C - C
NTS

- TYPICAL MANHOLE NOTES:**
- LADDER RUNGS:**
- LADDER RUNGS TO BE POLYCOATED ALUMINUM, MSU MODEL 360 OR APPROVED EQUIVALENT.
 - DIMENSIONS AND SPACING TO CITY OF WINNIPEG STANDARD NO. CoW-SM-14.
- CONCRETE PROTECTION:**
- MANHOLES TO BE HDPE LINED WITH 4mm THICK HDPE LINER TO BE IN ACCORDANCE WITH SPECIFICATION E23.
 - EPOXY COAT UNLINED MAHOLE INTERIOR INCLUDING PRECAST RINGS, UNLINED JACKING PIPE ENDS, CAST-IN-PLACE CONCRETE BENCHING, AND MORTARED PIPE-TO-MANHOLE CONNECTIONS.
 - EPOXY COATING TO BE IN ACCORDANCE WITH SPECIFICATION 23.
- CAST-IN-PLACE MATERIALS:**
- CAST-IN-PLACE CONCRETE BENCHING AND PIPE-TO-MANHOLE CONNECTIONS GROUT/MORTAR IN ACCORDANCE CW2160.
- BACKFILL:**
- CEMENT STABILIZED FILL IN ACCORDANCE WITH CONTRACT SPECIFICATIONS.

- NOTES:**
- REFER TO GENERAL NOTES PERTAINING TO PRECAST MAINTENANCE HOLES.

FOR INDEX SEE
C-3-102

PROPERTY LIMITS DELINEATION DELINEATION OF PROPERTY LIMITS AS SHOWN ON THIS DWG DOES NOT REPRESENT A "LEGAL SURVEY". KGS GROUP AND ASSOCIATED ENGINEERING MAKES NO REPRESENTATION OR WARRANTY AS TO THE ACCURACY OF PROPERTY LIMITS DELINEATED ON THIS DWG, NOR ON THE DIMENSIONAL ACCURACY OF DWG FEATURES RELATIVE TO THOSE PROPERTY LIMITS.	WARNING IF POWER EQUIPMENT OR EXPLOSIVES ARE TO BE USED FOR EXCAVATION ON THIS PROJECT THE CONTRACTOR MUST: 1) NOTIFY THE GAS COMPANY OF THE PROPOSED LOCATION OF EXCAVATION. 2) TAKE PRECAUTION TO AVOID DAMAGE TO GAS COMPANY INSTALLATIONS. SEE PROVINCIAL REGULATION 21072 FOR DETAILS	LOCATION APPROVED UNDERGROUND STRUCTURES SUPV. U/G STRUCTURES COMMITTEE _____ DATE _____ NOTE: LOCATION OF UNDERGROUND STRUCTURES AS SHOWN ARE BASED ON THE BEST INFORMATION AVAILABLE BUT NO GUARANTEE IS GIVEN THAT ALL EXISTING UTILITIES ARE SHOWN OR THAT THE GIVEN LOCATIONS ARE EXACT. CONFIRMATION OF EXISTENCE AND EXACT LOCATION OF ALL SERVICES MUST BE OBTAINED FROM THE INDIVIDUAL UTILITIES BEFORE PROCEEDING WITH CONSTRUCTION.	VERTICAL DATUM: CGVD28 (HT2.0 Geoid) HORIZONTAL DATUM: NAD83 (June 1990), Zone 14	KGS GROUP AE Associated Engineering	ENGINEER'S SEAL TUNNELLING WORKS THE ORIGINAL ISSUE REV. 0 WAS STAMPED, DATED AND SIGNED BY <u>J.S. LUEKE</u> ON <u>19 04 2024</u> D/M/Y	ENGINEER'S SEAL CIVIL WORKS THE ORIGINAL ISSUE REV. 0 WAS STAMPED, DATED AND SIGNED BY <u>R.B. OFFMAN</u> ON <u>19 04 2024</u> D/M/Y	THE CITY OF WINNIPEG WATER AND WASTE DEPARTMENT ENGINEERING SERVICES DIVISION CENTREPORT SOUTH REGIONAL WATER AND WASTEWATER SERVICING - PHASE 1A (CONTRACT 3) MISCELLANEOUS DETAILS SHEET 2	SHEET 9 OF 9 CITY DRAWING NUMBER 13447								
			<table border="1"> <thead> <tr> <th>NO.</th> <th>REVISIONS</th> <th>DATE (YYYY/MM/DD)</th> <th>BY</th> </tr> </thead> <tbody> <tr> <td>1</td> <td>ISSUED WITH ADDENDUM 1</td> <td>2024/05/08</td> <td>NGV</td> </tr> <tr> <td>0</td> <td>ISSUED FOR TENDER</td> <td>2024/04/19</td> <td>NGV</td> </tr> </tbody> </table>		NO.	REVISIONS		DATE (YYYY/MM/DD)	BY	1	ISSUED WITH ADDENDUM 1	2024/05/08	NGV	0	ISSUED FOR TENDER	2024/04/19
NO.	REVISIONS	DATE (YYYY/MM/DD)	BY													
1	ISSUED WITH ADDENDUM 1	2024/05/08	NGV													
0	ISSUED FOR TENDER	2024/04/19	NGV													