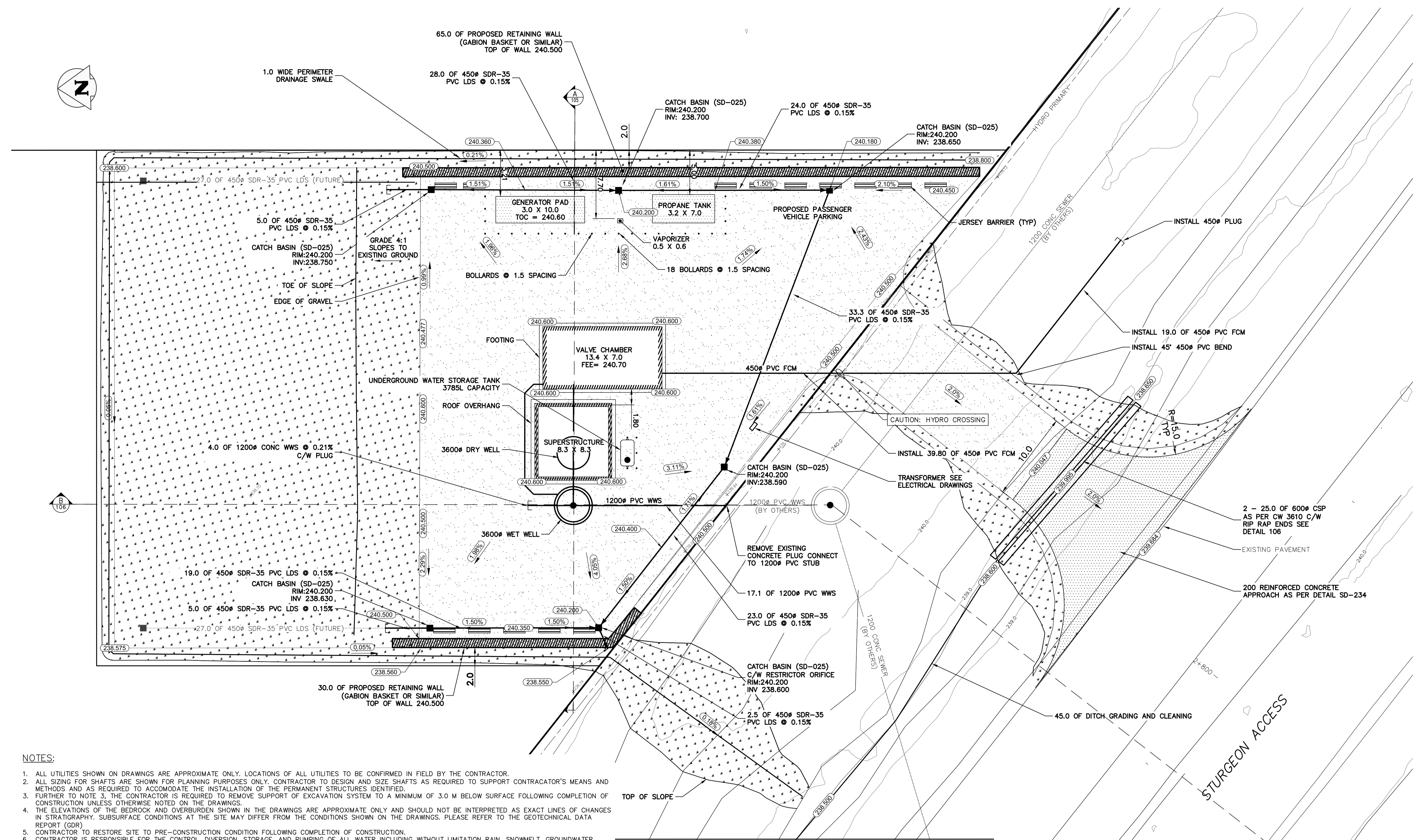
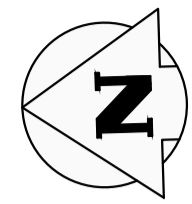


APPENDIX C

FUTURE LIFT STATION FINAL SITE GRADING (DRAFT)

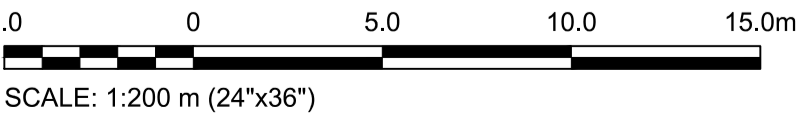


- NOTES:**
1. ALL UTILITIES SHOWN ON DRAWINGS ARE APPROXIMATE ONLY. LOCATIONS OF ALL UTILITIES TO BE CONFIRMED IN FIELD BY THE CONTRACTOR.
 2. ALL SIZING FOR SHAFTS ARE SHOWN FOR PLANNING PURPOSES ONLY. CONTRACTOR TO DESIGN AND SIZE SHAFTS AS REQUIRED TO SUPPORT CONTRACTOR'S MEANS AND METHODS AND AS REQUIRED TO ACCOMMODATE THE INSTALLATION OF THE PERMANENT STRUCTURES IDENTIFIED.
 3. FURTHER TO NOTE 2, THE CONTRACTOR IS REQUIRED TO REMOVE SUPPORT OF EXCAVATION SYSTEM TO A MINIMUM OF 3.0 M BELOW SURFACE FOLLOWING COMPLETION OF CONSTRUCTION UNLESS OTHERWISE NOTED ON THE DRAWINGS.
 4. THE ELEVATIONS OF THE BEDROCK AND OVERBURDEN SHOWN IN THE DRAWINGS ARE APPROXIMATE ONLY AND SHOULD NOT BE INTERPRETED AS EXACT LINES OF CHANGES IN STRATIGRAPHY. SUBSURFACE CONDITIONS AT THE SITE MAY DIFFER FROM THE CONDITIONS SHOWN ON THE DRAWINGS. PLEASE REFER TO THE GEOTECHNICAL DATA REPORT (GDR)
 5. CONTRACTOR TO RESTORE SITE TO PRE-CONSTRUCTION CONDITION FOLLOWING COMPLETION OF CONSTRUCTION.
 6. CONTRACTOR IS RESPONSIBLE FOR THE CONTROL, DIVERSION, STORAGE, AND PUMPING OF ALL WATER INCLUDING WITHOUT LIMITATION RAIN, SNOWMELT, GROUNDWATER, AND/OR LEAKING INFRASTRUCTURE THROUGHOUT ALL STAGES OF THE WORK. REFERENCE D19 IN THE CONTRACT DOCUMENTS.
 7. CONTRACTOR IS RESPONSIBLE TO DEVELOP SUITABLE SITE ACCESS AS REQUIRED TO FACILITATE THE WORK, INCLUDING BUT NOT LIMITED TO CONSTRUCTION OF TEMPORARY RAMPING/ACCESS ROADS, EXCAVATION AND REGRADE TO DEVELOP FLAT WORKING SURFACES AROUND SHAFTS AND WITHIN LAYDOWN AREAS AS REQUIRED, AND INSTALLATION OF TEMPORARY FENCING AND SIGNAGE.

SEE INTERCEPTOR DRAWINGS FOR CONTINUATION (BY OTHERS)

FOR INDEX SEE C-1A-102

PRELIMINARY
NOT TO BE USED FOR CONSTRUCTION



WHOLE NUMBERS INDICATE MILLIMETRES
DECIMALIZED NUMBERS INDICATE METRES

PROPERTY LIMITS DELINEATION
DELINEATION OF PROPERTY LIMITS AS SHOWN ON THIS DWG DOES NOT REPRESENT A "LEGAL SURVEY". KGS GROUP MAKES NO REPRESENTATION OR WARRANTY AS TO THE ACCURACY OF PROPERTY LIMITS DELINEATED ON THIS DWG, NOR ON THE DIMENSIONAL ACCURACY OF DWG FEATURES RELATIVE TO THOSE PROPERTY LIMITS.

WARNING
IF POWER EQUIPMENT OR EXPLOSIVES ARE TO BE USED FOR EXCAVATION ON THIS PROJECT THE CONTRACTOR MUST:
1) NOTIFY THE GAS COMPANY OF THE PROPOSED LOCATION OF EXCAVATION.
2) TAKE PRECAUTION TO AVOID DAMAGE TO GAS COMPANY INSTALLATIONS.
SEE PROVINCIAL REGULATION 210/72 FOR DETAILS

LOCATION APPROVED UNDERGROUND STRUCTURES
SHPV, U/G STRUCTURES COMMITTEE DATE
NOTE:
LOCATION OF UNDERGROUND STRUCTURES AS SHOWN ARE BASED ON THE BEST INFORMATION AVAILABLE BUT NO GUARANTEE IS GIVEN THAT ALL EXISTING UTILITIES ARE SHOWN OR THAT THE GIVEN LOCATIONS ARE EXACT. CONFIRMATION OF EXISTENCE AND EXACT LOCATION OF ALL SERVICES MUST BE OBTAINED FROM THE INDIVIDUAL UTILITIES BEFORE PROCEEDING WITH CONSTRUCTION.

VERTICAL DATUM: CGVD28 (HT2.0 Geoid)	
HORIZONTAL DATUM: NAD83 (June 1990), Zone 14	
NO.	REVISIONS
A	ISSUED FOR 75% REVIEW
DATE	2024/04/05
BY	GLG

KGS GROUP		Associated Engineering	
DESIGNED BY	GLG	CHECKED BY	HJM
DRAWN BY	GLG	APPROVED BY	HJM
SCALE: HORIZONTAL AS NOTED		RELEASED FOR CONSTRUCTION	
DATE		DATE	

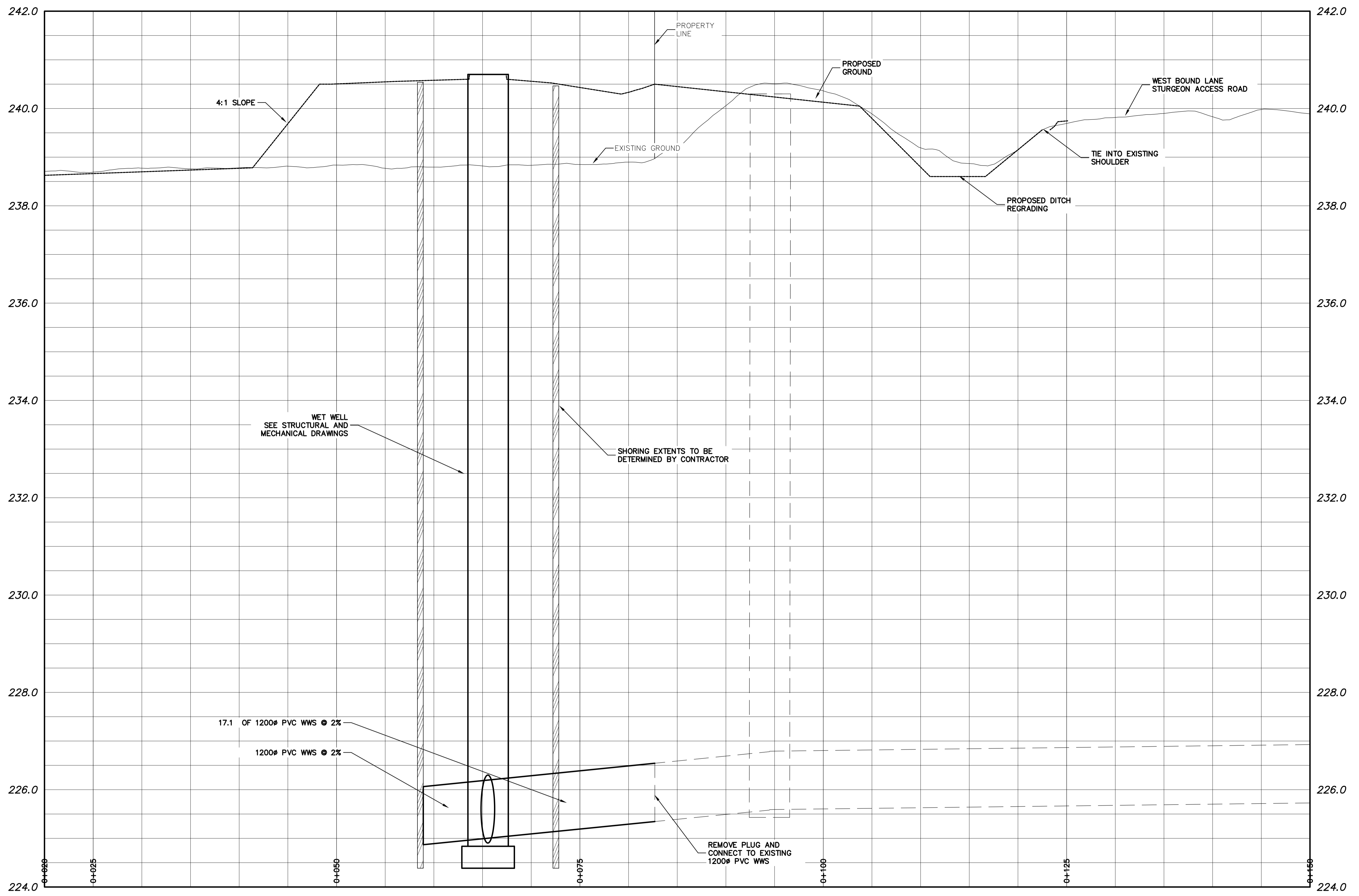
ENGINEER'S SEAL
CONSULTANT DRAWING NUMBER
C-1A-104

THE CITY OF WINNIPEG
WATER AND WASTE DEPARTMENT
ENGINEERING SERVICES DIVISION

CENTREPORT SOUTH REGIONAL WATER AND WASTEWATER SERVICING - PHASE 1A CONTRACT 1A - LIFT STATION

GRADING AND SERVICING SITE PLAN

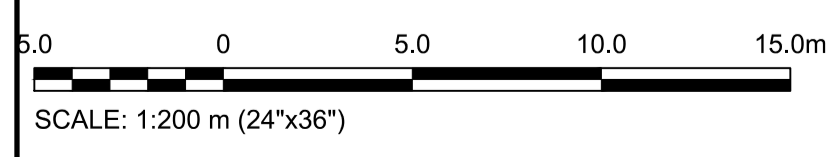
SHEET 4 OF 86
CITY DRAWING NUMBER
XX-XXXX



SECTION B-B
 HOR. SCALE: 1:200
 VERT. SCALE: 1:80

FOR INDEX SEE
 C-1A-102

PRELIMINARY
 NOT TO BE USED FOR CONSTRUCTION



WHOLE NUMBERS INDICATE MILLIMETRES
 DECIMALIZED NUMBERS INDICATE METRES

PROPERTY LIMITS DELINEATION
 DELINEATION OF PROPERTY LIMITS AS SHOWN ON THIS DWG DOES NOT REPRESENT A "LEGAL SURVEY". KGS GROUP MAKES NO REPRESENTATION OR WARRANTY AS TO THE ACCURACY OF PROPERTY LIMITS DELINEATED ON THIS DWG, NOR ON THE DIMENSIONAL ACCURACY OF DWG FEATURES RELATIVE TO THOSE PROPERTY LIMITS.

WARNING
 IF POWER EQUIPMENT OR EXPLOSIVES ARE TO BE USED FOR EXCAVATION ON THIS PROJECT THE CONTRACTOR MUST:
 1) NOTIFY THE GAS COMPANY OF THE PROPOSED LOCATION OF EXCAVATION.
 2) TAKE PRECAUTION TO AVOID DAMAGE TO GAS COMPANY INSTALLATIONS.
 SEE PROVINCIAL REGULATION 210/72 FOR DETAILS

LOCATION APPROVED UNDERGROUND STRUCTURES
 SUPV. U/G STRUCTURES COMMITTEE DATE
 NOTE:
 LOCATION OF UNDERGROUND STRUCTURES AS SHOWN ARE BASED ON THE BEST INFORMATION AVAILABLE BUT NO GUARANTEE IS GIVEN THAT ALL EXISTING UTILITIES ARE SHOWN OR THAT THE GIVEN LOCATIONS ARE EXACT. CONFIRMATION OF EXISTENCE AND EXACT LOCATION OF ALL SERVICES MUST BE OBTAINED FROM THE INDIVIDUAL UTILITIES BEFORE PROCEEDING WITH CONSTRUCTION.

VERTICAL DATUM: CGVD28 (HT2.0 Geoid)	
HORIZONTAL DATUM: NAD83 (June 1990), Zone 14	
NO.	REVISIONS
A	ISSUED FOR 75% REVIEW
DATE	2024/04/05
BY	GLG

KGS GROUP		AE Associated Engineering	
DESIGNED BY	GLG	CHECKED BY	HJM
DRAWN BY	GLG	APPROVED BY	HJM
SCALE:	HORIZONTAL AS NOTED	RELEASED FOR CONSTRUCTION	
VERTICAL		DATE	

ENGINEER'S SEAL
 CONSULTANT DRAWING NUMBER
 C-1A-106

THE CITY OF WINNIPEG
 WATER AND WASTE DEPARTMENT
 ENGINEERING SERVICES DIVISION

Winnipeg

CENTREPORT SOUTH REGIONAL WATER AND WASTEWATER SERVICING - PHASE 1A CONTRACT 1A - LIFT STATION SECTIONS

SHEET 6 OF 86
 CITY DRAWING NUMBER
 XX-XXXX

PLOT DATE: 2024 04 08

BID OPP: ###-20##
 CONTRACT NUMBER: #

FILE PATH: U:\FMS\23-0107-009\
 FILE NAME: 23-0107-009_C1A_Lift Station_CALL.dwg