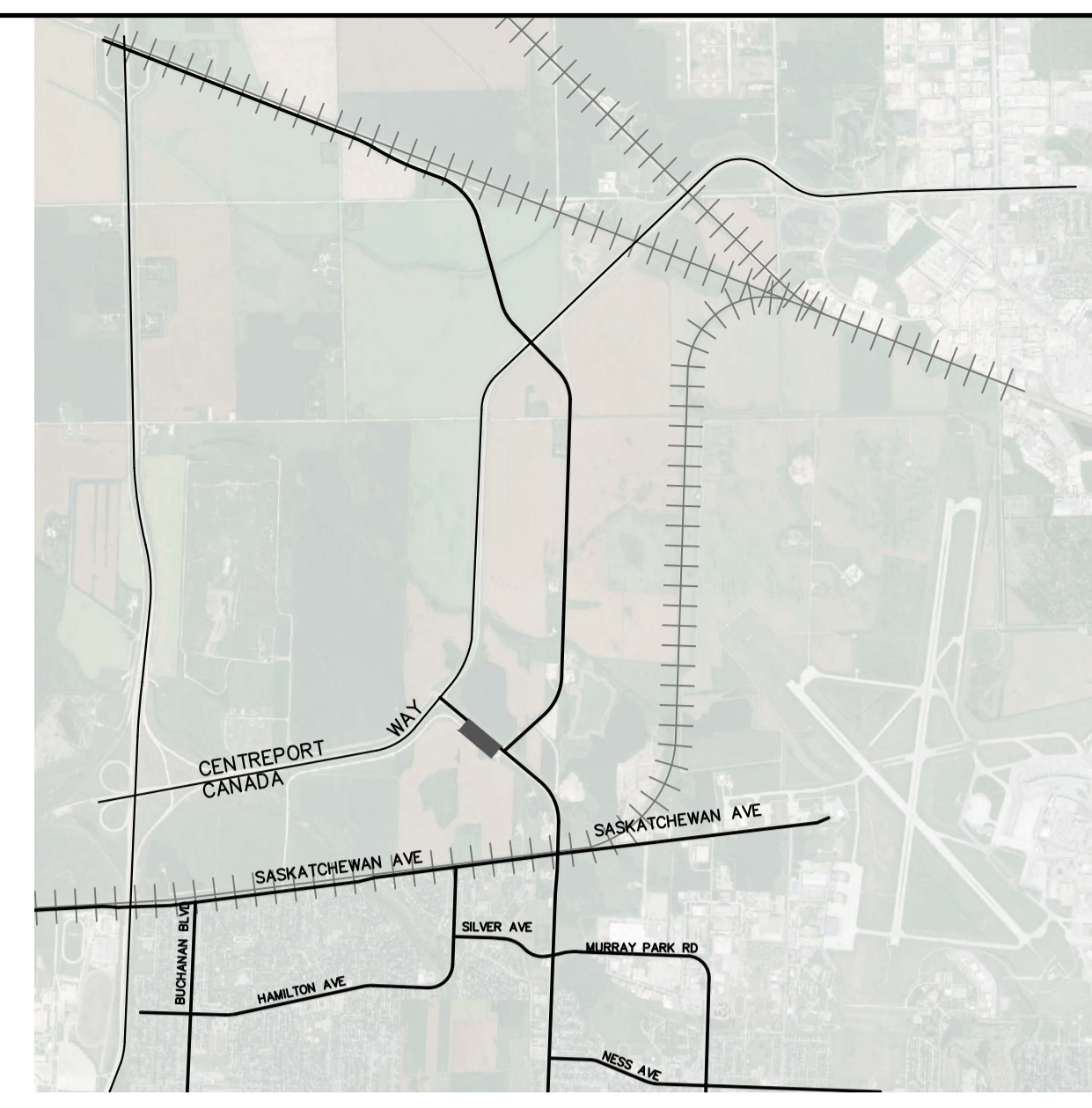


NOTE: CHAINAGES SHOWN ARE ALONG CL OF PROPOSED WWS

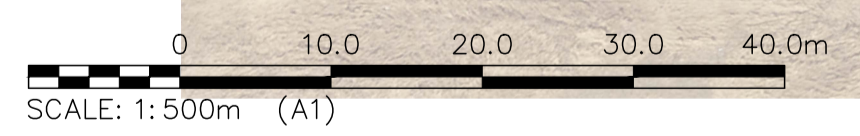
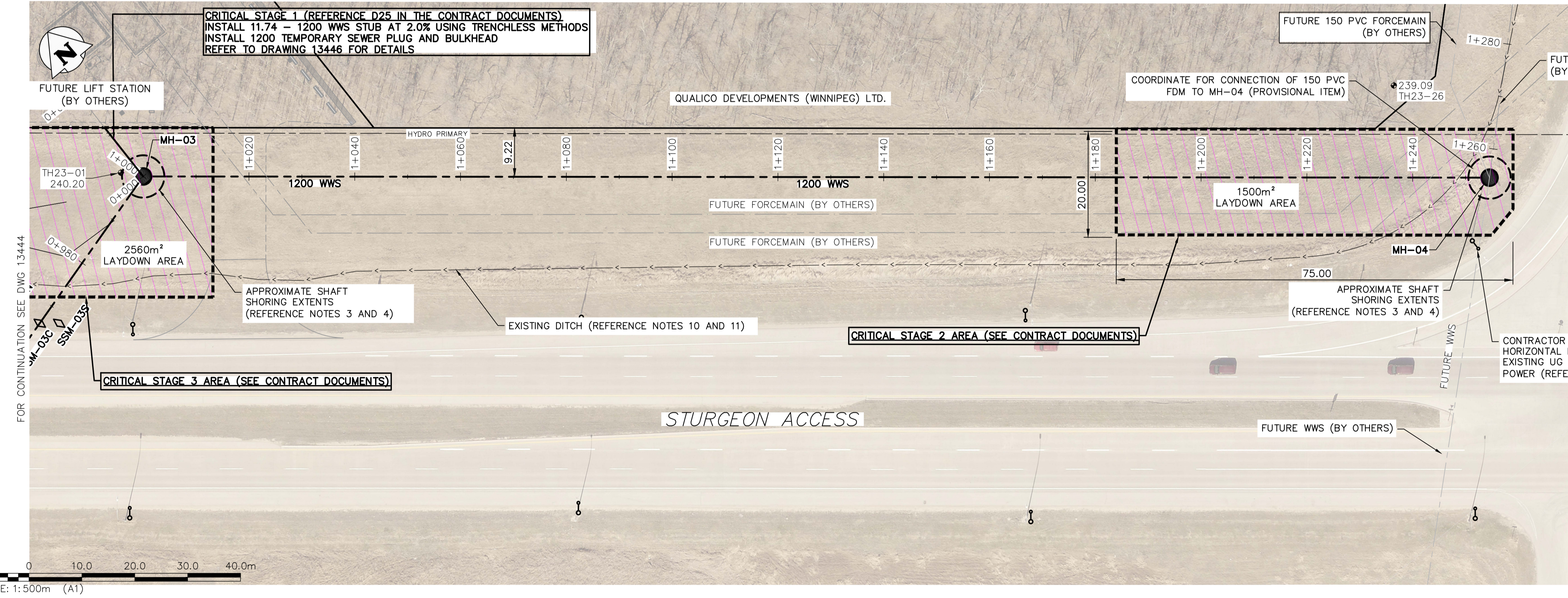
KGS GROUP AND ASSOCIATED ENGINEERING ARE NOT RESPONSIBLE FOR ANY CLAIMS, DAMAGES, OR LIABILITY ASSOCIATED WITH INTERPRETATION OF SUBSURFACE DATA OR FOR REUSE OF SUBSURFACE DATA.



KEY PLAN
SCALE: 1:50,000

NOTES:

- ALL UTILITIES SHOWN ON DRAWINGS ARE APPROXIMATE ONLY. LOCATIONS OF ALL UTILITIES TO BE CONFIRMED IN FIELD BY THE CONTRACTOR. REFERENCE SECTION E17 IN THE CONTRACT DOCUMENTS.
- INSTALL NEW SEWER BY MICROTUNNELLING METHODS, UNLESS OTHERWISE NOTED.
- ALL SIZING FOR SHAFTS ARE SHOWN FOR PLANNING PURPOSES ONLY. CONTRACTOR TO DESIGN AND SIZE SHAFTS AS REQUIRED TO SUPPORT CONTRACTOR'S MEANS AND METHODS AND AS REQUIRED TO ACCOMMODATE THE INSTALLATION OF THE PERMANENT STRUCTURES IDENTIFIED.
- FURTHER TO NOTE 3, THE CONTRACTOR IS REQUIRED TO REMOVE SUPPORT OF EXCAVATION SYSTEM TO A MINIMUM OF 3.0 M BELOW SURFACE FOLLOWING COMPLETION OF CONSTRUCTION UNLESS OTHERWISE NOTED ON THE DRAWINGS.
- THE EXISTING GROUND ELEVATIONS SHOWN ON THE DRAWINGS ARE BASED ON LIDAR DATA OBTAINED NOV 2020.
- THE ELEVATIONS OF THE BEDROCK AND OVERBURDEN SHOWN IN THE DRAWINGS ARE APPROXIMATE ONLY AND SHOULD NOT BE INTERPRETED AS EXACT LINES OF CHANGES IN STRATIGRAPHY. SUBSURFACE CONDITIONS AT THE SITE MAY DIFFER FROM THE CONDITIONS SHOWN ON THE DRAWINGS. PLEASE REFER TO THE GEOTECHNICAL DATA REPORT (GDR) FOR LIMITATIONS OF THE GEOTECHNICAL INFORMATION OBTAINED FROM BOREHOLE DRILLING AND GEOPHYSICAL SEISMIC REFRACTION METHOD.
- CONTRACTOR TO REFERENCE THE GEOTECHNICAL BASELINE REPORT (GBR) FOR A DESCRIPTION OF THE ANTICIPATED SUBSURFACE CONDITIONS ALONG THE INTERCEPTOR SEWER ALIGNMENT.
- CONTRACTOR TO RESTORE SITE TO PRE-CONSTRUCTION CONDITION FOLLOWING COMPLETION OF CONSTRUCTION.
- PIPE TO BE REINFORCED CONCRETE JACKING PIPES LINED WITH HDPE (MIN. 4mm THICK HDPE LINER) DESIGNED BY CONTRACTOR TO ASCE 27-17 DIRECT DESIGN. REFERENCE DRAWING 13446.
- CONTRACTOR IS RESPONSIBLE FOR THE CONTROL, DIVERSION, STORAGE, AND PUMPING OF ALL WATER INCLUDING WITHOUT LIMITATION RAIN, SNOWMELT, GROUNDWATER, AND/OR LEAKING INFRASTRUCTURE THROUGHOUT ALL STAGES OF THE WORK. REFERENCE D19 IN THE CONTRACT DOCUMENTS.
- CONTRACTOR IS RESPONSIBLE TO DEVELOP SUITABLE SITE ACCESS AS REQUIRED TO FACILITATE THE WORK, INCLUDING BUT NOT LIMITED TO CONSTRUCTION OF TEMPORARY RAMPING/ACCESS ROADS, EXCAVATION AND REGRADING TO DEVELOP FLAT WORKING SURFACES AROUND SHAFTS AND WITHIN LAYDOWN AREAS AS REQUIRED, AND INSTALLATION OF TEMPORARY FENCING AND SIGNAGE.
- THE AERIAL IMAGERY SHOWN ON THE DRAWINGS ARE BASED ON 2021 IMAGERY. CONTRACTOR IS RESPONSIBLE TO MAKE OR OBTAIN THEIR OWN INVESTIGATIONS TO VERIFY THE PHYSICAL CONDITIONS OF THE SITE. REFERENCE B3 IN THE CONTRACT DOCUMENTS.



**ENGINEERS
GEOSCIENTISTS
MANITOBA**

Certificate of Authorization
Associated Engineering (Sask) Ltd.
No. 396 Date: 04/19/2024

**ENGINEERS
GEOSCIENTISTS
MANITOBA**

Certificate of Authorization
KGS Group
No. 245

FOR INDEX SEE
C-3-102

PROPERTY LIMITS DELINEATION
DELINEATION OF PROPERTY LIMITS AS SHOWN ON THIS DWG DOES NOT REPRESENT A "LEGAL SURVEY". KGS GROUP AND ASSOCIATED ENGINEERING MAKES NO REPRESENTATION OR WARRANTY AS TO THE ACCURACY OF PROPERTY LIMITS DELINEATED ON THIS DWG, NOR ON THE DIMENSIONAL ACCURACY OF DWG FEATURES RELATIVE TO THOSE PROPERTY LIMITS.

WARNING
IF POWER EQUIPMENT OR EXPLOSIVES ARE TO BE USED FOR EXCAVATION ON THIS PROJECT THE CONTRACTOR MUST:
1) NOTIFY THE GAS COMPANY OF THE PROPOSED LOCATION OF EXCAVATION.
2) TAKE PRECAUTION TO AVOID DAMAGE TO GAS COMPANY INSTALLATIONS.
SEE PROVINCIAL REGULATION 210/72 FOR DETAILS

LOCATION APPROVED UNDERGROUND STRUCTURES
SHPV, U/G STRUCTURES COMMITTEE DATE
NOTE:
LOCATION OF UNDERGROUND STRUCTURES AS SHOWN ARE BASED ON THE BEST INFORMATION AVAILABLE BUT NO GUARANTEE IS GIVEN THAT ALL EXISTING UTILITIES ARE SHOWN OR THAT THE GIVEN LOCATIONS ARE EXACT. CONFIRMATION OF EXISTENCE AND EXACT LOCATION OF ALL SERVICES MUST BE OBTAINED FROM THE INDIVIDUAL UTILITIES BEFORE PROCEEDING WITH CONSTRUCTION.

VERTICAL DATUM: CGVD28 (HT2.0 Geoid)	
HORIZONTAL DATUM: NAD83 (June 1990), Zone 14	
NO.	REVISIONS
0	ISSUED FOR TENDER
DATE	2024/04/19
DATE	2024 04 19

KGS GROUP

DESIGNED BY: CON	CHECKED BY: JL
DRAWN BY: GLG	APPROVED BY: RBO
SCALE: AS NOTED	RELEASED FOR CONSTRUCTION
DATE: 2024 04 19	DATE:

ENGINEER'S SEAL TUNNELLING WORKS
ENGINEER'S SEAL CIVIL WORKS

2024-Apr-19

CONSULTANT DRAWING NUMBER: C-3-107

THE CITY OF WINNIPEG
WATER AND WASTE DEPARTMENT
ENGINEERING SERVICES DIVISION

CENTREPORT SOUTH REGIONAL WATER AND WASTEWATER
SERVICING - PHASE 1A (CONTRACT 3)
STURGEON ACCESS
STA 0+990 TO STA 1+270

SHEET 7 OF 9
CITY DRAWING NUMBER: 13445