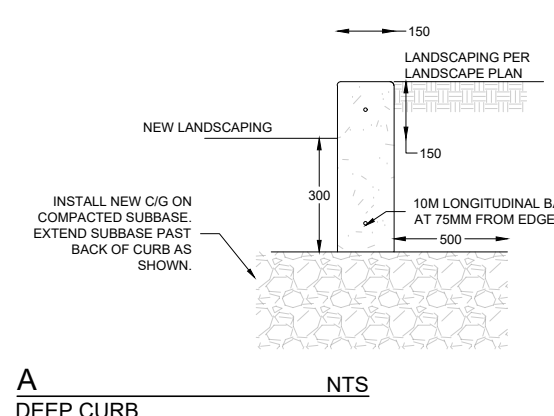


PLAN GRADING 1:150

STELLA WALK

KING STREET



Catchment	Area Takeoff - Pre Development			
	m2	acre	C	% Area
C1: Asphalt & Concrete	850	0.21	0.50	56.6%
C1: Roof	7	0.00	0.95	0.5%
C1: Gravel	57	0.01	0.50	3.8%
C1: Landscaping	587	0.15	0.15	39.1%
<b>Summary</b>			<b>Weighted C</b>	<b>Overall C</b>
Catchment 1	1,501	0.37	0.59	100.0%
<b>Subtotal</b>	<b>1,501</b>	<b>0.4</b>	<b>100.0%</b>	<b>0.59</b>

Catchment	Area Takeoff - Post Development			
	m2	acre	C	% Area
C1: Asphalt & Concrete	791	0.20	0.90	52.7%
C1: Roof	13	0.00	0.95	0.9%
C1: Gravel	0	0.00	0.50	0.0%
C1: Landscaping	697	0.17	0.15	46.4%
<b>Summary</b>			<b>Weighted C</b>	<b>Overall C</b>
Catchment 1	1,501	0.37	0.55	100.0%
<b>Subtotal</b>	<b>1,501</b>	<b>0.4</b>	<b>100.0%</b>	<b>0.55</b>

**TOPOGRAPHIC SURVEY & BENCHMARK**  
 Survey by Stevens Surveys, File 22/220, 21<sup>st</sup> of September 2022.  
 Elevations are geoidic (CGVD28), obtained by GPS Observation.  
 TBM #1, EL=233.10, is top of the nut of fire hydrant ±5.5m south of the southwest corner of Turtle Island Neighbourhood Centre.  
 TBM #2, EL = 232.86, is top of operating nut of fire hydrant on south side of Stella Walk ±60m west of King Street.  
 TBM #3, EL=232.78, is top of operating nut of fire hydrant on east side of King Street ±65m north of Stella Walk.  
 See surveyor plan for details.

**Construction Specifications**

- Construction must conform to the City of Winnipeg, *Standard Construction Specifications* and all references contained herein refer to these specifications. "SD" refers to City of Winnipeg standard details.
- All materials used for construction must conform to City of Winnipeg, *Approved Products for Underground Use Within the City of Winnipeg* except as indicated otherwise.
- Water Service to CW-2110**
  - All water services to be saddle connection installed according to CW2110, SD-012.
  - Copper water service shall be in accordance with AWWA C800 and ASTM B88M, Type K, seamless water tubing.
  - Use Class 'B' Bedding where required according to SD-001.
  - For backfilling, refer to SD-002 as follows:
    - Class '5' Backfill in landscaped & untraveled areas
    - Class '2' Backfill in gravel, hard-surfaced & traveled areas
- Gravity Sewers to CW-2030**
  - All WWS service installation shall be in accordance with CW 2030/2130, SD-014
  - 150mm WWS service pipe shall be in accordance with CAN/CSA B162.2 and ASTM D3034, SDR-35.
  - All pipe installations through road right of way shall be completed with trenchless methods. Any open trench construction on site shall be as follows:
    - Class 'B' Bedding to SD-001

- Backfill to SD-002: Class '2' in gravel, hard-surfaces, and traveled areas; Class '5' in landscaped and untraveled areas.
- To CW2030/2130, Detail SD-014

**Wastewater Flow Generation:**

- Spray equipment is design-build by other. Spray features to be sequenced to provide max flow rate of 40-60 US GPM.

**General Notes**

- Contractor to obtain all necessary permits.
- Contractor to obtain clearances from all utilities before excavating. Confirm all existing infrastructure information in field before construction. Notify the Engineer immediately of any discrepancies that affect installation or design.
- Confirm all dimensions before beginning construction.
- Consult Geotechnical Report (if available) or geotechnical engineer to confirm the suitability of native soils for backfill.
- Grading by Landscape Architect.
- Existing topographic by Landscape Architect. Refer to Landscape Architect for topographic information.
- This is a combined sewer district.

This is not a legal plan.  
 Contours shown are approximated for reference only.  
 Whole numbers are millimetres (mm).  
 Decimal numbers are metres (m).  
 Convert Metric to Standard 1.0m = 3.2808ft  
 This plan is prepared only for the Client and may not be used by any other party without written consent.

EXISTING	PROPOSED	EXISTING	PROPOSED	EXISTING	PROPOSED
1.98	SLOPE DIRECTION	2.98%	HYDRANT	CONTOUR	
(394.98)	SURFACE ELEV.	(239.45)	CURB STOP	PONDING AREA	
150 WM	WATERMAIN	150 WM	VALVE	ELEC	ELEC
250 WWS	WASTEWATER SEWER	250 WWS	WWS MANHOLE	GAS	GAS
300 LDS	LAND DRAINAGE SEWER	300 LDS	LDS CATCHBASIN	COMM	COMMUNICATIONS
			LDS MANHOLE		TOPO SURVEY POINT

APPROVING AUTHORITY STAMP

B.M. ELEV.

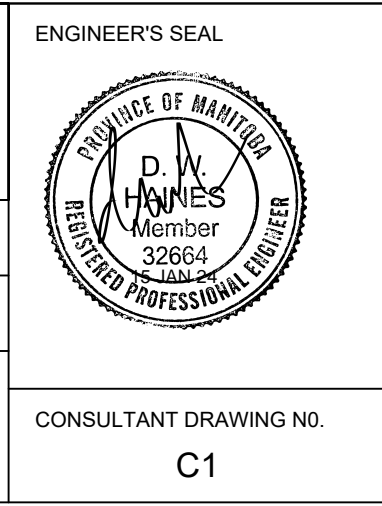
NO.	REVISIONS	DATE	BY
3	SUBMITTED FOR TENDER	2024-01-16	KP
2	99% COORDINATION	2023-12-07	KP
1	SUBMITTED FOR REVIEW	2023-11-21	DH
		YYYY.MM.DD.	

**Sandbox**  
DESIGN & CONSULTING

DESIGNED BY: KP  
 CHECKED BY: DH  
 DRAWN BY: KP  
 APPROVED BY: DH

HOR. SCALE: AS SHOWN  
 VERTICAL: AS SHOWN

RELEASED FOR CONSTRUCTION: [ ]  
 DATE: 2024-01-16  
 DATE: [ ]



**CITY OF WINNIPEG**

LOT GRADING PLAN  
**TURTLE ISLAND SPRAY PAD**  
 510 KING STREET, WINNIPEG, MB

SHEET OF 1 2  
 CAD FILE DRAWING NUMBER: 23074-C-R3  
 PROJECT CODE: 23074

CONSULTANT DRAWING NO. C1