

# Appendix A

## Preliminary Design Drawings

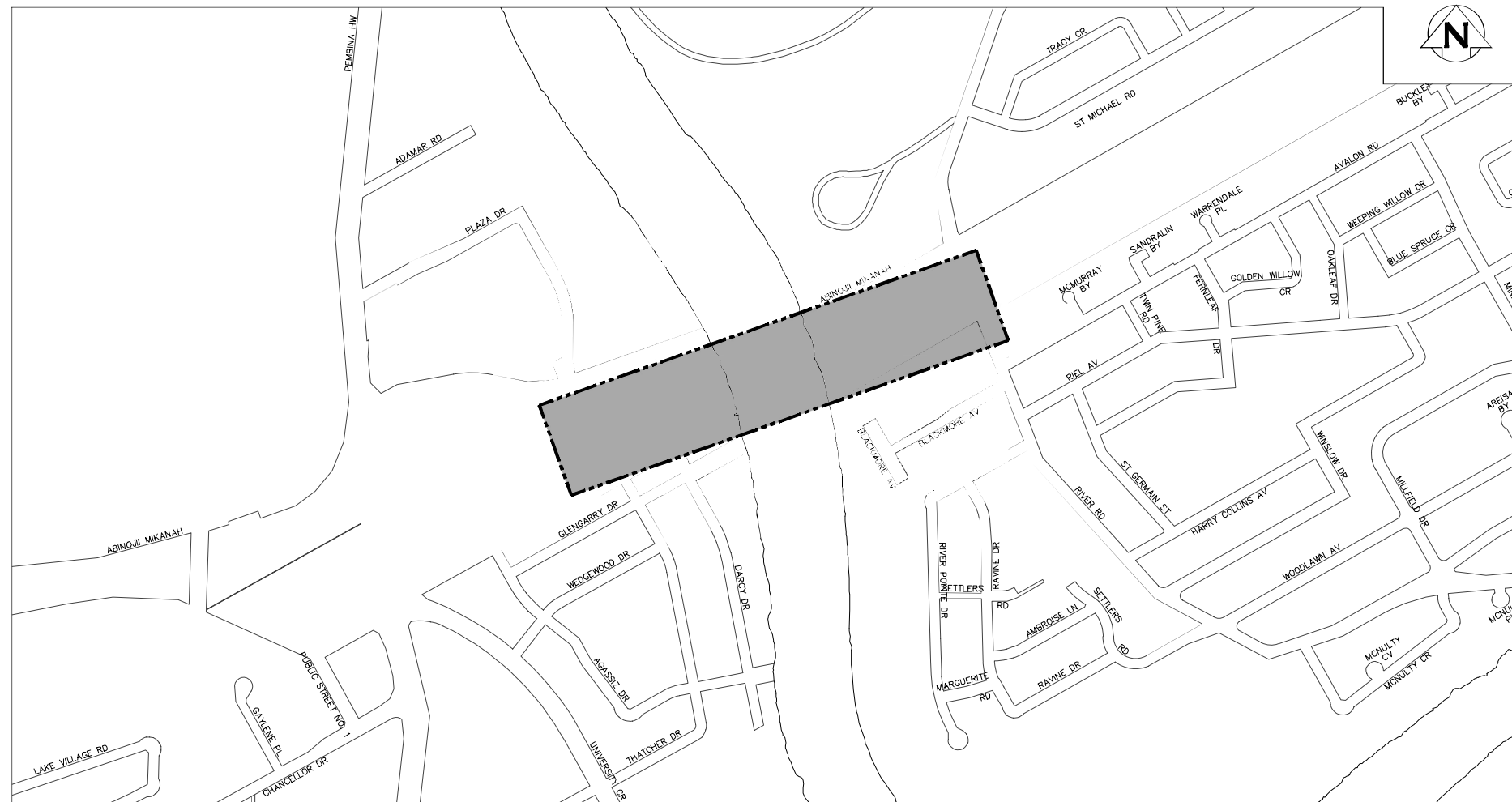


# THE CITY OF WINNIPEG

WATER AND WASTE DEPARTMENT  
ENGINEERING DIVISION

## REPLACEMENT OF THE FORT GARY ST VITAL SIPHON

TENDER 1010-2024A



**KEY MAP**

**FOR INDEX SEE  
G-1001**

SHEET 1 OF 16

CITY DRAWING NUMBER

G-1000

**DRAWING INDEX**

SHEET NUMBER	CITY OF WINNIPEG DRAWING NUMBER	DRAWING TITLE
1	G-1000	COVER
2	G-1001	DRAWING INDEX, DESIGN NOTES, LEGEND, & ABBREVIATIONS
3	C-1001	GENERAL PLAN - CONSTRUCTION & STAGING
4	C-1002	SITE PLAN - WEST BANK
5	C-1003	SITE PLAN - EAST BANK
6	C-1004	PLAN / PROFILE - D'ARCY PUMPING STATION TO MATCHLINE 1+250
7	C-1005	PLAN / PROFILE - MATCHLINE 1+250 TO 1350 INTERCEPTOR
8	C-1006	PLAN / PROFILE - EXISTING DISCHARGE MANHOLE TO PROPOSED UPSTREAM SIPHON CHAMBER
9	C-1007	PLAN / PROFILE - PROPOSED DOWNSTREAM SIPHON CHAMBER TO 1350 INTERCEPTOR
10	C-1008	PLAN / PROFILE - EXISTING DISCHARGE MANHOLE TO SIPHON INLET & OVERFLOW CHAMBERS
11	S-1001	DISCHARGE MANHOLE - SECTIONS & DETAILS
12	S-1002	SIPHON INLET & OVERFLOW CHAMBERS - SECTIONS & DETAILS
13	S-1003	PROPOSED UPSTREAM SIPHON CHAMBER - SECTIONS & DETAILS
14	S-1004	PROPOSED DOWNSTREAM SIPHON CHAMBER - SECTIONS & DETAILS
15	C-4001	DETAILS

**HATCH PATTERNS**

EXISTING	PROPOSED	DESCRIPTION
		EARTH OR GROUND ABOVE PIPE
		SAND OR OTHER FINE MATERIAL
		CONCRETE
		WASHED STONE OR GRANULAR MATERIAL
		INTERLOCKING STONE
		METAL
		GRAVEL OR STONE

**ABBREVIATIONS**

WWS	WASTE WATER SEWER
CS	COMBINED SEWER
LDS	LAND DRAINAGE SEWER
℄	PROPERTY LINE
℄	CENTER LINE
G.I.S.	GEOGRAPHIC INFORMATION SYSTEM
B.M.	BENCH MARK
TH	TEST HOLE
ELEV	ELEVATION
INV	INVERT
MIN	MINIMUM
MAX	MAXIMUM
SL	STREET LIGHTING
TS	TRAFFIC SIGNALS
ABAND	ABANDONED
BLDG	BUILDING
HSE	HOUSE
CRN	CORNER
OPP	OPPOSITE
C/S OR S/C	CURB STOP
MTS	MANITOBA TELEPHONE SYSTEM
R.O.W.	RIGHT-OF-WAY
WM	WATERMAN
CULV	CULVERT
MH	MANHOLE
CB	CATCH BASIN
CI	CURB INLET
VERT.	VERTICAL
HORZ.	HORIZONTAL
I.B.	IRON BAR
FIBRE	FIBRE OPTIC
TYP	TYPICAL
X-ING	CROSSING
HYD	HYDRANT
EXIST	EXISTING
N	NORTH
E	EAST
S	SOUTH
W	WEST
W/	WITH
C/W	CONSTRUCTED WITH
CONC	CONCRETE
AC	ASBESTOS CEMENT
VC OR CLAY	VITRIFIED CLAY
GI	CAST IRON
DI	DUCTILE IRON
PVC	POLYVINYL CHLORIDE
HDPE	HIGH DENSITY POLYETHYLENE
PCCP	PRESTRESSED CONCRETE CYLINDER PIPE
FRMP	FIBRE REINFORCED POLYMER MORTAR PIPE

**LEGEND**

DESCRIPTION	PLAN VIEW	
	EXISTING	PROPOSED
WATER PIPE		
FIRE HYDRANT		
VALVE		
CURB STOP		
REDUCER		
COUPLING OR SLIDER		
CROSS		
BEND - 11.25', 22.5', 45', 90'		
TEE		
VERTICAL BEND		
ANODE		
REPAIR MARKER		
PLUG		
SEWER PIPE		
MANHOLE		
CATCH BASIN		
CURB INLET		
JUNCTION		
℄ DITCH		
CULVERT		
SURVEY BAR		
SURVEY MONUMENT		
TREE - DECIDUOUS		
TREE - CONIFEROUS		
HYDRO		
HYDRO POLE		
LAMP STANDARD		
HYDRO POLE W/STREET LIGHTING		
POLE		
GUY ANCHOR		
M.T.S. POLE		
PEDESTAL OR BOX		
CABINET		
M.T.S., SHAW, OR VIDEON		
TRAFFIC SIGNALS		
TRAFFIC LIGHT STANDARD		
GAS		
STEAM		
FIBRE OPTIC		
FENCE		
EDGE OF PAVEMENT OR GUTTER		
EDGE UNPAVED OR GRAVEL ROAD		
℄		
PROJECTED ℄		
LOT LINE		
SIDEWALK - PATHWAY		
EASEMENT		
EDGE OF BUILDING		
MAILBOX		
PARKING METER		
TEST HOLE		
TREE LINE OR BUSH		

DESCRIPTION	PROFILE	
	EXISTING	PROPOSED
WATER PIPE		
HYDRANT TOP		
VALVE		
TEE OR CROSS		
COUPLING OR BEND		
REDUCER		
END OF PIPE		
SEWER PIPE		
UNPAVED GROUND SURFACE		
PAVED GROUND SURFACE - ℄ PIPE		
GUTTER (NORTH AND WEST)		
GUTTER (SOUTH AND EAST)		
℄ DITCH (NORTH AND WEST)		
℄ DITCH (SOUTH AND EAST)		
STRUCTURE		
MANHOLE OR CATCH BASIN		

LOCATION APPROVED UNDERGROUND STRUCTURES	
SUPV. U/G STRUCTURES COMMITTEE	DATE
NOTE: LOCATION OF UNDERGROUND STRUCTURES AS SHOWN ARE BASED ON THE BEST INFORMATION AVAILABLE BUT NO GUARANTEE IS GIVEN THAT ALL EXISTING UTILITIES ARE SHOWN OR THAT THE GIVEN LOCATIONS ARE EXACT. CONFIRMATION OF EXISTENCE AND EXACT LOCATION OF ALL UTILITIES MUST BE OBTAINED FROM THE INDIVIDUAL UTILITIES BEFORE PROCEEDING WITH CONSTRUCTION.	

B.M. xxxxxx	ELEV. xxx,xxxm		
CONSTRUCTION COMPLETION DATE: YYYY MM DD			
NO.	REVISIONS	DATE	BY
B	ISSUED FOR RFQ	24/11/18	ADL
A	ISSUED FOR PRELIMINARY REVIEW	24/09/13	ADL

<b>AECOM</b>	
DESIGNED BY	MPG
CHECKED BY	
DRAWN BY	ADL
APPROVED BY	
SCALE:	
HORIZONTAL	--
VERTICAL	--
RELEASED FOR CONSTRUCTION	
DATE	2024 11 18
DATE	

ENGINEER'S SEAL
CONSULTANT DRAWING NUMBER
G-1001

**THE CITY OF WINNIPEG**  
 WATER AND WASTE DEPARTMENT  
 ENGINEERING DIVISION

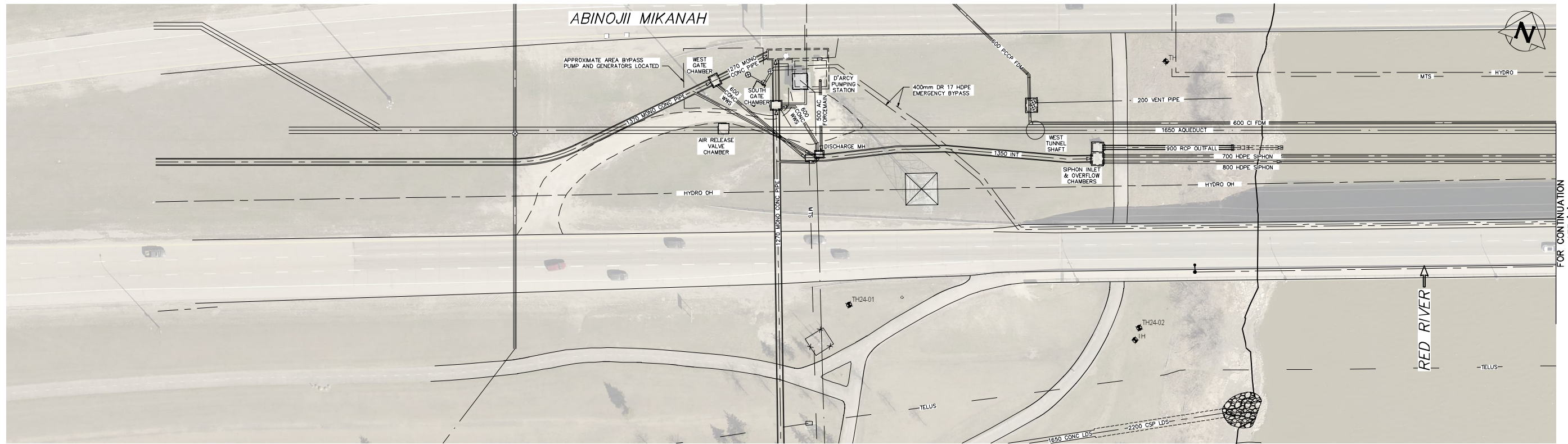
REPLACEMENT OF THE  
 FORT GARY ST VITAL SIPHON  
 INDEX PAGE

SHEET 2 OF 15  
 CITY DRAWING NUMBER  
 G-1001

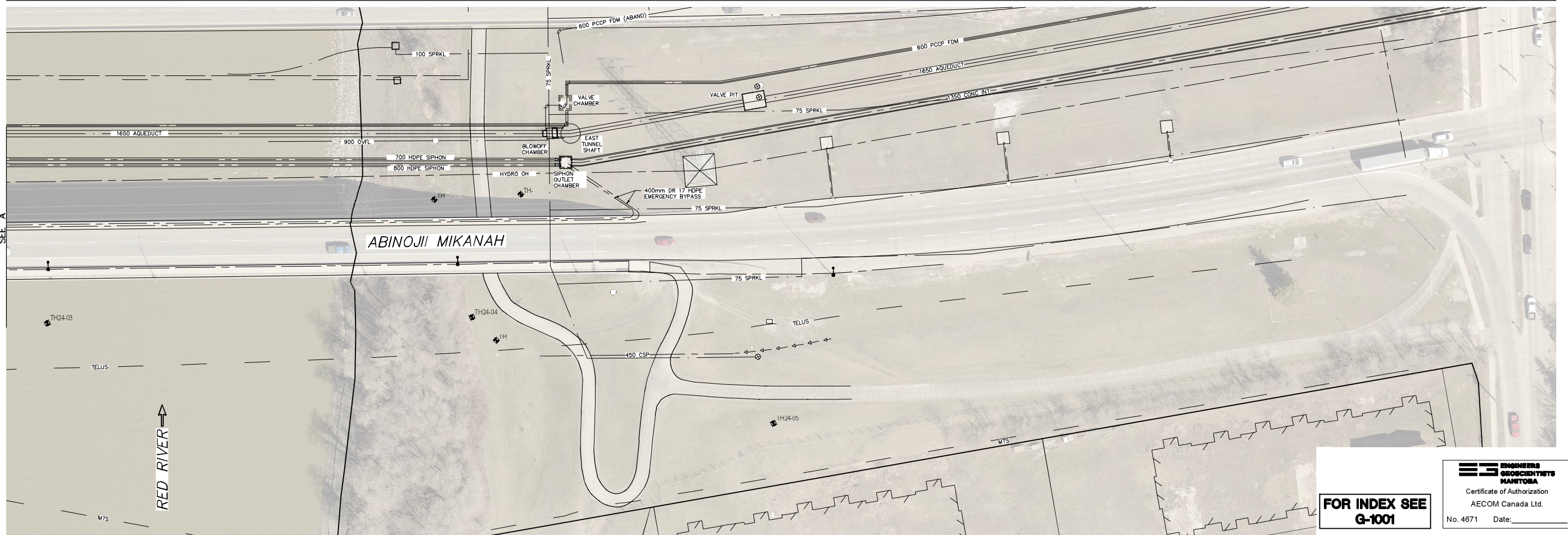
**ENGINEERS**  
**GEOSCIENTISTS**  
**MANITOBA**

Certificate of Authorization  
 AECOM Canada Ltd.  
 No. 4671 Date: \_\_\_\_\_

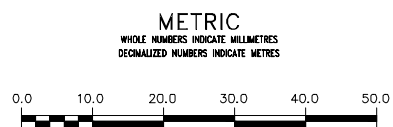
**FOR INDEX SEE**  
**G-1001**



FOR CONTINUATION SEE 'A'



FOR CONTINUATION SEE 'A'



LOCATION APPROVED UNDERGROUND STRUCTURES	
SUPV. U/G STRUCTURES COMMITTEE	DATE
NOTE: LOCATION OF UNDERGROUND STRUCTURES AS SHOWN ARE BASED ON THE BEST INFORMATION AVAILABLE BUT NO GUARANTEE IS GIVEN THAT ALL EXISTING UTILITIES ARE SHOWN OR THAT THE GIVEN LOCATIONS ARE EXACT. CONFIRMATION OF EXISTENCE AND EXACT LOCATION OF ALL SERVICES MUST BE OBTAINED FROM THE INDIVIDUAL UTILITIES BEFORE PROCEEDING WITH CONSTRUCTION.	

B.M. xxxxxx ELEV. xxx,xxxm	CONSTRUCTION COMPLETION DATE: YYYY MM DD		
B	ISSUED FOR RFQ	24/11/18	ADL
A	ISSUED FOR PRELIMINARY REVIEW	24/09/13	ADL
NO.	REVISIONS	DATE	BY

<b>AECOM</b>	
DESIGNED BY MPG	CHECKED BY
DRAWN BY ADL	APPROVED BY
SCALE: HORIZONTAL 1:500 VERTICAL -	RELEASED FOR CONSTRUCTION
DATE 2024 11 18	DATE

ENGINEER'S SEAL
CONSULTANT DRAWING NUMBER C-1001

**THE CITY OF WINNIPEG**  
WATER AND WASTE DEPARTMENT  
ENGINEERING DIVISION

REPLACEMENT OF THE  
FORT GARY ST VITAL SIPHON

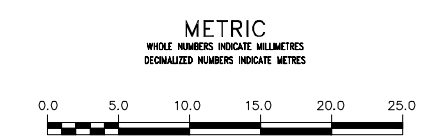
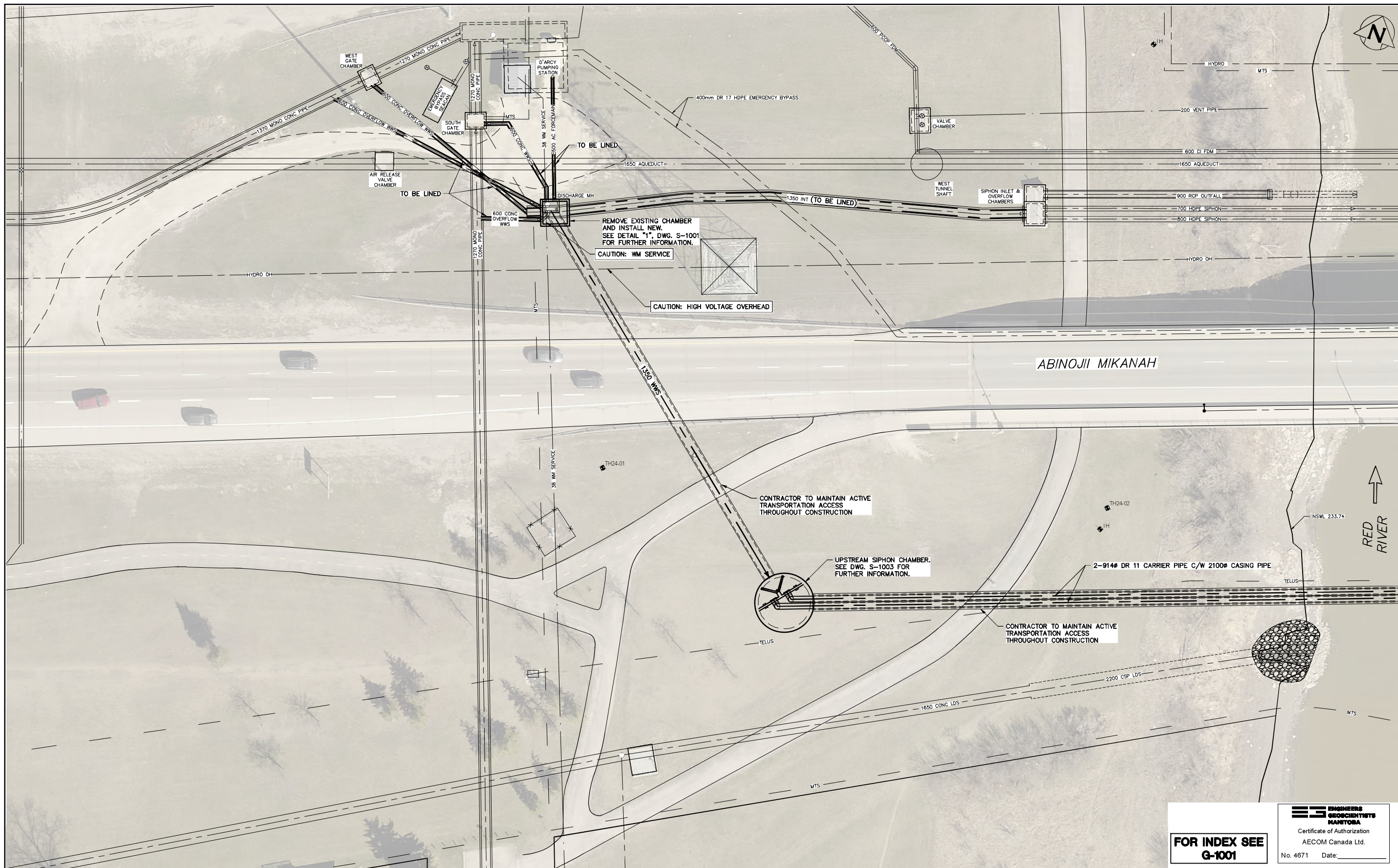
**GENERAL PLAN  
CONSTRUCTION & STAGING**

SHEET **3** OF 15  
CITY DRAWING NUMBER  
**C-1001**

FOR INDEX SEE  
**Q-1001**

**ENGINEERS  
GEOLOGISTS  
MANITOBA**  
Certificate of Authorization  
AECOM Canada Ltd.  
No. 4671 Date: \_\_\_\_\_





LOCATION APPROVED  
UNDERGROUND STRUCTURES

SUPV. U/G STRUCTURES COMMITTEE DATE

NOTE:  
LOCATION OF UNDERGROUND STRUCTURES AS SHOWN ARE BASED ON THE BEST INFORMATION AVAILABLE BUT NO GUARANTEE IS GIVEN THAT ALL EXISTING UTILITIES ARE SHOWN OR THAT THE GIVEN LOCATIONS ARE EXACT. CONFIRMATION OF EXISTENCE AND EXACT LOCATION OF ALL SERVICES MUST BE OBTAINED FROM THE INDIVIDUAL UTILITIES BEFORE PROCEEDING WITH CONSTRUCTION.

B.M. xxxxxx ELEV. xxx,xxxm	CONSTRUCTION COMPLETION DATE: YYYY MM DD		
B	ISSUED FOR RFQ	24/11/18	ADL
A	ISSUED FOR PRELIMINARY REVIEW	24/09/13	ADL
NO.	REVISIONS	DATE	BY

**AECOM**

DESIGNED BY: MPG  
DRAWN BY: ADL  
SCALE: HORIZONTAL 1:250  
VERTICAL -

CHECKED BY:  
APPROVED BY:  
RELEASED FOR CONSTRUCTION

DATE: 2024 11 18

ENGINEER'S SEAL

CONSULTANT DRAWING NUMBER  
C-1002

**THE CITY OF WINNIPEG**  
WATER AND WASTE DEPARTMENT  
ENGINEERING DIVISION

REPLACEMENT OF THE  
FORT GARY ST VITAL SIPHON

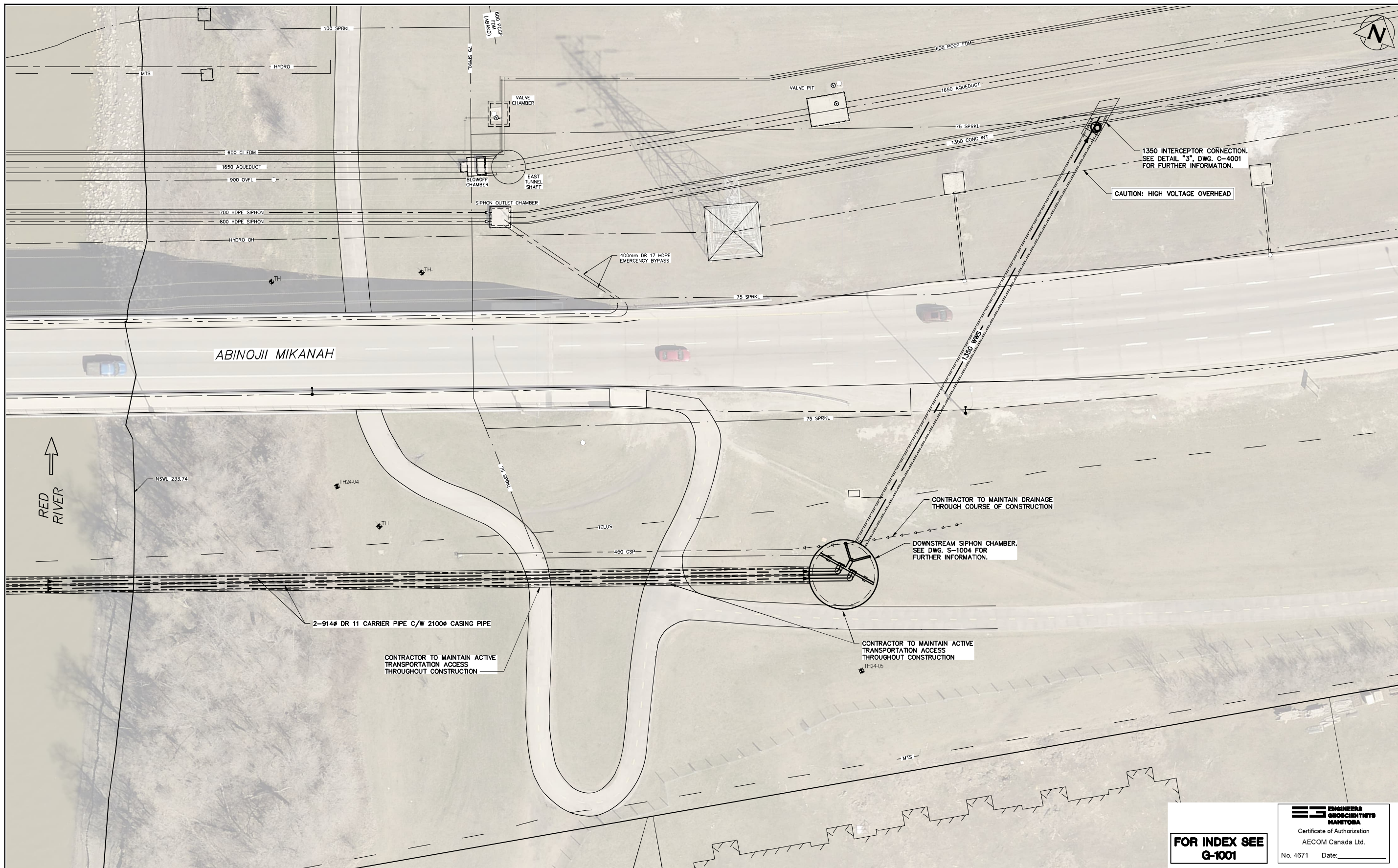
**SITE PLAN  
WEST BANK**

SHEET 4 OF 15  
CITY DRAWING NUMBER  
C-1002

FOR INDEX SEE  
G-1001

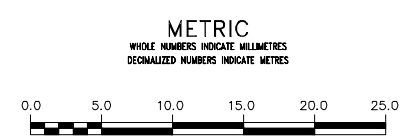
**ENGINEERS  
GEOSCIENTISTS  
MANITOBA**  
Certificate of Authorization  
AECOM Canada Ltd.  
No. 4671 Date: \_\_\_\_\_





**FOR INDEX SEE  
G-1001**

**ENGINEERS  
GEOSCIENTISTS  
MANITOBA**  
Certificate of Authorization  
AECOM Canada Ltd.  
No. 4671 Date: \_\_\_\_\_



**LOCATION APPROVED  
UNDERGROUND STRUCTURES**

SUPV. U/G STRUCTURES COMMITTEE DATE

NOTE:  
LOCATION OF UNDERGROUND STRUCTURES AS SHOWN ARE BASED ON THE BEST INFORMATION AVAILABLE BUT NO GUARANTEE IS GIVEN THAT ALL EXISTING UTILITIES ARE SHOWN OR THAT THE GIVEN LOCATIONS ARE EXACT. CONFIRMATION OF EXISTENCE AND EXACT LOCATION OF ALL SERVICES MUST BE OBTAINED FROM THE INDIVIDUAL UTILITIES BEFORE PROCEEDING WITH CONSTRUCTION.

B.M. xxxxxx  
ELEV. xxx.xxxm

CONSTRUCTION COMPLETION DATE: YYYY MM DD

NO.	REVISIONS	DATE	BY
B	ISSUED FOR RFQ	24/11/18	ADL
A	ISSUED FOR PRELIMINARY REVIEW	24/09/13	ADL

**AECOM**

DESIGNED BY: MPG  
DRAWN BY: ADL  
SCALE: HORIZONTAL 1:250  
VERTICAL -

CHECKED BY:  
APPROVED BY:  
RELEASED FOR CONSTRUCTION

DATE: 2024 11 18

ENGINEER'S SEAL

CONSULTANT DRAWING NUMBER  
C-1003

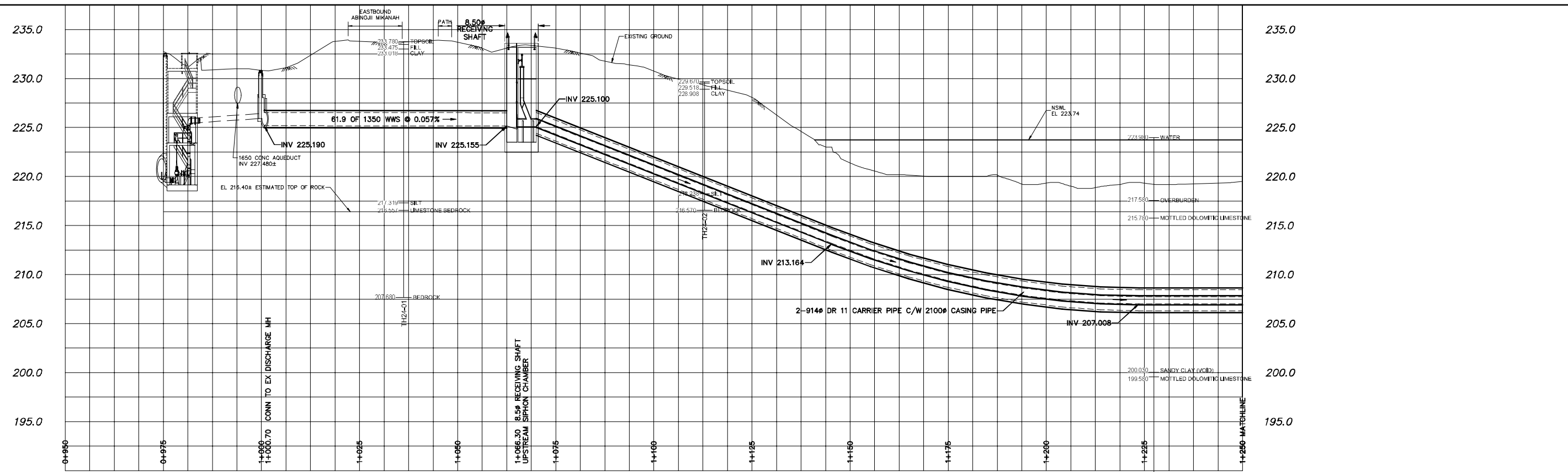
**THE CITY OF WINNIPEG**  
WATER AND WASTE DEPARTMENT  
ENGINEERING DIVISION

REPLACEMENT OF THE  
FORT GARY ST VITAL SIPHON

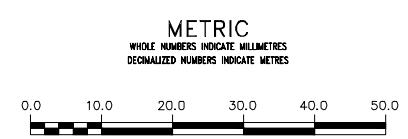
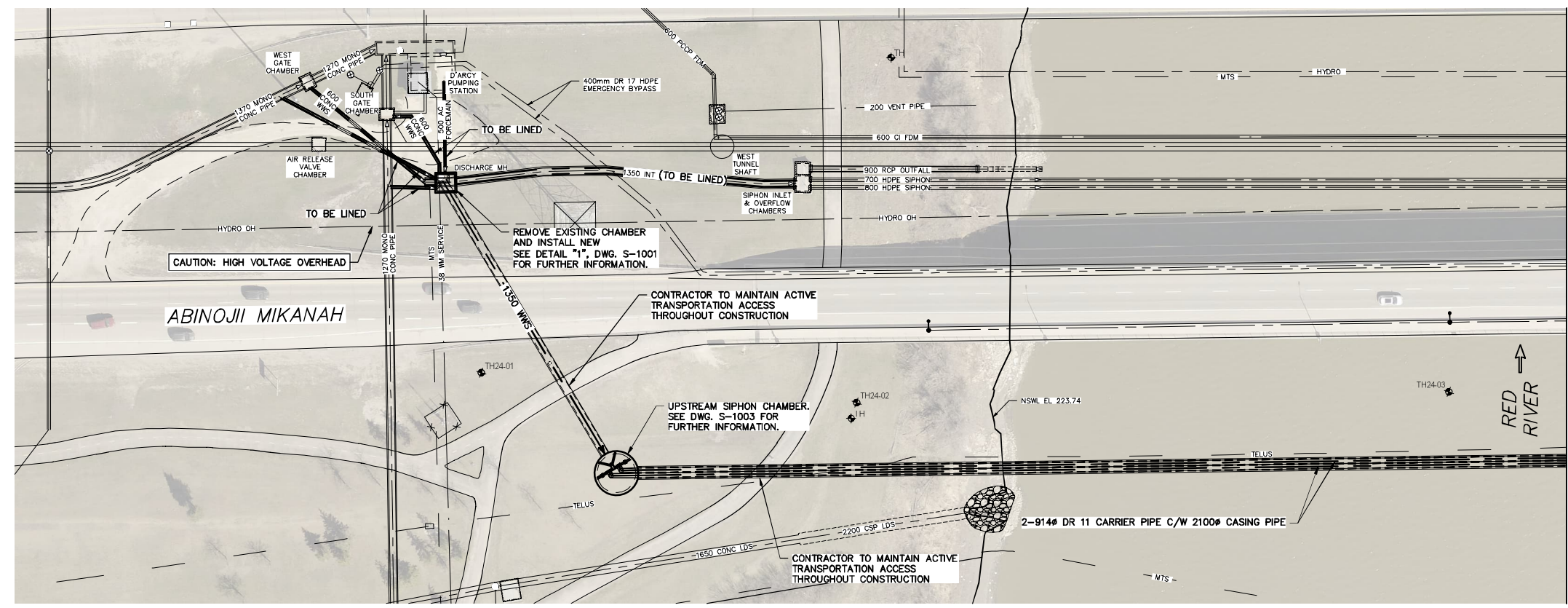
**SITE PLAN  
EAST BANK**

SHEET 5 OF 15  
CITY DRAWING NUMBER  
C-1003





NOTE: CHAINAGES SHOWN ARE ALONG  $\phi$  OF NEW PIPE.  
STA. 1+000.000 =  $\phi$  OF DISCHARGE MH



LOCATION APPROVED UNDERGROUND STRUCTURES		B.M. xxxxxx ELEV. xxx.xxxm	
SUPV. U/G STRUCTURES COMMITTEE		CONSTRUCTION COMPLETION DATE: YYYY MM DD	
DATE			
NOTE: LOCATION OF UNDERGROUND STRUCTURES AS SHOWN ARE BASED ON THE BEST INFORMATION AVAILABLE BUT NO GUARANTEE IS GIVEN THAT ALL EXISTING UTILITIES ARE SHOWN OR THAT THE GIVEN LOCATIONS ARE EXACT. CONFIRMATION OF EXISTENCE AND EXACT LOCATION OF ALL SERVICES MUST BE OBTAINED FROM THE INDIVIDUAL UTILITIES BEFORE PROCEEDING WITH CONSTRUCTION.			
B	ISSUED FOR RFQ	24/11/18	ADL
A	ISSUED FOR PRELIMINARY REVIEW	24/09/13	ADL
NO.	REVISIONS	DATE	BY

<b>AECOM</b>		ENGINEER'S SEAL	
		CONSULTANT DRAWING NUMBER C-1004	
DESIGNED BY MPG	CHECKED BY	SCALE: HORIZONTAL 1:500 VERTICAL 1:200	RELEASED FOR CONSTRUCTION
DRAWN BY ADL	APPROVED BY	DATE	DATE
PLOT DATE: 2024 11 18		Tender No: 1010-2024A CONTRACT NUMBER:	

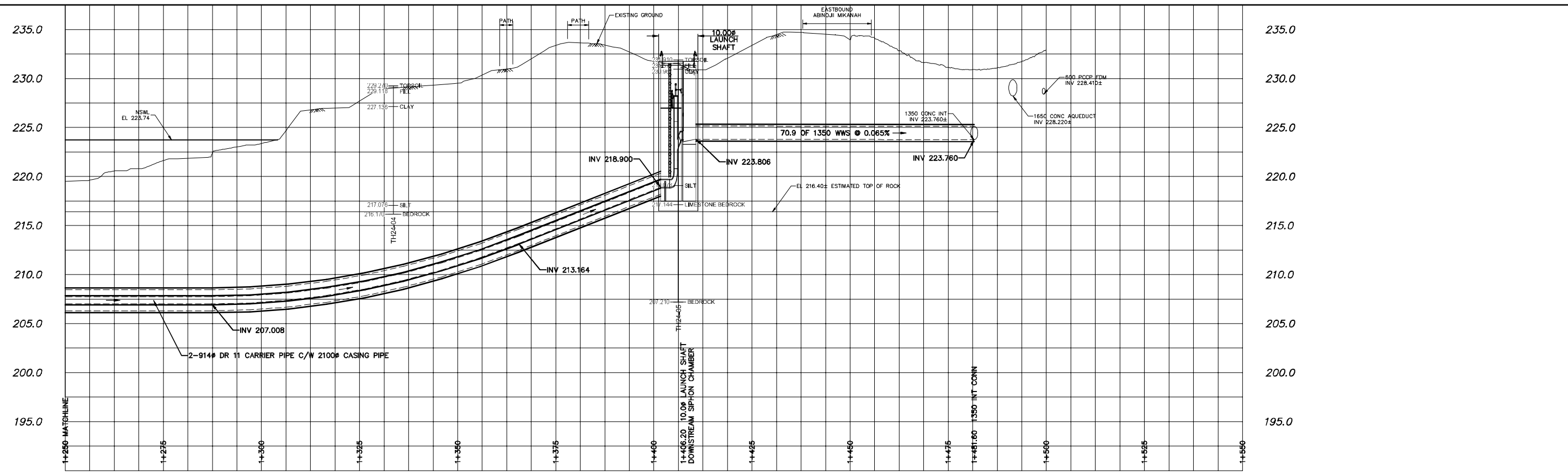
FOR INDEX SEE G-1001

**ENGINEERS GEOSCIENTISTS MANITOBA**  
Certificate of Authorization  
AECOM Canada Ltd.  
No. 4671 Date: \_\_\_\_\_

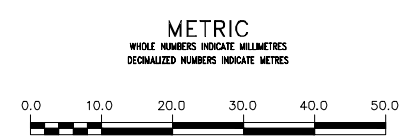
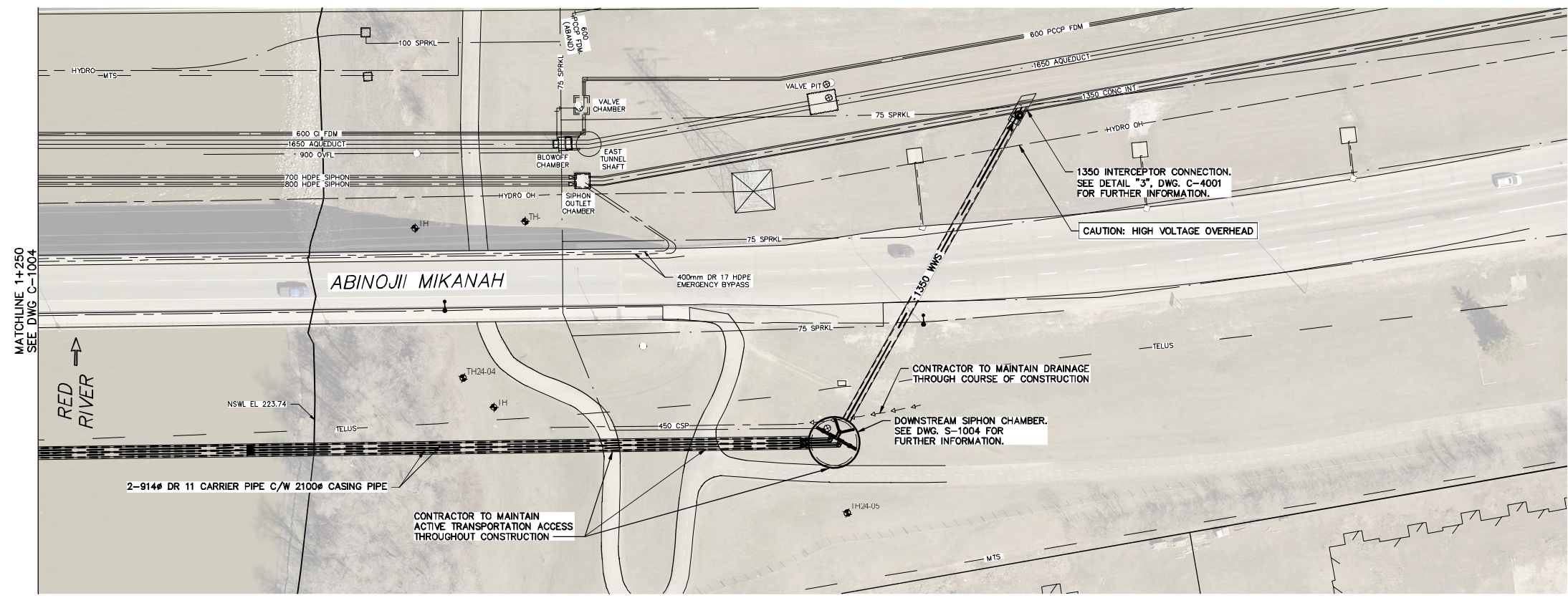
**THE CITY OF WINNIPEG**  
WATER AND WASTE DEPARTMENT  
ENGINEERING DIVISION

REPLACEMENT OF THE FORT GARY ST VITAL SIPHON  
PLAN / PROFILE  
D'ARCY PUMPING STATION  
TO MATCHLINE 1+250

SHEET 6 OF 15  
CITY DRAWING NUMBER  
C-1004



NOTE: CHAINAGES SHOWN ARE ALONG  $\phi$  OF NEW PIPE.  
STA. 1+000.000 =  $\phi$  OF DISCHARGE MH



LOCATION APPROVED UNDERGROUND STRUCTURES		CONSTRUCTION COMPLETION DATE: YYYY MM DD	
SUPV. U/G STRUCTURES COMMITTEE	DATE		
NOTE: LOCATION OF UNDERGROUND STRUCTURES AS SHOWN ARE BASED ON THE BEST INFORMATION AVAILABLE BUT NO GUARANTEE IS GIVEN THAT ALL EXISTING UTILITIES ARE SHOWN OR THAT THE GIVEN LOCATIONS ARE EXACT. CONFIRMATION OF EXISTENCE AND EXACT LOCATION OF ALL SERVICES MUST BE OBTAINED FROM THE INDIVIDUAL UTILITIES BEFORE PROCEEDING WITH CONSTRUCTION.			
B	ISSUED FOR RFQ	24/11/18	ADL
A	ISSUED FOR PRELIMINARY REVIEW	24/09/13	ADL
NO.	REVISIONS	DATE	BY

<b>AECOM</b>	
DESIGNED BY: MPG	CHECKED BY:
DRAWN BY: ADL	APPROVED BY:
SCALE: HORIZONTAL 1:500	RELEASED FOR CONSTRUCTION:
VERTICAL 1:200	DATE:
PLOT DATE: 2024 11 18	DATE: 2024 11 18

ENGINEER'S SEAL
CONSULTANT DRAWING NUMBER
C-1005

**THE CITY OF WINNIPEG**  
WATER AND WASTE DEPARTMENT  
ENGINEERING DIVISION

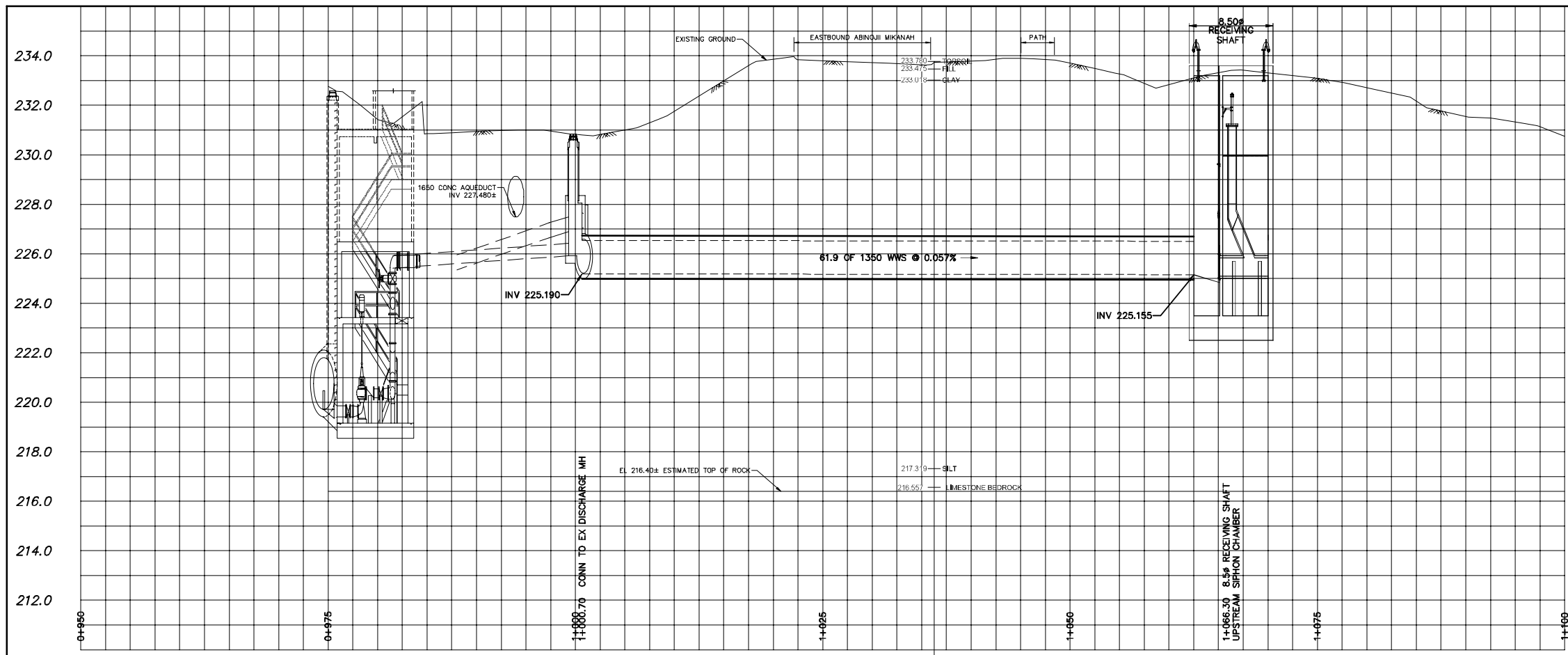
REPLACEMENT OF THE FORT GARY ST VITAL SIPHON  
PLAN / PROFILE  
MATCHLINE 1+250 TO 1350 INTERCEPTOR

SHEET 7 OF 15  
CITY DRAWING NUMBER  
C-1005

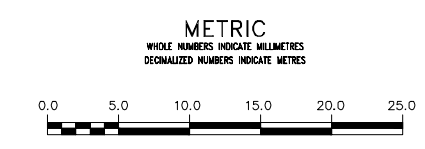
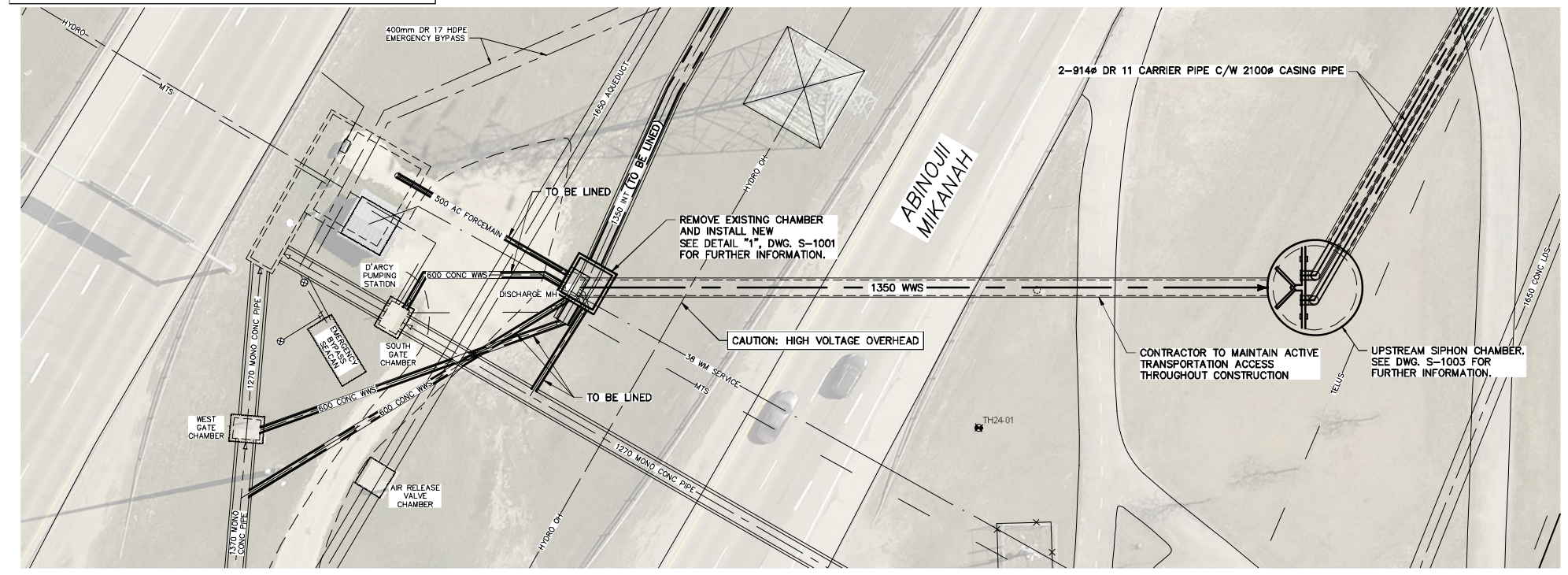
FOR INDEX SEE G-1001

**ENGINEERS GEOSCIENTISTS MANITOBA**  
Certificate of Authorization  
AECOM Canada Ltd.  
No. 4671 Date: \_\_\_\_\_





NOTE: CHAINAGES SHOWN ARE ALONG C OF NEW PIPE.  
STA. 1+000.000 = C OF DISCHARGE MH



LOCATION APPROVED  
UNDERGROUND STRUCTURES

SUPV. U/G STRUCTURES COMMITTEE DATE

NOTE:  
LOCATION OF UNDERGROUND STRUCTURES AS SHOWN ARE BASED ON THE BEST INFORMATION AVAILABLE BUT NO GUARANTEE IS GIVEN THAT ALL EXISTING UTILITIES ARE SHOWN OR THAT THE GIVEN LOCATIONS ARE EXACT. CONFIRMATION OF EXISTENCE AND EXACT LOCATION OF ALL SERVICES MUST BE OBTAINED FROM THE INDIVIDUAL UTILITIES BEFORE PROCEEDING WITH CONSTRUCTION.

B.M. xxxxxx ELEV. xxx,xxxm	CONSTRUCTION COMPLETION DATE: YYYY MM DD
B ISSUED FOR RFQ	24/11/18 ADL
A ISSUED FOR PRELIMINARY REVIEW	24/09/13 ADL
NO. REVISIONS	DATE BY

**AECOM**

DESIGNED BY: MPG  
DRAWN BY: ADL

CHECKED BY:  
APPROVED BY:

SCALE:  
HORIZONTAL 1:250  
VERTICAL 1:100

DATE: 2024 11 18

ENGINEER'S SEAL

CONSULTANT DRAWING NUMBER  
C-1006

**THE CITY OF WINNIPEG**  
WATER AND WASTE DEPARTMENT  
ENGINEERING DIVISION

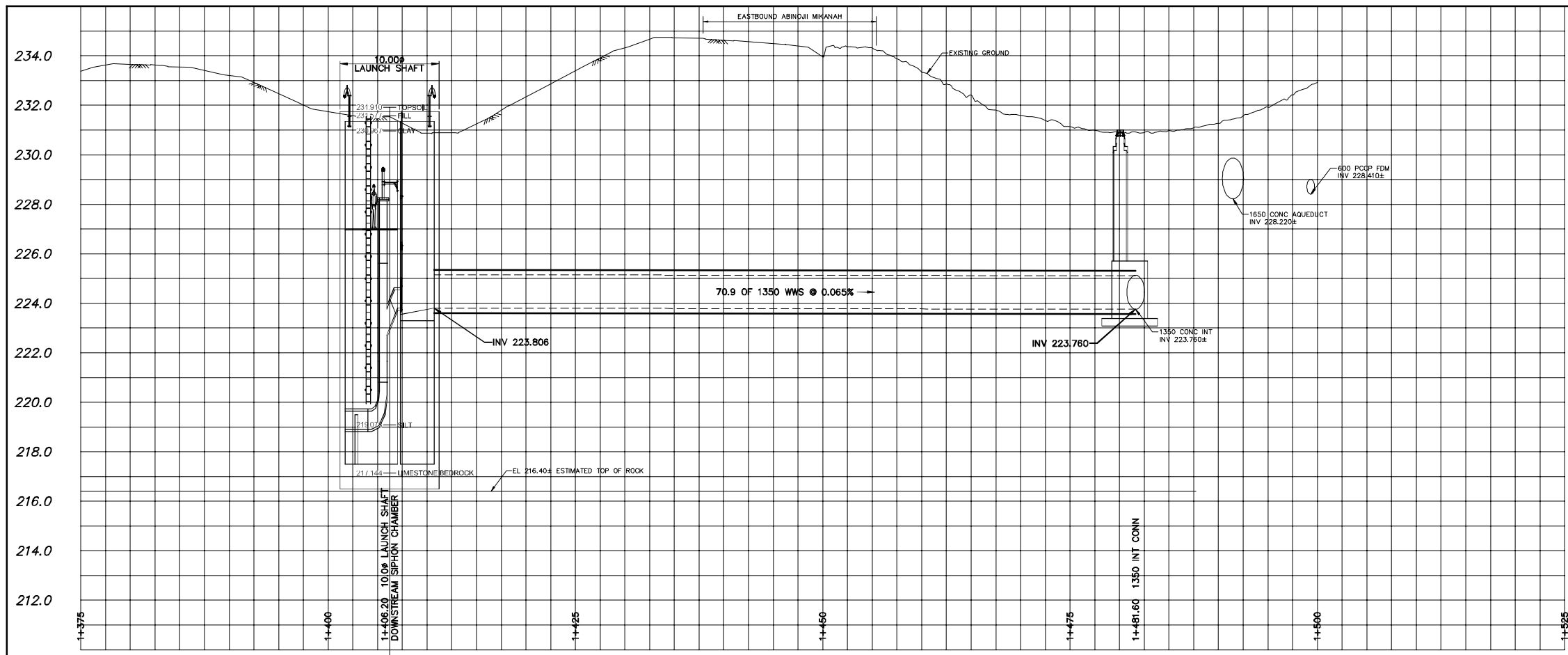
REPLACEMENT OF THE  
FORT GARY ST VITAL SIPHON

PLAN / PROFILE  
EXISTING DISCHARGE MANHOLE  
TO PROPOSED UPSTREAM SIPHON CHAMBER

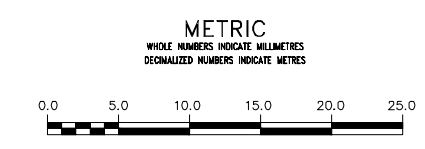
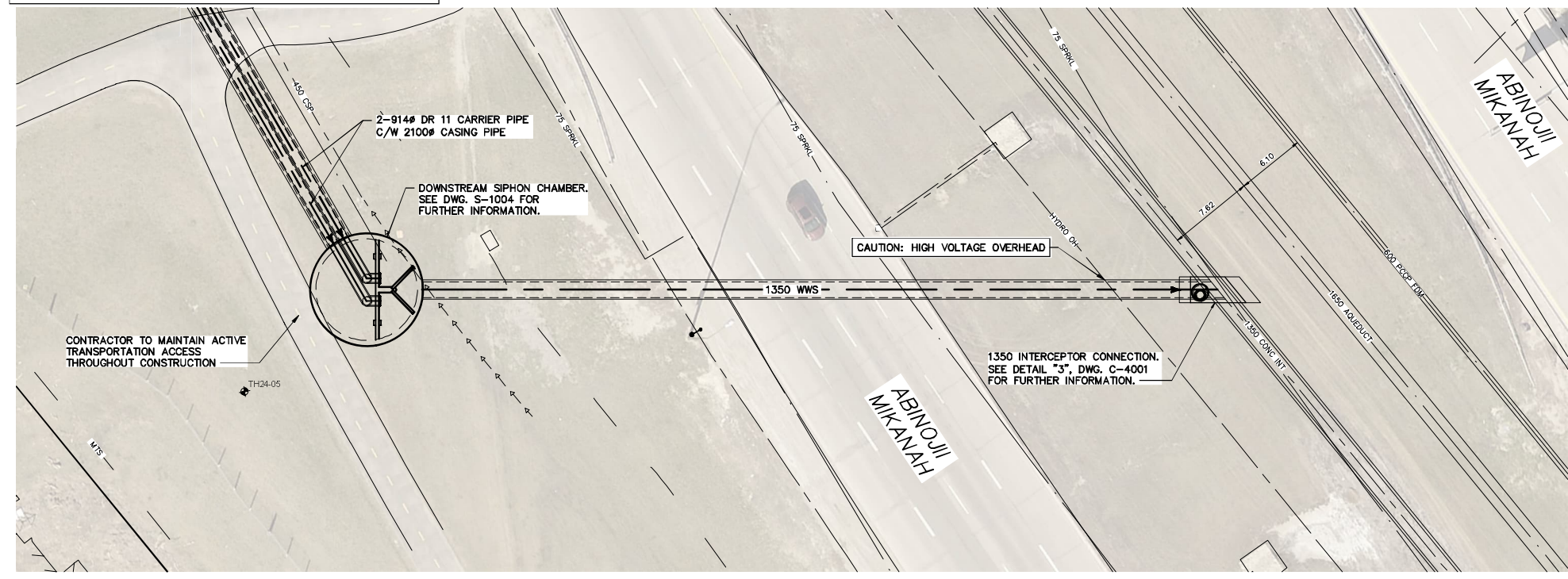
SHEET 8 OF 15  
CITY DRAWING NUMBER  
C-1006

FOR INDEX SEE  
G-1001

**ENGINEERS  
GEOSCIENTISTS  
MANITOBA**  
Certificate of Authorization  
AECOM Canada Ltd.  
No. 4671 Date: \_\_\_\_\_



NOTE: CHAINAGES SHOWN ARE ALONG C/L OF NEW PIPE.  
STA. 1+000.000 = C/L OF DISCHARGE MH



FOR INDEX SEE  
G-1001

**ENGINEERS  
GEOSCIENTISTS  
MANITOBA**  
Certificate of Authorization  
AECOM Canada Ltd.  
No. 4671 Date: \_\_\_\_\_

LOCATION APPROVED  
UNDERGROUND STRUCTURES

SUPV. U/G STRUCTURES COMMITTEE DATE

NOTE:  
LOCATION OF UNDERGROUND STRUCTURES AS SHOWN ARE BASED ON THE BEST INFORMATION AVAILABLE BUT NO GUARANTEE IS GIVEN THAT ALL EXISTING UTILITIES ARE SHOWN OR THAT THE GIVEN LOCATIONS ARE EXACT. CONFIRMATION OF EXISTENCE AND EXACT LOCATION OF ALL SERVICES MUST BE OBTAINED FROM THE INDIVIDUAL UTILITIES BEFORE PROCEEDING WITH CONSTRUCTION.

B.M. xxxxxx ELEV. xxx.xxxm	CONSTRUCTION COMPLETION DATE: YYYY MM DD												
<table border="1"> <thead> <tr> <th>NO.</th> <th>REVISIONS</th> <th>DATE</th> <th>BY</th> </tr> </thead> <tbody> <tr> <td>B</td> <td>ISSUED FOR RFQ</td> <td>24/11/18</td> <td>ADL</td> </tr> <tr> <td>A</td> <td>ISSUED FOR PRELIMINARY REVIEW</td> <td>24/09/13</td> <td>ADL</td> </tr> </tbody> </table>		NO.	REVISIONS	DATE	BY	B	ISSUED FOR RFQ	24/11/18	ADL	A	ISSUED FOR PRELIMINARY REVIEW	24/09/13	ADL
NO.	REVISIONS	DATE	BY										
B	ISSUED FOR RFQ	24/11/18	ADL										
A	ISSUED FOR PRELIMINARY REVIEW	24/09/13	ADL										

**AECOM**

DESIGNED BY: MPG	CHECKED BY:
DRAWN BY: ADL	APPROVED BY:
SCALE: HORIZONTAL 1:250 VERTICAL 1:100	RELEASED FOR CONSTRUCTION DATE:

DATE: 2024 11 18

ENGINEER'S SEAL

CONSULTANT DRAWING NUMBER  
C-1007

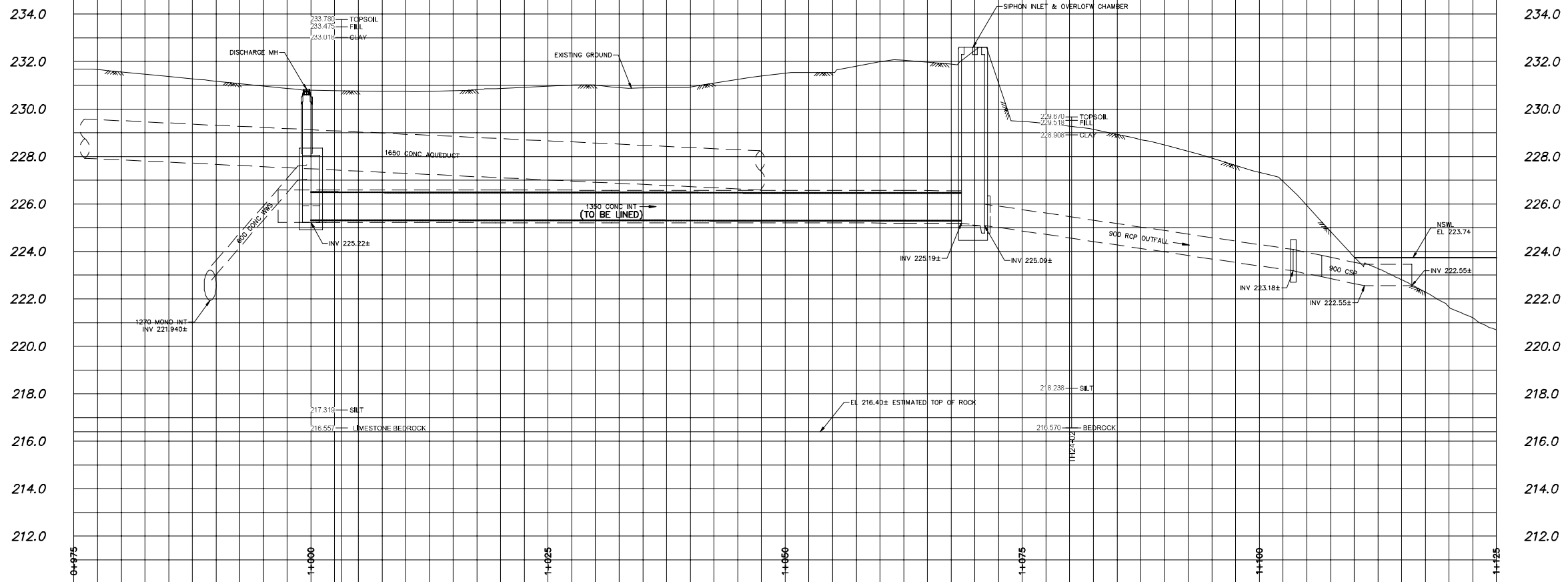
**THE CITY OF WINNIPEG**  
WATER AND WASTE DEPARTMENT  
ENGINEERING DIVISION

REPLACEMENT OF THE  
FORT GARY ST VITAL SIPHON

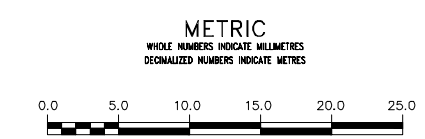
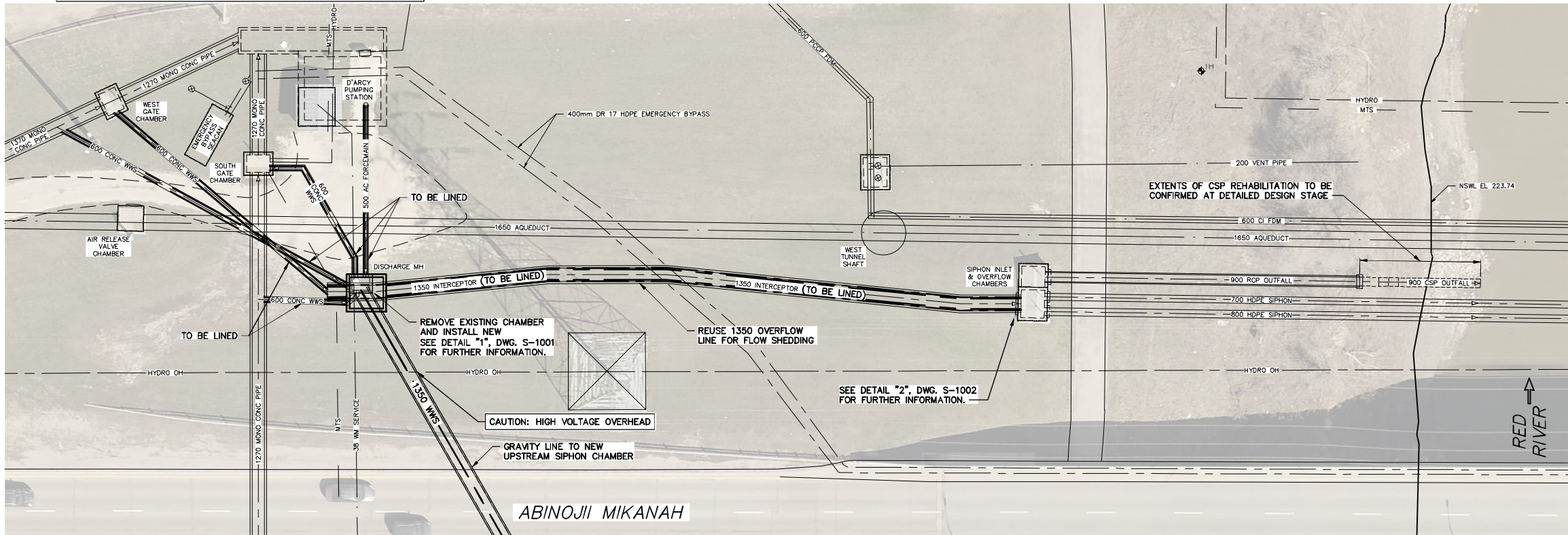
PROPOSED DOWNSTREAM SIPHON CHAMBER  
TO 1350 INTERCEPTOR

SHEET 9 OF 15  
CITY DRAWING NUMBER  
C-1007





NOTE: CHAINAGES SHOWN ARE ALONG CL OF 1350 INT.  
STA. 1+000.000 = CL OF DISCHARGE MH



LOCATION APPROVED  
UNDERGROUND STRUCTURES

SUPV. U/G STRUCTURES COMMITTEE DATE

NOTE:  
LOCATION OF UNDERGROUND STRUCTURES AS SHOWN ARE BASED ON THE BEST INFORMATION AVAILABLE BUT NO GUARANTEE IS GIVEN THAT ALL EXISTING UTILITIES ARE SHOWN OR THAT THE GIVEN LOCATIONS ARE EXACT. CONFIRMATION OF EXISTENCE AND EXACT LOCATION OF ALL SERVICES MUST BE OBTAINED FROM THE INDIVIDUAL UTILITIES BEFORE PROCEEDING WITH CONSTRUCTION.

B.M. xxxxxx ELEV. xxx,xxxm	CONSTRUCTION COMPLETION DATE: YYYY MM DD
B ISSUED FOR RFQ	24/11/18 ADL
A ISSUED FOR PRELIMINARY REVIEW	24/09/13 ADL
NO. REVISIONS	DATE BY

<b>AECOM</b>	
DESIGNED BY: MPG	CHECKED BY:
DRAWN BY: ADL	APPROVED BY:
SCALE: HORIZONTAL 1:250	RELEASED FOR CONSTRUCTION
VERTICAL 1:100	DATE
DATE: 2024 11 18	DATE:

ENGINEER'S SEAL

CONSULTANT DRAWING NUMBER  
C-1008

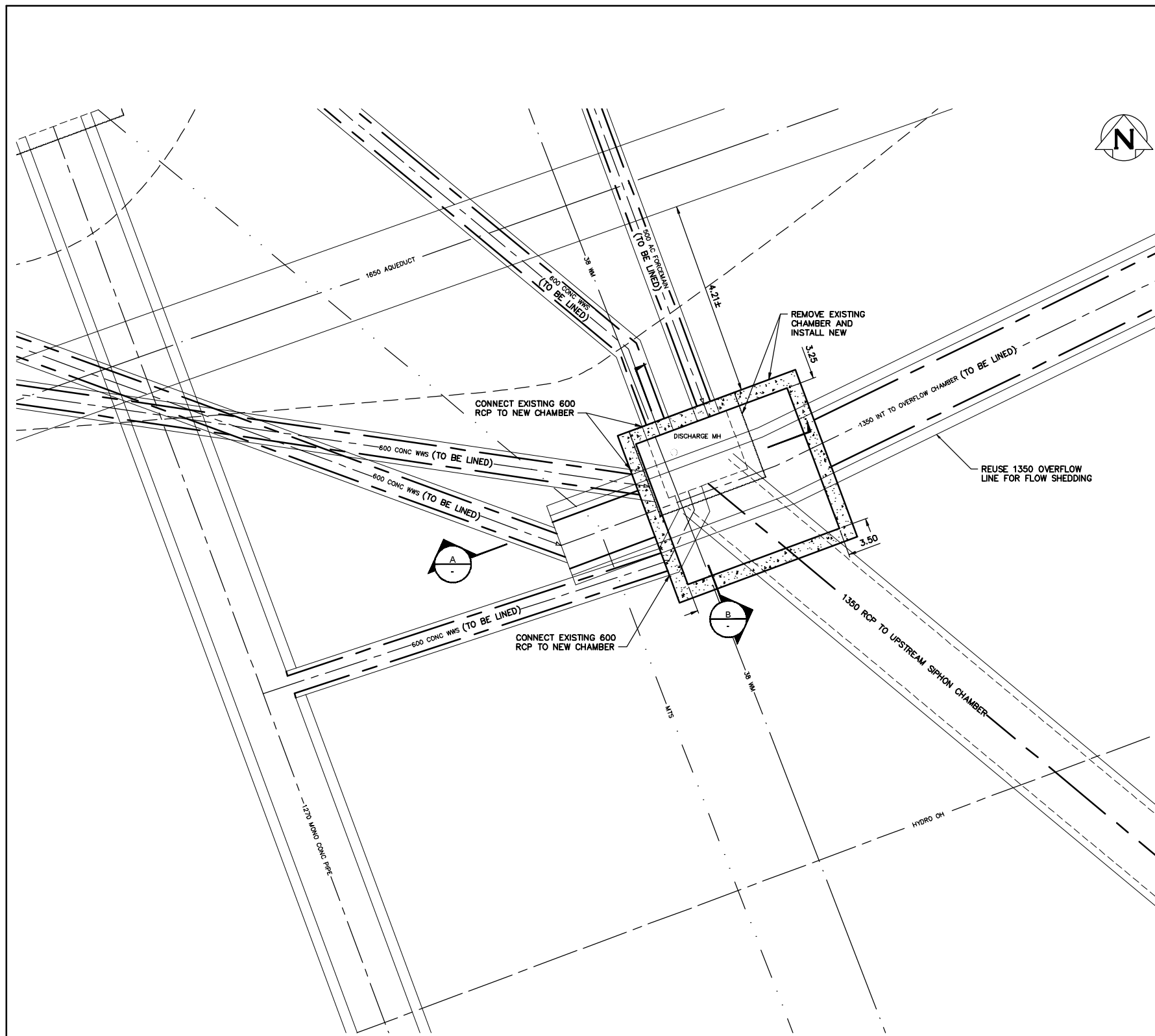
**THE CITY OF WINNIPEG**  
WATER AND WASTE DEPARTMENT  
ENGINEERING DIVISION

REPLACEMENT OF THE  
FORT GARY ST VITAL SIPHON  
PLAN / PROFILE  
EXISTING DISCHARGE MANHOLE  
TO SIPHON INLET & OVERFLOW CHAMBERS

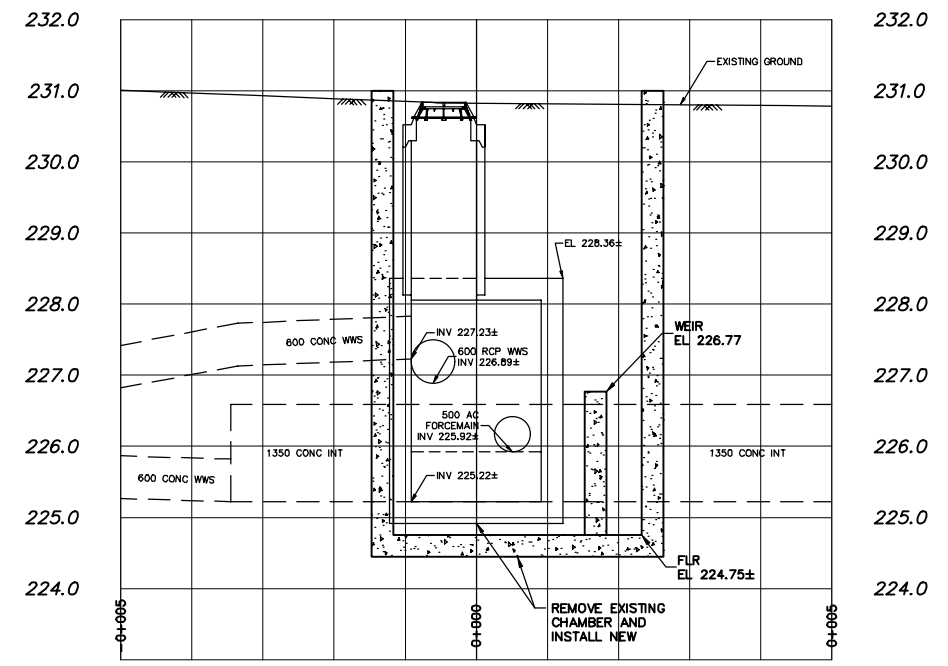
SHEET 10 OF 15  
CITY DRAWING NUMBER  
C-1008

FOR INDEX SEE  
G-1001

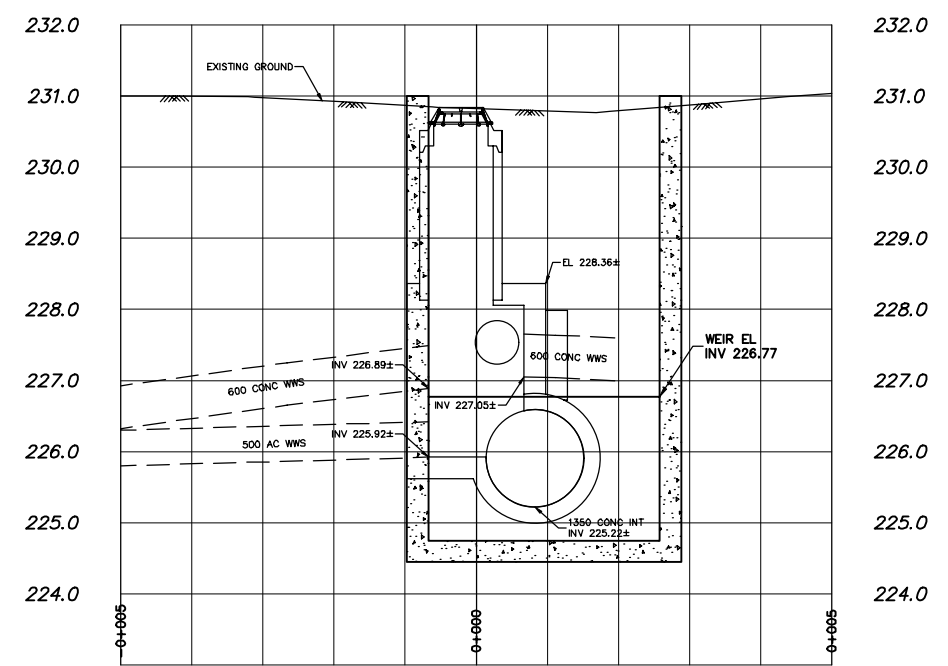
**ENGINEERS  
GEOSCIENTISTS  
MANITOBA**  
Certificate of Authorization  
AECOM Canada Ltd.  
No. 4671 Date: \_\_\_\_\_



DETAIL "1"  
SCALE 1:50



SECTION "A"  
SCALE 1:50



SECTION "B"  
SCALE 1:50

METRIC  
WHOLE NUMBERS INDICATE MILLIMETRES  
DECIMALIZED NUMBERS INDICATE METRES

LOCATION APPROVED UNDERGROUND STRUCTURES			
SUPV. U/G STRUCTURES COMMITTEE	DATE		
NOTE: LOCATION OF UNDERGROUND STRUCTURES AS SHOWN ARE BASED ON THE BEST INFORMATION AVAILABLE BUT NO GUARANTEE IS GIVEN THAT ALL EXISTING UTILITIES ARE SHOWN OR THAT THE GIVEN LOCATIONS ARE EXACT. CONFIRMATION OF EXISTENCE AND EXACT LOCATION OF ALL SERVICES MUST BE OBTAINED FROM THE INDIVIDUAL UTILITIES BEFORE PROCEEDING WITH CONSTRUCTION.			

B.M. xxxxxx ELEV. xxx.xx00m	CONSTRUCTION COMPLETION DATE: YYYY MM DD		
B	ISSUED FOR RFQ	24/11/18	ADL
A	ISSUED FOR PRELIMINARY REVIEW	24/09/13	ADL
NO.	REVISIONS	DATE	BY

**AECOM**

DESIGNED BY MPG	CHECKED BY
DRAWN BY ADL	APPROVED BY
SCALE: HORIZONTAL 1:50 VERTICAL -	RELEASED FOR CONSTRUCTION
DATE 2024 11 18	DATE

ENGINEER'S SEAL  
  
CONSULTANT DRAWING NUMBER  
S-1001

**THE CITY OF WINNIPEG**  
WATER AND WASTE DEPARTMENT  
ENGINEERING DIVISION

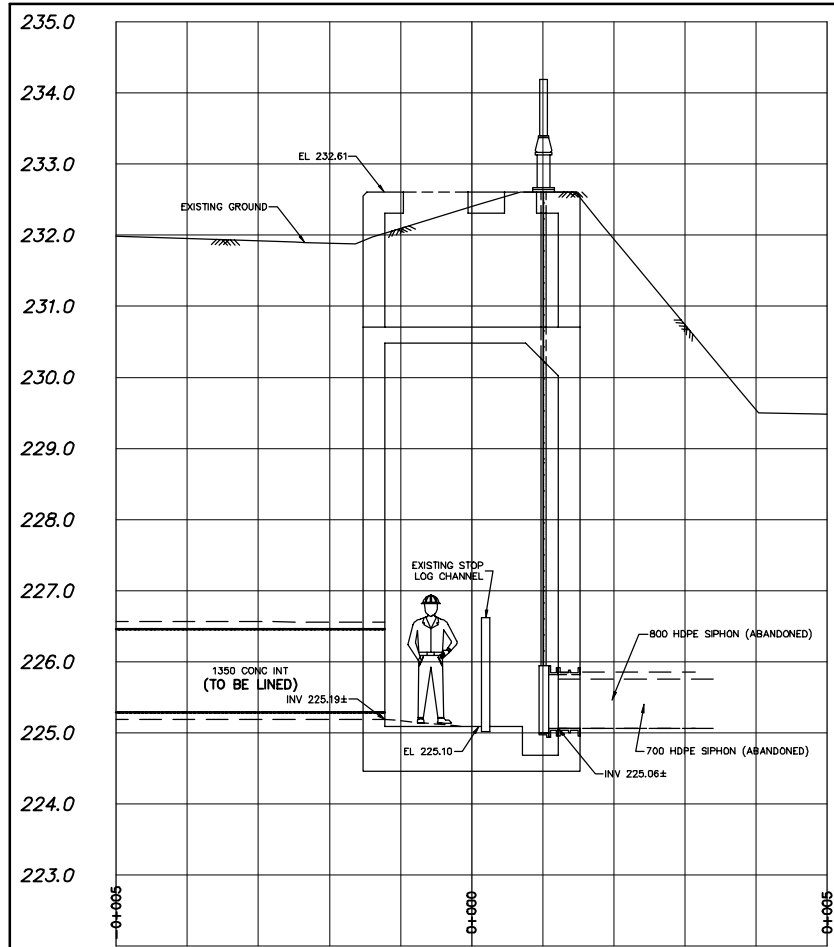
REPLACEMENT OF THE  
FORT GARY ST VITAL SIPHON  
DISCHARGE MANHOLE  
SECTIONS & DETAILS

SHEET 11 OF 15  
CITY DRAWING NUMBER  
S-1001

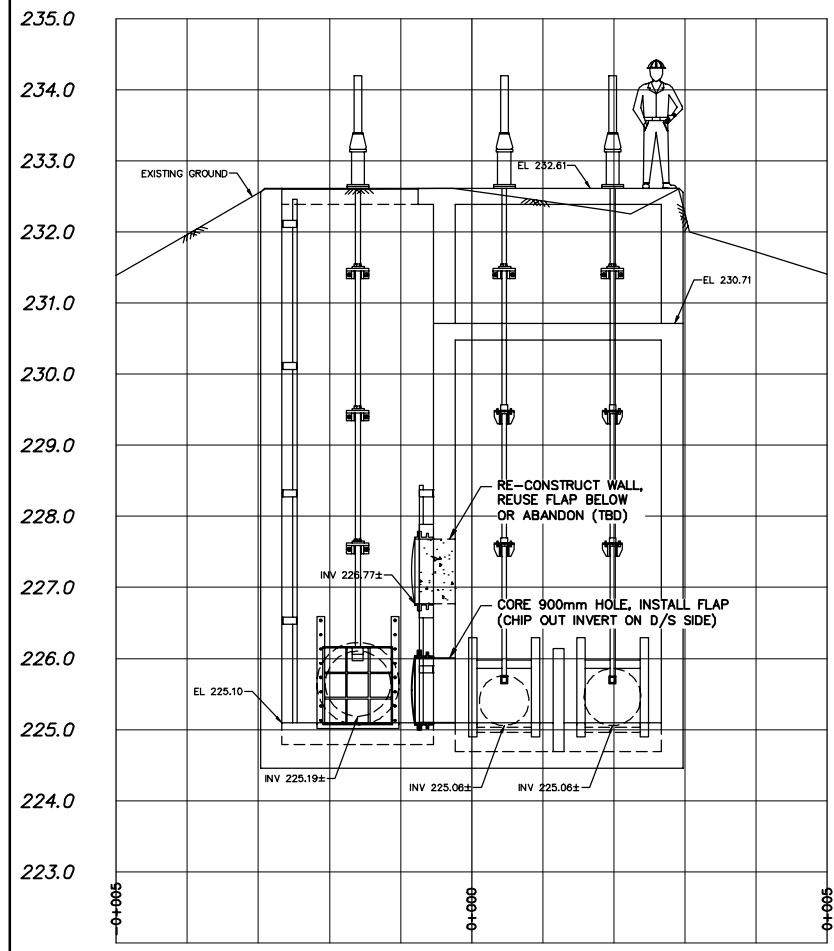
FOR INDEX SEE  
G-1001

**ENGINEERS  
GEOSCIENTISTS  
MANITOBA**  
Certificate of Authorization  
AECOM Canada Ltd.  
No. 4671 Date: \_\_\_\_\_

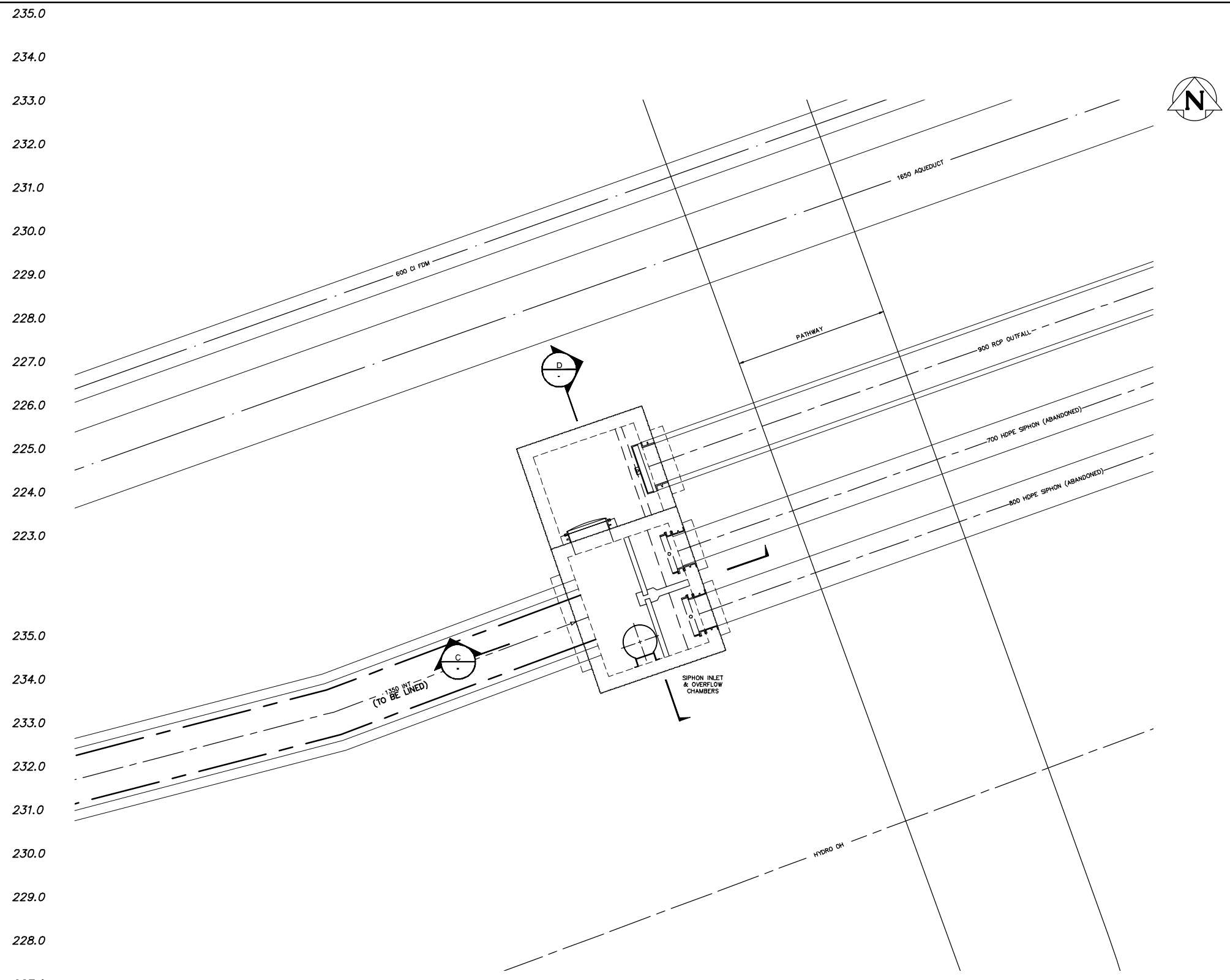




SECTION "C"  
SCALE 1:50



SECTION "D"  
SCALE 1:50



DETAIL "2"  
SCALE 1:50



METRIC  
WHOLE NUMBERS INDICATE MILLIMETRES  
DECIMALIZED NUMBERS INDICATE METRES

LOCATION APPROVED UNDERGROUND STRUCTURES	
SUPV. U/G STRUCTURES COMMITTEE	DATE
NOTE: LOCATION OF UNDERGROUND STRUCTURES AS SHOWN ARE BASED ON THE BEST INFORMATION AVAILABLE BUT NO GUARANTEE IS GIVEN THAT ALL EXISTING UTILITIES ARE SHOWN OR THAT THE GIVEN LOCATIONS ARE EXACT. CONFIRMATION OF EXISTENCE AND EXACT LOCATION OF ALL SERVICES MUST BE OBTAINED FROM THE INDIVIDUAL UTILITIES BEFORE PROCEEDING WITH CONSTRUCTION.	

B.M. xxxxxxx ELEV. xxx.xx00m	CONSTRUCTION COMPLETION DATE: YYYY MM DD		
B	ISSUED FOR RFQ	24/11/18	ADL
A	ISSUED FOR PRELIMINARY REVIEW	24/09/13	ADL
NO.	REVISIONS	DATE	BY

<b>AECOM</b>		DESIGNED BY	MPG	CHECKED BY	
		DRAWN BY	ADL	APPROVED BY	
SCALE:		HORIZONTAL	1:50	RELEASED FOR CONSTRUCTION	
		VERTICAL	-	DATE	
PLOT DATE:		2024 11 18		DATE	

ENGINEER'S SEAL
CONSULTANT DRAWING NUMBER
S-1002

**THE CITY OF WINNIPEG**  
WATER AND WASTE DEPARTMENT  
ENGINEERING DIVISION

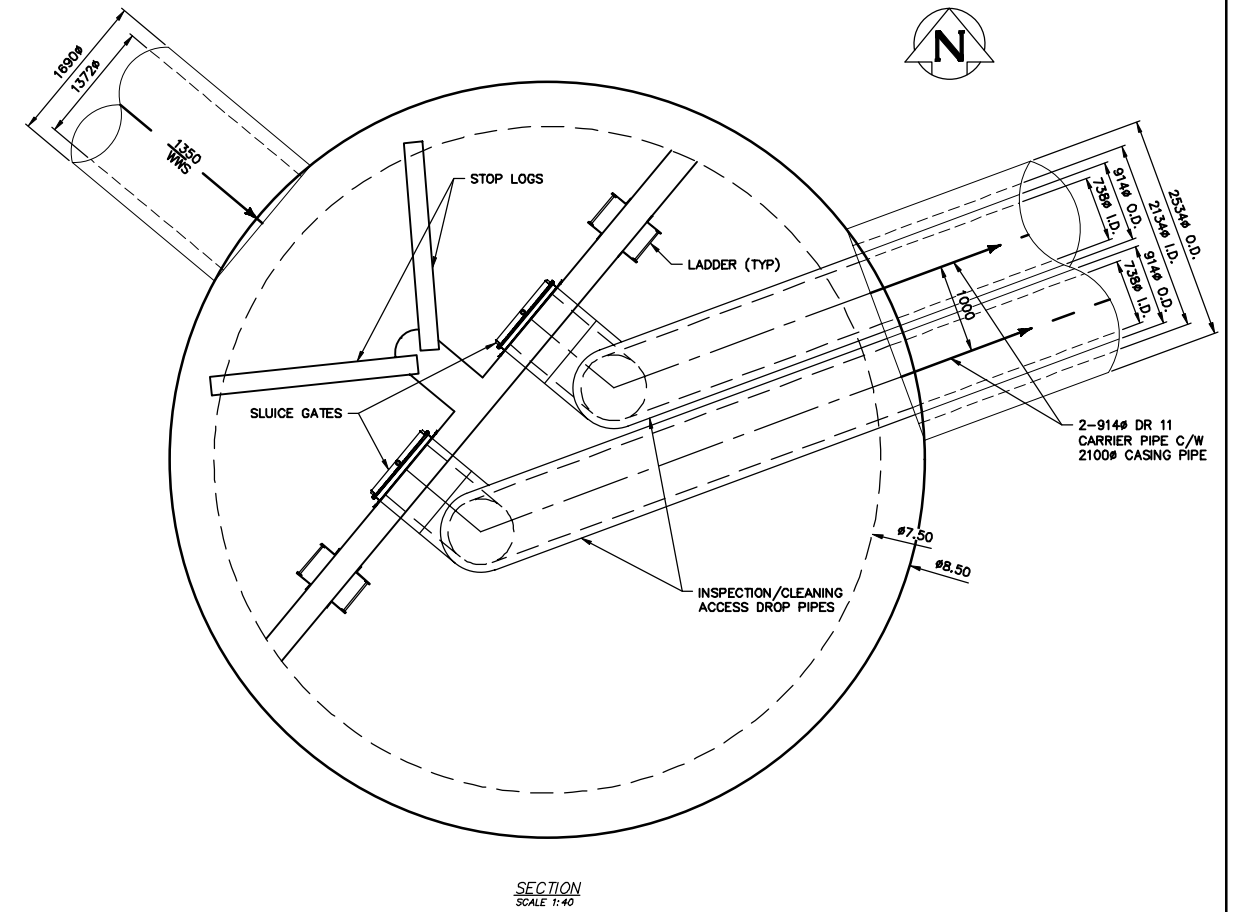
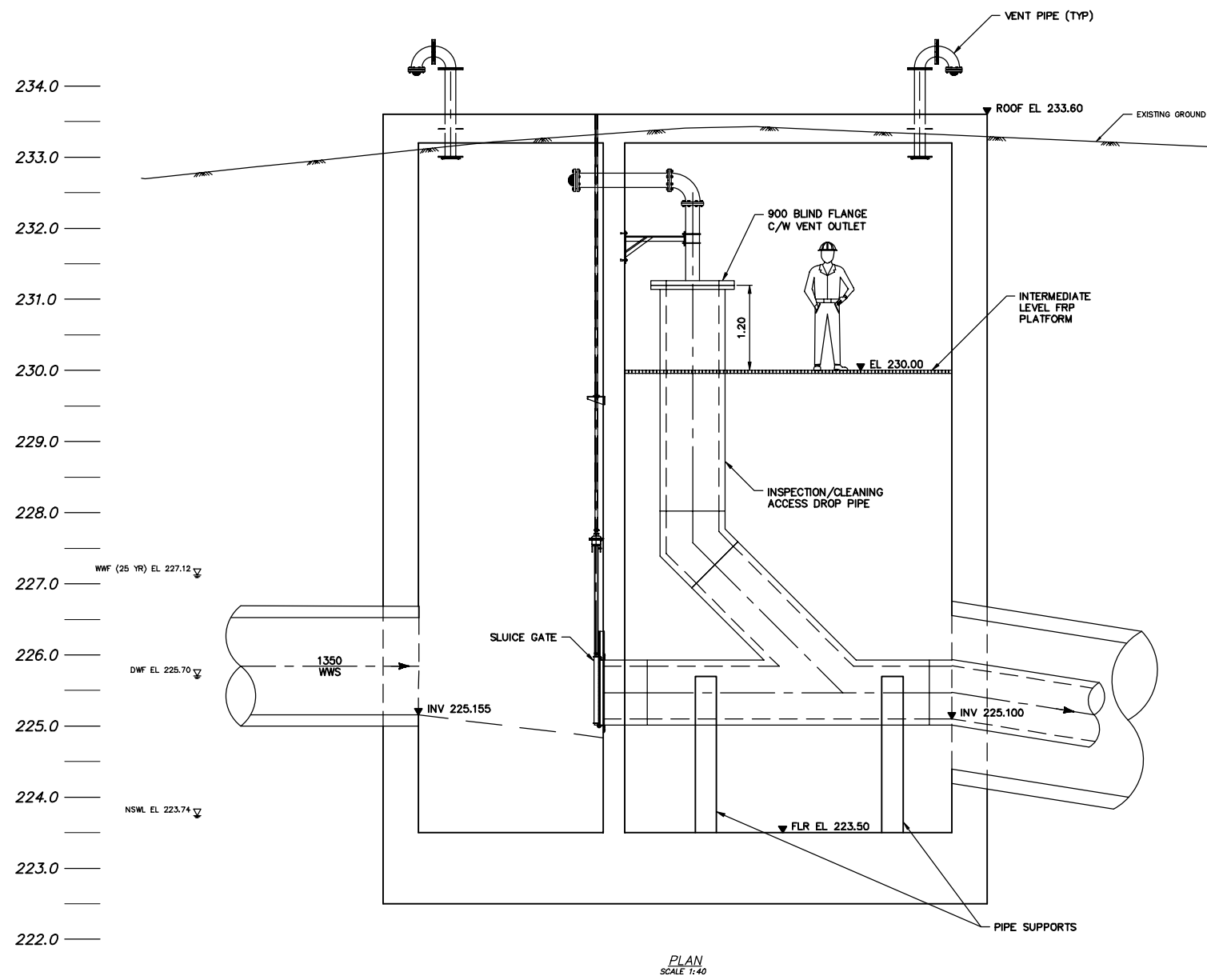
REPLACEMENT OF THE  
FORT GARY ST VITAL SIPHON  
SIPHON INLET & OVERFLOW CHAMBERS  
SECTIONS & DETAILS

SHEET 12 OF 15  
CITY DRAWING NUMBER  
S-1002

FOR INDEX SEE  
G-1001

**ENGINEERS**  
GEOLOGICISTS  
MANITOBA

Certificate of Authorization  
AECOM Canada Ltd.  
No. 4671 Date: \_\_\_\_\_



PLAN  
SCALE 1:40

SECTION  
SCALE 1:40

METRIC  
WHOLE NUMBERS INDICATE MILLIMETRES  
DECIMALIZED NUMBERS INDICATE METRES

LOCATION APPROVED UNDERGROUND STRUCTURES	
SUPV. U/G STRUCTURES COMMITTEE	DATE
NOTE: LOCATION OF UNDERGROUND STRUCTURES AS SHOWN ARE BASED ON THE BEST INFORMATION AVAILABLE BUT NO GUARANTEE IS GIVEN THAT ALL EXISTING UTILITIES ARE SHOWN OR THAT THE GIVEN LOCATIONS ARE EXACT. CONFIRMATION OF EXISTENCE AND EXACT LOCATION OF ALL UTILITIES MUST BE OBTAINED FROM THE INDIVIDUAL UTILITIES BEFORE PROCEEDING WITH CONSTRUCTION.	

B.M. xxxxxx ELEV. xxx,xxxm	CONSTRUCTION COMPLETION DATE: YYYY MM DD	
B	ISSUED FOR RFQ	24/11/18 ADL
A	ISSUED FOR PRELIMINARY REVIEW	24/09/13 ADL
NO.	REVISIONS	DATE BY

<b>AECOM</b>	
DESIGNED BY	JAT
CHECKED BY	
DRAWN BY	ADL
APPROVED BY	
SCALE:	
HORIZONTAL	1:40
VERTICAL	-
DATE	2024 11 18

ENGINEER'S SEAL
CONSULTANT DRAWING NUMBER
S-1003

**THE CITY OF WINNIPEG**  
 WATER AND WASTE DEPARTMENT  
 ENGINEERING DIVISION

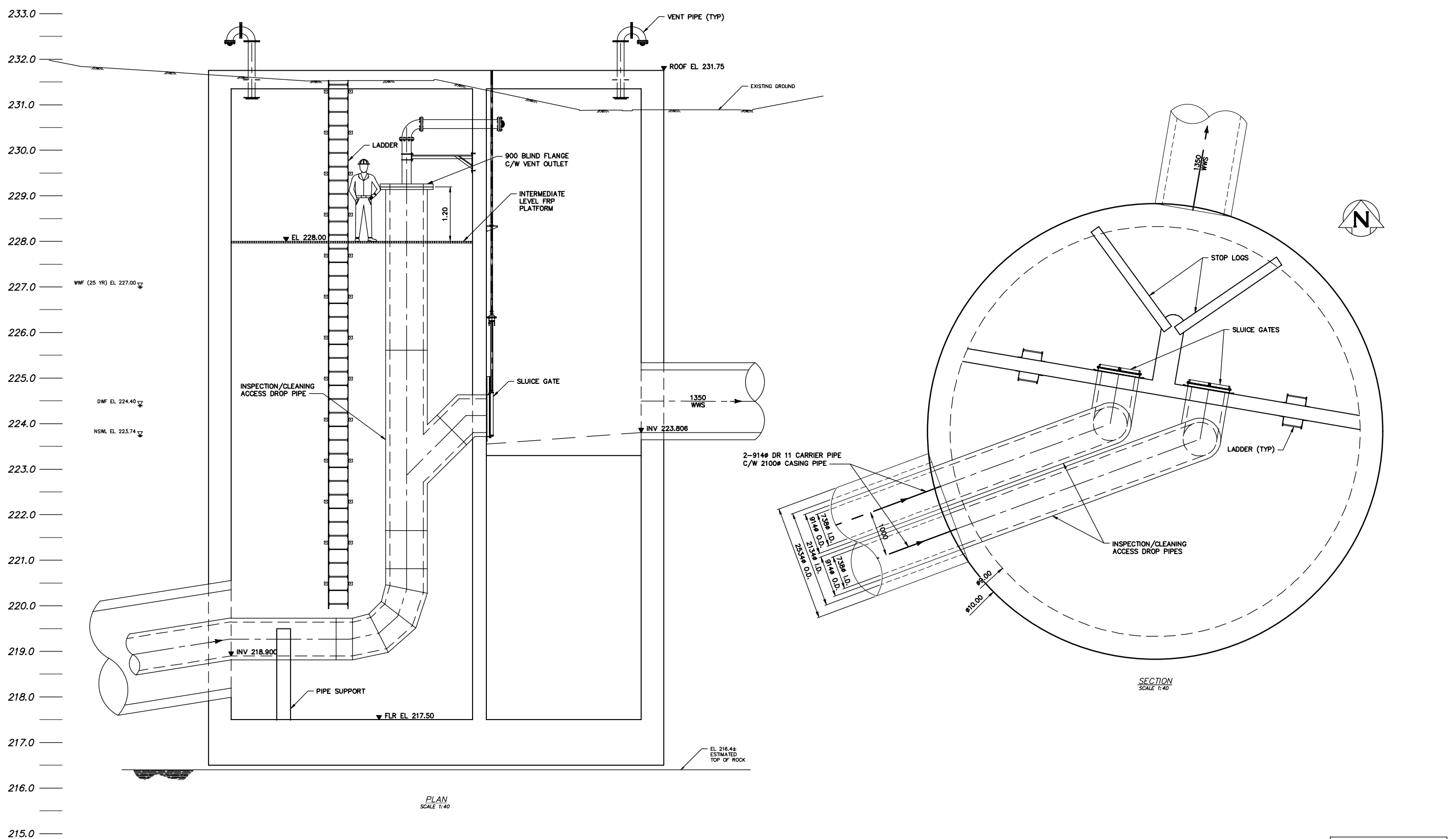
REPLACEMENT OF THE  
 FORT GARY ST VITAL SIPHON  
 PROPOSED UPSTREAM SIPHON CHAMBER  
 SECTIONS & DETAILS

SHEET 13 OF 15  
 CITY DRAWING NUMBER  
 S-1003

FOR INDEX SEE  
G-1001

**ENGINEERS  
GEOLOGISTS  
MANITOBA**  
 Certificate of Authorization  
 AECOM Canada Ltd.  
 No. 4671 Date: \_\_\_\_\_





**METRIC**  
WHOLE NUMBERS INDICATE MILLIMETRES  
DECIMALIZED NUMBERS INDICATE METRES

**FOR INDEX SEE  
G-1001**

**ENGINEERS  
GEOSCIENTISTS  
MANITOBA**  
Certificate of Authorization  
AECOM Canada Ltd.  
No. 4671 Date: \_\_\_\_\_

LOCATION APPROVED UNDERGROUND STRUCTURES		B.M. xxxxxx ELEV. xxx,xxxm	
CONSTRUCTION COMPLETION DATE: YYYY MM DD			
SUPERVISOR: _____ DATE: _____			
NOTE: LOCATION OF UNDERGROUND STRUCTURES AS SHOWN ARE BASED ON THE BEST INFORMATION AVAILABLE BUT NO GUARANTEE IS GIVEN THAT ALL EXISTING UTILITIES ARE SHOWN OR THAT THE GIVEN LOCATIONS ARE EXACT. CONFIRMATION OF EXISTENCE AND EXACT LOCATION OF ALL UTILITIES MUST BE OBTAINED FROM THE INDIVIDUAL UTILITIES BEFORE PROCEEDING WITH CONSTRUCTION.			
B	ISSUED FOR RFQ	24/11/18	ADL
A	ISSUED FOR PRELIMINARY REVIEW	24/09/13	ADL
NO.	REVISIONS	DATE	BY

**AECOM**

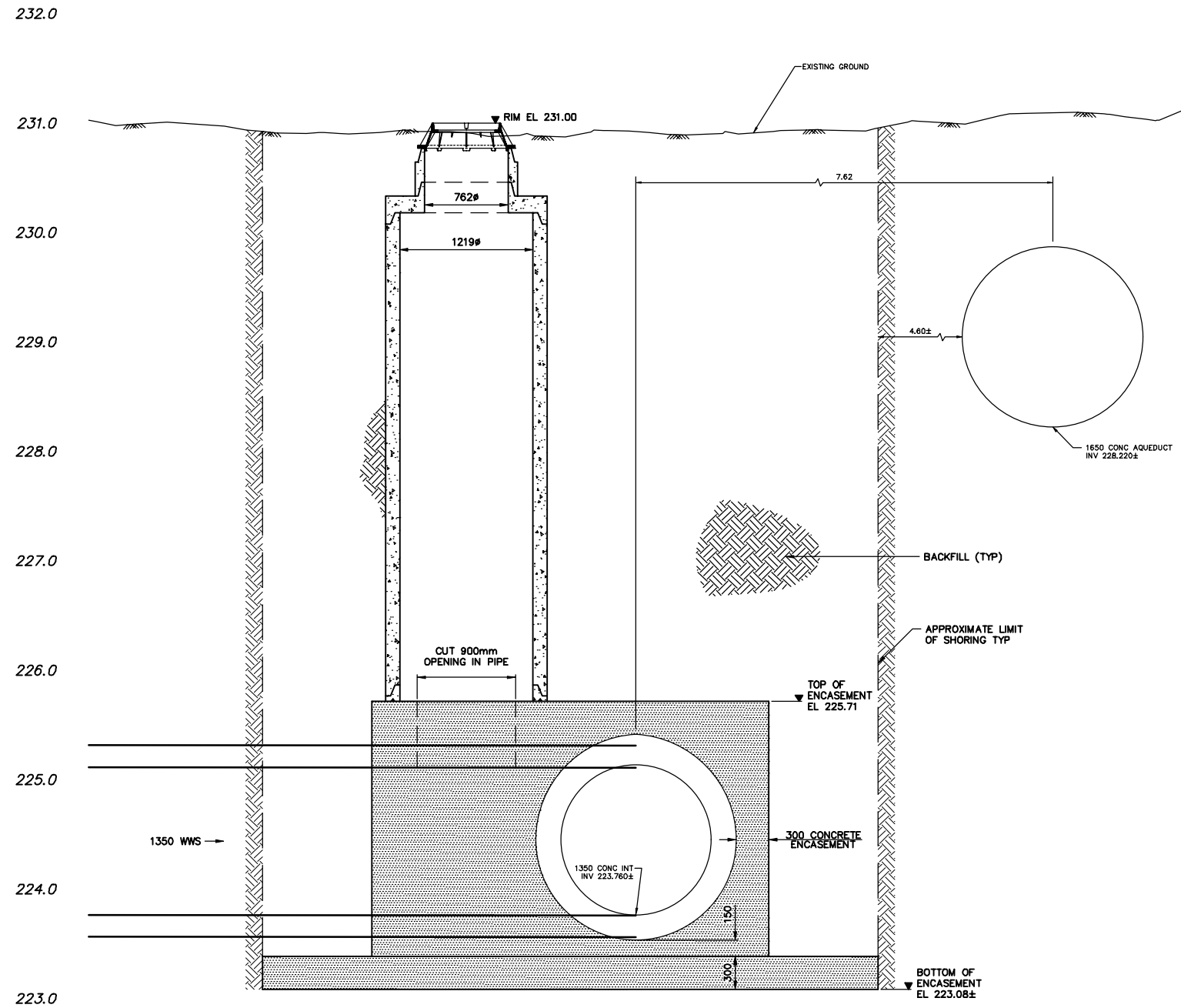
DESIGNED BY: JAT	CHECKED BY:
DRAWN BY: ADL	APPROVED BY:
SCALE: HORIZONTAL 1:40	RELEASED FOR CONSTRUCTION
VERTICAL -	DATE: 2024 11 18

ENGINEER'S SEAL  
CONSULTANT DRAWING NUMBER  
S-1004

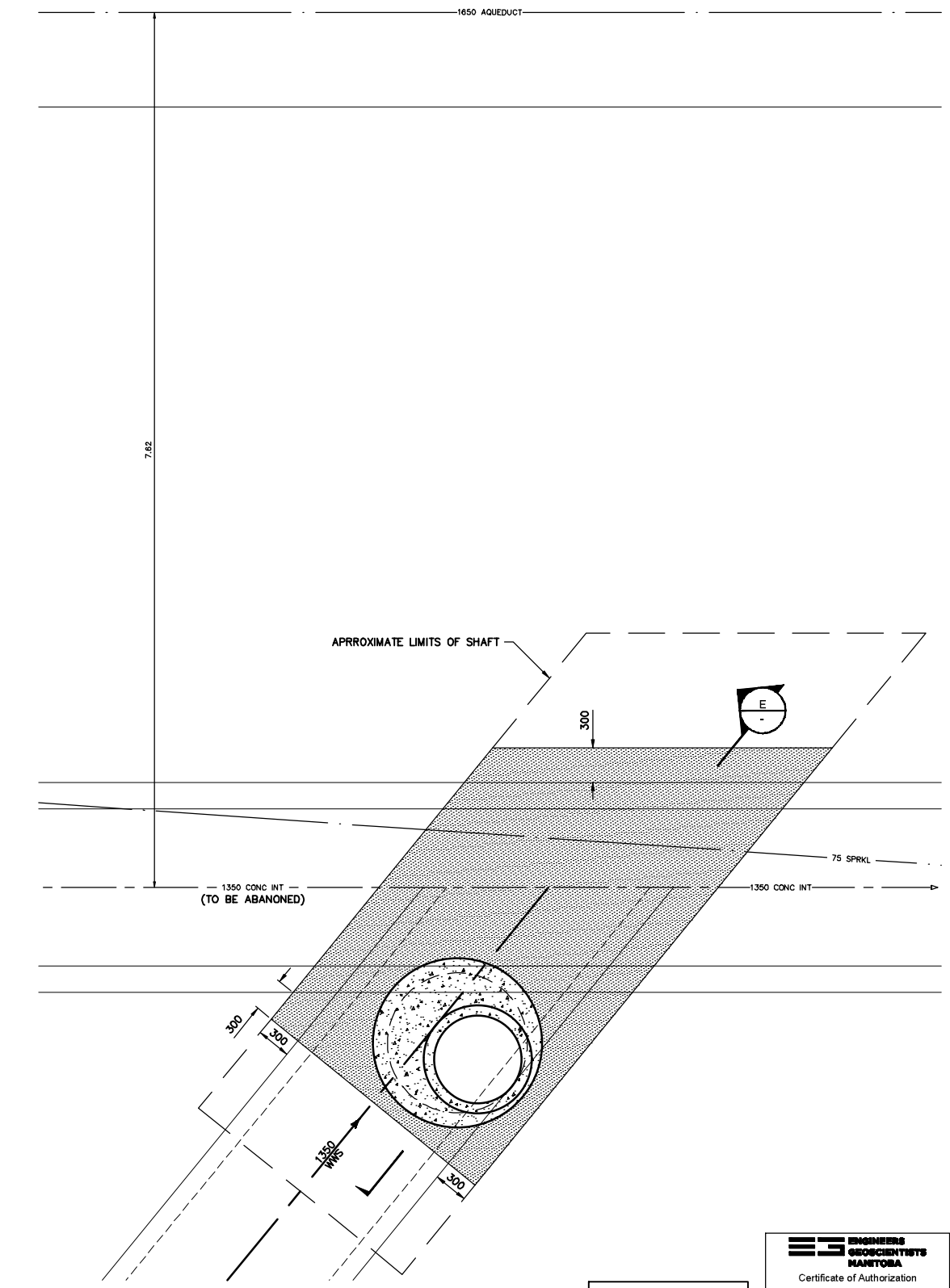
**THE CITY OF WINNIPEG**  
WATER AND WASTE DEPARTMENT  
ENGINEERING DIVISION

REPLACEMENT OF THE FORT GARY ST VITAL SIPHON  
**PROPOSED DOWNSTREAM SIPHON CHAMBER SECTIONS & DETAILS**

SHEET 14 OF 15  
CITY DRAWING NUMBER  
S-1004



SECTION "E"  
SCALE 1:25



DETAIL "3"  
SCALE 1:25

METRIC  
WHOLE NUMBERS INDICATE MILLIMETRES  
DECIMALIZED NUMBERS INDICATE METRES

FOR INDEX SEE  
G-1001

**ENGINEERS**  
**GEOSCIENTISTS**  
**MANITOBA**  
Certificate of Authorization  
AECOM Canada Ltd.  
No. 4671 Date: \_\_\_\_\_

LOCATION APPROVED UNDERGROUND STRUCTURES	
SUPV. U/G STRUCTURES COMMITTEE	DATE
NOTE: LOCATION OF UNDERGROUND STRUCTURES AS SHOWN ARE BASED ON THE BEST INFORMATION AVAILABLE BUT NO GUARANTEE IS GIVEN THAT ALL EXISTING UTILITIES ARE SHOWN OR THAT THE GIVEN LOCATIONS ARE EXACT. CONFIRMATION OF EXISTENCE AND EXACT LOCATION OF ALL SERVICES MUST BE OBTAINED FROM THE INDIVIDUAL UTILITIES BEFORE PROCEEDING WITH CONSTRUCTION.	

B.M. xxxxxxx	ELEV. xxx.xxxxm		
CONSTRUCTION COMPLETION DATE: YYYY MM DD			
B	ISSUED FOR RFQ	24/11/18	ADL
A	ISSUED FOR PRELIMINARY REVIEW	24/09/13	ADL
NO.	REVISIONS	DATE	BY

**AECOM**

DESIGNED BY	MPG	CHECKED BY	
DRAWN BY	ADL	APPROVED BY	
SCALE:		RELEASED FOR CONSTRUCTION	
HORIZONTAL	1:25		
VERTICAL	-		
DATE	2024 11 18	DATE	

ENGINEER'S SEAL  
CONSULTANT DRAWING NUMBER  
C-4001

**THE CITY OF WINNIPEG**  
WATER AND WASTE DEPARTMENT  
ENGINEERING DIVISION

REPLACEMENT OF THE  
FORT GARY ST VITAL SIPHON  
DETAILS

SHEET 15 OF 15  
CITY DRAWING NUMBER  
C-4001