

ELECTRICAL SYMBOL LEGEND																																																																																																														
<table border="1"> <thead> <tr> <th>SYMBOL</th> <th>DESCRIPTION</th> </tr> </thead> <tbody> <tr> <td></td> <td>LIGHTING</td> </tr> <tr> <td></td> <td>SURFACE LIGHT</td> </tr> <tr> <td></td> <td>RECESSED LIGHT (TYPE DENOTED)</td> </tr> <tr> <td></td> <td>SUSPENDED OR PENDANT LIGHT</td> </tr> <tr> <td></td> <td>RECESSED DOWNLIGHT (WALL WASH)</td> </tr> <tr> <td></td> <td>SUSPENDED RING LIGHT</td> </tr> <tr> <td></td> <td>STRIP LIGHT (TYPE DENOTED)</td> </tr> <tr> <td></td> <td>BOLLARD</td> </tr> <tr> <td></td> <td>EMERGENCY BATTERY LIGHT (TYPE DENOTED)</td> </tr> <tr> <td></td> <td>EMERGENCY LIGHT - REMOTE HEAD</td> </tr> <tr> <td></td> <td>EXIT LIGHT</td> </tr> <tr> <td></td> <td>EXIT LIGHT C/W REMOTE HEAD</td> </tr> <tr> <td></td> <td>LIGHT FIXTURE ON (EM) LIFE SAFETY BRANCH</td> </tr> <tr> <td></td> <td>LIGHT FIXTURE ON (EM) CRITICAL BRANCH</td> </tr> <tr> <td></td> <td>SINGLE POLE SW</td> </tr> <tr> <td></td> <td>2 POLE SINGLE THROW SW</td> </tr> <tr> <td></td> <td>SINGLE RECEPT</td> </tr> </tbody> </table>	SYMBOL	DESCRIPTION		LIGHTING		SURFACE LIGHT		RECESSED LIGHT (TYPE DENOTED)		SUSPENDED OR PENDANT LIGHT		RECESSED DOWNLIGHT (WALL WASH)		SUSPENDED RING LIGHT		STRIP LIGHT (TYPE DENOTED)		BOLLARD		EMERGENCY BATTERY LIGHT (TYPE DENOTED)		EMERGENCY LIGHT - REMOTE HEAD		EXIT LIGHT		EXIT LIGHT C/W REMOTE HEAD		LIGHT FIXTURE ON (EM) LIFE SAFETY BRANCH		LIGHT FIXTURE ON (EM) CRITICAL BRANCH		SINGLE POLE SW		2 POLE SINGLE THROW SW		SINGLE RECEPT	<table border="1"> <thead> <tr> <th>SYMBOL</th> <th>DESCRIPTION</th> </tr> </thead> <tbody> <tr> <td></td> <td>DUPLEX RECEPT</td> </tr> <tr> <td></td> <td>RECEPT ON DROP CORD (DUPLEX SHOWN)</td> </tr> <tr> <td></td> <td>RECEPT ON CORD REEL (DUPLEX SHOWN)</td> </tr> <tr> <td></td> <td>SPLIT DUPLEX RECEPT</td> </tr> <tr> <td></td> <td>RECEPT ON EMERGENCY CKT (DUPLEX SHOWN)</td> </tr> <tr> <td></td> <td>RECEPT C/W WET LOCATION COVERPLATE (DUPLEX SHOWN)</td> </tr> <tr> <td></td> <td>RECEPT C/W INTEGRAL GFI (DUPLEX SHOWN)</td> </tr> <tr> <td></td> <td>RECEPT C/W NEMA 5-20R CONFIG</td> </tr> <tr> <td></td> <td>RECEPT MTD IN FLOOR (DUPLEX SHOWN)</td> </tr> <tr> <td></td> <td>RECEPT MTD IN MILLWORK (DUPLEX SHOWN)</td> </tr> <tr> <td></td> <td>JUNCTION BOX</td> </tr> <tr> <td></td> <td>PULL BOX</td> </tr> <tr> <td></td> <td>GROUND ROD</td> </tr> <tr> <td></td> <td>GROUND CONNECTION TO STEEL OR STRUCTURE</td> </tr> <tr> <td></td> <td>GROUND CONNECTION - EXOTHERMIC WELD</td> </tr> <tr> <td></td> <td>BUS CONNECTION</td> </tr> <tr> <td></td> <td>TELECOM GROUND BUS</td> </tr> <tr> <td></td> <td>STATIC GROUND RECEPT (TYPE DENOTED)</td> </tr> </tbody> </table>	SYMBOL	DESCRIPTION		DUPLEX RECEPT		RECEPT ON DROP CORD (DUPLEX SHOWN)		RECEPT ON CORD REEL (DUPLEX SHOWN)		SPLIT DUPLEX RECEPT		RECEPT ON EMERGENCY CKT (DUPLEX SHOWN)		RECEPT C/W WET LOCATION COVERPLATE (DUPLEX SHOWN)		RECEPT C/W INTEGRAL GFI (DUPLEX SHOWN)		RECEPT C/W NEMA 5-20R CONFIG		RECEPT MTD IN FLOOR (DUPLEX SHOWN)		RECEPT MTD IN MILLWORK (DUPLEX SHOWN)		JUNCTION BOX		PULL BOX		GROUND ROD		GROUND CONNECTION TO STEEL OR STRUCTURE		GROUND CONNECTION - EXOTHERMIC WELD		BUS CONNECTION		TELECOM GROUND BUS		STATIC GROUND RECEPT (TYPE DENOTED)	<table border="1"> <thead> <tr> <th>SYMBOL</th> <th>DESCRIPTION</th> </tr> </thead> <tbody> <tr> <td></td> <td>SPECIAL CONNECTION (SEE SCHEDULE)</td> </tr> <tr> <td></td> <td>MOTOR (SEE SCHEDULE)</td> </tr> <tr> <td></td> <td>POWER OR DISTRIBUTION PANEL</td> </tr> <tr> <td></td> <td>SPECIAL CABINET (TYPE DENOTED)</td> </tr> <tr> <td colspan="2"><b>GENERAL ELECTRIC</b></td> </tr> <tr> <td></td> <td>LIGHT SYMBOL INDICATES EXISTING</td> </tr> <tr> <td></td> <td>DASHED SYMBOL INDICATES REMOVED</td> </tr> <tr> <td></td> <td>KEYPAD</td> </tr> <tr> <td></td> <td>SECURITY NOTIFICATION APPLIANCE</td> </tr> <tr> <td></td> <td>VIBRATION DETECTION (TYPE DENOTED)</td> </tr> <tr> <td></td> <td>DURESS PUSHBUTTON - RECESSED</td> </tr> <tr> <td></td> <td>DURESS ALERT LIGHT</td> </tr> <tr> <td></td> <td>DURESS RANGE EXTENDER</td> </tr> <tr> <td></td> <td>ACCESS CONTROL ENCLOSURE</td> </tr> <tr> <td></td> <td>INTRUSION DETECTION SYSTEM CONTROL PANEL</td> </tr> <tr> <td></td> <td>INTRUSION DETECTION SYSTEM CONTROL PANEL - INDEPENDENT</td> </tr> </tbody> </table>	SYMBOL	DESCRIPTION		SPECIAL CONNECTION (SEE SCHEDULE)		MOTOR (SEE SCHEDULE)		POWER OR DISTRIBUTION PANEL		SPECIAL CABINET (TYPE DENOTED)	<b>GENERAL ELECTRIC</b>			LIGHT SYMBOL INDICATES EXISTING		DASHED SYMBOL INDICATES REMOVED		KEYPAD		SECURITY NOTIFICATION APPLIANCE		VIBRATION DETECTION (TYPE DENOTED)		DURESS PUSHBUTTON - RECESSED		DURESS ALERT LIGHT		DURESS RANGE EXTENDER		ACCESS CONTROL ENCLOSURE		INTRUSION DETECTION SYSTEM CONTROL PANEL		INTRUSION DETECTION SYSTEM CONTROL PANEL - INDEPENDENT
SYMBOL	DESCRIPTION																																																																																																													
	LIGHTING																																																																																																													
	SURFACE LIGHT																																																																																																													
	RECESSED LIGHT (TYPE DENOTED)																																																																																																													
	SUSPENDED OR PENDANT LIGHT																																																																																																													
	RECESSED DOWNLIGHT (WALL WASH)																																																																																																													
	SUSPENDED RING LIGHT																																																																																																													
	STRIP LIGHT (TYPE DENOTED)																																																																																																													
	BOLLARD																																																																																																													
	EMERGENCY BATTERY LIGHT (TYPE DENOTED)																																																																																																													
	EMERGENCY LIGHT - REMOTE HEAD																																																																																																													
	EXIT LIGHT																																																																																																													
	EXIT LIGHT C/W REMOTE HEAD																																																																																																													
	LIGHT FIXTURE ON (EM) LIFE SAFETY BRANCH																																																																																																													
	LIGHT FIXTURE ON (EM) CRITICAL BRANCH																																																																																																													
	SINGLE POLE SW																																																																																																													
	2 POLE SINGLE THROW SW																																																																																																													
	SINGLE RECEPT																																																																																																													
SYMBOL	DESCRIPTION																																																																																																													
	DUPLEX RECEPT																																																																																																													
	RECEPT ON DROP CORD (DUPLEX SHOWN)																																																																																																													
	RECEPT ON CORD REEL (DUPLEX SHOWN)																																																																																																													
	SPLIT DUPLEX RECEPT																																																																																																													
	RECEPT ON EMERGENCY CKT (DUPLEX SHOWN)																																																																																																													
	RECEPT C/W WET LOCATION COVERPLATE (DUPLEX SHOWN)																																																																																																													
	RECEPT C/W INTEGRAL GFI (DUPLEX SHOWN)																																																																																																													
	RECEPT C/W NEMA 5-20R CONFIG																																																																																																													
	RECEPT MTD IN FLOOR (DUPLEX SHOWN)																																																																																																													
	RECEPT MTD IN MILLWORK (DUPLEX SHOWN)																																																																																																													
	JUNCTION BOX																																																																																																													
	PULL BOX																																																																																																													
	GROUND ROD																																																																																																													
	GROUND CONNECTION TO STEEL OR STRUCTURE																																																																																																													
	GROUND CONNECTION - EXOTHERMIC WELD																																																																																																													
	BUS CONNECTION																																																																																																													
	TELECOM GROUND BUS																																																																																																													
	STATIC GROUND RECEPT (TYPE DENOTED)																																																																																																													
SYMBOL	DESCRIPTION																																																																																																													
	SPECIAL CONNECTION (SEE SCHEDULE)																																																																																																													
	MOTOR (SEE SCHEDULE)																																																																																																													
	POWER OR DISTRIBUTION PANEL																																																																																																													
	SPECIAL CABINET (TYPE DENOTED)																																																																																																													
<b>GENERAL ELECTRIC</b>																																																																																																														
	LIGHT SYMBOL INDICATES EXISTING																																																																																																													
	DASHED SYMBOL INDICATES REMOVED																																																																																																													
	KEYPAD																																																																																																													
	SECURITY NOTIFICATION APPLIANCE																																																																																																													
	VIBRATION DETECTION (TYPE DENOTED)																																																																																																													
	DURESS PUSHBUTTON - RECESSED																																																																																																													
	DURESS ALERT LIGHT																																																																																																													
	DURESS RANGE EXTENDER																																																																																																													
	ACCESS CONTROL ENCLOSURE																																																																																																													
	INTRUSION DETECTION SYSTEM CONTROL PANEL																																																																																																													
	INTRUSION DETECTION SYSTEM CONTROL PANEL - INDEPENDENT																																																																																																													

# SPECIFIC CODE NOTES

---

FIRE PROTECTION REQUIREMENTS

A. PENETRATIONS IN WALLS REQUIRING PROTECTED OPENINGS MUST BE FIRESTOPPED WITH AN APPROVED MATERIAL.

1. CONDUITS MAY PENETRATE WALLS OR PARTITIONS, PROVIDED THEY ARE FIRE-STOPPED.
2. OUTLET BOXES THAT PENETRATE OPPOSITE SIDES OF A WALL ASSEMBLY SHALL BE OFFSET WHERE NECESSARY TO MAINTAIN THE INTEGRITY OF THE FIRE SEPARATION.

# ELECTRICAL DRAWINGS

**SYMBOLS & ABBREVIATIONS**

E0.1 ELECTRICAL SYMBOLS AND ABBREVIATIONS

**DEMOLITION PLANS**

ED2.1 MAIN FLOOR - DEMOLITION PLAN

ED2.2 BASEMENT - DEMOLITION PLAN

**POWER PLANS**

ELP2.1 MAIN FLOOR - LIGHTING & POWER PLAN

ELP2.2 BASEMENT - LIGHTING & POWER PLAN

**SCHEDULES**

E6.1 ELECTRICAL SCHEDULES

# ELECTRICAL SYMBOL NOTES

NL  
AL-20

LIGHTING FIXTURES. "NL" INDICATES THAT THE LIGHTING FIXTURE IS ON A NIGHT LIGHT BRANCH. THE LIGHTING FIXTURE TYPE IS INDICATED BY UPPER CASE LETTERS AND NUMBERS. THE CIRCUIT DESIGNATION IS INDICATED BY LETTERS AND NUMBERS SEPARATED BY A DASH. THE SWITCH DESIGNATION IS INDICATED BY A LOWER CASE LETTER. EXAMPLE: THE LIGHTING FIXTURE SHOWN HAS THE FOLLOWING PROPERTIES: IT IS ON A NIGHT LIGHT BRANCH; ITS LIGHTING FIXTURE TYPE IS "RL01"; IT IS CONNECTED TO PANEL A, CIRCUIT 12; AND IT IS CONTROLLED BY SWITCH "D".

EXIT LIGHTS. STEM INDICATES WALL MOUNTING; NO STEM INDICATES CEILING MOUNTING. SHADED AREA INDICATES ILLUMINATED FACES. ARROW INDICATES DIRECTIONAL ARROW ON ILLUMINATED FACES. THE SIGNAGE TYPE IS INDICATED BY UPPER CASE LETTERS AND NUMBERS PRECEDING THE "I". THE ASSOCIATED BATTERY BANK IS INDICATED BY UPPER CASE LETTERS AND NUMBERS FOLLOWING THE "I". THE AC CIRCUIT DESIGNATION IS INDICATED BY A NUMBER. EXAMPLE: THE WALL MOUNTED LIGHT TYPE "EXT" WITH SINGLE FACE AND DIRECTIONAL ARROW IS CONNECTED TO BATTERY BANK "BUT" AND AC CIRCUIT 14 FROM PANEL A.

DEVICES. THE CIRCUIT DESIGNATION IS INDICATED BY A NUMBER. EXAMPLE: SPLIT DUPLEX RECEPTACLE IS CONNECTED TO PANEL A, CIRCUIT 16 AND ONE RECEPTACLE OUTLET IS CONTROLLED BY A SWITCH.

THE CONTROL DEVICE DESIGNATION IS INDICATED BY A LOWER CASE LETTER. EXAMPLE: SINGLE POLE SWITCH "G" TO CONTROL LIGHTING FIXTURES INDICATED BY "I".

SPECIAL CONNECTIONS. THE EQUIPMENT IS INDICATED BY THE TAG. SEE THE MOTOR AND EQUIPMENT SCHEDULE FOR THE LOAD DESCRIPTION AND TYPE OF CONNECTION. THE CIRCUIT DESIGNATION IS INDICATED BY A NUMBER(S) ADJACENT TO THE SYMBOL. EXAMPLE: EQUIPMENT NO. 1, 3 PHASE CONNECTION TO PANEL A, CIRCUITS 1, 3, 5.

KEYNOTE. SEE THE KEYED NOTES ON THAT SHEET FOR THE NOTE NUMBER INDICATED. (TYP) INDICATES THAT THE NOTE IS TYPICAL OF THE APPLICATION.

#10

#12

#14

#16

#18

#20

#22

#24

#26

#28

#30

#32

#34

#36

#38

#40

#42

#44

#46

#48

#50

#52

#54

#56

#58

#60

#62

#64

#66

#68

#70

#72

#74

#76

#78

#80

#82

#84

#86

#88

#90

#92

#94

#96

#98

#100

#102

#104

#106

#108

#110

#112

#114

#116

#118

#120

#122

#124

#126

#128

#130

#132

#134

#136

#138

#140

#142

#144

#146

#148

#150

#152

#154

#156

#158

#160

#162

<

ELECTRICAL ABBREVIATIONS LIST					
1P	1 POLE (2P, 3P, 4P, ETC.)	FZ	FREEZER	PDSCP	POOL DROWING SYSTEM CONTROL PANEL
A	AMPERE	GA	GAUGE	PH	PHASE
AF	AMP FRAME	GALV	GALVANIZED	PNL	PANEL
AFB	ABOVE FINISHED FLOOR	GC	GENERAL CONTRACTOR	PVC	POLYVINYL CHLORIDE (CONDUIT)
AFG	ABOVE FINISHED GRADE	GFI	GROUND FAULT CIRCUIT INTERRUPTER	PWR	POWER
AFI	ARC FAULT CIRCUIT INTERRUPTER	GND	GROUND	R	RELOCATED
ALT	ALTERNATE			RCPT	RECEPTACLE
AMP	AMPERE	HORIZ	HORIZONTAL	REQD	REQUIRED
ANNUN	ANNUNCIATOR	HP	HORSEPOWER		
AS	AMP SWITCH	HT	HEIGHT	SC	SURFACE CONDUIT
AT	AMP TRIP			SHT	SHEET
ATS	AUTOMATIC TRANSFER SWITCH	HTG	HEATING	SPEC	SPECIFICATION
AUX	AUXILIARY	HTR	HEATER	SP	SPARE
		HVAC	HEATING, VENTILATING AND AIR CONDITIONING	SR	SURFACE RACEWAY
BATT	BATTERY			SS	STAINLESS STEEL
BLDG	BUILDING	IDSCP	INTRUSION DETECTION SYSTEM CONTROL PANEL	STD	STANDARD
C	CONDUIT			SURF	SURFACE MOUNTED
CB	CIRCUIT BREAKER			SW	SWITCH
CKT	CIRCUIT	J-BOX	JUNCTION BOX	SYM	SYMMETRICAL
CL	CENTER LINE	KW	KILOWATT	SYS	SYSTEM
CLG	CEILING			TR	TAMPER RESISTANT
COMB	COMBINATION	LOC	LOCATE OR LOCATION	TYP	TYPICAL
CONN	CONNECTION	LT	LIGHT	UG	UNDERGROUND
CONT	CONTINUATION OR CONTINUOUS	LTG	LIGHTING	UH	UNIT HEATER
CONTR	CONTRACTOR			UTIL	UTILITY
CT	CURRENT TRANSFORMER	MAX	MAXIMUM	V	VOLT
CTR	CENTER	MDC	MAIN DISTRIBUTION CENTER	VA	VOLT-AMPERES
CU	COPPER	MDP	MAIN DISTRIBUTION PANEL	VERT	VERTICAL
C/W	COMPLETE WITH	MFR	MANUFACTURER	VFD	VARIABLE FREQUENCY DRIVE
		MISC	MISCELLANEOUS	W	WATT
DET	DETAIL	MLO	MAIN LUGS ONLY	W/	WITH
DIA	DIAMETER	MT	MOUNT	W/O	WITHOUT
DISC	DISCONNECT	MTR	MOTOR, MOTORIZED	WP	WEATHERPROOF
DIST	DISTRIBUTION				
		NEC	NATIONAL ELECTRICAL CODE		
EC	ELECTRICAL CONTRACTOR	NEMA	NATIONAL ELECTRICAL CODE MANUFACTURER'S ASSOCIATION	XFMR	TRANSFORMER
EM	EMERGENCY			XFR	TRANSFER
EQUIP	EQUIPMENT	NIC	NOT IN CONTRACT		
EXIST	EXISTING	NTS	NOT TO SCALE	∠	ANGLE
				@	AT
FA	FIRE ALARM			Δ	DELTA
FACP	FIRE ALARM CONTROL PANEL			'	FEET
FLR	FLOOR	OH	OVERHEAD	"	INCHES
FU	FUSE	OHD	OVERHEAD DOOR	#	NUMBER
		PB	PULL BOX OR PUSHBUTTON	Ø	PHASE

THE GENERAL NOTES AS DESCRIBED HEREIN APPLY TO ALL DRAWINGS IN THIS PACKAGE WHERE APPLICABLE.

A. REFER TO ARCHITECTURAL FLOOR PLANS, ELEVATIONS AND SECTIONS, INCLUDING ALL ASSOCIATED DETAILS AND SHOP DRAWINGS FOR COORDINATION OF ELECTRICAL DEVICE LOCATIONS, METHOD OF INSTALLATION & MOUNTING HEIGHTS. ARCHITECTURAL FLOOR PLANS, ELEVATIONS AND SECTIONS TAKE PRECEDENCE OVER LOCATIONS SHOWN ON ELECTRICAL DRAWINGS.

B. EMPLY CONDUIT SHALL BE C/W FULL WIRE AND PLASTIC BUSHING.

C. REFER TO ARCHITECTURAL DRAWINGS AND SPECIFICATIONS FOR PHASES OF DEMOLITION AND CONSTRUCTION. COORDINATE WITH GENERAL CONTRACTOR.

D. EQUIPMENT SHUTDOWN AND THE INTERRUPTION OF ANY EXISTING SERVICES SHALL BE COORDINATED IN ADVANCE WITH THE CONTRACT ADMINISTRATOR AND THE GENERAL CONTRACTOR.

E. ALL LIFE-SAFETY SYSTEMS SHALL BE MAINTAINED AND OPERABLE AT ALL TIMES DURING CONSTRUCTION.

F. CONTRACTOR SHALL VERIFY ALL EXISTING SYSTEMS TO BE IN WORKING CONDITION PRIOR TO CARRYING OUT MODIFICATIONS. WHERE EXISTING SYSTEMS ARE NOT OPERABLE, NOTIFY THE CONTRACT ADMINISTRATOR FROM THE RENOVATION DRAWING KEY NOTES FOR FURTHER REQUIREMENTS.

G. AS INDICATED IN CONTRACT DOCUMENTS, UNLESS NOTED OTHERWISE, THE TERM "DEMOLISH" SHALL INCLUDE THE COMPLETE REMOVAL OF THE EXISTING IDENTIFIED ITEM, INCLUDING ALL ASSOCIATED CONDUIT AND JUNCTION BOXES BACK TO LAST REMAINING DEVICE OR SOURCE. CIRCUITS FREED UP FROM DEMOLISHED ELECTRICAL, SHALL BECOME SPARE. REFER TO THE RENOVATION DRAWING KEY NOTES FOR FURTHER REQUIREMENTS.

H. AS INDICATED IN CONTRACT DOCUMENTS, UNLESS NOTED OTHERWISE, THE TERM "RELOCATE" SHALL INCLUDE THE COMPLETE REMOVAL & REPLACEMENT OF THE EXISTING ITEM IDENTIFIED IN ITS CURRENT LOCATION, WITH A NEW ITEM, UTILIZING THE SAME OR OUTLET BEING RELOCATED TO THE RENOVATION DRAWING KEY NOTES FOR FURTHER REQUIREMENTS.

I. AS INDICATED IN CONTRACT DOCUMENTS, UNLESS NOTED OTHERWISE, THE TERM "RELOCATE" SHALL INCLUDE THE COMPLETE RELOCATION OF THE EXISTING ITEM IDENTIFIED IN ITS CURRENT LOCATION ON THE RENOVATION DRAWING KEY NOTES FOR FURTHER REQUIREMENTS. INDICATED ON THE RENOVATION DRAWINGS, INCLUDE ALL LABOUR AND MATERIALS TO REROUT/EXTEND/REFEED THE EXISTING CIRCUITRY AS REQUIRED TO ACCOMMODATE THE RELOCATION. REFER TO THE RENOVATION DRAWING KEY NOTES FOR FURTHER REQUIREMENTS.

J. SITE CONFIRM ANY ELECTRICAL WITHIN AREAS OF RENOVATION REQUIRED FOR RELOCATION TO ACCOMMODATE THE RENOVATION.

K. PROVIDE WIRE AND CONDUIT AS REQUIRED FOR CONTINUITY OF ANY FEEDERS OR CIRCUITS WHICH ROUTS OUTSIDE THE DEMOLITION AREA THAT SERVES ANY ELECTRICAL EQUIPMENT OR DEVICES TO REMAIN AFTER DEMOLITION. MODIFY OR REPLACE AS REQUIRED.

L. PROVIDE CONDUIT AND/OR COMMUNICATIONS/DATA WIRING AS NECESSARY FOR CONTINUITY OF ANY COMMUNICATIONS/DATA SYSTEMS ORIGINATING WITHIN THE DEMOLITION AREA TO REMAIN AFTER COMMUNICATIONS/DATA EQUIPMENT OR DEVICES TO REMAIN AFTER DEMOLITION. MODIFY OR REPLACE AS REQUIRED.

M. PROVIDE BLANK COVER PLATES OVER ALL EXISTING UNUSED OPENINGS.

N. DRAWING RECORDS OF THE EXISTING FLOOR PLANS AND SECTION COMPLIANCE WITH THE REQUIREMENTS SUBMITTED BY THE CITY AND FROM SITE OBSERVATIONS AS NOTED BY THE CONTRACTOR ADMINISTRATOR. THE ACCURACY OF THESE DRAWING RECORDS IS LIMITED TO THE BEST OF KNOWLEDGE OF THE EXISTING CONDITIONS.

O. DEMOLISH ALL ELECTRICAL DEVICES IN WALLS, FLOORS OR CEILINGS TO BE DEMOLISHED. CONFIRM EXTENT OF DEMOLITION WITH ALL DISCIPLINE DRAWINGS.

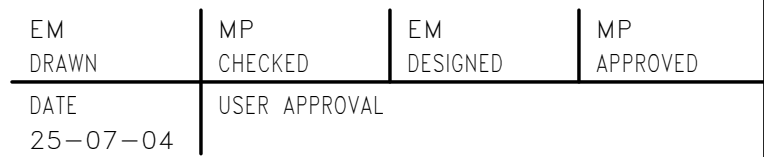
P. REROUT/EXTEND/REFEED THE EXISTING CIRCUITRY AS REQUIRED TO MAINTAIN EXISTING SYSTEMS NOT INDICATED TO BE REMOVED.

Q. REMOVE ANY UNUSED OR ABANDONED WIRING AND CONDUIT WITHIN RENOVATION AREA, INCLUDING BRANCH CIRCUIT WIRING, VOICE/DATA CABLEING AND SYSTEMS CABLEING TO SOURCE OF SUPPLY.

R. REMOVE ANY EXISTING WIRING AND CONDUIT TO BE RE-USED, VERIFY EXISTING CONDITIONS. MODIFY AND SUPPLEMENT EXISTING FASTENING AND SUPPORT TO MEET CODE REQUIREMENTS.

S. CONTRACTOR SHALL BE RESPONSIBLE WHERE POSSIBLE, UTILIZE CRAWLSPACE AND/OR ACCESSIBLE CEILING SPACE TO RUN NEW WIRING AS REQUIRED AND FISH THROUGH WALLS/CEILING.

T. WHERE EXISTING WALLS ARE TO BE OPENED FOR INSTALLATION OF NEW WIRING, COORDINATE WITH GENERAL CONTRACTOR ROUTING OF SAME. ARRANGE AND PROVIDE FOR ALL CUTTING/REPAIR/PATCHING AS REQUIRED.

SEAL

PROJECT 3-65 GARRY STREET, R3C 4K4  
SEVEN OAKS POOL

SEVEN OAKS POOL

SHEET TITLE

DRAWING SHEET SIZE: A1 (594x841) PLOT 1:1