



This is a print of a document that has been electronically authenticated with technology authorized by the Engineers Geoscientists Manitoba. The original is in electronic form.



400 - 136 Market Avenue  
Winnipeg, MB R3B 0P4  
T 204 453 1080

0	Issued For Construction	JS	25-07-04
		/M	-04
		P	
No.	REVISION/DESCRIPTION	BY	DATE

SEAL



KL DRAWN	JS CHECKED	JS DESIGNED	Approver APPROVED
DATE 25-07-04	USER APPROVAL		

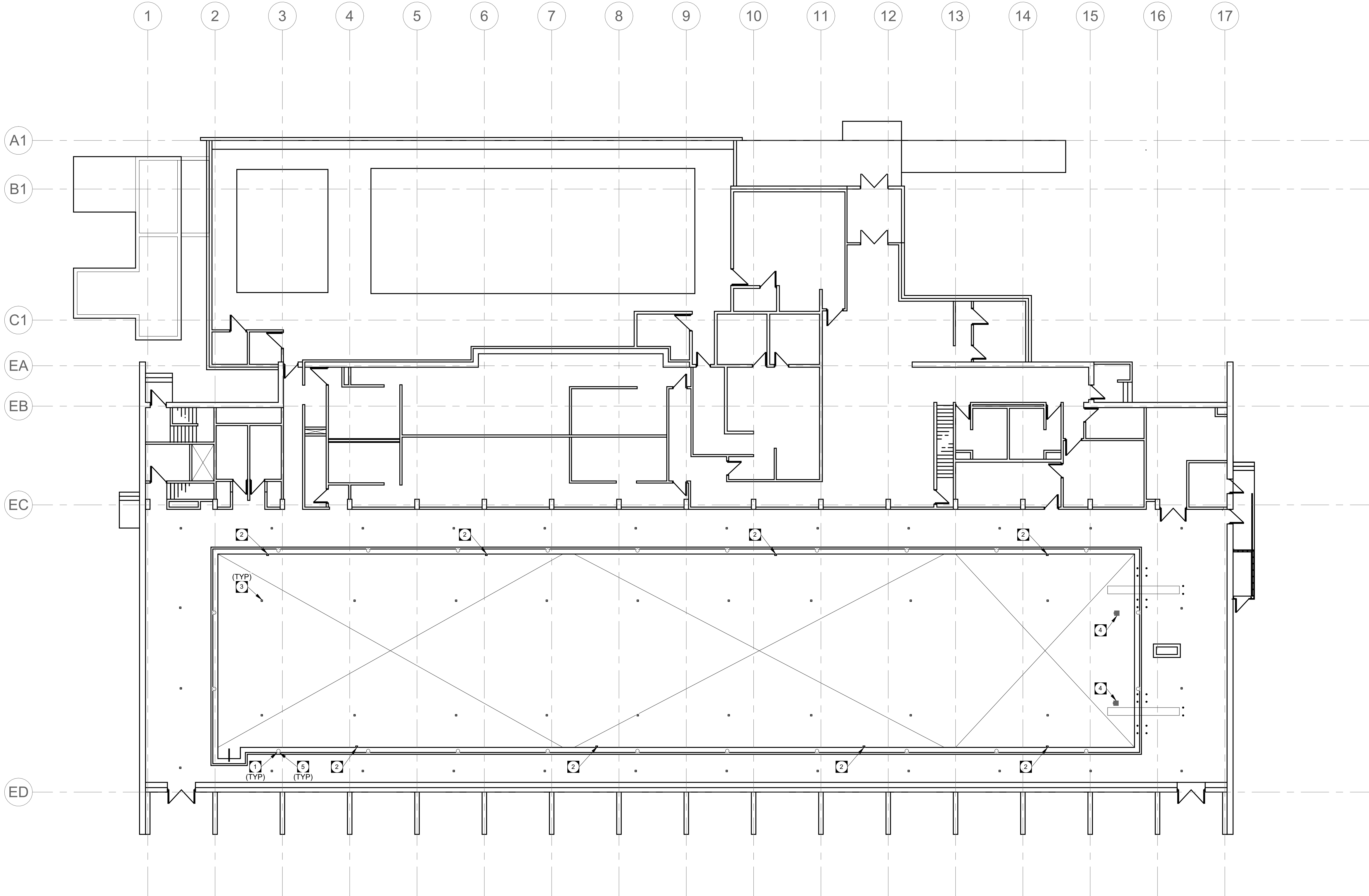
**Winnipeg** THE CITY OF WINNIPEG  
ASSETS & PROJECT MANAGEMENT  
DEPARTMENT  
MUNICIPAL ACCOMMODATIONS DIVISION  
3-65 GARRY STREET, R3C 4K4

PROJECT  
**SEVEN OAKS POOL**

444 ADSUM DRIVE  
SHEET TITLE  
**MAIN FLOOR - PLUMBING PLAN**

SCALE 1:150	PROJECT No: 2023-0220	SHEET No: MP2.1
----------------	--------------------------	--------------------

DRAWING SHEET SIZE: A1 (594x841) PLOT 1:1



**2 MAIN FLOOR PLAN - PLUMBING**  
MP2.1 SCALE: 1 : 150

**KEY NOTES**

- 1 PROVIDE NEW SKIMMER FITTINGS AND GRATE AT EACH EXISTING LOCATION, CONNECT TO EXISTING PIPING WITHIN CRAWLSPACE. COORDINATE INSTALLATION, CONNECTION, MOUNTING WITHIN STRUCTURAL, TYPICAL.
- 2 PROVIDE NEW VACUUM PORT FITTING AT ALL EXISTING LOCATIONS. CONNECT TO EXISTING PIPING WITHIN CRAWLSPACE. COORDINATE INSTALLATION WITH STRUCTURAL, TYPICAL.
- 3 PROVIDE NEW POOL RETURN DRAIN FITTINGS AT EXISTING LOCATIONS WITHIN POOL FLOOR. COORDINATE WITH STRUCTURAL, TYPICAL.
- 4 PROVIDE NEW MAIN DRAINS AND COVERS AT EXISTING LOCATIONS. CONNECT TO EXISTING PIPING. MAIN DRAINS SHALL BE VGB COMPLAINT. COORDINATE INSTALLATION, MOUNTING HARDWARE AND CONCRETE WORK WITH STRUCTURAL. MAIN DRAIN COVER SHALL BE LAWSON AQUATICS SUPERFLOW DRAIN COVER 18"X18", VGB COMPLAINT, 183 SQ.IN. OPEN AREA, 816 GPM.
- 5 NEW SKIMMER GRATES SHALL BE CUSTOM FABRICATED BY COMMERCIAL POOL & REC PRODUCTS. GRATES SHALL BE BENT STAINLESS STEEL TO MATCH NEW GUTTER PROFILE. REFER TO GUTTER DETAIL ON STRUCTURAL DRAWINGS.

**VELOCITY CALCULATION**

THE VELOCITY THROUGH ANY INLET ORIFICE SHALL BE IN RANGE OF 6-20 FEET PER SECOND. THE VELOCITY THROUGH ANY MAIN DRAIN SHALL NOT EXCEED 1.5 FEET PER SECOND. POOL SYSTEM FLOW BASED ON 6 HOUR TURN AROUND.

MAIN DRAINS: 18"X18" SWIMMING POOL MAIN DRAINS: 183 SQ.IN. (1.27 SF.)

QUANTITY: 2

MAIN DRAIN (EA.): Q = 1.31 FT<sup>3</sup>/S, A = 1.27 FT<sup>2</sup>, V = 1.03 FT/S

24 GUTTER DRAINS, DESIGN FLOW AT 49 GPM EA., 1172 GPM TOTAL

18 POOL FLOOR INLETS, 65 GPM EA., 1172 GPM TOTAL, 1.51 IN2 (0.15 FT<sup>2</sup>), 1-3/4 TURNS @ 1 PSI  
FLOOR INLETS (EA.): Q = 0.15 FT<sup>3</sup>/S, A = 0.0105 FT<sup>2</sup>, V = 13.83 FT/S