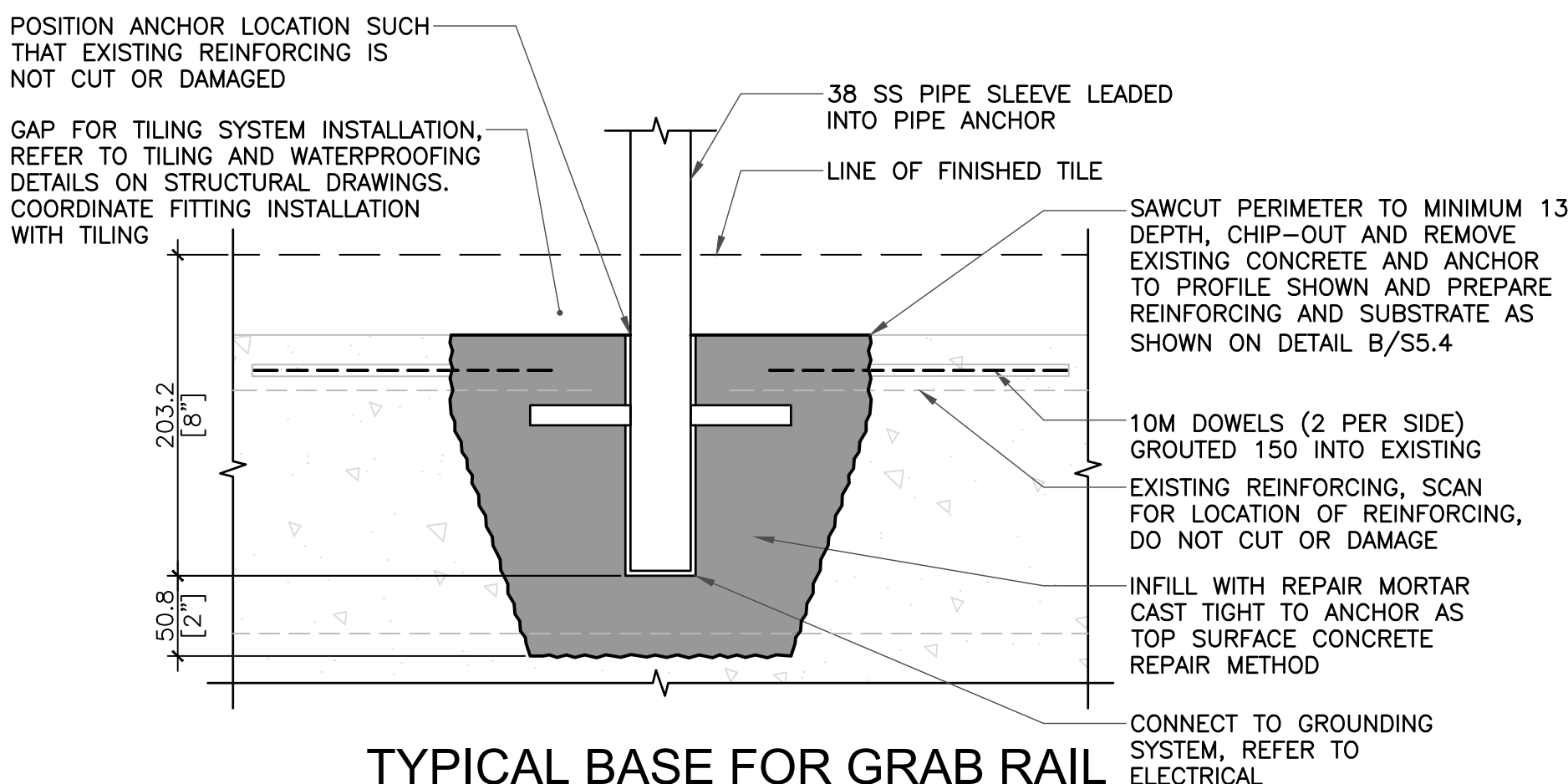
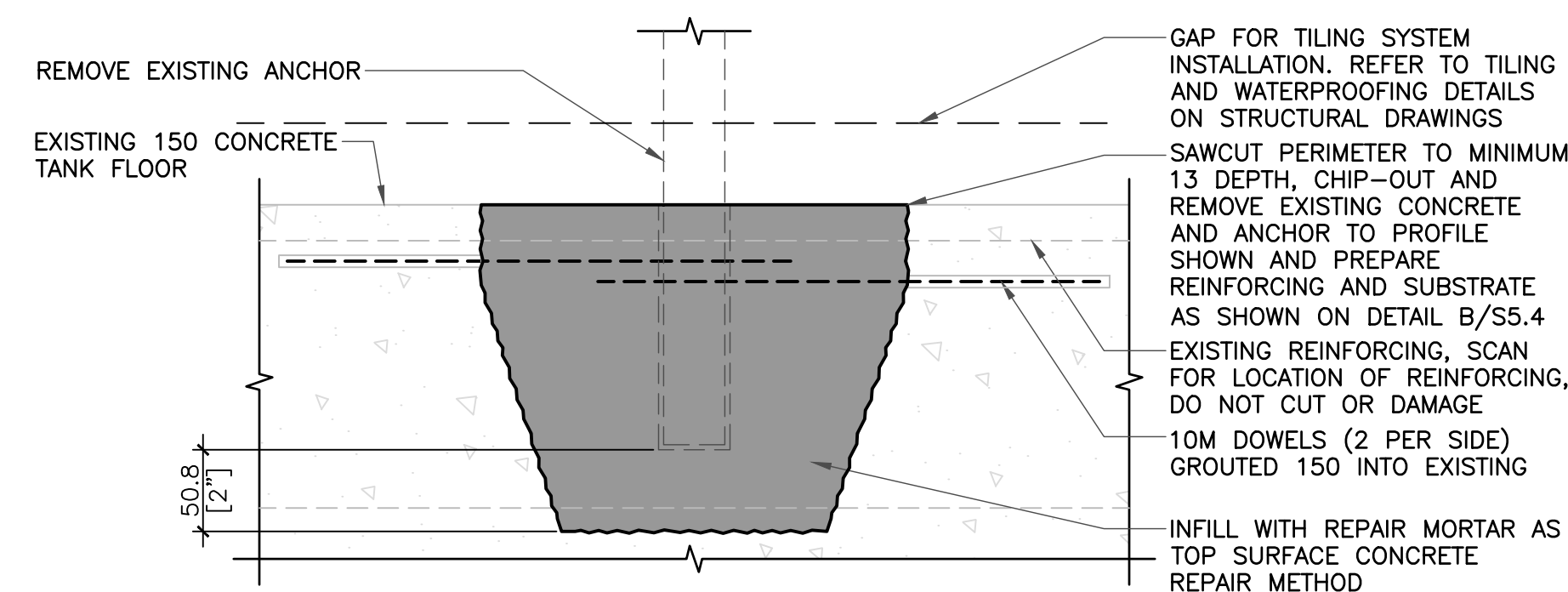


1 NOT USED  
- S5.1 1:4

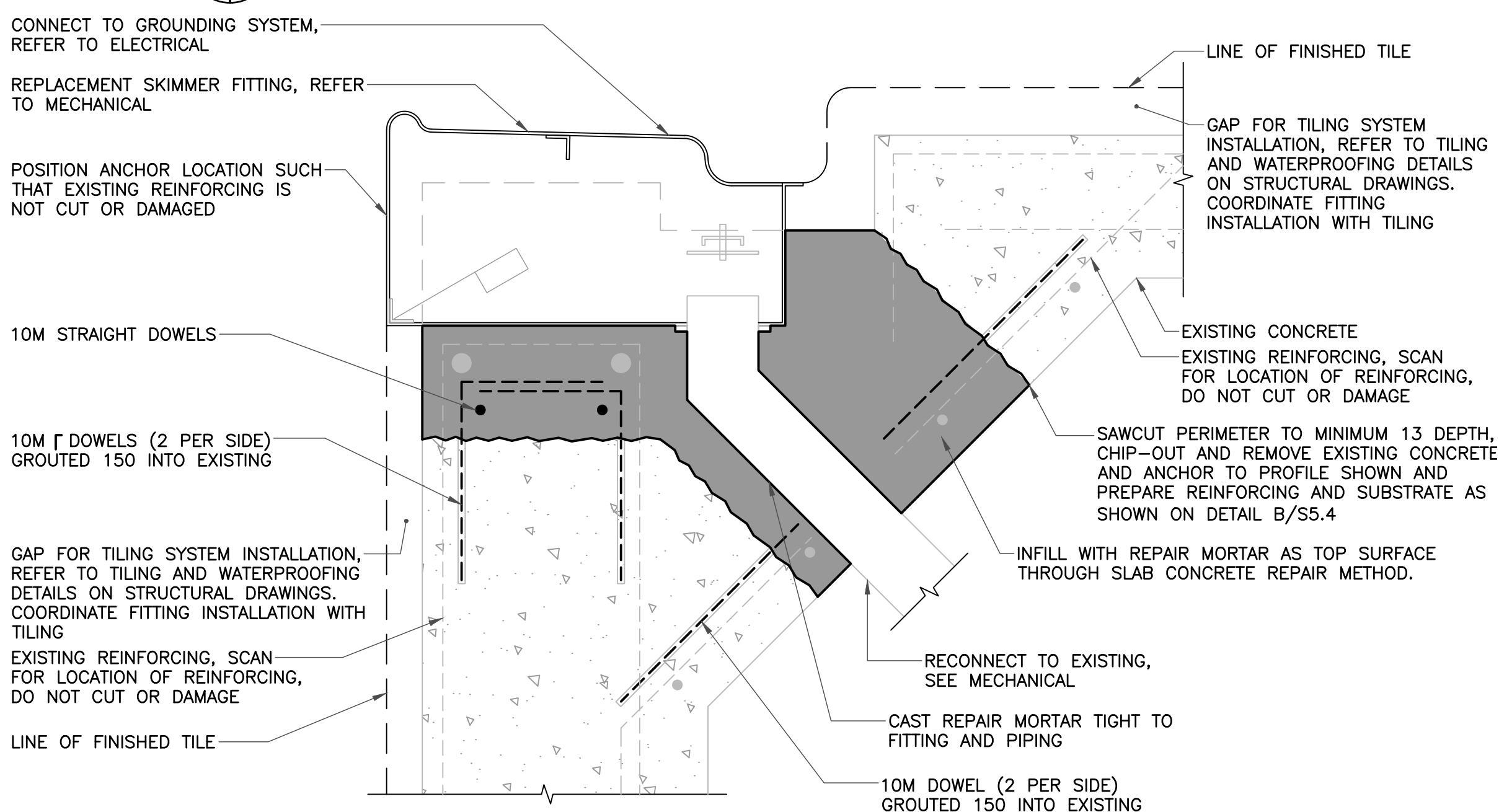


TYPICAL BASE FOR GRAB RAIL AND HANDRAIL DETAIL

4 S5.2 S5.1 1:4 (STIPULATED PRICE)

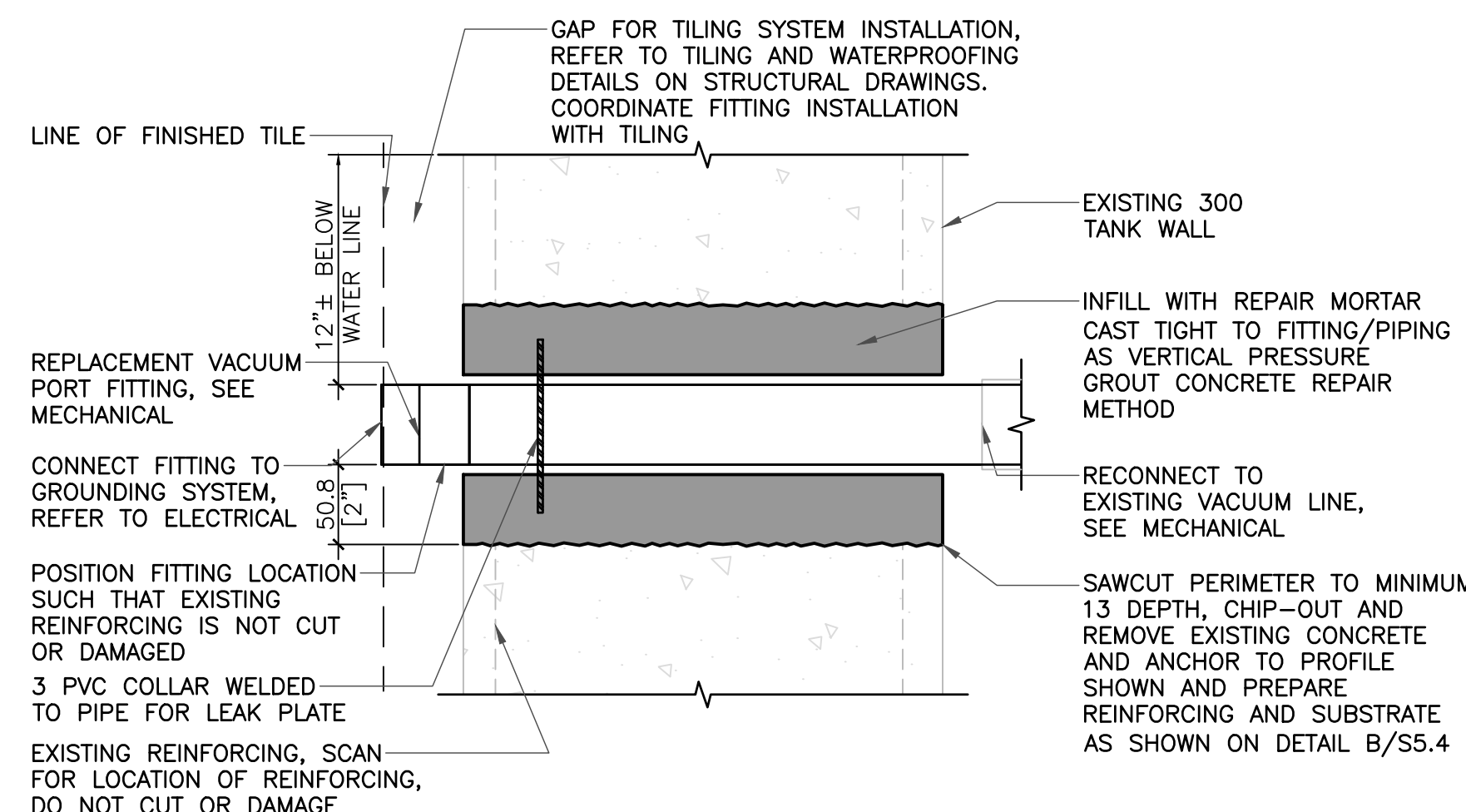


TYPICAL ABANDONED ANCHOR INFILL DETAIL  
(STIPULATED PRICE)

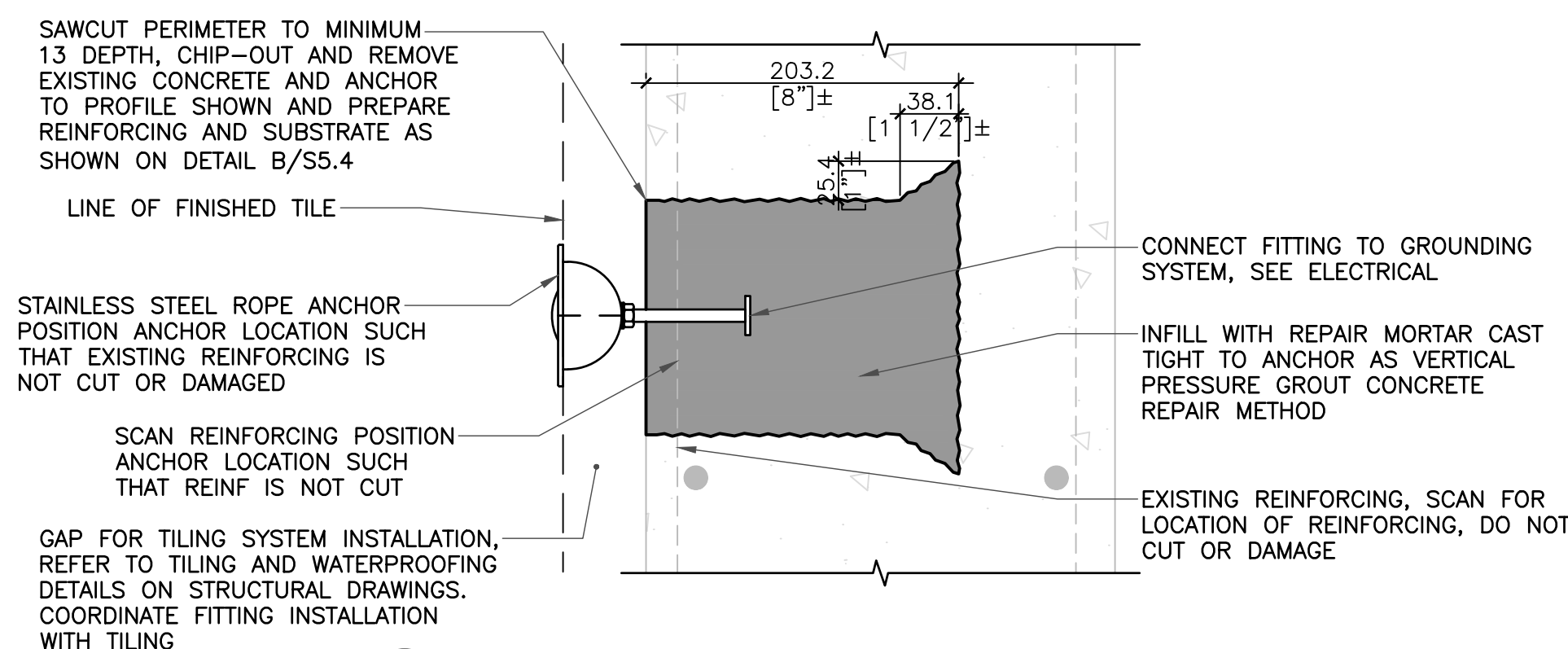


8 TYPICAL SKIMMER DETAIL  
(STIPULATED PRICE)

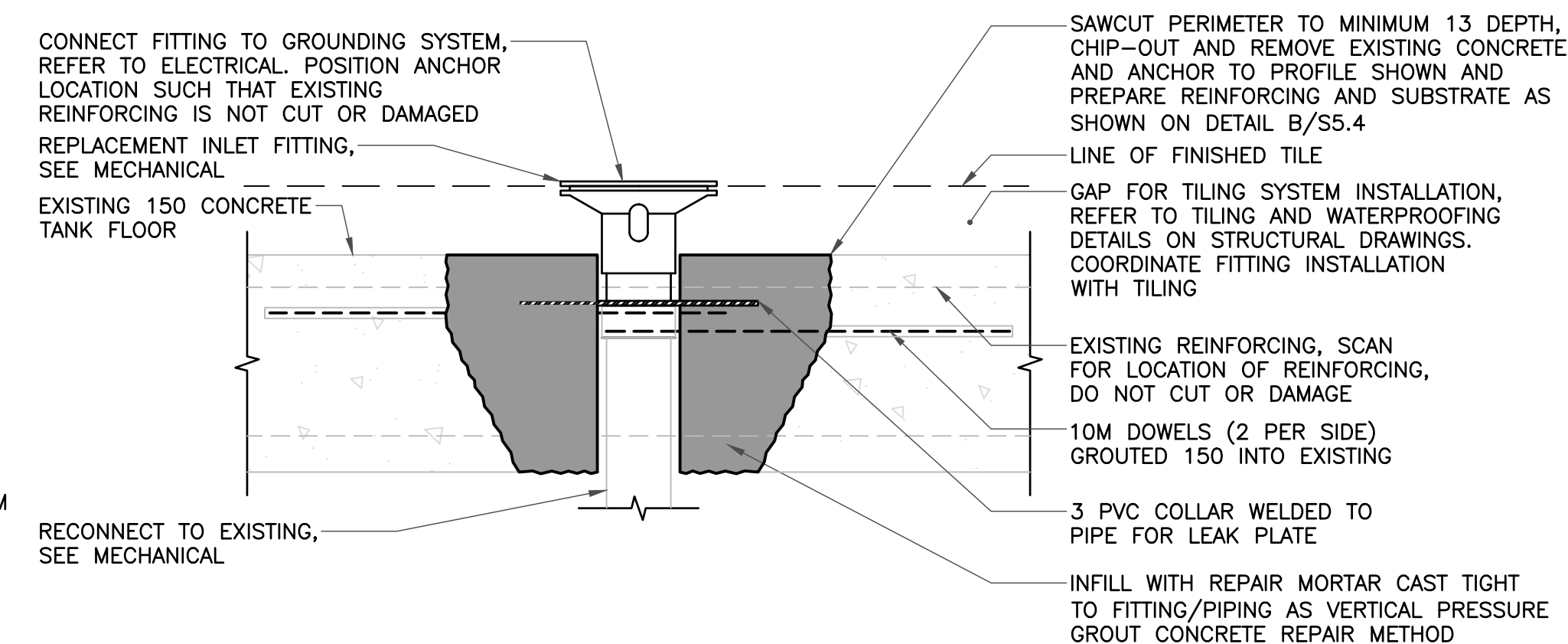
2 NOT USED  
- S5.1 1:4



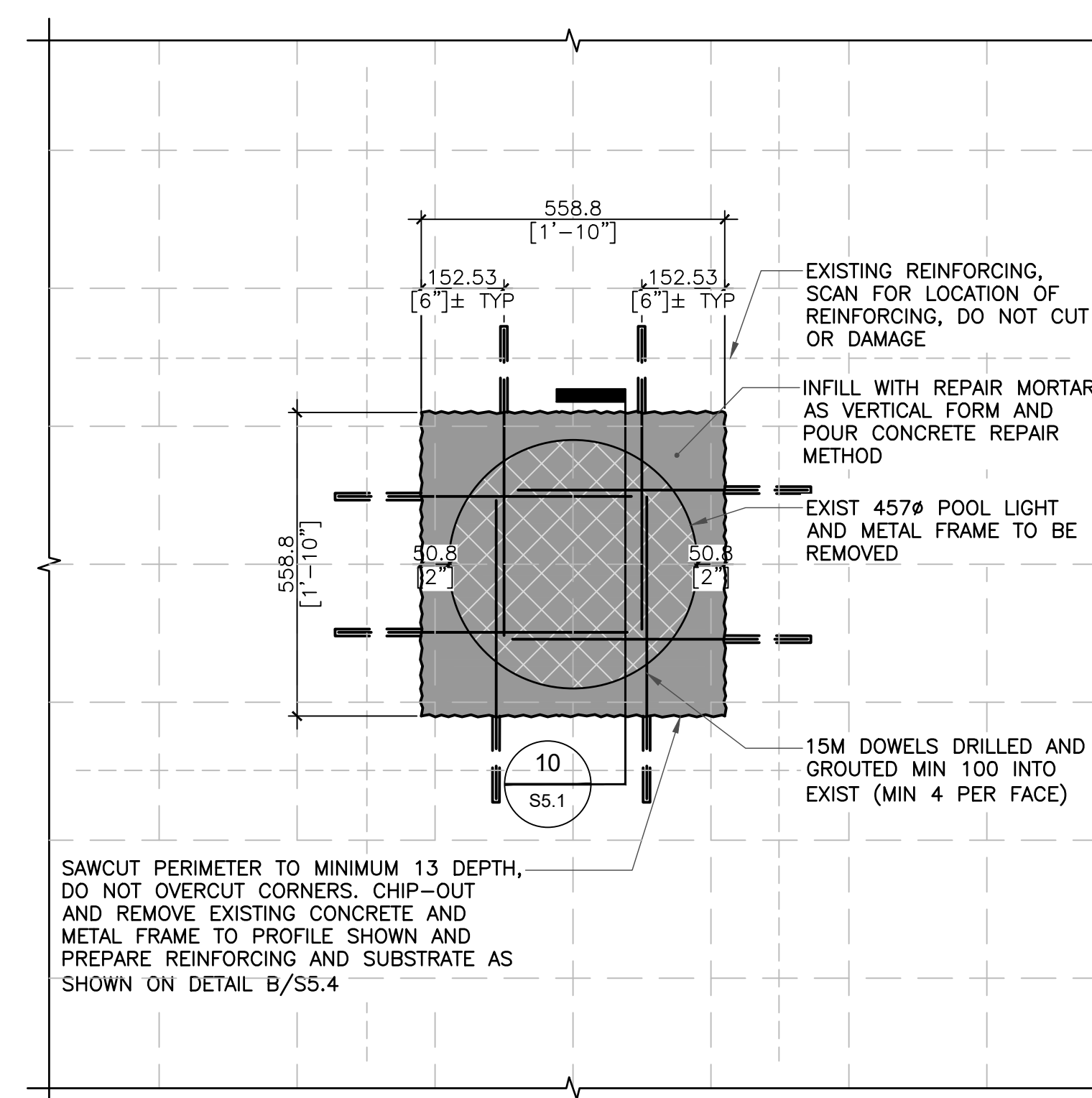
5 TYPICAL VACUUM PORT DETAIL  
(STIPULATED PRICE)



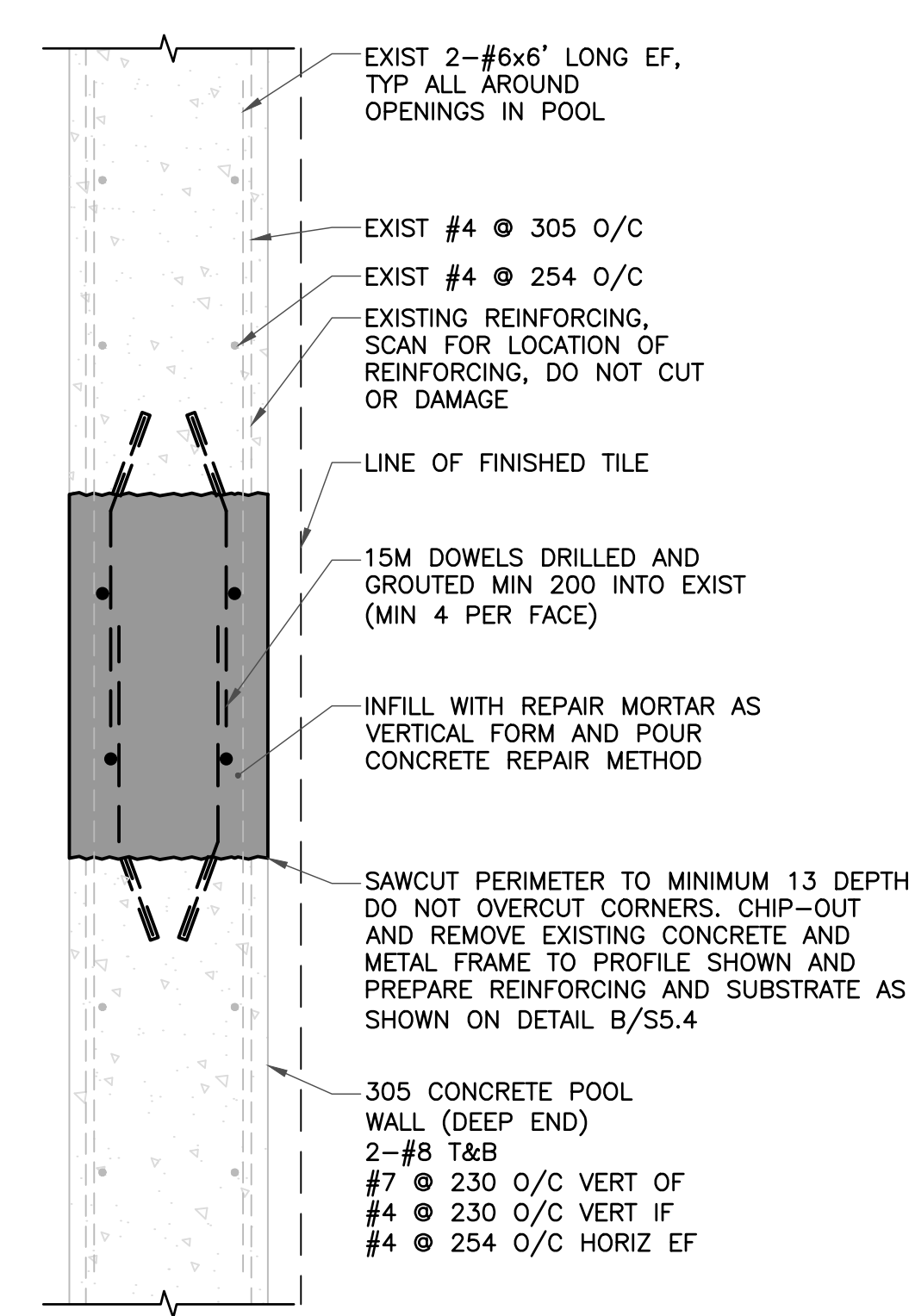
3 TYPICAL ROPE ANCHOR DETAIL  
(STIPULATED PRICE)



6 TYPICAL POOL INLET DETAIL  
(STIPULATED PRICE)



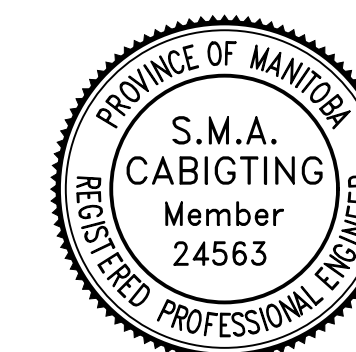
9 TYPICAL LIGHT INFILL ELEVATION  
(STIPULATED PRICE)



10 TYPICAL LIGHT INFILL SECTION  
(STIPULATED PRICE)

0	ISSUED FOR CONSTRUCTION	TRB	07-07 2025
No.	REVISION/DESCRIPTION	BY	DATE

SEAL



2025.07.07	TRB	ACG	TRB	TRB
DATE	DESIGNED	DRAWN	CHECKED	APPROVED

THE CITY OF WINNIPEG  
ASSETS & PROJECT MANAGEMENT  
DEPARTMENT  
MUNICIPAL ACCOMMODATIONS DIVISION  
3-65 GARRY STREET, R3C 4K4

PROJECT  
SEVEN OAKS POOL  
POOL RENEWAL

444 ADSUM DRIVE

SHEET TITLE

STRUCTURAL DETAILS

SCALE	PROJECT No:	SHEET No:
AS SHOWN	2023-0220	S5.1

DRAWING SHEET SIZE: A1 (594x841) PLOT 1:1