

MATERIALS

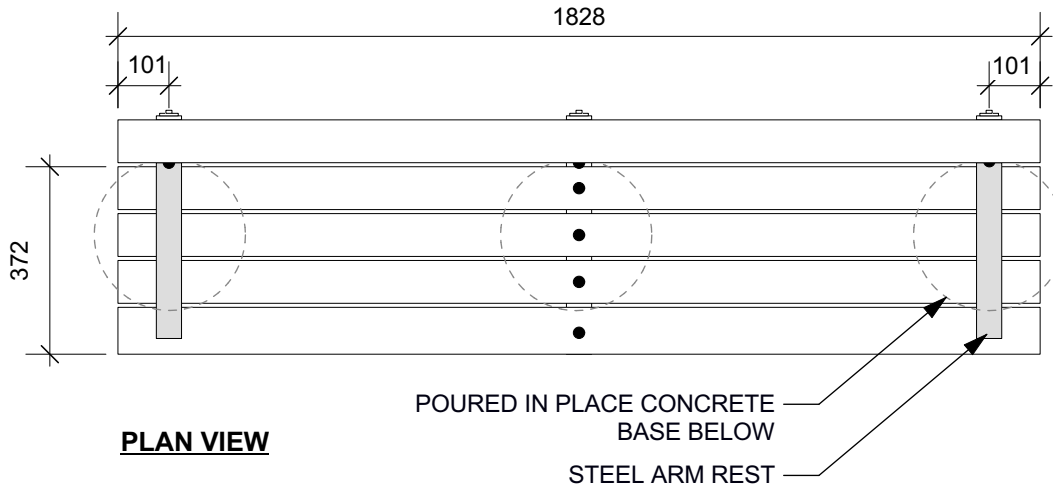
- 1. WOOD SLATS: 89x89mm COMPOSITE BOARDS W/ CEDAR TONE FINISH
- 2. FRAME: WELDED STEEL W/ GALVANIZED OR BLACK FINISH

Drawing Title:

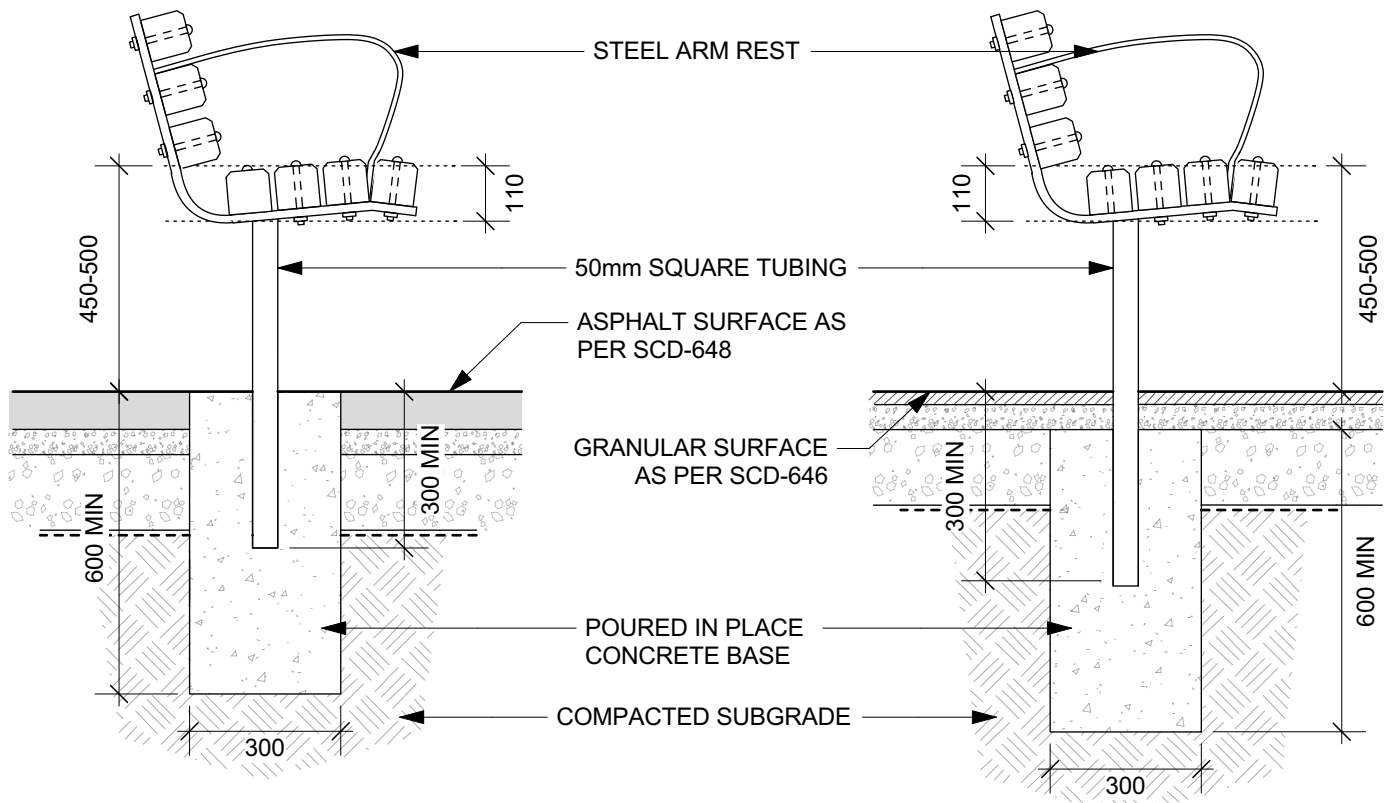
TACHE BENCH COMPOSITE WITH ARMS

Drawing No:

SCD-121A



PLAN VIEW



SECTION - ASPHALT

SECTION - GRANULAR

DIMENSIONS SHOWN ARE IN MILLIMETRES UNLESS OTHERWISE SPECIFIED

REVISION: 5
DATE: April 2024
SCALE: NTS
DRAWN BY: MG

The City of Winnipeg
Planning, Property and Development Department
Planning and Land Use Division
Unit 15 - 30 Fort Street, Winnipeg, MB, R3C 4X5

