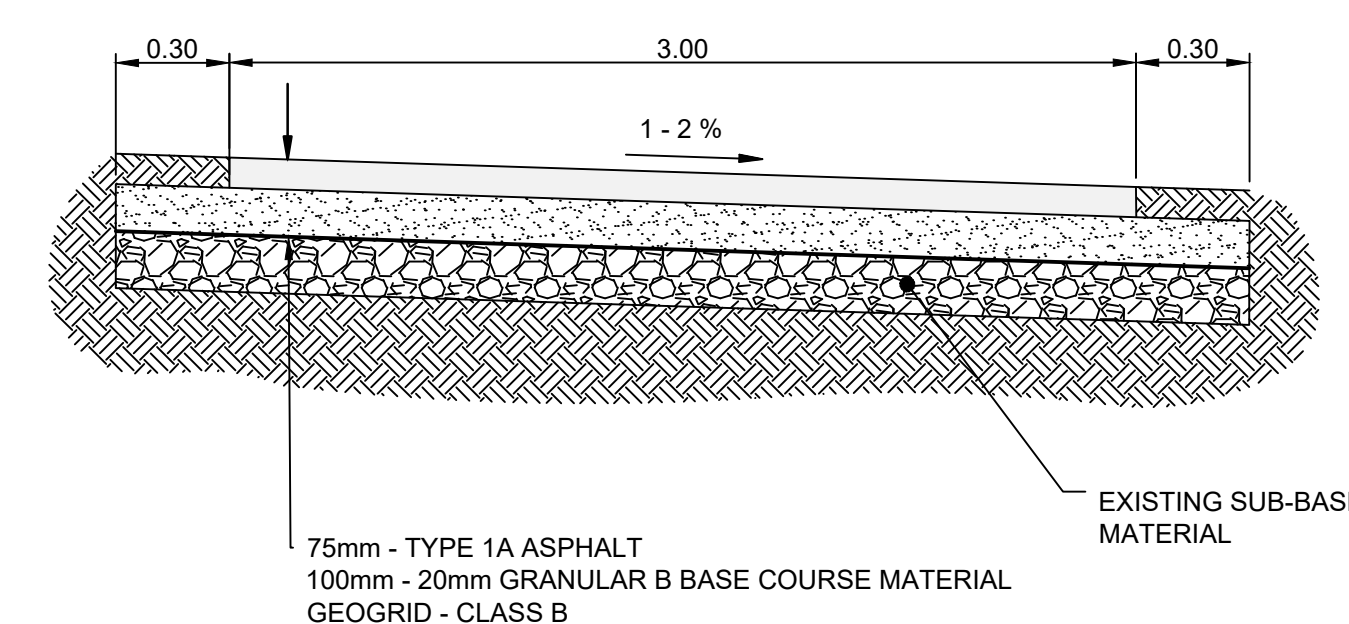
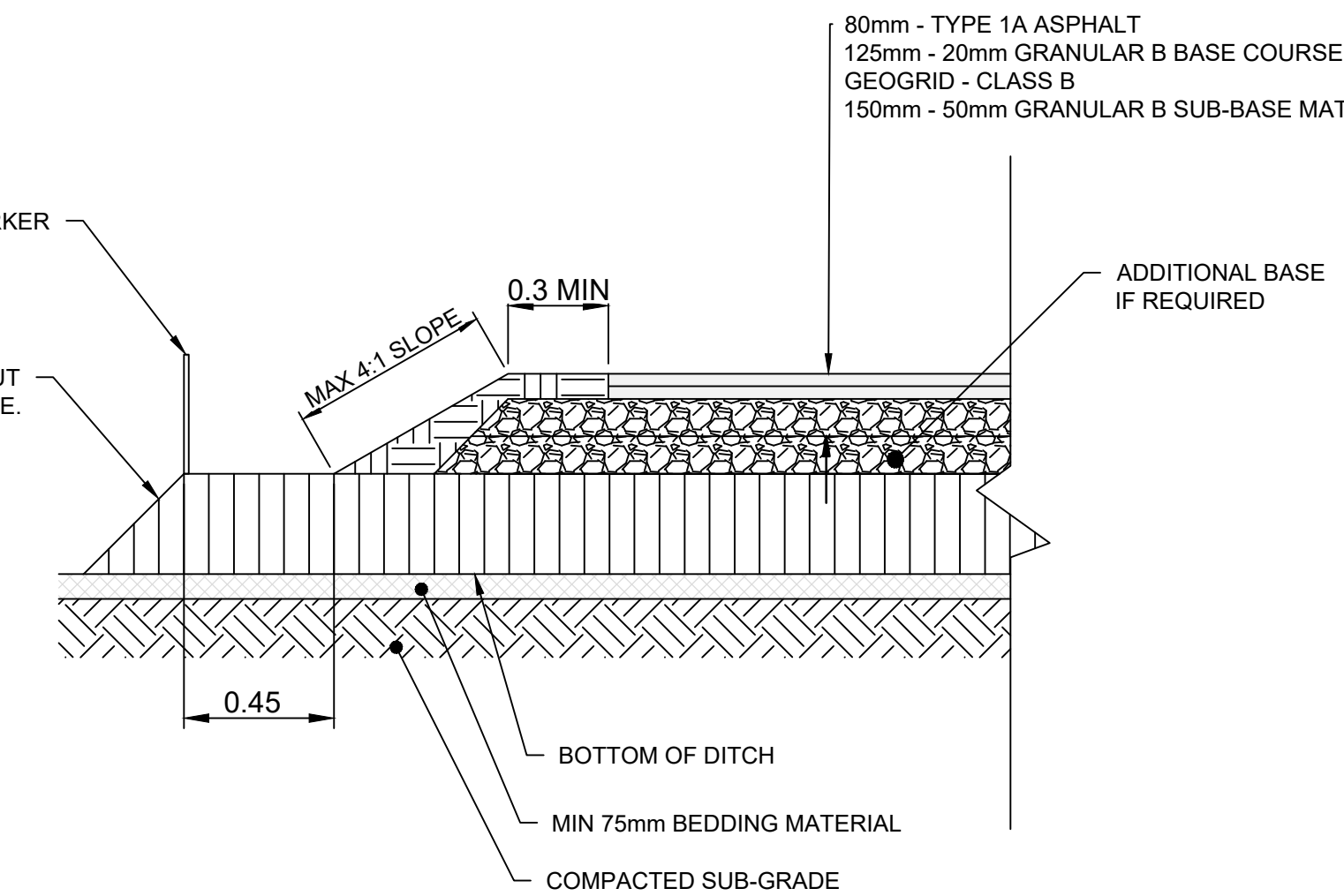
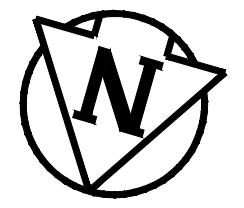
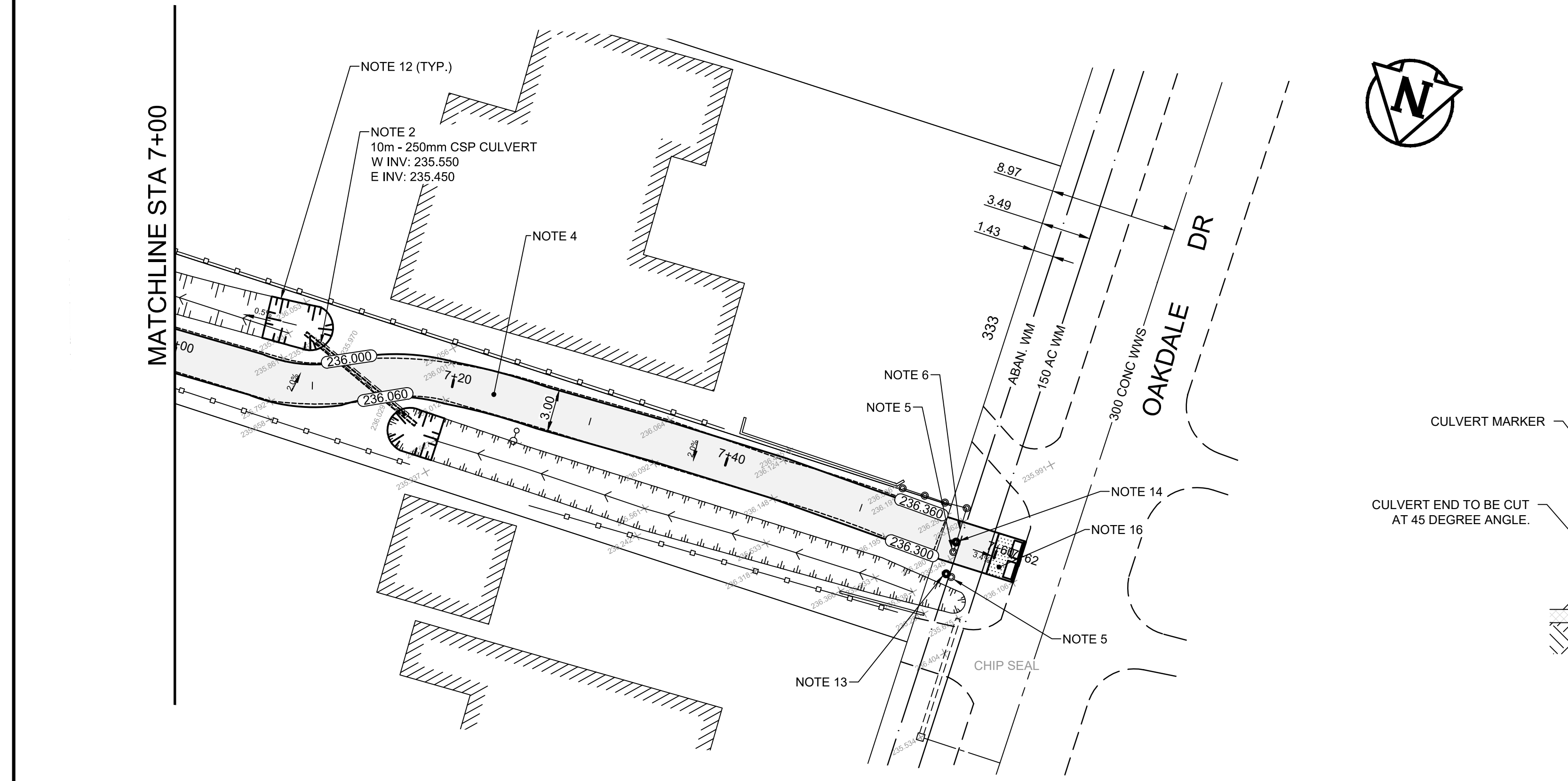


CROSS SECTION "A" - ASPHALT RECONSTRUCTION  
N.T.S



CROSS SECTION "B" - ASPHALT REHABILITATION  
N.T.S



TYPICAL CULVERT INSTSALLATION CROSS SECTION  
N.T.S

**CONSTRUCTION NOTES**

1. REMOVE EXISTING PAVEMENT AND CONSTRUCT NEW 80mm ASPHALT PAVEMENT AS PER CROSS SECTION "A"
2. REMOVE EXISTING CULVERT AND INSTALL NEW CSP CULVERT AS PER CW 3610
3. SALVAGE AND REINSTALL EXISTING POST BOLLARD (E18)
4. ASPHALT PATHWAY REHABILITATION AS PER CROSS SECTION "B"
5. REMOVE POST BOLLARD (E16)
6. REMOVE WOODEN FENCING (E23)
7. REMOVE CONCRETE SIDEWALK
8. RENEW EXISTING 100mm CONCRETE SIDEWALK
9. CONSTRUCT NEW CURB RAMP (SD-229D), AND INSTALL DETECTABLE SURFACE WARNING TILES (SD-229E)
10. RENEW MONOLITHIC SPLASH STRIP AND 150mm BARRIER CURB (SD-223A)
11. CONSTRUCT NEW MODIFIED BARRIER CURB (SD -205)
12. RE-GRADE EXISTING DITCH
13. SUPPLY AND INSTALL NEW POST BOLLARD (SCD-105B, E15)
14. INSTALL REMOVABLE STEEL BOLLARD (SCD-105C,E17)
15. TEMPORARY ACCESS DURING CONSTRUCTION
16. CONSTRUCT NEW 150mm REINFORCED CONCRETE SIDEWALK, NEW CURB RAMP (SD-229D), AND INSTALL DETECTABLE SURFACE WARNING TILES (SD-229E)
17. CONSTRUCT NEW 80mm ASPHALT PAVEMENT AS PER CROSS SECTION "A"

**GENERAL NOTES**

- A. PAVEMENT DIMENSIONS ARE TO BACK OF CURB
- B. ALL CURB RADII UNDER 15.0m SHALL BE MODIFIED
- C. CURB REPLACEMENT AS DIRECTED BY CONTRACT ADMINISTRATOR
- D. CONTRACTOR TO CONFIRM THE LOCATION OF ALL UTILITIES/SERVICES IN THE FIELD PRIOR TO CONSTRUCTION

**ISSUED FOR TENDER**  
NOT TO BE USED FOR  
CONSTRUCTION

**METRIC**  
WHOLE NUMBERS INDICATE MILLIMETERS  
DECIMALIZED NUMBERS INDICATE METERS

TENDER NO. 13-2024

EXISTING	LEGEND - PLAN	PROPOSED	EXISTING	LEGEND - PLAN	PROPOSED	EXISTING	LEGEND - PROFILE	PROPOSED
	HYDRANT			LDS/WWS			PAVEMENT REPAIR FABRIC	
	VALVE			WATERMAIN			CONCRETE SIDEWALK	
	CURB STOP			GAS			ASPHALT RECONSTRUCTION	
	MANHOLE			TRAFFIC SIGNALS			ASPHALT REHABILITATION	
	CATCH BASIN			HYDRO/STREET LIGHT			CULVERT	
	CATCH PIT/CURB INLET			MTS/SHAW			WOOD FENCE	
	HYDRO POLE			EDGE OF PAVEMENT/BACK OF CURB			UTILITY BOX	
	LIGHT STANDARD			PROPERTY LINE			BOLLARD	
	TRAFFIC SIGNAL POLE			RAMP CURB			TREE LINE	
	SURVEY BAR			ELEVATIONS			EDGE OF PAVEMENT/BOC	
	TREE			CENTER LINE DITCH			EDGE OF PATHWAY	

LOCATION APPROVED	B.M. ELEV.
UNDERGROUND STRUCTURES	
SUPR. U/G STRUCTURES	
DATE	
COMMITTEE	

**NOTE:**  
LOCATION OF UNDERGROUND STRUCTURES AS SHOWN ARE BASED ON THE BEST INFORMATION AVAILABLE. BUT NO GUARANTEE IS GIVEN THAT ALL EXISTING UTILITIES ARE SHOWN OR THAT THE GIVEN LOCATIONS ARE EXACT. CONFIRMATION OF EXISTENCE AND EXACT LOCATION OF ALL SERVICES MUST BE OBTAINED FROM THE INDIVIDUAL UTILITIES BEFORE PROCEEDING WITH CONSTRUCTION.

ENGINEERING DIVISION TECHNOLOGY SERVICES BRANCH 106 - 1155 PACIFIC AVE			
DESIGNED BY	D.PEN.	CHECKED BY	R.W. G.K. T.G.
DRAWN BY	D.PEN.	APPROVED BY	
HOR. SCALE:	1 : 250	DATE	2024/04/23
VERTICAL:			
NO.	REVISIONS	DATE	BY
2.	ISSUED FOR TENDER	2405/07	D.PEN.
1.	SUBMIT FOR PLAN APPROVAL	2403/27	D.PEN.

**THE CITY OF WINNIPEG**  
PUBLIC WORKS DEPARTMENT

**WILLIAM CLEMENT PARKWAY PATH**  
FROM GRANT AVENUE TO OAKDALE DRIVE  
ASPHALT PATHWAY RECONSTRUCTION, REHABILITATION  
AND ASSOCIATED WORKS  
FROM STA. 5+90 TO STA. 7+62

CITY DRAWING NUMBER  
SE-24-26  
SHEET 10 OF 14  
**6**