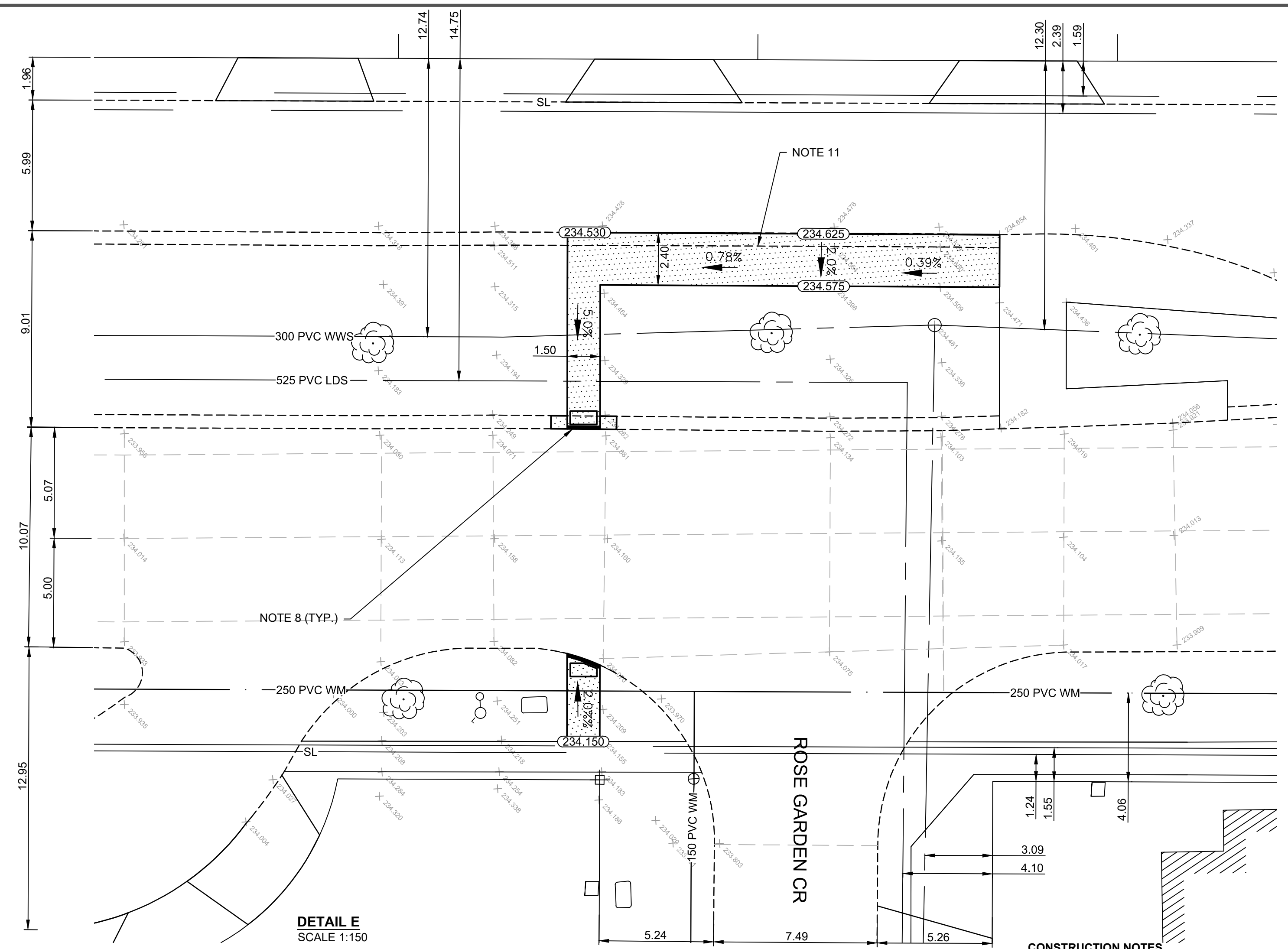
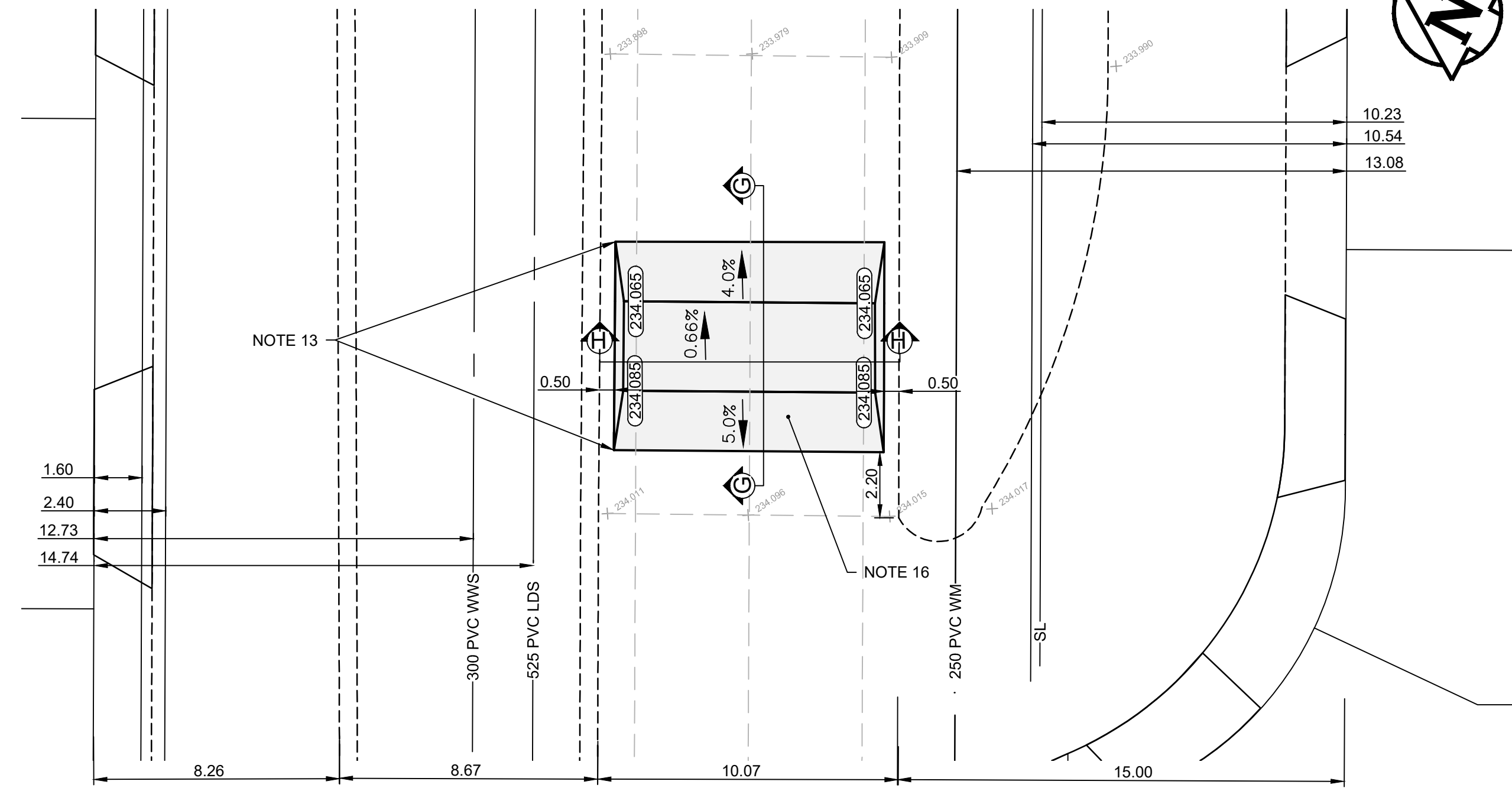


DETAIL C
SCALE 1:150



DETAIL E
SCALE 1:150



DETAIL D
SCALE 1:150

- CONSTRUCTION NOTES**
- REMOVE EXISTING CURB AND PAVEMENT & INSTALL SUITABLE FILL, TOP SOIL AND SOD TO GRADE
 - RENEW EXISTING 200mm REINFORCED CONCRETE
 - RENEW EXISTING MODIFIED BARRIER CURB (SD-203B)
 - RENEW EXISTING CONCRETE SIDEWALK (SD-228A)
 - REMOVE DECORATIVE STONE
 - CONSTRUCT NEW 150mm MODIFIED BARRIER CURB (SD-203B)
 - RE-GRADE EXISTING INTERLOCKING PAVING STONES IF REQUIRED
 - CONSTRUCT NEW 100mm CONCRETE SIDEWALK (SD-228A), NEW CURB RAMP (SD-229D), AND INSTALL DETECTABLE SURFACE WARNING TILES (SD-229E)
 - INSTALL NEW 1800mm CATCH BASIN WITH MODIFIED CURB AND GUTTER INLET FRAME (AP-018 & AP-019) AND CONNECT TO EXISTING SEWER WITH 250mm PVC PIPE AS PER CW 2130
 - INSTALL NEW CATCH PIT WITH MODIFIED CURB AND GUTTER INLET FRAME (AP-018, AP-019) AND CONNECT TO NEW 1800mm CATCH BASIN WITH 250mm PVC PIPE AS PER CW 2130
 - REMOVE EXISTING INTEGRAL MODIFIED BARRIER CURB AND SEPARATE SPLASH STRIP AND CONSTRUCT NEW MONOLITHIC CURB AND SIDEWALK AS PER (SD-228B)
 - REMOVE EXISTING INTEGRAL MODIFIED BARRIER CURB AND SEPARATE SPLASH STRIP AND CONSTRUCT NEW MONOLITHIC MODIFIED BARRIER CURB AND CONCRETE SPLASH STRIP (SD-203B AND SD-223A)
 - MILL 50mm HEADER IN CONCRETE ON BOTH SIDES OF SPEED TABLE AS DIRECTED BY CONTRACT ADMINISTRATOR
 - ABANDON EXISTING CATCH BASIN AS PER CW 2130
 - REMOVE EXISTING CONCRETE AND CONSTRUCT NEW RAISED CONCRETE CROSSWALK AS PER CROSS SECTION DETAIL F
 - CONSTRUCT NEW ASPHALT SPEED TABLE AS PER CROSS SECTION DETAIL G
 - INSTALL NEW PRE-CAST CONCRETE RISER AND NEW FRAME AND SOLID COVER (AP-006, AP-007)

- GENERAL NOTES**
- PAVEMENT DIMENSIONS ARE TO BACK OF CURB
 - ALL CURB RADII UNDER 15.0m SHALL BE MODIFIED
 - CURB REPLACEMENT AS DIRECTED BY CONTRACT ADMINISTRATOR

ISSUED FOR TENDER
NOT TO BE USED FOR CONSTRUCTION

METRIC
WHOLE NUMBERS INDICATE MILLIMETERS
DECIMALIZED NUMBERS INDICATE METERS
TENDER NO. 13-2024

EXISTING	LEGEND - PLAN	PROPOSED	EXISTING	LEGEND - PLAN	PROPOSED	EXISTING	LEGEND - PROFILE	PROPOSED
⊕	HYDRANT	◆	---	LDS/WWS	---	▭	CONCRETE	▭
⊗	VALVE	◆	---	WATERMAIN	---	▭	CONCRETE SIDEWALK	▭
⊙	CURB STOP	◆	---	GAS	---	▭	ASPHALT	▭
⊚	MANHOLE	●	---	TRAFFIC SIGNALS	---	▭	LANDSCAPE	▭
⊠	CATCH BASIN	●	---	HYDRO/STREET LIGHT	---	▭	METAL FENCE	▭
△	CURB INLET/CATCH PIT	▲	---	MTS/SHAW	---	▭	UTILITY BOX	▭
⊙	HYDRO POLE	●	---	BACK OF CURB	---	▭	TRAFFIC SIGNALS PIT	▭
⊙	LIGHT STANDARD	●	---	PROPERTY LINE	---	▭	JOINT	▭
⊙	TRAFFIC SIGNAL POLE	●	---	RAMP CURB	---	▭	EDGE OF PATH	▭
⊙	SURVEY BAR	◆	---	ELEVATIONS	(31.000)	▭	FLOW ARROW	▭
⊙	GEODETIC BENCH MARK	◆	---	TREE	---	▭		

LOCATION APPROVED UNDERGROUND STRUCTURES

DATE: _____

NOTE:
LOCATION OF UNDERGROUND STRUCTURES AS SHOWN ARE BASED ON THE BEST INFORMATION AVAILABLE. BUT NO GUARANTEE IS GIVEN THAT ALL EXISTING UTILITIES ARE SHOWN OR THAT THE GIVEN LOCATIONS ARE EXACT. CONFIRMATION OF EXISTENCE AND EXACT LOCATION OF ALL SERVICES MUST BE OBTAINED FROM THE INDIVIDUAL UTILITIES BEFORE PROCEEDING WITH CONSTRUCTION.

**ENGINEERING DIVISION
TECHNOLOGY SERVICES BRANCH
106 - 1155 PACIFIC AVE**

DESIGNED BY: **D.PEN** CHECKED BY: **G.K.R.W. T.G.**

DRAWN BY: **D.PEN** APPROVED BY: _____

HOR. SCALE: **1 : 150**

VERTICAL: _____

DATE: **2024/04/30**

THE CITY OF WINNIPEG
PUBLIC WORKS DEPARTMENT

BRIDGE LAKE DRIVE
FROM LAKEBEND ROAD TO NORTH TOWN ROAD
TRAFFIC CALMING IMPROVEMENTS
AND ASSOCIATED WORKS

CITY DRAWING NUMBER: **SE-24-29**
SHEET 13 OF 14

3