

Notes:

1. MATERIALS

- a) WOOD SLATS:
 - VERTICAL GRAIN CLEAR SITCA SPRUCE OR CLEAR CEDAR
 - PAINTED FINISH: CEDAR
- b) METAL LEG OPTIONS: GALVANIZED

2. MOUNTING

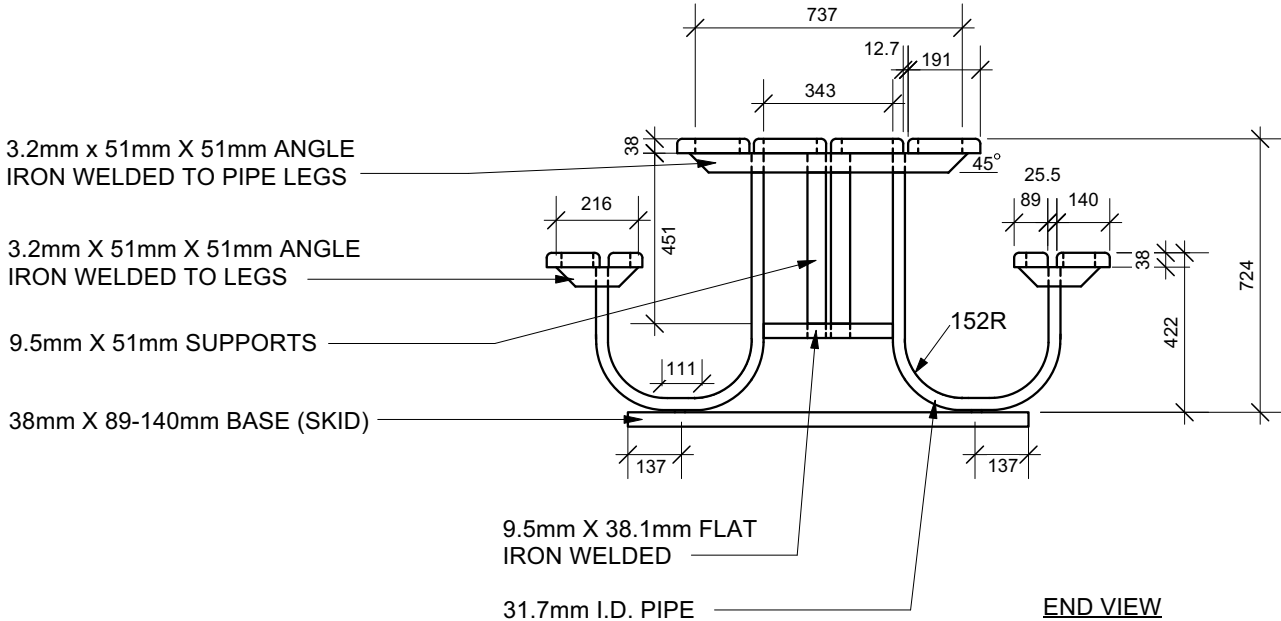
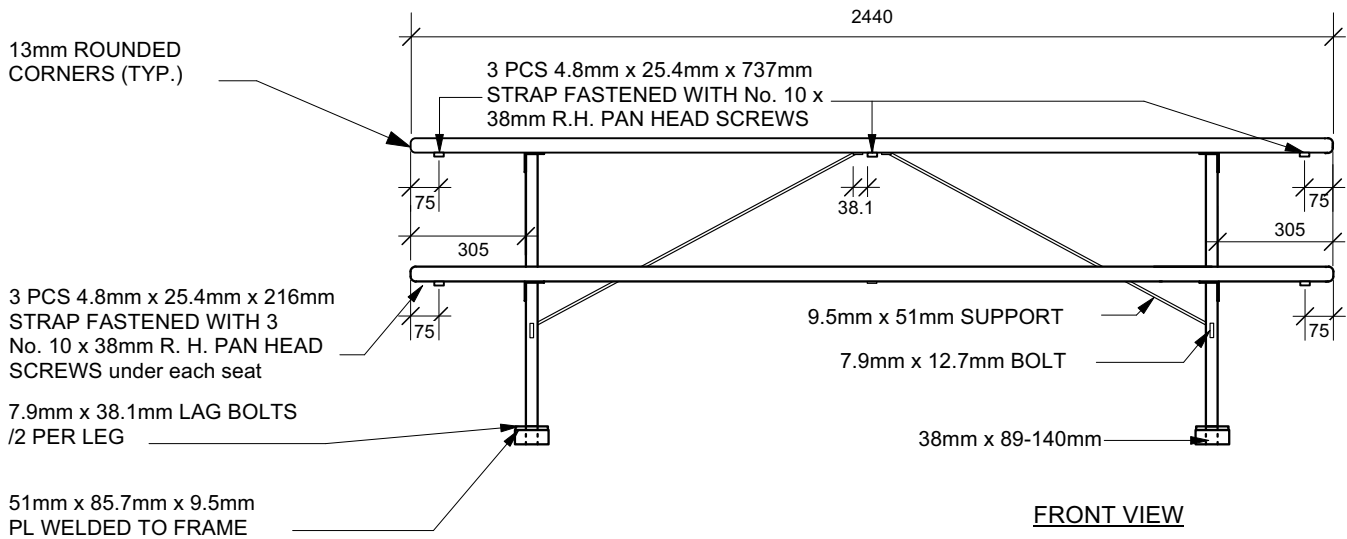
- a) SOD: 1 DUCKBILL ANCHOR
- b) GRANULAR/ASPHALT PAVEMENT: 2 DUCKBILL ANCHORS
- c) CONCRETE PAVEMENT: REMOVE TIMBER SKID, SURFACE MOUNT W/ 8 WEDGE ANCHORS C/W WASHER, MIN. 75 mm DEPTH.

Drawing Title:

TACHE STYLE METAL FRAME PICNIC TABLE

Drawing No:

SCD-122



NOTE:

ALL TABLE TOP AND SEAT BOARDS TO BE FASTENED TO ANGLE IRONS WITH 8mm CARRIAGE BOLTS, SECURED WITH WASHER AND NUT.

DIMENSIONS SHOWN ARE IN MILLIMETRES UNLESS OTHERWISE SPECIFIED

REVISION: 3
DATE: May 7/21
SCALE: N.T.S.
DRAWN BY: GZ/LL

The City of Winnipeg
Planning, Property and Development Department
Parks, Waterways & Community Initiatives Division
Unit 15 - 30 Fort Street, Winnipeg, MB, R3C 4X5

