

NOTES :

CONSTRUCTION STANDARDS
 TO BE CONSTRUCTED IN ACCORDANCE WITH MANITOBA HYDRO DISTRIBUTION AND SUBTRANSMISSION STANDARDS, LATEST REVISION.
 NO MAJOR CHANGE SHALL BE MADE WITHOUT APPROVAL OF THE DESIGN ENGINEER OR DELEGATE.

INSTALL NEW STREET LIGHTS AND CABLE ON ALIGNMENT AS SHOWN.

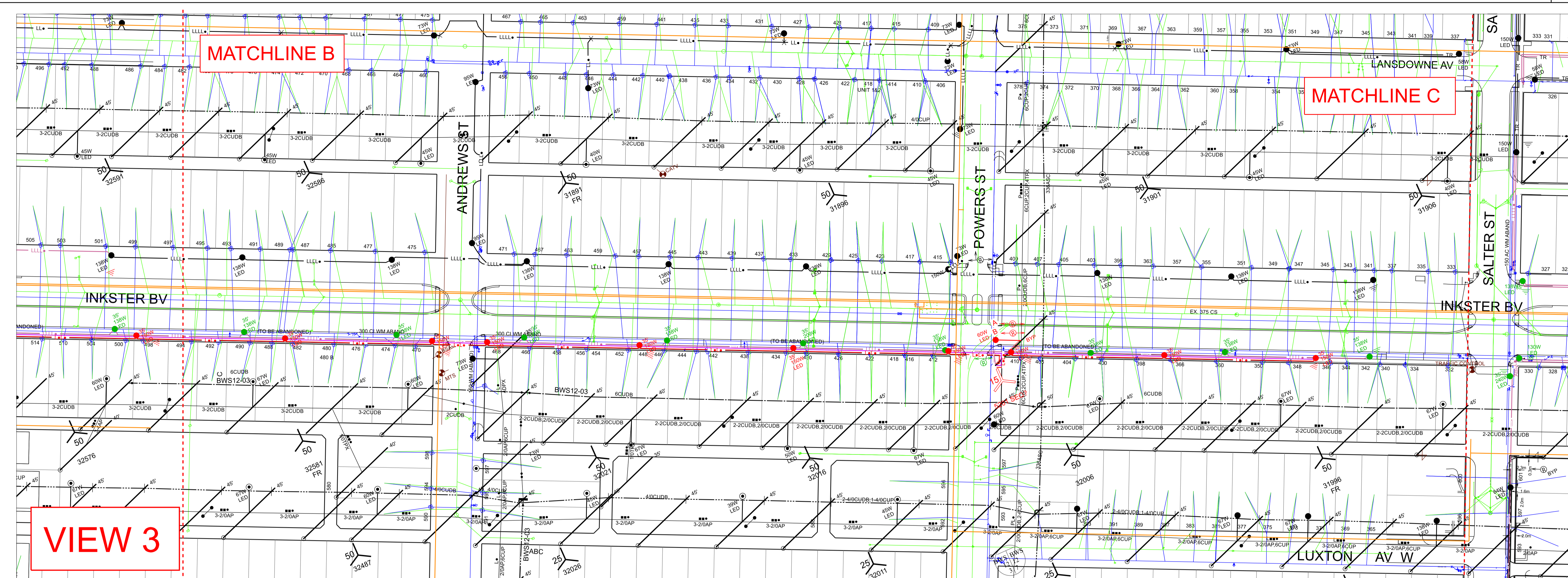
INSTALL NEW GROUND RODS AS PER CD 50-5

ALL STREET LIGHT CABLE TO BE INSTALLED IN 2" CONDUIT

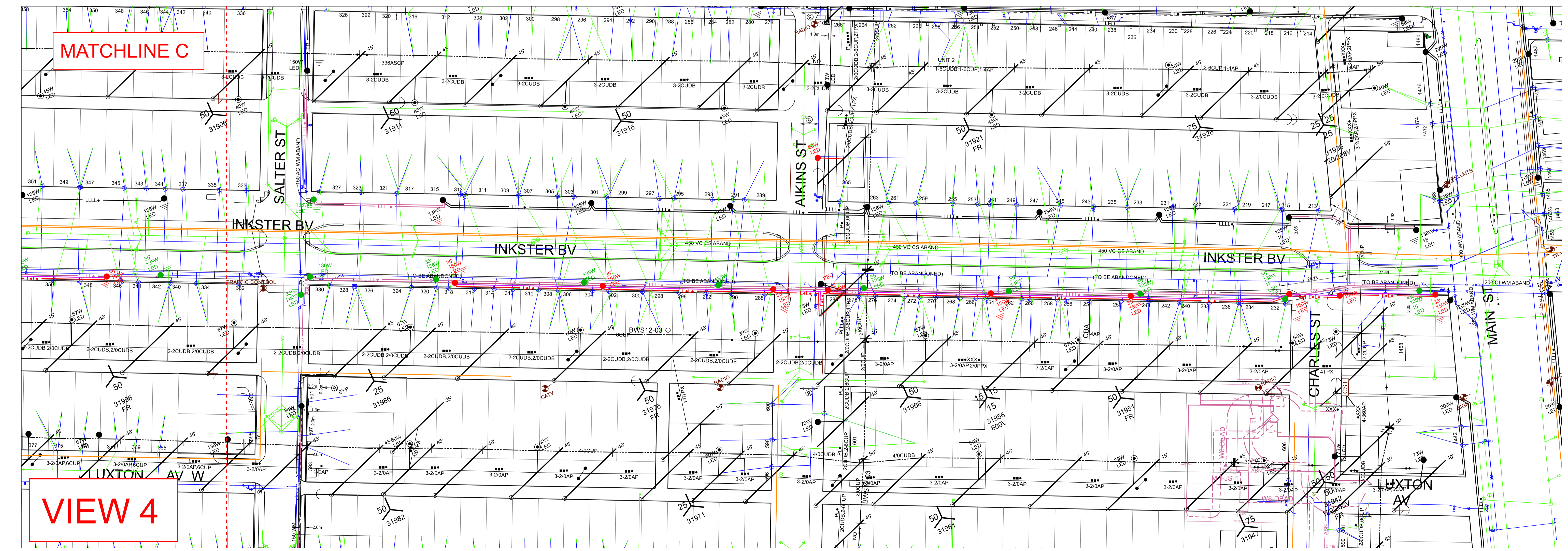
UPON DISCONNECTION BY MB HYDRO THE CONTRACTOR SHALL INSTALL TEMPORARY #6 OVERHEAD FEED IN ORDER TO MAINTAIN LIGHTING DURING CONSTRUCTION. AT THE END OF CONSTRUCTION TEMPORARY OVERHEAD SHALL BE DISCONNECTED BY THE CONTRACTOR.

U/G SL CABLE TO BE MINIMUM 1.0m AWAY FROM ALL OTHER UTILITIES UNLESS OTHERWISE NOTED

MB HYDRO SHALL CUT, CAP AND ABANDON ORIGINAL FEED TO THE STREET LIGHTS PRIOR TO REMOVAL. ALL FINAL CONNECTIONS WILL BE COMPLETED BY MB HYDRO.



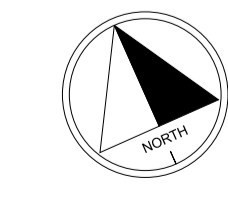
VIEW 3



VIEW 4

CONTACT "CLICK BEFORE YOU DIG MANITOBA" AT
ClickBeforeYouDigMB.com
 THREE FULL WORKING DAYS
 PRIOR TO CONSTRUCTION FOR LOCATION OF
 WATER, WASTEWATER, LAND DRAINAGE UTILITIES AND
 MANITOBA HYDRO UTILITIES

**PRELIMINARY NOT TO
 BY USED FOR
 CONSTRUCTION**



NO.	DATE	REVISIONS	BY	CHKD.	APP.

DRAWING NUMBER	REFERENCE DRAWINGS	DRAW	D.R.	AREA	4901, 5202
		CHECK		STATION NUMBER	MANITOBA HYDRO DISTRIBUTION ENGINEERING
		SCALE	1:750	FEEDER NUMBER	WO# P:39874 NETWORK # 4308417
		DATE	2024 04 XX	SYSTEM VOLTAGE	CSC: CITY CENTRE
					COW - INKSTER BLVD (EB SINCLAIR TO MAIN)
					CUSTOMER SERVICE PROJECT
					SALVAGE 38-35' 150 V LED STREET LIGHTS AND
					INSTALL 31-35' 150 V LED STREET LIGHTS
					1-04707-DE-50000-0648

B1 SIZE - 1000 x 707