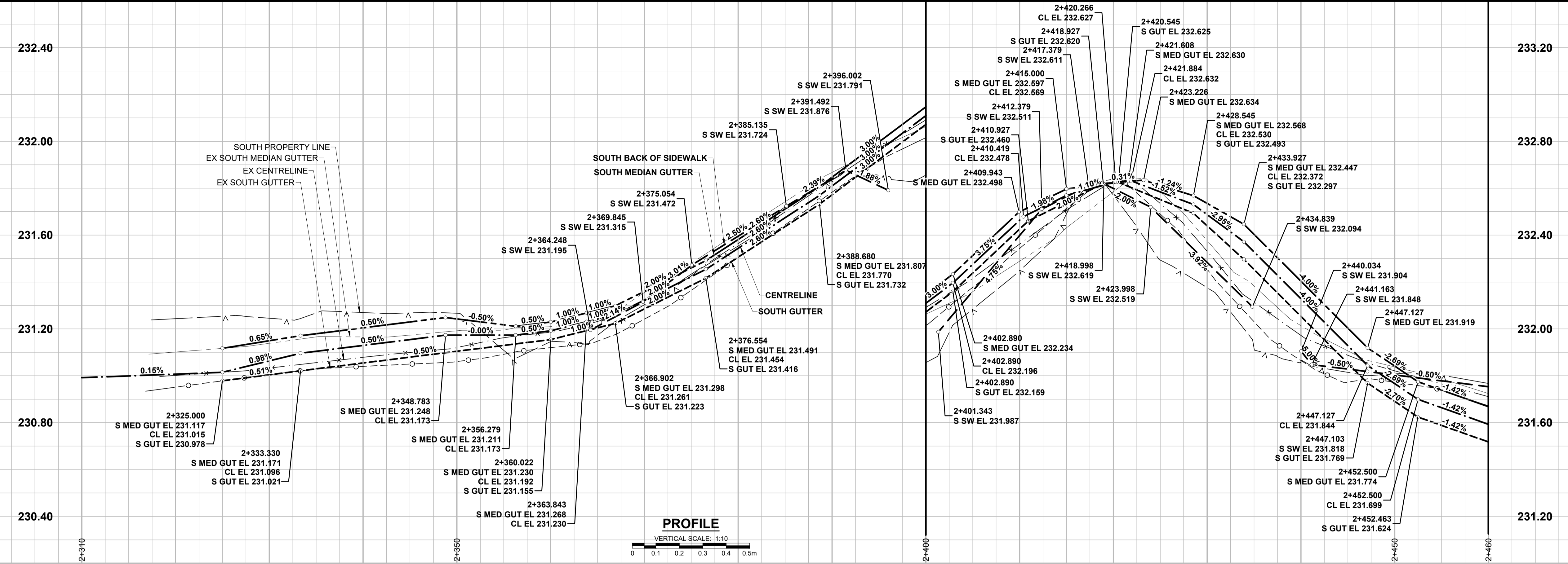
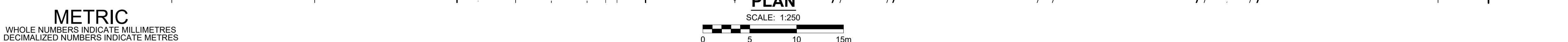
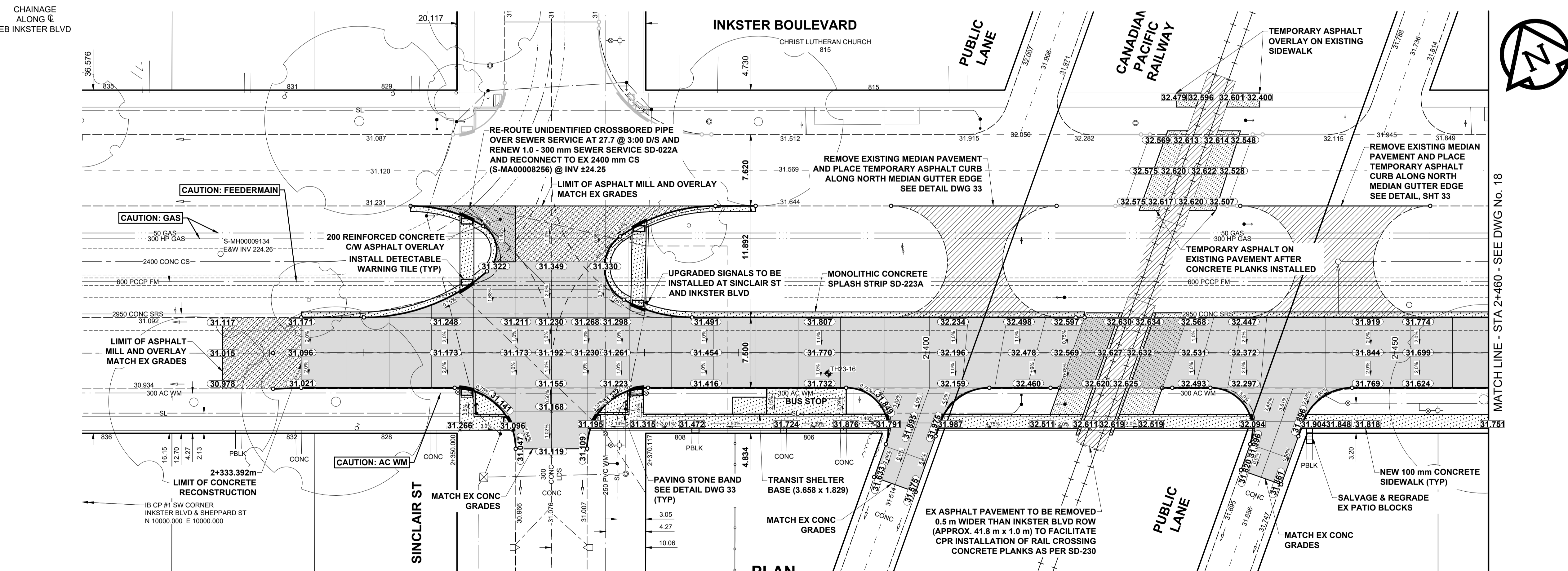


ISO A1 - 594mm x 841mm
Last Saved: 4/16/2024 2:48 PM by KBarand
X:\Proj\2023\23036780-2025 McGregg-Inkster-Renewal\00_CAD\inkster-EB07_Sheets\2303678-Inkster-PP-RECON.dwg



- NOTES**
- ADJUST MH AND CB RIMS TO NEW GRADES.
 - LAMP STANDARDS, HYDRO POLES, AND ANCHORS THAT REQUIRE TEMPORARY SUPPORT, REMOVAL OR REPLACEMENT, TO BE DONE SO AT THE EXPENSE OF THE CONTRACTOR AS NECESSARY.
 - CONTRACTOR TO REGRADE/RENEW EXISTING PRIVATE SIDEWALKS TO LIMITS AS SHOWN. SIDEWALKS TO BE RENEWED WITH CONCRETE UNLESS NOTED OTHERWISE.
 - CONTRACTOR TO TAKE PRECAUTIONARY STEPS TO PROTECT EXISTING TREES WITHIN THE LIMITS OF CONSTRUCTION FROM DAMAGE FROM CONSTRUCTION ACTIVITIES AS OUTLINED IN THE SPECIFICATIONS.
 - CONTRACTOR TO CONFIRM THE LOCATION OF ALL UTILITIES/SERVICES IN THE FIELD PRIOR TO CONSTRUCTION.
 - CB SD-023 & SD-024 OFFSETS ARE DIMENSIONED TO BOC. CB SD-025 OFFSETS ARE DIMENSIONED O/C. TF-100 OFFSETS ARE DIMENSIONED TO FACE OF CURB.
 - IN GENERAL, PAVEMENT AND SIDEWALK AREAS TO BE REMOVED. MATCH RECONSTRUCTION LIMITS.
 - REFER TO TENDER FOR DETAILS REGARDING TRAFFIC MANAGEMENT.
 - EXISTING LONG WATER SERVICES TO BE INSULATED (SD-018). REFER TO TENDER FOR FURTHER REQUIREMENTS AND AS NOTED IN PLAN.
 - ALL COSTS, MATERIALS AND LABOR ASSOCIATED WITH THE RESTORATION OF THE CATHODIC PROTECTED WATERMAIN WILL BE RESPONSIBILITY OF THE CONTRACTOR.
 - MODIFIED BARRIER CURB & GUTTER INLET FRAME & COVER TF-122.
 - ADD 200.000 m TO ABBREVIATED ELEVATIONS TO OBTAIN GEODETIC ELEVATIONS.
- AC WATERMAIN NOTES**
- USE OF VIBRATORY HEAVY EQUIPMENT WITHIN 3.0 METERS HORIZONTALLY OF THE ASBESTOS-CONCRETE WATER MAIN CENTERLINE IS PROHIBITED. THIS RESTRICTION DOES NOT APPLY TO THE USE OF VIBRATORY ROLLERS ON THE PAVEMENT SURFACE LAYER.
 - CONCRETE DEMOLITION AND REMOVAL WITHIN 3.0 METERS HORIZONTALLY OF THE ASBESTOS-CONCRETE WATER MAIN SHALL BE COMPLETED BY SAW CUTTING OR USE OF HAND-HELD JACKHAMMERS. USE OF MACHINE MOUNTED CONCRETE BREAKERS ABOVE ASBESTOS-CONCRETE WATER MAINS IS PROHIBITED.
- FEEDERMAIN NOTES**
- CONTACT THE WATER AND WASTE DEPARTMENT'S CONSTRUCTION SERVICES COORDINATOR AT 204-986-4289, 7 DAYS PRIOR TO THE COMMENCEMENT OF CONSTRUCTION TO ARRANGE FOR AN INSPECTION.
 - PRIOR TO ANY CONSTRUCTION, THE FEEDERMAIN MUST BE EXPOSED BY A SOFT DIG METHOD SO AS TO CONFIRM DEPTH AND LOCATION.
 - A MINIMUM CLEARANCE OF 0.5 m MUST BE PROVIDED BETWEEN THE UNDERSIDE OF THE PROPOSED WORKS AND THE TOP ANY EXISTING FEEDERMAIN BY TRENCHLESS OR OPEN TRENCH.
 - DO NOT OPERATE VIBRATORY EQUIPMENT OVER OR WITHIN 3.0 m OF THE FEEDERMAIN CENTRELINE.
 - CONCRETE DEMOLITION AND REMOVAL WITHIN 3 METERS HORIZONTALLY OF THE FEEDERMAIN SHALL BE COMPLETED BY SAWCUTTING AND REMOVAL, OR BY THE USE OF HAND HELD JACKHAMMERS. USE OF MACHINE MOUNTED CONCRETE BREAKERS ABOVE THE FEEDERMAIN SHALL NOT BE PERMITTED.



EXISTING	LEGEND - PLAN	NEW	EXISTING	LEGEND - PLAN	NEW	EXISTING	LEGEND - PLAN	NEW	
---	GAS	○	○	MANHOLE	●	---	CONCRETE PAVEMENT	---	LOCATION APPROVED
---	MTS HANDWELL/PEDESTAL	□	□	CATCH BASIN/CATCH PIT	■	---	CONC SIDEWALK/MEDIAN	---	UNDERGROUND STRUCTURES
---	HYDRO HANDWELL/CABINET	△	△	CURB INLET WITH BOX	▲	---	ASPHALT PAVEMENT	---	
---	CATV/FIBRE OPTIC	○	○	TREE	○	---	PAVING STONE	---	
---	TRAFFIC SIGNALS/PIT	+	+	TEST HOLE	+	---	GRAVEL	---	
---	LAND DRAINAGE SEWER	---	---	PROPERTY LINE	---	---	RAMP CURB	---	
---	SANITARY/COMBINED SEWER	---	---	SURVEY BAR	---	---	PLANING/REMOVAL	---	
---	CB LEAD/SSP/DCP	---	---	FENCE	---	---		---	
---	WATERMAIN	---	---	BOC/EDGE OF PAVEMENT	---	---		---	
---	SUBDRAIN	---	---	ELEVATION	(33.333)	---		---	
---	DITCH	---	---	TRAFFIC SIGN	(33.333)	---		---	

LOCATION APPROVED UNDERGROUND STRUCTURES

SUPR. U/G STRUCTURES COMMITTEE DATE

NOTE: LOCATION OF UNDERGROUND STRUCTURES AS SHOWN ARE BASED ON THE BEST INFORMATION AVAILABLE BUT NO GUARANTEE IS GIVEN THAT ALL EXISTING UTILITIES ARE SHOWN OR THAT THE GIVEN LOCATIONS ARE EXACT. CONFIRMATION OF EXISTENCE AND EXACT LOCATION OF ALL SERVICES MUST BE OBTAINED FROM THE INDIVIDUAL UTILITIES BEFORE PROCEEDING WITH CONSTRUCTION.

BM 26-03	ELEV 230.992 m	Bolt in 14.3 m Conc. pile, 2.2 m S. of N.L. of Inkster Blvd., and on W.L. of Atkins St.	
DESIGNED BY	GFC	CHECKED BY	RPB
DRAWN BY	KMB	APPROVED BY	RPB
BY		RELEASED FOR CONSTRUCTION	
C	ISSUED FOR ADDENDUM 2	24/04/16	GFC
B	ISSUED FOR TENDER	24/03/22	GFC
A	ISSUED FOR CLIENT REVIEW	24/03/20	GFC
No.	REVISIONS	YYMMDD	BY
		DATE	MARCH 20, 2024

PROFESSIONAL'S SEAL

G.F. COOLIDGE
Member
24465
2024-04-17
REGISTERED PROFESSIONAL ENGINEER

CONSULTANT FILE NAME
2303678-Inkster-PP-RECON.dwg

THE CITY OF WINNIPEG
PUBLIC WORKS DEPARTMENT
ENGINEERING DIVISION

2024-2025 REGIONAL STREET RENEWAL PROGRAM
EB INKSTER BOULEVARD
SINCLAIR STREET TO MAIN STREET
PAVING AND GRADING
SINCLAIR ST TO STA 2+460

CITY DRAWING NUMBER
P-3575-17

SHEET 17 OF 33

DRAWING NUMBER
17

TENDER No. 155-2024

ENGINEERS GEOSCIENTISTS MANITOBA
Certificate of Authorization
MORRISON HERSHFELD
No. 1736
TENDER No. 155-2024