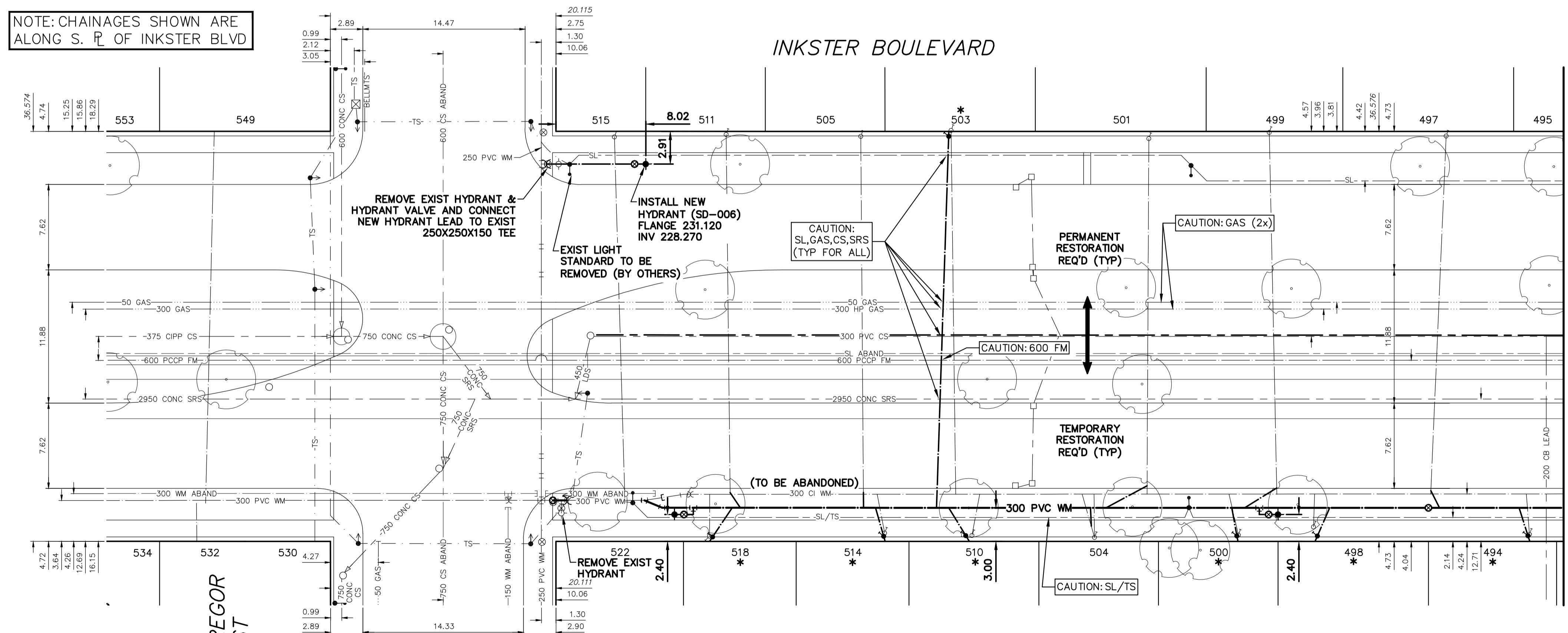


WATER SERVICE INFORMATION					
ADDRESS	SIZE (mm)	SIZE (mm)	SHORT & LONG MEASUREMENTS	CORP. LOCATION	REMARKS
* 494 INKSTER BLVD	20	20	1.22 WEL HSE	0.3 W OF S/C	RENEW TO P/L W/20 CU
RESIDENTIAL	LEAD	LEAD	86.839 EEL MCGREGOR ST		RECONNECT SERVICE
497 INKSTER BLVD	20	20	4.27 WEL HSE	0.9 W OF S/C	RECONNECT SERVICE
RESIDENTIAL	CU	CU	78.409 EEL MCGREGOR ST		RECONNECT SERVICE
* 498 INKSTER BLVD	20	20	2.13 EWL HSE	0.3 W OF S/C	RENEW TO P/L W/20 CU
RESIDENTIAL	LEAD	CU	67.574 EEL MCGREGOR ST		RECONNECT SERVICE
499 INKSTER BLVD	20	12	3.20 WEL HSE	OPP OF S/C	RECONNECT SERVICE
RESIDENTIAL	CU	LEAD	63.633 EEL MCGREGOR ST		RECONNECT SERVICE
* 500 INKSTER BLVD	20	20	1.22 WEL HSE	1.22 W OF S/C	RENEW TO P/L W/20 CU
RESIDENTIAL	LEAD	LEAD	60.872 EEL MCGREGOR ST		RECONNECT SERVICE
501 INKSTER BLVD	20	12	0.91 EEL HSE	OPP OF S/C	RECONNECT SERVICE
RESIDENTIAL	CU	CU	52.886 EEL MCGREGOR ST		RECONNECT SERVICE
* 503 INKSTER BLVD	12	12	2.13 EWL HSE	0.6 E OF S/C	RENEW TO P/L W/20 CU
RESIDENTIAL	LEAD	CU	35.255 EEL MCGREGOR ST		RECONNECT SERVICE
504 INKSTER BLVD	20	20	4.50 WEL HSE	OPP OF S/C	RECONNECT SERVICE
RESIDENTIAL	CU	LEAD	48.040 EEL MCGREGOR ST		RECONNECT SERVICE
505 INKSTER BLVD	20	20	2.74 WEL HSE	OPP OF S/C	RECONNECT SERVICE
RESIDENTIAL	CU	CU	27.193 EEL MCGREGOR ST		RECONNECT SERVICE
* 510 INKSTER BLVD	20	20	4.72 EWL HSE	0.9 E OF S/C	RENEW TO P/L W/20 CU
RESIDENTIAL	LEAD	LEAD	37.111 EEL MCGREGOR ST		RECONNECT SERVICE
511 INKSTER BLVD	20	20	2.13 WEL HSE	OPP OF S/C	RECONNECT SERVICE
RESIDENTIAL	CU	CU	15.186 EEL MCGREGOR ST		RECONNECT SERVICE
* 514 INKSTER BLVD	20	20	1.52 WEL HSE	OPP OF S/C	RENEW TO P/L W/20 CU
RESIDENTIAL	LEAD	CU	29.326 EEL MCGREGOR ST		RECONNECT SERVICE
515 INKSTER BLVD	20	20	4.27 EWL HSE	0.4 E OF S/C	OUTSIDE RENEWAL LIMITS
RESIDENTIAL	CU	CU	5.220 EEL MCGREGOR ST		RECONNECT SERVICE
* 518 INKSTER BLVD	20	20	1.52 WEL HSE	0.3 W OF S/C	RENEW TO P/L W/20 CU
RESIDENTIAL	LEAD	LEAD	13.703 EEL MCGREGOR ST		RECONNECT SERVICE
522 INKSTER BLVD	20	20	5.70 NSL HSE	0.1 N OF S/C	OUTSIDE RENEWAL LIMITS
RESIDENTIAL	CU	LEAD	12.74 SSL INKSTER BLVD		SERVICED OFF MCGREGOR ST

NOTE: CHAINAGES SHOWN ARE ALONG S. R. OF INKSTER BLVD



- ### CONSTRUCTION NOTES
- EXCAVATIONS WITHIN 3.0m OF THE OUTSIDE EDGE OF A FEEDER MAIN (EXCLUDING HYDROVAC HOLES) AND WHICH EXTEND BELOW THE OBVERT OF THE FEEDER MAIN SHALL UTILIZE SHORING METHODS THAT PRECLUDE THE MOVEMENT OF NATIVE IN-SITU SOILS AND PIPE BEDDING (I.E. TIGHT SHORING SYSTEMS).
 - EXISTING FEEDER MAIN SHALL BE EXPOSED USING HYDROVAC EXCAVATION TO CONFIRM DEPTH PRIOR TO CROSSING OF NEW WATER MAINS OR WATER SERVICES.
 - MIN. CLEARANCE FOR ALL FEEDER MAIN CROSSINGS SHALL BE 1.0m UNDER OR 0.5m OVER EXISTING FEEDER MAIN.
 - THE CONTRACTOR SHALL CONSULT WITH MANITOBA HYDRO FOR HIGH PRESSURE GAS MAIN CROSSING REQUIREMENTS. FULL TIME SAFETY WATCH AND HYDROVAC EXCAVATION TO CONFIRM DEPTHS PRIOR TO CROSSING IS REQUIRED.

MATCHLINE 2+10.00
SEE DWG D-16847

FOR INDEX SEE D-16845

NOTE: ALL VALVES TO BE INSTALLED COUNTERCLOCKWISE TO CLOSE

ENGINEERS GEOSCIENTISTS MANITOBA
Certificate of Authorization
MORRISON HERSHFELD
No. 1736

METRIC
WHOLE NUMBERS INDICATE MILLIMETRES
DECIMALIZED NUMBERS INDICATE METRES
UNLESS OTHERWISE NOTED

WARNING
IF POWER EQUIPMENT OR EXPLOSIVES ARE TO BE USED FOR EXCAVATION ON THIS PROJECT THE CONTRACTOR MUST:
1) NOTIFY THE GAS COMPANY OF THE PROPOSED LOCATION OF EXCAVATION.
2) TAKE PRECAUTION TO AVOID DAMAGE TO GAS COMPANY INSTALLATIONS.
SEE PROVINCIAL REGULATION 210/72 FOR DETAILS

LOCATION APPROVED UNDERGROUND STRUCTURES
SUPV. U/G STRUCTURES COMMITTEE DATE
NOTE:
LOCATION OF UNDERGROUND STRUCTURES AS SHOWN ARE BASED ON THE BEST INFORMATION AVAILABLE BUT NO GUARANTEE IS GIVEN THAT ALL EXISTING UTILITIES ARE SHOWN OR THAT THE GIVEN LOCATIONS ARE EXACT. CONFIRMATION OF EXISTENCE AND EXACT LOCATION OF ALL SERVICES MUST BE OBTAINED FROM THE INDIVIDUAL UTILITIES BEFORE PROCEEDING WITH CONSTRUCTION.

VERTICAL DATUM: CGVD28 (HT2.0 Geoid)
HORIZONTAL DATUM: NAD83 (June 1990), Zone 14

NO.	ISSUED FOR CONSTRUCTION	DATE	BY
0	ISSUED FOR CONSTRUCTION	2024/03/12	NJK
NO.	REVISIONS	DATE	BY

MH MORRISON HERSHFELD now **Stantec**

DESIGNED BY: JKH
DRAWN BY: DML
SCALE: HORIZONTAL 1:250, VERTICAL 1:50
DATE: MARCH 12, 2024

CHECKED BY: NJK
APPROVED BY: ADB
RELEASED FOR CONSTRUCTION BY: RYAN LUCKY
DATE: MARCH 11, 2024

PLOT DATE: 2024 03 12

ENGINEER'S SEAL
CONSULTANT DRAWING NUMBER

THE CITY OF WINNIPEG
WATER AND WASTE DEPARTMENT
ENGINEERING SERVICES DIVISION

2024 WATER MAIN RENEWALS
CONTRACT 6
INKSTER BOULEVARD
McGREGOR STREET TO
91m W OF ANDREWS STREET

SHEET 3 OF 12
CITY DRAWING NUMBER
D-16846

TENDER NUMBER: 162-2024
CONTRACT NUMBER: 6
FILE PATH: X:\Pro\2023\230367800-2023-2025 McGregor-Inkster Renewals\09_CAD\Water Main Renewal\07_Sheets\FILE NAME: 2303678-Sheet-03.dwg