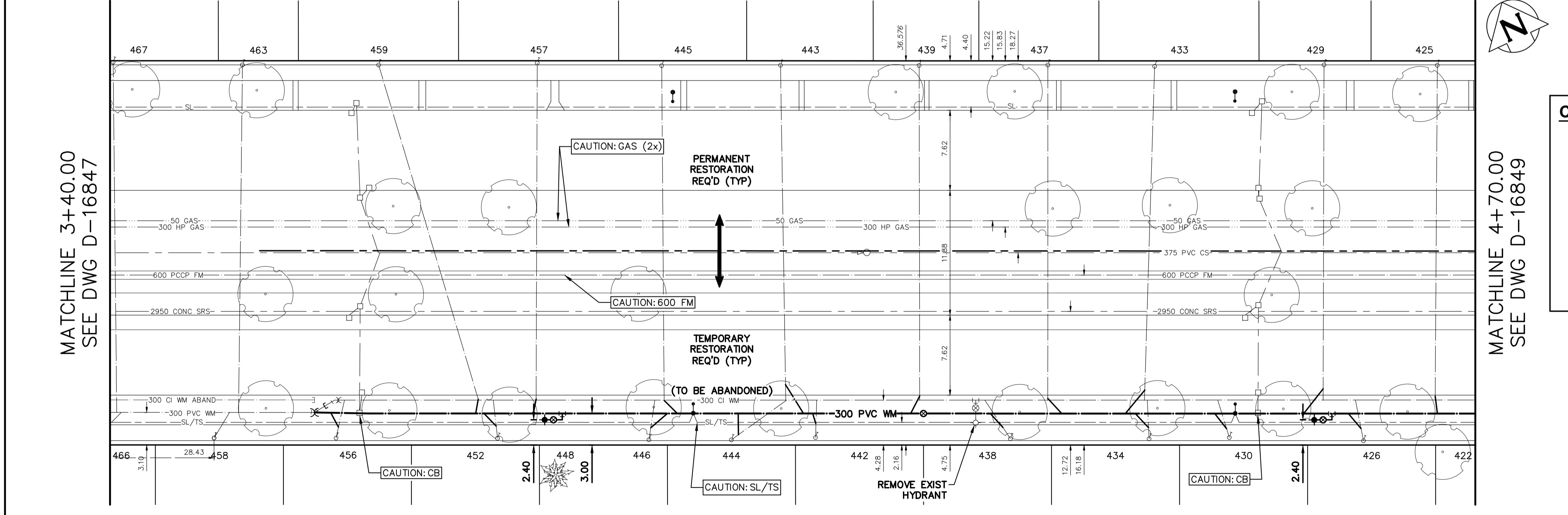


WATER SERVICE INFORMATION					
ADDRESS	SIZE (mm) MATERIAL (STREET)	SIZE (mm) MATERIAL (PROP.)	SHORT & LONG MEASUREMENTS	CORP. LOCATION	REMARKS
425 INKSTER BLVD	20	20	3.05 WEL HSE	OPP OF S/C	RECONNECT SERVICE
RESIDENTIAL	CU	CU	36.375 WWL POWERS ST	-	-
426 INKSTER BLVD	20	20	2.13 EWL HSE	0.6 W OF S/C	RECONNECT SERVICE
RESIDENTIAL	CU	CU	43.437 WWL POWERS ST	-	-
429 INKSTER BLVD	20	20	2.44 WEL HSE	OPP OF S/C	RECONNECT SERVICE
RESIDENTIAL	CU	CU	47.164 WWL POWERS ST	-	-
430 INKSTER BLVD	20	20	3.20 EWL HSE	1.2 W OF S/C	RECONNECT SERVICE
RESIDENTIAL	CU	CU	56.209 WWL POWERS ST	-	-
433 INKSTER BLVD	20	20	4.72 WEL HSE	1.4 W OF S/C	RECONNECT SERVICE
RESIDENTIAL	CU	CU	43.292 WWL POWERS ST	-	-
434 INKSTER BLVD	20	20	1.68 WEL HSE	OPP OF S/C	RECONNECT SERVICE
RESIDENTIAL	CU	CU	63.849 WWL POWERS ST	-	-
437 INKSTER BLVD	20	20	3.20 WEL HSE	OPP OF S/C	RECONNECT SERVICE
RESIDENTIAL	CU	CU	73.456 WWL POWERS ST	-	-
438 INKSTER BLVD	20	20	2.59 WEL HSE	0.8 W OF S/C	RECONNECT SERVICE
RESIDENTIAL	CU	CU	77.048 WWL POWERS ST	-	-
439 INKSTER BLVD	20	20	3.35 EWL HSE	OPP OF S/C	RECONNECT SERVICE
RESIDENTIAL	CU	CU	85.711 WWL POWERS ST	-	-
442 INKSTER BLVD	20	20	0.60 EWL HSE	0.9 W OF S/C	RECONNECT SERVICE
RESIDENTIAL	CU	CU	85.695 EEL ANDREWS ST	-	-
443 INKSTER BLVD	20	20	2.13 WEL HSE	0.6 E OF S/C	RECONNECT SERVICE
RESIDENTIAL	CU	CU	82.393 EEL ANDREWS ST	-	-
444 INKSTER BLVD	20	20	2.13 WEL HSE	0.6 E OF S/C	RECONNECT SERVICE
RESIDENTIAL	CU	CU	77.692 EEL ANDREWS ST	-	-
445 INKSTER BLVD	20	20	3.05 EWL HSE	OPP OF S/C	RECONNECT SERVICE
RESIDENTIAL	CU	CU	71.084 EEL ANDREWS ST	-	-
446/448 INKSTER BLVD	20	20	0.30 WEL HSE	0.6 E OF S/C	RECONNECT SERVICE
RESIDENTIAL	CU	CU	69.841 EEL ANDREWS ST	-	-
452 INKSTER BLVD	20	20	1.98 WEL HSE	0.8 W OF S/C	RECONNECT SERVICE
RESIDENTIAL	CU	CU	55.422 EEL ANDREWS ST	-	-
456 INKSTER BLVD	20	20	3.35 EEL HSE	1.2 E OF S/C	RECONNECT SERVICE
RESIDENTIAL	CU	CU	40.044 EEL ANDREWS ST	-	-
457 INKSTER BLVD	20	20	1.52 WEL HSE	OPP OF S/C	RECONNECT SERVICE
RESIDENTIAL	CU	CU	59.231 EEL ANDREWS ST	-	-
458 INKSTER BLVD	20	20	4.00 EWL HSE	1.5 E OF S/C	OUTSIDE RENEWAL LIMITS
RESIDENTIAL	CU	CU	28.430 EEL ANDREWS ST	-	-
459 INKSTER BLVD	16	20	3.51 WEL HSE	3.7 E OF S/C	RECONNECT SERVICE
RESIDENTIAL	CU	CU	44.128 EEL ANDREWS ST	-	-
463 INKSTER BLVD	20	20	1.90 WEL HSE	0.3 W OF S/C	OUTSIDE RENEWAL LIMITS
RESIDENTIAL	CU	LEAD	31.164 EEL ANDREWS ST	-	-
466 INKSTER BLVD	20	20	3.60 WEL HSE	2.2 E OF S/C	OUTSIDE RENEWAL LIMITS
RESIDENTIAL	CU	CU	0.000 ?L ANY ST	-	-
467 INKSTER BLVD	20	12	0.60 EWL HSE	0.5 E OF S/C	OUTSIDE RENEWAL LIMITS
RESIDENTIAL	CU	LEAD	18.854 EEL ANDREWS ST	-	-

\* SERVICES TO BE RENEWED TO PL. ALL OTHERS TO BE RECONNECTED.

NOTE: CHAINAGES SHOWN ARE ALONG S. R. OF INKSTER BLVD

INKSTER BOULEVARD



- CONSTRUCTION NOTES**
- EXCAVATIONS WITHIN 3.0m OF THE OUTSIDE EDGE OF A FEEDER MAIN (EXCLUDING HYDROVAC HOLES) AND WHICH EXTEND BELOW THE OVERTOP OF THE FEEDER MAIN SHALL UTILIZE SHORING METHODS THAT PRECLUDE THE MOVEMENT OF NATIVE IN-SITU SOILS AND PIPE BEDDING (i.e. TIGHT SHORING SYSTEMS).
  - EXISTING FEEDER MAIN SHALL BE EXPOSED USING HYDROVAC EXCAVATION TO CONFIRM DEPTH PRIOR TO CROSSING OF NEW WATER MAINS OR WATER SERVICES.
  - MIN. CLEARANCE FOR ALL FEEDER MAIN CROSSINGS SHALL BE 1.0m UNDER OR 0.5m OVER EXISTING FEEDER MAIN.
  - THE CONTRACTOR SHALL CONSULT WITH MANITOBA HYDRO FOR HIGH PRESSURE GAS MAIN CROSSING REQUIREMENTS. FULL TIME SAFETY WATCH AND HYDROVAC EXCAVATION TO CONFIRM DEPTHS PRIOR TO CROSSING IS REQUIRED.

FOR INDEX SEE D-16845

NOTE: ALL VALVES TO BE INSTALLED COUNTERCLOCKWISE TO CLOSE

**ENGINEERS GEOSCIENTISTS MANITOBA**  
 Certificate of Authorization MORRISON HERSHFIELD No. 1736

**METRIC**  
 WHOLE NUMBERS INDICATE MILLIMETRES  
 DECIMALIZED NUMBERS INDICATE METRES  
 UNLESS OTHERWISE NOTED

**WARNING**  
 IF POWER EQUIPMENT OR EXPLOSIVES ARE TO BE USED FOR EXCAVATION ON THIS PROJECT THE CONTRACTOR MUST:

- NOTIFY THE GAS COMPANY OF THE PROPOSED LOCATION OF EXCAVATION.
- TAKE PRECAUTION TO AVOID DAMAGE TO GAS COMPANY INSTALLATIONS.

SEE PROVINCIAL REGULATION 210/72 FOR DETAILS

**LOCATION APPROVED UNDERGROUND STRUCTURES**

SUPV. U/G STRUCTURES COMMITTEE DATE

NOTE:  
 LOCATION OF UNDERGROUND STRUCTURES AS SHOWN ARE BASED ON THE BEST INFORMATION AVAILABLE BUT NO GUARANTEE IS GIVEN THAT ALL EXISTING UTILITIES ARE SHOWN OR THAT THE GIVEN LOCATIONS ARE EXACT. CONFIRMATION OF EXISTENCE AND EXACT LOCATION OF ALL SERVICES MUST BE OBTAINED FROM THE INDIVIDUAL UTILITIES BEFORE PROCEEDING WITH CONSTRUCTION.

VERTICAL DATUM: CGVD28 (HT2.0 Geoid)  
 HORIZONTAL DATUM: NAD83 (June 1990), Zone 14

NO.	REVISIONS	YYYY/MM/DD	BY
0	ISSUED FOR CONSTRUCTION	2024/03/12	NJK

**MH MORRISON HERSHFIELD** now **Stantec**

DESIGNED BY: JKH  
 CHECKED BY: NJK  
 DRAWN BY: DML  
 APPROVED BY: ADB

SCALE:  
 HORIZONTAL 1:250  
 VERTICAL 1:50

RELEASED FOR CONSTRUCTION  
 RYAN LUCKY

DATE: MARCH 12, 2024  
 DATE: MARCH 11, 2024

PLOT DATE: 2024 03 12

ENGINEER'S SEAL  
 CONSULTANT DRAWING NUMBER

**THE CITY OF WINNIPEG**  
 WATER AND WASTE DEPARTMENT  
 ENGINEERING SERVICES DIVISION

2024 WATER MAIN RENEWALS  
 CONTRACT 6  
**INKSTER BOULEVARD**  
 18m E OF ANDREWS STREET TO  
 33m W OF POWERS STREET

SHEET 5 OF 12  
 CITY DRAWING NUMBER  
**D-16848**

TENDER NUMBER: 162-2024  
 CONTRACT NUMBER: 6  
 FILE PATH: X:\Proj\2023\230367800-2023-2025 McGregor-Inkster Renewals\09\_CAD\Water Main Renewal\07\_Sheets\  
 FILE NAME: 2303678-Sheet-03.dwg