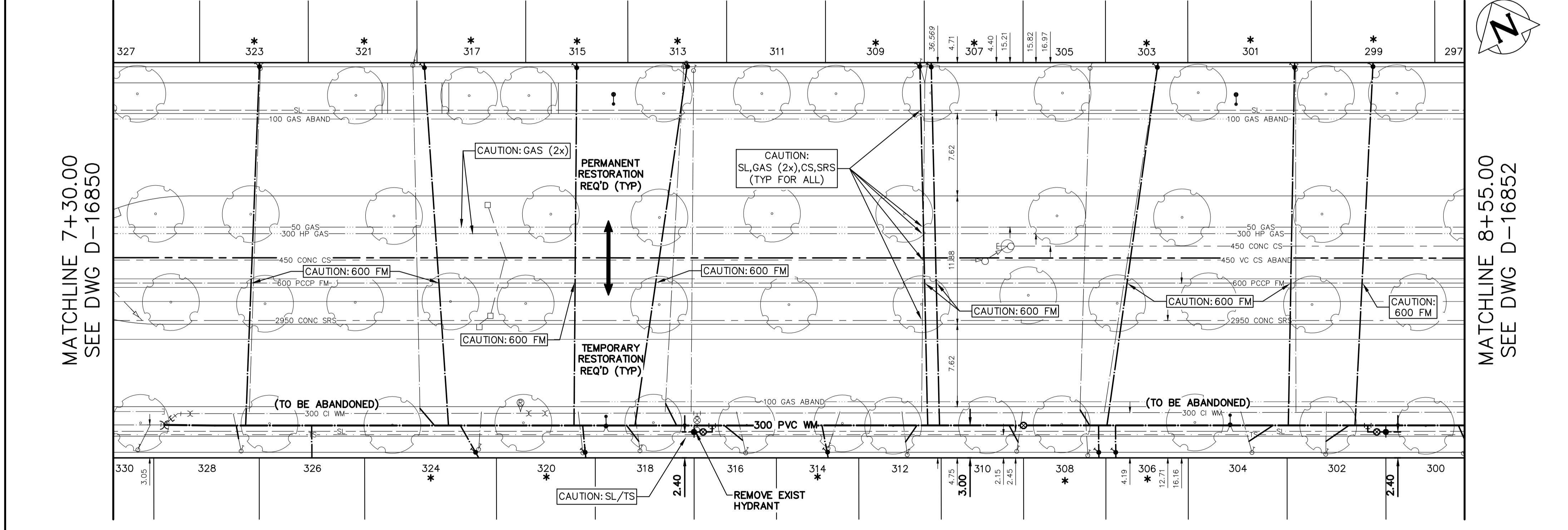


WATER SERVICE INFORMATION					
ADDRESS	SIZE (mm) MATERIAL (STREET)	SIZE (mm) MATERIAL (PROP.)	SHORT & LONG MEASUREMENTS	CORP. LOCATION	REMARKS
* 299 INKSTER BLVD RESIDENTIAL	20 LEAD	20 LEAD	2.40 WWL HSE 66.189 WWL AIKINS ST	OPP OF S/C	RENEW TO P/L W/20 CU WYED W/30L, SEPARATE SERVICES
300 INKSTER BLVD RESIDENTIAL	20 CU	20 CU	0.30 WEL HSE 50.738 WWL AIKINS ST	-	RENEW TO P/L W/20 CU WYED W/298, SEPARATE SERVICES
* 301 INKSTER BLVD RESIDENTIAL	20 LEAD	20 LEAD	2.40 WWL HSE #299 66.189 WWL AIKINS ST	OPP OF S/C	RENEW TO P/L W/20 CU WYED W/299, SEPARATE SERVICES
302 INKSTER BLVD RESIDENTIAL	20 CU	20 CU	3.05 WEL HSE 63.454 WWL AIKINS ST	1.2 E OF S/C	RECONNECT SERVICE
* 303 INKSTER BLVD RESIDENTIAL	20 CU	20 CU	2.49 EWL HSE 85.201 WWL AIKINS ST	5.0 W OF S/C	RECONNECT SERVICE WYED W/305, SEPARATE SERVICES
304 INKSTER BLVD RESIDENTIAL	20 CU	20 CU	0.61 WEL HSE 70.282 WWL AIKINS ST	0.3 W OF S/C	RECONNECT SERVICE
305 INKSTER BLVD RESIDENTIAL	20 CU	20 CU	0.53 WEL HSE 85.201 WWL AIKINS ST	1.0 W OF S/C	RENEW TO P/L W/20 CU WYED W/303, SEPARATE SERVICES
* 306 INKSTER BLVD RESIDENTIAL	16 LEAD	12 LEAD	0.30 WEL HSE #308 85.471 WWL AIKINS ST	0.8 W OF S/C	RENEW TO P/L W/20 CU WYED W/308, SEPARATE SERVICES
* 307 INKSTER BLVD RESIDENTIAL	- LEAD	- LEAD	0.91 WWL HSE -	-	RENEW TO P/L W/20 CU WYED W/309, SEPARATE SERVICES
* 308 INKSTER BLVD RESIDENTIAL	16 LEAD	16 LEAD	0.30 WEL HSE 85.471 WWL AIKINS ST	0.8 W OF S/C	RENEW TO P/L W/20 CU WYED W/305, SEPARATE SERVICES
* 309 INKSTER BLVD RESIDENTIAL	- CU	- CU	0.91 EEL HSE 80.268 EEL SALTER ST	-	RENEW TO P/L W/20 CU WYED W/307, SEPARATE SERVICES
310 INKSTER BLVD RESIDENTIAL	20 CU	12 LEAD	OPP EL HSE 89.271 EEL SALTER ST	0.6 E OF S/C	RECONNECT SERVICE
311 INKSTER BLVD RESIDENTIAL	20 CU	20 CU	2.60 WWL HSE -	1.2 W OF S/C	RECONNECT SERVICE
312 INKSTER BLVD RESIDENTIAL	20 CU	20 CU	3.05 WEL HSE 79.135 EEL SALTER ST	0.6 W OF S/C	RECONNECT SERVICE
* 313 INKSTER BLVD RESIDENTIAL	20 CU	20 CU	2.29 WEL HSE 59.399 EEL SALTER ST	1.2 E OF S/C	RECONNECT SERVICE WYED W/315, SEPARATE SERVICES
* 314 INKSTER BLVD RESIDENTIAL	12 LEAD	12 LEAD	2.44 WEL HSE 71.818 EEL SALTER ST	0.9 E OF S/C	RENEW TO P/L W/20 CU
* 315 INKSTER BLVD RESIDENTIAL	20 CU	20 CU	2.29 WEL HSE #313 58.489 EEL SALTER ST	1.2 E OF S/C	RENEW TO P/L W/20 CU WYED W/313, SEPARATE SERVICES
316 INKSTER BLVD RESIDENTIAL	20 CU	12 LEAD	1.83 WEL HSE 64.200 EEL SALTER ST	0.9 W OF S/C	RECONNECT SERVICE
317 INKSTER BLVD RESIDENTIAL	16 CU	16 CU	0.71 EEL HSE #321 33.434 EEL SALTER ST	0.6 E OF S/C	RECONNECT SERVICE WYED W/321, SEPARATE SERVICES
* 318 INKSTER BLVD RESIDENTIAL	20 CU	20 CU	3.35 WEL HSE 54.423 EEL SALTER ST	0.3 W OF S/C	RECONNECT SERVICE
* 320 INKSTER BLVD RESIDENTIAL	12 LEAD	12 LEAD	0.40 WEL HSE 49.341 EEL SALTER ST	0.7 W OF S/C	RENEW TO P/L W/20 CU
* 321 INKSTER BLVD RESIDENTIAL	16 CU	16 CU	0.71 EEL HSE -	0.6 E OF S/C	RECONNECT SERVICE WYED W/317, SEPARATE SERVICES
* 323 INKSTER BLVD RESIDENTIAL	20 LEAD	20 LEAD	2.13 WEL HSE 19.330 EEL SALTER ST	1.2 W OF S/C	RENEW TO P/L W/20 CU
* 324 INKSTER BLVD RESIDENTIAL	12 LEAD	12 LEAD	0.76 WEL HSE 39.499 EEL SALTER ST	OPP OF S/C	RENEW TO P/L W/20 CU
326 INKSTER BLVD RESIDENTIAL	- LEAD	- LEAD	1.60 WWL HSE -	0.8 W OF S/C	MATERIAL TYPE TO BE CONFIRMED IN FIELD
328 INKSTER BLVD RESIDENTIAL	- CU	- CU	1.80 WEL HSE 17.523 EEL SALTER ST	0.6 W OF S/C	MATERIAL TYPE TO BE CONFIRMED IN FIELD
330 INKSTER BLVD RESIDENTIAL	12 CU	12 CU	0.73 WEL HSE 7.973 EEL SALTER ST	1.2 E OF S/C	OUTSIDE RENEWAL LIMITS

NOTE: CHAINAGES SHOWN ARE ALONG S. R. OF INKSTER BLVD

INKSTER BOULEVARD



- CONSTRUCTION NOTES**
- EXCAVATIONS WITHIN 3.0m OF THE OUTSIDE EDGE OF A FEEDER MAIN (EXCLUDING HYDROVAC HOLES) AND WHICH EXTEND BELOW THE OBVERT OF THE FEEDER MAIN SHALL UTILIZE SHORING METHODS THAT PRECLUDE THE MOVEMENT OF NATIVE IN-SITU SOILS AND PIPE BEDDING (I.e. TIGHT SHORING SYSTEMS).
 - EXISTING FEEDER MAIN SHALL BE EXPOSED USING HYDROVAC EXCAVATION TO CONFIRM DEPTH PRIOR TO CROSSING OF NEW WATER MAINS OR WATER SERVICES.
 - MIN. CLEARANCE FOR ALL FEEDER MAIN CROSSINGS SHALL BE 1.0m UNDER OR 0.5m OVER EXISTING FEEDER MAIN.
 - THE CONTRACTOR SHALL CONSULT WITH MANITOBA HYDRO FOR HIGH PRESSURE GAS MAIN CROSSING REQUIREMENTS. FULL TIME SAFETY WATCH AND HYDROVAC EXCAVATION TO CONFIRM DEPTHS PRIOR TO CROSSING IS REQUIRED.

FOR INDEX SEE D-16845

NOTE: ALL VALVES TO BE INSTALLED COUNTERCLOCKWISE TO CLOSE

ENGINEERS GEOSCIENTISTS MANITOBA
 Certificate of Authorization MORRISON HERSHFIELD No. 1736

METRIC
 WHOLE NUMBERS INDICATE MILLIMETRES
 DECIMALIZED NUMBERS INDICATE METRES
 UNLESS OTHERWISE NOTED

WARNING

IF POWER EQUIPMENT OR EXPLOSIVES ARE TO BE USED FOR EXCAVATION ON THIS PROJECT THE CONTRACTOR MUST:

- NOTIFY THE GAS COMPANY OF THE PROPOSED LOCATION OF EXCAVATION.
- TAKE PRECAUTION TO AVOID DAMAGE TO GAS COMPANY INSTALLATIONS.

SEE PROVINCIAL REGULATION 210/72 FOR DETAILS

LOCATION APPROVED UNDERGROUND STRUCTURES

SUPV. U/G STRUCTURES COMMITTEE DATE

NOTE:
 LOCATION OF UNDERGROUND STRUCTURES AS SHOWN ARE BASED ON THE BEST INFORMATION AVAILABLE BUT NO GUARANTEE IS GIVEN THAT ALL EXISTING UTILITIES ARE SHOWN OR THAT THE GIVEN LOCATIONS ARE EXACT. CONFIRMATION OF EXISTENCE AND EXACT LOCATION OF ALL SERVICES MUST BE OBTAINED FROM THE INDIVIDUAL UTILITIES BEFORE PROCEEDING WITH CONSTRUCTION.

VERTICAL DATUM: CGVD28 (HT2.0 Geoid)
 HORIZONTAL DATUM: NAD83 (June 1990), Zone 14

NO.	ISSUED FOR CONSTRUCTION	DATE	BY
0	ISSUED FOR CONSTRUCTION	2024/03/12	NJK
	REVISIONS	YYYY/MM/DD	BY

MORRISON HERSHFIELD now **Stantec**

DESIGNED BY: JKH
 CHECKED BY: NJK
 DRAWN BY: DML
 APPROVED BY: ADB

SCALE:
 HORIZONTAL 1:250
 VERTICAL 1:50

RELEASED FOR CONSTRUCTION
 RYAN LUCKY

DATE: MARCH 12, 2024
 DATE: MARCH 11, 2024

PLOT DATE: 2024 03 12

ENGINEER'S SEAL

CONSULTANT DRAWING NUMBER

THE CITY OF WINNIPEG
 WATER AND WASTE DEPARTMENT
 ENGINEERING SERVICES DIVISION

2024 WATER MAIN RENEWALS
 CONTRACT 6
 INKSTER BOULEVARD
 6m E OF SALTER STREET TO
 51m W OF AIKINS STREET

SHEET 8 OF 12
 CITY DRAWING NUMBER
 D-16851

TENDER NUMBER: 162-2024
 CONTRACT NUMBER: 6

FILE PATH: X:\Proj\2023\230367800-2023-2025 McGregor-Inkster Renewals\09. CAD\Water Main Renewal\07 Sheets\
 FILE NAME: 2303678-Sheet-03.dwg