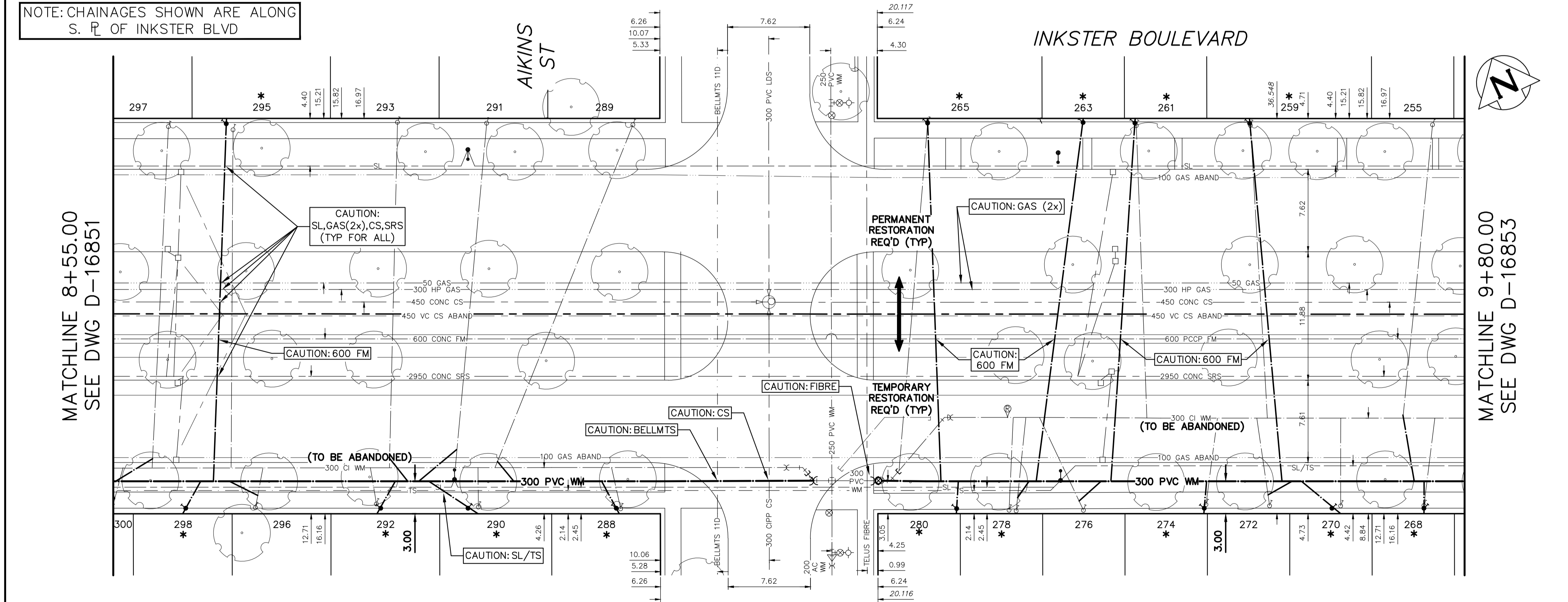


WATER SERVICE INFORMATION					
ADDRESS	SIZE (mm) MATERIAL (STREET)	SIZE (mm) MATERIAL (PROP.)	SHORT & LONG MEASUREMENTS	CORP. LOCATION	REMARKS
255 INKSTER BLVD	20	20	1.52 WEL HSE	OPP OF S/C	RECONNECT SERVICE
RESIDENTIAL	CU	CU	51.389 EEL AIKINS ST	-	-
* 259 INKSTER BLVD	16	12	2.13 EWL HSE	0.9 E OF S/C	RENEW TO P/L W/20 CU
RESIDENTIAL	LEAD	LEAD	34.532 EEL AIKINS ST	-	-
* 261 INKSTER BLVD	16	16	0.61 EWL HSE	1.2 E OF S/C	RENEW TO P/L W/20 CU
RESIDENTIAL	LEAD	LEAD	23.958 EEL AIKINS ST	-	WYED W/263, SEPARATE SERVICES
* 263 INKSTER BLVD	16	16	0.61 EWL HSE	1.2 E OF S/C	RENEW TO P/L W/20 CU
RESIDENTIAL	LEAD	LEAD	-	-	WYED W/263, SEPARATE SERVICES
* 265 INKSTER BLVD	12	12	2.71 EWL HSE	2.6 W OF S/C	RENEW TO P/L W/20 CU
RESIDENTIAL	LEAD	LEAD	4.660 EEL AIKINS ST	-	-
* 268 INKSTER BLVD	12	20	1.83 WEL HSE	0.6 W OF S/C	RENEW TO P/L W/20 CU
RESIDENTIAL	LEAD	CU	50.509 EEL AIKINS ST	-	-
* 270 INKSTER BLVD	20	20	1.83 WEL HSE	OPP OF S/C	RENEW TO P/L W/20 CU
RESIDENTIAL	LEAD	LEAD	42.809 EEL AIKINS ST	-	-
* 272 INKSTER BLVD	20	20	0.76 WEL HSE	0.3 W OF S/C	RECONNECT SERVICE
RESIDENTIAL	CU	LEAD	36.230 EEL AIKINS ST	-	-
* 274 INKSTER BLVD	16	20	1.22 EEL HSE	0.9 E OF S/C	RENEW TO P/L W/20 CU
RESIDENTIAL	LEAD	CU	30.348 EEL AIKINS ST	-	-
* 276 INKSTER BLVD	20	20	3.35 EWL HSE	4.3 W OF S/C	RECONNECT SERVICE
RESIDENTIAL	CU	CU	19.088 EEL AIKINS ST	-	-
* 278 INKSTER BLVD	20	12	1.22 WEL HSE	0.6 E OF S/C	RECONNECT SERVICE
RESIDENTIAL	CU	LEAD	12.795 EEL AIKINS ST	-	WYED W/280, SEPARATE SERVICES
* 280 INKSTER BLVD	20	12	1.83 WEL HSE	OPP OF S/C	RENEW TO P/L W/20 CU
RESIDENTIAL	CU	CU	12.134 EEL AIKINS ST	-	WYED W/278, SEPARATE SERVICES
* 288 INKSTER BLVD	12	12	1.83 WEL HSE	0.6 W OF S/C	RENEW TO P/L W/20 CU
RESIDENTIAL	LEAD	LEAD	3.678 WWL AIKINS ST	-	-
* 289 INKSTER BLVD	20	20	3.81 EWL HSE	2.7 W OF S/C	RECONNECT SERVICE
RESIDENTIAL	CU	CU	2.484 WWL AIKINS ST	-	-
* 290 INKSTER BLVD	12	12	2.77 EWL HSE	OPP OF S/C	RENEW TO P/L W/20 CU
RESIDENTIAL	LEAD	LEAD	16.839 WWL AIKINS ST	-	-
* 291 INKSTER BLVD	20	20	3.35 EWL HSE	2.3 W OF S/C	RECONNECT SERVICE
RESIDENTIAL	LEAD	LEAD	39.478 WWL AIKINS ST	-	WYED W/297, SEPARATE SERVICES
* 292 INKSTER BLVD	12	12	4.57 WEL HSE	OPP OF S/C	RENEW TO P/L W/20 CU
RESIDENTIAL	LEAD	LEAD	26.266 WWL AIKINS ST	-	-
* 293 INKSTER BLVD	20	20	2.29 WEL HSE	OPP OF S/C	RECONNECT SERVICE
RESIDENTIAL	CU	CU	24.261 WWL AIKINS ST	-	-
* 295 INKSTER BLVD	20	20	0.91 EWL HSE	0.3 E OF S/C	RENEW TO P/L W/20 CU
RESIDENTIAL	LEAD	LEAD	39.478 WWL AIKINS ST	-	WYED W/297, SEPARATE SERVICES
* 296 INKSTER BLVD	20	20	2.20 EWL HSE	0.3 E OF S/C	RECONNECT SERVICE
RESIDENTIAL	CU	CU	37.453 WWL AIKINS ST	-	-
* 297 INKSTER BLVD	20	20	1.37 WEL HSE	1.4 W OF S/C	RECONNECT SERVICE
RESIDENTIAL	CU	CU	45.456 WWL AIKINS ST	-	WYED W/295, SEPARATE SERVICES
* 298 INKSTER BLVD	20	12	2.13 WEL HSE	1.2 E OF S/C	RENEW TO P/L W/20 CU
RESIDENTIAL	LEAD	LEAD	51.53 WWL AIKINS	-	WYED W/300, SEPARATE SERVICES

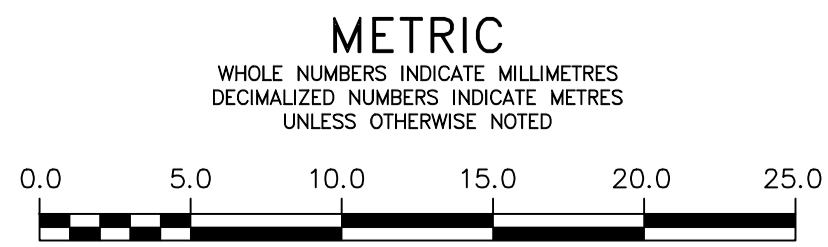
NOTE: CHAINAGES SHOWN ARE ALONG S. R. OF INKSTER BLVD



- ### CONSTRUCTION NOTES
- EXCAVATIONS WITHIN 3.0m OF THE OUTSIDE EDGE OF A FEEDER MAIN (EXCLUDING HYDROVAC HOLES) AND WHICH EXTEND BELOW THE OBVERT OF THE FEEDER MAIN SHALL UTILIZE SHORING METHODS THAT PRECLUDE THE MOVEMENT OF NATIVE IN-SITU SOILS AND PIPE BEDDING (i.e. TIGHT SHORING SYSTEMS).
 - EXISTING FEEDER MAIN SHALL BE EXPOSED USING HYDROVAC EXCAVATION TO CONFIRM DEPTH PRIOR TO CROSSING OF NEW WATER MAINS OR WATER SERVICES.
 - MIN. CLEARANCE FOR ALL FEEDER MAIN CROSSINGS SHALL BE 1.0m UNDER OR 0.5m OVER EXISTING FEEDER MAIN.
 - THE CONTRACTOR SHALL CONSULT WITH MANITOBA HYDRO FOR HIGH PRESSURE GAS MAIN CROSSING REQUIREMENTS. FULL TIME SAFETY WATCH AND HYDROVAC EXCAVATION TO CONFIRM DEPTHS PRIOR TO CROSSING IS REQUIRED.

FOR INDEX SEE D-16845

NOTE: ALL VALVES TO BE INSTALLED COUNTERCLOCKWISE TO CLOSE



WARNING
IF POWER EQUIPMENT OR EXPLOSIVES ARE TO BE USED FOR EXCAVATION ON THIS PROJECT THE CONTRACTOR MUST:
1) NOTIFY THE GAS COMPANY OF THE PROPOSED LOCATION OF EXCAVATION.
2) TAKE PRECAUTION TO AVOID DAMAGE TO GAS COMPANY INSTALLATIONS.
SEE PROVINCIAL REGULATION 210/72 FOR DETAILS

LOCATION APPROVED UNDERGROUND STRUCTURES
SUPV. U/C STRUCTURES COMMITTEE DATE
NOTE:
LOCATION OF UNDERGROUND STRUCTURES AS SHOWN ARE BASED ON THE BEST INFORMATION AVAILABLE BUT NO GUARANTEE IS GIVEN THAT ALL EXISTING UTILITIES ARE SHOWN OR THAT THE GIVEN LOCATIONS ARE EXACT. CONFIRMATION OF EXISTENCE AND EXACT LOCATION OF ALL SERVICES MUST BE OBTAINED FROM THE INDIVIDUAL UTILITIES BEFORE PROCEEDING WITH CONSTRUCTION.

VERTICAL DATUM: CGVD28 (HT2.0 Geoid)
HORIZONTAL DATUM: NAD83 (June 1990), Zone 14

NO.	ISSUED FOR CONSTRUCTION	DATE	BY
0	ISSUED FOR CONSTRUCTION	2024/03/12	NJK
	REVISIONS	YYYY/MM/DD	BY

MH MORRISON HERSHFIELD now **Stantec**

DESIGNED BY: JKH	CHECKED BY: NJK
DRAWN BY: DML	APPROVED BY: ADB
SCALE: HORIZONTAL 1:250 VERTICAL 1:50	RELEASED FOR CONSTRUCTION RYAN LUCKY
DATE: MARCH 12, 2024	DATE: MARCH 11, 2024

PLOT DATE: 2024 03 12

ENGINEER'S SEAL
CONSULTANT DRAWING NUMBER

THE CITY OF WINNIPEG
WATER AND WASTE DEPARTMENT
ENGINEERING SERVICES DIVISION

2024 WATER MAIN RENEWALS
CONTRACT 6
INKSTER BOULEVARD
51m W OF AIKINS STREET TO
54m E OF AIKINS STREET

SHEET 9 OF 12
CITY DRAWING NUMBER
D-16852

TENDER NUMBER: 162-2024
CONTRACT NUMBER: 6
FILE PATH: X:\Proj\2023\230367800-2023-2025 McGregor-Inkster Renewals\09_CAD\Water Main Renewal\07_Sheets\
FILE NAME: 2303678-Sheet-03.dwg