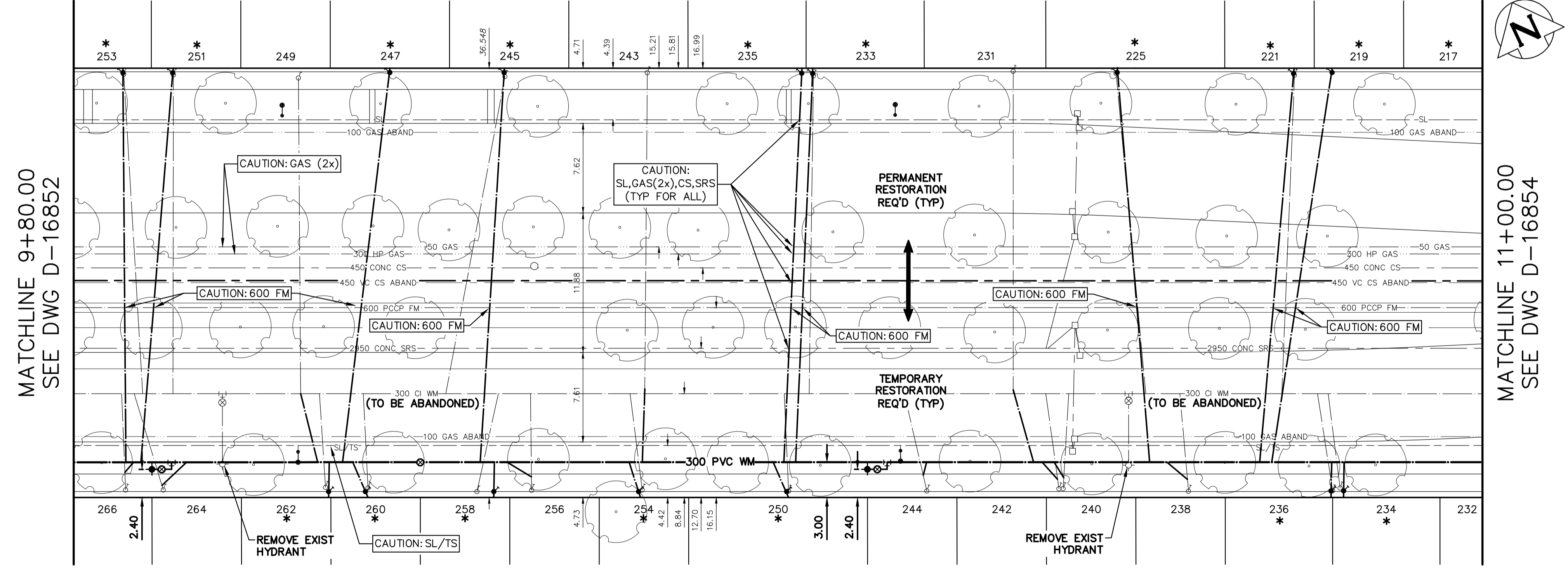


| WATER SERVICE INFORMATION | | | | | |
|--------------------------------|-----------|-----------|---------------------------|----------------|--|
| ADDRESS | SIZE (mm) | SIZE (mm) | SHORT & LONG MEASUREMENTS | CORP. LOCATION | REMARKS |
| * 217 INKSTER BLVD RESIDENTIAL | 12 | 12 | 2.59 EEL HSE | 0.3 E OF S/C | MATERIAL TYPE TO BE CONFIRMED IN FIELD |
| * 219 INKSTER BLVD RESIDENTIAL | 16 | 16 | 4.57 WWL CHARLES ST | 1.2 W OF S/C | RENEW TO P/L W/20 CU WYED W/221, SEPARATE SERVICES |
| * 221 INKSTER BLVD RESIDENTIAL | 16 | 16 | 0.91 WEL HSE #221 | 1.2 W OF S/C | RENEW TO P/L W/20 CU WYED W/219, SEPARATE SERVICES |
| * 225 INKSTER BLVD RESIDENTIAL | 20 | 20 | 5.18 WEL HSE | 2.4 E OF S/C | RENEW TO P/L W/20 CU |
| * 231 INKSTER BLVD RESIDENTIAL | 16 | 16 | 61.870 WWL CHARLES ST | OPP OF S/C | RECONNECT SERVICE |
| * 233 INKSTER BLVD RESIDENTIAL | 16 | 16 | 0.30 WWL HSE #233 | OPP OF S/C | RENEW TO P/L W/20 CU WYED W/235, SEPARATE SERVICES |
| * 234 INKSTER BLVD RESIDENTIAL | 16 | 16 | 0.30 WWL HSE | 0.6 W OF S/C | RENEW TO P/L W/20 CU WYED W/236, SEPARATE SERVICES |
| * 235 INKSTER BLVD RESIDENTIAL | 16 | 16 | 0.30 WWL HSE #233 | OPP OF S/C | RENEW TO P/L W/20 CU WYED W/233, SEPARATE SERVICES |
| * 236 INKSTER BLVD RESIDENTIAL | 16 | 12 | 1.52 EEL HSE | 0.6 W OF S/C | RENEW TO P/L W/20 CU WYED W/234, SEPARATE SERVICES |
| * 238 INKSTER BLVD RESIDENTIAL | 20 | 12 | 2.29 WEL HSE | 0.6 W OF S/C | RECONNECT SERVICE |
| * 240 INKSTER BLVD RESIDENTIAL | 20 | 20 | 2.29 WEL HSE | 0.6 W OF S/C | RECONNECT SERVICE |
| * 242 INKSTER BLVD RESIDENTIAL | 20 | 20 | 0.46 WEL HSE | 0.9 E OF S/C | RECONNECT SERVICE |
| * 243 INKSTER BLVD RESIDENTIAL | 20 | 20 | 2.30 WEL HSE | 0.6 W OF S/C | RECONNECT SERVICE |
| * 244 INKSTER BLVD RESIDENTIAL | 20 | 12 | 1.68 WEL HSE | 0.3 W OF S/C | RECONNECT SERVICE |
| * 245 INKSTER BLVD RESIDENTIAL | 16 | 16 | 3.05 EWL HSE | 4.6 W OF S/C | RENEW TO P/L W/20 CU WYED W/247, SEPARATE SERVICES |
| * 247 INKSTER BLVD RESIDENTIAL | 16 | 16 | 3.05 EWL HSE | 4.6 W OF S/C | RENEW TO P/L W/20 CU WYED W/245, SEPARATE SERVICES |
| * 249 INKSTER BLVD RESIDENTIAL | 20 | 12 | 2.29 WEL HSE | 0.2 E OF S/C | RECONNECT SERVICE |
| * 250 INKSTER BLVD RESIDENTIAL | 20 | 20 | 3.05 WEL HSE | OPP OF S/C | RENEW TO P/L W/20 CU |
| * 251 INKSTER BLVD RESIDENTIAL | 16 | 12 | 1.22 EWL HSE | 0.5 W OF S/C | RENEW TO P/L W/20 CU |
| * 253 INKSTER BLVD RESIDENTIAL | 20 | 20 | 2.13 WEL HSE | OPP OF S/C | RENEW TO P/L W/20 CU |
| * 254 INKSTER BLVD RESIDENTIAL | 12 | 20 | 2.44 WEL HSE | 0.9 W OF S/C | RENEW TO P/L W/20 CU |
| * 256 INKSTER BLVD RESIDENTIAL | 20 | 12 | 0.91 EEL HSE | 0.3 W OF S/C | RECONNECT SERVICE |
| * 258 INKSTER BLVD RESIDENTIAL | 12 | 12 | 2.13 EWL HSE | OPP OF S/C | RENEW TO P/L W/20 CU |
| * 260 INKSTER BLVD RESIDENTIAL | 12 | 20 | 2.44 WEL HSE | 0.3 W OF S/C | RENEW TO P/L W/20 CU |
| * 262 INKSTER BLVD RESIDENTIAL | 12 | 16 | 0.00 EEL HSE | 0.6 W OF S/C | RENEW TO P/L W/20 CU |
| * 264 INKSTER BLVD RESIDENTIAL | 20 | 12 | 0.30 EWL HSE | 2.7 W OF S/C | RECONNECT SERVICE |
| * 266 INKSTER BLVD RESIDENTIAL | 20 | 20 | 1.07 WEL HSE | OPP OF S/C | RECONNECT SERVICE |
| * 268 INKSTER BLVD RESIDENTIAL | 20 | 20 | 58.696 EEL AIKINS ST | | |

NOTE: CHAINAGES SHOWN ARE ALONG S. R. OF INKSTER BLVD

INKSTER BOULEVARD



- ### CONSTRUCTION NOTES
- EXCAVATIONS WITHIN 3.0m OF THE OUTSIDE EDGE OF A FEEDER MAIN (EXCLUDING HYDROVAC HOLES) AND WHICH EXTEND BELOW THE OBVERT OF THE FEEDER MAIN SHALL UTILIZE SHORING METHODS THAT PRECLUDE THE MOVEMENT OF NATIVE IN-SITU SOILS AND PIPE BEDDING (i.e. TIGHT SHORING SYSTEMS).
 - EXISTING FEEDER MAIN SHALL BE EXPOSED USING HYDROVAC EXCAVATION TO CONFIRM DEPTH PRIOR TO CROSSING OF NEW WATER MAINS OR WATER SERVICES.
 - MIN. CLEARANCE FOR ALL FEEDER MAIN CROSSINGS SHALL BE 1.0m UNDER OR 0.5m OVER EXISTING FEEDER MAIN.
 - THE CONTRACTOR SHALL CONSULT WITH MANITOBA HYDRO FOR HIGH PRESSURE GAS MAIN CROSSING REQUIREMENTS. FULL TIME SAFETY WATCH AND HYDROVAC EXCAVATION TO CONFIRM DEPTHS PRIOR TO CROSSING IS REQUIRED.

FOR INDEX SEE D-16845

NOTE: ALL VALVES TO BE INSTALLED COUNTERCLOCKWISE TO CLOSE

ENGINEERS GEOSCIENTISTS MANITOBA
 Certificate of Authorization
 MORRISON HERSHFIELD
 No. 1736

METRIC
 WHOLE NUMBERS INDICATE MILLIMETRES
 DECIMALIZED NUMBERS INDICATE METRES
 UNLESS OTHERWISE NOTED

WARNING

IF POWER EQUIPMENT OR EXPLOSIVES ARE TO BE USED FOR EXCAVATION ON THIS PROJECT THE CONTRACTOR MUST:

- NOTIFY THE GAS COMPANY OF THE PROPOSED LOCATION OF EXCAVATION.
- TAKE PRECAUTION TO AVOID DAMAGE TO GAS COMPANY INSTALLATIONS.

SEE PROVINCIAL REGULATION 210/72 FOR DETAILS

LOCATION APPROVED UNDERGROUND STRUCTURES

SUPV. U/G STRUCTURES COMMITTEE DATE

NOTE:
 LOCATION OF UNDERGROUND STRUCTURES AS SHOWN ARE BASED ON THE BEST INFORMATION AVAILABLE BUT NO GUARANTEE IS GIVEN THAT ALL EXISTING UTILITIES ARE SHOWN OR THAT THE GIVEN LOCATIONS ARE EXACT. CONFIRMATION OF EXISTENCE AND EXACT LOCATION OF ALL SERVICES MUST BE OBTAINED FROM THE INDIVIDUAL UTILITIES BEFORE PROCEEDING WITH CONSTRUCTION.

VERTICAL DATUM: CGVD28 (HT2.0 Geoid)
 HORIZONTAL DATUM: NADB3 (June 1990), Zone 14

| NO. | REVISIONS | YYYY/MM/DD | BY |
|-----|-------------------------|------------|-----|
| 0 | ISSUED FOR CONSTRUCTION | 2024/03/12 | NJK |

MH MORRISON HERSHFIELD now **Stantec**

DESIGNED BY: JKH
 DRAWN BY: DML
 SCALE: HORIZONTAL 1:250
 VERTICAL 1:50
 DATE: MARCH 12, 2024
 PLOT DATE: 2024 03 12

CHECKED BY: NJK
 APPROVED BY: ADB
 RELEASED FOR CONSTRUCTION
 RYAN LUCKY
 DATE: MARCH 11, 2024

ENGINEER'S SEAL

PROVINCE OF MANITOBA
 REGISTERED PROFESSIONAL ENGINEER
 N.J. KEHLER
 Member 30100
 2022-12-12

CONSULTANT DRAWING NUMBER

THE CITY OF WINNIPEG
 WATER AND WASTE DEPARTMENT
 ENGINEERING SERVICES DIVISION

2024 WATER MAIN RENEWALS
 CONTRACT 6
INKSTER BOULEVARD
 54m E OF AIKINS STREET TO
 7m W OF CHARLES STREET

SHEET 10 OF 12
 CITY DRAWING NUMBER
D-16853