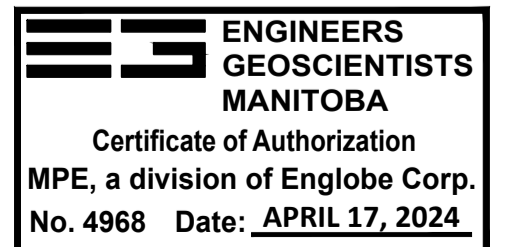


KEY OPERATING ELEVATIONS			
DESCRIPTION	GEODETIC ELEVATION (m)	REFERENCE ELEVATION (m)	NOTES
WEIR OVERFLOW	227.405	2.62	
HIGH HIGH WET WELL LEVEL	227.050	2.26	
HIGH WET WELL LEVEL	226.650	1.86	
PUMP START MAXIMUM SPEED	226.150	1.36	
PUMP START MINIMUM SPEED	225.800	1.01	
PUMP STOP	225.650	0.86	
WET WELL LOW LEVEL ALARM	225.400	0.61	
WET WELL BOTTOM	224.790	0.00	

THE INFORMATION CONTAINED IN THESE DRAWINGS SHALL BE ORIENTED IN THE SAME DATUM AS THE GIS, NAD 1983 JUNE 1990.

NO.	DRAWING NUMBER	REFERENCE DRAWING TITLE
10		
9		
8		
7		
6		
5		
4		
3		
2	1-0131L-P0004-001-00	HVAC VENTILATION AND MISCELLANEOUS
1	1-0131L-P0003-001-00	WASTEWATER LIFT PUMPING

NOTE:
1. CONTRACTOR TO VERIFY MOUNTING ELEVATION.



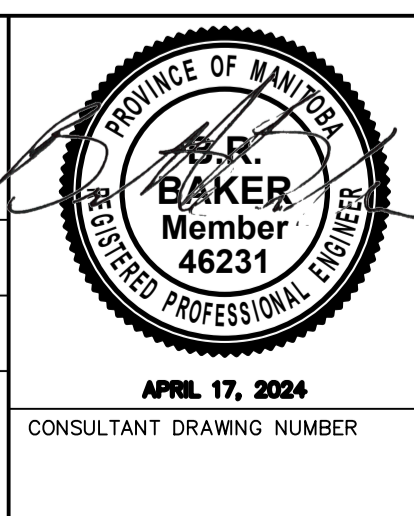
NO.	REVISIONS	DATE	BY
1	ADDENDUM 01, RE-ISSUED FOR CONSTRUCTION	2024-04-17	
0	ISSUED FOR CONSTRUCTION	2024-03-22	

MPE
a division of Englobe

DESIGNED BY: B. BAKER
CHECKED BY: M. STUSICK
DRAWN BY: D. MCMILLAN
APPROVED BY: M. STUSICK

SCALE: NOT TO SCALE
HORIZONTAL
VERTICAL

DATE: 2024-03-19



THE CITY OF WINNIPEG
WATER AND WASTE DEPARTMENT
ENGINEERING DIVISION

CONWAY LIFT PUMPING STATION
2024 UPGRADES
PROCESS AND INSTRUMENTATION DIAGRAM
WET WELL, SUMP, AND LEVEL TRANSMITTERS

CITY DRAWING NUMBER 1-0131L-P0002-001-01 SHEET 27 OF 102