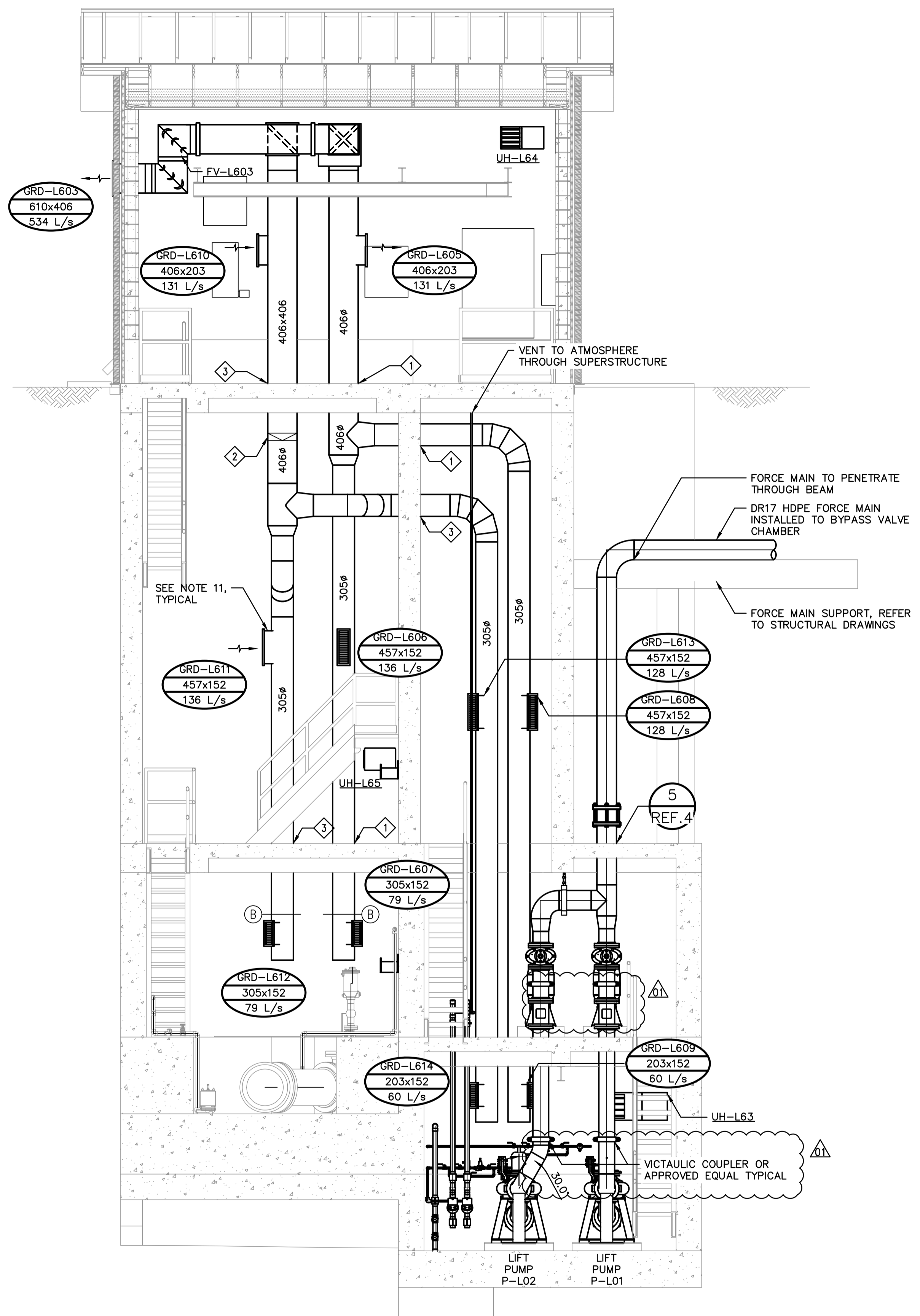


**A** LIFT STATION SECTION LOOKING SOUTH  
REF.1,2,3 SCALE: 1:40



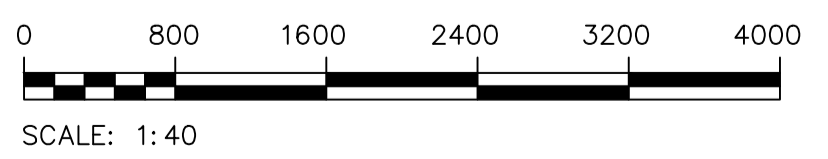
**B** LIFT STATION SECTION LOOKING WEST  
REF.1,2,3 SCALE: 1:40

- GENERAL NOTES:**
- PERFORM WORK IN ACCORDANCE WITH ALL APPLICABLE CODES AND REGULATION.
  - EQUIPMENT LOCATIONS AND PIPE ROUTING IN THE DRAWING IS APPROXIMATE ONLY. CONFIRM ALL LOCATIONS IN THE FIELD. LISTED DIMENSIONS ARE APPROXIMATE AND ARE ONLY INTENDED FOR BIDDING PURPOSES. THE CONTRACTOR IS RESPONSIBLE TO VERIFY ALL DIMENSIONS AND ROUTING IN THE FIELD FOR ORDERING EQUIPMENT AND COMMENCING INSTALLATION WITHOUT EXTRA CHARGES TO THE PROJECT.
  - CONTRACTOR TO ENSURE PIPES ARE ADEQUATELY SUPPORTED AGAINST MOVEMENT PRIOR TO PRESSURIZATION.
  - ALL EQUIPMENT SHOWN ON THIS DRAWING IS NEW AND IS TO BE PROVIDED BY THE CONTRACTOR UNLESS OTHERWISE INDICATED AS EXISTING.
  - INSTALL SHAFT GUARD SUPPLIED WITH PUMP SHAFT OR PROVIDE SHAFT MACHINE GUARDS (TYPICAL 3 EACH) IN ACCORDANCE WITH CSA Z432, SAFE GUARDING OF MACHINERY. GUARD PAINT FINISH SHALL BE SAFETY YELLOW.
  - SUPPLY AND INSTALL MAGNETIC FLOW METER IN ACCORDANCE WITH MANUFACTURER'S INSTRUCTIONS AND WITH A MINIMUM OF 5 PIPE DIAMETERS UPSTREAM AND 3 PIPE DIAMETERS DOWN STREAM OF STRAIGHT PIPE.
  - SUPPLY AND INSTALL GATE VALVE WITH MANUAL OPERATOR 1.5m MAXIMUM ABOVE THE FLOOR LEVEL.
  - FABRICATED STEEL MOTOR STAND SUPPLIED WITH PUMP TO BE BOLTED DIRECTLY TO HOUSEKEEPING PAD. PROVIDE ANCHOR BOLT DETAILS TO ENGINEER FOR REVIEW AND APPROVAL PRIOR TO INSTALLATION.
  - DRAWINGS ARE DIAGRAMMATIC AND INDICATE INTENT ONLY. PROVIDE ALL VERTICAL AND HORIZONTAL OFFSETS NOT NECESSARILY IDENTIFIED IN DRAWING IN A MANNER THAT MEETS CODE REQUIREMENTS.
  - PROVIDE DUCTING AND MISCELLANEOUS FITTINGS WHERE REQUIRED TO PROVIDE A COMPLETE AND OPERATIONAL SYSTEM.
  - HEATING AND VENTILATION EQUIPMENT SHALL BE INSTALLED AS PER MANUFACTURER'S RECOMMENDATIONS INCLUDING MEETING ALL CLEARANCE REQUIREMENTS.
  - COORDINATE ALL WORK WITH OTHER DISCIPLINES PRIOR TO ORDERING, MANUFACTURING, OR INSTALLING ANY EQUIPMENT OR MATERIALS.
  - COORDINATE EXACT LOCATION OF EXHAUST FANS AND DUCTING SO AS TO NOT BE IN CONFLICT WITH CABLE TRAYS, PIPING, ETC.
  - HEATING AND COOLING CONTROLS ARE TO BE SUPPLIED BY MECHANICAL CONTRACTOR. SENSORS AND CONTROL WIRING ARE TO BE INSTALLED BY ELECTRICAL CONTRACTOR. DEVICES REQUIRING MECHANICAL CONNECTORS SUCH AS CONTROL VALVES ARE TO BE INSTALLED BY MECHANICAL CONTRACTOR.
  - EACH GRILL TO INCLUDE GBD DAMPER.

- KEY NOTES:**
- 1 SUPPLY DUCT TO RE-USE PREVIOUS DUCT PENETRATIONS. PENETRATIONS TO BE SEALED FOLLOWING DUCT INSTALLATION.
  - 2 RECTANGULAR TO CIRCULAR TRANSITION
  - 3 CORE NEW PENETRATION.

THE INFORMATION CONTAINED IN THESE DRAWINGS SHALL BE ORIENTED IN THE SAME DATUM AS THE GIS, NAD 1983 JUNE 1990.

10		
9		
8		
7		
6		
5		
4	1-0131L-M0011-001-00	TYPICAL MECHANICAL DETAILS, PIPE SUPPORTS, SEAL WATER
3	1-0131L-M0007-001-00	BASEMENT & MAIN FLOOR HVAC & PLUMBING PLAN
2	1-0131L-M0006-001-00	MOTOR & PUMP ROOM HVAC & PLUMBING PLAN
1	1-0131L-M0005-001-01	MOTOR & PUMP ROOM PROCESS PIPING PLAN
NO.	DRAWING NUMBER	REFERENCE DRAWING TITLE
		REFERENCE DRAWINGS



**METRIC**  
WHOLE NUMBERS INDICATE MILLIMETRES  
DECIMALIZED NUMBERS INDICATE METRES  
UNLESS OTHERWISE NOTED

**ES ENGINEERS GEOSCIENTISTS MANITOBA**  
Certificate of Authorization  
MPE, a division of Englobe Corp.  
No. 4968 Date: APRIL 26, 2024

B.M. ELEV.			
1	ADDENDUM 03, RE-ISSUED FOR CONSTRUCTION	2024-04-26	
0	ISSUED FOR CONSTRUCTION	2024-03-22	
NO.	REVISIONS	DATE	BY

**MPE**  
a division of Englobe

DESIGNED BY	P. NAYAK	CHECKED BY	P. GOERTZEN
DRAWN BY	D. MCMILLAN	APPROVED BY	P. GOERTZEN
SCALE:	AS SHOWN	RELEASED FOR CONSTRUCTION	
HORIZONTAL			
VERTICAL			
DATE	2024-03-19	DATE	
PLOT DATE:	2024 04 25		

PROVINCE OF MANITOBA  
**P.P. GOERTZEN**  
Member  
43822  
REGISTERED PROFESSIONAL ENGINEER  
APRIL 26, 2024  
CONSULTANT DRAWING NUMBER

**THE CITY OF WINNIPEG**  
WATER AND WASTE DEPARTMENT  
ENGINEERING DIVISION

CONWAY LIFT PUMPING STATION  
2024 UPGRADES  
**MECHANICAL PLAN**  
PLANS AND SECTIONS  
PROCESS & MECHANICAL SECTION 1

CITY DRAWING NUMBER **1-0131L-M0008-001-01** SHEET **36** OF **102**

FILE PATH: M:\N-Data\B4\00 City of Winnipeg\005 - Conway Lift Station\Autodesk\ACAD\ FILE NAME: M1.8-MECHANICAL\_SECTION\_ADD03.dwg

BID OPPORTUNITY: --