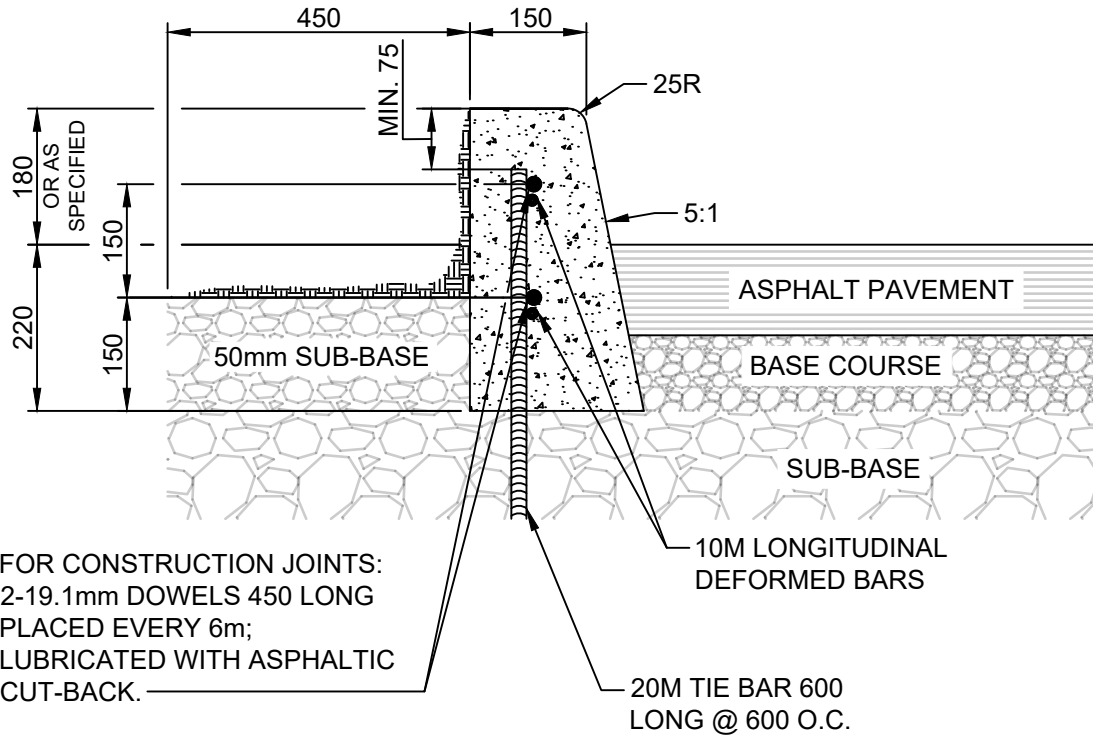


APPENDIX 'C'

VARIOUS CURBS FOR ASPHALT PAVEMENTS



NOTES:

1. TRANSVERSE SAW CUT EVERY 3m OR AT PAVEMENT JOINTS
2. TRANSVERSE SAW CUTS ARE TO BE A MAXIMUM DEPTH OF 25mm

DIMENSIONS IN MILLIMETRES



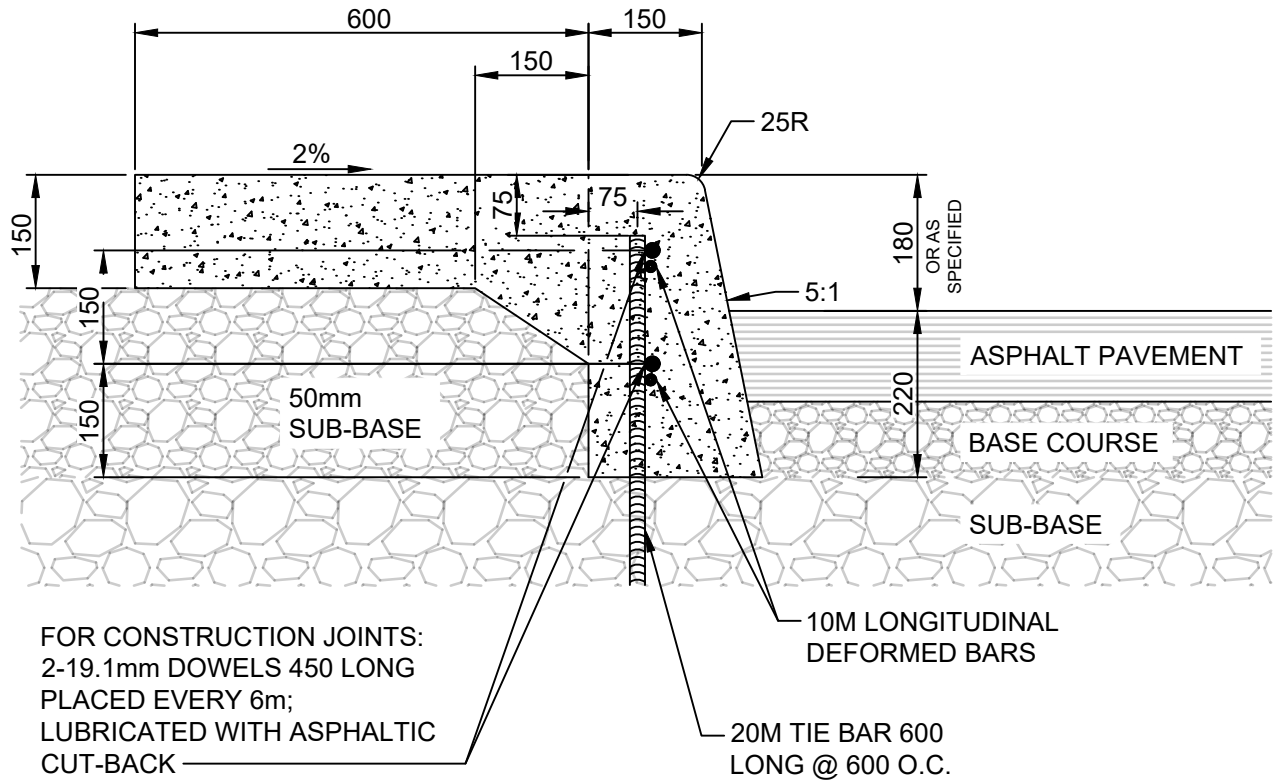
THE CITY OF WINNIPEG
PUBLIC WORKS DEPARTMENT

Reference Spec. No.
CW 3325

**BARRIER CURB FOR
ASPHALT PAVEMENT**

Revisions			
No.	Date	Description	By

Designed By: A.G.	Drawn By: R.B.	Scale : N.T.S
Checked By: B.K.	Date: 2024-03-19	
Approved: PAVEMENT MANAGEMENT BRANCH		Drawing No. SD-200A DRAFT



NOTES:

1. TRANSVERSE SAW CUT EVERY 3m OR AT PAVEMENT JOINTS
2. TRANSVERSE SAW CUTS ARE TO BE A MAXIMUM DEPTH OF 25mm

DIMENSIONS IN MILLIMETRES



THE CITY OF WINNIPEG
 PUBLIC WORKS DEPARTMENT

Reference Spec. No.
 CW 3325

Revisions

No.	Date	Description	By

**BARRIER CURB WITH INTEGRAL
 SPLASH STRIP FOR ASPHALT
 PAVEMENT**

Designed By:
 A.G.

Drawn By:
 R.B.

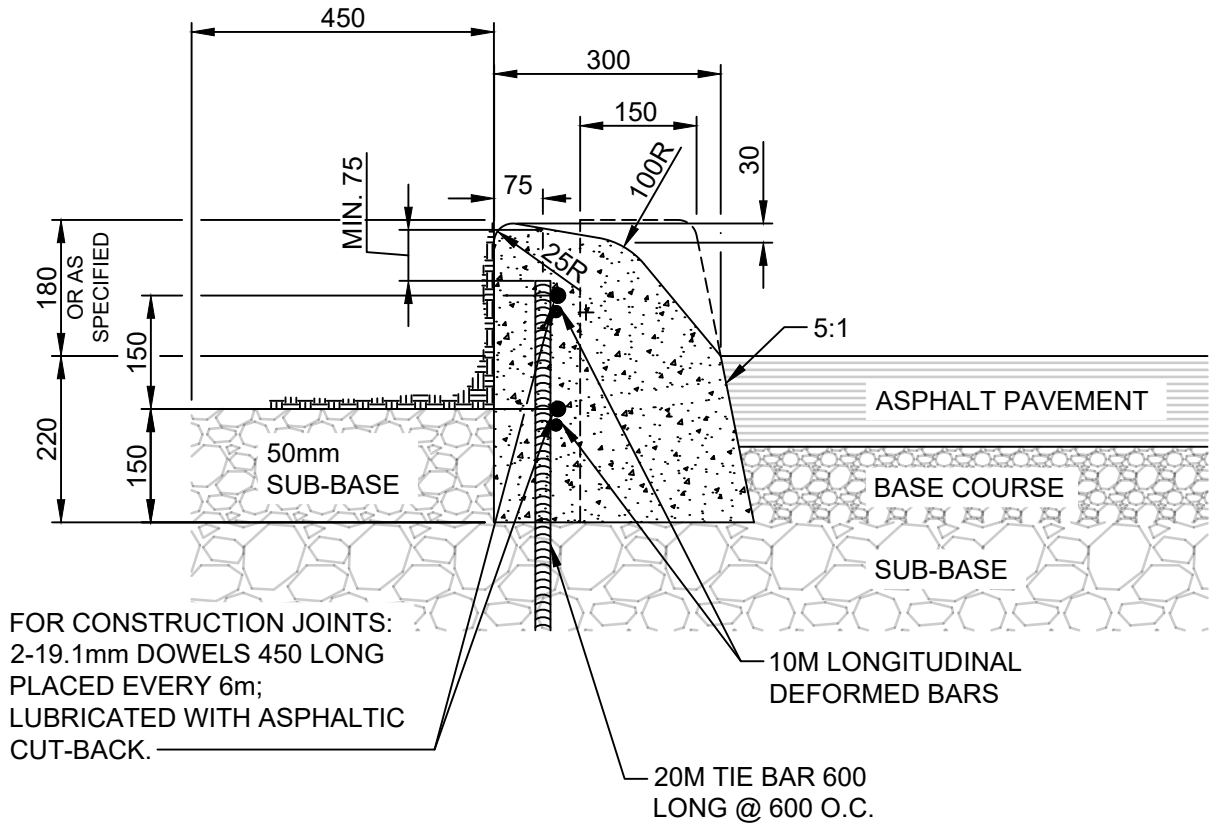
Scale :
N.T.S

Checked By:
 B.K.

Date:
 2024-03-19

Drawing No.
SD-200AA
DRAFT

Approved:
 PAVEMENT MANAGEMENT BRANCH



NOTES:

1. TRANSVERSE SAW CUT EVERY 3m OR AT PAVEMENT JOINTS
2. TRANSVERSE SAW CUTS ARE TO BE A MAXIMUM DEPTH OF 25mm

DIMENSIONS IN MILLIMETRES



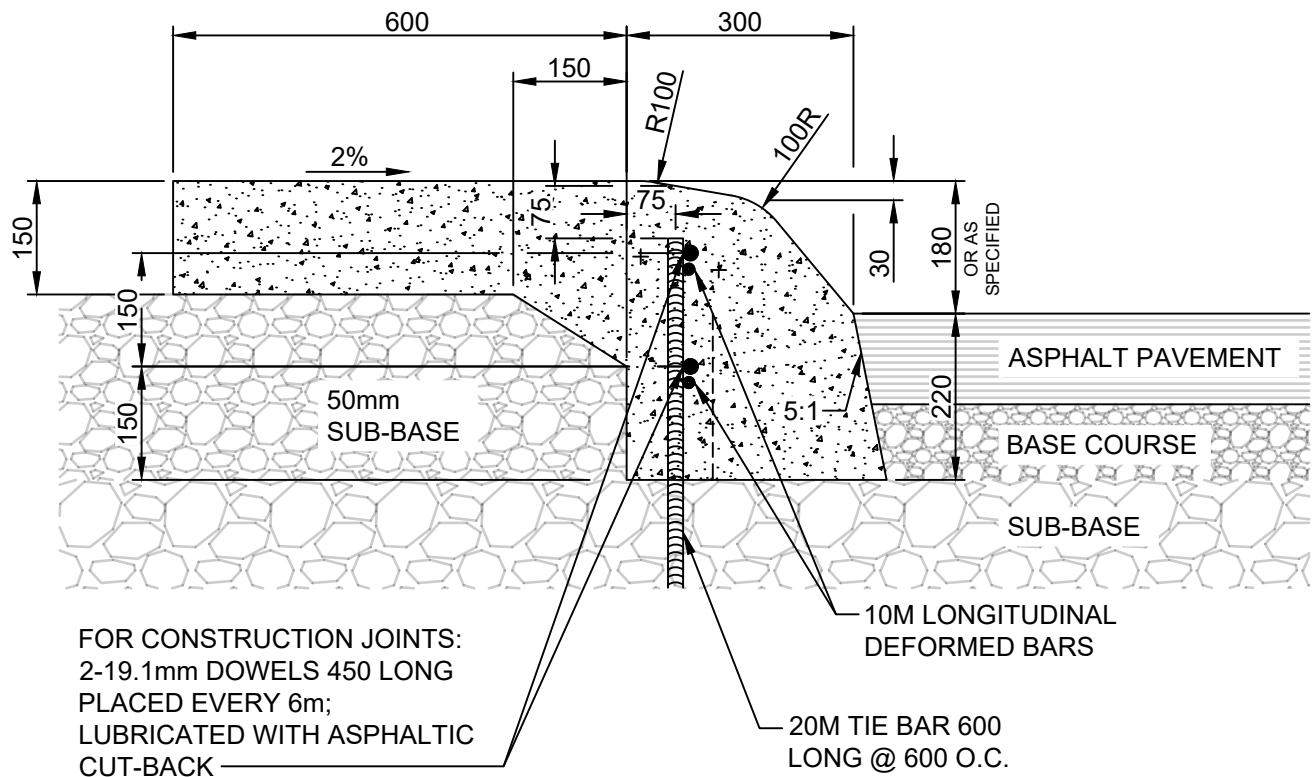
THE CITY OF WINNIPEG
PUBLIC WORKS DEPARTMENT

Reference Spec. No.
CW 3325

Revisions			
No.	Date	Description	By

**MODIFIED BARRIER CURB
FOR ASPHALT PAVEMENT**

Designed By: A.G.	Drawn By: R.B.	Scale : N.T.S
Checked By: B.K.	Date: 2024-03-19	
Approved: PAVEMENT MANAGEMENT BRANCH		Drawing No. SD-200B DRAFT



NOTES:

1. TRANSVERSE SAW CUT EVERY 3m OR AT PAVEMENT JOINTS
2. TRANSVERSE SAW CUTS ARE TO BE A MAXIMUM DEPTH OF 25mm

DIMENSIONS IN MILLIMETRES



THE CITY OF WINNIPEG
PUBLIC WORKS DEPARTMENT

Reference Spec. No.
CW 3325

Revisions

No.	Date	Description	By

**MODIFIED BARRIER CURB WITH
INTEGRAL SPLASH STRIP FOR
ASPHALT PAVEMENT**

Designed By:
A.G.

Checked By:
B.K.

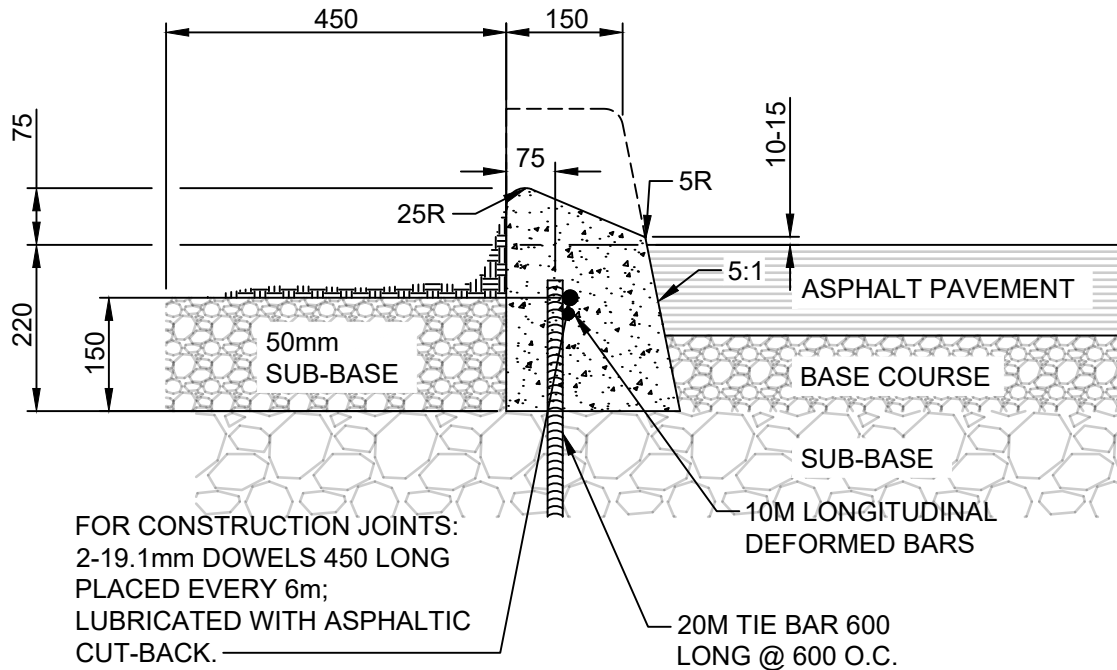
Approved:
PAVEMENT MANAGEMENT BRANCH

Drawn By:
R.B.

Date:
2024-03-19

Scale :
N.T.S

Drawing No.
**SD-200BA
DRAFT**



NOTES:

1. TRANSVERSE SAW CUT EVERY 3m OR AT PAVEMENT JOINTS
2. TRANSVERSE SAW CUTS ARE TO BE A MAXIMUM DEPTH OF 25mm

DIMENSIONS IN MILLIMETRES



THE CITY OF WINNIPEG
PUBLIC WORKS DEPARTMENT

Reference Spec. No.
CW 3325

Revisions

No.	Date	Description	By

**75 mm LIP CURB FOR
ASPHALT PAVEMENT**

Designed By:
A.G.

Drawn By:
R.B.

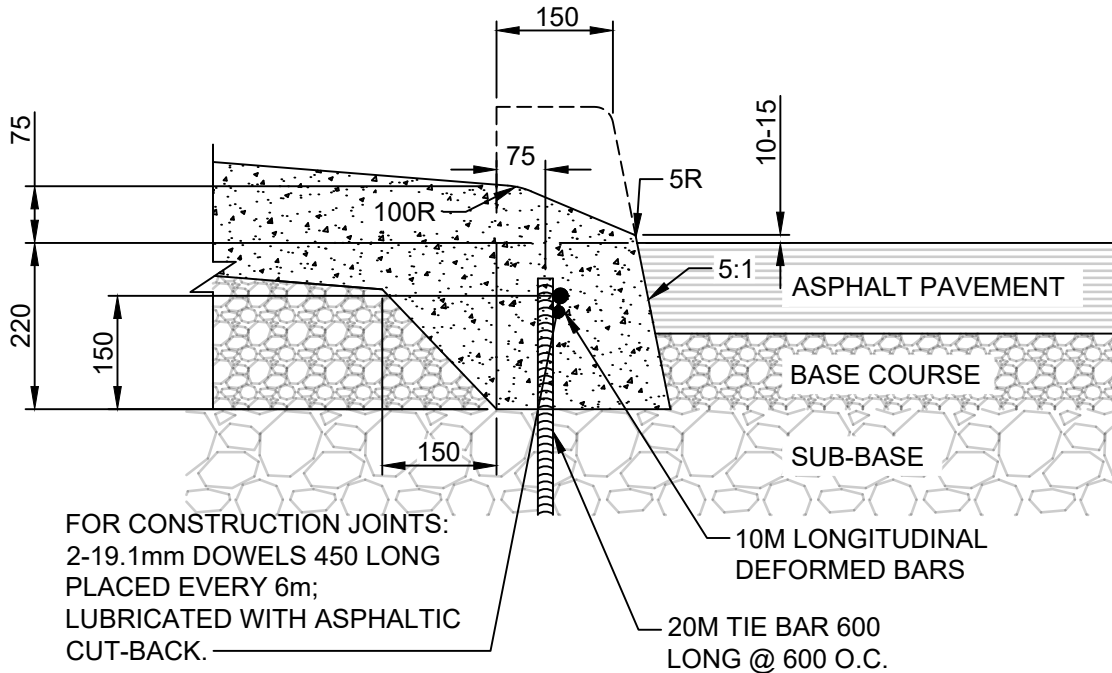
Scale :
N.T.S

Checked By:
B.K.

Date:
2024-03-19

Drawing No.
**SD-200C
DRAFT**

Approved:
PAVEMENT MANAGEMENT BRANCH



NOTES:

1. TRANSVERSE SAW CUT EVERY 3m OR AT PAVEMENT JOINTS
2. TRANSVERSE SAW CUTS ARE TO BE A MAXIMUM DEPTH OF 25mm

DIMENSIONS IN MILLIMETRES



THE CITY OF WINNIPEG
PUBLIC WORKS DEPARTMENT

Reference Spec. No.
CW 3325

Revisions

No.	Date	Description	By

**75 mm LIP CURB WITH
INTEGRAL APPROACH
FOR ASPHALT PAVEMENT**

Designed By:
A.G.

Drawn By:
R.B.

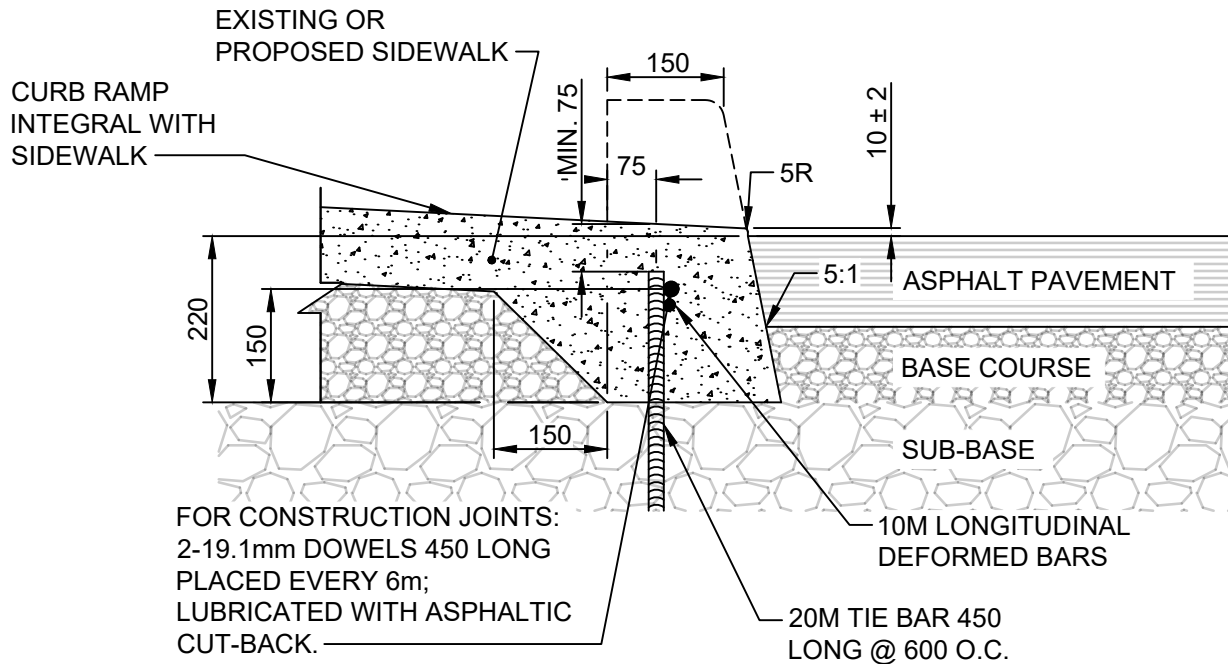
Scale :
N.T.S

Checked By:
B.K.

Date:
2024-03-19

Drawing No.
**SD-200CA
DRAFT**

Approved:
PAVEMENT MANAGEMENT BRANCH



NOTES:

1. TRANSVERSE SAW CUT EVERY 3m OR AT PAVEMENT JOINTS
2. TRANSVERSE SAW CUTS ARE TO BE A MAXIMUM DEPTH OF 25mm

DIMENSIONS IN MILLIMETRES



THE CITY OF WINNIPEG
PUBLIC WORKS DEPARTMENT

Reference Spec. No.
CW 3325

Revisions

No.	Date	Description	By

**CURB RAMP FOR
ASPHALT PAVEMENT**

Designed By:
A.G.

Drawn By:
R.B.

Scale :
N.T.S

Checked By:
B.K.

Date:
2024-03-19

Drawing No.
**SD-200D
DRAFT**

Approved:
PAVEMENT MANAGEMENT BRANCH