

CONSTRUCTION NOTES:

- ISOLATE MISCELLANEOUS ITEMS IN NEW CONCRETE WORKS AS PER SD-228C.
- ALL WORK AND MATERIALS TO BE IN ACCORDANCE WITH LATEST REVISION OF THE CITY OF WINNIPEG STANDARD CONSTRUCTION SPECIFICATIONS.
- LEGAL PLAN AND UNDERGROUND INFORMATION FROM CITY OF WINNIPEG LBIS. CONTRACTOR TO VERIFY ALL UNDERGROUNDS IN THE FIELD.
- CONTRACTOR TO TAKE PRECAUTIONARY STEPS TO AVOID DAMAGE FROM CONSTRUCTION ACTIVITIES TO TREES WITHIN THE LIMITS OF CONSTRUCTION.
- LOCATION OF EXISTING UTILITIES/SERVICES TO BE CONFIRMED IN THE FIELD BY THE CONTRACTOR.
- INSTALL CB LEADS AT MIN. 1.0% SLOPE OR AS DIRECTED BY THE CONTRACT ADMINISTRATOR.
- CONTRACTOR TO CONFIRM EXISTING LEAD INVERT ELEVATIONS PRIOR TO INSTALLATION.
- ALL DIMENSIONS ARE TO BACK OF CURB.
- LIMITS OF CURB AND SIDEWALK RECONSTRUCTION TO BE FINALIZED IN THE FIELD BY THE CONTRACT ADMINISTRATOR.
- ADJUST ALL WATER VALVES, MANHOLES, CATCH BASINS, CATCH PITS AND WATER SHUT OFF VALVES TO GRADE.
- ALL PRIVATE WALKWAYS TO BE ADJUSTED TO NEW SIDEWALK OR TOP OF CURB ELEVATION, AS REQUIRED.
- STREET LIGHT STANDARDS, HYDRO POLES AND ANCHORS THAT REQUIRE TEMPORARY SUPPORT, REMOVAL OR REPLACEMENT, ARE TO BE DONE AT THE EXPENSE OF THE CONTRACTOR, AS NECESSARY.
- FOR ROAD RECONSTRUCTIONS, INSTALL 6 m OF 150 mm SUBDRAIN TO CATCH BASINS IN BOTH DIRECTIONS PARALLEL TO ROADWAY AS PER SD-245 AND CAP ENDS.
- FOR ROAD RECONSTRUCTIONS, ALL WATER MAINS AND SERVICES NEED TO BE INSULATED, ADDITIONALLY, ALL CATCH BASINS, MANHOLES AND LEAD PIPES LOCATED WITHIN 2.0 m OF A RESIDENTIAL SERVICE MUST BE INSULATED TO PROTECT THE SERVICE FROM POTENTIAL FUTURE FREEZING.
- FOR ROAD RECONSTRUCTIONS, CURB REVEAL SHALL BE 180 mm UNLESS NOTED OTHERWISE. FOR ROAD REHABILITATIONS, CURB REVEAL SHALL BE 150 mm UNLESS NOTED OTHERWISE.

CURB LEGEND

- BARRIER CURB FOR ASPHALT PAVEMENT (SD-200A) —
- BARRIER CURB FOR CONC. PAVEMENT (SD-205) ---
- MODIFIED BARRIER CURB FOR ASPHALT PAVEMENT (SD-200B) ---
- MODIFIED BARRIER CURB FOR CONC. PAVEMENT (SD-203B) ---
- MODIFIED LIP CURB (SD-202C) ---
- CURB RAMP FOR ASPHALT PAVEMENT (SD-200D) ---

- REMOVALS / RELOCATES ○
- REMOVALS / RELOCATES (BY OTHERS) ○
- ADJUSTMENTS ○
- ADJUSTMENTS (BY OTHERS) ○

ABBREVIATIONS:

- CONC CONCRETE
- ASP ASPHALT
- TYP TYPICAL
- EX EXISTING
- MH MANHOLE
- WV WATER VALVE
- EL ELEVATION
- CB CATCH BASIN
- CP CATCH PIT
- CI CURB INLET
- CL CONTROL LINE
- SL STREET LIGHT
- TS TRAFFIC SIGNAL

SYMBOLS:

- HYDRO MANHOLE
- TELEPHONE MANHOLE
- TRAFFIC SIGNAL SPLICE PIT
- WATER VALVE
- HYDRANT
- CURB STOP
- GAS VALVE
- HYDRO POLE
- HYDRO POLE WITH LIGHT
- STREET LIGHT
- TRAFFIC SIGNAL
- SIGNAL CONTROL BOX
- BELLMIS PEDESTAL
- TREE
- IRON PROPERTY BAR
- HYDRO GUY ANCHOR

METRIC

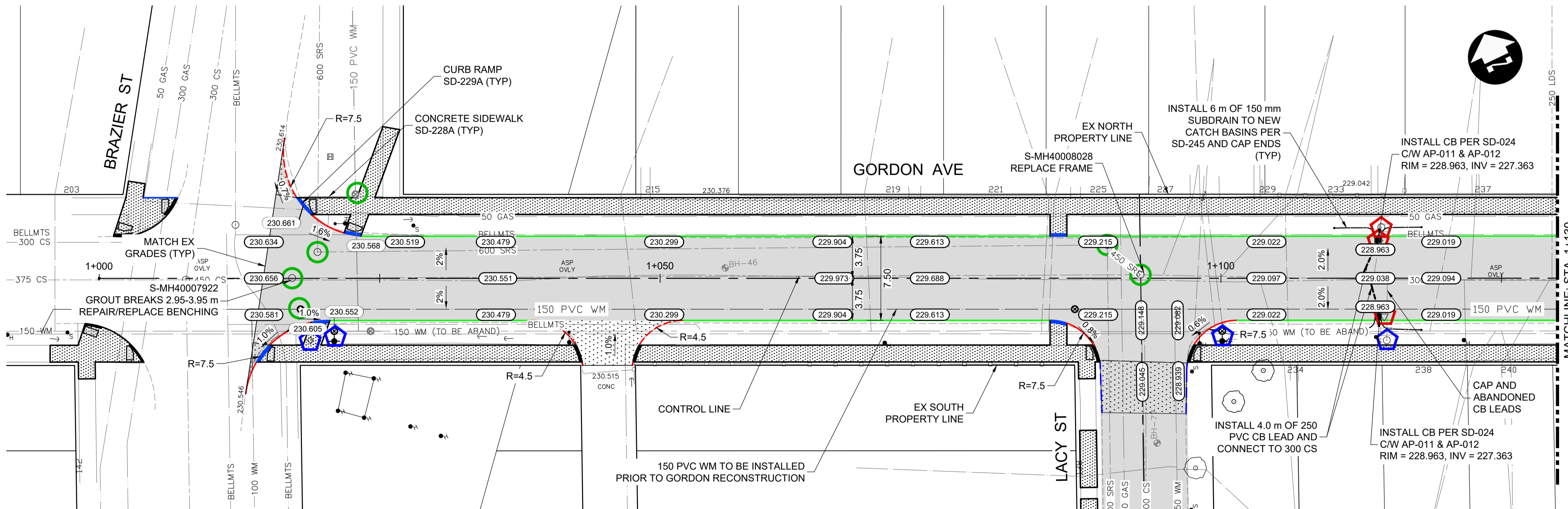
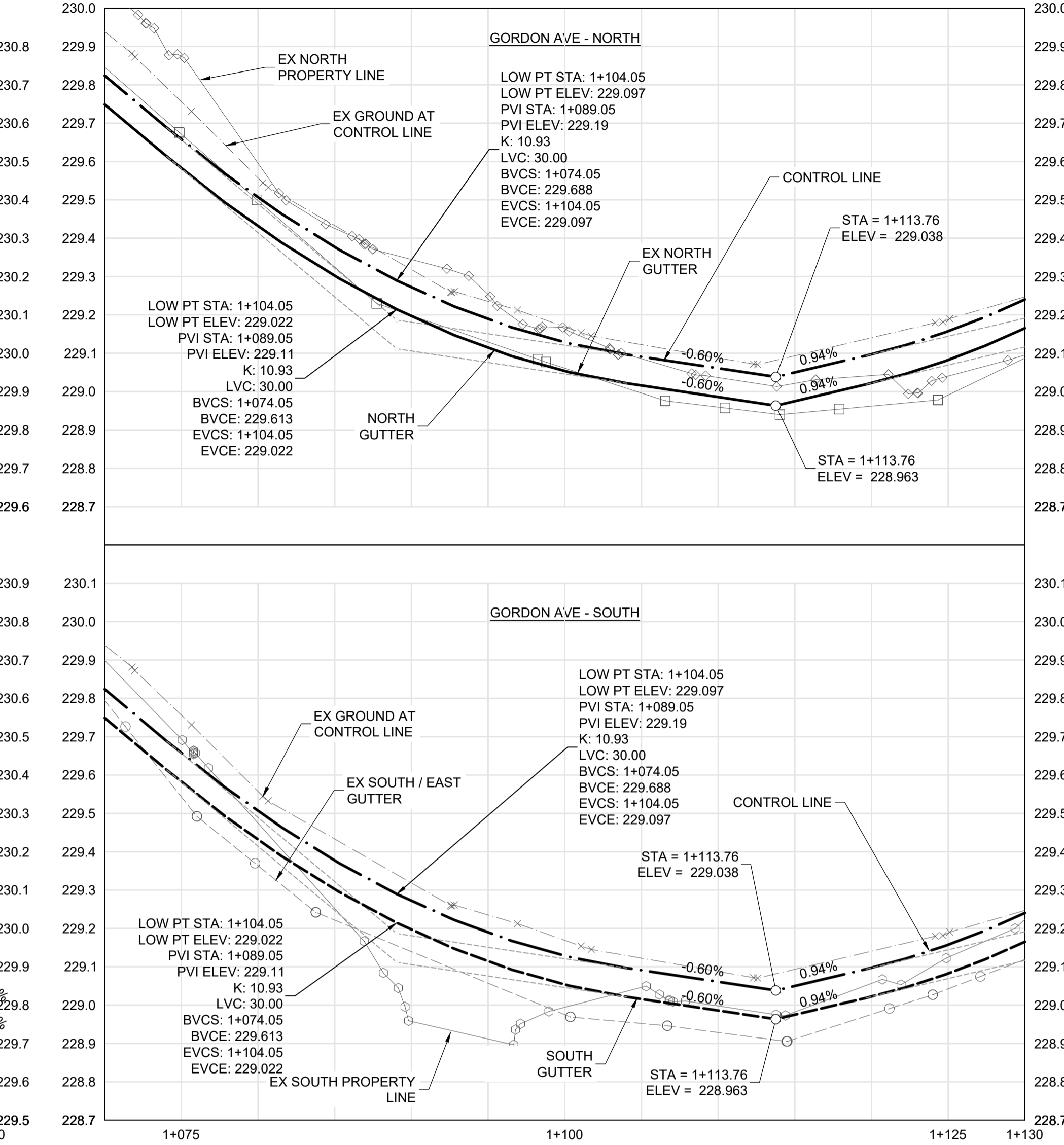
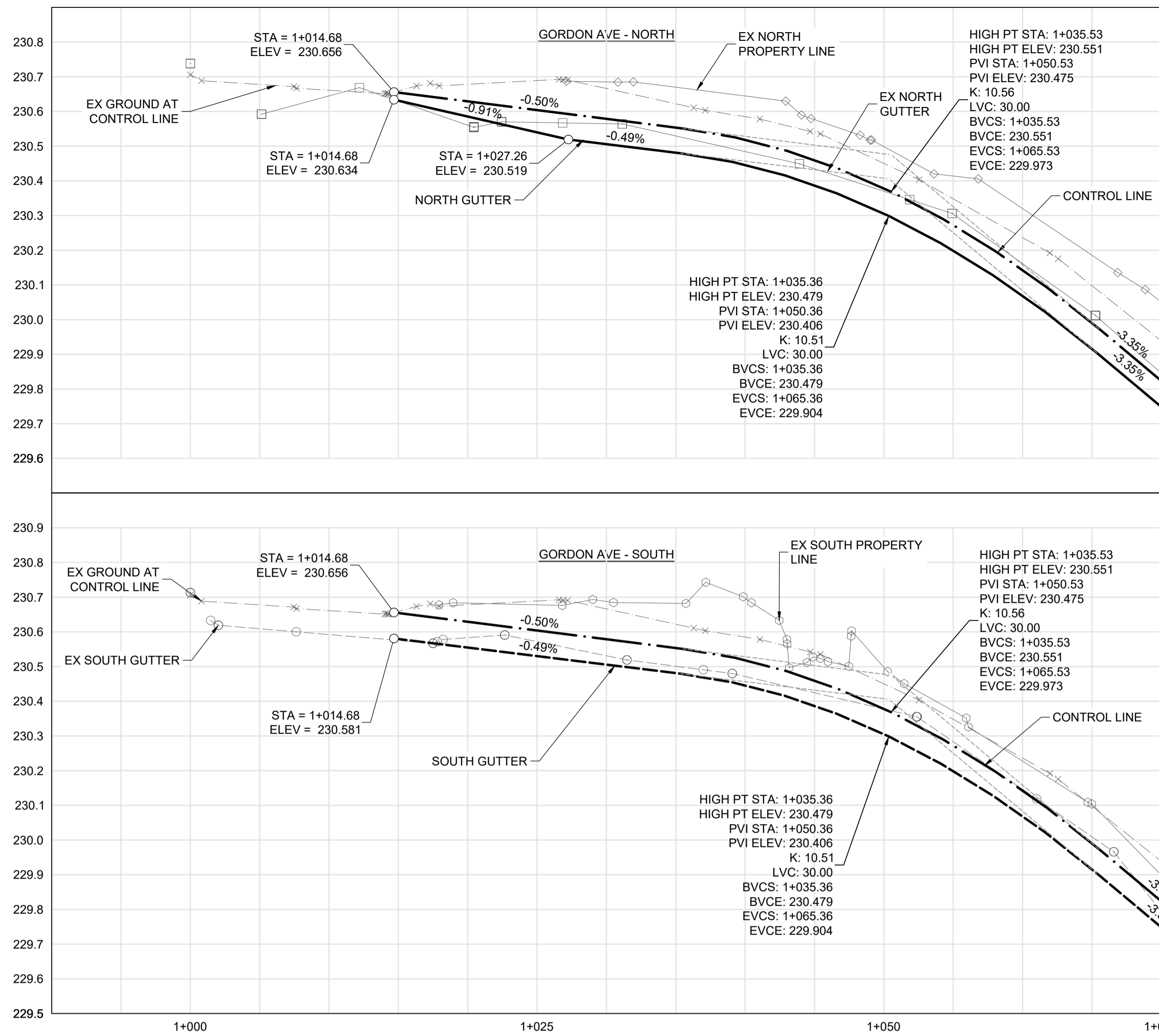
WHOLE NUMBERS INDICATE MILLIMETRES
DECIMALIZED NUMBERS INDICATE METRES

WARNING

IF POWER EQUIPMENT OR EXPLOSIVES ARE TO BE USED FOR EXCAVATION ON THIS PROJECT THE CONTRACTOR MUST:

- NOTIFY THE GAS COMPANY OF THE PROPOSED LOCATION OF EXCAVATION.
- TAKE PRECAUTION TO AVOID DAMAGE TO GAS COMPANY INSTALLATIONS SEE PROVINCIAL REGULATION 210/72 FOR DETAILS.
- OBTAIN EXCAVATION PERMITS PRIOR TO CONSTRUCTION.

**PRELIMINARY ONLY
NOT FOR CONSTRUCTION**



EXISTING	LEGEND-PLAN	PROPOSED	EXISTING	LEGEND-PLAN	PROPOSED	EXISTING	LEGEND-PROFILE	PROPOSED
150 WM	WATERMAIN	150 WM	CONCRETE ROAD	CONCRETE ROAD	CONCRETE ROAD	ASPHALT	ASPHALT	ASPHALT
300 LDS	LAND DRAINAGE SEWER	300 LDS	ASPHALT ROAD	ASPHALT ROAD	ASPHALT ROAD	NORTH/WEST GUTTER	NORTH/WEST GUTTER	NORTH/WEST GUTTER
250 WWS	WASTE WATER SEWER	250 WWS	CONC ROAD W/ASP OVERLAY	CONC ROAD W/ASP OVERLAY	CONC ROAD W/ASP OVERLAY	SOUTH/EAST GUTTER	SOUTH/EAST GUTTER	SOUTH/EAST GUTTER
HYDRO	HYDRO	HYDRO	CONCRETE SIDEWALK	CONCRETE SIDEWALK	CONCRETE SIDEWALK	NORTH/WEST MED. GUTTER	NORTH/WEST MED. GUTTER	NORTH/WEST MED. GUTTER
BELLMTS	BELLMTS	BELLMTS	ASPHALT PATH	ASPHALT PATH	ASPHALT PATH	SOUTH/EAST MED. GUTTER	SOUTH/EAST MED. GUTTER	SOUTH/EAST MED. GUTTER
100 GAS	GAS	100 GAS	REMOVALS	REMOVALS	REMOVALS	NORTH/WEST DITCH	NORTH/WEST DITCH	NORTH/WEST DITCH
T.S.	TRAFFIC SIGNALS	T.S.	PAVEMENT REPAIR FABRIC	PAVEMENT REPAIR FABRIC	PAVEMENT REPAIR FABRIC	SOUTH/EAST DITCH	SOUTH/EAST DITCH	SOUTH/EAST DITCH
S.L.	STREET LIGHTS	S.L.	ELEVATION	ELEVATION	ELEVATION	NORTH/WEST SIDEWALK	NORTH/WEST SIDEWALK	NORTH/WEST SIDEWALK
○	MANHOLE	○	PROPERTY LINE	PROPERTY LINE	PROPERTY LINE	SOUTH/EAST SIDEWALK	SOUTH/EAST SIDEWALK	SOUTH/EAST SIDEWALK
□	CATCH BASIN	□	CURB RAMP	CURB RAMP	CURB RAMP			
▽	CATCH PIT	▽	DETECTABLE TILE	DETECTABLE TILE	DETECTABLE TILE			

UNDERGROUND STRUCTURES		B.M. ELEV.
SUPPLY U/G STRUCTURES	DATE	
1	ISSUED FOR TENDER	24-06-13
NO.	REVISIONS	DATE

DESIGNED BY	PMW
DRAWN BY	DC/LK
CHECKED BY	AJF
APPROVED BY	DBW
HOR. SCALE	1:250
VERTICAL	1:10
DATE	

ENGINEER'S SEAL
 2024-06-13
 D.B. WIEBE
 Member 22480
 REGISTERED PROFESSIONAL ENGINEER

THE CITY OF WINNIPEG
 PUBLIC WORKS DEPARTMENT

2024 LOCAL STREETS RENEWALS 24-R-02
 CONTRACT 1 (180-2024)

GORDON AVE - STADACONA ST-BRAZIER ST
 PLAN-PROFILE (START TO STA. 1+130)

CITY DRAWING NUMBER
 SHEET 02 OF 22
 CONSULTANT DRAWING NUMBER

C:\w_working_directory\projects_2023\dillon_40pmw\dms5376\237231-GOR-CT-COM-PP.dwg