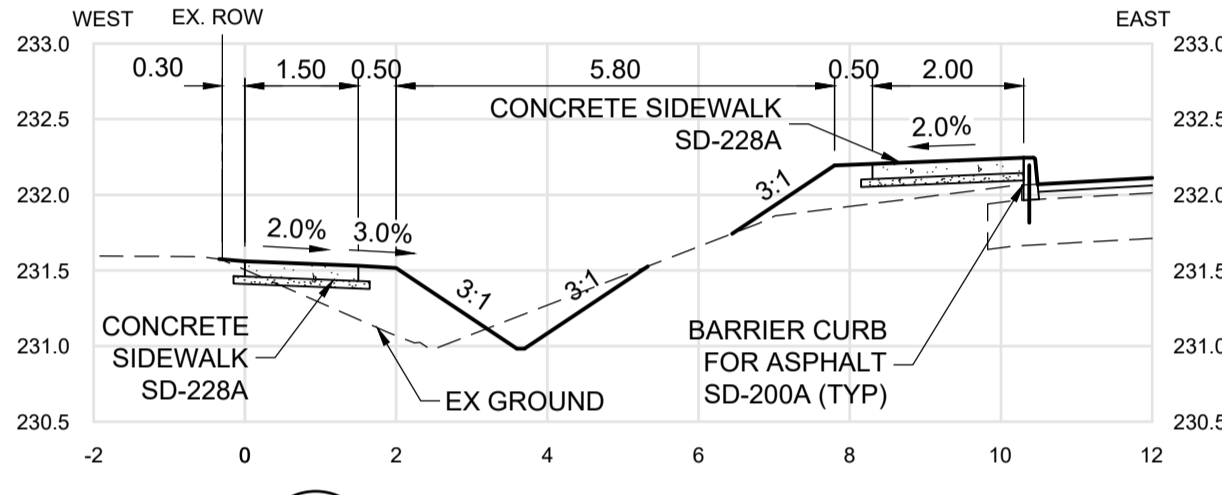
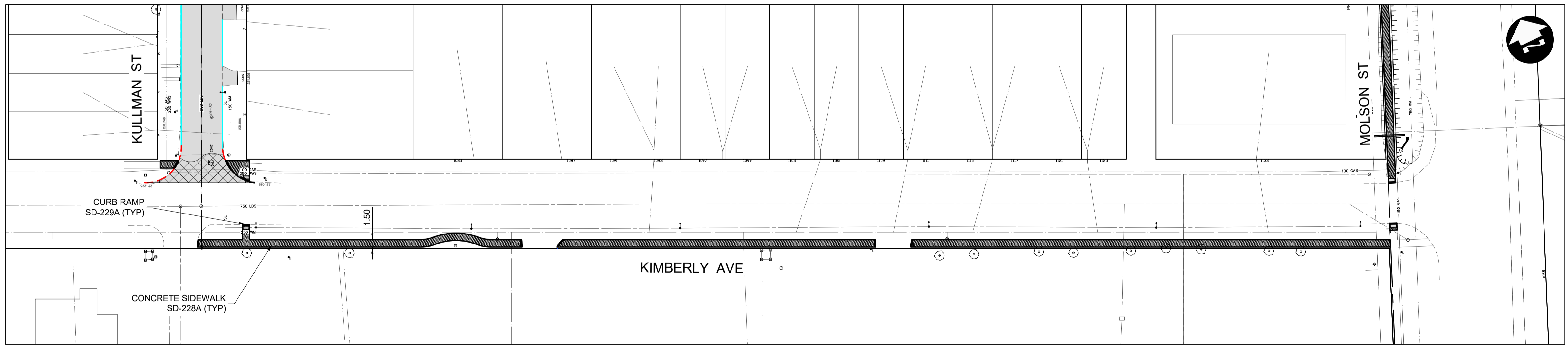
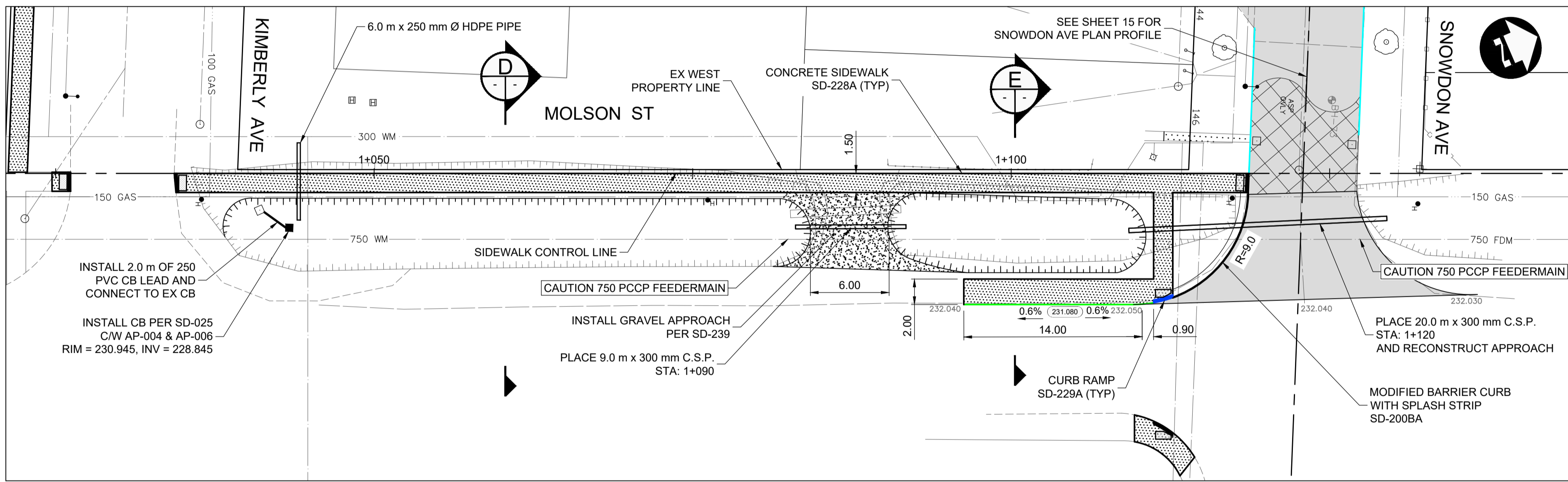
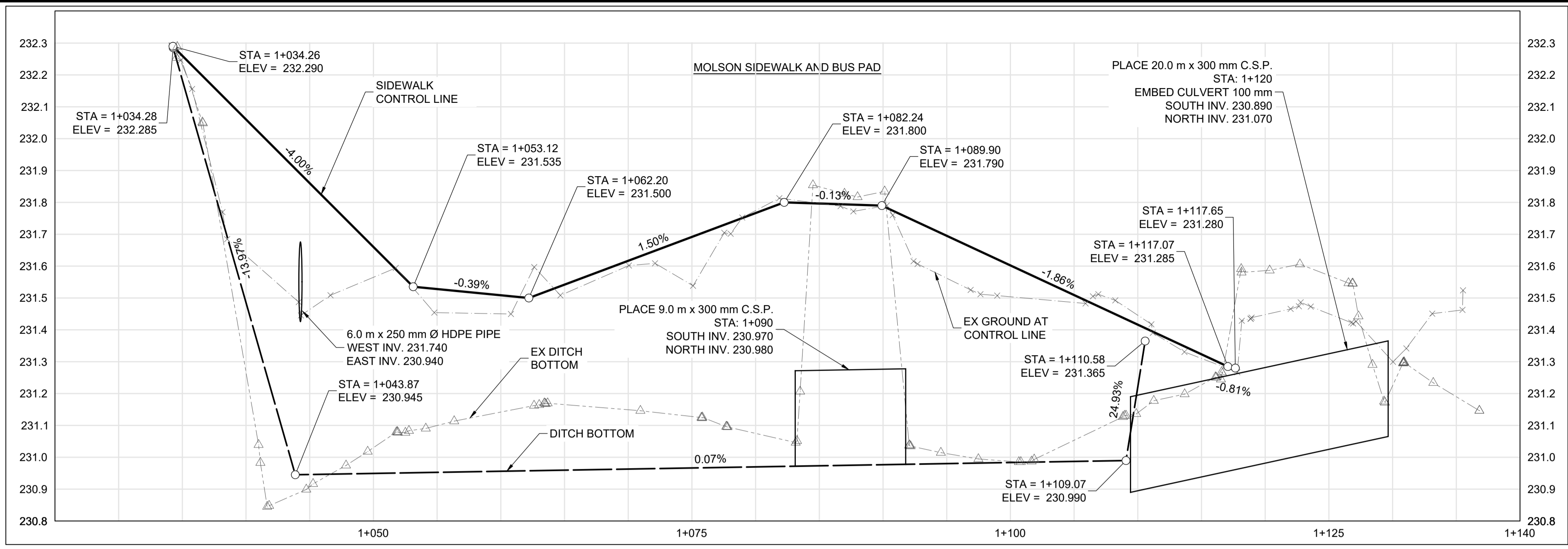


D SECTION - MOLSON STA: 1+060
SCALE: H=1:100, V=1:50



E SECTION - MOLSON STA: 1+100
SCALE: H=1:100, V=1:50



KIMBERLY AVE SIDEWALK - KULLMAN ST - MOLSON ST
1:500

- CONSTRUCTION NOTES:**
- ISOLATE MISCELLANEOUS ITEMS IN NEW CONCRETE WORKS AS PER SD-228C.
 - ALL WORK AND MATERIALS TO BE IN ACCORDANCE WITH LATEST REVISION OF THE CITY OF WINNIPEG STANDARD CONSTRUCTION SPECIFICATIONS.
 - LEGAL PLAN AND UNDERGROUND INFORMATION FROM CITY OF WINNIPEG LBIS. CONTRACTOR TO VERIFY ALL UNDERGROUNDS IN THE FIELD.
 - CONTRACTOR TO TAKE PRECAUTIONARY STEPS TO AVOID DAMAGE FROM CONSTRUCTION ACTIVITIES TO TREES WITHIN THE LIMITS OF CONSTRUCTION.
 - LOCATION OF EXISTING UTILITIES/SERVICES TO BE CONFIRMED IN THE FIELD BY THE CONTRACTOR.
 - INSTALL CB LEADS AT MIN. 1.0% SLOPE OR AS DIRECTED BY THE CONTRACT ADMINISTRATOR.
 - CONTRACTOR TO CONFIRM EXISTING LEAD INVERT ELEVATIONS PRIOR TO INSTALLATION.
 - ALL DIMENSIONS ARE TO BACK OF CURB.
 - LIMITS OF CURB AND SIDEWALK RECONSTRUCTION TO BE FINALIZED IN THE FIELD BY THE CONTRACT ADMINISTRATOR.
 - ADJUST ALL WATER VALVES, MANHOLES, CATCH BASINS, CATCH PITS AND WATER SHUT OFF VALVES TO GRADE.
 - ALL PRIVATE WALKWAYS TO BE ADJUSTED TO NEW SIDEWALK OR TOP OF CURB ELEVATION, AS REQUIRED.
 - STREET LIGHT STANDARDS, HYDRO POLES AND ANCHORS THAT REQUIRE TEMPORARY SUPPORT, REMOVAL OR REPLACEMENT, ARE TO BE DONE AT THE EXPENSE OF THE CONTRACTOR, AS NECESSARY.
 - FOR ROAD RECONSTRUCTIONS, INSTALL 6 m OF 150 mm SUBDRAIN TO CATCH BASINS IN BOTH DIRECTIONS PARALLEL TO ROADWAY AS PER SD-245 AND CAP ENDS.
 - FOR ROAD RECONSTRUCTIONS, ALL WATER MAINS AND SERVICES NEED TO BE INSULATED. ADDITIONALLY, ALL CATCH BASINS, MANHOLES AND LEAD PIPES LOCATED WITHIN 2.0 m OF A RESIDENTIAL SERVICE MUST BE INSULATED TO PROTECT THE SERVICE FROM POTENTIAL FUTURE FREEZING.
 - FOR ROAD RECONSTRUCTIONS, CURB REVEAL SHALL BE 180 mm UNLESS NOTED OTHERWISE. FOR ROAD REHABILITATIONS, CURB REVEAL SHALL BE 150 mm UNLESS NOTED OTHERWISE.

- CURB LEGEND**
- BARRIER CURB FOR ASPHALT PAVEMENT (SD-200A)
 - BARRIER CURB FOR CONC. PAVEMENT (SD-205)
 - MODIFIED BARRIER CURB FOR ASPHALT PAVEMENT (SD-200B)
 - MODIFIED BARRIER CURB FOR CONC. PAVEMENT (SD-203B)
 - MODIFIED LIP CURB (SD-202C)
 - CURB RAMP FOR ASPHALT PAVEMENT (SD-200D)

- REMOVALS / RELOCATES**
- REMOVALS / RELOCATES (BY OTHERS)
 - ADJUSTMENTS
 - ADJUSTMENTS (BY OTHERS)

- ABBREVIATIONS:**
- CONC CONCRETE
 - ASP ASPHALT
 - TYP TYPICAL
 - EX EXISTING
 - MH MANHOLE
 - WV WATER VALVE
 - EL ELEVATION
 - CB CATCH BASIN
 - CP CATCH PIT
 - CI CURB INLET
 - CL CONTROL LINE
 - SL STREET LIGHT
 - TS TRAFFIC SIGNAL
- SYMBOLS:**
- HYDRO MANHOLE
 - TELEPHONE MANHOLE
 - TRAFFIC SIGNAL SPLICE PIT
 - WATER VALVE
 - HYDRANT
 - CURB STOP
 - GAS VALVE
 - HYDRO POLE
 - HYDRO POLE WITH LIGHT
 - STREET LIGHT
 - TRAFFIC SIGNAL
 - SIGNAL CONTROL BOX
 - BELLMTS PEDESTAL
 - TREE
 - IRON PROPERTY BAR
 - HYDRO GUY ANCHOR

- METRIC**
- WHOLE NUMBERS INDICATE MILLIMETRES
DECIMALIZED NUMBERS INDICATE METRES
- WARNING**
- IF POWER EQUIPMENT OR EXPLOSIVES ARE TO BE USED FOR EXCAVATION ON THIS PROJECT THE CONTRACTOR MUST:
- NOTIFY THE GAS COMPANY OF THE PROPOSED LOCATION OF EXCAVATION.
 - TAKE PRECAUTION TO AVOID DAMAGE TO GAS COMPANY INSTALLATIONS SEE PROVINCIAL REGULATION 210/72 FOR DETAILS.
 - OBTAIN EXCAVATION PERMITS PRIOR TO CONSTRUCTION.

PRELIMINARY ONLY
NOT FOR CONSTRUCTION

150 WM	WATERMAIN	150 WM	CONCRETE ROAD	C PROFILE	
300 LDS	LAND DRAINAGE SEWER	300 LDS	ASPHALT ROAD	NORTH/WEST GUTTER	
250 WWS	WASTE WATER SEWER	250 WWS	CONC ROAD W/ASP OVERLAY	SOUTH/EAST GUTTER	
HYDRO	HYDRO	BELLMTS	CONCRETE SIDEWALK	NORTH/WEST MED. GUTTER	
BELLMTS	BELLMTS	100 GAS	ASPHALT PATH	SOUTH/EAST MED. GUTTER	
100 GAS	GAS	T.S.	REMOVALS	NORTH/WEST DITCH	
T.S.	TRAFFIC SIGNALS	S.L.	PAVEMENT REPAIR FABRIC	SOUTH/EAST DITCH	
S.L.	STREET LIGHTS		ELEVATION	NORTH/WEST SIDEWALK	
	MANHOLE		PROPERTY LINE	SOUTH/EAST SIDEWALK	
	CATCH BASIN		CURB RAMP		
	CATCH PIT		DETECTABLE TILE		
EXISTING	LEGEND-PLAN	PROPOSED	EXISTING	LEGEND-PROFILE	PROPOSED

UNDERGROUND STRUCTURES

SUPPLY, U/G STRUCTURES DATE

LOCATION OF UNDERGROUND STRUCTURES AS SHOWN ARE BASED ON THE BEST INFORMATION AVAILABLE BUT NO GUARANTEE IS GIVEN THAT ALL EXISTING UTILITIES ARE SHOWN OR THAT THE GIVEN LOCATIONS ARE EXACT. CONFIRMATION OF EXISTENCE AND EXACT LOCATION OF ALL SERVICES MUST BE OBTAINED FROM THE INDIVIDUAL UTILITIES BEFORE PROCEEDING WITH CONSTRUCTION.

B.M. ELEV.				
DESIGNED BY	PMW			
DRAWN BY	DRC/LK			
CHECKED BY	AJF			
APPROVED BY	DBW			
HOR. SCALE	1:250			
VERTICAL	1:10			
1	ISSUED FOR TENDER	24-06-13	DBW	
NO.	REVISIONS	DATE	BY	DATE

DESIGNED BY: PMW
DRAWN BY: DRC/LK
CHECKED BY: AJF
APPROVED BY: DBW
HOR. SCALE: 1:250
VERTICAL: 1:10

DILLON CONSULTING

RELEASED FOR CONSTRUCTION

ENGINEER'S SEAL

PROVINCE OF MANITOBA
D.B. WIEBE
Member 22480
REGISTERED PROFESSIONAL ENGINEER

CONSULTANT PROJECT NUMBER: 23-7321

THE CITY OF WINNIPEG
PUBLIC WORKS DEPARTMENT

2024 LOCAL STREETS RENEWALS 24-R-02
CONTRACT 1 (180-2024)

CITY DRAWING NUMBER: SHEET 19 OF 22
CONSULTANT DRAWING NUMBER

KIMBERLY AVE SIDEWALK - KULLMAN ST-MOLSON ST
MOLSON ST SIDEWALK AND BUS STOP

C:\pwworking\projects\2023\dillon_40pmw\dms5376\237231-KIM-CT-CON-PP.dwg