

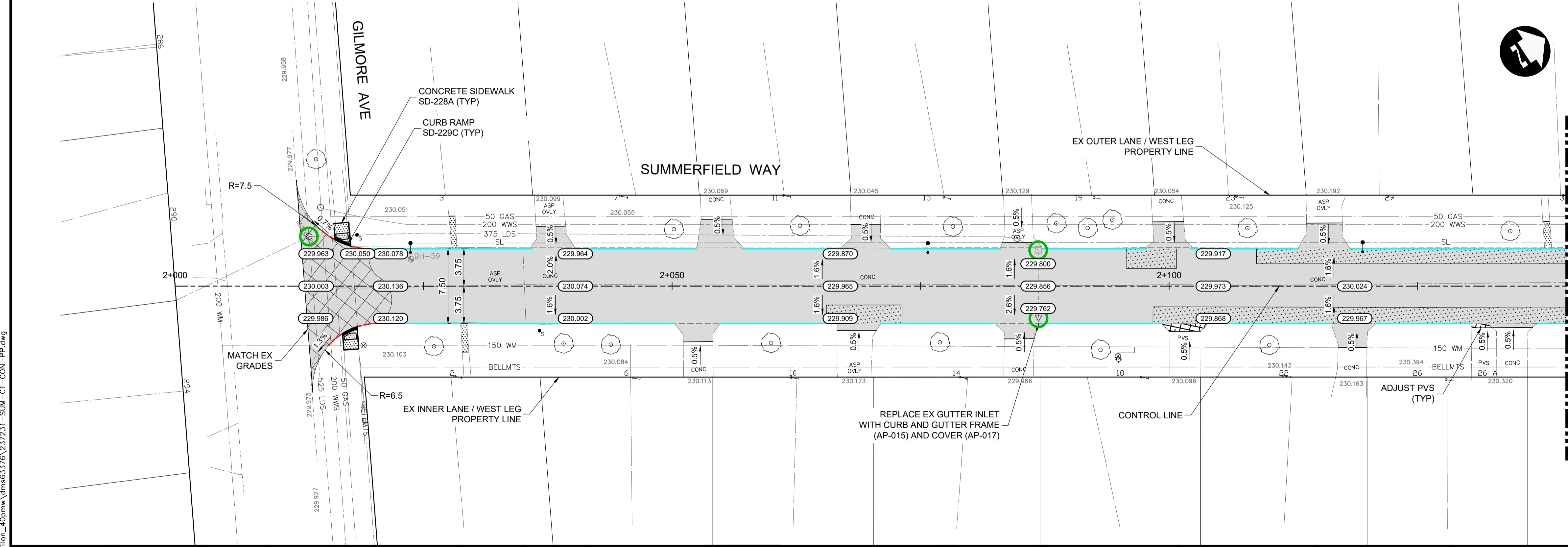
- CONSTRUCTION NOTES:**
- ISOLATE MISCELLANEOUS ITEMS IN NEW CONCRETE WORKS AS PER SD-228C.
  - ALL WORK AND MATERIALS TO BE IN ACCORDANCE WITH LATEST REVISION OF THE CITY OF WINNIPEG STANDARD CONSTRUCTION SPECIFICATIONS.
  - LEGAL PLAN AND UNDERGROUND INFORMATION FROM CITY OF WINNIPEG LBIS. CONTRACTOR TO VERIFY ALL UNDERGROUNDS IN THE FIELD.
  - CONTRACTOR TO TAKE PRECAUTIONARY STEPS TO AVOID DAMAGE FROM CONSTRUCTION ACTIVITIES TO TREES WITHIN THE LIMITS OF CONSTRUCTION.
  - LOCATION OF EXISTING UTILITIES/SERVICES TO BE CONFIRMED IN THE FIELD BY THE CONTRACTOR.
  - INSTALL CB LEADS AT MIN. 1.0% SLOPE OR AS DIRECTED BY THE CONTRACT ADMINISTRATOR.
  - CONTRACTOR TO CONFIRM EXISTING LEAD INVERT ELEVATIONS PRIOR TO INSTALLATION.
  - ALL DIMENSIONS ARE TO BACK OF CURB.
  - LIMITS OF CURB AND SIDEWALK RECONSTRUCTION TO BE FINALIZED IN THE FIELD BY THE CONTRACT ADMINISTRATOR.
  - ADJUST ALL WATER VALVES, MANHOLES, CATCH BASINS, CATCH PITS AND WATER SHUT OFF VALVES TO GRADE.
  - ALL PRIVATE WALKWAYS TO BE ADJUSTED TO NEW SIDEWALK OR TOP OF CURB ELEVATION, AS REQUIRED.
  - STREET LIGHT STANDARDS, HYDRO POLES AND ANCHORS THAT REQUIRE TEMPORARY SUPPORT, REMOVAL OR REPLACEMENT, ARE TO BE DONE AT THE EXPENSE OF THE CONTRACTOR, AS NECESSARY.
  - FOR ROAD RECONSTRUCTIONS, INSTALL 6 m OF 150 mm SUBDRAIN TO CATCH BASINS IN BOTH DIRECTIONS PARALLEL TO ROADWAY AS PER SD-245 AND CAP ENDS.
  - FOR ROAD RECONSTRUCTIONS, ALL WATER MAINS AND SERVICES NEED TO BE INSULATED, ADDITIONALLY, ALL CATCH BASINS, MANHOLES AND LEAD PIPES LOCATED WITHIN 2.0 m OF A RESIDENTIAL SERVICE MUST BE INSULATED TO PROTECT THE SERVICE FROM POTENTIAL FUTURE FREEZING.
  - FOR ROAD RECONSTRUCTIONS, CURB REVEAL SHALL BE 180 mm UNLESS NOTED OTHERWISE. FOR ROAD REHABILITATIONS, CURB REVEAL SHALL BE 150 mm UNLESS NOTED OTHERWISE.

- CURB LEGEND**
- BARRIER CURB FOR ASPHALT PAVEMENT (SD-200A)
  - BARRIER CURB FOR CONC. PAVEMENT (SD-205)
  - MODIFIED BARRIER CURB FOR ASPHALT PAVEMENT (SD-200B)
  - MODIFIED BARRIER CURB FOR CON. PAVEMENT (SD-203B)
  - MODIFIED LIP CURB (SD-202C)
  - CURB RAMP FOR ASPHALT PAVEMENT (SD-200D)
- REMOVALS / RELOCATES**
- REMOVALS / RELOCATES (BY OTHERS)
- ADJUSTMENTS**
- ADJUSTMENTS (BY OTHERS)

- ABBREVIATIONS:**
- CONC CONCRETE
  - ASP ASPHALT
  - TYP TYPICAL
  - EX EXISTING
  - MH MANHOLE
  - WV WATER VALVE
  - EL ELEVATION
  - CB CATCH BASIN
  - CP CATCH PIT
  - CI CURB INLET
  - CL CONTROL LINE
  - SL STREET LIGHT
  - TS TRAFFIC SIGNAL
- SYMBOLS:**
- HYDRO MANHOLE
  - TELEPHONE MANHOLE
  - TRAFFIC SIGNAL SPLICE PIT
  - WATER VALVE
  - HYDRANT
  - CURB STOP
  - GAS VALVE
  - HYDRO POLE
  - HYDRO POLE WITH LIGHT
  - STREET LIGHT
  - TRAFFIC SIGNAL
  - SIGNAL CONTROL BOX
  - BELLMIS PEDESTAL
  - TREE
  - IRON PROPERTY BAR
  - HYDRO GUY ANCHOR

- METRIC**
- WHOLE NUMBERS INDICATE MILLIMETRES  
DECIMALIZED NUMBERS INDICATE METRES
- WARNING**
- IF POWER EQUIPMENT OR EXPLOSIVES ARE TO BE USED FOR EXCAVATION ON THIS PROJECT THE CONTRACTOR MUST:
- NOTIFY THE GAS COMPANY OF THE PROPOSED LOCATION OF EXCAVATION.
  - TAKE PRECAUTION TO AVOID DAMAGE TO GAS COMPANY INSTALLATIONS SEE PROVINCIAL REGULATION 210/72 FOR DETAILS.
  - OBTAIN EXCAVATION PERMITS PRIOR TO CONSTRUCTION.

**PRELIMINARY ONLY  
NOT FOR CONSTRUCTION**



EXISTING	LEGEND-PLAN	PROPOSED	EXISTING	LEGEND-PLAN	PROPOSED	EXISTING	LEGEND-PROFILE	PROPOSED
150 WM	WATERMAIN	150 WM	CONCRETE ROAD	CONCRETE ROAD	CONCRETE ROAD	---	NORTH/WEST GUTTER	---
300 LDS	LAND DRAINAGE SEWER	300 LDS	ASPHALT ROAD	ASPHALT ROAD	ASPHALT ROAD	---	SOUTH/EAST GUTTER	---
250 WWS	WASTE WATER SEWER	250 WWS	CONC ROAD W/ASP OVERLAY	CONC ROAD W/ASP OVERLAY	CONC ROAD W/ASP OVERLAY	---	NORTH/WEST MED. GUTTER	---
HYDRO	HYDRO	HYDRO	CONCRETE SIDEWALK	CONCRETE SIDEWALK	CONCRETE SIDEWALK	---	SOUTH/EAST MED. GUTTER	---
BELLMTS	BELLMTS	BELLMTS	ASPHALT PATH	ASPHALT PATH	ASPHALT PATH	---	NORTH/WEST DITCH	---
100 GAS	GAS	100 GAS	REMOVALS	REMOVALS	REMOVALS	---	SOUTH/EAST DITCH	---
T.S.	TRAFFIC SIGNALS	T.S.	PAVEMENT REPAIR FABRIC	PAVEMENT REPAIR FABRIC	PAVEMENT REPAIR FABRIC	---	NORTH/WEST SIDEWALK	---
S.L.	STREET LIGHTS	S.L.	ELEVATION	ELEVATION	ELEVATION	---	SOUTH/EAST SIDEWALK	---
○	MANHOLE	●	PROPERTY LINE	PROPERTY LINE	PROPERTY LINE	---		
□	CATCH BASIN	■	CURB RAMP	CURB RAMP	CURB RAMP	---		
▽	CATCH PIT	▼	DETECTABLE TILE	DETECTABLE TILE	DETECTABLE TILE	---		

**UNDERGROUND STRUCTURES**

SUPPLY, U/G STRUCTURES DATE

LOCATION OF UNDERGROUND STRUCTURES AS SHOWN ARE BASED ON THE BEST INFORMATION AVAILABLE BUT NO GUARANTEE IS GIVEN THAT ALL EXISTING UTILITIES ARE SHOWN OR THAT THE GIVEN LOCATIONS ARE EXACT. CONFIRMATION OF EXISTENCE AND EXACT LOCATION OF ALL SERVICES MUST BE OBTAINED FROM THE INDIVIDUAL UTILITIES BEFORE PROCEEDING WITH CONSTRUCTION.

**B.M. ELEV.**

NO.	REVISIONS	DATE	BY
0	ISSUED FOR TENDER	24-06-13	DBW

**DESIGNED BY** PMW

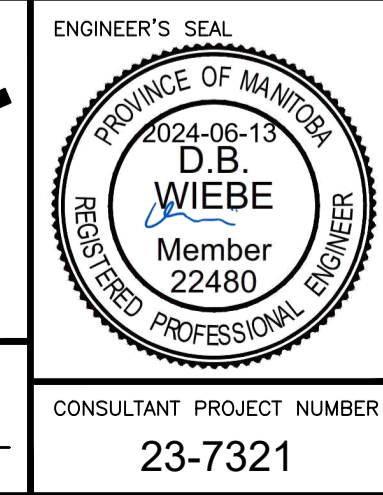
**DRAWN BY** LK

**CHECKED BY** AJF

**APPROVED BY** DBW

**HOR. SCALE** 1:250

**VERTICAL** 1:10



**THE CITY OF WINNIPEG**  
PUBLIC WORKS DEPARTMENT

**2024 LOCAL STREETS RENEWALS 24-R-02**  
CONTRACT 2 (181-2024)

**SUMMERFIELD WAY - GILMORE AVE-GILMORE AVE**  
PLAN-PROFILE (START TO STA. 2+140)

CITY DRAWING NUMBER: SHEET 08 OF 18  
CONSULTANT DRAWING NUMBER

CONSULTANT PROJECT NUMBER: 23-7321

RELEASED FOR CONSTRUCTION DATE

C:\pwworking\directory\projects\2023\dillon\_40pmw\dms6376\237231-SUM-CT-CON-PP.dwg